



# Z-LINK TECHNICAL SERVICES CONTRACTING CO. LLC

## CONTACT US:



+971 4 386 1940



+971 55 949 5833



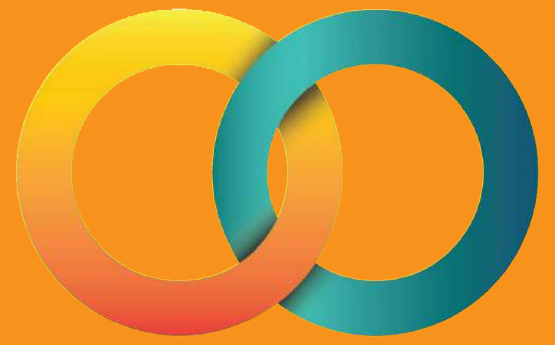
info@zlink.ae



No 201, Bay Sqaure, Business Bay  
Dubai, UAE



www.zlink.ae



# Z-LINK

## **ABOUT** **Z-LINK**

Z-LINK" is a leading provider of technical services in the UAE. With a steadfast commitment to quality and innovation, we specialize in the accomplishment of internal and external steel structure, protective coating, bridge coating, and a wide range of external and internal painting services, including decorative, texture painting, and epoxy floor coating



# COMPANY STRATEGY

- ✓ Purpose: To be a leader in the construction industry by providing enhanced services relationship and profitability
- ✓ Vision: To provide quality services that exceed the expectations of our esteemed customers
- ✓ Mission statement: To build long term relationships with our customers and clients and provide exceptional customer services by pursuing business through innovation and advanced technology
- ✓ Core values: We believe in treating our customers with respect and faith we grow through creativity, invention and innovation, we integrate honesty, integrity and business ethics into all aspects of our business functioning
- ✓ Goals: Regional expansion in the field of construction management and develop a strong base of key customers Increase the assets and investments of the company to support the development of services. To build good reputation in the field of technical construction work and become a key player in the industry

# HEALTH, SAFETY ENVIRONMENT POLICY

- ✓ We are committed to provide a safe, injury free workplace by integrating safety into our daily business decisions and process
- ✓ We are committed to provide a safe, injury free workplace by integrating safety into our daily business decisions and process
- ✓ Provide and maintain safe plant and equipment
- ✓ To ensure safe handling and use of substances
- ✓ To provide adequate training, information, instruction and supervision for employees
- ✓ Increase the use of environmentally acceptable materials, equipment s and technology in place of those are considered harmful
- ✓ To prevent accidents and cases of work-related ill health
- ✓ To maintain safe and healthy working conditions and
- ✓ Institute general risk assessment procedures in order to identify all relevant hazards and priorities them for remedial action
- ✓ Comply with all applicable laws, regulations, and standards; and where adequate laws do not exist to review and revise this policy as necessary
- ✓ Apply standards that minimize any adverse environmental impacts resulting from its operations



# OUR SERVICES



## Painting

Supply & Apply of Interior & Exterior Wall Painting, Bridge Coating and Decorative Paint:-Highly attractive and Durable, Heritage look, Highly washable, Excellent UV Protection with long color retention .warranty we use world's facilisis



## Fire protection coating

Supply & Apply of Interior & Exterior Wall Painting, Bridge Coating and Decorative Paint:-Highly attractive and Durable, Heritage look, Highly washable, Excellent UV Protection with long color retention .warranty we use world's facilisis



## False Ceiling

We specialize in false ceiling installation by creating innovative and unique designs that perfectly match the indoor setting. We offer to clients an attractive range of Fiber Ceiling, Metal False Ceilings&Aluminium False Ceiling



## Epoxy Floor Coating

We specialize in floor coating services using conductive water-based & non-slip floor coatings. Floor patching & resurfacing using concrete floor sealers & floor surface treatment systems for anti-slip, epoxy, factory & .non-slip flooring



## Fabrication Work

At Z Link steel fabrication, we offer a range of fabrication work to prepare your valuable assets for the long run. We understand that materials technology can change, and that application equipment is becoming more sophisticated



## Water Proofing Work

At Z Link We Provide Wide Range Of Water Proofing Solution To Various Construction Sites Such As Commercial, Industrial And Residential Etc. We Use Latest Machineries With Expert Work Force That Meet International Standards



## ABOUT OUR SPECIAL SERVICES



### Interior & Exterior Wall Painting



Supply & Apply of Interior & Exterior Wall Painting, Bridge Coating and Decorative Paint:-Highly attractive and Durable, Heritage look, Highly washable, Excellent UV Protection with long color retention warranty we use world's most know product from "Jotun" , "National" .

# ABOUT OUR SPECIAL SERVICES

## Fire protection coating:



Fire Resistance Coating on Steel and Surface, Bridge Anti Carbonation Coating, Anti-Corrosion coating.



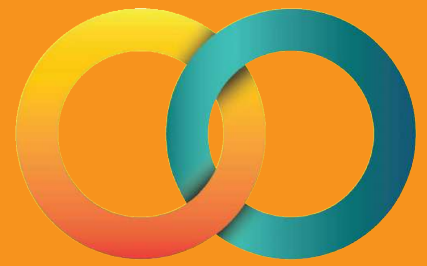
## ABOUT OUR SPECIAL SERVICES



### False Ceiling Services



We specialize in false ceiling installation by creating innovative and unique designs that perfectly match the indoor setting. We offer to clients an attractive range of Fiber Ceiling, Metal False Ceilings & Aluminium False Ceiling, which are easy to install and manufactured by using the most superior quality raw material. These are available to clients in various sizes and colors, which can be changed as per their requirements.



# Z-LINK

## ABOUT OUR SPECIAL SERVICES



### Epoxy Floor Coating



At Z - Link steel fabrication, we offer a range of fabrication work to prepare your valuable assets for the long run. We understand that materials technology can change, and that application equipment is becoming more sophisticated, which is why we offer top notch products and services for your needs. We understand the process thoroughly.



## Epoxy Floor Coating



At Z Link We Provide Wide Range Of Water Proofing Solution To Various Construction Sites Such As Commercial, Industrial And Residential Etc. We Use Latest Machineries With Expert Work Force That Meet International Standards.



# Z-LINK

**ABOUT OUR  
SPECIAL SERVICES**

# ABOUT OUR SPECIAL SERVICES



## False Ceiling Services



We specialize in false ceiling installation by creating innovative and unique designs that perfectly match the indoor setting. We offer to clients an attractive range of Fiber Ceiling, Metal False Ceilings&Aluminium False Ceiling, which are easy to install and manufactured by using the most superior quality raw material. These are available to clients in various sizes and colors, which can be changed as per their requirements.



# OUR MAJOR PROJECTS

CLIENT NAME	PROJECT NAME	TYPE OF WORK
EMIRATES INDUSTRIAL CONVERTING FACTORY - SHARJAH	UNDERGROUND FIRE SAFETY WATER TANK - CAPACITY 200000 US GALLONS	GRP LINING FIBER GLASS WATERPROOFING WORK - AREA 500 SQR MTR
MOHAMMED ABBAS PREMIUM CAR GARAGE - DUBAI	WAREHOUSE CAR GARAGE EPOXY FLOORING WORK	CEMENTITIOUS SELF LEVEL + EPOXY FLOORING COATING - AREA 400 SQR MTR
CAR MODS MODIFICATION AND ACCESSORIES WORKSHOP - DUBAI	WAREHOUSE EPOXY FLOORING	EPOXY FLOOR COATING - AREA 600 SQR MTR
AL BAHRI HARDWARE & SAFETY EQUIPMENT LLC - DIP 2	WAREHOUSE INTERLOCK & LANDSCAPING WORK	INTERLOCK, CURBSTONE & LANDSCAPING - AREA 1200 SQR MTR
THE SAGAR GROUP - DIAMOND MERCHANT - JLT DUBAI	OFFICE FITOUT WORKS - CONCORD TOWER JLT (CONCORDIA AUTHORITY)	GLASS PARTITION, FIRE SAFETY, WALL PAINTING & GEN FITOUT WORKS - AREA 100 SQR MTR
THE FIFTH WALL CONTRACTING - DUBAI	JALEELA FOUNDATION CAFÉ - INTERIOR FITOUT WORKS	CIVIL WORKS + GYPSUM & CEILING WORK CONTRACT
EMIRATES INDUSTRIAL CONVERTING FACTORY - SHARJAH	WAREHOUSE EPOXY FLOORING	EPOXY FLOORING COATING - AREA 1000 SQR MTR
SAM BUILDING CONTRACTING LLC - SHARJAH	RAK MALL, RAS AL KHAIMAH	EPOXY FLOOR COATING
TEAM TURNKEY INTERIORS - DUBAI	AL YOUSUF SURGICAL CLINIC SHARJAH	PAINTING WORK
EAGLE BUILDING CONTRACTING LLC - ABU DHABI	RESIDENT BUILDING	INTERNAL & ETERNAL PAINTING WORK
MB REAL ESTATE - DUBAI	JABEL ALI VILLAGE - AL FURJAN VILLA COMMUNITY	EXTERNAL WATER HEATER INSTALLATION + LEAKAGE REPAIR
CAR MODS MODIFICATION AND ACCESSORIES WORKSHOP - DUBAI	STEEL MEZANNINE WITH TWO GYPSUM CABINET	STEEL WORK AND FIT OUT WORK
MUFADDAL STEEL TRADING LLC - DUBAI	STEEL STORAGE YARD MODIFICATION WORK	FABRICATION OF NEW YARD WITH STEEL MEZANINE AND ADD STORAGE





## CONTACT US:

 +971 4 386 1940

 +971 55 949 5833

 [info@zlink.ae](mailto:info@zlink.ae)

 **No 201, Bay Sqaure, Business Bay  
Dubai, UAE**

 [www.zlink.ae](http://www.zlink.ae)