



EARTHING



LIGHTNING



ELECTRICAL



TRANSMISSION



EXOTHERMIC

⚡ Total Protection in Every Connections ⚡



TOTAL  **CONNEXONS**

Since 2003

توتال كونيكشن الكهربائية ش.م.م.
TOTAL CONNEXONS ELECTRICAL L.L.C



www.totalgcc.com

INTRODUCTION

TOTAL CONNEXONS ELECTRICAL LLC – young as a Company but dynamic and bold in its commitment in providing a complete solution in the fields of Earthing, Lightning, Exothermic and Electrical goods and accessories.

With a clear Vision since its inception in 2003 it has developed “SPEEDWELL” as a quality home brand and in its course of development it has amalgamated with various world class brands to become a Total solution provider in this region.

A unique combination of specialized technical expertise, awareness of market, prompt response and efficient service allows it to meet specific requirements of clients and puts it at par in this competitive world.

Strong marketing network and innovative research team and dedicated staff caters to a wide range of industry: including Civil, Mechanical, Electromechanically, Oil and Gas, Power Generation, Transportation, and other Public and Private Utilities.

Centralized operations and huge inventory is its strength in catering the needs of Middle East, African sub continent and reaching the rest of the World.

All our products meet world class quality standards like UL, KEEMA, ATEX, IEC, BS, etc.

We support in designing of LPS system in accordance with IEC/BSEN 62305, NFC 17-102 :2011 and Earthing in accordance with IEEE 80:2013, BS 7430.

PRODUCTS

- Earthing Accessories
- Lightning Protection
- Exothermic Welding System
- Cable Glands and Lugs
- Cable Marking System
- Cable Management System
- SS Cable Ties and Bands
- Panel Board Accessories
- Conduit and Accessories
- Heat Shrink and Busbar Sleeves



DUBAI - UAE

- Reem Development – Construction Mira Townhouse
- Jumeirah Village Iii(circle) Villas And Town
- Arabian Ranches, 316 Villas
- Arabian Ranches 2 Development, Lila Community – 219 Villas Project
- Arabian Ranches-2 / Rasha /rosa/yasmin Commuities -382villas
- Green Community West Extension Phase-iii
- Dubai Hills Business Park 1
- 52/42 Residential Tower
- Serena Casa Dora – Phase 2
- Emaar South Development Dwc Construction Of Urban I Stacked Townhouse
- Pinnacle Gym At Meydan
- Dubai Hill Mall – Dubai Hill
- Emaar Park Height 1 & 2
- Imperial Avenue
- Sobha Heartland At Meydan
- Construction Of 1388 Villas – Villanova
- Dubai Creek Hrabour Development (creek Horizon A019), Emaar Properties

ABU DHABI - UAE

- 1177 Mwp Solar Pv Project At Sweihan
- Etihad Rail
- Utility Plant, Distribution & East Middle Field – ADH Air Port
- Construction Of Sir Yani Private Beach
- Ain Al Fayda Emirati Housing Program Phase 1
- Uae Armed Force Command Of Military Works
- Abu Dhabi Indian School
- International Indian School
- Construction Of Neb Infrastructure
- Hydra Avenue Phase – 2
- Bnpp – Baraka Nuclear Power Plant
- Jimi Mall And Substation
- Sps - Mamsha Al Sadiya
- Al Dhabia – Adco
- Construction Of Al Marfa Police Station
- Satah Al Razboot Package 4
- Al Taweelah Alumina
- Reem Mall
- Icad Indl Effluent Treament Plant
- Borouge – Polymer Company

OTHER

- Al Ain Hospital Al Ain
- 11/04.15 Brick Built Substation Al Ain
- Mombasa Cement Factory Kenya
- 300kv Overhead Lines To Connect Kuwait
- Existing Lines With Rawdatain (w) & Rawdatain (x) Substations
- 300/132/11kv Stations

- KNPC CFP Mab#1 Building And Field Kuwait
- Electrical Works
- KNPC CFP Mab#2 Project Area 3 Kuwait
- Earthing Works - Electrical And Instrumentation Work
- 3x20mva, 33/11kv Primary Substation. Muscat-oman
- Oil Terminal And Jetty At Hamriya Fz Sharjah
- Al Fardan Tower -1 Sharjah



Speedwell was established in 1982 and is now one of the leading manufacturer of Earthing & Lightning Protection System and electrical Accessories. Since its inception company has continued to expand its product range, technology and its presence by innovation and dedication.

EARTHING & LIGHTNING PROTECTION COMPONENTS

- Earth Rods Bonded & Solid Copper
- Clamps for rods and tape
- Bare / Tinned / PVC Copper Tape & Earthing Cable
- DC Clips, Square Clamps
- Earth Pit (Concrete / Polyethylene), Earthing Compound
- Earth Lattice & Earth Plate
- Earth Clamp for Pipe
- Bonds for Structural & Pipe
- Split Bolts, C Crimps, Flexible Braids
- Earth Bar, Disconnecting Link, Earth Bonding Point
- Air Rod Terminal, Multi Point, Air Base
- Test and Junction Clamps, Conductor Fixings

BS EN & IEC 62305 • BS 7430 • IEEE 80 • UL 467



- 1 ROD BRACKETS-SIDE MOUNTING BRACKETS
- 2 AIR ROD TO CABLE COUPLING
- 3 PVC COVERED COPPER TAPE
- 4 NON METALLIC DC TAPE CLIP
- 5 EARTH HOUSING HEAVY DUTY
- 6 EARTH ROD SEAL
- 7 FLEXIBLE BRAID BOND
- 8 AIR ROD SET
- 9 RIDGE SADDLE
- 10 BARE COPPER TAPE
- 11 SQUARE TAPE CLAMP

- 12 BI-METALLIC CONNECTOR TAPE TO TAPE
- 13 ROD TO TAPE CLAMP-TYPE 'A'
- 14 COUPLER HEAVY DUTY
- 15 EARTH ROD
- 16 ROD TO CABLE CLAMP TYPE 'GUV'
- 17 EARTH BONDING POINT
- 18 OBLONG TEST OR JUNCTION CLAMP
- 19 B BOND
- 20 BACK PLATE HOLD FAST STEM
- 21 PVC COVERED COPPER CONDUCTORS
- 22 EARTH BAR AND DISCONNECTING LINKS



- 23 ROD TO CABLE CLAMP - TYPE 'G'
- 24 CONCRETE INSPECTION PIT
- 25 EARTH BOSS
- 26 EARTH LATTICE
- 27 PLATE TYPE TEST CLAMP
- 28 EARTH PLATE
- 29 ONE HOLE CLIP
- 30 TEE CLAMP
- 31 SOLID CIRCULAR CONDUCTORS
- 32 HEAVY DUTY CAST CABLE SADDLE
- 33 DC TAPE CLIP
- 34 AIR TERMINAL BASE

TOTAL PROTECTION IN EVERY CONNECTION

EARTHING

						
COPPER BONDED EARTH ROD SOLID BONDED EARTH ROD	EARTH ROD SEALS	CONCRETE INSPECTION PIT	PVC EARTH PIT	INSPECTION HOUSING EARTH BARS	EARTH PLATE	EARTHING LATTICE
						
U BOLT ROD CLAMP - TYPE 'E1'	ROD TO TAPE CLAMP - TYPE 'E2'	ROD TO CABLE CLAMP - TYPE 'GUV'	U BOLT PIPE TO CABLE CLAMP - TYPE 'PUB'	WATER PIPE GROUND CLAMPS - TYPE 'KP'	RWP BOND	WATERMAIN PIPE BOND
						
SINGLE PLATE DOUBLE PLATE TOWER EARTH CLAMP	METALWORK BOND	B-BOND	EARTH BOSS	EYE BOLT	EARTH BONDING POINT	STATIC EARTH RECEPTACLE
						
SPLIT BOLT CONNECTORS	CRIMP CONNECTORS - TYPE 'C'	FLEXIBLE BRAID BOND	EARTH BARS AND DISCONNECTING LINKS EB6	EARTH BARS AND DISCONNECTING LINKS EB6-1	EARTH BARS AND DISCONNECTING LINKS EB6-2	EARTH BARS AND DISCONNECTING LINKS DCL1S

LIGHTNING

						
MULTI POINT AIR ROD AIR BASE	STRIKE PAD	FLAT SADDLE - TYPE 'C'	RIDGE SADDLE	AIR ROD BASE - CABLE	ROD BRACKETS SID MOUNTING BRACKETS	AIR ROD TO TAPE CABLE COUPLING
						
BLACK STONE YELLOW & GREEN GREEN BROWN WHITE PVC COVERED COPPER TAPE	BARE COPPER TAPE	TINNED COPPER TAPE	PVC COVERED COPPER CONDUCTORS	FLEXIBLE COPPER BRAIDS	DC TAPE CLIP	
						
BACK PLATE HOLDFAST STEM	GLAZING BAR HOLD FAST	NON METALLIC DC TAPE CLIP	GLUE DOWN DC TAPE CLIP	TAPE CLIP ONE HOLE CLIP	BI-METALLIC CONNECTOR TAPE TO TAPE	SQUARE TAPE CLAMP
						
OBLONG TEST OR JUNCTION CLAMP	PLATE TYPE TEST CLAMP	SCREW DOWN TEST CLAMP	MULTI PURPOSE CLAMP	PIPE BOND	INTERFACE TEST AND JUNCTION CLAMP	SQUARE CONDUCTOR CLAMP
						
TEE CLAMP	JOINTING CLAMP	TEST CLAMP	HEAVY DUTY CAST CABLE SADDLE	SQUARE CONDUCTOR CLAMP	RE-BAR CLAMP	DENSOL TAPE

Speewell was established in 1982 and is now one of the leading manufacturer of Earthing & Lightning Protection System and electrical Accessories. Since its inception company has continued to expand its product range, technology and its presence by innovation and dedication.

ELECTRICAL AND PANEL BOARD COMPONENTS

- Cable Gland and Accessories
- Tinned Copper Lugs & Ferrules
- Flexible Conduit & Accessories
- Backlight sheet All size up to 25mm Thickness
- Copper Bush / MS Spacers
- PVC handle 6" & Knobs
- Panel Locks & Key all type Round, Square, Triangle
- Blanking Plate 24mod
- Din Rail, 'G' Rail, 'C' Rail all size
- Insulators - Conical and Cylinder type
- Brass neutral link

BS 6121 • IEC 623444 • IEC 61238 • UL 486

ELECTRICAL	 CABLE GLAND KITS	 BRASS CABLE GLAND - BW 4 PART	 BRASS CABLE GLAND - CW 4 PART	 BRASS CABLE GLAND - E1W 4 PART	 BRASS CABLE GLAND - A1-A2 TYPE	 BRASS CABLE GLAND - PG TYPE
	 BRASS CABLE GLAND - MARINE TYPE	 BRASS EARTH TAGS	 PVC / LSF SHROUD	 IP WASHERS	 SERRATED WASHERS	 BRASS LOCK NUT
	 BRASS WIPING GLAND	 BRASS MALE / FEMALE ADAPTOR	 BRASS MALE BUSH	 BRASS STOPPING PLUG	 PVC COATED GALVANIZED STEEL FLEXIBLE CONDUIT	 NICKEL PLATED BRASS LOCK NUT
	 BRASS END PLUG	 BRASS FEMALE BUSH	 GALVANIZED STEEL FLEXIBLE CONDUIT	 PVC CORRUGATED FLEXIBLE CONDUIT	 BRASS FLEXIBLE CONDUIT CONNECTOR	
	 TABULAR CABLE LUGS WITH INSPECTION HOLE	 BRASS MALE / FEMALE REDUCER	 LONG PALM WITH - 2 HOLES	 CABLE LUGS - 4 HOLE FOR TRANSFORMER	 BI-METALLIC LUGS	 PIN TYPE TERMINALS
	 TABULAR CABLE LUGS WITHOUT INSPECTION HOLE	 TABULAR CABLE LUGS - BELL MOUTH	 CABLE LUGS - LONG BARREL	 COPPER FERRULES	 ROUND DOUBLE BIT TYPE	 TRIANGLE TYPE
	 ANGLE TUBULAR LUGS, 90°	 ANGLE TUBULAR LUGS, 45°	 COPPER REDUCING LINKS	 PANEL BOARD HINGES	 SQUARE TYPE	 PANEL BOARD LOCK AND KEY
	 NEUTRAL, EARTH LINK, BLOCK, TERMINAL & CONNECTORS					 EARTH CLAMPS
						 DIN RAILS, MOUNDING, TERMINAL BLOCKS, INSULATOR AND COPPER BUSH

Speedwell conduit system cover complete range of Flexible and Rigid conduit along with allied accessories. Precise thread facilitate easy installation of conduit accessories and minimize installation time.

Class 4 corrosion protection is achieved with hot dip galvanized coating applied inside and outside which offer a high degree of corrosion protection.

Conduits & Pipe Fittings & Accessories

- Class 4, HDG Conduits
- Class 2 & 3 Conduits
- Couplers & Bends
- Junction and Adaptable Boxes
- Channel Pipe Clamps & Rubber Nut Clamp
- GI & Brass Bushes & End Plugs
- GI & Brass Reducers
- Distance & Bar Saddles.
- Nail Clamp & Hanger Clamp

BS EN & IEC 61386 • BS 4568 • BS 731



Malleable Iron Accessories





Cable Clamping and Marking

www.speedwellindia.com

BSCO is a pioneer brand in the field of cable accessories. It has developed wide range of products to provide specific needs for standard and LSF cables. Products designed and engineered for UV, weather resistance applications and are easy to install.

MAIN PRODUCTS

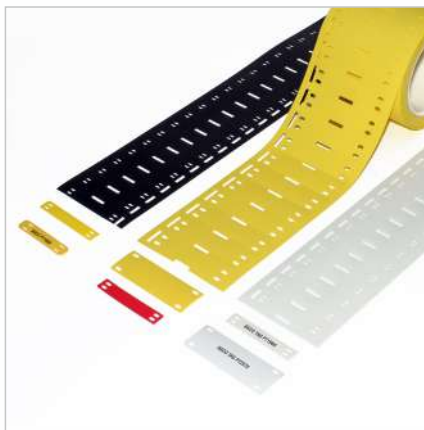
- Stainless Steel - Ball Lock Uncoated
- Stainless Steel - Ball Lock Coated
- Stainless Steel - Ball Lock Spring Type Uncoated
- Stainless Steel - Ball Lock Spring Type Coated
- Stainless Steel - Ladder Type (Multilock) Uncoated
- Stainless Steel - Ladder Type (Multilock) Coated
- Stainless Steel - Releasable Uncoated
- Stainless Steel - Releasable Pure Polyester Coated
- Stainless Steel - Releasable PPA Coated
- Nylon Cable Ties
- Marker Tags & Carrier Strips
- ID Marker Tags
- Bands Regular & High Tensile
- Utility Bands
- Heavy Duty Bands
- PPA 571 Coated Bands
- All Purpose Bands PPA 571 Coated
- All Purpose Bands Uncoated
- Aluminium Perforated Strip
- Pre-Cut Band and Buckle
- Precut Assembled Straps
- Buckles (Jaw Type - Wing Type - Screw Type)
- Sign Mounting Brackets
- AT4679 Cable Tie Automatic Gun
- RT2S4679 Cable Tensioning Plier
- BT6919 Band and Buckle Crimping Tool
- BT0620 (Bantam Tool)
- AT2248 Cable Tensioning Tool
- Aluminium Single Way Cable Cleat - Single Bolt Fixing (Claw type Design)
- Aluminium Single Way Cable Cleat - Two Bolt Fixing
- Aluminium Trefoil Cleats - Single Bolt Fixing
- Aluminium Cable Cleat Trefoil Type - Two Bolt Fixing Special Design
- Aluminium Cable Cleat Trefoil Type - Special Design (Strip Type Cleats)
- Polyethylene Cable Cleats Single & Two Bolt Fixing
- Polyethylene Cable Cleats Two Bolt Special Design & Trefoil Type
- Fire Cable Clips & Saddles for Mineral Insulated & Fire performance cables.

IEC 62275 • Zero Halogen • ROHS Compliant

HS AND BUSBAR SLEEVES



PU MARKING TAGS



MARKING TUBE PRINTER



BALL LOCK (Uncoated)



BALL LOCK (Coated)



BALL LOCK SPRING (Uncoated)



BALL LOCK SPRING (Coated)



LADDER TIE (Uncoated)



LADDER TIE (Coated)



RELEASABLE (Uncoated)



RELEASABLE (Coated)



CABLE TIES AND TOOLS



SS BANDS AND BUCKLES



VARIOUS MARKERS AND TAGS



SS MARKERS AND TAGS



CABLE CLEATS



thermOweld®

The Contractors Choice

USA

Exothermics Grounding, Lightning Protection

www.thermoweld.com

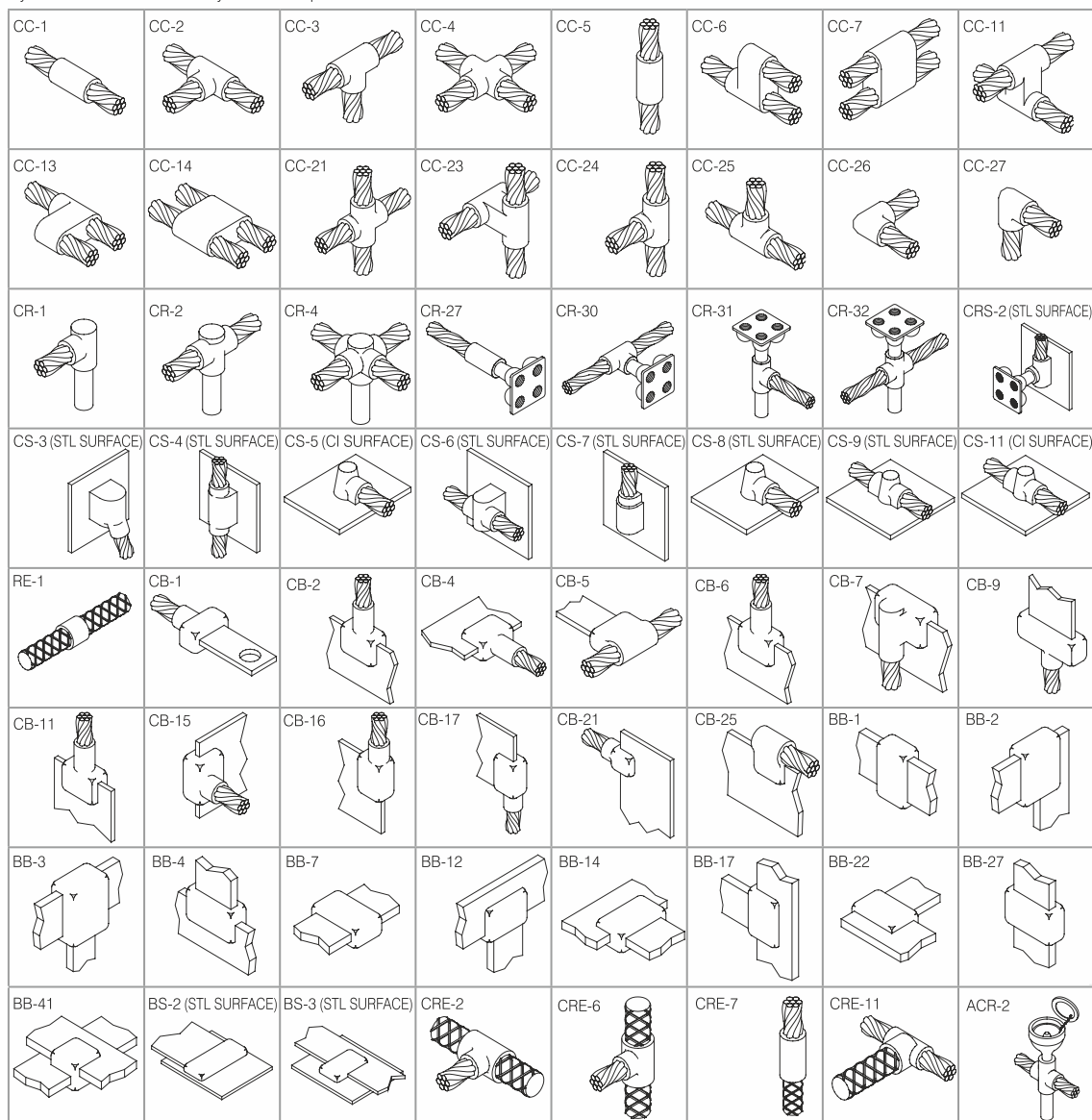
thermOweld® is a process of welding copper to copper, copper to steel and copper to ductile iron. The exothermic reaction takes place in a semi-permanent graphite mold with a special formula of copper oxide and aluminum.

thermOweld® connections are solid copper molecular bonds that do not loosen or corrode throughout the life of the host structure. These bonds are the superior connection method for the most reliable and highest longevity of grounding, lightning protection, cathodic protection and other critical infrastructure systems.

MAIN PRODUCTS

- Graphite Molds • Single Shot Molds • Weld Metals/EZ • Handle Clamps • Battery Units • Various Tools

If you cannot find the necessary connection please contact thermOweld® at 1-800-558-1373 for assistance or visit our web site at www.thermoweld.com.



Note: Contact thermoweld® for information about these and other weld types not listed.

TOTAL PROTECTION IN EVERY CONNECTION



Making a **thermOweld**® Connection



- 1 Position cleaned conductors in mold after making sure mold is dry, by pre-heating or making a test joint.



- 2 Place metal disc in bottom of mold crucible



- 3 Dump powder into crucible, being careful not to loosen all the starting powder.



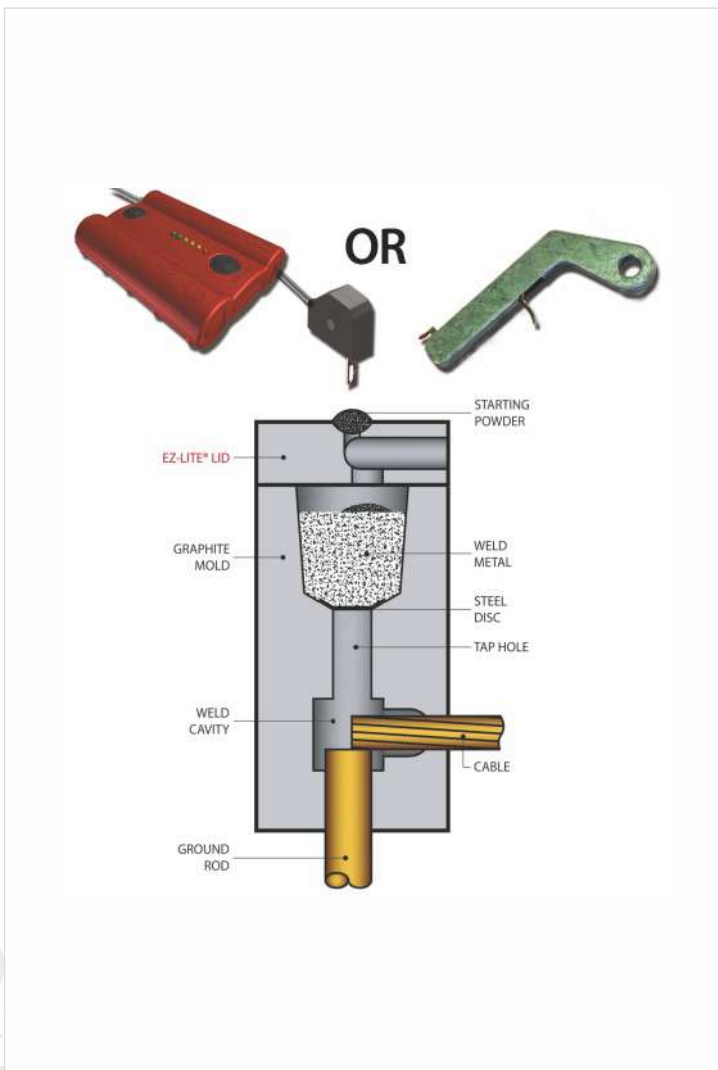
- 4 Close lid and Place a small amount of starting powder in the ignition pocket.



- 5 Ignite the starting powder with the Flint Ignitor.



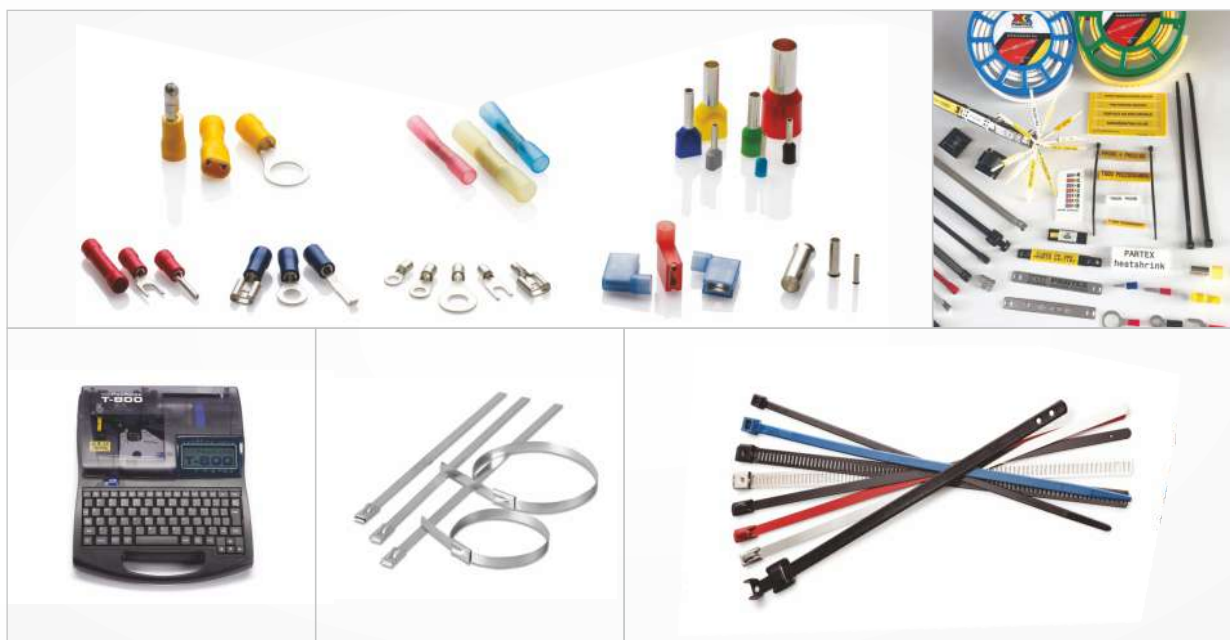
- 6 Remove weld and clean mold before making next connection.



Partex AB have many years' experience of developing and manufacturing marking systems. The tangible results can be seen in the form of a range of products that meet the most rigorous of international requirements and can be found in installations practically the whole world over

MAIN PRODUCTS

- Cable Identification System
- Cable Markers/Carrier Strips
- Customized and Profile marking Tube
- Printing Machines
- Stainless Steel Cable Ties (Uncoated/Coated)
- (Ball Lock / Ladder Type/ Releasable)
- Bands (Straps) and Buckles (Clips) Systems
- PVC /Heat Shrink Sleeve
- Insulated /Non Insulated Cable Lugs
- Partool Hand Tool



RCN is leading manufacturer of Industrial Cable Glands, and Electrical Accessories for the chemical energy, pharmaceutical and off-shore sectors.

Products are in full compliance with the Directive 2002/95EC "RoHS"

The Cable Glands Accessories are built to be installed in the following areas:

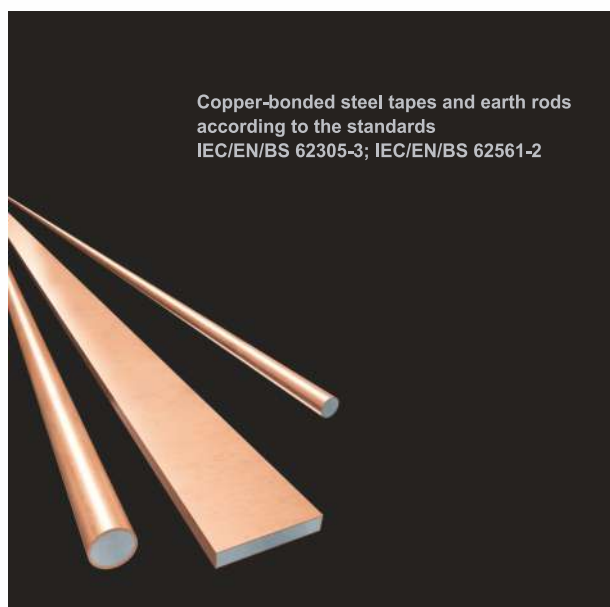
- Zone 1 and 2, 21 and 22: EExd/EEExe execution (GOST: 1ExdIIC/2Exell).
- Group 1(mines), Group 2(non-mining) with explosive atmosphere of Gas, Vapors, Smokes and dusts (II2 GD).
- Temperature range from -70 °C to +20 °C with degree of protection IP66/68.



CBM TECHNOLOGY – GALMAR is Polish company, manufacturer of Earthing and Lightning Protection Accessories that meets standard like IEC/EN 62305-3, IEC/EN 62651-2, HD 60634-5-54, EN 50522.

MAIN PRODUCTS

- Copper Bonded Rods/conductors
- Lightning Protection Accessories
- Earthing Accessories
- Exothermic Welding System
- ESE System





Lightning and Surge Protection Systems

www.cirprotec.com

CPT is pioneering Spanish company involved in the design and manufacturer of lightning and surge protection devices whilst CIPROTEC provides consulting services and customized solutions for both companies and individuals. It belongs to a holding company specialized in technology which gives it access to several design and manufacturing centers and laboratory .

MAIN PRODUCTS

- Lightning rods with ESE system
- Faraday cages
- Earthing systems
- Surge Protection for Electric and Electronic Equipments.



Jointing Kits, Rubber, Resin & Gel for all kind of Cable Application

www.raytech.it

Raytech , located near Milano, the most important economic-financial area in Italy, is the company with the widest range of accessories and components for electrical cables in the world in terms of production.

Passion for design and innovation has allowed Raytech to evolve and adapt to the needs of constantly expanding national and international market standards, as well as to meet the challenge of satisfying and surprising end users with new or improved products extremely rapidly, without ever skimping on the same scrupulous quality which has always distinguished them in the production field.

MAIN PRODUCTS

- Jointing Kits
- Rubber
- Resin
- Gel for all kind of Cable Application



MARKETS



OIL & GAS



PETROCHEM



POWER STATION



REFINERY



RENEWABLE ENERGY



RAILWAYS



TELECOMMUNICATION



POLE & SIGN MOUNTING



SOLAR ENERGY



TUNNELS AND BRIDGES



PUBLIC BUILDINGS



MINING



CONSTRUCTION



TOTAL PROTECTION IN EVERY CONNECTION



TOTAL CONNEXONS

Since 2003

توتال كونيكشن الكهربائية ش.ط.م.
TOTAL CONNEXONS ELECTRICAL L.L.C

U.A.E.



AL QUOZ - DUBAI

TOTAL CONNEXONS TRADING LLC
WH S-7, STREET 24, AL QUOZ IND. 3
NEAR GALADARI DRIVING CENTER
TEL: +971 4 3242444 / 3247444
FAX: +971 4 3242445
Email: dubai@totalgcc.com

U.A.E.



DEIRA - DUBAI

TOTAL CONNEXONS ELECTRICAL LLC
P. O. BOX: 172344, DUBAI, U. A. E.
TEL: +971 4 2281085
FAX: +971 4 2281095
Email: deira@totalgcc.com

OMAN



MUSCAT

TOTAL CONNEXONS ELECTRICAL
P. O. BOX: 1384 PC 130,
GHALA INDUSTRIAL AREA,
SULTANATE OF OMAN
TEL: +968 24505831
FAX: +968 24591181
Mob: +968 92868690
Email: oman@totalgcc.com



www.totalgcc.com

