



TENT
HOUSE
TENTHOUSE CONTRACTING LLC

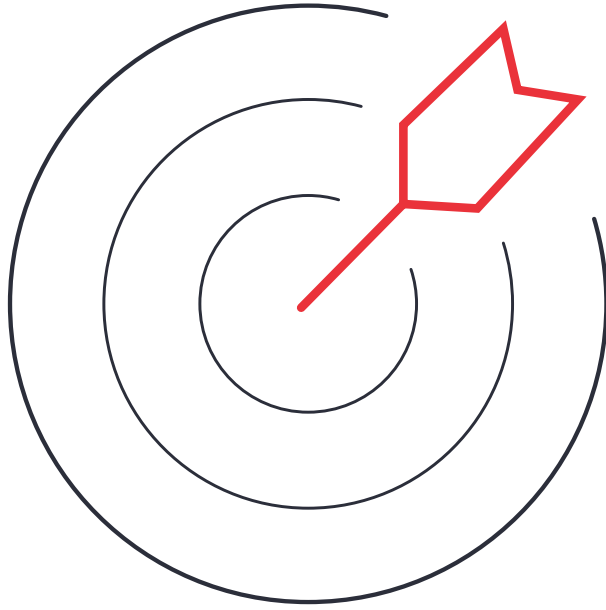
www.tenthouseuae.com



INTRODUCTION

We take opportunity to introduce ourselves as one of the leading company of suppliers, Fabricators and installers of Aluminum, Pergola and carshade, Glass, UPVC Windows, Landscaping works , Doors, Steel and Stainless Steel Works Kitchen Cabinets, Aluminum Curtain wall Composite Panel (Cladding)intheU.A.E. The range of our experience has included from simple window and door to the very stylish Curtain Wall solution. We have been in operation since 2015 and during this tenure we have been associated with a great number of Architects ,Consultants and Contractors. Expert teams of engineers and consultants can boost your project with unique integrated solutions through value assessments and site management. Competitive pricingand built-incost saving will ensure the success of your venture in both the short and long term.

TENT
HOUSE



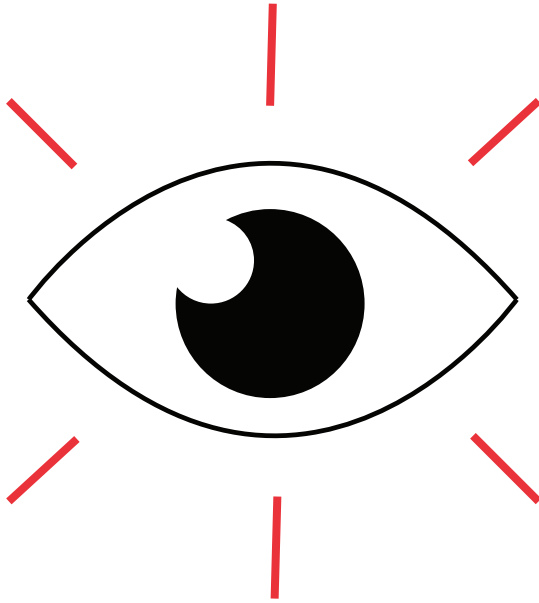
OUR MISSION

We are committed to providing the most innovative and advanced solutions, featuring exclusive, cutting-edge technology. While our systems are designed with next-generation features, they remain simple, accessible, and user-friendly, ensuring that everyone can benefit from them.

Specializing in automation systems, particularly for entrances, our mission is to enhance the lives of our customers through reliable, efficient, and forward-thinking solutions.

This is who we are today: A company focused on addressing the needs of the present while keeping a keen eye on the future, constantly evolving to meet tomorrow's challenges.





OUR VISION

We are committed to creating a work environment where people are empowered to grow, excel, and become the best versions of themselves. Through our dedication to excellence, we present a portfolio of high-quality Entrance and Security Automation solutions, designed to anticipate and exceed the desires and needs of our customers.

With a focus on innovation, efficiency, and customer satisfaction, we strive to save you both time and money. Our extensive experience, coupled with the use of top-tier equipment and parts, allows us to consistently deliver exceptional service that you can trust.



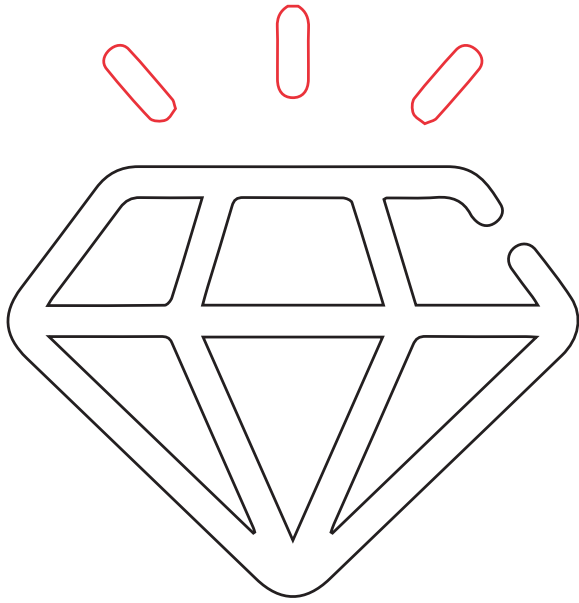


QUALITY PRODUCTS

At Tent House Contracting, we are driven by a passion for delivering high-quality, state-of-the-art, safe, and energy-efficient products. Our unwavering commitment to quality motivates us to continuously exceed customer expectations by meeting every requirement with precision and care.

Each of our products and services undergoes rigorous quality control, ensuring that every delivery is backed by our no-compromise approach to excellence. This commitment has fostered a work culture that prioritizes quality at every stage.



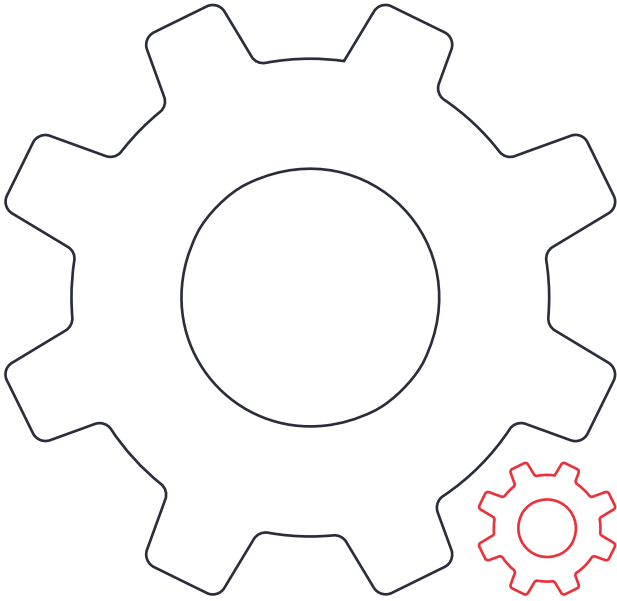


OUR VALUE

At Tent House Contracting, our values are the foundation of everything we do:

- **Trust:** We believe in building long-lasting relationships with our clients through transparency, reliability, and accountability.
- **Innovation:** We continuously push the boundaries of technology, delivering cutting-edge solutions that enhance efficiency and safety.
- **Customer Satisfaction:** Our customers are at the heart of our business. We strive to not only meet but exceed their expectations by providing top-tier products and exceptional service.





WHAT WE DO?

- All types of detailed engineering works (Aluminum, Glass, UPC, Kitchen cabinets, Stainless Steel & Composite panel Cladding)
- Pergola & Car Shade Structures
- Aluminum Curtainwall Unitized & Structurally Glazed stick
- Comprehensive Landscaping Works
- We offer a wide range of tents, including Marquee Tents, Double Decker Tents, Tower Tents, Pagoda Tents, and Arcum Tents
- Custom Awnings Solutions
- All types of Automatic Gates
- Durable Garage Doors
- Aluminum and Glass partitions, Handrail, Frameless Glass Door, Spider Fitting



Pergola & Car shade

We provide the superior quality of pergola and car shade with customization in design and color with maximum protection. We can customize the car parking shades according to your needs. Our highly engineered products are very strong and fit for the car parking purpose. We are able to provide you many types of parking shades like (Top Support Cantilever, Down Support Cantilever, Double Hanging Support Cantilever, Arch Cantilever, truss parking shades, Aluminum car parking shades) Etc. We customize it in a variety of RAL colours various shapes. You can now transform your outdoor area into a functional space with our bespoke aluminum louvered pergola. They also maximize shade and enhance your backyard area, creating an attractive outdoor space.



Landscaping works

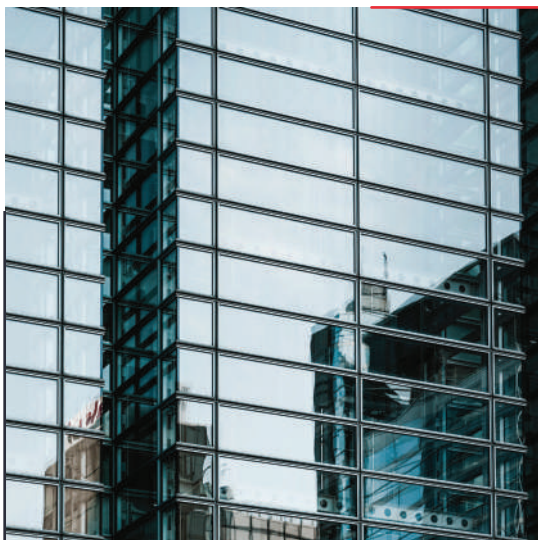
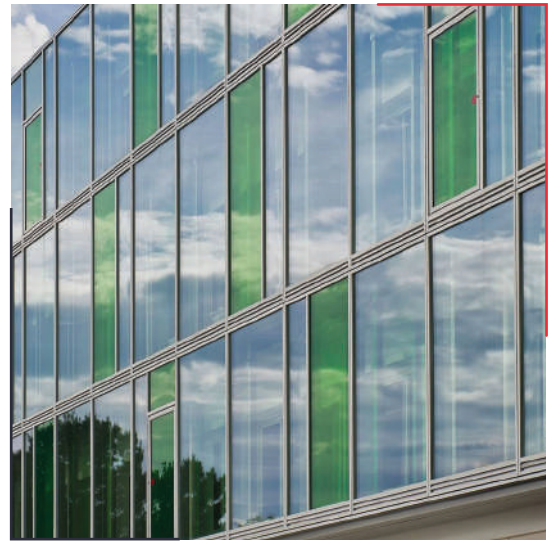
We offer expert landscaping and gardening design in dubai , turning your space into your own oasis of serenity , whoever said the grass is greener , our gardening design solutions can be customized to suit your needs – we offer our services to property developers , institutions , hotel , healthcare provides , parks and private residences , handling both commercial and residential landscaping services in Dubai

Customer service and satisfaction are at the roof of what we do putting us among the leading landscaping companies in dubai , Tent house landscaping we work on fully understanding and meeting your needs our designers , architects and gardeners strive to create vibrant spaces and uplifting surroundings giving property a health touch of life bring happiness and serenity



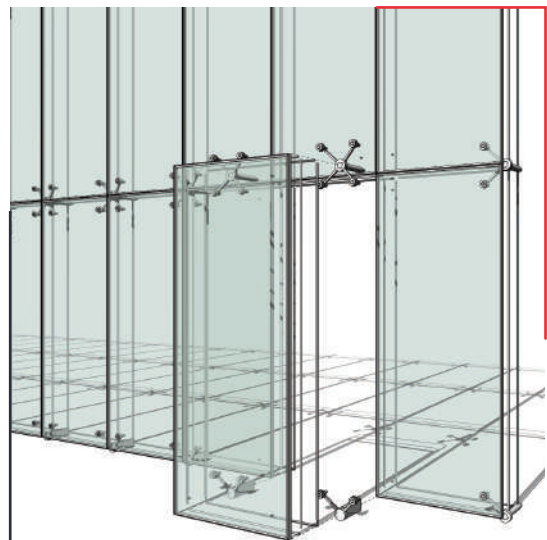
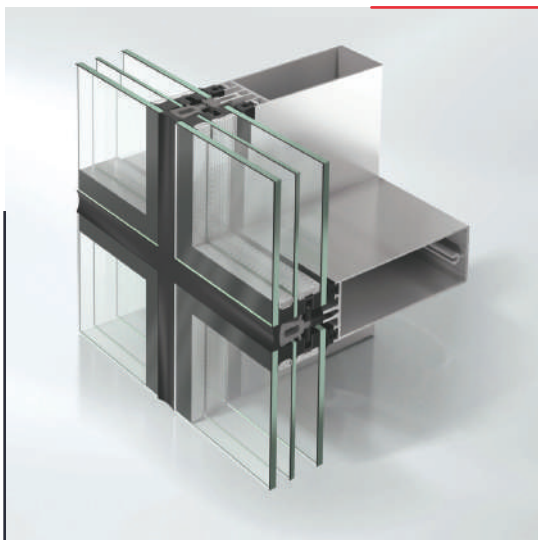
Aluminum Curtain Wall

Our company supplies a vast range of ideal curtain wall frames that are fabricated from the best quality aluminum. TENT HOUSE has soundly placed itself as one of the most superior aluminum curtain wall frames traders based in the UAE. We construct the type of aluminum curtain wall frames that improve the aesthetics of your premise and make them feel very comfortable on the inside. From domestic and residential assignments to larger building projects.



Aluminum Curtain Wall

Our supreme quality Aluminum curtain walls can withstand any weather, especially the extreme heat of the UAE. The thermal insulation in these curtain walls does the trick and keeps those harsh rays outside the building. We also use special drainage methods to allow more airtightness and maintain the air-conditioning inside even during the extreme weather conditions. Our team can construct aluminum curtain walls with seamless and coherent integration for various kinds of doors, sun screening systems, windows, offering a complete solution for your facade.



Double Decker Tent

Double decker tents are widely used for the spectator stands, restaurants, lounges, and etc. It is superior to the traditional buildings, which is easy to be installed and dismantled. Due to the use of translucent PVC and PVDF fabrics, the double decker tents are environment-friendly and can reduce the operating cost.



Marquee Tent

Tent House offers marquee tents with an expansive span width ranging from 3m to 70m, providing flexibility for any event size. With a bay distance of either 3m or 5m, there is no limit to the tent's length, making it highly adaptable. As one of the most versatile and widely used tent series, marquee tents can be customized with glass walls, glass doors, ABS walls, air conditioning, flooring, and lighting to create the perfect event space tailored to any need.



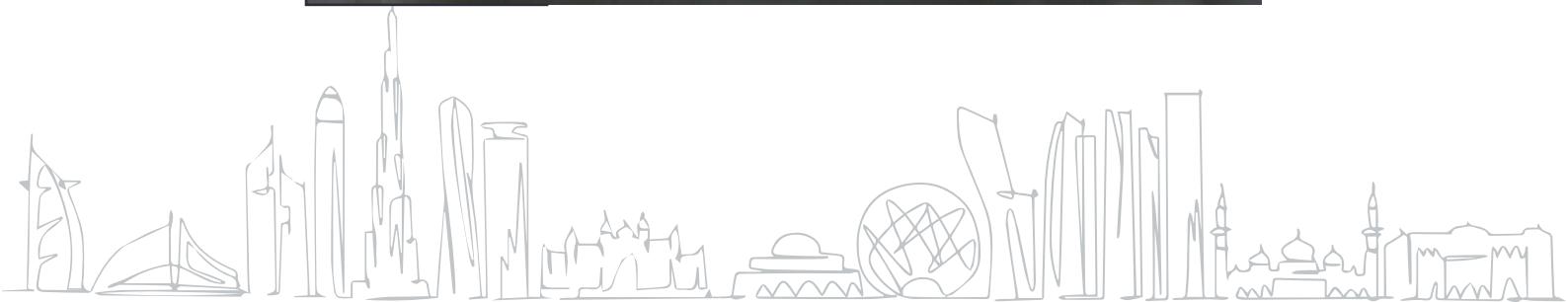
Tower Tent

Tent House's party tents are perfect for weddings, parties, exhibitions, storage, and sports events. Customizable with options like glass walls, doors, and premium flooring, they create a captivating atmosphere. These versatile tents seamlessly adapt to any occasion, ensuring a memorable experience every time. From elegant weddings to lively sports events, Tent House has you covered.



Polygonal Tent

The polygon tent offered by Tent House comes in a variety of shapes, including hexagons, octagons, and decagons, to suit any unique event or space requirement. With a top height of up to 18m and a maximum diameter of 50m, it provides ample room and flexibility. This spacious, clear-span design ensures a visually impressive and adaptable solution to meet every customer's specific needs.



3-6m pagoda tent

Pagoda tent can be used as separated unite alone or connected with the big marquee tent for some unique function, widely for outdoor weddings, business activities and parties, etc. The popular sizes including 3m x 3m, 4m x 4m, 5m x 5m, 6m x 6m and 10m x 10m, etc.



Arcum Tent

The Arcum Tent stands out with its elegant overhang and arched roof design, making it a popular choice for various events. In addition to common PVC sidewalls, options like glass walls, ABS hard walls, and sandwich panels offer flexible customization. Accessories such as glass doors, VIP cassette flooring, lining, and curtains enhance its appeal, while easy assembly and mobility ensure convenience. Ideal for weddings, church gatherings, exhibitions, and sports, the Arcum Tent offers versatile and stunning event solutions.



Awnings

We have a diverse range of rolling shutter solutions to meet various needs, including Premium Full Flat Galvalume Perforated RS, Aluminium Window RS, Polycarbonate RS, Stainless Steel Grill RS, and Aluminium Roof Top Rolling Shutters designed for sun protection. Each option is crafted for durability and functionality, offering customizable features such as bespoke sizing, a variety of color choices, premium powder coating for a superior finish, and smart control technology. These features ensure a seamless blend of style, security, and convenience for any setting.



Retractable Awning



Conservatory Awning



Window Awning



Serge Ferrari



Residential Entrance Gate

We are a leading manufacturer and supplier of premium designer gates crafted from stainless steel (SS), galvanized iron (GI), and cast iron. Our high-grade main gates are known for their low maintenance, durability, and elegant custom-built designs. We specialize in various gate types, including curved sliding, telescopic, bi-folding, and cantilever, all integrated with advanced automation systems. These systems allow hassle-free operation via remote or mobile control, providing ultimate convenience.

Our premium automatic gates offer enhanced security, reliability, and long-lasting performance, making them the perfect choice for your property.



Gate Automation

A no-compromise solution in design and specialized automation systems, allowing users to operate entry gates hassle-free and with maximum security. Our system ensures seamless functionality without the risk of any security breaches.



Roller Type Swing Gate Opener



Sliding Gate Operators

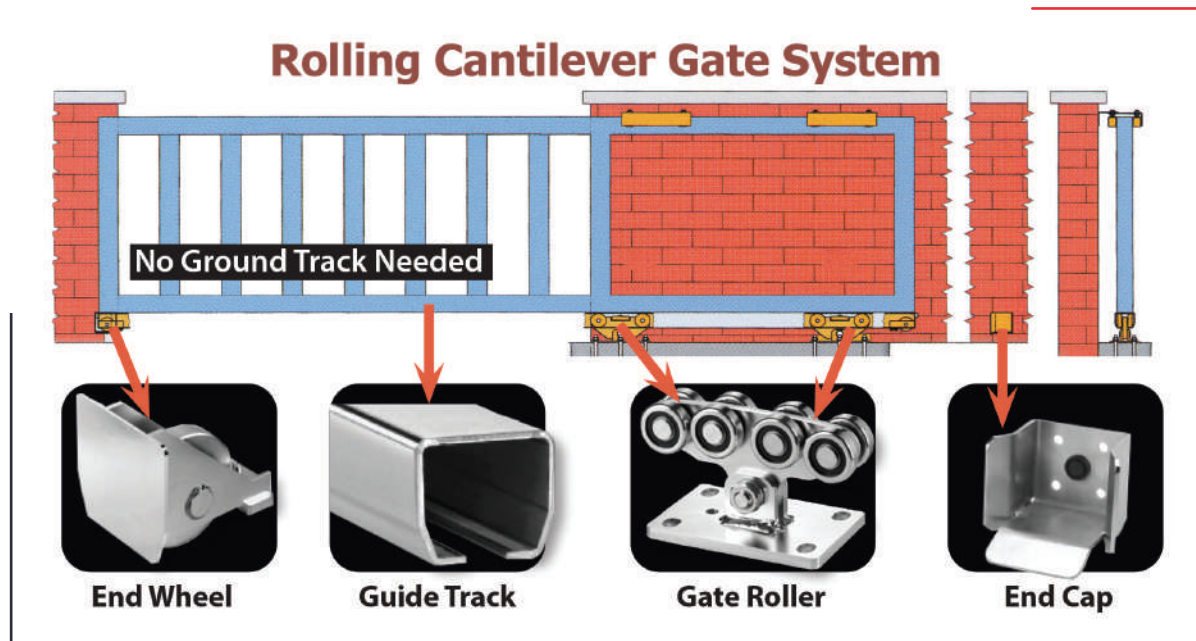


Liner Type Swing Gate Opener



Cantilever Sliding Gates Hardware

The cantilever gate system is ideal for high-traffic industrial and commercial properties, particularly those with entrances on an incline or where using a ground track isn't feasible. Its design allows it to work smoothly on uneven surfaces, making it a perfect choice for driveways with steep inclines.



Unlike traditional gate systems, the cantilever gate has no ground track. It relies on a bottom rail and two sets of enclosed rollers to facilitate opening and closing. These rollers are evenly spaced and anchored to ensure stability. An end cap or post prevents the gate from slipping, and an optional wheel ensures proper alignment when the gate is closing, providing additional support.

This system offers numerous advantages, including minimal disruption to driveways since no track is required on the ground. It operates quietly, with no noise from wheels, and reduces maintenance needs by eliminating track-related wear and tear. Its design minimizes debris build-up, allowing the gate to open easily without obstruction, making it a durable and low-maintenance choice for busy entrances.



Garage doors

The garage is often one of the most prominent features of a home's exterior, and a well-designed garage door can greatly enhance your home's curb appeal. Our garage doors not only offer style and aesthetic appeal but are also engineered for safety, security, and ease of operation. Whether manually or with remote control, the spring-assisted mechanism ensures smooth and quiet movement for maximum convenience.

Our garage doors provide the ultimate combination of convenience, allowing you to open them remotely without leaving your vehicle, while also offering superior space-saving benefits.

Compared to conventional rolling shutters, our sectional overhead doors boast a stronger design, complete sealing, and robust construction. The sandwich panel design ensures excellent heat insulation and soundproofing, making them both attractive and highly functional.



Glazed Aluminum Garage Door

Our sleek aluminum garage doors combine glass and aluminum to give your home a contemporary, minimalist look. The expansive full-view glass panels seamlessly blend your indoor and outdoor spaces, elevating the beauty of patios and glass walls. Designed with durable, anodized aluminum, these doors require minimal maintenance, offering a rugged, long-lasting solution for your modern home. Part of our Contemporary Aluminum Collection, this garage door is the latest innovation in functional elegance.

In addition to its striking aesthetics, the design ensures maximum natural light penetration while maintaining privacy. Whether you're looking to make a bold architectural statement or create a welcoming atmosphere with open views, this aluminum garage door is the perfect complement.



Aluminum Gates

Our aluminum gates offer the perfect blend of elegance, durability, and functionality. Designed to withstand harsh weather conditions while maintaining their aesthetic appeal, these gates provide unmatched security and style for your property. With a range of customizable designs, finishes, and automation options, we ensure a seamless integration into your space. Whether it's for residential or commercial use, our aluminum gates are built to last and crafted to impress. Choose innovation and quality with our superior gate solutions.



Louvered Roof and Windows

Our state-of-the-art, fully automated louvered roofing system brings a new level of innovation to roof design. This eco-friendly solution allows you to enjoy natural sunlight and fresh air, while also providing reliable rain protection with just the flick of a switch.

The louver roof offers both style and versatility, making it perfect for patios, courtyards, open-air coffee shops, restaurants, atriums, indoor and outdoor pool areas, terraces, barbecues, and other recreational spaces. The possibilities are limitless!

Crafted from heavy-duty extruded aluminum, this openable roof system lets you seamlessly control the amount of light and airflow. Whether you prefer more of the outdoors or the comfort of being indoors, you can adjust the louvers to suit your needs—creating the perfect balance of sunlight, ventilation, or even rain protection.



Linear Opening Roof

The 180mm Linear Opening Roof enhances and perfectly complements modern architectural designs. With bold, angular lines and precisely defined edges, each blade is chamfered at 45 degrees, offering a sleek tongue-and-groove effect when closed.

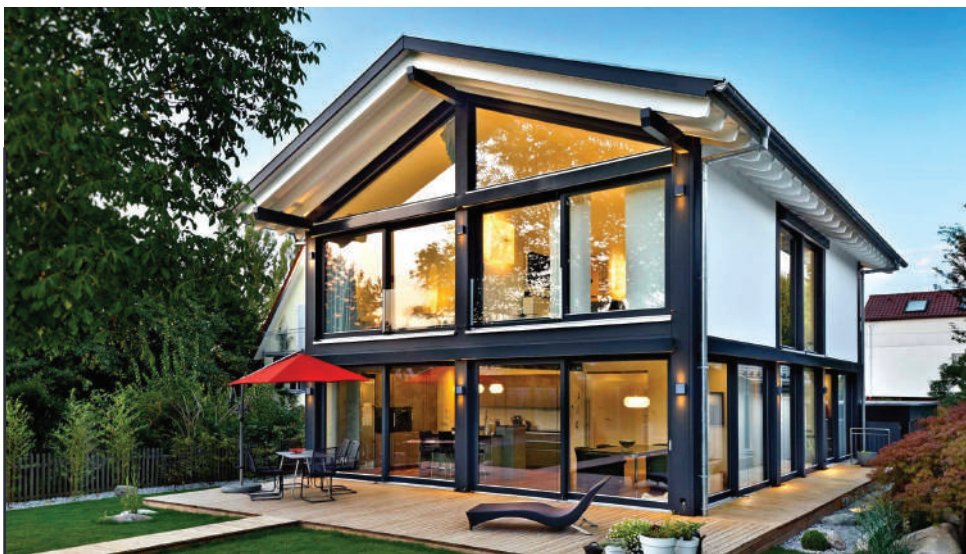
This opening roof system not only brings a sharp, contemporary look but also includes a 185mm extra-wide gutter on all four sides as a standard feature, ensuring efficient water drainage and superior functionality.



Door and windows

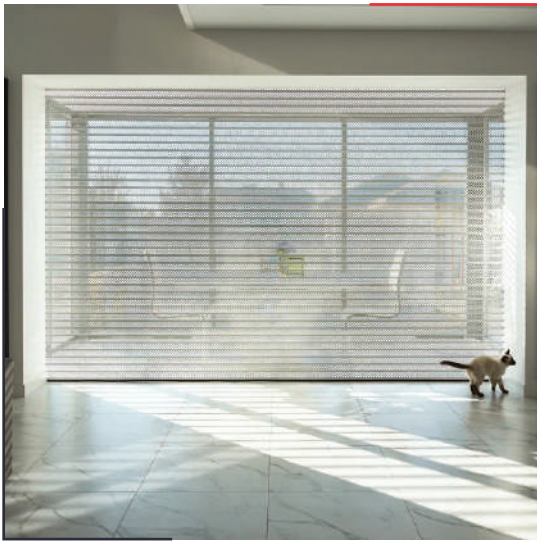
We have a full service like competent installation and are one of the leading manufacturers and suppliers of Aluminum doors and windows have become one of the most common options for homeowners and architects of all sorts of buildings because they offer various advantages and their value for money.

The different aluminum profiles and systems also provide a great deal for designers and innovative architects, such as sliding windows, fixed panel windows, projected fenced windows, arched or round windows, double glazed fenced windows, cottage pane fencing and other custom designs (thermal and non-thermal brake systems).



Other Products

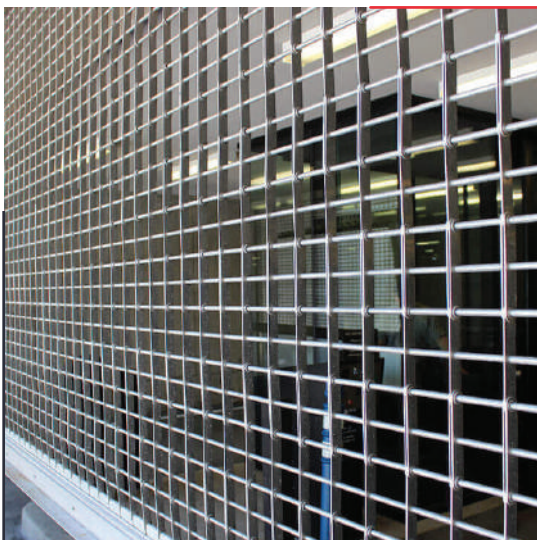
We have a diverse range of rolling shutter solutions to meet various needs, including Premium Full Flat Galvalume Perforated RS, Aluminium Window RS, Polycarbonate RS, Stainless Steel Grill RS, and Aluminium Roof Top Rolling Shutters designed for sun protection. Each option is crafted for durability and functionality, offering customizable features such as bespoke sizing, a variety of color choices, premium powder coating for a superior finish, and smart control technology. These features ensure a seamless blend of style, security, and convenience for any setting.



Premium Full Flat Galvalume Perforated Rs



Aluminium Window Rs



Stainless Steel Grill Rs



Aluminium Roof Top Rolling Shutters
For Sun Protection



Choice of colours

Premium exterior oven baked powder coated finish with 40-50 microns thickness, color as per customer choice.



White



Brown



Beige



Green



Blue



Claret



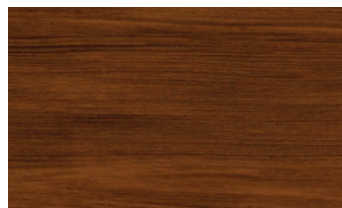
Silver



Gray



Unpainted (galvanized)



Dark walnut



Golden Oak



Our Clients





GET IN TOUCH

Main Branch: Musaffah, M-40 - Abu Dhabi- UAE
Other Branch: Sajayya - Sharjah, UAE

P : +971 50 308 4413

P : +971 56 181 7135

E : sales@tenthouseuae.com

w : www.tenthouseuae.com

