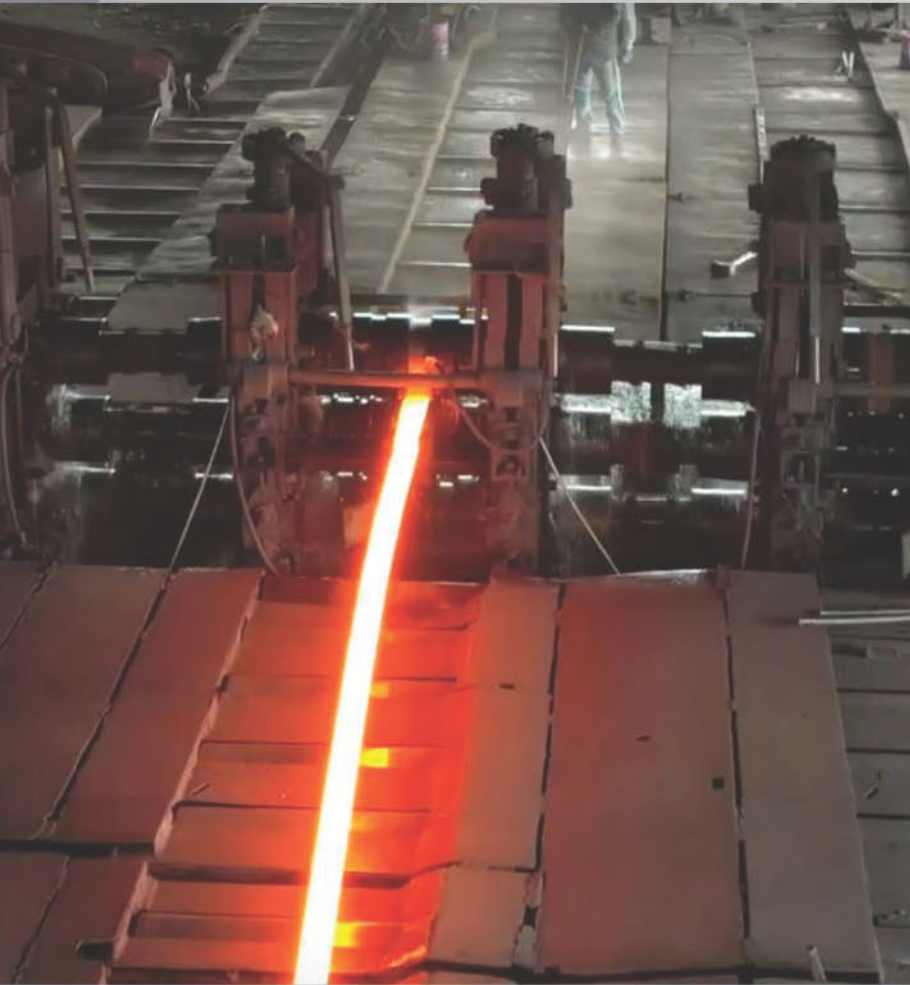




STELLANOX
— STEEL —

A Legacy of Strength, Building the Future.



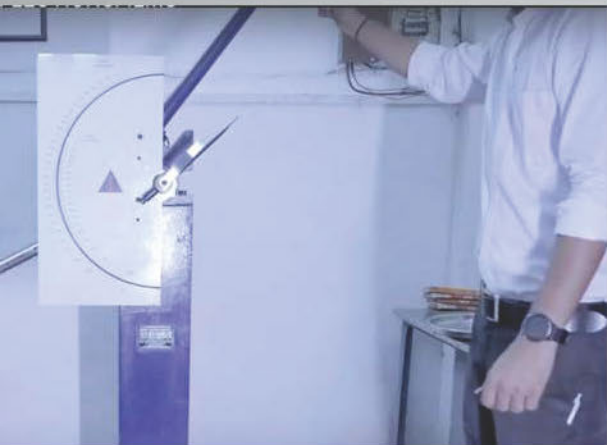
Company Overview

With over two decades of experience in the steel manufacturing industry, **Bhansali Bright Bar** and **Steel Icon Stainless Pvt. Ltd.** have established themselves as trusted names in India's steel sector. Known for their commitment to quality, precision, and reliability, both companies have played a vital role in supplying high-performance steel products across industries.

As part of their continued growth and to serve international clients more efficiently, **Steel Icon Stainless Pvt. Ltd.**, an India-based company, has expanded its footprint by launching a dedicated branch in the UAE under the name **StellanoX Steel**. This strategic move allows us to bring the strength of Indian manufacturing directly to the fast-growing market of the Middle East.

Together as a group, we have built strong supply chains and long-standing industry relationships. Our reach extends beyond India, and with **StellanoX Steel**, we aim to provide seamless access to high-quality steel products to our clients in the UAE and beyond.

Through **Bhansali Bright Bar**, we are also proud to be an authorized dealer for some of the most respected names in the industry, including **Viraj, Jindal, Mukand, Laxcon,** and **Ambica**. These associations help us deliver top-tier products backed by trusted brands



MISSION

At StellanoX Steel, our mission is simple — to deliver good-quality steel and dependable service that our customers can count on. We're here to make sure our products meet real needs, arrive on time, and help our clients get the job done right. We believe in honest work, strong relationships, and always doing our best, every step of the way.

VISION

Our vision is to grow into a brand people trust — not just in the UAE, but across the world. We want to be the steel supplier businesses turn to when they need quality, consistency, and support they can rely on. For us, it's about building more than just steel — it's about building trust, progress, and lasting partnerships.

OUR CORE COMMITMENTS

✓ Uncompromising Quality

All our products go through rigorous quality checks to ensure maximum strength, performance, and durability.

✓ Reliable Delivery

Timely and consistent delivery is part of our promise, backed by a responsive service team and a dependable supply chain.

✓ Tailored Solutions

We offer customisable steel products to suit your exact specifications, ensuring project efficiency and flexibility.

✓ Sustainable Practices

We integrate eco-conscious methods in our production, promoting a cleaner, greener, and more responsible steel industry.

HEX BAR

Quality : Our stainless steel hex bars are manufactured with high precision and superior finishing. They are known for their excellent strength, durability, and corrosion resistance.

Size : 6mm to 100mm across flats (AF).

Supply Condition : Bright drawn, annealed, pickled, centre-less ground.

Application : Used for fasteners, valves, shafts, precision components, and general machining parts across industries like marine, oil & gas, and manufacturing.



Grades Available :

304	304L	316	316L	303	310	410
-----	------	-----	------	-----	-----	-----

Weight calculator :

Per Meter (kg) : $AF (mm)^2 \times 0.0068$
 $0.0068AF (mm)^2 \times 0.0068$

Per Foot (kg) ; $AF (mm)^2 \times 0.00207$
 $0.00207AF (mm)^2 \times 0.00207$ (AF = Across Flats)

SQUARE BAR

Quality : These bars offer a high level of machinability, uniform surface finish, and strength. Ideal for precision applications and structural use.

Size : 6mm to 150mm square.

Supply Condition : Hot rolled, annealed, bright drawn, straightened.

Application : Used in construction, decorative works, machine components, support frames, and general engineering.



Grades Available :

304	304L	316	316L	410	416	431
-----	------	-----	------	-----	-----	-----

Weight calculator :

Per Meter (kg) : $AF (mm)^2 \times 0.0068$
 $0.0068AF (mm)^2 \times 0.0068$

Per Foot (kg) ; $AF (mm)^2 \times 0.00207$
 $0.00207AF (mm)^2 \times 0.00207$ (AF = Across Flats)

ROUND BAR

Quality : Known for dimensional accuracy and corrosion resistance, our round bars offer consistent mechanical properties throughout.

Size : 3mm to 200mm diameter.

Supply Condition : Annealed, bright drawn, peeled, polished, pickled.

Application : Used in shafts, tools, pins, fasteners, structural supports, and heat exchangers in various sectors like oil & gas, pharma, and aerospace.



Grades Available :

304	304L	316	316L	310	321	347	410	420	904L
-----	------	-----	------	-----	-----	-----	-----	-----	------

Weight calculator :

Weight per Meter (Kg/m): Dia (mm) x Dia (mm) X 0.006165 =

Weight (Kg/m)

Weight per Foot (Kg/ft) : Dia (mm) x Dia (mm) x 0.00188 =

Weight (Kg/ft)(mm) ² x 0.00207 \text{AF (mm)}^2 \times 0.00207AF

FLAT BAR

Quality : Our flat bars feature uniform thickness, clean edges, and rust-resistant properties suitable for structural and aesthetic uses.

Size : Width : 10mm to 150mm, Thickness: 3mm to 25mm.

Supply Condition : Hot rolled, cold drawn, annealed.

Application : Used in gates, railings, brackets, fabrication, and heavy machinery.

Grades Available :

304	316	202
-----	-----	-----



Weight calculator :

Weight (Kg/m): Width (mm) x Thickness (mm) x 1000 x 0.00000793

ANGLES

Quality : Stainless steel angles are strong, corrosion-resistant, and ideal for structural support and frame construction.

Size : 20mm x 20mm to 100mm x 100mm, thickness 3mm to 12mm

Supply Condition : Hot rolled, pickled, annealed.

Application : Used in frameworks, brackets, construction reinforcements, shelving, and fencing.

Grades Available :

304	316	202	410
-----	-----	-----	-----

Weight calculator :

Weight per Meter (Kg) : Base Width (mm)×Height (mm)×Thickness (mm)×0.00000793



CHANNEL

Quality : High-strength stainless steel channels with corrosion resistance, easy weldability, and load-bearing capacity.

Size : UPN/UPE sizes from 50mm to 300mm

Supply Condition : Hot rolled, annealed, straightened.

Application : Used in structural support, industrial racks, automotive frames, and machinery.

Grades Available :

304	316	202
-----	-----	-----

Weight calculator :

Weight (Kg/m): [2×Flange Width (mm)×Thickness (mm)+Web Height (mm)×Thickness (mm)]×0.00000793



SS PIPE

Quality : Precision-engineered stainless steel pipes for excellent flow, strength, and corrosion resistance in tough environments.

Size : ½" to 24" NB, custom lengths and thicknesses.

Supply Condition : Seamless, ERW, welded, annealed, polished.

Application : Used in plumbing, petrochemicals, water supply, oil & gas, and structural applications.

Grades Available :

304	316	310	321	347	904L
-----	-----	-----	-----	-----	------

Weight calculator :

Weight (Kg/m) : (Outer Diameter (mm)–Wall Thickness (mm)) ×
Wall Thickness (mm) × Outer Diameter (mm)×0.00002466



SPECIAL ALLOYS

Quality : Manufactured to meet international standards with strict quality control for high performance and durability.

Size : Bars : 5 mm to 300 mm diameter

Sheets/Plates : 0.5 mm to 100 mm

Thickness : Pipes: ½" NB to 24" NB

Custom sizes available on request

Supply Condition : Supplied in annealed, solution-treated, or quenched & tempered conditions based on application requirements.

Application : Used in aerospace, marine, oil & gas, petrochemical, power generation, and chemical processing industries.

Grades Available :

Inconel	Monel	Hastelloy	Titanium	Duplex & Super Duplex
600	400	C22	Gr.2	
625	K500	C276	Gr.5	
718				

Weight calculator :

Weight per Sheet (Kg) = $(\pi \times D^2 \times L \times \rho) / 4,000,000$

Where: D = Diameter (mm), L = Length (mm), ρ = Density (g/cm³)



SS PLATE

Quality : Plates offer strength, corrosion resistance, and uniform flatness, suitable for heavy-duty and structural applications.

Size : 6mm to 100mm thickness, custom sizes available.

Supply Condition : Hot rolled, pickled, annealed.

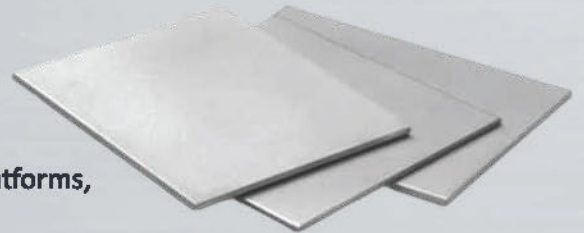
Application : Used in shipbuilding, pressure vessels, industrial platforms, and fabrication.

Grades Available :

304	310	316	321	410	430	904L
-----	-----	-----	-----	-----	-----	------

Weight calculator :

Weight per Plate (Kg) = Length (mm) × Width (mm) × Thickness (mm) × 0.00000793



STEEL STRIPS / SLITTING COIL

Quality : Our steel strips and slitting coils are produced with precision slitting technology to ensure uniform width, smooth edges, and excellent surface finish.

Size : Width : 10mm to 1250mm Thickness : 0.1mm to 4mm

Supply Condition : Cold Rolled (CR), Hot Rolled (HR), Annealed, Pickled, Polished, and Slit coils.

Application : Commonly used in automotive components, electrical panels, clamps, cable trays, cutlery, hardware, and rolled forming applications.

Grades Available :

201	202	304	316	409	430
-----	-----	-----	-----	-----	-----

Weight calculator :

Weight (kg) = Width (mm) x Thickness (mm) x Length (mm) x Density / 1,000,000 or for coils : Weight (kg) = (OD² - ID²) x TT x Thickness x Density / (4 x 1,000,000) OD = Outer Diameter (mm) ID = Inner Diameter (mm) Thickness (mm)



SS COIL

Quality : Our Stainless steel coils come with superior surface finish, strength, and formability. They are suitable for a wide range of industrial applications.

Size : Width : 10mm to 1500mm, Thickness : 0.1mm to 6 mm.

Supply Condition : Cold rolled (CR), hot rolled (HR), slitted coils, polished.

Application : Used in kitchenware, tubing, appliances, roofing, and automotive parts.

Grades Available :

304	316	201	202	409	410	430
-----	-----	-----	-----	-----	-----	-----

Weight calculator :

Weight per Coil (Kg): Width (mm) × Thickness (mm) × Length (mm) × 0.00000793



SS SHEET

Quality : High-strength stainless steel channels with corrosion resistance, easy weldability, and load-bearing capacity.

Size : 0.3mm to 6mm thickness, width up to 1500mm

Supply Condition : 2B finish, mirror finish, matte, No.4, No.8, hot rolled, cold rolled.

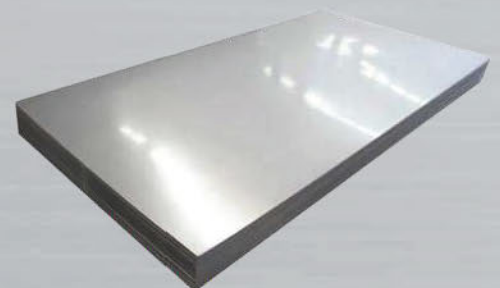
Application : Used in kitchen equipment, elevators, wall panels, construction interiors, and storage tanks.

Grades Available :

304	310	316	202	409	430
-----	-----	-----	-----	-----	-----

Weight calculator :

Weight (Kg/m): [2×Flange Width (mm)×Thickness (mm)+Web Height (mm)×Thickness (mm)]×0.00000793



PIPE FITTINGS

Quality : Highly durable, pressure-tested fittings offering perfect connections and leak-proof operations.

Size : ½" to 12" NB.

Supply Condition : Butt-welded, socket-welded, forged, threaded.

Application : Used in piping systems for fluid transport, refineries, chemical industries, and infrastructure projects.

Grades Available :

304	316	321
-----	-----	-----



Weight calculator :

Weight (Kg) for SS Pipe Fittings : $\text{Weight (Kg)} = \text{Outer Diameter (mm)} \times \text{Wall Thickness (mm)} \times \text{Fitting Length (mm)} \times 0.00002466$

FERRULE FITTINGS

Quality : Precision-designed ferrule fittings that provide leak-proof tube connections with high pressure and vibration resistance.

☑

Size : 1/16" to 2" OD tubing.

Supply Condition : Polished, passivated, single/double ferrule types.

Application : Used in instrumentation lines, oil & gas, pharma, and high-purity applications.

Grades Available :

304	316
-----	-----



Weight calculator :

Weight (Kg) for SS Ferrule Fittings : $\text{Weight (Kg)} = \text{Outer Diameter (mm)} \times \text{Wall Thickness (mm)} \times \text{Fitting Length (mm)} \times 0.00002466$

INSTRUMENT FITTINGS

Quality : Instrumental fittings are precision-engineered to provide leak-proof connections in critical systems.

Size : 1/16" to 2" (Custom sizes and metric options available).

Supply Condition : Threaded, compression type, polished, machined, burr-free.

Application : Used in piping systems for fluid transport, refineries, chemical industries, and infrastructure projects.

Grades Available :

304	316	316L
-----	-----	------



Weight calculator :

Weight (kg) = Volume (mm³) × Density / 1,000,000
Volume is calculated based on shape (mostly cylindrical)
Density of Stainless Steel ≈ 7,850 kg/m³
Best weight estimation through CAD or supplier charts for each fitting type.

TIG WIRE

Quality : Produced with clean surface finish and consistent wire diameter for precision welding. TIG wires ensure stable arc and low spatter.

Size : 1.6mm, 2.0mm, 2.4mm (custom sizes available).

Supply Condition : Bright finish, spooled or cut lengths.

Application : Used in high-quality welding for piping systems, pressure vessels, food industry equipment, and automotive repairs.

Grades Available :

304L	308L	309L	310L	316L	347
------	------	------	------	------	-----



Weight calculator :

Weight per Meter (Kg/m): Dia (mm) × Dia (mm) × 0.006165 =
Weight (Kg/m)

Weight per Foot (Kg/ft): Dia (mm) × Dia (mm) × 0.00188 =
Weight (Kg/ft)

FORGED FITTING

Quality : Durable fittings designed for high-pressure applications with strong, leak-proof performance.

Size : 1/8" to 4" NB (2000 / 3000 / 6000 / 9000 Class).

Supply Condition : Threaded, socket weld, butt weld.

Application : Used in oil & gas, chemical, marine, and power industries. These include elbows, tees, couplings, etc.

Grades Available :

304	316	316L
-----	-----	------



Weight calculator :

No single formula applies for all, but for cylindrical fittings: Basic Estimation Formula for Cylindrical Fittings: $Weight (kg) = \pi \times (D^2 - d^2) / 4 \times L \times Density / 1,000,000$ $D = Outer\ diameter\ (mm)$ $Density \approx 7,850\ kg/m^3$ (Stainless Steel) For elbows, tees, and other shapes, use standard weight charts or 3D modeling.

FLANGES

Quality : Manufactured to international standards, our flanges offer secure and pressure-rated connections for pipe systems.

Size : 1/2" to 24", Class 150 to 2500.

Supply Condition : Forged, machined, annealed, pickled.

Application : Used in pipelines, refineries, power plants, and chemical plants.

Grades Available :

304	316	321	904L
-----	-----	-----	------



Weight calculator :

Weight per Meter (Kg/m) : $Dia\ (mm) \times Dia\ (mm) \times 0.006165 = Weight\ (Kg/m)$

Weight per Foot (Kg/ft) : $Dia\ (mm) \times Dia\ (mm) \times 0.00188 = Weight\ (Kg/ft)$

FASTENERS

Quality : Corrosion-resistant and durable fasteners with accurate threading for industrial-grade assemblies and fixtures.

Size : M6 to M100, custom sizes.

Supply Condition : Cold forged, threaded, coated, polished.

Application : Used in construction, machinery, marine, and heavy-duty bolting systems.

Grades Available :

304	316	321
-----	-----	-----



Weight calculator :

Weight (Kg) for SS Pipe Fittings : $\text{Weight (Kg)} = \text{Outer Diameter (mm)} \times \text{Wall Thickness (mm)} \times \text{Fitting Length (mm)} \times 0.00002466$

MANIFOLDS

Quality : Precision-engineered for accurate flow control and leak-free operation in instrumentation systems.

Size : ¼" to 1" (2-way, 3-way, 5-way configurations).

Supply Condition : Threaded, flanged, welded.

Application : Ideal for pressure gauges, transmitters, and flow control in oil & gas, power, and process industries.

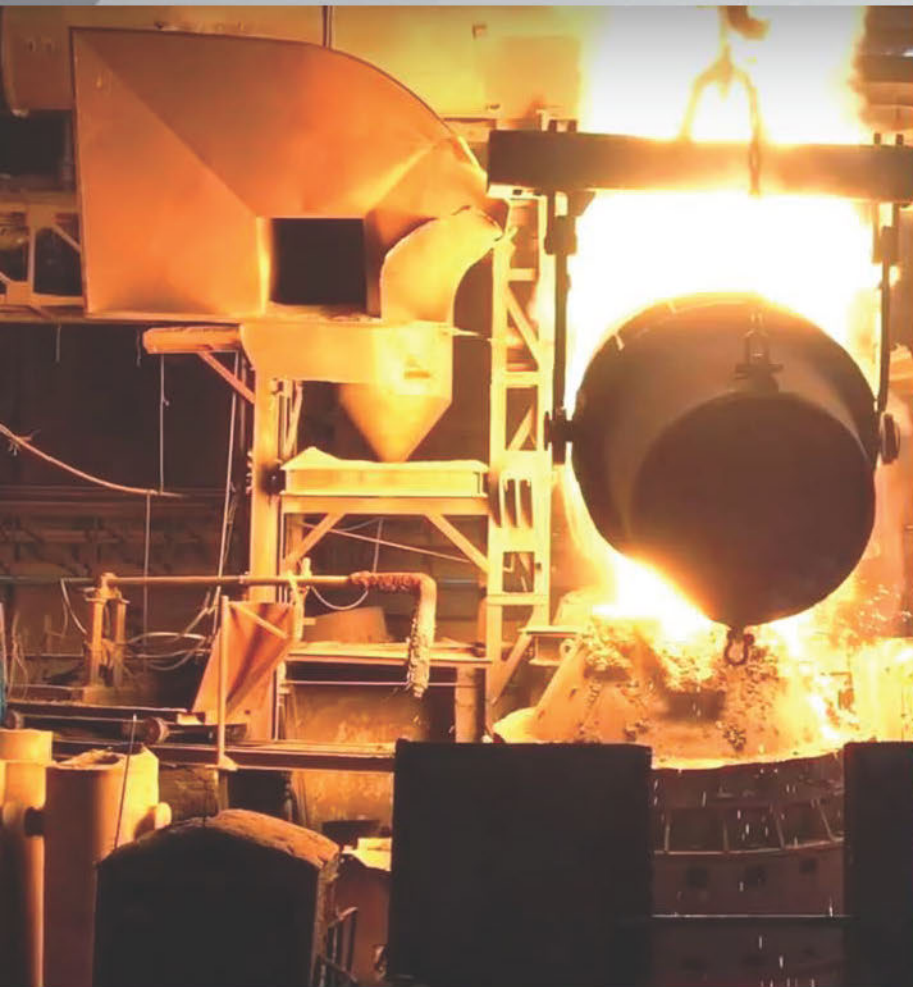
Grades Available :

304	316	316L
-----	-----	------



Weight calculator :

Weight (kg) = $L \times W \times H \times \text{Density} / 1,000,000$ Density of Stainless Steel $\approx 7,850 \text{ kg/m}^3$



Over 25 Years of Steel Industry Expertise

Over 25 Years of Steel Industry Expertise With a legacy built over two decades, Bhansali Bright Bar and Steel Icon Stainless Pvt. Ltd. have been at the forefront of precision steel manufacturing in India. Now, with the launch of StellanoX Steel in the UAE, we're bringing our proven expertise and trusted supply network to the Middle East. Our commitment to quality, partnerships with top steel brands, and a focus on global standards drive everything we do.



2000+ Projects Successfully

25+ Years of Industry

100+ Clients Served Across



Groups of Companies

At StellanoX Steel, we're always ready to support your project needs with prompt service, expert guidance, and reliable steel solutions. Whether you're looking for product inquiries, bulk orders, or general information — we'd love to hear from you.



**Steel Icon
Stainless Pvt Ltd.**
<https://steeliconstainless.com/>



Steel Inox Pvt Ltd.
<https://steelinoxpl.com/>



**Bhansali Bright
Bars Pvt Ltd.**
<http://www.bhansalibrightbars.com>



Steel Wire India
<https://steelwireindia.com/>

INDUSTRIES WE SERVE

Aerospace



Chemical Processing



Marine Engineering



Oil & Gas



Construction



Medical Equipment



Sugar Industry



Power Generation



CORPORATE OFFICE

📍 307, Office No. 8, 3rd Floor
Breeze Business Centre, Hamsah Tower - A
Karama, Dubai - United Arab Emirates

CONTACT NUMBERS

☎ +971 52 52 54169
☎ +971 55 13 60601

EMAIL

✉ Sales Inquiries : sales@stellanoxsteel.com
✉ General Info: info@stellanoxsteel.com

WEBSITE

🌐 www.stellanoxsteel.com