



Station Satcom, is being recognised as the most preferred supplier of satellite communication services the region offering technical support par excellence, through our constant devoted efforts of exemplary technical proficiency and an unequalled passion for customer delight.

" We are the distribution partner of Inmarsat which is the highest level a satellite service provider can get with Inmarsat.."

www.stationsatcom.com



Our Solutions

Global Marine VSAT

FleetBroadband (FBB)

FleetPhone/ Fleet One

BSNL IsatPhone 2 / BGAN

24/7 Navcom Remote Support

Repairs / Service of all Equipments

Citadel - Safe Room Solutions

Inmarsat C (GMDSS) / SSAS / LRIT /
AAIC Services

CCTV and Video Chat

S-AIS Tracking / Weather Routing

4G/5G/LTE - Global GSM Service

Email / Antivirus / Cyber-Security
Solutions

Onboard Entertainment - Sat TV

Crew Calling cards

Lowest Satellite Calling Rates

Station Satcom Crew WiFi

On-Board IT and Installations

New n Refurbished Equipments

Iridium

G2X Land

Vessel IT Solutions

HAMS IT Solutions

www.stationsatcom.com

About Us

Station Satcom is India's leading Satellite communications service provider offering a variety of remote area communications solutions for offices and operations across the world.

Since 1998, Station Satcom has been providing steadfast, critical and timely services that are tailor-made to suit a range of businesses. Station Satcom has carved a niche for itself by epitomizing reliability and responsibility.

We, at Station Satcom, aim deliver optimal and consistent services to ensure total customer satisfaction. Our dedicated team of personnel is committed to understanding every need of the customer and delivering quality support and assistance.

Station Satcom aspire to blend our satellite communication technology impeccably into your system so as to provide you with nothing but the finest solutions, services and technical support for all your remote area activities; ensuring absolute customer delight with our dependability and our sense of responsibility.

Mission

In our continuing endeavor to provide world class quality services to our customers, we aspire to blend our satellite communication technology impeccably into the customer's system to provide the finest solutions, services and technical Support for all remote area activities; ensuring absolute customer delight and meet our customers' most challenging connectivity issues with ingenuity and passion.

Vision

We at Station Satcom, envision our company to be the most preferred supplier of satellite communication services and offer technical support par excellence, through our constant devoted efforts, exemplary technical proficiency and an unequalled passion for customer delight



Why Choose Station Satcom?

Customer Oriented: We are bound only by the mission of addressing our customers' most vital needs in a way uniquely suited to them and aligning solutions that are compatible with the customer's requirement

24/7 Technical Support: Running our support desks 24 hours a day, 7 days a week, 365 days a year, by a team of diligent and competent personnels. Understanding our clients and customers and delivering the best of service standards are of our top priority.

Advanced Billing System: We use an advanced billing system that enables customers to log in to the customer portal, where they can retrieve their invoices, keep track of their satellite traffic in real time, configure traffic monitors, and manage their own services.

Global Installation & Repair Network: We provide Prompt and high quality installation and repair services and are persistent to provide the smartest, most robust connectivity, anywhere

Commitment To Excellence: We are constantly keeping up with new products and creating innovative services for our valued users, while continuing to maintain a high standard in support and service delivery.

FleetBroadband (FBB)

FleetBroadband is the market leading maritime communications service providing reliable, cost-effective global broadband data and voice, simultaneously, through a compact antenna. Delivered globally via the I-4 satellite and ground network, which maintains over 99.9 per cent network availability.

Thousands of vessels of all sizes and in all maritime sectors trust in FleetBroadband for operational communications such as email, phone and applications that help them do everything from plotting the most fuel-efficient route to diagnosing mechanical faults remotely by video link. It boosts morale onboard by enabling crew to stay in touch with family and friends, use social media, and watch news and entertainment.



BSNL Isatphone 2

The new-generation IsatPhone 2 joins IsatPhone Pro in our handheld satellite phone portfolio, bringing more choice to customers wanting the reliability delivers.

IsatPhone 2 is a tough phone for a tough world. The robust handset has been engineered to cope with anything that nature can throw at it, from searing heat to icy blasts, desert sandstorms or monsoon rain. It offers unrivalled battery life. Together, IsatPhone 2's design and capabilities - including safety features - make it ideal for the most demanding of users in sectors such as civil government, oil and gas, NGOs, and media.



VSAT Services

Fleet Xpress

Fleet Xpress opens up new levels of connectivity and exceptional performance across the world's oceans. Delivering greater bandwidth, seamless mobility and outstanding reliability, wherever you operate in the world. Every Fleet Xpress shipboard solution utilises both a Global Xpress Ka-band and a FleetBroadband L-band terminal, delivering high data speeds in a reliable managed service, controlled by an onboard Network Service Device (NSD).

Purposely designed for mobility, Fleet Xpress provides a continuous, consistent service as traffic is handed seamlessly across each spot beam and between satellites around the world. Fleet Xpress offers a powerful combination of unique benefits to set a new standard in maritime communications.

- Continuous Connectivity
- Guaranteed Performance
- Controlled Costs
- Fully Managed Support

KVH TracPhone

Easy. Affordable. Everything you Need.

AgilePlans by KVH brings you mini-VSAT Broadband hardware and airtime, STCW-related basic training for your crew, operations data updates, news and entertainment for crew welfare, zero maintenance costs, free standard installation, and global technical support - all delivered to your fleet worldwide, with no ownership costs or capital investment.



Inmarsat C

Inmarsat C provides two-way data and messaging communication services to and from virtually anywhere in the world. The low-cost terminals and antennas are small enough to be fitted to any size of ship. Inmarsat C shows power of ISATphone

- Value Ads
- Distress Alerting
- Enhanced Group Call
- Inmarsat C Data Reporting and Polling Services



Iridium

Iridium Certus® - Iridium Certus is a truly global L-band satellite service capable of up to 704 Kbps of bandwidth across aviation, maritime, land mobile, government, and IoT applications.

Iridium GMDSS - Enhances your safety at sea, offering reliable coverage over a unique constellation of 66 cross-linked satellites in Low-Earth Orbit.



AAIC- Accounting Authority Services

Having one or more vessels sail the seas with radio or Inmarsat satellite communications onboard means that operators in various countries will charge you for the communications costs from your vessels to shore. Choose Accounting Authority to alleviate your sorting through these costs. With this account, you receive invoices in one currency and we take care of paying the various operators for you.

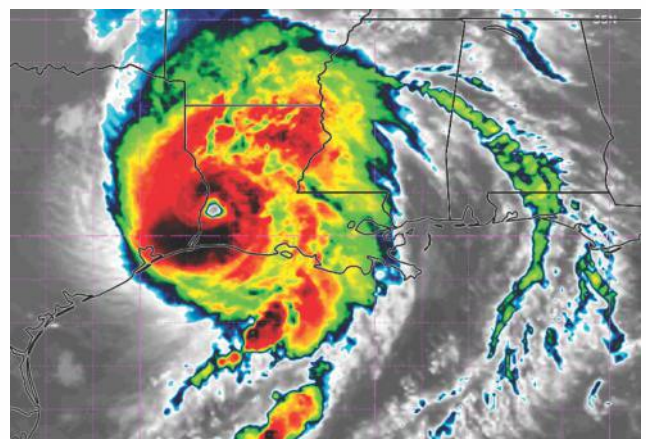
Station Satcom along with Inmarsat is also an authorized Point of Service Activation center to activate all your Inmarsat satellite services (B, C, M, mini-M, Fleet and FleetBroadband) for multiple countries. So, choosing us as your Point of Service Activation and your Accounting Authority means you only need to make one call - and we will handle it all!



Weather Routing

Ship Performance Optimisation System (SPOS) Onboard is the world's leading onboard weather routing system. With SPOS Onboard the ship's route can be optimised, taking into account sea conditions such as wind, waves and swell, current and other weather elements.

SPOS has proven to be the most accurate and reliable weather routing system in the world with timely updates ensuring that the crew is always aware of their surroundings and the weather forecast.



Marine GSM Signal Booster

The GSM signal booster gives high speed equivalent broadband speeds of up to 100Mbps up to 20 miles offshore via 4G, 3G and 2G networks. 1 Both units create a WiFi hotspot onboard and also have Ethernet ports to support a wired network. It has added features of Marina WiFi Repeater mode and flexibility of two SIM card slots that can be configured as primary and back up options.

It utilises 3G and 4G data networks, optimizing access to coastal, land based networks and helps extend the range and usability to the maximum distance providing an internet connection from your boat to shore. Onboard it creates a WiFi hotspot allowing you to connect multiple devices or wired access via its Ethernet port.



TracPhone® LTE-1

LTE that goes the distance
Double the coverage and 10X faster service at sea

SSAS - Ship Security Alert Systems

Standalone SSAS

SSAS is a 'PREMIUM' dedicated SOLAS X1.2.6 type approved standalone system that operates on the new INMARSAT IsatDataPro (IDP) satellite network. Designed to exceed regulations with the addition of an internal backup battery module, on board test functions, up to two separate alert zones and GPS jamming notification.

New installations come inclusive of all cabling and alert button requirements. If upgrading from legacy D+ SSAS systems, operators can take advantage of utilising existing SSAS cable runs, reducing upgrade or consolidation deployment and avoiding any technician charges.



Cyber Security

We are committed to help our clients better defend the enterprise. 6 Level Cyber Risk Management approach maritime

- **IDENTIFY THREATS:** Understand External & Internal Cyber Security threats posed by inappropriate use and poor cyber security practice
- **IDENTITY VULNERABILITIES:** Develop inventories on board. Understand consequence of a cyber security threat on them. Understand capabilities & limitations of existing protection measure
- **ASSESS RISK EXPOSURE:** Determine the likelihood of - 1) vulnerabilities being exploited. 2) vulnerabilities being exposed by inappropriate use 3) Determine the security & safety of crew and vessel.
- **DEVELOP PROTECT & DETECT CAPABILITIES:** Reduce likelihood of vulnerabilities being exploited Reduce potential impact of a vulnerability being exploited
- **ESTABLISH RESPONSE PLAN:** Develop contingency plans to effectively respond to identified cyber risks
- **RESPOND & RECOVER:** Respond to and recover from cyber security incidents using an Incident Response Plan Assess the impact of effectiveness of the response plan and re-assess threats and vulnerabilities.

Our Security R&D team applies advanced threat detection techniques in our C!b3RLab(R)

Antivirus

The heightened threat of targeted cyber attacks is prompting the Maritime sector to look for ways to improve network security. Perpetrators continue to devise new ways to exploit the vulnerabilities of your network; protecting critical infrastructures has become a crucial part of business requirements. Many of the biggest virus threats come from local sources.



ECDIS

ECDIS is a computer-based navigation information system compliant with latest International Maritime Organization (IMO) regulations and can be used as an alternative to paper nautical charts. An ECDIS system displays the information from electronic navigational charts (ENC) and integrates position information from the Global Navigation Satellite System (GNSS), gyrocompass, speed log, other navigational sensors, radar and automatic identification systems (AIS).

We deliver a full range of type-approved ECDIS solutions that can be stand-alone or part of the Integrated Navigation Systems or Multifunctional Display i.e. Radar, Conning, Bridge Alarm Management, Track Control in one workstation. ECDIS provides easy and unique possibilities for customization.



Tracking

The Long-Range Identification and Tracking (LRIT) system provides for the global identification and tracking of ships.

The LRIT system consists of the shipborne LRIT information transmitting equipment, the Communication Service Provider(s), the Application Service Provider(s), the LRIT Data Centre(s), including any related Vessel Monitoring System(s), the LRIT Data Distribution Plan and the International LRIT Data Exchange. It is the responsibility of the ship owner to have LRIT in place.



BGAN

Our BGAN service provides simultaneous voice and broadband data communications globally from small and lightweight satellite terminals. Connect your BGAN terminal to a portable PC or smart device using Standard IP to access the internet for applications such as web browsing and email, or choose from a range of guaranteed Streaming IP rates to meet all your data, voice and video needs. BGAN is accessible via a range of small, lightweight satellite terminals, which provide performance options to suit different operational needs. The smallest terminals are designed to suit single users.



Fleet One

Connectivity For Smaller Boats

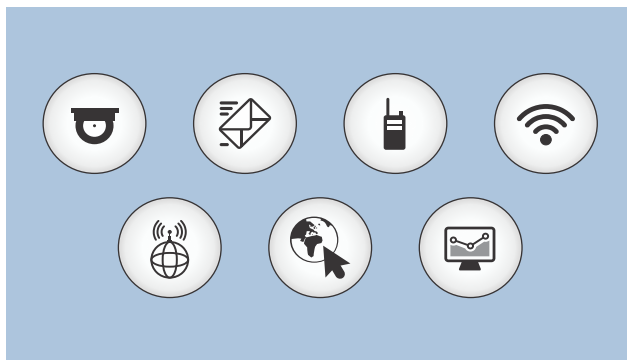
Fleet One is specifically designed to meet the low data usage demands of occasional or seasonal users when they move out of VHF or GSM coverage areas. We offer two service plans to put satellite broadband in the reach of any size of commercial or leisure vessel. Fleet One brings to the maritime communications world unparalleled advantages in cost performance and ease of use. While at sea, Fleet One will be your indispensable partner for all of your business or leisure communications needs. Based on Inmarsat's dependable, global I-4 satellite network, Fleet One makes it easy to talk, text, and send and receive emails at sea. Fleet One offers one voice line and data up to 100kbps - ideal for accessing full-colour weather images, navigational charts and routing information, as well as sending reports and browsing the web.



Internet Management system

Crew calling service (PINs, registered users or both) - This is a chat card service whereby instead of users accessing a shore based platform for crew voice calls, they are using pins that access Infinity to authenticate and operate. Units are decremented and once fully used they expire.

Crew internet service (PINs, registered users or both) - This is a typical internet application whereby users enter a pin number and password, to have access to the internet. They can connect to Infinity either by cable or through a local wireless hub (if available). Upon opening a web browser on their personal laptops or on a shared PC onboard, users are asked for identification. If successful, they are given an allowance in denominations of 25, 50 or 100 Mbytes which can then be used at will during multiple sessions until expired. Different denominations are also available upon request, or alternatively, PINs can have a time-based denomination and operate only within specific time frames.



Crew Calling Prepaid Services

ChatCard is an easy-to-use, prepaid calling card that allows crew members to stay in touch with family and friends. It boosts morale, helps lower turnover and is cost effective. Saying goodbye is never easy. But now crew can easily keep in touch with loved ones using Xantic's ChatCard Reload, an industry-first service enabling calling cards to be reloaded via the web.



Remote Support / NAVCOM

Connect Remotely. Save time and money.

We support remote customers quickly through web-based, on-demand remote support sessions. Our remote monitoring, diagnostics and maintenance improve the reliability of vital installations. This way you can avoid unplanned maintenance, minimize service cost and eventually reduce your total cost of operation and save time of your technical superintendent.

We perform systematic inspection, detection, and correction of incipient failures either before they occur or before they develop into major defects. This enables us to perform predictive maintenance, allowing convenient scheduling of corrective maintenance, pre dry docking inspection and preventing unexpected equipment failures. Advanced remote technology enables us to execute routine maintenance, software installations or up grades and operator error identification.



CCTV

Our wireless distribution platform, based on our TVI video-compression technology. It is designed to provide a video-transmission capability, allowing users to access cameras anywhere in the world in real time. The proposed solution provides real-time video streaming from anywhere to anywhere - even over low bandwidth or wireless networks - saving data costs by using 70% less bandwidth than standard technologies.



G2X Land

Global Xpress (GX) is the world's first and only globally available, high speed broadband network, owned and managed by a single operator.

The G2X Land satcom as a service model provides government land customers with seamless, worldwide, multi mbps services whether on the move, on the pause or in a fixed location.

G2X Land is easy to use, with centralised, portal based configuration and over the air management ensuring operator training is minimised and operational flexibility is maximised. G2X Land follows you wherever you go, there's no need to warn your satellite operator in advance.

Benefits:

- This is Satellite capability as a service with access on demand
- Service models to suit your operation, with user selected Committed and Maximum Information Rates (CIR/MIR)
- and contract periods from Occasional Use through to long term subscriptions
- BGAN style ease of operation
- Over The Air terminal configuration Attach to the network in minutes with no in field configuration or files to upload
- High speed Internet IP network connectivity and file / data transfer
- Cyber security best practices
- Complemented by our L band network, with simple integration across BGAN and GX networks for government users on land, in the air and at sea
- Terminals available to provide interoperability with Military Ka band systems
- A range of terminal manufacturer partners to suit your application, environment and budget
- Remote support through our 24x7 Network Operations Centre



Vessel IT Solutions

We provide professional IT services, support and solutions to the Maritime industry. We have dedicated team to support vessel IT 24X7. We provide the complete IT services for the vessels.

Vessel IT Infrastructure: We design vessel network robust and secure IT infrastructure for vessels. From Simple network with few workstations to client server network solutions. We design network requirement for our customers need.

IT Procurement: We provide recommendations and guidance for IT procurement. Also we supply servers, desktops, laptops, network switches, firewall, cabling etc to setup complete onboard networking. Our wide range of local and international vendor network enables us to provide hardware and hardware at competitive rates

Vessel Attendance: Our trained and experienced IT and SATCOM engineers to attend vessels and resolve IT and VSAT issues, installation, configuration, commissioning and troubleshooting.

Cabling: We provide Electrical/Network cabling services onboard. We have team of experienced technical team in cabling work onboard vessels. We provide cable termination, patch panel arrangements, server rack arrangements. We ensure all cables are tested throughout during our commissioning work.

HAMS IT Solutions

Station Satcom provides end to end communication solutions and technical support via its own infrastructure to the global Maritime Industry. HAMS is the first true server cluster and routing solution for the Maritime Industry. HAMS offer all the benefits described below plus the possibility to have your own VM server on the vessel. Features included are as follow:

- Cluster with virtual machine replication
- Utilization of all hardware processors, RAM and SSD
- Multiple WAN failover
- Remote administration
 - a) VM creation
 - b) Restart
 - c) Status
- Incremental crash backup and file recovery
- Data retention incremental with scheduler
- Instant recovery of snapshots
- Automated replication and snapshot backup
- Easy remote maintenance
- Easy convert VMware virtual machines to work on our solution

Overall, the HAMS will enhance the shore to ship and ship to shore communication, eliminate any unnecessary bandwidth consumption and offer you a trouble-free solution for your network requirements.

Connecting the Unconnected – Partners



Think Global, Act Local

Mumbai :
Station Satcom Pvt. Ltd.
801, Madhava, Bandra Kurla Complex,
Mumbai 400 051, India.
Tel.: +91 22 4201 7800
Email: sales.in@stationsatcom.com

Delhi :
Station Satcom Pvt. Ltd.
1104 Antriksh Bhawan,
22 kG Marg,
New Delhi 110001, India.
Tel.: +91 11 4310 2838
Email: sales.in@stationsatcom.com

Chennai :
Station Satcom Pvt. Ltd.
Palani Enclave, No.6/14, F-2, First Floor,
Anna Swamy Street, Pallavaram,
Chennai 600043, Tamil Nadu, India.
Tel.: +91 44 6602 3226
Email: sales.in@stationsatcom.com

Singapore :
Station Satcom Pte. Ltd.
60 Paya Lebar Road, #06-39,
Paya Lebar square,
Singapore 409051.
Tel.: +65 6715 8937
Email: sales.sg@stationsatcom.com

Netherlands :
Station Satcom B.V.
Steekant 40,
2993 DB Barendrecht,
The Netherlands
Tel.: +31 621536850
Email: sales.nl@stationsatcom.com

Dubai :
Station Satcom FZC
Office # A2-034, Saif Zone,
Sharjah - United Arab Emirates.
Tel.: + 971 67676474
Email : sales.uae@stationsatcom.com



24 X 7 Helpline

- India : +91 22 42017844
- Singapore : +65 6708 7444
- Netherlands : +31 108080617
- Indonesia : +62 2129 223044

www.stationsatcom.com