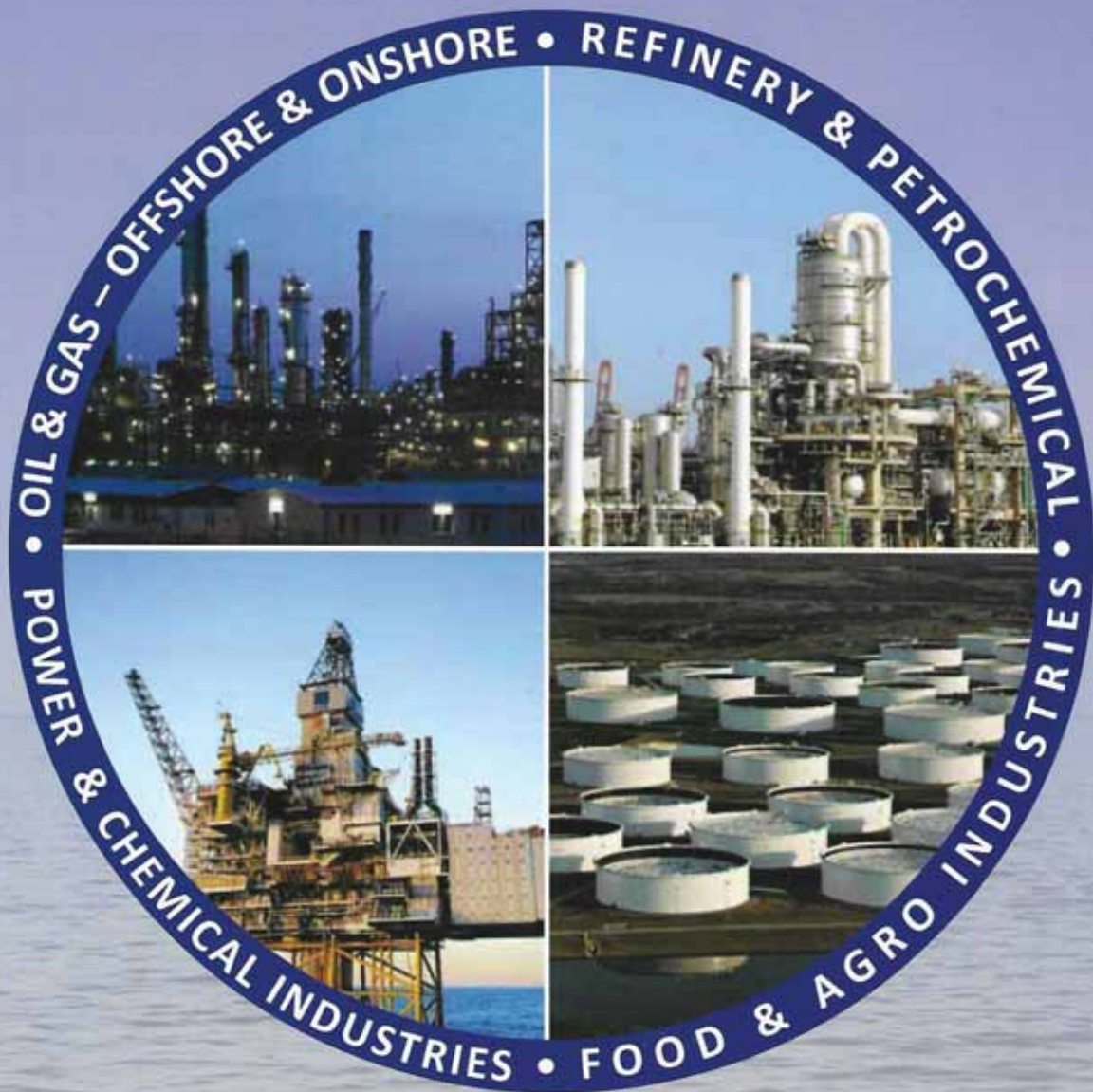




STAR TECHNOFIT



Your Partner in Reliability and Excellence in the Oil & Gas Sector

P.O. Box 51767, Abu Dhabi | T: +971 2 5511 571 | F: +971 2 5511 703



WELCOME FROM THE CHAIRMAN



STAR TECHNOFIT is dynamic, transparent and socially responsible group that is committed to walk the extra miles to fuel the regional economy and improve lives through various business activities. At STAR TECHNOFIT, we have a quest for growth. But growing honorably is our code. We strive to be a regional leader in all our businesses but accurately identifying and managing business opportunities

by establishing strategic alliances through reputable international companies with outstanding track records.

At the same time, we rely on our past experience and core business principles for the strength and courage needed to move forward in this ever changing environment. Today, more than ever we are committed towards building our future through environmentally friendly, state-of-the-art technology and modern management principles.

Last but not least, the strength of STAR TECHNOFIT lies in the support of our clients, Principals and community. We are ever thankful to them for making us what we are today.

H.E. Eng. Salah Salem Bin Omair Al Shamsi

STAR TECHNOFIT TRADING LLC
Chairman

UNIQUELY POSITIONED FOR GROWTH

Our strong NETWORK/CAPITAL structure allows us to take advantage of business opportunities with superior rates of return.

CUTTING EDGE TECHNOLOGY

INNOVATIVE SOLUTIONS FOR UPSTREAM

WATER, POWER & OIL & GAS INDUSTRY

STAR TECHNOFIT TRADING LLC

P.O Box : 51767,
Abu Dhabi, United Arab Emirates
Telephone : +971 2 5511571
Fax : +971 2 5511703
Email : startec@emirates.net.ae
Website : www.startechnofit.com

ASSOCIATE OFFICES:

TECHNOFIT ME FZCO

P.O. Box : 263826,
Jebel Ali Free Zone (South),
Dubai, United Arab Emirates
Telephone : +971 4 8809750
Fax : +971 4 8809250
Email : info@technofitme.com
Website : www.technofitme.com

TECHNOFIT QATAR WLL

P.O. Box 881, Indian Supermarket Building,
Near DHL Office, Old Airport Road,
Doha, State of Qatar
Telephone : +974-44653431/72534/72641
Fax : +974-44659103
Email : techfit@qatar.net.qa

ALFA PIPELINE PRODUCTS LLC

Rumais , Sultanate of Oman
Telephone : +968 24426825/23
Fax : 00968 24426831
Email : info@appoman.com
Website : www.appoman.com

REPRESENTATIVE OFFICE:

Iraq

Egypt

Malaysia

Saudi Arabia

Sudan

SPECIALIZATION

Barred and Barrel Tees
Isolation Joints
Induction Bends
Multi Phase Flow Meters,
Instrumentation tubes and fittings
Mono flange valves
Double Block and Bleed Valves
End Closures
Nozzles and Special Forgings

Flame Arrestors
Pig Launcher & Receiver
Cladding of Flanges and Fittings
Bursting Discs and End Caps
Filtration Equipment
Power Generators
Transformers Rectifiers



COMPANY PROFILE



Star Technofit Trading was established in 2004 with a prerogative goal to provide material and services to ADNOC and its subsidiaries as an Abu Dhabi arm of Technofit Under the Patronage of H.E. Salah Salem Omeir Al Shamsi. We acknowledge throughout the middle east region and in oil & gas industry as the most reliable supplier of pipes, fitting, flanges, valves etc. and other oil filed products.

Currently our integrated stock is over US\$ 50 Million.

This is achieved by our company high standards of Engineering Quality products made readily available in market at the shortest possible time, by reducing the downtime & increasing the production and through co-ordination with quality assurance department of our various principles, thus maintaining high quality / safety / enviromental standards.

Staff employed by the company are technically qualified and dedicated to improve procedure and working ractice to enhance high quality service to the customers. All materials procurement and supply is of international standard specification and is from Shell International approved manufacturers.



VALVES



- Range** : 1/2" to 48" – #150 lb to #2500 lb
Flanged, NPT, SW, BW Connections
- Ball** : Floating & Trunnion Execution, Split Body,
Top Entry, Side Entry, Fully Welded
- Standard** : BS5351, API 6D and API 6A
- Gate, Globe, Check** : Forged & Cast Execution
- Standards** : BS5352, BS1414, BS1873, BS1868
API 6D, API 602
- Butterfly** : Regular & Offset Design. CI & CS Execution
- Standards** : BS5155, API609
- Construction** : Wafer, Semi-lug, Single & Double Flanged
- Materials & Grades** : A105N, WCB, WCC, LF2, LCB, LCC, F316L, F304L, F321, CF8, CF8C, CF8M, F5,
F9, F11, F51, F53, Alloy H25/825, Al Brz 95800/95500, Bronze BG2M / B61
- Specials** : Metal Sealed Valves, Cryogenic Valves, Actuated Valves, Exotic Alloy Valves
- Coating** : Polythene, Epoxy, Cement Lined
- Operation** : Lever, Gear, Hydraulic, Electric Movement, Motor Operated



FITTINGS



Range : 1/2" to 96" Wide Range of Thickness & Specifications

Ends : BW, SW, PE, Threaded

Standard : ANSI/ASME, MSS SP 75

Materials : Carbon Steel, Alloys, Stainless Steel, Duplex, Super Duplex, Inconel, Titanium, Monel, Hastalloy

Grade : WPB, WPL6, WPHY 42/52/60/65/70, 304/304L, 316/316L, UNS S31803, S32205, S32750, S32760, Alloy 625/825, WP11, WP22, WP91, 321/321H, 347/347H, CUNI 90/10

Special : Barred & Barrel Flow Tees, Large Radius Induction Bends, Sweep Bends, Stub Ends, Laterals.



FLANGES



Range : 1/2" to 96" 150# to 2500#, 3000psi to 10,000 psi.

Wide Range of thickness & Spec.

Type : WN, SW, Blind, Threaded, SO.

Standards : API, ASTM/ASME, BS

Materials : Carbon Steel, Alloys, Stainless Steel, Duplex, Super Duplex, Inconel, Titanium, Monel, Hastalloy

Grade : A105, A350 LF2, LF3, LF6, 304/304L, 316/316L, F1, F5, F6, F7, F9, F11, F12, F22, F51, F53, F55, High Yield F42 to F70, Inconel 625/825.

Special : Spectacle Blinds, Drip Rings, Long WN, Nozzle, Insulation Flanges, Anchor Flange Swivel Flange, Misalignment Flange, Drip Ring, Compact Flanges, Tube sheets, Nipoflanges.



PIPES



Range	: 1/2" to 96"
Execution	: Seamless & Welded Pipes, ERW, HFW, SAW, DSAW, LSAW
Standards	: API, ASTM/ASME, BS
Materials	: Carbon Steel, Alloys, Stainless Steel, Duplex, Super Duplex, Inconel, Titanium, Monel, Hastalloy
Grade	: API5LB, A106 Gr B, API5L Gr X42, X52, X60, X65, X70, X80, A333 Gr 6, A333 Gr 3, A671 CC60, A671 CC65, A335 P5, P9, P11, P22, P91, A312 Gr 316/316L, 304/304L, 321/321H, 347/347H, A790 UNS S31803, S32750 / S32760, 6Moly, 310, 317L, 319TI, 904L, Alloy 400, 625, 800, 825, C70600, C70620.
Specials	: Finned Tubes, Head Exchangers, Tubes, Casting & Duplex Tubing
Coating	: Polythene, Epoxy, Galvanized, 3LPE, Cement Lining

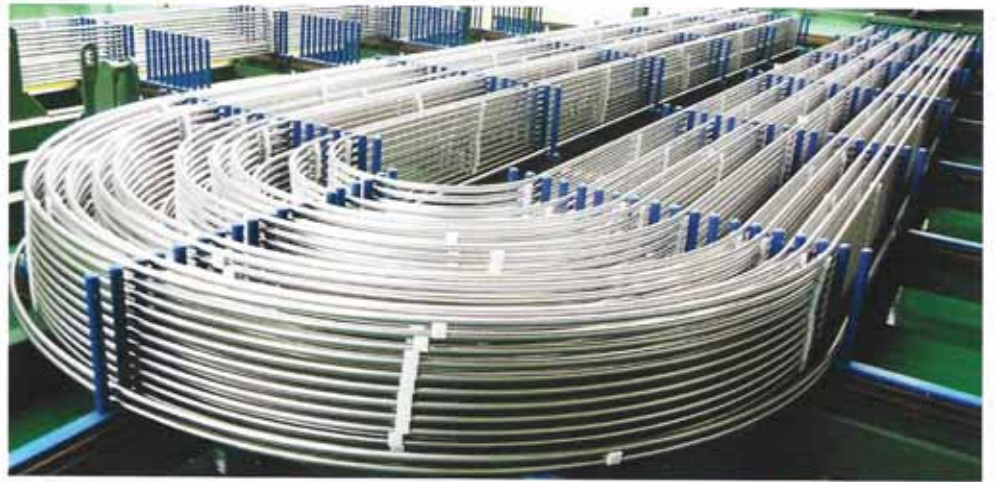
FASTENERS & GASKETS

Range of Fasteners	: 1/4" to 4" dia. Wide range of length.
Bolt Types	: Fully and partially threaded Stud Bolt complete with nuts : B7/2H, B7M/2HM & L7/4 L7M/7M, B8/Gr8, B8M/Gr.8M
Special	: U-Bolts, Anchor Bolts, Hex Bolts, Bi-Hex Bolts, Rods
Coating	: Galvanized, XYLAN, PTFE, Cadmium Plated
Range of Gaskets	: 1/2" to 96"
Type	: Spiral Wound, Ring Joint, Tanged Insert, PTFE Products, Rubber Sheets, Insulation Kits, Kammprofile
Material	: Carbon Steel, Stainless Steel, Duplex, Super Duplex



SPECIAL PRODUCTS

Insulation Joints, Fabricated and forged items according to customer drawings, Nozzles and Special Forgings, End Closures, U Tubes, Flame Arrestors, Pressure Vessels, Pig Launcher & Receiver, Cladding Works, Bursting Discs & End Caps





Pipeline Products LLC

ISOLATION JOINTS • Corrosion Solutions • PIPELINE EQUIPMENTS

ALFA Pipeline Products LLC is a leading manufacturer of high pressure isolation joints and pipeline equipments for the oil and gas industry. We were one of the first manufacturers in the world to design and develop the double and triple seal isolation joints. In the 90s the seal design resilience was improved upon continuously, and for decades now, has remained unmatched in safety and reliability when performing under extreme working conditions.

Our ASME code facilities in the Middle East offer quick deliveries, customized designs, competitive prices and superior technical support. The highest quality standard is constantly maintained in our day-to-day activities.



With many EPC contractors and Engineering firms, we have earned a reputation for reliability, innovation and integrity. Our expertise is built up by highly trained and experienced workforce; many with more than 25 years experience.

Improving pipeline integrity is a vital part of our ongoing business strategy. Careful pipeline integrity management means improved safety, maximized costs reduction and an extended pipeline life expectancy.

RANGE OF PRODUCTS AND SERVICES AT APP ARE:

CLADDING AND WELD OVERLAY,

SPECIAL FLANGES,

PRESSURE VESSELS,

PIG LAUNCHER RECEIVERS AND

VALVE REPAIRS

Monolithic Isolation Joints for Onshore & Offshore applications.

Monolithic Isolation Joints are used to electrically isolate pipeline segments. The joints are used for the sectioning of main pipelines (gas, oil, water) and service lines to ensure cathodic protection and electrical insulation in pipelines. APP iso-joints serve as a positive leak proof, long-lasting fitting against the flow of electrical current in all piping systems.

Iso-joints are available in different ratings, ANSI 150#, 300#, 400#, 600#, 900#, 1500#, 2500#. Diameters up to Ø 100".



Ø 96" 150# , Gr.B , TP 38 Barg,
Monolithic Isolation Joints. Project
Riyadh Long Distance Water
Transmission System, (RWTS).

Monolithic Isolation Joints for Onshore & Offshore applications.

APP isolation joints do not require maintenance. They provide cathodic protection for gas, water and petroleum pipelines, as well as contribute additional operation and maintenance cost savings.

APP iso-joints body steel components undergo inspection with a combination of ultrasonic (UT), magnetic particles (MT) and dye penetrant (LT) examination, before welding.



We offer the best solutions to prevent corrosion for all industry users including: onshore and offshore mains, petroleum refinery complex, chemical plants, waterworks, gas transmission and gas distribution systems.



Why use APP isolation joints ?

ADVANTAGES

- › Eliminates short circuits
- › Eliminated field assembly
- › Eliminates maintenance
- › Is less expensive
- › Is coated both internally and externally.
- › Is 100 percent hydrostatically tested.
- › Is 100 percent electrically tested
- › Is completely weld inspected
- › Is available in any diameter and pressure rating.



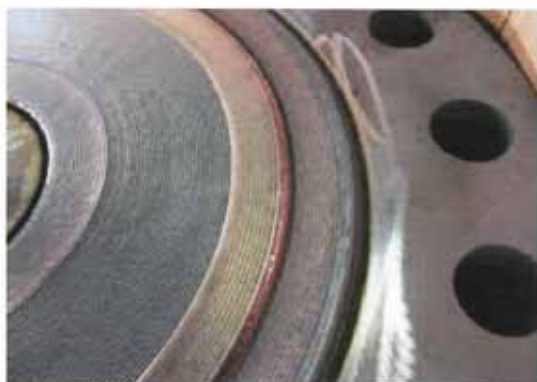
Weld Overlay Cladding

Protection against corrosion and wear.

Capacity

ALFA Pipeline Products LLC has the capacity to satisfy almost any weld clad requirement. Dedicated weld overlay workstations use single and multi head, and include conventional rotating stations, continuously rotating head stations, all equipped with the latest advanced control and inspection facilities.

APP has the capacity to clad bores ranging in size from Ø 6" up to Ø 96", weighing up to 10 tonnes.



Processes

A comprehensive range of welding processes is used, including hot & cold wire pulsed GTAW, GMAW, SMAW and submerged arc.



We overlay flanges, fittings, nozzles & pressure vessels.

Excellence

Our Welding Engineers and ASME qualified welders have more than 20 years experience working in weld overlay and maintenance services.



Our Turnkey Services

- › Weld overlay solutions for flange, fitting and pressure vessels.
- › Welding consultancy services.
- › NDT including DPI/MPI and ultrasonic testing.
- › PMI, X-ray and heat treatments are performed when required.
- › Full certification and documentation are provided upon job completion.

	MANUFACTURER	REPRESENT	PRODUCT	RANGE
	ZHEJIANG JIULI HI - TECH METALS CO., LTD - CHINA	AGENT	SMLS/WLD-SS/DSS INCOLOY. PIPES & TUBINGS	½"- 110" WIDE RANGE OF THICKNESS
	ZHEJIANG JIULI HI - TECH METALS CO., LTD - CHINA	AGENT	SMLS/WLD FITTING & FLANGES (BUTT WELD & FORGE)	½"- 84" WIDE RANGE OF THICKNESS
	TRIPLEFAST MIDDLE EAST - UAE	AGENT	FASTNERS CS/DSS/SDSS SPW/RTJ/CNAF GASKETS	1/4" - 4" 1/2" - 36"
	ALFA PIPELINE PRODUCTS - OMAN	MANUFACTURER	ISOLATING JOINTS / SPLIT TEE, CLADDING, ANCHOR FLANGE, PIG LAUNCHER, PRESSURE VESSELS	FULL RANGE TO CUSTOMER DRAWING
	COPROSIDER SRL - ITALY	AGENT	HOT INDUCTION BENDS BW & FORGED FITTINGS BARRED TEES	½"- 48" IN VARIOUS SCHEDULES ½"- 48" IN VARIOUS SCHEDULES ½"- 84" IN VARIOUS SCHEDULES 2"- 72" IN VARIOUS SCHEDULES
	GALPERTI SRL - ITALY	AGENT	FLANGES CS/LTCS/SS/DSS/IN-COLOY	½"- 36", 150# - 1500# CS/LTCS/SS/DUPLEX
	VERITAS MSI	AGENT	MULTIPHASE FLOW METERS HIGH EFFICIENCY SEPARATION SYSTEM WATER TREATMENT SYSTEM, DESULFURIZATION	COMPLETE RANGE
	HAEWON INDUSTRIES - KOREA	AGENT	COPPER NICKEL PIPES, TUBES, FLANGES AND FITTINGS	WIDE RANGE OF SIZE, THICKNESS & CLASS
	SYPRIS TECHNOLOGIES - USA	AGENT	END CLOSURES	TO CUSTOMER DRAWING
	DHV INDUSTRIES INC. - USA	AGENT/ STOCKIEST	BS 5351 & API 6D BALL VALVES GATE/GLOBE/CHECK VALVE/ STRAINER	½"- 36"- 150#, 300#, 600# ½"- 24"- 900#, 1500# ½"- 48"- 150# -1500#
	HOUSTON OIL FIELD EQUIPMENT INC. - USA	AGENT	ANGLE CHOKE VALVE	½"- 12", 150# - 2500#
	WUZHOU VALVE CO., LTD - CHINA	AGENT/ STOCKIEST	GATE/GLOBE/CHECK VALVE BS 1414, BS 1873 BS 1868 B5535 BALL VALVE BS 5351, API 6D	½"- 60"- 150# ½"- 48"- 300# ½"-48"- 600# ½"-36"- 1500# ½"- 12"- 2500#
	METALLUM BVBA - BELGIUM	AGENT/ STOCKIEST	GATE/GLOBE/CHECK VALVE BS 1414, BS 1873 BS 1868 B5535 BALL VALVE BS 5351, API 6D	½"- 60"- 150# ½"- 48"- 300# ½"- 48"- 600# ½"- 36"- 1500# ½"- 12"- 2500#
	GENE- TECH CONTROLS - INDIA	AGENT/ STOCKIEST	MONO FLANGE DBB.SBB & INSTRUMENTATION VALVES	Various Designs & Wide Range
	KOFLOW VALVE CO. LTD - CHINA	STOCKIEST	GATE/GLOBE/CHECK VALVE BS 1414, BS 1873 BS 1868 B5535 BALL VALVE BS 5351 API 6D	2½"- 60"- 150# ½"- 48"- 300# ½"- 48"- 600# ½"- 36"- 1500# ½"- 12"- 2500#
	APCO PIPE FITTINGS CO., LTD - CHINA	AGENT/ STOCKIEST	CS/SS/DSS BENDS & B.W FITTINGS FLANGES	½"- 48" IN VARIOUS SCHEDULES ½"- 72" IN VARIOUS CLASS & THICKNESS

	MANUFACTURER	REPRESENT	PRODUCT	RANGE
	XINXIANG SHENDA FILTRATION TECHNIQUE CO., LTD	AGENT	OIL FILTER DEVICES, AIR PURIFICATION DEVICES, WATER PURIFICATION DEVICES, PETROCHEMICAL SEPARATED BY FILTRATION, VARIETY OF FILTER CARTRIDGES	WIDE RANGE OF FILTER EQUIPMENTS
	OFFICINE MECCANICHE RIGHI S.P.A. - ITALY	AGENT/ STOCKIEST	B.W FITTINGS CS/LTCS/SS/DSS /INCOLOY	1/2" - 36" IN VARIOUS SCHEDULE
	T.K CORPORATION - KOREA	STOCKIEST	B.W FITTINGS CS/LTCS	1/2" - 36" IN VARIOUS SCHEDULE
	THAI BENKAN CO., LTD - THAILAND	STOCKIEST	B.W FITTINGS CS/LTCS	1/2" - 14" IN VARIOUS SCHEDULE & THICKNESS
	TECTUBI RACCORDI S.P.A. - ITALY	STOCKIEST	B.W FITTINGS CS/LTCS/SS/DSS /INCOLOY	1/2" - 36" IN VARIOUS SCHEDULE
	DELCORTE (JD) - FRANCE	STOCKIEST	FORGED FITTINGS & O-LETS CS/LTCS/ SS/ DSS/INCOLOY	1/2"-14" IN VARIOUS CLASS & SCHEDULE
	VIAR S.P.A. - ITALY	STOCKIEST	CS/SS/DUPLEX FORGED FITTINGS, O-LETS	WIDE RANGE OF SIZE, SCHEDULE & CLASS
	LAME S.R.L. - ITALY	STOCKIEST	FORGED FITTINGS & O-LETS	WIDE RANGE OF SIZE, SCHEDULE & CLASS
	WELDING UNITS LTD - UK	AGENT	CS/SS/DSS FLANGES	MISALIGNMENT FLANGES
	ULMA PIPING - SPAIN	STOCKIEST	FLANGES CS/LTCS	1/2" - 36", 150# - 1500# WIDE RANGE OF SCHEDULE
	OFFICINE AMBROGIO MELESI & CO. SRL - ITALY	STOCKIEST	FLANGES CS/LTCS/SS/DSS/INCOLOY	1/2" - 36", 150# - 1500# WIDE RANGE OF SCHEDULE
	OFFICINE BINDA & GALPERTI SRL - ITALY	STOCKIEST	FLANGES CS/SS/DSS	1/2"-36" IN VARIOUS CLASS & SCHEDULE
	SE YU FLANGES - KOREA	AGENT	FLANGES CS/SS/DSS. SR NOZZELS, FLANGED NOZZELS	1/2" - 36" IN VARIOUS CLASS & SCHEDULE
	LONGSHAN PIPE SOLUTIONS CO., LTD	AGENT	FLANGES, FITTINGS, WELDED SPOOLS, PIPE SPOOL	1/2"- 84" CABON STEEL & HIGH YIELD CARBON STEEL
	SITINDUSTRIE MARINE SAS - FRANCE	STOCKIEST	COPPER NICKEL PIPES, TUBES, FLANGES AND FITTINGS	WIDE RANGE OF SIZE, THICKNESS & CLASS
	CIXI AIFLON SEALING MATERIAL - CHINA	AGENT/ STOCKIEST	T.I, S.P.W. RTJ GASKET & SEALING MATERIAL RUBBER SHEETS	WIDE RANGE OF SIZE, THICKNESS & CLASS
	SHIRDI SAI ELECTRICALS LTD - INDIA	AGENT	EPC FOR ELECTRICAL POWER DISTIRBUTION, PROCUTION OF TRANSFORMERS	WIDE RANGE OF TRANSFORMER

