



SOEC
Since 2004

January 2025

COMPANY PROFILE

Delivering Excellence for Over 20 Years

A background image showing industrial machinery, likely a motor or generator, with large copper coils and metal components. The text is overlaid on this image.

Delivering Excellence for over 20 years

About Us.

Introduction

Sharjah & Oman Engineering LLC, established in 2004, has grown to become one of the UAE's leading specialists in the repair and refurbishment of rotating electrical equipment.

We specialize in the rewinding and overhauling of AC/DC motors, alternators, generators, and pumps, delivering reliable and efficient solutions tailored to our clients needs.

Our services cater to a wide range of critical industries, such as oil & gas, marine, power generation, petrochemicals, steel, cement & water treatment.

At Sharjah & Oman Engineering, quality remains at the core of everything we do. We are committed to delivering superior service at competitive prices—ensuring high standards are never compromised.



Mission & Vision.

MISSION

At SOEC Group, our mission is to be the trusted partner for all motor rewinding and overhauling requirements. We are committed to delivering exceptional value by providing high-quality repair and maintenance services that enhance equipment performance, minimize downtime, and support a more sustainable future.

VISION

At SOEC Group, we envision a future where precision and excellence redefine the landscape of motors, generators, and alternators. This vision drives our unwavering commitment to innovation, dependable performance, and sustainable practices. Through this dedication, we position ourselves as the trusted partner of choice for all your rewinding, overhauling, and servicing needs.

Our Proficiencies

- HV/LV Alternators (up to 200MW, 13.8KV)
- AC /DC Motors (Up to 20MW, 11KV)
- Explosion-proof motors to IEC 60079-19 standard (Ex'd', Ex'e', Ex 'de', Ex 'n', Ex 'p')
- GE 752 & EMD Drill Motors
- GEB 20 Drilling Motors
- GEB 22 Mud Pump Motors
- GEB 28 Drawworks Motors
- Offshore Rig Jacking Motors
- Baylor Brake Repairs
- Eddy Current Brake
- Compressor Motors
- District cooling Pump Motors
- Submersible Pump Repairs
- Vibrator Motors



Our Facility

We take pride in operating a newly renovated, purpose-built 40,000 square foot facility strategically located in Sharjah, United Arab Emirates. As the largest of its kind in the Northern Emirates, our facility is fully equipped with comprehensive in-house capabilities designed to deliver reliable and cost-effective rewinding solutions.

Our infrastructure enables us to maintain complete control over quality, adhere to stringent technical standards, and ensure timely delivery for every project. From start to finish, we are committed to providing our clients with the highest level of satisfaction, backed by engineering excellence and industry-best practices.

Facility Equipments

- 2x10 ton Demag Overhead Crane
- 5 ton & 3 ton Forklifts
- 100 ton Mobile crane
- 2 x Dynamic Balancing Machine (Rotors up to 2m in diameter, 5m in length, 12t job handling capacity, and balancing speed range of 210 - 1500 rpm)
- 3 x Baking Ovens (3x3x3mtr, 2x2x2mtr and 1x1x1mtr)
- Varnish Dip Tank
- Sand Blasting Machine
- 5 X Lathe Machines (Turning Dia of 2m and Max Length of 6m)
- Motor Testing Panel: Up to 11 Kv Testing capacity.
- VFD Testing Panel
- High Voltage Step Up Transformer (2000 KVA Transformer 400V to 3.3, 6.6 or 11 KV.)
- 3.5 Meter x 2.5 Meter Test Bed





Workshop Repairs

REWINDING & OVERHAULING

Our state-of-the-art rewinding facility is fully equipped with a wide range of advanced tools, specialized machinery, and testing equipment—enabling us to handle the complete repair, rewinding, and refurbishment of AC/DC motors, alternators, pumps, and other rotating electrical equipment.

Backed by a team of highly skilled technicians and qualified engineers, we ensure that every job is performed with precision, technical excellence, and full compliance with international standards.

In addition, our workshop is certified and authorized to carry out repairs on all types of Explosion Proof (Ex Rated & UL Rated) Motors, adhering strictly to relevant safety and regulatory guidelines. We understand the critical importance of safety in hazardous environments and guarantee full restoration of explosion-proof integrity in all repair work.

With a strong focus on reliability, safety, and performance, we offer tailored solutions that meet the diverse needs of our industrial clients across the region.

ELECTRICAL TESTING

Our facility is fully equipped with state-of-the-art equipments to carry out electrical testing on HV/LV, AC/DC Motors, Pumps, Generators, and Alternators. We can carry out electrical testing, both on-site and off-site.

Electrical Testing Equipment-

- Surge Comparison Tester (0 To 10KV)
- Sand Blasting Machine
- Winding Analyzer (Megger Baker ADX 15A) (Up To 15KV)
- BM25 Megger (5kV)
- Digital Low Resistance Ohm Meter With High Current Capacity
- DC High Pot (Up To 25KV)
- Vibration Analyzer (VB-8 With Trim Balancing)
- High Voltage Tester with Probe (Up To 55KV)
- Growler (Test For Rotor/Stator Core Testing)
- Boroscope Inspection Kit
- FLIR E SERIES Thermographic Camera
- Fluke Vibration Analysis Equipment
- Easy-Laser Alignment Kit (Including Belt Alignment)
- Phase Sequence Meter (non-contact)
- Tachometer
- Digital Mechanical Stethoscope
- Other commonly used testers





STATE OF THE ART TESTING EQUIPMENT

ADX Automated Static Motor Analyzer

Megger Baker ADX is a compact, high-performance motor tester with a 10.4" touchscreen. It supports easy updates via Wi-Fi/LAN and features 16kV-rated detachable leads for quick field replacements. With built-in battery backup, it moves seamlessly between assets.

15kV testing capacity (expandable to 40kV) and support tests like:

- Winding Resistance
- IR - Insulation Resistance Test
- PI - Polarization Index
- DA - Dielectric Absorption
- DC HiPot
- Surge with EAR+™
- Partial Discharge



DYNAMIC BALANCING

Unbalanced rotors can lead to excessive vibration, increased bearing loads, and early mechanical failure. To ensure optimal performance and reliability of rotating equipment, precise rotor balancing is essential.

At SOEC Group, we provide dynamic balancing services for a wide range of industrial rotors, helping our clients reduce downtime, improve efficiency, and extend equipment lifespan.

Our Capabilities

- Our facility is equipped with advanced balancing machines capable of handling:
- Rotors up to 15 tons
- This allows us to accommodate both medium and heavy-duty industrial applications with precision and reliability.

Standards and Accuracy

- All rotors are balanced in compliance with ISO 1940/1 standards, specifically:
- G 2.5 Grade – for general industrial machinery
- G 1.0 Grade – for high-precision equipment
- Our experienced team ensures each rotor is carefully mounted and balanced to minimize vibration, prevent fatigue failure, and protect bearing integrity.

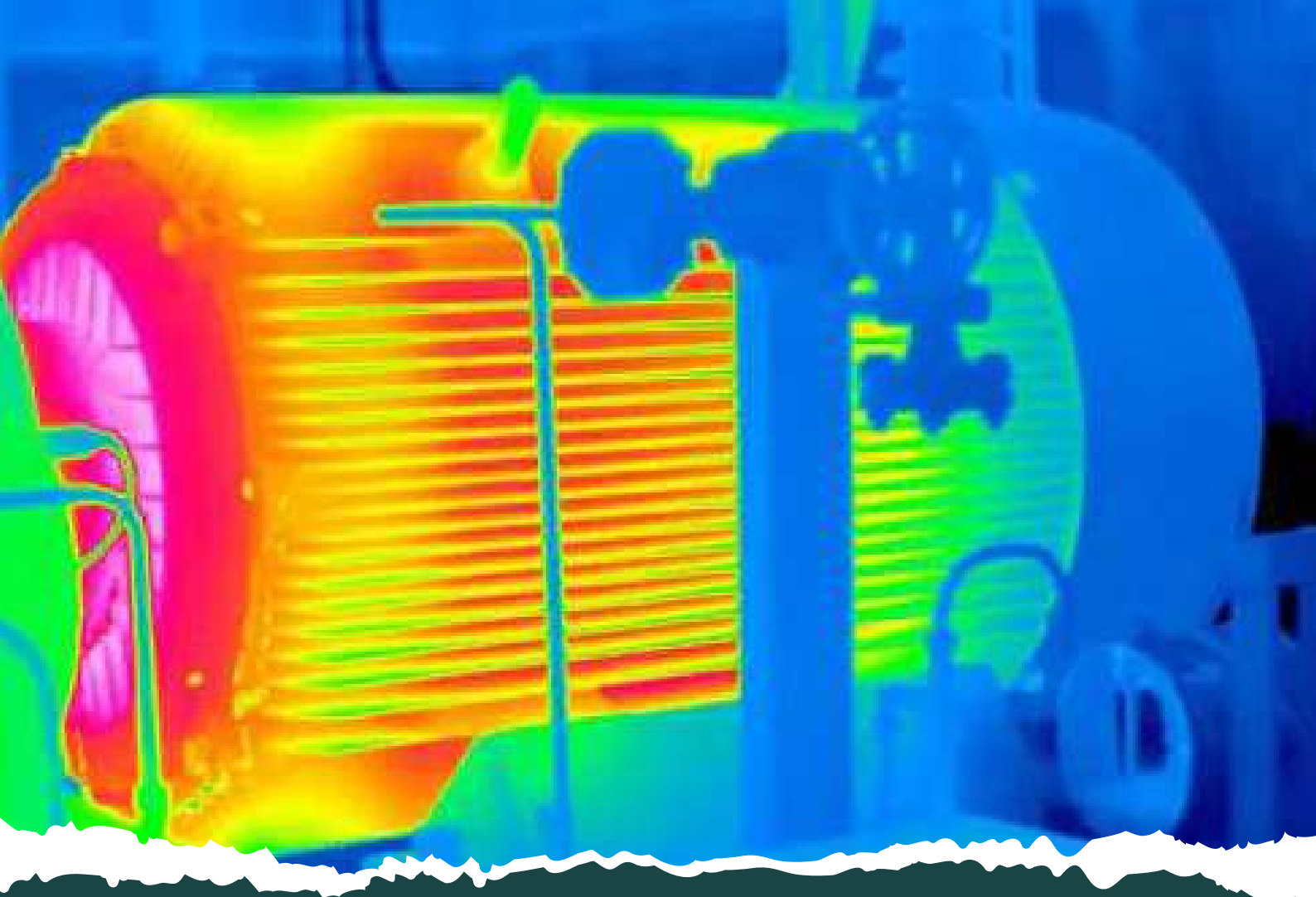


CONDITION MONITORING

At SOEC Group, we utilize the Bently Nevada VB8 Vibration analyzer, a cutting-edge diagnostic tool that significantly enhances our ability to identify and prioritize mechanical issues quickly. This advanced tester helps our vibration analysts detect common faults such as misalignment, unbalance, looseness, and bearing defects with great accuracy.

The Bently Nevada VB8 Vibration analyzer delivers comprehensive overall vibration measurements along with detailed spectral diagrams, enabling precise assessment of machine health. Its automated fault severity ranking allows us to focus on the most critical problems first, ensuring efficient and effective maintenance.

With clear, actionable recommendations based on real data, we help prevent unexpected breakdowns, reduce downtime, and extend the operational life of your rotating equipment.



THERMOGRAPHY

At SOEC Group, we use the FLIR Ex Series Thermal Imaging Camera to support advanced condition monitoring and preventive maintenance. This technology helps us detect potential issues before they lead to equipment failure or costly downtime.

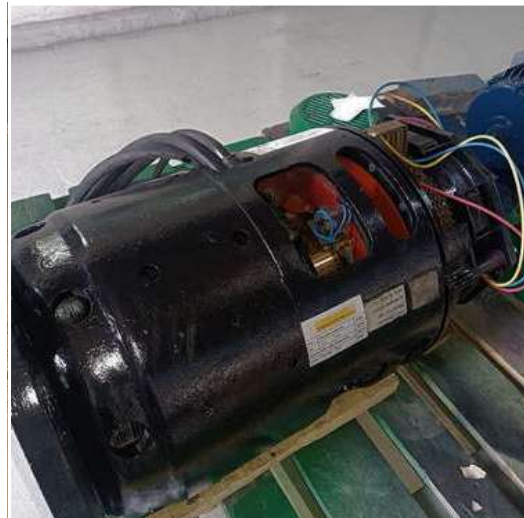
Equipped with a 320 × 240 pixel thermal detector, the FLIR camera provides high-resolution thermal images and measures temperatures up to 650°C (1202°F) with impressive accuracy. The crisp, vibrant imaging adds valuable detail and clarity, enhancing the reliability of inspections.

Key features include:

- Three spot meters for targeted temperature readings
- Live max/min temperature display within a defined area on-screen
- Enhanced thermal sensitivity for precise heat detection

This tool enables our technicians to identify overheating components, insulation failures, and other anomalies, helping ensure equipment safety, efficiency, and long-term performance.

SPECIALIST IN RIG ROTATING EQUIPMENTS SERVICES





TRANSFORMER SERVICES

➤ Overhauling / Servicing, Repairing, and oil filtration of all types of Transformers up to 11KV, 10,000KVA

Sharjah Oman Engineering transformer maintenance services include

- Gasket/Bushing Repair
- Breakdown Inspection
- Oil Replacement
- Oil Testing and Filtration Services
- Transformer Modification
- OLTC Servicing and Repair
- Erection and Commissioning
- P.D Measurement
- Measurement of Dynamic Resistance of OLTC
- Repair to Original Specifications
- Rewinding Services
- Insulation Testing
- Leak Detection and Rectification
- Pressure Clamping
- Replacement of Parts & Accessories
- Thermography
- BDV (Breakdown Voltage), Moisture Content, and DGA (Dissolved Gas Analysis) Testing

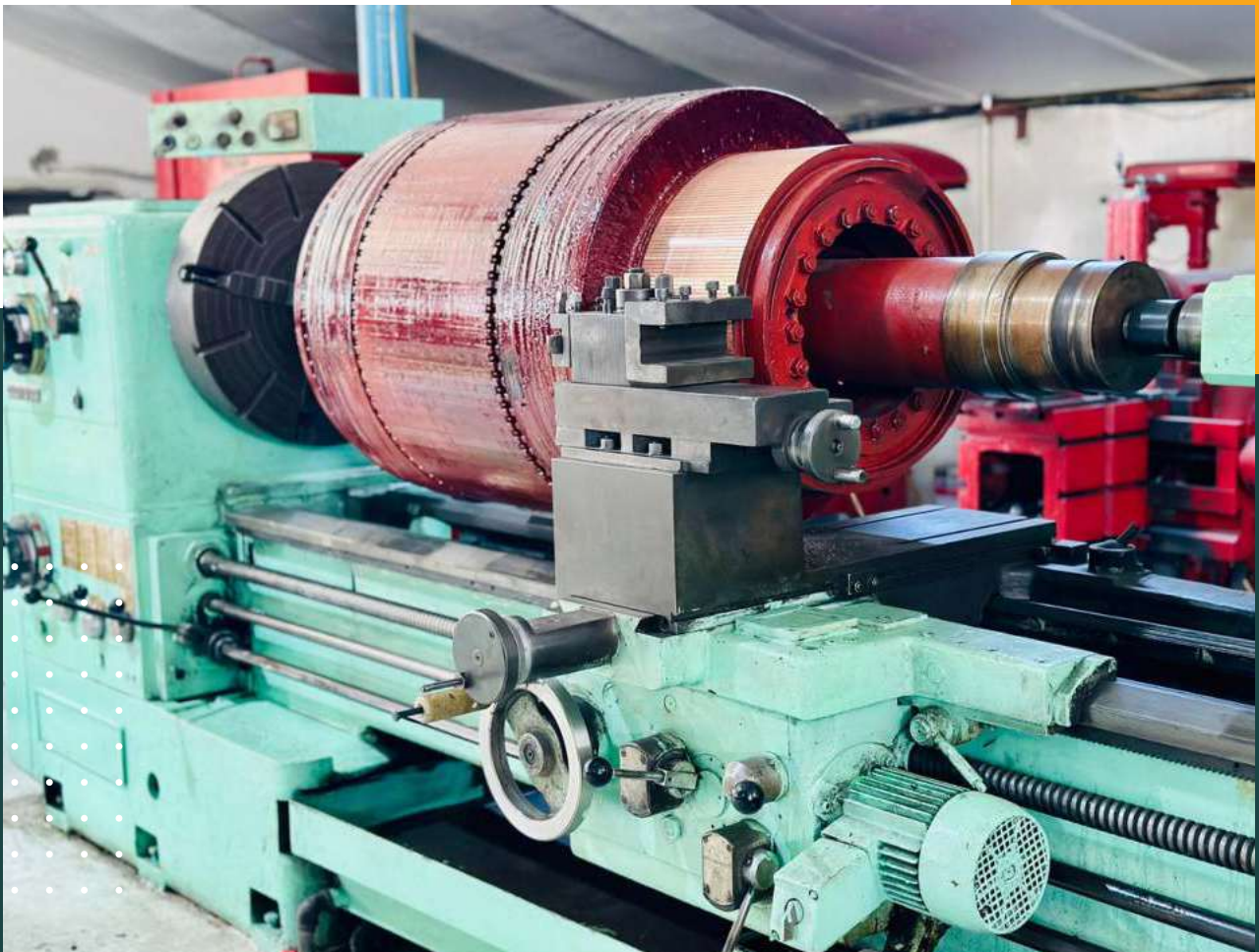
COMPONENT SALVAGING WORKS

We specialize in the manufacturing, salvaging, and reconditioning of critical motor components, including rotor shafts, bearing seats, bearing journals, housings, end shields, slip rings, and more.

Our services also include:

- Precision gear replacement
- Pressing out and pressing in of rotor shafts with forces up to 500 tons
- Replacement of worn or damaged couplings
- Repair and refurbishment of white metal bearings

These capabilities enable us to restore essential components to optimal condition, extending equipment life and improving operational reliability.



LASER SHAFT ALIGNMENT



At SOEC Group, we use the Easy-Laser XT440, a versatile and precise laser alignment system capable of handling horizontal, vertical, and flange-mounted machines.

With the XT440, we can perform comprehensive shaft alignment and diagnostic tasks, including:

- Accurate machine alignment
- Base twist detection
- Bearing play evaluation
- Soft foot checks
- Monitoring machine movement over time
- Detailed documentation and reporting of alignment results

This advanced tool helps us ensure optimal machine performance, reduce vibration, and extend the lifespan of rotating equipment.

MACHINE SHOP

Our fully equipped machine shop houses a wide range of machinery, including lathe machines of various sizes, drilling machines, shaping machines, milling machines, line boring machines, and vertical boring machines—enabling us to handle a broad spectrum of precision machining tasks.

We also operate a portable line boring machine for on-site machining, allowing us to restore worn bores to their original specifications without dismantling heavy components.

In addition, we undertake reconditioning works INSITU, minimizing downtime and reducing the need for component transport.





DRY ICE CLEANING

Unlock precision and performance with SOEC Group's specialized dry ice cleaning service for electric motors and stators. Our advanced, non-abrasive method effectively removes contaminants, grease, and residues—without harming your critical equipment.

Powered by modern technology and skilled technicians, we help extend the lifespan of your machinery and restore it to peak condition. Whether you're maintaining, restoring, or cleaning heavily contaminated components, SOEC Group delivers custom solutions that enhance efficiency and reliability.

Experience the SOEC advantage—where expertise meets excellence in electric motor and stator care.





**ISO 9001
Registered**



**ISO 45001
Registered**



**ISO 14001
Registered**

ISO CERTIFIED COMPANY

At the core of our operations lie the principles of Quality, Integrity, Engagement, and Performance. These values drive every decision we make and define our approach to business.

We are unwavering in our commitment to our QHSE (Quality, Health, Safety, and Environment) policy, striving to achieve and sustain the highest standards through:

- A steadfast dedication to safety across all operations
- Empowerment and active involvement of our employees
- Consistent delivery of exceptional customer satisfaction
- Full compliance with established procedures and industry best practices
- A culture of continuous improvement and innovation
- Proactive identification and mitigation of workplace hazards

This commitment ensures that we not only meet regulatory requirements but exceed expectations—safeguarding our people, our clients, and the environment.

EASA CERTIFIED COMPANY

As an EASA Member and EASA Accredited Workshop, we are dedicated to upholding the highest standards of Quality, Health, Safety, and Environmental (QHSE) excellence in every aspect of our operations.

Backed by EASA's globally recognized benchmarks for service integrity and technical performance, we are committed to:

- Maintaining an uncompromising focus on health and safety in the workplace
- Actively engaging and empowering employees through continuous training and development
- Ensuring superior customer satisfaction through consistent service quality and reliability
- Adhering to EASA-recommended practices, technical standards, and compliance protocols
- Driving continuous improvement through performance monitoring and innovation
- Proactively identifying and mitigating operational and environmental risks

Our dual recognition as both an EASA member and accredited facility reflects our unwavering commitment to delivering precision, reliability, and safety—every time.



COMPLIES WITH
EASA AR100

**Sharjah Oman
Engineering Co., LLC**
Sharjah, United Arab Emirates

**MEMBER
EASA**



**The Electro·
Mechanical
Authority**

IEC

IECEX

TM

IECEX CERTIFIED FACILITY

The IECEx certified service facility scheme assesses and certifies that organizations and workshops that provide Ex equipment selection, design, installation, inspection, maintenance, repair, overhaul and reclamation services to the Ex industry do so in accordance with the requirements of the following IEC International Standards: the IEC 60079-10 series, IEC 60079-14, IEC 60079-17 and IEC 60079-19.

The requirements of these standards are intended to ensure that explosion protection features designed and built into the Ex equipment are not compromised during any selection, design, installation, inspection, maintenance, repair, overhaul or reclamation processes.

IECEX-certified service facilities must meet stringent requirements, including:

- Compliance with IECEX procedures and operational documents
- Implementation and maintenance of an ISO 9001-based quality management system
- Availability of fully operational facilities, test equipment, and traceability systems
- Employment of technically competent personnel with up-to-date knowledge of Ex standards and practices

IECEX CoC Certified Service Facility		
INTERNATIONAL ELECTROTECHNICAL COMMISSION IEC Certification System for Explosive Atmospheres		
For rules and details of the IECEx Scheme visit www.iecex.com		
Certificate No.:	IECEX SGS 00004	Page 1 of 1
Status:	Current	Issue No: 0
Date of Issue:	2023-12-04	Certification Interval: Issue 1 (2024-11-21) Issue 0 (2023-12-04)
Applicant:	Sharjah Oman Engineering Co. LLC Wadi Al Hada Street Plot # 82 Sharjah Industrial Area 17 Sharjah United Arab Emirates	
Type of Service:	Repair, overhaul, reclamation to IEC 60079-19:2019	
Type of Protection:	Ducts to IEC 60079-21 "1", Flameproof Enclosure "n", Increased Safety "n", Pressurisation "n", Type of Protection "n"	
Scope of Service:	Ext. Encl, Exp. Encl, Exp. Encl Rotating electrical machines and associated terminal enclosures	
Locations covered by this Certificate:	Sharjah Oman Engineering Co. LLC Wadi Al Hada Street Plot # 82 Sharjah Industrial Area 17 Sharjah United Arab Emirates	
Facility Audit Report:	SD/SO/SF/AR/24.0001003	
This certificate is based on an evaluation that the Service Facility and associated locations were assessed and found to comply with the IECEx Scheme requirements, relating to the type and scope of service listed above. This certificate is granted subject to the conditions set out in IECEx Scheme Rules, IECEx OI and Operator's Documents as applicable.		
Approved for Issue on behalf of the IECEx Certification Body:	R B Sinclair	
Position:	Technical Manager	
Signature:	(for printed version)	
Date:	(for printed version)	
1. This certificate and schedule may only be reproduced in full. 2. This certificate is not transferable and remains the property of the issuing body. 3. The status and authenticity of this certificate may be verified by visiting www.iecex.com or use of this QR Code.		
Certificate issued by:	SGS United Kingdom Ltd Wackenhut Business Park Bloxham Lane Buxton, Derbyshire SK17 9FZ United Kingdom	



JOBS HANDLED BY SOEC









BRANDS WE SERVICE



CRR YONGJI ELECTRIC CO.



SIEMENS



STAMFORD



CONTACT INFORMATION

+971 50 481 7715

info@soecgroup.ae

www.soecgroup.ae



Our Location



Follow Us On LinkedIn



Message Us On Whatsapp



Subscribe To Our YouTube Channel



Follow Us On Instagram



Follow US On Facebook

