



SDE Equipment Trading LLC proudly holds the Middle East distribution rights for the HDI Hyundai Infracore range of diesel generator engines, pumps, and off-highway diesel engines along with this SDE is also the sole distributor of **Mahindra Construction Equipment** as well as an EP Dealer for the UAE.

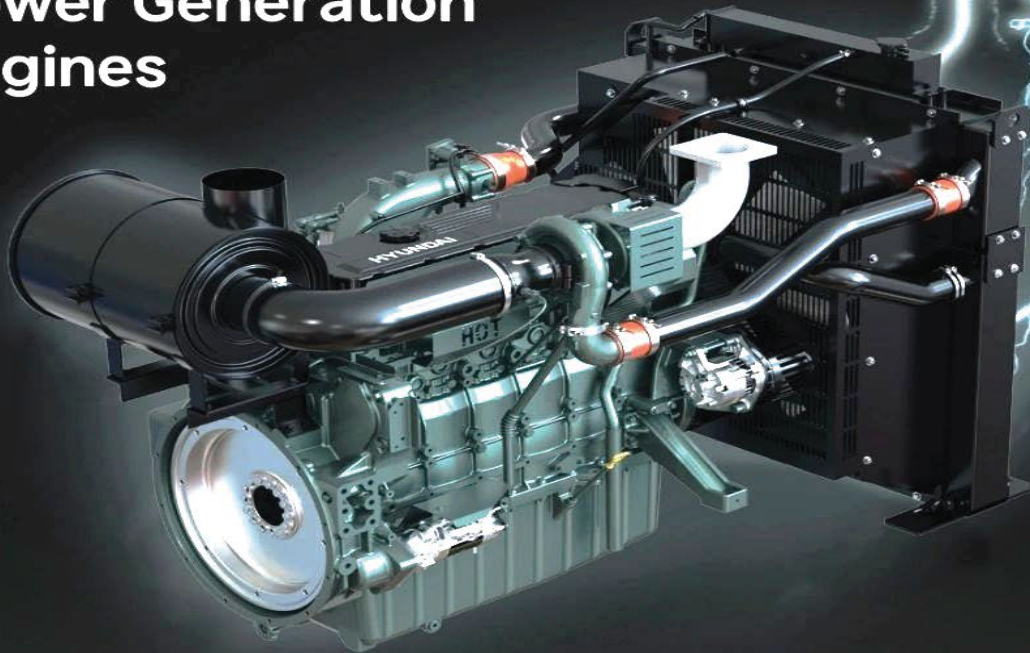


Powered by  
**Innovation**

# HYUNDAI

## NEW DX SERIES

### Power Generation Engines



CONTACT US: Office +971 (0) 6 566 0303 / Fax +971 (0) 6 577 8826 / [www.sdeequipment.com](http://www.sdeequipment.com)  
Emirates Industrial City, Sharjah, United Arab Emirates



## PUMP ENGINES ( FIRE PUMP )



Model	Type		Output (ISO 3046)		Displacement (l)	Dry Weight (Kg)
	No. of Cyl	Aspiration	Max.Torque Nm(lb-ft) @ rpm	Max. Power kW(HP) @ rpm		
PU086TI	L6	TI	228(306) @ 2450	1177(868) @ 1500	8.1	800
PU126TI	L6	TI	294(394) @ 2100	1589(1172) @ 1400	11.1	925
PU158T1	V8	TI	408(547) @ 2350	2384(1758) @ 1470	14.6	1000
PU180TI	V10	TI	511(685) @ 2350	2894(2135) @ 1470	18.3	1225
PU222TI	V12	TI	625(838) @ 2350	3669(2706) @ 1470	21.9	1650

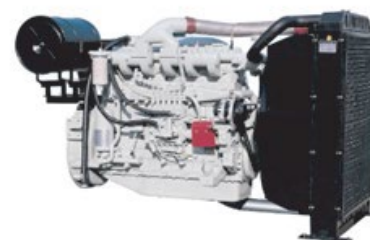
PU086T>



PU086TI>



PU126TI>

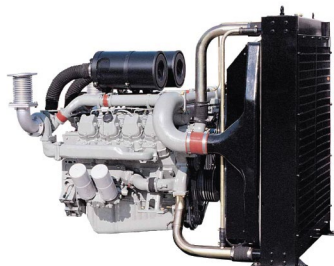


## Generator Gas Engines



Model	Type		Output (ISO 3046)		Displacement (l)	Dry Weight (Kg)
	No. of Cyl	Aspiration	kWm @ 1500 rpm standby/Prime/	kWm @ 1800 rpm standby/Prime/		
GV158TI	V8	TI	253/230	297/270	14.6	1230
GV180TI	V10	TI	319/290	374/340	18.3	1415
GV222TI	V12	TI	385/350	451/410	21.9	1620
GV222CA	V12	TI	405/368	470/427	21.9	1560
GV222CB	V12	TI	475/444	520/473	21.9	1560

GV158TI>



GV180TI>



GV222TI>

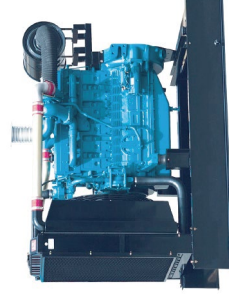
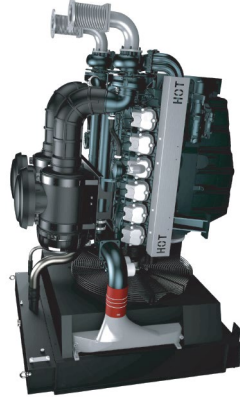
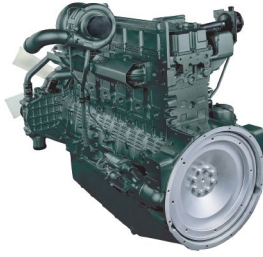




# HDI Generator Engines



Engine Model	Type		Standby 1,500rpm, 50HzNet		Prime 1,500rpm, 50HzNet		Standby 1,800rpm, 60Hz		Prime 1,800rpm, 60Hz		Flywheel , Clutch	Fuel System
	No. of Cyl	Aspiration	Kw/m	Kva	Kw/m	Kva	Kw/m	Kva	Kw/m	Kva		
DP054CA	L4	TI	125	139	114	126	150	164	136	148	SAE 3M, 11-1/2"	Common Rail, controlled by ECU
DP054CB	L4	TI	156	175	142	159	175	193	159	174	SAE 3M, 11-1/2"	Common Rail, controlled by ECU
DP054CC	L4	TI	188	213	177	200	210	234	197	219	SAE 3M, 11-1/2"	Common Rail, controlled by ECU
DP086CA	L6	TI	210	239	191	216	234	261	213	238	SAE 1M, 14	Common Rail, controlled by ECU
DP086CB	L6	TI	225	256	205	233	260	293	236	264	SAE 1M, 14	Common Rail, controlled by ECU
DP086CC	L6	TI	245	280	223	254	285	321	259	291	SAE 1M, 14	Common Rail, controlled by ECU
DP086CD	L6	TI	270	309	245	280	310	350	282	318	SAE 1M, 14	Common Rail, controlled by ECU
DP086CE	L6	TI	294	336	267	305	335	380	305	345	SAE 1M, 14	Common Rail, controlled by ECU
DP126CA	L6	TI	321	396	292	325	375	414	341	374	SAE 1M, 14	Common Rail, controlled by ECU
DP126LA	L6	TI	321	369	293	336	375	428	346	394	SAE 1M, 14	Mechanical Injection Pump
DP126CB	L6	TI	362	408	329	369	402	445	365	402	SAE 1M, 14	Common Rail, controlled by ECU
DP126LB	L6	TI	362	417	327	376	402	459	366	417	SAE 1M, 14	Mechanical Injection Pump
P158LE	V8	TI	414	468	363	408	458	510	402	444	SAE 1M, 14	Mechanical Injection Pump
DP126CD	L6	TI	414	469	376	424	458	511	416	462	SAE 1M, 14	Common Rail, controlled by ECU
DP126CE	L6	TI	441	501	401	454	502	563	449	501	SAE 1M, 14	Common Rail, controlled by ECU
DP158LC	V8	TI	449	509	408	461	513	575	466	519	SAE 1M, 14	Mechanical Injection Pump
DP158LD	V8	TI	540	616	464	526	556	625	505	565	SAE 1M, 14	Mechanical Injection Pump
DP180LA	V10	TI	552	633	502	574	615	698	559	632	SAE 1M, 14	Mechanical Injection Pump
DP180LB	V10	TI	612	704	556	638	661	752	601	682	SAE 1M, 14	Mechanical Injection Pump
DP222LA (60Hz)	V12	TI					737	826	670	747	SAE 1M, 14	Mechanical Injection Pump
DP222LB	V12	TI	664	757	604	686	782	879	711	795	SAE 1M, 14	Mechanical Injection Pump
DP222LC	V12	TI	723	828	657	749	828	934	753	845	SAE 1M, 14	Mechanical Injection Pump
DP222CA	V12	TI	727	834	663	758	836	944	762	856	SAE 0, 18	Common Rail, controlled by ECU
DP222CB	V12	TI	790	908	705	808	890	1008	810	913	SAE 0, 18	Common Rail, controlled by ECU
DP222CC	V12	TI	875	1009	790	908	995	1132	900	1019	SAE 0, 18	Common Rail, controlled by ECU



CONTACT US: Office +971 (0) 6 566 0303 / Fax +971 (0) 6 577 8826 / [www.sdeequipment.com](http://www.sdeequipment.com) / Emirates Industrial City, Sharjah, UAE

# mahindra CONSTRUCTION EQUIPMENT

The designers at Mahindra have taken technology next level. They have made a dramatic leap in the Backhoe Loader category by creating the new EarthMaster VX. With 55 kW (74 HP), a CRDI Mahindra engine, best-in-class fuel efficiency, and optimal backhoe performance.



## BEST-IN-CLASS FUEL EFFICIENCY

WITH THE PROVEN MAHINDRA DITEC ENGINE Mahindra has taken its learnings from tractor engines, to bring its fuel efficiency down incredible. 10%\*\* more savings with Mahindra's Engine 66.9 kW (91 HP) Turbo charged intercooled diesel engine. Fuel efficient, compact 4 cylinder, 3532cc engine. BS III Emission norms compliant.



Attachments make a machine more versatile and are to be found on forklifts. like bale clamps, block clamps, double pallet handlers, carton clamps, fertilizer pushers, foam rubber clamps, hinged forks, log holders, olecranon drum clamps, paper roll clamps, push pull clamps etc.

**SDE offers a wide range of Lifting Equipment.**



SDE has a wide range of EP diesel, electric forklifts and material handling solutions suited for every industry. So, whether it is a minimum tonnage electric; 3 Wheel Forklift or a heavy -duty Diesel Forklift, we have something to suit your needs and, of course, your budget. We are a trusted provider of sales and after-sales services for forklifts, material handling equipment and Backhoe Loaders and diesel engines, across the UAE.



**ABOUT US - SDE Equipment Trading LLC** is a part of The Abduljawad Group of Companies which is a leading Saudi Arabian family-owned multi-segment business group with a diversified portfolio of businesses which deal in Power generation equipment, Heavy equipment, Automotive dealerships, Lease financing, and Residential property development. Abduljawad Group operates through several entities in Saudi Arabia, UAE and USA, with Tawad Holding Company as the primary holding company for the Group in Saudi Arabia and UAE.

**SDE Equipment Trading LLC** and its larger Saudi Arabian sister company Saudi Diesel Equipment Company (SDEC) are wholly owned subsidiaries of Tawad Holding Company. SDEC was established in Saudi Arabia in 1978 and SDE Equipment Trading LLC was established in UAE in 2014.

Over the years, SDEC's portfolio has expanded to include manufacturing and rental of power generation equipment, trading in construction, lifting & concrete equipment, and related after sales activities. SDEC has established itself as a prominent player in the equipment market in Saudi Arabia. SDE Equipment Trading LLC leverages on capabilities and support of SDEC to provide highest quality of equipment and after sales services to customers in the UAE market.



**CONTACT US: Office +971 (0) 6 566 0303 / Fax +971 (0) 6 577 8826 / [www.sdeequipment.com](http://www.sdeequipment.com)  
Emirates Industrial City, Sharjah, United Arab Emirates**



## About S D E Equipment Trading L.L.C.

**SDE Equipment Trading LLC** is proudly an **EP** Dealer for the UAE, along with this **SDE** is also the distributor for the **HDI Hyundai Infracore** range of diesel generator engines, pumps and off-highway diesel engines UAE Dealer for the **Mahindra Construction Equipment**.

Our commitment to delivering high-quality, reliable equipment from world-renowned manufacturers, backed by exceptional after-sales support; has positioned SDE as a preferred partner for clients seeking dependable power and material handling solutions.



SDE offers a wide range of Lifting Equipment. We have a variety of Forklifts and Material Handling Equipment which include the following: Electric Forklifts, Pallet Trucks, Pallet Stackers, Order Pickers & Tow Tractors, Reach Trucks, Very Narrow Aisle (VNA) Trucks Incl.

### High Voltage machines.

EP Electric Forklifts can be used to carry heavy loads on a variety of terrains with many operating just like an IC Truck. They are a great option for businesses looking to maximise warehouse space utilization, as their smaller dimensions increase maneuverability, allowing for efficient stacking of goods in tight spaces.

### Diesel Forklifts

Internal Combustion (IC) trucks are flexible in usage and have a low initial investment. Simply fuel when you need, the truck is always ready to use. Any technician can do repairs and service on IC trucks. IC trucks are in good demand as secondhand truck.

IC truck engines are industrial engines, delivering high and constant torque at low engine speed, robust and with efficient fuel consumption.

### Attachments

Attachments make a machine more versatile and are to be found on forklifts. like bale clamps, block clamps, double pallet handlers, carton clamps, fertilizer pushers, foam rubber clamps, hinged forks, log holders, olecranon drum clamps, paper roll clamps, push pull clamps etc.



**CONTACT US: Office +971 (0) 6 566 0303 / Fax +971 (0) 6 577 8826 / [www.sdeequipment.com](http://www.sdeequipment.com)  
Emirates Industrial City, Sharjah, United Arab Emirates**

**TDL162**  
 -Capacity 1.6t  
 -Lifting Height 3000-6000mm  
 -80v/280Ah Li-ion battery  
 -AC Controller  
 -Integrated Charger



**NEW** CE



**EFL302/EFL352**  
 -Capacity 3.0/3.5T  
 -Lifting Height 3000-6000mm  
 -80v/205Ah/280Ah/410Ah Li-ion battery  
 -AC Controller  
 -Optional Integrated Charger

CE

**EFX5-251/301/351/381**  
 -Capacity 2.5/3.0/3.5/3.8T  
 -Lifting Height 3000-6000mm  
 -80v/280Ah/560Ah Li-ion battery  
 -PMSM controller



**NEW** CE

**MAX**  
**CQE12R/15R**  
 -Capacity 1.2t/1.5T  
 -Lifting Height 3000-5500mm  
 -24v/210Ah/280Ah Lead acid battery  
 -AC Controller



**MAX**  
**CQE15S**  
 -Capacity 1.5  
 -Lifting Height 3000-5500mm  
 -24v/280Ah Lead acid battery  
 -24V/205Ah Li-ion battery  
 -AC Controller



CE

**MAX**  
**JX0/JX0-30**  
 -Capacity 90/110/136 KG  
 -Lifting Height 3000mm  
 -24v/120Ah Lead acid battery  
 -24V/135Ah Li-ion battery  
 -DC Controller



CE

**MAX**  
**JX1**  
 -Capacity 363KG  
 -Lifting Height 3200-4800mm  
 -24v/120Ah/224Ah/270Ah Lead acid battery  
 -24V/205Ah Li-ion battery  
 -AC Controller



CE

**MAX**  
**CQD15SD**  
 -Capacity 1.5t  
 -Lifting Height 6500-10700mm  
 -48v/700Ah Lead acid battery  
 -48V/405Ah Li-ion battery  
 -AC Controller



**MAX**  
**CQD18s**  
 -Capacity 1.8t  
 -Lifting Height 3000-7500mm  
 -48v/300Ah Lead acid battery  
 -AC Controller



**MINI**  
**QDD10/15T**  
 -Capacity 1.0/1.5t  
 -Travel speed 5.0 km/h  
 -24V/20Ah Li-ion battery  
 -DC Controller



**MAX**  
**QDD30S/QDD45S**  
 -Capacity 3.0/4.5t  
 -Travel speed 7.0/5.0 km/h  
 -24V/210Ah/280Ah Lead acid battery  
 -AC Controller



**MAX**  
**CQD16L**  
 -Capacity 1.6t  
 -Lifting height 2700-8000mm  
 -48V/405Ah Li-ion battery  
 -AC Controller



**MAX**  
**CQD20L**  
 -Capacity 2.0t  
 -Lifting height 2700-12000mm  
 -48V/405Ah Li-ion battery  
 -AC Controller



CE

EP has earned a worldwide reputation for outstanding quality and innovation in the material handling industry with hundreds of patents awarded in the United States, China and Europe. EP has also received global recognition by winning the Red Dot Design Award and the iF Product Design Award.

EP offer a wide range of products to fulfil the individual need of every customer from occasional operations to multi-shift application in warehouse or distribution centers at high frequency level. EP Equipment commits to producing the right truck for each application



**EP HISTORY**



**90%**  
 COMPONENTS DESIGNED AND MANUFACTURED IN HOUSE



**#1**  
 CLASS III LEADING MANUFACTURER IN THE WORLD



**#1**  
 MARKET LEADER IN LITHIUM ION TECHNOLOGY

- 2007 Introduced EP Equipment. Officially entered the electric MHE industry.
- 2009 Acquired BigJoe Manufacturing & Expanded Distribution in USA.
- 2011 Opened EP-EU Office in Belgium & Expanded Distribution in Europe.
- 2013 10,000+ Class I / II / III Over 10,000 Units.
- 2015 Opened IMOW Industrial Ecommerce & opened Thailand Branch Company expanded distribution in Southeast Asia.
- 2017 Launched L1 Series Forklift Truck.
- 2019 Set Milestone of shipping over 100,000 Units.
- 2020 Launched EFL302, the first IC forklift replacement in the industry.
- 2022 Entering the digital age, establishing an industrial logistics 4.0 factory
- 2023 Production facility expansion to more than 670,000 square meters.
- Future Creating a new world of intelligent, efficient and labour-saving handling.



**CPCD20-35T8**



**SERIES**

3 SERIES  
(ECONOMY)

**CAPACITY**

2000-3500KG

**LIFT HEIGHT**

3000mm

**MAX LIFTING HEIGHT**

6000mm

**DIESEL, TYPE CPC**

mitsubishi/isuzu/gc/domestic  
MANUFACTURER

**GASOLINE, TYPE CPQ**

GCT, GK25

**DUAL FUEL, TYPE CPQY**

GCT, GK25

**EMISSION STANDARD**

EUR III

**TRANSMISSION**

POWERSHIFT

**CPCD15-35T8**



**SERIES**

8 SERIES  
(PROFESSIONAL)

**CAPACITY**

1500-3500KG

**LIFT HEIGHT**

3000mm

**MAX LIFTING HEIGHT**

6000mm

**DIESEL, TYPE CPC**

mitsubishi/isuzu/gc/domestic  
MANUFACTURER

**GASOLINE, TYPE CPQ**

GCT, GK25/21

**DUAL FUEL, TYPE CPQY**

GCT, GK25/21

**EMISSION STANDARD**

EUR V FOR 2-3.5t

**TRANSMISSION**

POWERSHIFT

**CPD50-100T8**



**SERIES**

8 SERIES  
(PROFESSIONAL)

**CAPACITY**

5000-10000KG

**LIFT HEIGHT**

3000mm

**MAX LIFTING HEIGHT**

6000mm

**DIESEL, TYPE CPC**

mitsubishi/isuzulcummins/cy/domestic  
MANUFACTURER

**GASOLINE, TYPE CPQ**

N/A

**DUAL FUEL, TYPE CPQY**

N/A

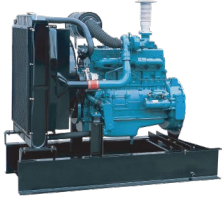
**EMISSION STANDARD**

EUR III

**TRANSMISSION**

POWERSHIFT

We have a wide range of equipment especially suited to any application you require. Contact us to tailor your needs!



Engine & Gensets

SDE supplies high-performance diesel and gas engines for reliable power generation. Our engines range from 10kVA to 1200kVA, meeting diverse energy needs. We also provide durable pump engines from 50Hp to 750Hp for various industrial applications. Trusted for quality, efficiency, and robust performance in demanding environments. SDE Equipment is your partner for power and pump engine solutions.

**SDE Equipment supplies:**

- Generator Engines ranging from 40 KVA prime – 2,500 KVA prime.
- Pump Engines ranging from 100 hp – 850 hp.

- Fire Pump Engines ranging from 100 hp – 850 hp .
- Gas Powered generator engines ranging from 145 KVA prime – 565 KVA prime.
- All original parts for all HDI
- Hyundai (Doosan) Generators, Water Pumps, Fire Pumps & Gas Generator engines.



Yangdong specialises in diesel generator engines, ranging from 10KVA prime to 120KVA prime. The engines are of the highest quality, performance & reliability.

The designers at Mahindra have taken technology next level. They have made a dramatic leap in the Backhoe Loader category by creating the new EarthMaster VX. With 55 kW (74 HP), a CRDI Mahindra engine, best-in-class fuel efficiency, and optimal backhoe performance.

**BEST-IN-CLASS FUEL EFFICIENCY**

WITH THE PROVEN MAHINDRA DITEC ENGINE Mahindra has taken its learnings from tractor engines, to bring its fuel efficiency down incredible. 10%\*\* more savings with Mahindra's Engine 66.9 kW (91 HP) Turbo charged intercooled diesel engine. Fuel efficient, compact 4 cylinder, 3532cc engine. BS III Emission norms compliant.



**ABOUT US - SDE Equipment Trading LLC** is a part of The Abduljawad Group of Companies which is a leading Saudi Arabian family-owned multi-segment business group with a diversified portfolio of businesses which deal in Power generation equipment, Heavy equipment, Automotive dealerships, Lease financing, and Residential property development. Abduljawad Group operates through several entities in Saudi Arabia, UAE and USA, with Tawad Holding Company as the primary holding company for the Group in Saudi Arabia and UAE.



SDE Equipment Trading LLC and its larger Saudi Arabian sister company **Saudi Diesel Equipment Company (SDEC)** are wholly owned subsidiaries of Tawad Holding Company. SDEC was established in Saudi Arabia in 1978 and SDE Equipment Trading LLC was established in UAE in 2014.

Over the years, SDEC's portfolio has expanded to include manufacturing and rental of power generation equipment, trading in construction, lifting & concrete equipment, and related after sales activities. SDEC has established itself as a prominent player in the equipment market in Saudi Arabia. SDE Equipment Trading LLC leverages on capabilities and support of SDEC to provide highest quality of equipment and after sales services to customers in the UAE market.

**CONTACT US: Office +971 (0) 6 566 0303 / Fax +971 (0) 6 577 8826 / [www.sdeequipment.com](http://www.sdeequipment.com)  
Emirates Industrial City, Sharjah, United Arab Emirates**

**About S D E Equipment Trading L.L.C**

**SDE Equipment Trading LLC (SDE)** proudly holds the UAE distribution rights for the Mahindra Construction Equipment along with this SDE is also the distributor for HDI Hyundai Infracore range of diesel generator engines, pump engines, and off-highway diesel engines as well as an EP dealer for the UAE.

**Performance Par Excellence  
most versatile Backhoe Loader**

**Available with HVAC cabin and Optional Extendable Dipper.**



**LOW MAINTENANCE COST, MORE SAVINGS**

With better technology and design enhancements, Mahindra has been able to lower lubricant, refilling requirement with extended service intervals, thus reducing the overall maintenance cost, below hours change interval

- \* Hydraulic Oil: 50 litres with 2000 hrs
- \* Rear Axle Oil: 17.10 litres with 1500 hrs
- \* Front Axle Oil: 9.10 litres with 1500 hrs
- \* Engine Oil: 13 litres with 500 hrs \*Transmission Oil: 12 litres with 1000 hrs

**BEST-IN-CLASS FUEL EFFICIENCY  
WITH THE PROVEN  
MAHINDRA DITEC ENGINE**

Mahindra has taken its learnings from tractor engines, to bring its fuel efficiency down incredible. 10%\*\* more savings with Mahindra's engine 66.9 kW (91 HP) Turbocharged intercooled diesel engine Fuel efficient, compact 4 cylinder, 3532cc engine BS III Emission norms compliant

## SPECIFICATION SHEET

### Engine

Model	4915-IA-CEV
Emission Standard	BSIII CEV / EU Stage III A
Type	Turbocharged Intercooled
No. of Cylinders	4
Displacement	3532 cc
Gross Horse Power	91 HP [66.9 kW] @ 2200 RPM
Max Gross Torque	345 Nm ± 5% @ 1400 - 1600 RPM

### Hydraulics

System Type and Pressure	Open Centre 250 Bars [3675 PSI]
Pump	Fixed Displacement, Gear Pump with 117 Litres @ 2250 RPM
Control Valves [Backhoe and Loader]	Sectional Valves [Sandwich Type, Individually Replaceable]

### Transmission

**Type:** Four Speed [4 Forward, 4 Reverse], Four Wheel Drive [4WD], Synchro Shuttle Transmission with Electrically Operated Reversing Shuttle and Torque Converter having Stall Ratio of 2.64:1.

### Axles

**Rear Axle:** Heavy mounted drive axle, with outbound planetary final drives, driven by short drive shaft.

**Front Axle: Four Wheel Drive (4WD)**

Centrally pivoted, driven type balanced axle, with total oscillation of  $16^\circ$ , with remote greasing facility for the main pin.

### Brakes

**Service Brakes:** Hydraulically actuated, self adjusting, maintenance free, oil immersed multi-disc, on the rear axle, operated by independent foot pedals, joined together for normal operation.

**Parking Brakes:** Hand operated, mechanically actuated, caliper type brake system (integral with system)

### Electricals

Dust-proof switches, ignition controls for engine start and stop, horn and reverse alarm, water and dust-proof electrical connectors. Electric: 12V, Battery: 100 Ah, Alternator: 90 Ampere

### cabin

ROPS, FOPS compliant ergonomically designed HVAC cabin with contemporary styling, excellent operator comfort. Cabin frame built with sturdy tubular sections and protected with CED technology for longer rust protection. Fully adjustable premium operator seat with safety belt.

### Steering

Front wheel hydrostatic power steering with priority function and pressure relief setting of 145 bar.

### Operator Information and Entertainment System

Cluster with Water and Dust-proof connectors (IP-67) with Speedometer, Turn and Head Light Signals. Engine Temperature, Oil, Fuel, RPM gauge.

### Gear Speed (Max with IT Tyres)

1st F/R	5.33 km/hr
2nd F/R	8.58 km/hr
3rd F/R	18.83 km/hr
4th F/R	37.66 km/hr

### Service Capacities

### Service Capacities

### Service Replacement Capacities

	Service Capacities	Service Replacement Capacities
Hydraulic Oil Capacity	102 Litres	50 Litres
Fuel Tank	120 Litres	120 Litres
Engine Coolant	Ready Mix [17 Litres]	17 Litres
Engine Oil	10.7 Litres	9.5 Litres
Transmission	20 Litres	12 Litres
Rear Axle	17.5 Litres	17.1 Litres
Front Axle	8.5 Litres	7.6 Litres

### Types

### Standard (Industrial/Heavy Duty)

Front	\$12.5/80 - 18 \ 12PR\$
Rear	\$1ND \ 16.9 - 28 \ 12PR \ HD, 14.00 - 25 \ 12PR\$

Mahindra EarthMaster VX90 4WD is backed with a 1 year Unlimited Hours warranty. So you can enjoy peace of mind.



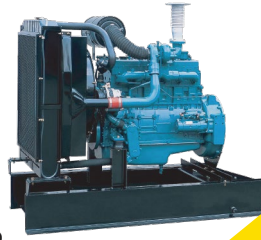
Backhoe Static Dimensions		VX90 4WD IT	VX90 4WD IT	
			(With Extendable Dipper)	
			Dipper Closed	Dipper open
AA	Overall Length	5864	-	-
AB	Wheel Base	2175	-	-
AE	Height to Top of Cab	2950	-	-
AF	Overall Height	3665	-	-
AG	Track Width Rear	1720	-	-
AH	Track Width Front (4WD)	1920	-	-
AJ	Width Over Bucker	2404	-	-
AK	Max. Length From Front Axie Center (Carry Position)	1836	-	-
AL	Max. Length From Rear Axie Center (Carry Position)	3207	3578	-
	Width During Transport Condition	2422	2907	-
	Max. Length ( carry position)	7218	7589	-
Backhoe Performance				
A	Max. Dig Depth*	4350 / 4959*	4542 / 5097*	5432/5987*
B	Reach at ground level to Wheel Center	7092	7268	8116
C	Reach at ground level to slew center	5761	5992	6776
D	Reach at full height to slew center	2774	2915	3611
E	Side Reach to Enter of Machine	6291	6453	7301
F	Max. Working Height*	5474 / 6043*	5549 / 6295*	6104 / 6850*
G	Max. Load over Height*	3606 / 4131*	3703 / 4335*	4257 / 4889*
H	King post Travel	1060	1060	
Y	Bucket terout Force	5828 kg	5297 kg	5297 kg
Z	Dipper Teraout Force	3182 kg	3014 kg	2330 kg
	Lift Capacity to bucket pivot at full reach W/o bucket	1449 kg	1255 kg	850 kg
	Bucket ( standard)	0.30 CuM		
				<b>0.18 CuM</b>
Loader Performance				
M	Dump Height	2715	-	-
N	Load Over Height	3267	-	-
O	Pin Height	3477	-	-
P	Pin forward Reach	220	-	-
Q	Reach at Ground	1350	-	-
R	Max. Reach at Full Height	1100	-	-
S	Reach at full Height - Bucket Dump	706	-	-
T	Below Ground Level Dig Depth	107	-	-
U	Roll back Angle at ground	43	-	-
V	Dump angle	44	-	-
W	Roll Back ANgle at Max. Lift	48	-	-
X	Overall Height Bucket Raised	4415	-	-
1	Bucket Breakout Force	6243 kg	-	-
2	Shovel	11 CuM	-	-
	Lift Capacity at MAX. height	3428 kg	-	-
	Payload	1800 kg	-	-
Turning Radius				
	inner Wheel Braked Outside Bucket / Wheels	4494/3083	-	-
	Inner Wheel Not Braked Outside Bucket / Wheels	5150/3825	-	-
	Net Weight of Machine (Std. Bucket)	7592 kg	-	-
	*SAE condition / Special condition			<b>7901 kg</b>

**SDE supplies** high-performance **diesel** and gas **engines** for reliable power generation. Our engines range from 10kVA to 1200kVA, meeting diverse energy needs. We also provide durable **pump engines** from 50Hp to 750Hp for various industrial applications. Trusted for quality, efficiency, and robust performance in demanding environments. SDE Equipment is your partner for power and pump engine solutions.



SDE Equipment supplies:

- Generator Engines ranging from 40 KVA prime – 2,500 KVA prime. Pump Engines ranging from 100 hp – 850 hp.
- Fire Pump Engines ranging from 100 hp – 850 hp .
- Gas Powered generator engines ranging from 145 KVA prime – 565 KVA prime.
- All original parts for all HDI
- Hyundai (Doosan) Generators, Water Pumps,
- Fire Pumps & Gas Generator engines.



SDE has a wide range of EP diesel, electric forklifts and material handling solutions suited for every industry. So, whether it is a minimum tonnage electric; 3 Wheel Forklift or a heavy -duty Diesel Forklift, we have something to suit your needs and, of course, your budget. We are a trusted provider of sales and after-sales services for forklifts, material handling equipment and Backhoe Loaders and diesel engines, across the UAE.

Yangdong specialises in diesel generator engines, ranging from 10KVA prime to 120KVA prime. The engines are of the highest quality, performance & reliability.



Attachments make a machine more versatile and are to be found on forklifts. like bale clamps, block clamps, double pallet handlers, carton clamps, fertilizer pushers, foam rubber clamps, hinged forks, log holders, olecranon drum clamps, paper roll clamps, push pull clamps etc.

**SDE offers a wide range of Lifting Equipment.**



**ABOUT US - SDE Equipment Trading LLC** is a part of The Abduljawad Group of Companies which is a leading Saudi Arabian family-owned multi-segment business group with a diversified portfolio of businesses which deal in Power generation equipment, Heavy equipment, Automotive dealerships, Lease financing, and Residential property development. Abduljawad Group operates through several entities in Saudi Arabia, UAE and USA, with Tawad Holding Company as the primary holding company for the Group in Saudi Arabia and UAE.



**SDE Equipment Trading LLC** and its larger Saudi Arabian sister company **Saudi Diesel Equipment Company (SDEC)** are wholly owned subsidiaries of Tawad Holding Company. SDEC was established in Saudi Arabia in 1978 and SDE Equipment Trading LLC was established in UAE in 2014.

Over the years, SDEC's portfolio has expanded to include manufacturing and rental of power generation equipment, trading in construction, lifting & concrete equipment, and related after sales activities. SDEC has established itself as a prominent player in the equipment market in Saudi Arabia. SDE Equipment Trading LLC leverages on capabilities and support of SDEC to provide highest quality of equipment and after sales services to customers in the UAE market.

**CONTACT US: Office +971 (0) 6 566 0303 / Fax +971 (0) 6 577 8826 / [www.sdeequipment.com](http://www.sdeequipment.com)  
Emirates Industrial City, Sharjah, United Arab Emirates**