



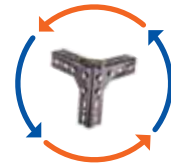
RACKSTORE

EQUIPMENT AND SHELVES FIXING TRD. L.L.C

راك ستور لتجارة معدات المحطات

RACKSTORE

EQUIPMENT & SHELVES FIXING TRADING L.L.C



TOTAL STORAGE SOLUTION

**STORAGE PRODUCTS & SOLUTIONS FOR
EVERY ENVIRONMENT**

Tel : 06 5290911, Mob: +971 56 9705953, Mob: +971 52 9328434, Industrial Area Jurf - Ajman-U.A.E
Email: rackstore2022@gmail.com, inforackstore@gmail.com



Who are we?

It Gives us Great Pleasure to Introduce RACKSTORE EQUIPMENT & SHELVES FIXING TRADING Since 2017.

We are one of the leading manufacturer of storage equipments in UAE. It all started for Warehouse solutions which provide a one stop shop for clients designing a new distribution facility and/or Re-Engineering an exiting Warehouse. RACK STORE provides clients expertise advise in design, supply and installayion of storage system.

Our aim at RACK STORE is to give impotance to our valued customers by offering the best products for their requirements exactly. With more than 08 years backstore

experienced staff RACK STORE is capable of providing solutions for Warehouse Racking System like Pallet Racking, Drive-in Racking, Long Span Racking, Boltfree Shelving. Slotted Angle Shelving, Mezzanine floors etc.

Please call us for all your storage needs to submit our best and most economical proposals along with the complete technical details and drawing.



Pallet Racking

Pallet racking is the most widely used storage system for all palletized and non palletized loads. Single or double sided runs of pallet racking are separated by aisles that can be sized to suit the customers forklift trucks.

- High accessibility to all pallets.
- Designed to suit all load sizes and available space.
- Use installed forklift trucks.
- Easily installed and repositinoed.
- High occupancy rates.



Medium Duty / Long Span Shelving

Long span shelving is a multipurpose, fully adjustable shelving system. It maximizes space both vertically and horizontally. The system is easily assembled of streamlined appearance with the feature of wood, steel or wire mesh shelving panels. The standard long span end frame can be used for the simplest bay design providing an inexpensive fast build storage facility or equally it may be used within much larger schemes including Multi-tier structures.



Multi-Tire Shelving

Designed to ensure the correct balance between storage capacity and operational efficiency, the system can be configured to accommodate a wide range of product types, Utilizing the full height of storage facility. The Multi-tire shelving systems can effectively double the amount of storage capacity of a floor area.



Drive-In Racking

A solution based on continuous blocks of racking which allows good use of the volume available. Pallets are loaded on longitudinal runners. This system is particularly applicable when space is expensive and a limited product range.

Cantilever Racking

Ideal solution for long irregular large loads.

- Extensions
- Tubes & Timber
- Furniture
- Special size pallets etc.

This system is especially suitable for the storage of long loads but nevertheless is easily adapted to any requirements. When high density storage is required with a limited number of load varieties combined with modest retrieval then cantilever racking is the solution.

Slotted Angle Shelving

Slotted angle shelving designed to provide an economical solution for manual loading. The system can be quickly constructed without any special tools and in a minutes. the height of each shelf can be easily adjusted. The system is extremely versatile and can be adapted to fit any space.





Mobile Shelving

Large volume storage, optimum space utilization. The system provides high density storage requiring only one moving aisle which eliminates the space that would otherwise be taken up by permanent passageways between conventional static shelving.

This arrangement can increase up to efficient way in storage and retrieval of information, whether in the form of computer disks, cassettes, video tapes, books and files etc.

Bolt Free Shelving

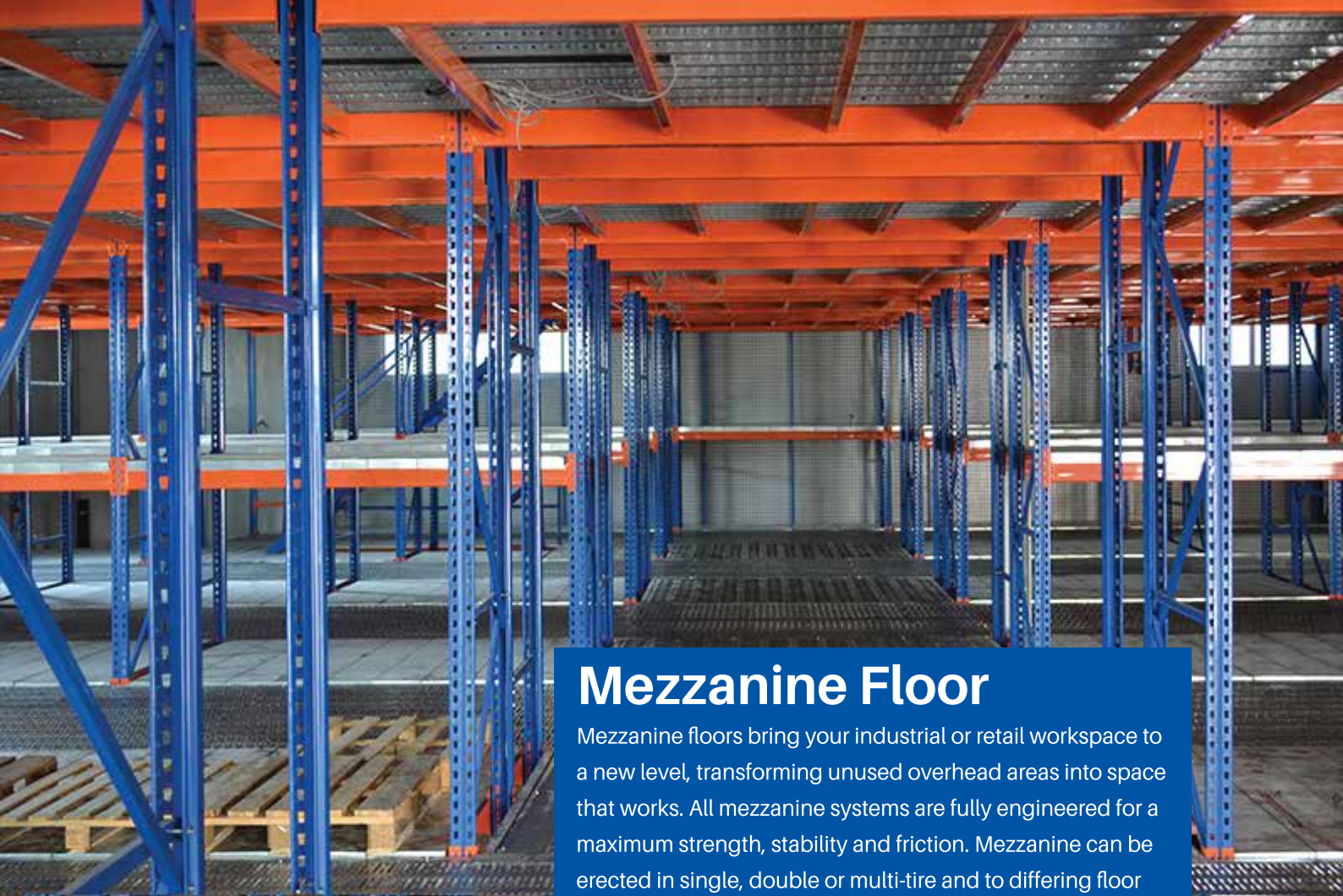
Bolt free shelving systems provide a flexible, modular hand loaded shelving systems.

The bolt free lock together, construction can be quickly and easily installed.

- Cost effective
- Simple
- Strong
- Safe and Durable Shelving

Solid Shelves can support up to 80kg uniformly distributed loads. Economy shelving bays come in standard width, height and depth. Assembles easily and quickly a shelving system within minutes!





Mezzanine Floor

Mezzanine floors bring your industrial or retail workspace to a new level, transforming unused overhead areas into space that works. All mezzanine systems are fully engineered for a maximum strength, stability and friction. Mezzanine can be erected in single, double or multi-tire and to differing floor heights which makes them suitable for manufacturing waste housing, virtually any type of production..



Heavy Duty Racking



Heavy Duty Tyre Racking



Drive-In Racking



Supermarket Shelving



Two Tire Racking



Slotted Angle Shelving



Bolt Free Shelving



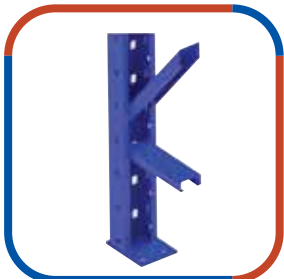
Meidium Duty Racking



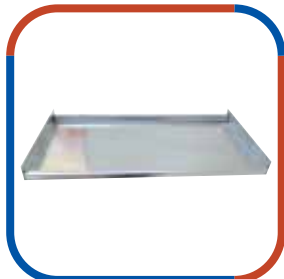
Mobile Shelving



ACCESSOIRES



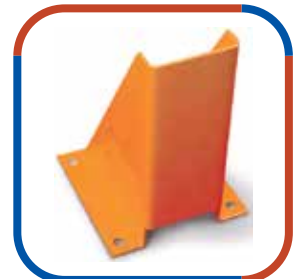
Heavy Duty Upright



G.I Decking Panel



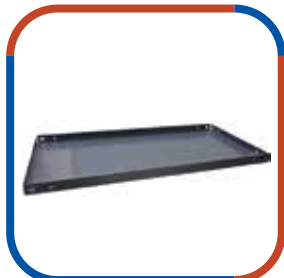
Heavy Duty Beam



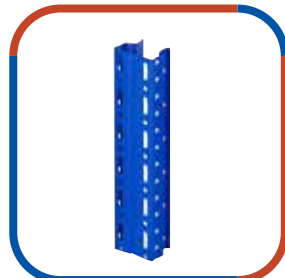
Column Guard



Slotted Angle



Slotted Angle Shelf



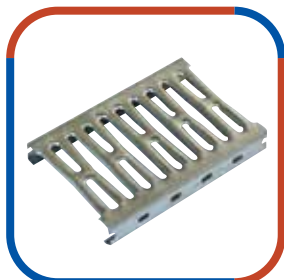
H/D Upright Frame



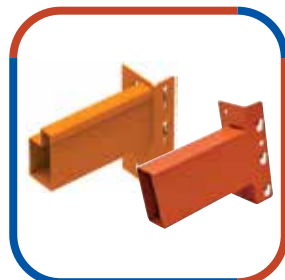
Boltfree Shelf



Medium Duty Upright



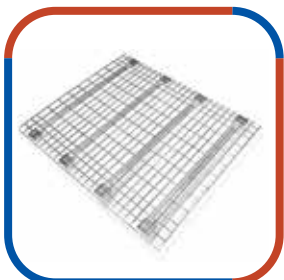
Open Steel Plank



Medium Duty Beam



Support Bar



Wire Mesh Decking



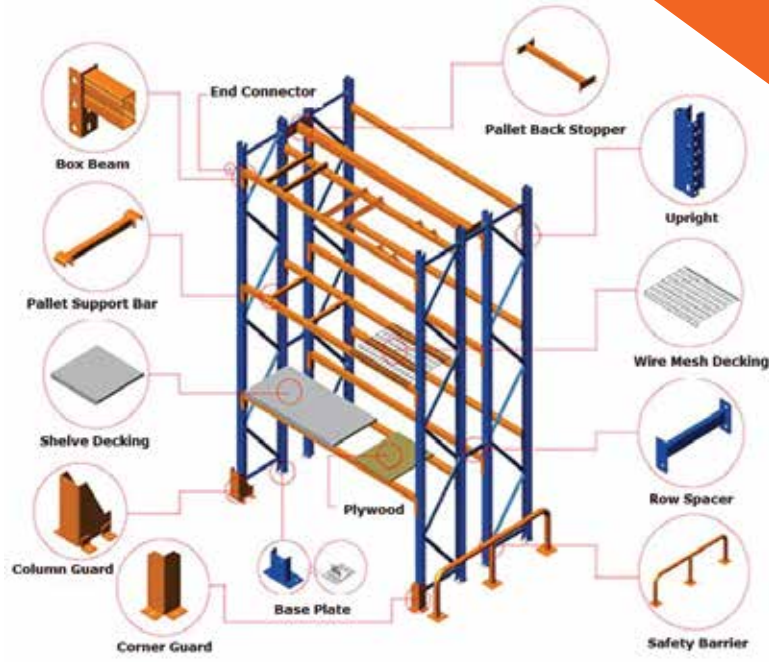
Safety-Guard



Staircase



Nuts & Bolts



- 1) Upright
- 2) Beam
- 3) Horizontal Bracing
- 4) Diagonal Bracing
- 5) Base Plate
- 6) Row Spacer
- 7) Mesh Decking Panel
- 8) Steel Decking Panel
- 9) Plywood
- 10) Safety Barrier
- 11) Pallet Support Bar
- 12) Column Guard
- 13) Corner Guard
- 14) Drum Chock
- 15) End Connector



راك ستور لتجارة معدات المحطات
RACKSTORE
 EQUIPMENT & SHELVES FIXING TRADING L.L.C

Tel : 06 5290911, Mob: +971 56 9705953, Mob: +971 52 9328434, Industrial Area Jurf – Ajman–U.A.E
 Email: rackstore2022@gmail.com, inforackstore@gmail.com