



**Perfect Acoustics**  
All Noise Solutions

[www.perfectacousticsuae.com](http://www.perfectacousticsuae.com)



## ABOUT US

Perfect Acoustic is a leading firm in acoustics, noise control, vibration control in the MENA region we offer all acoustic products for commercial, educational, office spaces, healthcare, industrial, home theatre, environmental, house of worship, recording studios and other residential applications. It is utilising the most advanced equipment and staff's having experience in the field to resolve complex noise control problems.

We also utilize our Research Department to develop customized products to satisfy your every need. Perfect Acoustic has the most advanced software tools available to accurately simulate the finalized acoustic result. Perfect Acoustic is Committed to personal attention to your project. At Perfect Acoustics, we will go the extra step to solving your space and noise control concerns.

# ACOUSTIC STRETCHED FABRIC WALL PANEL

Traditional architectural techniques are unable to give acoustical control of sound in this time of digitally enhanced surround sound. Surfaces may need to be acoustically treated and covered in fabric as a decorative finish in order to address the twin issues of reverberation and reflection. As important as quality ventilation systems are for improving one's ability to hear, acoustically treated walls are now also necessary for transmitting sound.

Our Stretch Wall System, which is configured and installed on site at the workplace, is an almost seamless acoustic panel system. Stretched over an acoustical substrate, any number of available fabrics are nestled into the high-impact, extruded PVC track. With the help of this track, we can quickly install around existing barriers in the room and cover enormous areas of space while creating curves and shapes.

## APPLICATION

- Office & Meeting Rooms
- Auditorium & Conference Room
- Recording & Broadcasting Studios
- House of Worship
- Multi-Purpose rooms & Home theatres
- Audiology Room, Health care unit
- Phone booth, Living Room Area
- Hospital

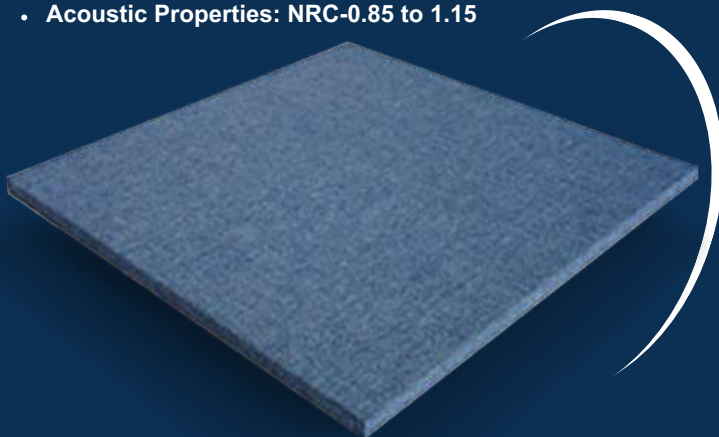


PERFORMANCE AND SOUND ABSORPTION (Hz)								
Thickness	125	250	500	1000	2000	4000	$\alpha_w$	NRC
1" (25mm)	0.07	0.32	0.81	1.08	1.11	1.00	0.60	0.85
2" (50mm)	0.32	0.84	1.08	1.08	1.08	1.01	1.00	1.00

• NRC - Noise Reduction Coefficient •  $\alpha_w$  - Sound absorption coefficient

## TECHNICAL

- Core Density: 96kg/m3 to 120kg/m3
- Acoustic insulation size: select from regular or bespoke size up to 4'x8'
- Thickness: 25mm, 50mm
- Finish: Camira Cara Fabric
- Edge details: Square/ Bevel
- Facing: Fabric
- Colours: Wide range of colours Camira Cara Fabric
- Fire Rating: Class A
- Acoustic Properties: NRC-0.85 to 1.15



## FEATURES

- No Wall Preparation
- Covers Any Size Wall
- No Lath
- No Staples
- No Welting/Gimp
- Excellent Acoustical Control Finish
- Flexible Choice of Fabrics
- Choice of Installer or Do It Yourself
- Removable & Replaceable Fabric
- Unlimited Design Possibilities



# ACOUSTIC WOOD WOOL PANELS

Perfect Acoustic Wood wool fibreboard is an environmentally friendly, economical and efficient wood panelling for walls, which can be widely used in walls and ceilings. The woven nature of the reinforced wood fibre core makes it an effective wood fibre acoustic sheet. Wood wool panelling for walls interior is made of wood wool, cement and water. The natural ingredients of wood panelling for walls collectively provide many functional properties, which also allow a variety of coating applications without affecting the acoustic performance. You can use white or natural colours to complement the decoration of any room, or you can paint in any colour you want on site.



## TECHNICAL

- Core material: wood fibre and bonded materials
- Size: 2440 x 1220mm, 600mm x 1200mm
- Thickness: 20mm, and 25mm
- Edge: square
- Finish: Natural Wood
- Colour: transparent or white primer, custom paint colour
- NRC: up to 0.85
- Fire rating: According to the standard
- Density: 400/kg/m<sup>3</sup>
- Weight: 7-20kg/m<sup>2</sup>



## APPLICATION

- Office
- Hotels
- Shopping Malls
- Airports
- Retails
- Sports Hall
- Auditoriums



## FEATURES

- Tastefully satisfying
- High sound Absorbing Execution
- Accessible with various edge and tones
- Heat proof
- Climate Amicable
- Easily cleanable and can be vacuumed
- Simple to Apply
- Low-emission
- Humidity Regulation

# ACOUSTIC POLYESTER PANELS

Polyester acoustic board is a profoundly tough engrossing material made of reused polyester. Polyester acoustic board is broadly utilized in Theatres, Home theatres, Amphitheatres, Show corridors, Gyms, Business spaces, for example, Gathering rooms, Meeting rooms, Normal regions, Recording Studios, Home general media rooms and so on.

When Contrasted with the other Acoustic Boards or Froths, Polyester Acoustic boards are lighter, simple to deal with and simple to introduce. These boards likewise have a Pre-completed surface when contrasted with other Acoustic Boards. They are accessible in various varieties and can be cut into any shape conceivable. In this way, making it a strongly suggested Acoustic Board by planners and inside originators

## FEATURES

- Free of formaldehyde
- No binding agent
- No risk of skin irritation
- No risk of respiratory illness
- 60% PET recycled ingredients
- Various polyester fibre acoustic wall panels colours
- NO smell and dust free
- Class A fire rating
- 100% recyclable



## APPLICATION

- Hospitality
- Home Theaters
- Recording Studios
- Public Spaces
- Sports Facilities
- Healthcare
- Theater and Performing Arts
- Retail Environments
- Transportation Facilities
- Industrial Settings
- Fitness Studios

## PERFORMANCE

Thickness	125	250	500	1000	2000	4000	NRC
1/2"	0.00	0.07	0.25	0.59	0.79	0.96	0.45
1"	0.06	0.34	0.68	0.93	0.98	0.97	0.75
1-1/2"	0.14	0.61	0.82	1.04	1.00	0.93	0.85

## TECHNICAL

- Material: 100% polyester
- Acoustic performance: NRC > 0.8
- Flammability: class A per ASTM E84
- Standard thickness: 9 mm, 12 mm & 24 mm
- Standard size of raw materials: 1220mm x 2420mm
- Shapes: rectangles, squares, 3D shapes or other custom shapes.
- Colours: white, red, blue, etc...



# PIPE ACOUSTIC LAGGING

Perfect acoustic lagging and Wraps are made to block noise that travels through the pipe's walls and ceiling as well as to boost the cavity's ability to absorb sound. A loaded vinyl noise barrier with an aluminium foil facing reinforced with scrim is attached to a 1 " sound absorbent decoupler in order to significantly reduce radiated noise. Our pipe and duct cover performs exceptionally well in both thermal and acoustical aspects.

A reinforced aluminium foil facing, mass loaded, flexible vinyl noise barrier that is adhered to a decoupling layer makes up our high-performance composite acoustic pipe lagging product. The product was designed to lessen noise leakage from ducting, fan housings, pipes, valves, and other mechanical components in commercial, industrial, and residential structures. Perfect acoustic product for duct and pipe lagging applications.



## TECHNICAL

- Material: Convuluted PU foam bonded to a flexible MLV-Mass loaded vinyl barrier with pure aluminium foil.
- Weight: 5kg/m3 +-5%
- Width: 1350mm
- Length: 2.5m and 5m
- Thickness: 27mm



## FEATURES

- A high-performance sound sheathing material.
- Comprises of a mass stacked adaptable vinyl clung to a foil looking with a decoupling layer.
- Flexible to optimise performance.



## USAGE

- Commercial building- offices
- Shopping mall
- Hotels
- Residential Apartments
- Mixed-use Buildings
- Multi-level unit housings
- Occupied spaces
- Any pipes/Ducts that requires breakout sound reduction



## PERFORMANCE

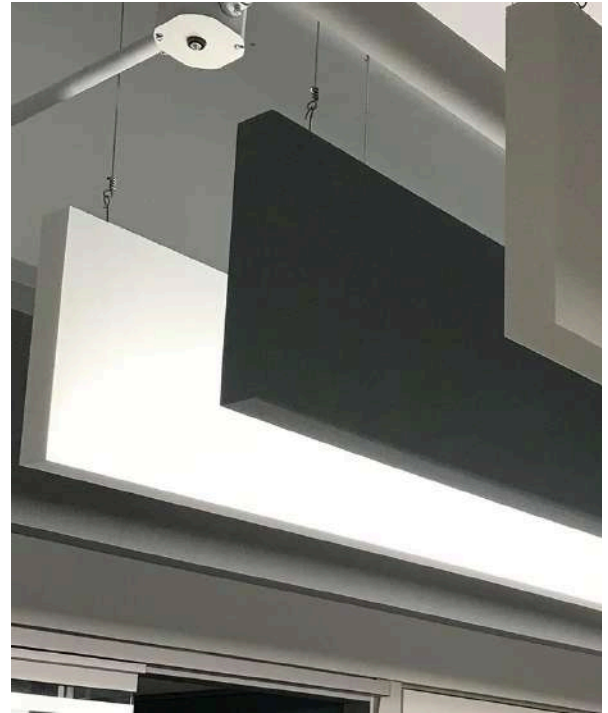
Freq(Hz)	125	250	500	1000	2000	4000	STC	RW
Decibles(DB)	10.1	15.3	17.1	22.9	32.4	41.3	28	25

# ACOUSTIC CEILING Baffles

Perfect Acoustic Ceiling Baffles reduce reverberation time, lower ambient noise levels, and improve communication in a variety of applications. Baffles are economical alternatives for both large- and small-scale spaces such as gymnasiums, ice arenas, swimming pools, and event spaces of all sort.



Ceiling treatments are a great place to start. Reverberation may frequently provide the appearance of annoying noise in the background. This is mostly caused by the overall volume in the room; therefore, it can lead to ear fatigue and lower concentration for the listener. Regardless of the space, adding sound absorption to your room will make a noticeable difference instantly. Many tones and wood tones to accomplish a redid impact Exclusively Substitution Board



## FEATURES

- Allows more space on ceiling for services.
- Enables natural light to come through.
- Allows easy access to services located on ceiling.
- Greater area of absorbing material can be used, particularly for high ceiling.
- Can be easily installed on a T- section suspended ceiling grid or individually suspended.
- Can be of different colors to suit theme.

## PERFORMANCE

Thickness	125	250	500	1000	2000	4000	NRC
25mm	0.14	0.27	0.80	1.11	1.14	1.14	0.85
50mm	0.22	0.81	1.24	1.30	1.21	1.16	1.15

## TECHNICAL

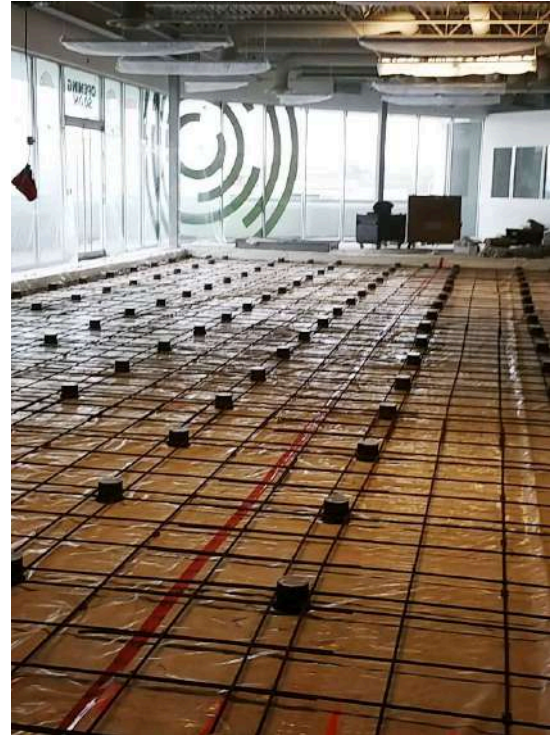
- **Sizes:** Choose from standard sizes or custom sizes up to 4'x8'
- **Thickness:** 1" & 2"
- **Finish:** Camira Cara Fabric
- **Density:** 96kg/m<sup>3</sup> to 120kg/m<sup>3</sup>
- **Edge Detail:** Options for Square, Bevel, Radius, Meter
- **Edge details** (Natural or Chemically Hardened)
- **Fire Rating:** Class A
- **NRC:** 1"(0.85) 2"(1.15)



# ACOUSTIC FLOATING FLOOR SYSTEM

Floor isolation systems are incorporated into building design to minimize floor impact noise and airborne sound transmissions. Additional designed floor slab is supported by resilient mounts installed on the structural main slab. The design of an effective isolation system is dependent on several factors including:

- Required noise criteria to achieve
- Mass & Stiffness of the structural slab
- Isolation mounts natural frequency and damping characteristics
- Space or Air gap
- Design of the floated slab
- Control of sound flanking paths



Creating air gap between the main and floated floors while decoupling the two floors with the appropriate resilient mount effectively reduce noise transmission. Airborne and impact noise transmissions are greatly reduced between the room incorporating the floating floor system and other floors of the building. PERFECT ACOUSTICS floating floor systems offers the largest variety of isolation mounts to fit specific applications.



## FEATURES

- Greater load capacity at a lower cost
- Can be designed for any load range
- Easy to create 1", 2", 3", and 4" airspaces
- Fast, simple, inexpensive installation
- Factory installation and supervision available
- Natural Frequency constant over a wide load range

## APPLICATION

- Performing arts facilities
- Concert halls, Bowling alleys
- Nightclub dance floors
- Broadcasting and recording studios
- Conference rooms, Gymnasiums
- Gymnasiums, Home theatres
- Hospital operating theatres
- Plant rooms, Rooftop mechanical equipment

## PERFORMANCE

Freq(Hz)	63	125	250	500	1000	2000	4000	8000	STC
8" Concrete Slab Reduction	36	37	41	45	49	53	57	61	49
Decibels(dB) By Floating space	11	12	13	14	15	16	16	16	14

# ACOUSTIC FOAM PANELS

Acoustic Foam is a very versatile material that is both a cost effective and attractive solution to echo problems. Studio foam is important so a recording engineer can get a clean track that isn't cluttered with room noise. Acoustic foam panels placed on the walls and ceiling of a studio vocal booth make it so the recording is very clear and just the voice with no extra sounds. More and more these days we are having online video conferences both from the office and home office. Sound foam can help the room sounds and make your meetings much more pleasant and effective.

Acoustic foam is great for absorbing sound when there is a lot of reverberation and echo in a room that makes it difficult to hear, or in a recording studio where it's important to have high quality sounds. This transfers low-grade heat, transforming the sound energy into kinetic energy and dispersing the room's reflection echoes. Foams are available in a wide variety of sizes, forms, and fire ratings (class B and class A). For soundproof panels used in public spaces like hospitals, schools, and churches, melamine foam should be used because it is class A fire authorized

## PERFORMANCE

Thickness	125Hz	250Hz	500Hz	1kHz	2kHz	4kHz	NRC
25mm	0.05	0.21	0.50	0.71	0.84	0.8	0.4
50mm	0.07	0.30	0.70	0.95	1.00	1.10	0.6



### PYRAMID

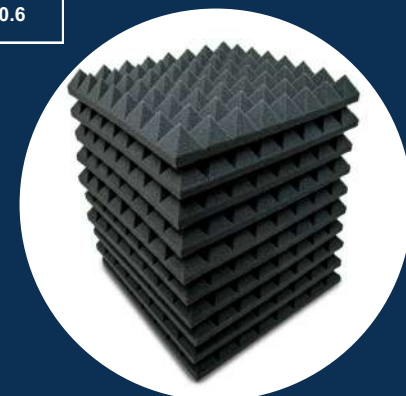
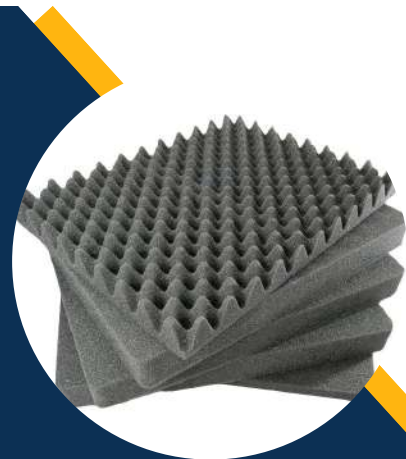
These Panels Absorb Up to 80% of your echo These are 2'x2" square foam panels made of class A fire rated melamine foam. The panels are available in 2", 3" or 4" thickness

## FEATURES

- Recycled Materials
- Non-Flammable in Category A (Per ASTM E-84)
- Small size
- Ease of Installation (adhesively applied)
- Impact-resistant and robust
- Cheap fiberglass devoid of volatile organic chemicals like formaldehyde
- Outstanding Acoustic Absorption

## APPLICATION

- Recording Studios
- School and classrooms
- Home Theaters
- Restaurants and cafes
- Offices



### EGG CRATE

Eggcrate 2'x4' acoustic foam sound panels made from class A fire rated melamine foam. Available in light Gray or pure White, these foam panels are ideal for controlling excessive noise levels in public buildings including schools, churches, hospitals, office and more

# ACOUSTIC METAL NOISE BARRIER/WALL PANELS

Perfect Acoustics Metal Panels are a stylish, modular product that combines maximum noise absorption and durability. To immediately lower noise levels and regulate reverberation, our practical perforated panels may be installed anywhere on walls and ceilings.

One of the most adaptable sound absorbers on the market, units are durable enough for use in industrial settings while yet looking good enough to be installed in offices, auditoriums, and gyms. These panels are a very cost-effective solution to your problem because the majority of issues can be resolved with as little as 25 - 30% coverage of the reflective surface thanks to their great noise reduction qualities.



## APPLICATION

- Auditoriums, Band and Music Rooms
- Gymnasium & Pools, Correctional Facilities
- Police and Fire Facilities, Shooting Ranges
- Subway Stations and Transit Facilities
- Houses of Worship
- Broadcast, Theatres, and Classroom Environments
- Outdoor Equipment Screens



## PERFORMANCE

Freq	63	125	250	500	1000	2000	4000	8000	NRC
100mm	0.18	0.75	1.02	1.07	0.98	0.89	0.80	0.86	1.05
50mm	0.10	0.27	0.60	1.14	1.06	1.03	1.03	1.06	0.95

## TECHNICAL

- All panels have a perforated metal noise barrier shell that is fully formed and attractively strong.
- A range of mounting techniques.
- Shape: Rectangle or Square
- High-Performance noise absorption properties for air-dry enamel paint systems intended for industrial use (NRC -0.90 to 1.05)
- Available in 50mm and 100mm thicknesses are panels.
- The width of standard panels is 500 mm.
- Individual panels are offered in lengths up to minimum 60cm and maximum 4 Meter.
- Components made of stainless steel, aluminium, galvanized steel, and corrosion-resistant electro-galvanized steel.
- Finish: RAL Power coated.
- Available in thicknesses ranging from 14 gauge to 22 gauge.
- Chemically cured exterior and marine duty epoxy paint system

## FEATURES

- All panels feature sturdy attractive fully formed perforated metal panel shell.
- Panels available in 2" and 4" thickness.
- Standard panel width is 30"
- Individual panels available up to 12' long.
- components constructed from corrosion resistant
- electro-galvanized steel, G90 galvanized steel, and cold rolled steel, aluminium and stainless steel.
- Available in 22 gauges through 14 gauge thickness.
- Variety of mounting methods.
- High-Performance noise absorption characteristics to NRC 1.05
- Industrial duty air-dry enamel paint systems
- Exterior and marine duty catalyzed epoxy and chemical cure paint systems

# ACOUSTIC INERTIA BASES

When a machine needs to be vibration isolated because it produces significant unbalanced forces that would cause excessive motion if supported directly on spring or rubber-based isolators, an inertia base should be utilized instead. In cases when the machine is unstable by nature or is sensitive to outside pressures, they should also be used.

There are numerous common sizes for inertia. Normally, we would advise 6 isolators or more for particularly large bases for frames longer than 2400 mm. The base must be filled with concrete that weighs between 2300 and 2700 kilograms per cubic meter



## TECHNICAL

Welded structural steel perimeter frame Thicknesses as required. Standard members are 6", 8" and 12" (152 mm, 203 mm and 305 mm). Other members up to 36" (914 mm) are available. Base sizes as required Height saving welded-on steel isolator brackets Welded-in reinforcing bars pre-located anchor bolts Optional corrosion-resistant finish



## FEATURES

- Increases the ability of barriers to attenuate noise.
- Tough, abuse-resistant steel construction.
- Designed to withstand substantial loads.
- Structural steel work included on request.
- Weather-resistant and guaranteed rust-proof finish.
- Fully welded steel construction with integral concrete reinforcement fixed at 35 mm above bottom of frame. Range of standard size frames available in three thicknesses 150, 200, 300 & 350 mm. Frame thicknesses not less than L/12 where "L" is the longest side of the frame.
- Finished with a single coat of red oxide primer on external surface only



## USAGE

- Open-type centrifugal chillers
- Reciprocating air and refrigeration compressors
- Chillers and heat pumps
- Close-coupled and base-mounted pumps
- Centrifugal fans, internal combustion engines, and similar types of equipment

# ACOUSTIC DOORS

These doors are made to stop noise and vibration from travelling across spaces. Through the use of insulation technology within the door's body, they seek to absorb sound within a space, Acoustic doors serve as a barrier to prevent excessive sound reflection

According to theory, sound transmission is reduced by a door's mass and solidity. However, this can be enhanced by sandwiching dense cores or using insulating foam.

Depending on your demands, acoustic door sets come in single and double options. For increased soundproofing, twin door sets are frequently used in theatres and cinemas

Perfect Acoustics creates and install high-performance acoustic doors. Our single- and double-leaf acoustic door sets have the highest acoustic ratings of STC 45 dB to 55 dB and are the easiest to operate on the market



## APPLICATION

- Night clubs, Dance Bar etc
- Cinema Rooms, Auditorium, Home Cinema
- Recording Studios, TV/FM Stations
- Airport Services, Broadcasting, Building Services
- Education, Entertainment and Leisure, Healthcare
- Industry, Law Enforcement, Manufacturing
- Typical Acoustic Door Applications
- Power Generation



## SPECIFICATION

- High Performance
- STC Ratings Up To 45 to 55
- Custom Manufactured Acoustic Door to Any Size Specification
- Adjustable soundproof Jamb & Seals
- Ready to Stain/Paint to match your decor
- Best performance wood finished door assembly available
- High performance acoustic seal use- Door perimeter, Automatic door bottom, Batwing, threshold Seals
- Heavy Duty Hinges Used
- Door comes with complete sets that include frames, locking system, hinges and door closer where applicable.

# ACOUSTIC CEILING TILES/ METAL TILES

Acoustic Ceiling Tiles are an easy and effective way to reduce the echo in a noisy room by using your existing drop ceiling grid. Our acoustic ceiling tiles can lay right into an existing T-bar suspended ceiling grid system. Our selection of ceiling tiles provides higher absorption ratings over traditional ceiling tiles to maximize sound control

There are two types of acoustic ceiling tiles: suspended and dropped ceiling grid. They are employed to reduce room echoes and improve the aesthetics of a space. Fiberglass, foam, wood, polyester, and other substrates are used to make the acoustic ceiling tiles, which reduce noise in the space. Moreover, it comes in a range of hues



## APPLICATION

- Acoustic ceiling tiles having high NRC value
- Widely used in Auditorium
- Multiplexes
- Home Theatre, Lecture Hall, Library, Gymnasium
- Hospital, School
- Shopping center, Office building
- IT Sector, Airports, Recording Studio
- Conference Hall, Lecturer Hall, BPO's, Offices, etc



## FEATURES

- **Material Composition:** Made from durable metals like aluminum or galvanized steel
- **Sound Absorption:** Designed with perforations or textured surfaces to enhance sound absorption
- **Acoustic Performance:** Rated for Sound Absorption Coefficient (SAC) and Noise Reduction Coefficient (NRC)
- **Aesthetic Variety:** Available in various finishes, colors, and styles for design customization
- **Durability:** Resistant to moisture, fire, and impacts, suitable for high-traffic areas
- **Easy Installation:** Compatible with standard ceiling grid systems for straightforward installation
- **Low Maintenance:** Easy to clean; often treated to resist dust and stains
- **Environmental Considerations:** Some tiles made from recycled materials, contributing to sustainable building practices

## TECHNICAL

- Building material class: A1 to EN 13501-1
- Thickness: 0.5 mm
- Color: similar RAL 9010
- Light reflection: approx. 86 (ISO 7724-2, ISO 7724-3)
- Sound reduction: from 15 dB to 44 dB
- Sound absorption: NRC = 0.50
- Fire protection: \* up to F 90 (DIN 4102)

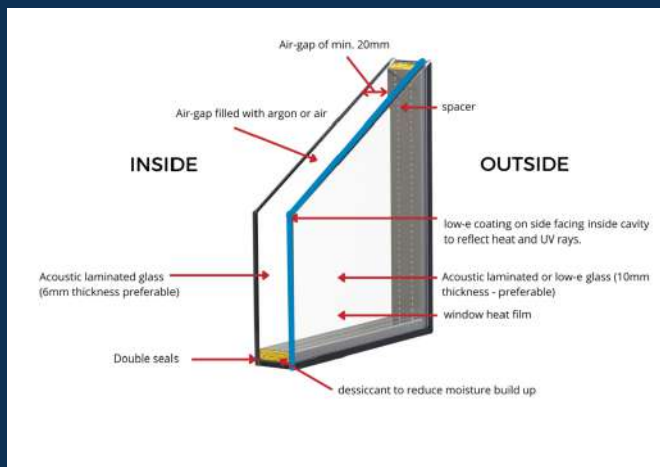


# ACOUSTIC ISOLATION WINDOWS

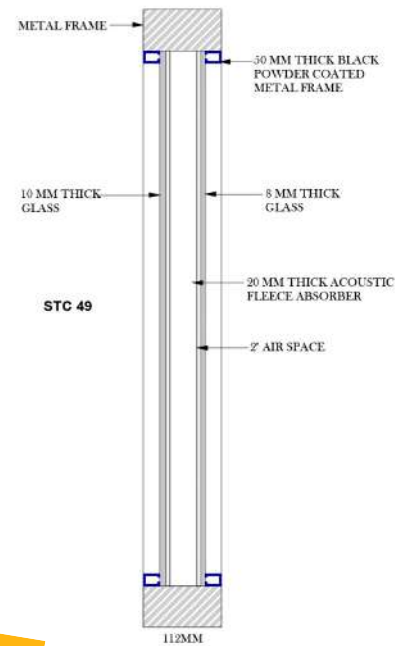
Perfect Acoustic install acoustic windows designed specifically to tackle your noise complaint. Whether it's overhead aircraft, antisocial disturbances or road traffic, we use the science of sound to restore peace and quiet to your home. Micro-rubber spacers are installed around the windows. These spacers act as a barrier between the window frame and the sill, preventing noise from surrounding the timber.

## FEATURES

- A Truly Affordable High-Performance Noise Control Window
- Performance Tested & Certified at an Affordable Price
- STC Ratings up to 58
- Custom Engineered & Manufactured To Any Size
- Anodized Aluminium Frames with Standard Frame Finishes of Natural Aluminium & Bronze - Also Available In Other Specialty Finishes
- Quick Turnaround Delivery Upon Order!
- Custom Soundproof Window Glass Available- Safety Glass, Mirror Pane, Tinted, Etc. (Note: Using Custom Acoustic Window Glass May Change the STC Value).
- Acoustic Window Glass Shipped Separately to Avoid Breakage
- Easy Snap-In Soundproof Glass Wall Installation on Job Site



## Sound proof Glass Window PA-49



## FEATURES

- STC Rating Up to 49.
- Custom Sized to Fit Your Needs.
- Extra Large Units Available with Mullions.
- Frames Available in Clear Anodized or Bronze Anodized.
- Optional Tinted, One-Way Mirror Pane, Safety Glass, Etc.

## WINDOW SPECIFICATIONS

- 3/8" Laminated Glass with Air Cavity & 1/4" Laminated Glass.
- 4-1/2" Aluminum Frame.
- Acoustically Treated Frames & Seals.
- Nonflammable Acoustical Frame Insert
- Fits Any Wall Thickness by Insetting or Offsetting Acoustical Window.



# ACOUSTIC DRY WALL PARTITION

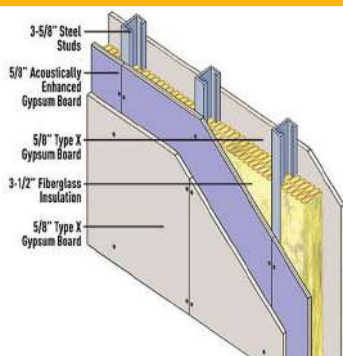
Perfect Acoustics Partition Wall System is formed by fixing Gypsum board of single-layer or multi-layer on single layer stud frame, which can provide the most concise and economic space dividing solution.

The range of drywall partitions is the result of decades of experience in developing testing and supporting warranted systems that meet the needs of the modern building

Quickly and simply constructed from high quality, components, our partitions are guaranteed to perform. With construction technology moving towards fast pace and light weight construction, drywall partition has been widely adopted across residential, commercial, industrial and warehouse buildings. Besides the lightweight construction, drywall partition is versatile in creating interior spaces while enabling high building performances in thermal, acoustic and fire properties.

## FEATURES

- **Soundproofing Material:** Constructed with specialized sound-dampening drywall, which often contains layers of gypsum or other sound-absorbing materials to enhance acoustic performance.
- **Double Layering:** Typically involves double layers of drywall, which increases mass and improves sound isolation compared to standard single-layer partitions.
- **Acoustic Insulation:** Often filled with sound-absorbing insulation materials (like mineral wool or fiberglass) within the wall cavity to further reduce sound transmission.
- **Sound Transmission Class (STC) Ratings:** Rated for their STC performance, indicating how effectively they block sound; higher ratings provide better sound isolation.



## PARTITIONS SYSTEMS, DOUBLE STUD DOUBLE LAYER TWO METAL STUDS

- Decoupled by insulation strip
- Sound protection RW,R = ~59dB
- Fire rating up to 120 minutes
- Static wall height



## APPLICATION

- Private and social housing
- Apartments
- Healthcare
- Educational Facilities
- Recreational
- Industrial Properties



**Safe & Durable:** PERFECTACOUSTIC partition is fire rated and achieves the highest European fire classification, A1, according to EN13501-1. Therefore it is able to meet building code requiring drywall insulation to be non combustible; providing a fire safe environment for buildings and its occupants.

This higher density material provides superior sag resistance and fit. It can be easily cut and trimmed for the best possible fit into the partition wall cavity, assuring there will be no gaps that may compromise the performance of the system. They cover all applications, from simple space division, through to high performance walls designed to meet the most demanding fire resistance, sound insulation, and impact and height requirements

# SOUND TESTING

Perfect Acoustics Partition Wall System is formed by fixing Gypsum board of single-layer or multi-layer on single layer stud frame, which can provide the most concise and economic space dividing solution.

- Perfect Acoustics have experts, engineers, test tracks and facilities to test against international standards

**TWO DIFFERENT SOUND TESTING METHODS ARE AVAILABLE.**

1. Airborne sound test
2. Impact sound test



## FEATURES

- Sound Level Measurement
- Frequency Response
- Room Acoustics and Reverberation Time
- Sound Isolation (Sound Insulation)
- Speech Intelligibility
- Background Noise Measurement
- Sound Field Mapping
- Sound Quality (Harmonics and Distortion)
- Impulse Response
- Echo and Flutter
- Noise Pollution Testing
- Acoustic Modeling and Simulation

Sound testing is frequently referred to as “pre-completion” testing, which denotes that it is done right before the development is finished. This is relevant to new building, but it could also be referring to a test that needs to be carried out in a completed home that is considering design or construction adjustments.

Airborne Test	Impact Test
This test will be conducted between any wall, floor, or ceiling that divides a home.	This test is conducted on a floor-to-ceiling wall separating residences.
A loudspeaker is used to play pink or white noise while measuring the sound levels in each room is how the test is conducted.	On the floor above the room where the sound level is monitored, a tapping device is utilized.
The test will determine how much noise is lost through the barrier and how much noise is conveyed via the air	The test will gauge the structural vibrations that the tapping machine transmits through the floor.
Normal conversations, television noise, music, and many other sounds are examples of airborne noise.	Steps and the sound of objects falling are two examples of impact sounds.

# ACOUSTIC CURTAIN

Perfect Acoustics is introducing a new line of soundproof curtains that are primarily made to absorb more noise than conventional ornamental curtains. These sound-absorbing drapes are best employed in situations where it's necessary to reduce ambient light and the acoustic reflection of glass. One layer of acoustic fabric is the most common option. You can choose from a variety of fabric textures and colors to create the ideal mix for your project.

The acoustic curtains can be built of a second layer of cloth if there are strong demands for improved sound absorption, with an intermediate additional sound-absorbing material that is not apparent. Due to their very good acoustic properties, acoustic curtains can reduce annoying noise reflections and resonant acoustic field, improving acoustic comfort, offering a better acoustic environment. It is possible to change the light and acoustic conditions of the room with an easy horizontal movement

## FEATURES

- High-Quality Construction
- Excellent Sound Absorption
- Wool Core- Absorbs, Filters & Breaks Down Harmful Noise from The Air
- Reflects Thermal Energy
- Custom Designed for Any Application
- Colours: Wide Variety of Face Layer & Lining Fabrics Available
- Variety of Fabric Options
- Hanging — Rail System



## APPLICATION

- Home theatres & schools
- All residential spaces
- Retail spaces
- Office spaces
- Commercial spaces & restaurants



# ACOUSTIC VINYL BARRIER

Mass loaded vinyl sound insulation is the ultimate noise reduction product for residential and commercial buildings. As a tough and effective noise reduction material, cheap mass loaded vinyl sheet is a more environmentally friendly and viable alternative to old lead sound insulation. The goal of mass loaded vinyl sound insulation is to add dense mass to the enclosed area to prevent sound waves from passing through the ceiling and walls. In fact, you will find MLV sound insulation material in the recording studio to take seriously sound control.

Mass loaded vinyl or mass load vinyl is a high-density nonporous material that exhibits non-resonant quality due to its flexible nature. Installing mass loaded vinyl not only provides amazing noise reduction capabilities, but also safe and easy to use. The MLV is usually connected to joists or studs. Once the application of sound caulking is done, the seam is sealed with tape to ensure optimum sound insulation. The mass loaded vinyl blocks noise every day, from traffic and street construction sounds to railways, buses and even aircraft. For a variety of sound problems, this is a cost-effective solution developed by mass loaded vinyl manufacturers.

## PROPERTIES

- Nominal Weight : 3.1 kg/m<sup>2</sup> and 5.0 kg/m<sup>2</sup>
- Nominal Thickness : 2.0 mm and 3.0 mm
- Hardness : 85 (Durometer Shore A, 1sec dwell)
- Flammability : Ignitability index 0 Spread of Flame index 0 (AS1530.3, 1999 Australian Building Codes) Heat evolved index 0 Smoke Developed index 0-5



## SPECIFICATION

- Thickness: 3mm
- Size: 1000x5000mm, 1000x10000mm



## ACOUSTIC RATINGS

- BS EN ISO 717-1 Rw (C,Ctr) (-1,-3) 27dB (3mm)



## FEATURES

- High Acoustic performance
- Highly flexible allowing fast installation times
- Free from SVHC like lead, halogens and unrefined aromatic oils
- Long lasting performance
- Cost effective
- Higher Tear & Mechanical strength

## APPLICATION

- Commercial Buildings-Offices
- Shopping Malls
- Hospitals
- Hotels
- Residential Apartments
- Mixed use Buildings
- Multi-Level Unit Housings
- Occupied Spaces

# ACOUSTIC LOUVERS

A comprehensive line of certified, high-performance acoustic louvers for addressing a wide range of environmental noise pollution issues. Perfect Acoustics high absorptive performance type Acoustic louvers reduce unwanted noise transfer into the environment while restricting air movement to a minimum.

Designed to be visually beautiful as well as durable, with optimal acoustic performance and minimal pressure drop. As standard, the frame is inverted U-shaped with 25mm flanges and a flat blade design Available in single and double bank configurations. Louvers with a depth greater than 300mm will have a twin bank construction with chevron blade design.

Acoustic louvers are often constructed from materials like metal or composite materials that enhance durability and performance. They can be integrated into building facades or installed as standalone features, depending on the requirements. Additionally, they are engineered to withstand environmental factors, ensuring long-term effectiveness. By combining sound reduction with ventilation, acoustic louvers are a practical solution for managing noise in various settings.



## FEATURES

- Available in any cross-sectional dimensions to “fit-the-opening”
- Modular unit sizes to fit openings without using transitions or large blank-off sections
- Standard depth 12”; also other depths available
- 1”xJ “Heavy wire mesh bird screen (usually on inconspicuous side)
- Can be selected to suit the acoustic, space, or energy-cost requirements
- Construction quality and aerodynamic design optimized to give reliable performance, best acoustics, lowest pressure drop and lowest overall cost



## TECHNICAL

- Finishes: Powder coated finishes with different Colour
- Flange- with or without
- Material- Aluminium or GI
- Depth- 200, 300 or 600

## APPLICATION

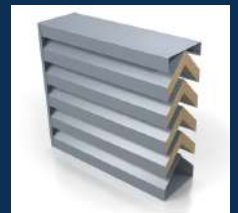
- Industrial Facilities
- HVAC Systems
- Music Venues, Sports Facilities
- Commercial Buildings, Data Centers
- Residential Applications
- Public Transportation Hubs

## PERFORMANCE

Type	Thickness (in)	Noise Reduction (dB)						
		125Hz	250Hz	500Hz	1000Hz	2000Hz	4000Hz	8000Hz
SAL/1	6	5	7	9	10	10	10	12
SAL/2	6	7	11	15	16	17	18	18
SAL/1	12	7	9	13	16	17	18	18
SAL/2	12	8	14	22	27	30	30	31

### TYPE- A

- 30-40% open area
- 12", 16", or 24" thickness
- No line of sight (security)
- Maximum attenuation



### TYPE- B

- 30-40% open area
- 12", 16", or 24" thickness
- Small vane spacing
- Low frequency noise control



### TYPE- C

- 40-50% open area
- 6" or 12" thickness
- Low pressure drop
- Light Weight



# ACOUSTIC UNDERLAY ROLL MAT

Perfect Acoustic Underlay is an acoustic underlayment for floors. It is made from 94% recycled rubber content and can be used directly under tile, vinyl plank/ tiles and wood flooring. In fact it can be used under any hard surface floor finish in concrete and wood frame construction.



Perfect acoustic underlayment engineered for direct adhered floor coverings such as tile, stone, wood, and vinyl floor coverings. It is a high-performance acoustic underlay designed to reduce the transmission of impact sound caused by people walking, impact vibration and noise reduction performance. This can be installed under ceramic tile, stone, carpet, carpet tile, and hardwood flooring

An acoustic underlay roll mat is designed to reduce sound transmission between floors, making it an ideal choice for residential and commercial spaces. These mats are typically made from materials like foam or rubber, which help absorb sound vibrations. Installing an acoustic underlay can significantly improve the overall acoustic comfort of a room, minimizing noise from foot traffic and impacts. They are often used under various flooring types, including laminate, hardwood, and carpet.

## TECHNICAL

- Material: Elastomeric rubber mat with recycled rubber content
- Density: 700-750kg/m<sup>3</sup> (-+ 10)
- Recycled content: yes
- Thickness: 3-12mm (+/- 0.3mm)
- width: 1200mm
- Maximum Load: 3000kg/m<sup>2</sup>
- Tensile Length: 3.48 kg/cm'
- Color: Black (granulate)
- Service temperature range: -30oC to +85oC
- Impact Isolation Class IIC: 47 to 55
- LW: 18 to 22 dB

## APPLICATION

- Gym, Club & Dancing floor
- Hotels, Offices & Medical facilities
- Resistant studios & movie theater
- Industrial Building & Machinery foundation
- Automotive industry- wheel arch & chassis
- Residential, Commercial & high-rise building
- Sports court & running track






## FEATURES

- Long lifespan environmental friendly
- Excellent acoustic properties
- Does not absorb water
- Helps to protect bacteria, mold, fungi growth

# ACOUSTIC WOODEN PANEL



## PERFORMANCE

Type	Perforated	Grooved	Micro Perforated
Type			
Thickness	12, 15, 18mm		
Model	16/8, 32/6, 8/2	28/4, 13/3, 9/2	5/1, 3/0.9
Size	1200x600mm, 600x600mm	128x2400mm, 197x2400mm	1200x600mm, 600x600mm
NRC	0.5 to 0.9	0.5 to 0.9	0.5 to 0.7
Finish	RAL Paint, Wood Veneer, Melamine Veneer, High Pressure Laminate		
Installation	Sliding Profile, Clip Fixed	Clip/ Grooved Fixed	Sliding Profile, Clip Fixed

Perfect Acoustics Wooden panels are powerful union between architecture and acoustical performance. These panels are typically mounted with a porous, sound absorbing core behind, such as fiberglass / polyester board with appropriate density for optimum performance and to meet the requirements of the design

These panels are typically mounted with a porous, sound absorbing core behind, such as fiberglass / polyester board with appropriate density for optimum performance and to meet the requirements of the design

Installation is typically straightforward, with options for wall or ceiling mounting using adhesives or brackets. Acoustic wooden panels are durable and long-lasting, maintaining their performance and appearance over time. Some panels are treated to be fire-resistant, adding a layer of safety. Overall, they offer a functional and stylish solution for anyone looking to improve acoustics while enhancing interior design.

## APPLICATION

- Restaurant Acoustics, Office Acoustics, Hotel Lobby and Banquet Hall Acoustics
- Church Acoustics, Classroom Acoustics, Auditorium Acoustics, Lecture Hall Acoustics
- Home Theater Acoustics, Recording Studio Acoustics, Entertainment Facility Acoustics

## FEATURES

- Configurations available for NRC = 0.80 and 1.0
- Offers reflection and reverberation control in a beautiful millwork finish
- Available in sizes 197mm x 2440mm, thickness 15mm, 18mm, 2400 x 600, 600 x 1200
- Choose from any commercially available wood veneers, laminates or paint colors
- Decorative and easy to install with Metal profile and Clip system
- Can be integrated with several standard grids for ceiling mounting
- Panel cores are high recycled content, ULEF, Class A Fire Rated and FSC certified



# ACOUSTIC SOUND ATTENUATOR

A sound attenuator is a device designed to reduce the intensity of sound waves as they pass through it. Commonly used in HVAC systems, it helps minimize noise generated by fans and air movement. The primary function of a sound attenuator is to absorb and dissipate sound energy, leading to a quieter environment.

These devices are typically constructed from materials that provide sound insulation, such as fiberglass or mineral wool, encased in a durable outer shell. They are available in various sizes and configurations to fit different applications and spaces. Installation is often straightforward, allowing for integration into existing ductwork.

Sound attenuators are essential in industrial settings to mitigate noise pollution and comply with regulatory standards. They can also enhance the comfort of living spaces by reducing unwanted noise from outside or mechanical systems. In addition to their acoustic benefits, some models offer thermal insulation properties. Overall, sound attenuators are vital components for achieving a more peaceful and comfortable acoustic environment.

## TYPE- RECTANGULAR AND CIRCULAR

- Elbow Dissipative
- Custom Designs as Required
- Cross-Talk
- Straight Dissipative



## FEATURES

- Increased insertion loss even in the high-frequency range
- Up to 30% lower differential pressure
- Attenuation effect due to absorption
- Frame edges are folded to protect the infill
- subdivided construction with angle section frame
- Energy efficient and/ or space saving due to aerodynamically profiled frame
- Multi-section construction available for large dimensions

## TECHNICAL

- Splitter thickness:100,200mm
- Nominal sizes:
- Width subdivided: up to 4800mm
- Height subdivided: up to 3600mm
- Length subdivided: up to 3000mm
- Operating temperature up to 100 °C
- Casing and splitter frames made of galvanized sheet steel
- Standard flange and angle sections made of galvanized steel
- Absorption material is mineral wool/ fiberglass

## APPLICATION

- Fan Intel and Discharge, Air Handling Units
- Cooling Towers, Chillers, Generators, Radiator
- HAVC Duct Systems for Commercial, Institutional and Industrial Buildings

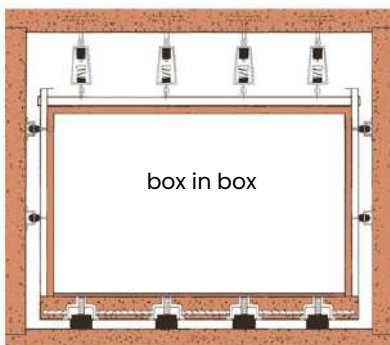


# ACOUSTIC BOX INSIDE BOX SYSTEM

Hearing sounds from your neighbour's walls. Problems with nightclub noise traveling to other areas (gas rooms and meeting rooms, etc.)

Only by adding extra acoustic treatments to the concrete walls, floor, and ceiling can the municipality's regulations to meet requirements (Example 65dB @ 3 meters) be satisfied.

Below is a basic list of strategies in ascending order of potency. Sound Transmittance Classification (STC) is a common method for measuring sound isolation. A higher STC number indicates more sound isolation.



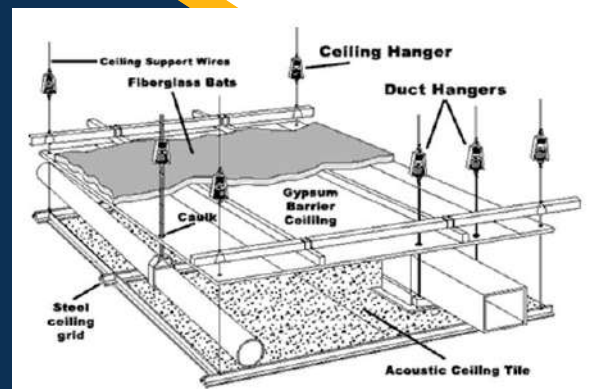
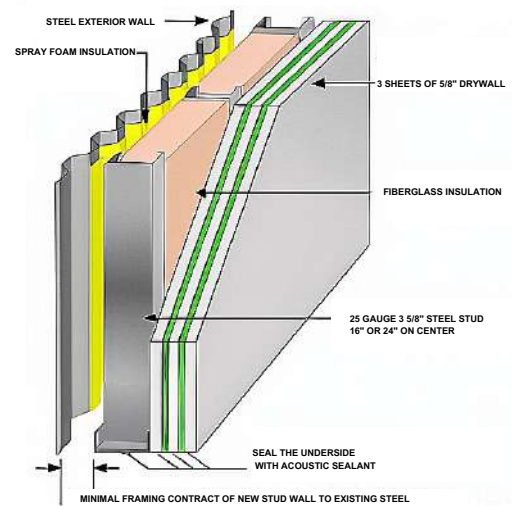
Low frequency (bass) isolation is noticeably enhanced with the Better and Best Solutions. They are useful when music or sound systems are present because of this. The addition of effective decoupling through the use of Sound Isolation Clips and Drywall/Ceiling Furring Channel is the most notable enhancement from this method. The four components of soundproofing are all included in this solution. Decoupling, absorption, mass, and damping are all present. It is unquestionably the most time-consuming, but it is also the most complete answer.

Several configurations can be implemented in the ceiling and walls to achieve sound transmission classes greater than STC 60,

A professional acoustic installation may create this configuration with the addition of staggered gypsum layers and insulations of varied densities

## FEATURES

- Sound Isolation
- Vibration Control
- Multi-Layer Sound Absorption
- Improved Acoustic Performance
- Energy Efficiency
- Flexible Configuration
- Reduced Sound Leakage
- Aesthetic Flexibility
- Enhanced Speech Intelligibility



## APPLICATION

- Night Club, Dance Bars, Sports Bars etc
- Cinema Rooms, Auditorium, Home Cinema
- Recording Studios, TV/FM Stations etc

# ACOUSTIC FABRIC CEILING BAFFLES



Acoustic fabric ceiling baffles are specialized panels designed to reduce noise reverberation and improve sound quality in a variety of spaces. Typically suspended from the ceiling, these baffles are made from sound-absorbing materials like fiberglass or foam, which help control excess noise and echo. They are particularly useful in environments with hard surfaces that amplify sound, such as offices, classrooms, auditoriums, and restaurants. The baffles' vertical placement allows them to target the upper parts of a room, where sound reflections are often most problematic.

The fabric covering of these baffles serves both functional and aesthetic purposes. It allows sound to penetrate the material for absorption while offering a variety of colors and textures to match the interior design of the space. This versatility in design makes them suitable for a wide range of settings, from corporate offices to creative studios, enhancing both acoustics and the overall visual appeal of the environment. The fabric is typically durable and easy to maintain, with options for cleaning or replacing the covers if necessary.



## TECHNICAL

- Core Density: 96kg/m<sup>3</sup> to 120kg/m<sup>3</sup>
- Acoustic insulation size: select from regular or bespoke size up to 4'x8'
- Thickness: 25mm, 50mm
- Finish: Camira Cara Fabric
- Edge details: Square/ Bevel
- Facing: Fabric
- Colours: Wide range of colours Camira Cara Fabric
- Fire Rating: Class A
- Acoustic Properties: NRC-0.85 to 1.15

## APPLICATION

- Core Density: 96kg/m<sup>3</sup> to 120kg/m<sup>3</sup>
- Acoustic insulation size: select from regular or bespoke size up to 4'x8'
- Thickness: 25mm, 50mm
- Finish: Camira Cara Fabric
- Edge details: Square/ Bevel
- Facing: Fabric
- Colours: Wide range of colours Camira Cara Fabric
- Fire Rating: Class A
- Acoustic Properties: NRC-0.85 to 1.15

PERFORMANCE AND SOUND ABSORPTION (Hz)

Thickness	125	250	500	1000	2000	4000	$\alpha_w$	NRC
1" (25mm)	0.07	0.32	0.81	1.08	1.11	1.00	0.60	0.85
2" (50mm)	0.32	0.84	1.08	1.08	1.08	1.01	1.00	1.00

• NRC - Noise Reduction Coefficient    •  $\alpha_w$  - Sound absorption coefficient



# ACOUSTIC POLYESTER CEILING BAFFLES

Acoustic polyester ceiling baffles are an effective solution for controlling sound in various commercial and residential spaces. Made from high-performance polyester fibers, these baffles are designed to absorb sound and reduce noise levels, improving the acoustics of a room. They are particularly useful in environments with high ceilings or open layouts, where traditional soundproofing methods may be less effective. The lightweight yet durable nature of acoustic polyester allows for easy installation and maintenance, making it a popular choice for architects and designers looking to optimize room acoustics.



These baffles come in a variety of shapes, sizes, and colors, offering flexibility in design while enhancing the aesthetic appeal of a space. Their sound-absorbing properties help reduce reverberation and echo, creating a more comfortable environment for conversations, presentations, and other activities that require clear auditory conditions. The polyester material is also environmentally friendly, often made from recycled content, contributing to sustainability efforts in construction and design.

## APPLICATION

- Open Office Spaces
- Call Centers
- Classrooms and Educational Facilities
- Conference Rooms
- Auditoriums and Theaters
- Retail Stores
- Cafeterias and Dining Areas
- Gymnasiums and Sports Facilities
- Restaurants and Bars
- Transportation Hubs (Airports, Train Stations)
- Libraries and Study Rooms

## TECHNICAL

- Material: 100% polyester
- Acoustic performance: NRC > 0.8
- Flammability: class A per ASTM E84
- Standard thickness: 9 mm, 12 mm & 24 mm
- Standard size of raw materials: 1220mm x 2420mm
- Shapes: rectangles, squares, 3D shapes or other custom shapes.
- Colours: white, red, blue, etc...



## PERFORMANCE

Thickness	125	250	500	1000	2000	4000	NRC
1/2"	0.00	0.07	0.25	0.59	0.79	0.96	0.45
1"	0.06	0.34	0.68	0.93	0.98	0.97	0.75
1-1/2"	0.14	0.61	0.82	1.04	1.00	0.93	0.85

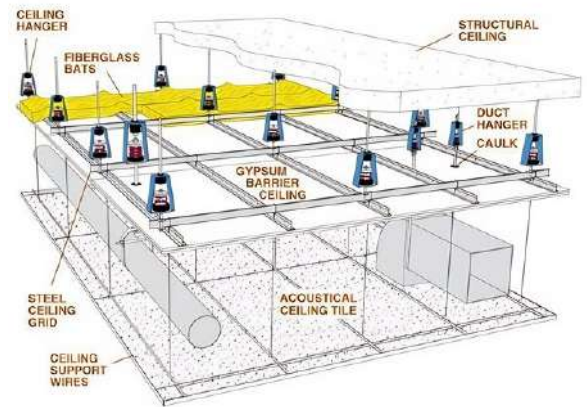
# ACOUSTIC ISOLATION CEILING

An acoustic isolation ceiling is designed to reduce sound transmission between rooms or spaces, improving the overall sound quality and privacy. It is particularly important in environments such as offices, apartments, recording studios, and theaters, where controlling noise levels is essential. These ceilings typically incorporate soundproofing materials like acoustic tiles, mineral fiber panels, or fiberglass to absorb and dampen sound vibrations.

The primary function of an acoustic isolation ceiling is to block airborne sound, such as conversations or music, from traveling between floors or rooms. To achieve this, the ceiling system may include sound-dampening layers, resilient channels, and soundproof insulation installed within the ceiling void. These elements work together to minimize sound leakage, ensuring that noise is contained within a specific area and doesn't disturb other spaces.

## APPLICATION

- Office Spaces
- Apartments & Condominiums
- Recording Studios
- Home Theaters
- Theaters & Cinemas
- Hospitals & Medical Facilities
- Schools & Educational Institutions
- Hotels & Hospitality
- Music Venues & Concert Halls
- Industrial & Manufacturing Spaces



## FEATURES

- **Sound Absorption:** Designed to absorb sound waves and reduce reverberation within a space, improving acoustic comfort.
- **Soundproofing:** Limits the transmission of sound between rooms or floors, reducing noise transfer from external sources or adjacent spaces.
- **Noise Reduction Coefficient (NRC):** High NRC ratings (typically  $\geq 0.70$ ) ensure effective sound absorption for quieter environments.
- **Sound Transmission Class (STC):** Achieves an STC rating of 45–50 or higher to minimize sound leakage between rooms or floors.
- **Impact Isolation:** Provides effective reduction of impact noise (footsteps, dropped objects) with a minimum IIC (Impact Insulation Class) of 45.

The long-term benefits of installing an acoustic isolation ceiling go beyond just noise reduction. These systems help to foster a more productive, comfortable, and healthy environment. For example, in healthcare settings, reducing ambient noise levels can have a positive impact on patient recovery and staff well-being. Similarly, in workspaces, improved acoustics can reduce stress and fatigue caused by constant background noise, leading to better performance and job satisfaction.



# ACOUSTIC ENCLOSURE

An acoustic enclosure is a structure designed to reduce noise generated by machinery, equipment, or other sound sources. Typically constructed from materials with high sound-absorption properties, such as mass-loaded vinyl, fiberglass, or specialized acoustic panels, these enclosures prevent sound transmission to the surrounding environment. Acoustic enclosures are used in various industries, including manufacturing, power generation, and transportation, to comply with noise regulations and minimize disturbances to nearby residents or workers.

These enclosures are engineered with specific features to enhance soundproofing, such as double-walled constructions, airtight seals, and soundproof doors. Ventilation systems are also integrated to maintain airflow and prevent overheating of equipment while still containing sound emissions. The design of an acoustic enclosure varies depending on the type of machinery, its location, and the desired noise reduction level. Some enclosures may include additional features like vibration isolation mounts or internal absorptive materials to further dampen noise.

In addition to noise reduction, acoustic enclosures often serve to protect sensitive equipment from external elements like dust, moisture, and temperature fluctuations. The modular nature of these enclosures allows for flexibility in design, enabling them to be tailored to specific requirements and adapted for future needs.



## PERFORMANCE

- **Noise Reduction:** Blocks or reduces sound levels (measured in decibels, dB)
- **Soundproofing:** Prevents sound from escaping through walls, doors, or vents
- **Vibration Control:** Reduces vibrations from machinery, preventing added noise.
- **Temperature Management:** Keeps equipment cool while maintaining noise control.
- **Durability:** Stays strong over time, maintaining performance without wear.
- **Ventilation:** Provides airflow without letting sound leak out.
- **Easy Maintenance:** Allows easy access to equipment without affecting noise reduction

## APPLICATION

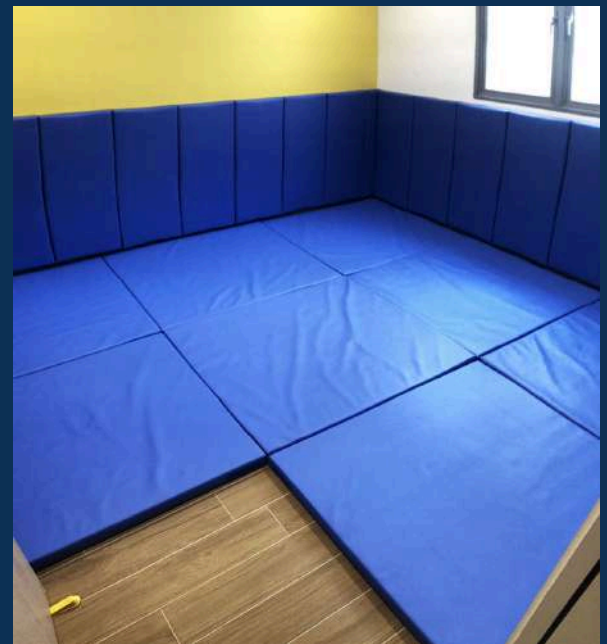
- Industrial Machinery
- Power Generation
- HVAC Systems
- Construction Equipment
- Transportation
- Laboratories and Research
- Emergency Power Systems
- Wastewater Treatment Plants
- Renewable Energy
- Entertainment and Music



# ACOUSTIC ANTI SHOCK WALL PADDING

Anti-shock wall padding is a specialized material designed to protect walls from impact damage while also providing a cushioned surface that absorbs force. Typically made from high-density foam, rubber, or similar resilient materials, these pads are ideal for environments where physical contact with walls is frequent or intense. Their primary function is to absorb shocks and impacts, reducing the risk of wall damage, denting, or scratching, which is common in high-traffic areas or sports facilities.

These pads are commonly used in gyms, playrooms, sports halls, and industrial environments, where walls are subject to impacts from equipment, athletes, or machinery. For instance, in a gym, anti-shock wall padding can protect walls from damage caused by weights, gymnastic equipment, or heavy foot traffic. In sports arenas, it reduces the risk of injury by providing a soft barrier for athletes during high-impact activities. This protective feature extends to workshops and factories, where tools, carts, and heavy equipment may come into contact with walls.



## KEY BENEFITS OF ANTI-SHOCK WALL PADDING

- **Injury Prevention:** Helps reduce the severity of impacts and protects people from injury.
- **Versatility:** Can be used in a wide range of spaces, from recreational to industrial environments.
- **Long-Term Protection:** Durable materials ensure ongoing safety and protection over time.
- **Aesthetic Integration:** Padding can be customized to blend with the environment or décor



## APPLICATION

- Sports Facilities
- Playgrounds & Schools
- Healthcare Settings
- Industrial & Commercial Areas
- Childcare Centers
- Transportation Hubs
- Fitness Centers & Gyms
- Retail Spaces
- Home Use
- Outdoor Play Areas



# ACOUSTIC PHONE BOOTH

An acoustic phone booth is a soundproof, compact space designed to provide privacy and reduce noise distractions during phone calls or virtual meetings. Typically made from lightweight yet durable materials such as acoustic foam, glass, and soundproof panels, these booths are designed to minimize ambient noise and improve speech clarity. They are commonly used in open office environments, coworking spaces, and public areas where noise levels can interfere with private conversations or important discussions.

These phone booths are typically small and modular, offering just enough space for one or two people. Many come with features like adjustable lighting, ventilation systems, and ergonomic seating to enhance comfort during calls. The booths are also equipped with power outlets and USB ports to ensure devices stay charged during long conversations. Some models even incorporate integrated technology such as smart controls for adjusting acoustics or climate within the booth.

## APPLICATION

- Sports Facilities
- Open-Plan Offices
- Co-working Spaces
- Public Spaces (Airports, Libraries, Malls)
- Healthcare Settings
- Educational Institutions
- Call Centers
- Home Offices
- Hotels & Conference Centers
- Remote Work & Virtual Collaboration
- Government & Legal Environments



## OBJECTIVES

- Enhancing Focus and Productivity
- Promoting Mental Well-being
- Supporting Confidentiality and Privacy
- Reducing Workplace Stress
- Facilitating Remote and Hybrid Work Models
- Improving Audio and Video Quality
- Reducing Noise Pollution
- Increasing Space Utilization

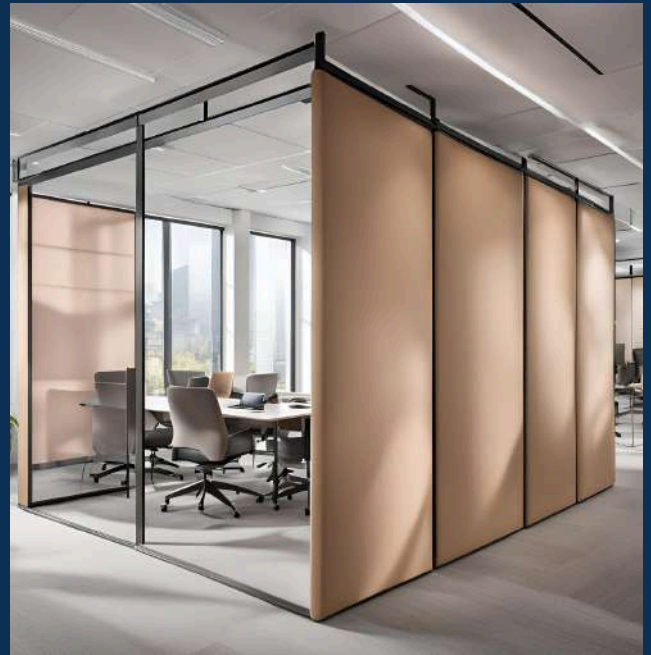
# ACOUSTIC MOVABLE PARTITION

An acoustic movable partition is a flexible, soundproof solution designed to divide spaces while minimizing noise transfer between areas. These partitions are commonly used in offices, conference rooms, hotels, and event spaces, where the need for privacy and sound control is essential.

Constructed with a combination of materials such as soundproof glass, insulated panels, and heavy-duty fabrics, acoustic partitions can be easily moved to reconfigure spaces according to need. They are available in a variety of designs, ranging from folding panels to sliding doors, offering versatility in both aesthetics and functionality.

The primary function of an acoustic movable partition is to reduce sound transmission, ensuring that conversations or noises from one area do not disturb occupants in another. Many models feature a high STC (Sound Transmission Class) rating, which indicates their ability to block sound. The

partitions are often mounted on tracks or wheels, allowing them to be opened or closed quickly without the need for permanent installation. This mobility ensures that the partition can adapt to different layouts and room sizes, making them a cost-effective solution for spaces that require frequent reconfiguration.



## APPLICATION

- Conference Rooms and Meeting Spaces
- Event Venues and Banquet Halls
- Offices and Workspaces
- Classrooms and Educational Institutions
- Healthcare Facilities
- Hotels and Hospitality
- Retail and Exhibition Spaces
- Music and Performing Arts Spaces
- Libraries and Cultural Centers
- Residential Applications

In addition to their acoustic properties, movable partitions are also designed to be visually appealing. Many come with customizable finishes, allowing them to match the interior décor of the space. The partitions can be integrated with advanced features such as automatic closing mechanisms, locks for added security, and options for glass inserts or transparent panels to maintain visibility. Overall, acoustic movable partitions offer a practical solution for creating flexible, soundproof environments in commercial and residential spaces alike.

# ACOUSTIC DIVIDER PANEL

An acoustic divider panel is a partition system designed to reduce noise transmission and provide privacy in shared spaces. Typically made from sound-absorbing materials like foam, fabric, fiberglass, or composite panels, these dividers help create quieter, more comfortable environments in both commercial and residential settings. Acoustic divider panels are often used in open-plan offices, conference rooms, classrooms, and even at home to separate spaces while minimizing the disturbance caused by sound. These panels can be either free-standing or mounted on tracks or walls, offering flexibility in design and placement.



The primary function of an acoustic divider panel is to improve the acoustic quality of a room by absorbing sound energy. This reduces echo and sound reflections, making spaces more conducive to focused work, meetings, or learning. Acoustic panels are often rated by their NRC (Noise Reduction Coefficient) or STC (Sound Transmission Class), which indicate how effectively they absorb or block sound. The thickness, density, and material composition of the panels play a significant role in their acoustic performance. Many panels also have additional features like fire resistance or antibacterial treatments for added functionality and safety.

## APPLICATION

- Office and Workspaces
- Conference Rooms and Meeting Spaces
- Educational Environments
- Healthcare Facilities
- Event and Exhibition Spaces
- Retail Stores and Showrooms
- Hospitality and Hotels
- Music and Performing Arts Spaces
- Libraries and Cultural Institutions
- Residential Applications

## FEATURES

- Sound Absorption
- Customizable Aesthetics
- Portable and Flexible
- Soundproofing Capabilities
- Fire Resistance
- Environmental Sustainability



# ACOUSTIC DOOR SEAL

## PERIMETER SEAL

The self-adjusting and adjustable (spring-loaded) perimeter seal is designed for high performance acoustic applications. This seal can be fitted to the head and jambs of door frame perimeters in lieu of door stops, where frames are non fire-rated.

It's unique spring loaded mechanism, automatically self-adjusts to cater for movement or uneven doors. It is also mechanically adjustable to ensure the desired seal is maintained.

Durable polypropylene fins are incorporated within the gasket housing to provide additional smoke and acoustic sealing properties. An aesthetic, anodised aluminium tamper-proof cover plate simply clips onto the main carrier to conceal fixings

## GAP SIZE

- Min. 0mm / max. 8mm

## DOOR SET STANDARD LENGTHS

- Single 1 x 1000mm, 2 x 2100mm
- Long Single 1 x 1000mm, 2 x 2750mm
- Double 3 x 2100mm
- Long Double 1 x 2100mm, 2 x 2750

## STANDARD LENGTHS

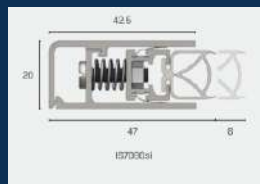
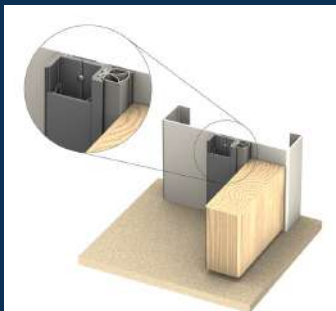
- 1000mm
- 2250mm
- Also available in: 250mm increments from 1000mm to 5000mm

## STANDARD COLOURS

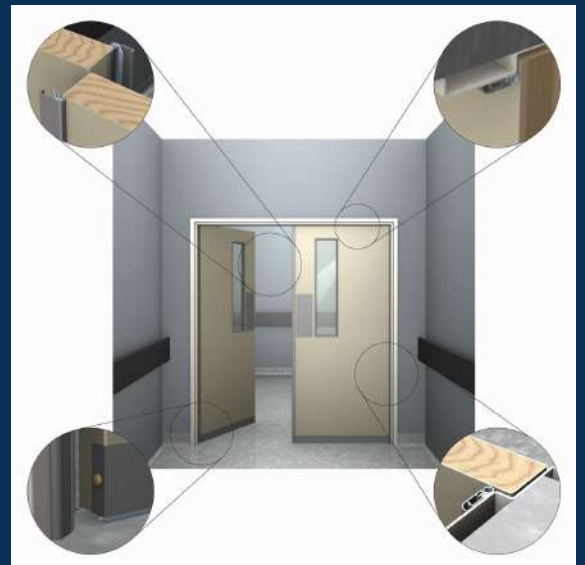
- Silver anodised aluminium with grey silicone gasket (Black silicone gasket also available upon request)

## FIXING

- When fixing the perimeter seal to rebated frames of single doors, specify a long back set door latch



An acoustic door perimeter seal is a specialized sealing system designed to reduce sound transmission around the edges of doors, helping to create soundproof or noise-reduced environments. These seals are typically installed around the perimeter of a door frame to prevent sound leakage, which is crucial for maintaining acoustic integrity in various applications, such as offices, conference rooms, music studios, and healthcare facilities.



# AUTOMATIC DOOR BOTTOM SEAL

## 1. SURFACE MOUNTED BOTTOM SEAL

- Ambient Temperature Smoke
- Energy Efficient
- Medium Temperature Smoke C3.4
- Anti-microbial version available
- Medium Temperature Smoke 200°C
- Sound Containments

### GAP SIZE

- Min. 3mm / max. 8mm

### STANDARD LENGTHS

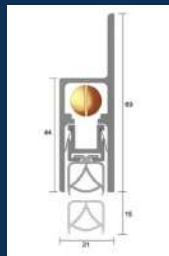
- 1000mm, 2250mm, Also available in: 250mm increments from 1000mm to 5000mm

### STANDARD COLOURS

- Silver anodised aluminium with grey silicone gasket (Black silicone gasket also available upon request)

### FIXING

- Timber fixing screws are supplied with detailed fitting instructions. Fixing holes are pre-drilled and slotted to allow the seals to be positioned accurately



## 2. CONCEALED BOTTOM SEAL

- Ambient Temperature Smoke
- Designed for access and mobility
- Medium Temperature Smoke 200C
- Proprietary Fire Doors
- Sound Containments
- Anti-microbial version available
- Energy Efficient
- Medium Temperature Smoke C3.4
- Proprietary Smoke Doors

### GAP SIZE

- Min. 3mm / max. 15mm

### STANDARD LENGTHS

- 380mm, 600mm, 820mm, 920mm, 1070mm, 1220mm

### STANDARD COLOURS

- Silver anodised aluminium with stainless steel end plates, grey silicone gasket. (Black silicone gasket also available upon request)

### MAXIMUM ALLOWABLE CUT-BACK SIZES

- 380mm seal cuts to 275mm, 600mm seal cuts to 380mm, 820mm seal cuts to 600mm, 920mm seal cuts to 820mm, 1070mm seal cuts to 920mm, 1220mm seal cuts to 1070mm (\*Seals can be cut on site for exact dimension)



## BATWING SEAL

These self-adhesive perimeter seals are fitted in the rebate of a door frame to contain smoke, sound, draughts, dust and light. Strategically located in the impact free zone, the seal adheres to the frame quickly and easily without having to remove the door.

The seal consists of a semi-rigid flame retardant PVC carrier combined with twin elastomeric sealing blades. An aggressive self-adhesive backing tape is situated on both sides of the carrier.

- Ambient Temperature Smoke
- Medium Temperature Smoke 200C
- Proprietary Smoke Doors
- Energy Efficient
- Proprietary Fire Doors
- Sound Containments

## GAP SIZE

- 2-3mm

## STANDARD COLOURS

- Black
- White (Non-returnable product)
- Clear (Non-returnable product)
- (Dark brown and grey available to special order)

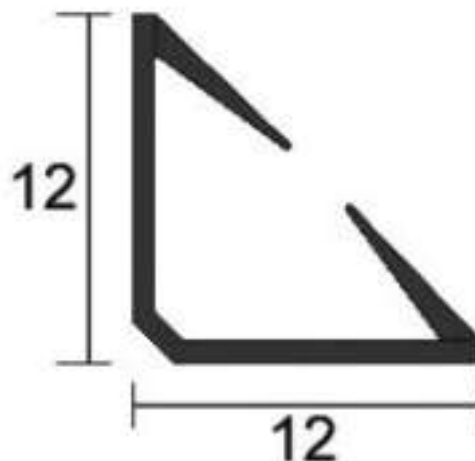
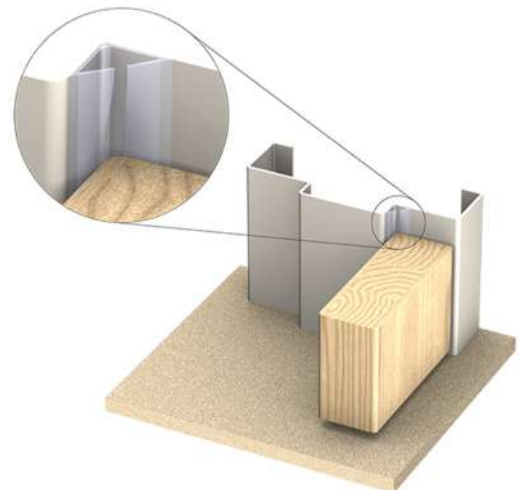
## DOOR SET

### STANDARD LENGTHS

- Single: 1 x 1000mm, 2 x 2100mm, Long Single: 1 x 1000mm, 2 x 2750mm, Double: 3 x 2100mm, Long Double: 1 x 2100mm, 2 x 2750mm

### STANDARD LENGTHS

- 1000mm, 2100mm, 2400mm, 2700mm, 3000mm



# ACOUSTIC 3D EMBOSSED PET PANEL

Acoustic 3D embossed PET panels are a cutting-edge solution for improving both the sound quality and aesthetics of interior spaces. Made from recycled polyethylene terephthalate (PET), these panels offer a sustainable and eco-friendly option for sound absorption and noise control. The unique 3D embossed designs on the surface of the panels not only enhance the visual appeal of a room but also help in diffusing sound, reducing echoes and reverberations. This makes them an ideal choice for spaces where acoustic performance is critical, such as offices, theaters, conference rooms, and home theaters.

The panels are engineered to absorb mid-to-high-frequency sound waves, which are commonly responsible for unwanted noise in many environments. Their textured surface creates a more dynamic interaction with sound, allowing them to efficiently absorb and disperse sound energy. This helps create a quieter and more comfortable atmosphere, improving speech clarity and overall acoustic comfort. The PET material used is lightweight, durable, and resistant to moisture, making the panels suitable for a variety of climates and applications.



## TECHNICAL

- Composition : Recycled Polyester Fibre
- Use : Wall Claddings / Ceiling
- Advantages : Reduces Echo & Reverberation
- Thickness : 3 mm – 8 mm
- Size : 2400 mm x 1180 mm
- NRC : 0.85
- Colours : Free Colours



## APPLICATION

- Auditoriums, Restaurants & Hotels, Soundproof Paneling for Lobby Areas, Pet Panels for Reception Area, Multi-Purpose Halls, Acoustic Panel For Wall Assembly Area, Commercial Spaces, Sound Absorbers for Call Centers, Foldable acoustic office partitions, Acoustic Sound Panels for Classrooms, Hospitals, Industrial Areas, Road noise barriers, Acoustic Sheets for Home Interiors, and TV Back panel, Panel Acoustic for Dance and Music Studio, Broadcast Stations, Acoustic Panels For Walls Soundproof Studio, Soundproof Room, Home Soundproofing Walls, Acoustic Board, Acoustic Wall Panels, Acoustic Walls Meeting Room, Sound Absorbing Panels for Conference Room, Board Rooms, Soundproof Panels for Home theatre, Soundproof Wall Panels for Living Room Etc.

# ACOUSTIC ISOLATION WALL

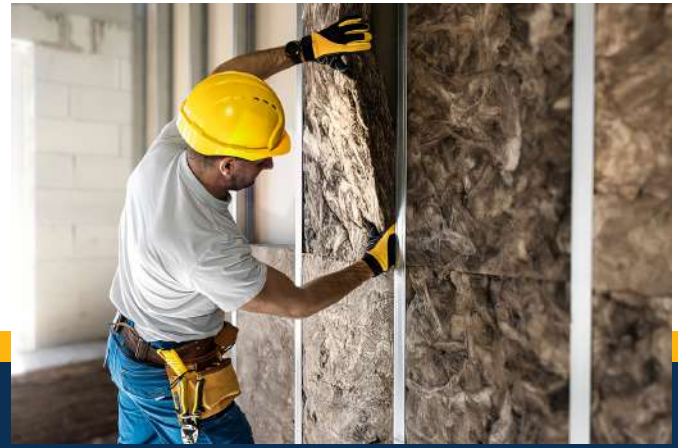
An acoustic isolation wall is designed to reduce the transmission of sound between different spaces, typically used in buildings where soundproofing is a priority, such as in recording studios, offices, or residential units. The core principle behind an acoustic isolation wall is to prevent sound waves from passing through the wall by utilizing materials and construction techniques that absorb or deflect sound energy. This involves creating a barrier that either isolates the structure or incorporates dense, sound-absorbing layers that dampen sound vibrations.

The construction of an acoustic isolation wall typically involves multiple layers of different materials, including drywall, mass-loaded vinyl, acoustic foam, and resilient channels. These materials work together to block sound and minimize vibrations that may travel through the wall's framework. In many cases, a double-wall construction or staggered stud design is used, where two separate frames are built with a gap between them to prevent sound from traveling through the wall's support structure.

Additional features, such as soundproof seals around doors and windows, further enhance the acoustic isolation. The use of decoupling techniques, where the wall's components are isolated from the building's structural frame, can also improve sound insulation. The final result is a wall that significantly reduces noise transmission, ensuring a quieter and more acoustically isolated environment for the space it encloses. The effectiveness of an acoustic isolation wall is typically measured in terms of its Sound Transmission Class (STC) rating, which indicates how well the wall blocks sound across a range of frequencies.

## APPLICATION

- Residential Spaces
- Recording Studios & Music Rooms
- Home Theaters
- Offices & Conference Rooms
- Hospitals & Medical Facilities



## ACOUSTIC ISOLATION WALL SYSTEM

### GYPSUM BOARD

- Lightweight constructions.
- Easy, fast and dry application.
- Good sound insulation performance.
- A material that breathes and balances room climate and humidity levels.
- Environmental friendly.
- Limitless design options.

### ISOLATION WALL CLIP

This is Clip is a resilient sound isolation clip used to attach gypsum wall board (GWB) to interior walls and ceilings. This Isolation Clip is designed to reduce airborne and impact sound transmission. The Clip can be used in wood, steel, and concrete construction. Each Clip has a design load rating of 36 lbs. and can support up to two layers of 5/8" gypsum board when spaced no more than 24" x 48" on-center.

#### *Benefits:*

Increases acoustic performance for STC (airborne) and IIC (impact) ratings. Easy and quick to install. Helps prevent acoustic short circuits. Design load rating of 36 lbs. per clip. UL fire tested and approved.

### METAL STUD AND TRACK

Galvanized lightweight steel sections to be used as a vertical studframing for partitions and wall linings. Our standard high quality metal sections with detailed labeling allows for easy identification on site. Metal sections are cold-rolled from high grade galvanized steel sheets that comply with EN 10327.

# ACOUSTIC CEILING ISOLATOR

The ceiling vibration absorber is an effective way to cut off the structure-borne sound transmission of the suspended ceiling and the original base building ceiling.

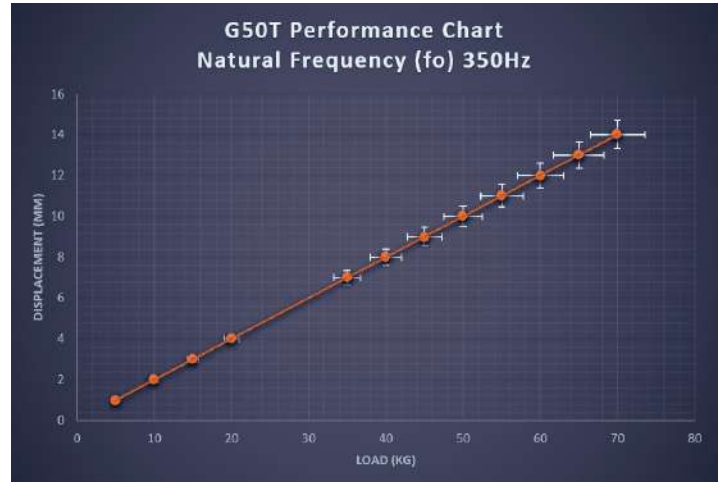
OFF always refuses the non-standard components and the refurbishing adhesive For wave length buster ceiling(G50T)and wave length buster wall(G50Q) vibration-absorbing components, the independent mould is adopted to reinforce and thicken the metal components and the international standard components. The damping rubber

components are injected with 100% original adhesive, the aging resistance time and the damping coefficient are five times that of the refurbishing adhesive, thereby ensuring the permanency and safety of vibration damping and sound insulation effect in the aspect of hardware quality.

Acoustic ceiling isolators are specialized devices used to minimize sound transmission between floors in multi-story buildings. They are typically installed between the ceiling of the lower floor and the floor of the upper floor to reduce impact noise and airborne sound, such as footsteps or conversations. These isolators are designed to decouple the ceiling from the structural framework of the building, effectively preventing sound vibrations from traveling through the ceiling materials. Made from materials with sound-absorbing properties, such as rubber, neoprene, or resilient foam, they help achieve significant noise reduction by damping the vibrations that would otherwise travel through rigid building structures.



## TEST REPORT



## APPLICATION

- Residential Soundproofing
- Home Theaters
- Music Studios
- Commercial Office Spaces
- Hospital and Healthcare Facilities
- Educational Institutions
- Theater and Auditorium Spaces
- Industrial Applications
- Hotels and Hospitality
- Restaurants and Cafés



# ACOUSTIC ISOLATION WALL CLIP

This is Clip is a resilient sound isolation clip used to attach gypsum wall board (GWB) to interior walls and ceilings. This Isolation Clip is designed to reduce airborne and impact sound transmission. The Clip can be used in wood, steel, and concrete construction. Each Clip has a design load rating of 36 lbs. and can support up to two layers of 5/8" gypsum board when spaced no more than 24" x 48" on-center.

## BENEFITS

- Increases acoustic performance for STC (airborne) and IIC (impact) ratings
- Easy and quick to install
- Helps prevent acoustic short circuits
- Design load rating of 36 lbs. per clip
- UL fire tested and approved

## SPECIFICATION

### A. Rubber Isolator:

1. Manmade or natural organic rubber compounds.
2. Molded to isolate ferrule from clip.
3. Minimum of 12 micro-vibration controlling pedestals at point of contact with framing member.
4. Manufactured to ASTM D 2000, M2 AA 510 A13, which includes:

### B. Clip: Galvanized or aluminum-zinc coated steel, 18 gauge.

### C. Ferrule: Zinc-electroplated steel.

### D. Projection: 1-5/8" from supporting structure, when 7/8" drywall furring channels are used.

### E. Substitutions: Not permitted.

## INSTALLATION—WALLS

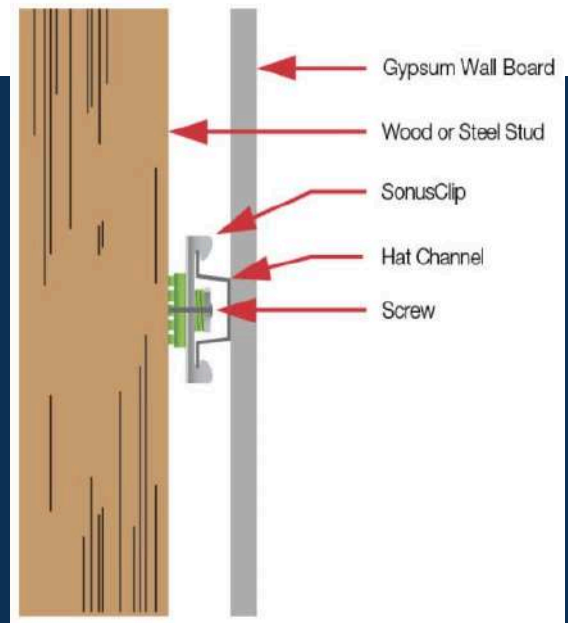
- Install drywall furring channels perpendicular to framing members
- Space drywall furring channels maximum of 24" (600mm) on center.
- Locate first drywall furring channel parallel to floor and maximum of 3" (75mm) above floor and drywall furring channel maximum of 6" (150mm) from ceiling.

## ISOLATION CLIP

- Maximum Spacing: 48" o.c.
- Maximum Design Load: 36 lbs (16 kg)

## CLIP DIMENSIONS

- 3" tall (76mm)
- 1 1/4" wide (32mm)
- Clip with drywall furring channel 1 5/8" deep (41mm)



## FASTENERS OF CLIP TFRAMING

- Minimum pull out and shear of 120 lbs
- Steel framing # 8, #10, #12 x 1 5/8" self tapping fine thread screw.
- Tighten fasteners until they snug up into the metal washer





**Perfect Acoustics**  
All Noise Solutions

Supplier | Manufacturer | Installer

SUIT NO-602 | P. O. BOX 19181 | DONNA TOWER | DUBAI SILICON OASIS  
| DUBAI- UNITED ARAB EMIRATES

[www.perfectacousticsuae.com](http://www.perfectacousticsuae.com)  
[info@perfectgroup.ae](mailto:info@perfectgroup.ae)