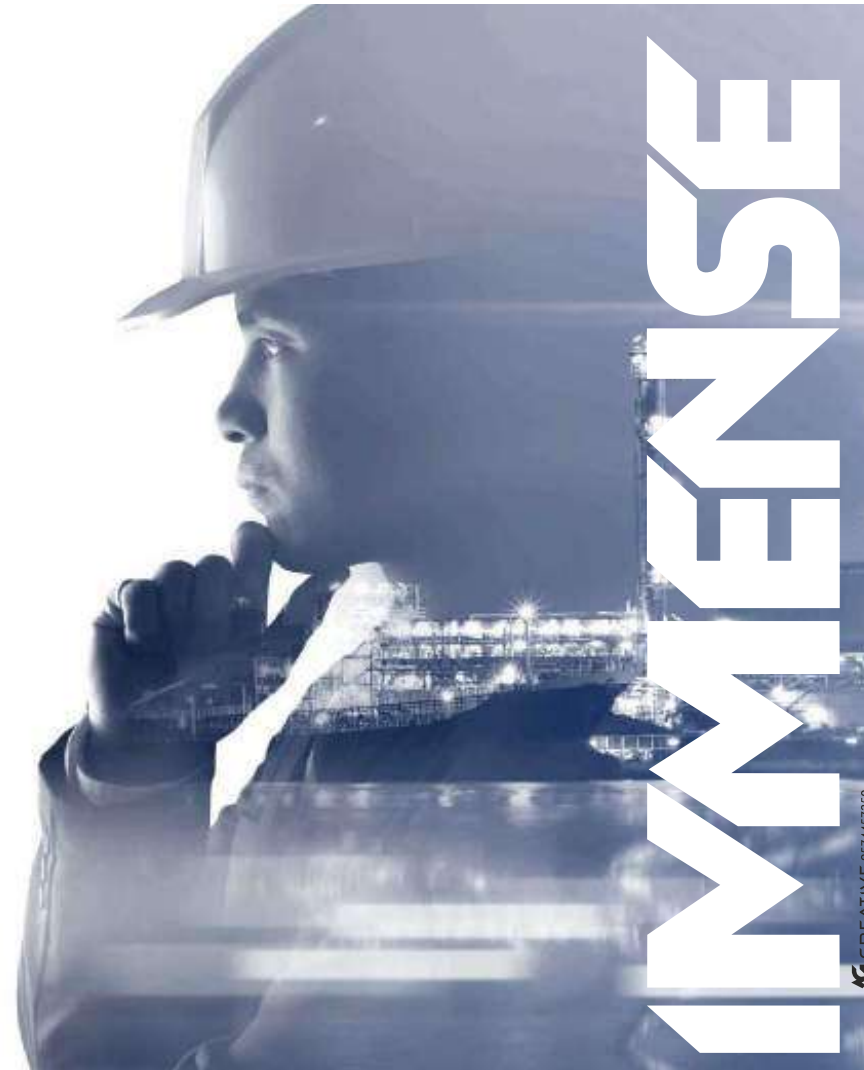




+91 83201 84681 | +91 84608 78587

sales@imin.co.in

107, Ashutosh Society, B/h Utkarsh Petrol Pump,
Karelibaug, Vadodara - 390018, Gujarat-INDIA



KG CREATIVE 9574457850



THE FUTURE OF PORTABLE MACHINING

Our diverse but complimentary portfolio combined with a multi-skilled workforce and industry experts means we deliver cost effective, safe, efficient and innovative solutions to the global Oil & Gas, energy & defence industries.

www.imin.co.in

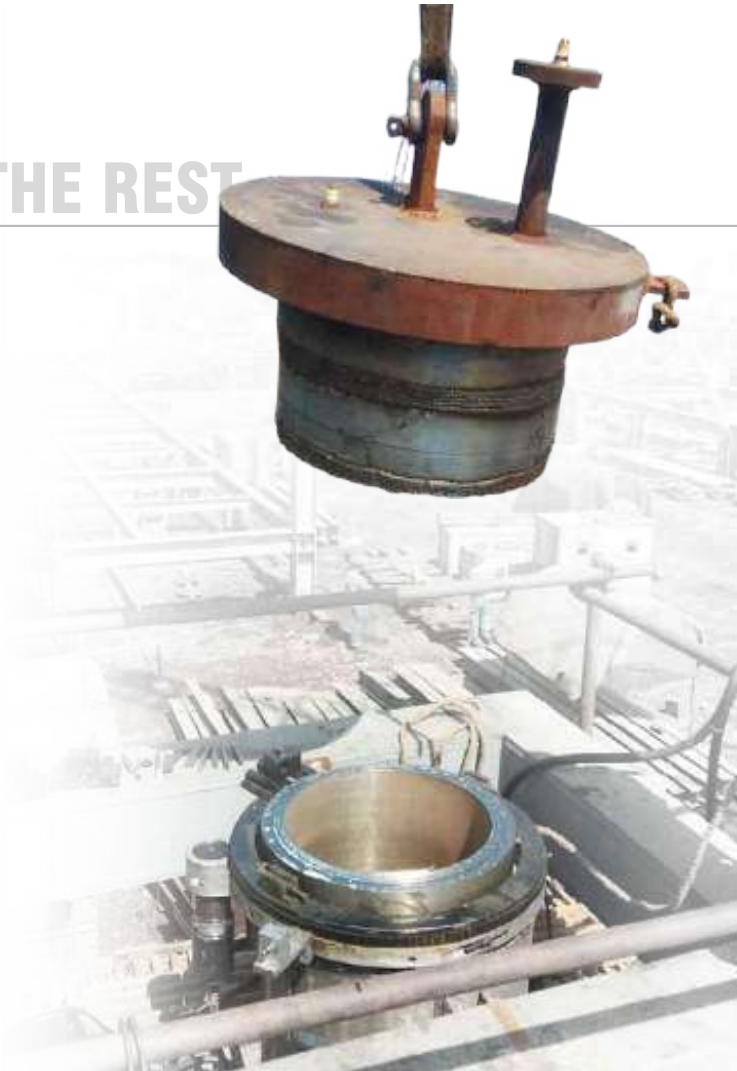




A CUT ABOUT THE REST

MACHINE USAGE APPLICATION

- ✦ At Fabrication Yard/Shop
- ✦ Pipe Length Cutting
- ✦ Pipe End Preparation
- ✦ At Hazardous Area
- ✦ Crude, Petrol, Diesel, Gas, Chemical Line cutting
- ✦ At Plant Shutdown and Project Works
- ✦ High wall thickness pipe cutting and beveling
- ✦ Any type of steel can be cut and bevel
- ✦ Inside machining of pipe ends with degree
- ✦ 110mm Wall thickness pipe can be cut



SPECIAL ONSITE & INHOUSE MACHINING

IMMENSE
INDUSTRY





ONSITE PIPE CUTTING SERVICE

BY SPLIT FRAME COLD CUTTING TECHNOLOGY

Owing to our enriched industrial experience, we are devoted towards offering excellent quality Cold Cutting Work. Offered cutting service is rendered by our skilled professionals using optimum quality machines and high-end technology. We have a team of skilled professionals who render this cutting service in an excellent way. This cutting service is much-admired by our respectable clients for its perfect execution.

MACHINE ADVANTAGE

Health Safety

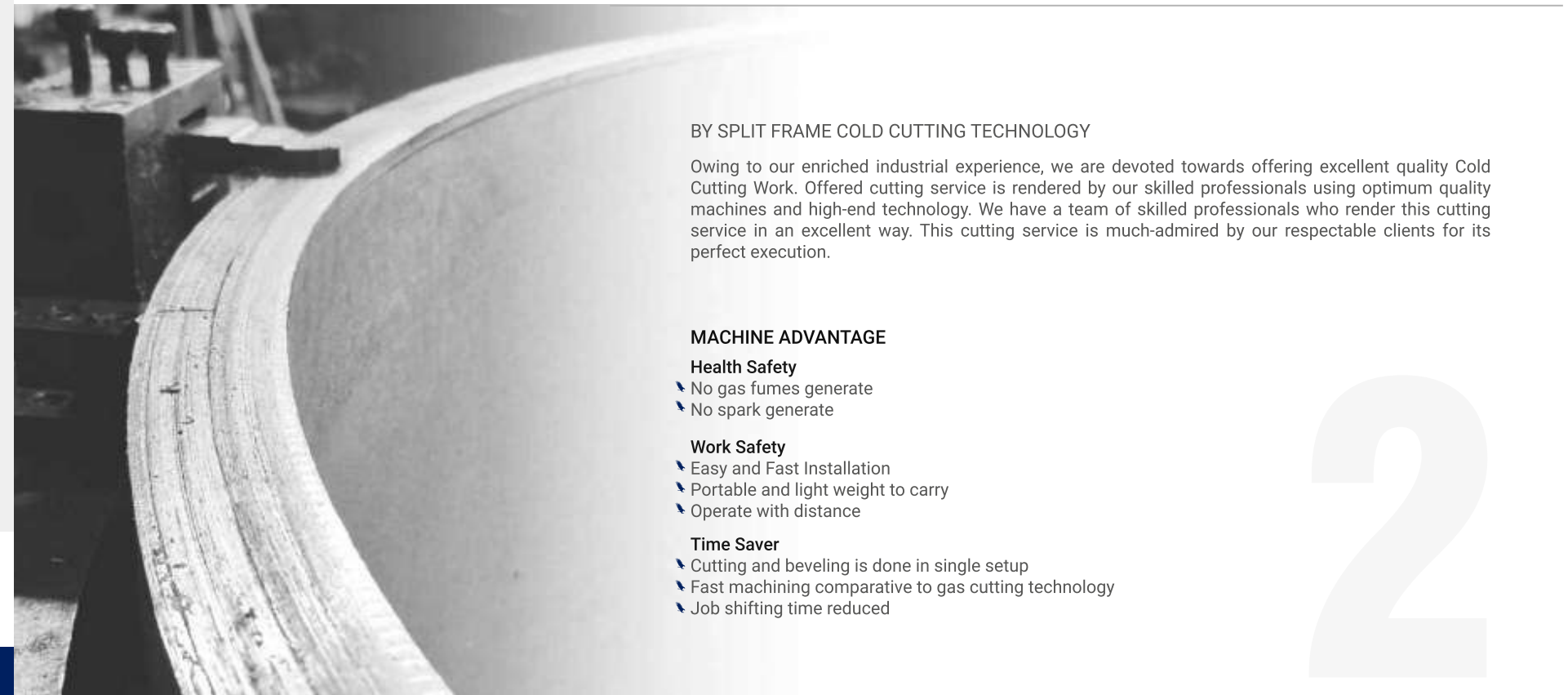
- ✦ No gas fumes generate
- ✦ No spark generate

Work Safety

- ✦ Easy and Fast Installation
- ✦ Portable and light weight to carry
- ✦ Operate with distance

Time Saver

- ✦ Cutting and beveling is done in single setup
- ✦ Fast machining comparative to gas cutting technology
- ✦ Job shifting time reduced



2



THE ULTIMATE SERRATED FORCE

MACHINE USAGE APPLICATION

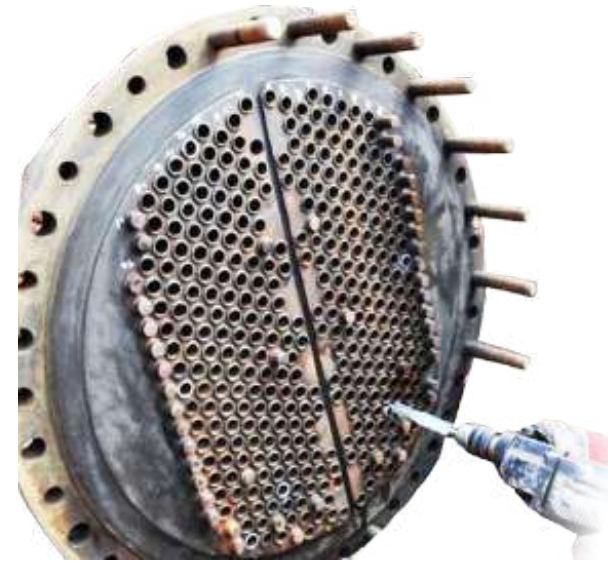
- ✦ Variety of surface faces achievable, concentric, square, eccentric or off-set
- ✦ Ring-type joint groove; hub-type flanges; recessed faces; raised faces;
- ✦ 'O' ring grooves; lens ring grooves; counterbore.
- ✦ Back spot faced or entire back face machined parallel to the front face



HEAT EXCHANGER RETUBING SERVICES

We are first in this field well equipped with all necessary tools & machineries driven by highly skilled and experienced workers. We have independently re-tubed Waste heat boiler (bonnet type), Carbamate Condensers, RG boiler in various fertilizer plants. Air fin coolers and other heat exchangers in bulk quantities for refineries Graphite tube re-tubing, Cold heat exchanger of Sulphuric Acid Plant (Vertically mounted). We are fully geared up with heat exchanger re-tubing during Plant turnaround. We have perfected our condenser services over hundreds of re-tubing projects, mainly focussing on quality of workmanship, safety and reduced outage durations. Our experienced engineers specialized in a wide variety of condenser re-tubing services, including:

- ✦ Tube removal
- ✦ Tube removal (detubing) for modular replacement / replacement tube bundles.
- ✦ Tube sheet repair ✦ Tube installation ✦ Scrap tube recovery



3

16



CHEMICAL DECONTAMINATION PROCESS

Pulling a heat exchanger for cleaning is frustrating, time-consuming and expensive, but we can help. We custom engineer solutions and processes that clean heat exchangers in place, without the delay, frustration, and expense. No pulling equipment out of service for a week. No hydroblasting. No re-fabricating of bundles due to excess handling.

Forget separating the bundle from the shell or having to replace numerous parts for a week-long replacement process. Our chemical heat exchanger cleaning method lets you clean heat exchangers without pulling them, returning your equipment to premium condition while improving your schedule, safety, and bottom line.

The process is simple: after you isolate the selected unit or bank of units, we circulate a solution of carefully selected and blended cleaning chemicals. One of our experts administers the process and monitors it until completion.



TUBE CLEANING BY BRUSH METHOD

Drop the heads on a chiller in the winter and you'll find slime, sludge and scale – maybe tubes that are packed solid with deposits. When you have thousands of tubes to service, your cleaning method matters. For most chillers, that means using a rotary tube cleaner with water flush to power through clogged tubes fast. The spinning shaft propels a scrubbing attachment the length of the tube, loosening deposits, while the high-pressure water stream flushes them out. If you're dealing with enhanced (rifled) tubes, you'll need a machine and attachments that are made specifically for the grooved interiors.

ESSENTIAL ACCESSORIES

Double your cleaning punch with chemical descaling.
ScaleBreak softens thick scale, speeding up mechanical cleaning.
Periodic chemical descaling controls buildup between rotary cleanings.



Nylon brush clears soft deposits like mud and algae



Spin grit brush powers through light scale deposits



Buffing tool removes light to medium scale deposits



FLANGE FACING/SERRATION SPECIALIZED JOB

Immense experienced team offer comprehensive flange machining and with expertise in the design of flange facing machines, we can modify to suit almost any location, tolerance or surface, to cover any of your requirements including but not limited to raised face flanges, heat exchanger flanges, techlok flanges, recessed gaskets & spigots, weld preps.

SIZE

Can machine any size of flange, up to 5 metres Ø (we can develop as per requirement)

TOLERANCE

Flatness tolerances within 0.02mm for the smaller sizes and within 0.2mm for larger diameters
Facing heads are available to machine hard to reach areas in conjunction with boring machines
Grinding attachments fitted where Ra1.6µm or better if required
Comprehensive range of large facing equipment finishing heads for Ra0.8µm.

LOCATION

Inside, outside diameter, surface or bore location and can be set to a required datum (eg ship's datum, adjacent component).
Related flanges can be machined concentric, parallel or to any required orientation in conjunction with portable measurement equipment.





THE CONTROLLED BOLTING SOLUTIONS

In combination with our Insitu Machining capability, the bolting service allow us to supply an Integrated Team for remedial work on damaged flange faces or gasket seating rings / faces, which allows schedule times to be managed / reduced through best in class provision of these services.



VALVE MAINTENANCE / OVERHAULING / REPAIRING

Immense is one of the leading Industrial Valve Repairers with modern state-of-the-art equipment to repair any make, type and size of Valves. We provide a variety of customized Valve Repairing services both on-site at customer's installations and at our factory. We repair, recondition and rebuilt Gate Valves, Globe Valves, Safety Valves, Control Valves, Check Valves, Parallel Slide Valves, Boiler Feed Pump valves, Pressure Relief Valves, Spray Valves, Ball Valves upto 72inch and 10.000PSI to clients specifications and requirement.

Over time, mineralization, rust and corrosion will affect the parts inside of your valves. Yearly plant shutdowns are the perfect time to go over your valves. Take them apart, clean the insides, and replace any worn or broken pieces. In addition to metal parts, there are a variety of rubber and plastic parts that might need to be replaced. If you notice parts that are brittle or rotting, replace them as necessary.

Immense team provides valve bench testing service for onsite and offsite. We offer the following services:

- ✦ Annual fate contracts for all types or Valves Reconditioning.
- ✦ Routine repairs during outages / turnarounds.
- ✦ In-Situ Valves Repairing & testing during Annual Turn Around.
- ✦ Shut down and emergency valves maintenance.
- ✦ Shop repair and testing. Second hand plant refurbishment of valves.
- ✦ In-Situ Lapping of high pressure valves using In-Situ Lapping Machines.



5

14



VALVE BENCH TESTING TECHNOLOGY

The integrity, reliability and safety are only warranted when valves are given the right treatment.

IMMENSE offers a large variety of machines and equipment for the repair and testing of any valve type, size and pressure class. Our mission is to supply guidance by sharing our experience. To pioneer, innovate and manufacture first class test and repair equipment for valves. We deliver safety.

The design and configuration of the IMMENSE products are well proven and based on many years of experience in Shut-off valve, Safety valve and Control valve maintenance, testing and repair. The IMMENSE equipment is fully built in-house and only first class and durable materials are used.



BOLT TORQUING & TENSIONING SERVICE

Immense provide on-site service for Hydraulic Bolt Torque & Tensioning, and we are driven by our Get It Right First Time strategy to ensure that we achieve 'Total Leak Free Joints' for our clients projects, without compromise to Safety of personnel or environment. We can continuously provide this service and goal by ensuring the standards never change, and we stay at the forefront of technology and working procedures.

- Trained, Competent and Experienced site technicians – EICTB standards.
- State of the art equipment – Tested, Calibrated and Certified.
- QHSE documents and procedures that align to our Integrated Management System
- ✦ ISO 9001:2015 Quality Management System
- ✦ ISO 14001:2015 Environmental Management System
- ✦ ISO 45001:2018 Occupational Health & Safety Management System

- Unrivalled Engineering Support at all stages:
- ✦ Up-front engineering and planning.
- ✦ Support during site activities.
- ✦ Remain flexible and support emergent work scopes.

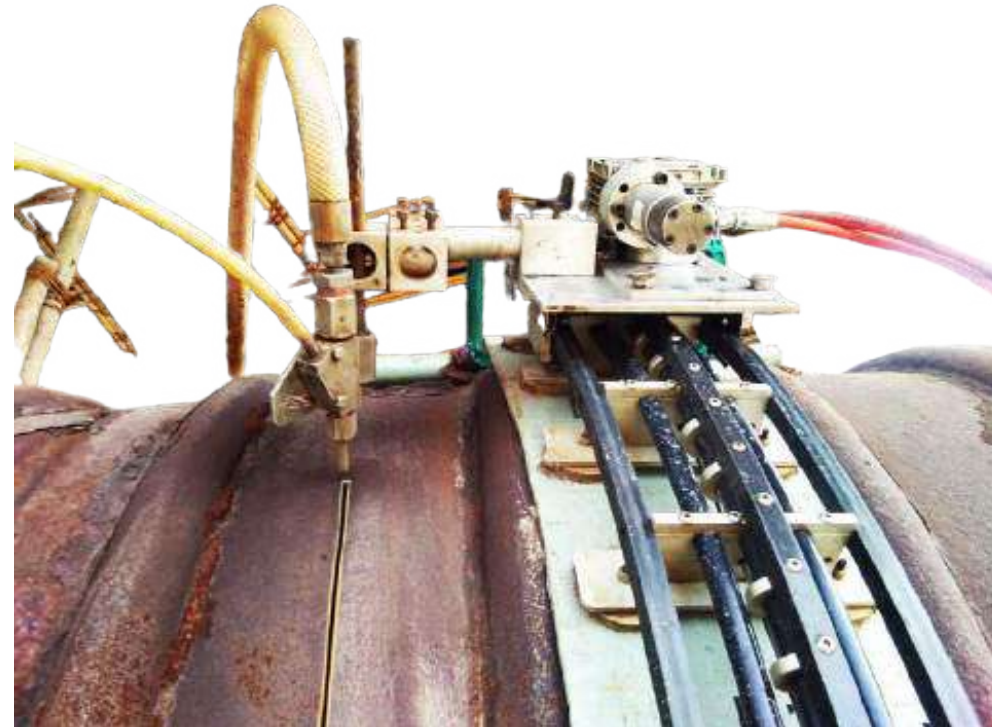
13

6



THE CUTTING EDGE WATERJET TECHNOLOGY

- ✦ We have advanced design, manufacturing and onsite machinists team to perform any job at site.
- ✦ We have developed numbers of fixture for the different cutting application.
- ✦ Cutting Application designed for
 - ✦ Heavy thickness plates, Pipes and concrete structure
 - ✦ Manhole for hydrocarbon tanks
 - ✦ Scraping of vessels, structures without spark
 - ✦ Heat dissipation affected material cut



HOT TAPPING SERVICE

Hot tapping is a process for creating a new branch connection to an existing pipeline or tank while the system is still in service and pressurized. Typically, a weld-on or bolt-on saddle is attached to the pipe with a flanged outlet. A flanged valve is bolted onto the saddle, and a pressure-tight tapping machine attached to the valve. Next, the tapping machine bores into the pipeline. Once the tap is completed the valve is closed, the tapping machine is removed, and the new branch connection is now live.

Hot tapping services are crucial in repairing, servicing, and Immense provides top- quality hot tapping services for pipelines and pressurized systems without shutting down the system or interrupting material flow. Immense utilizes machines and services which safely assist with any range of pipeline and tapping size. Our services specialize in top quality, efficient hot tapping with a proven track record of successful hot tapping projects.



7

12



INLINE PIPELINE SERVICES

We take pride in providing safe, quick, and efficient service for pipeline repair, reconstruction, or replacement with our state-of-the-art line of hot tapping machines. With an arsenal of industry-grade equipment and a variety of hot tapping service methods, our in-house hot tapping specialists are well-versed in providing professional hot tapping services for a large scope of pipelines and pressurized systems regardless of size, scale, or complexity. Immense is your solution for all hot tapping needs.



COLD CUTTING BY ABRASIVE WATERJET TECHNOLOGY

Cold Cutting is the process of cutting metallic, cementitious or a combination of the two materials through the use of Ultra High Pressure Water. Hydro Abrasive cutting or Cold Cutting uses an abrasive material in the water stream to cut these materials to a high degree of accuracy with a number of advantages of other mechanical methods.

Cold Cutting produces no heat and therefore no distortion of the base material, does not affect the metallurgy and produces no sparks so can be used in volatile atmospheres. It can be used to simultaneously cut and weld prep steel ready to accept the replacement steel.



LINING THE ALIGNED BORE

TYPICAL APPLICATIONS

- ✦ Crane boom Clevis Plate
- ✦ Valve Seats and Sealing Bands
- ✦ Hinges and Lifting points
- ✦ Ferry Ramps Hinges
- ✦ Excavator buckets
- ✦ Turbine casings
- ✦ Ship's stern tubes, A Brackets, P Brackets
- ✦ Drive shaft housings
- ✦ Gearbox housings
- ✦ Turbine couplings
- ✦ Power press frames



LINE BORING SERVICE

The boring machine is made up of 2 or more bearings (depending on the case), in which the boring bar rotates and slides. The boring machine with its electronic control unit is attached to one of these bearings.

Boring machines also have tool for automatic cylindrical welding overlay (in standard set). Whether line boring, through boring or blind boring our Site Technicians and equipment can meet almost any machining challenge.

SIZE

From 10mm Ø up to 2000mm Ø and up to 6000mm deep bores ☒ Range of immense boring and drilling machines can be modified to suit requirements.

ABILITY

- ✦ Holes can be bored both independently to make round and parallel to tolerances with 0.02mm (depending on dimensions and material)
- ✦ Concentric with the required parallel or roundness datum or off-set as required
- ✦ Can be set using laser alignment equipment
- ✦ In house welding capacity available on site
- ✦ Boring machines are electrically, air or hydraulically powered

