



Dedicated Spirit, Determined Mission



COMPANY PROFILE





TABLE OF CONTENT

• About Us	— —	04
• Our Team	— —	05
• Our Attributes	— —	06
• Our Attributes	— —	07
• Our Facility	— —	08
• Our Clients & Brands	— —	12
• Projects	— —	14

ABOUT US

At Ebonite Decor, excellence and innovation drive everything we undertake. Since our founding in 2005, we have carefully established our niche in the industry. We specialize in delivering comprehensive interior fit-out solutions, supported by our in-house expertise in civil engineering, MEP, joinery, and metal works. To date, we have completed over 3,000 projects across various sectors, including retail, F&B, FMCG, healthcare, and offices, among others. Our long-lasting partnerships with esteemed international and local clients demonstrate our success, and we are committed to expanding our services to new customers and regions.

OUR VISION

To be a leading provider of turnkey interior fit-out solutions in the UAE and, ultimately, the GCC. We aim to positively impact the world by promoting sustainable practices and be a great place to work. Our ultimate goal is to build a better future for all, and that starts with the work we do today.

OUR MISSION

- 🎯 Deliver high-quality products and services to our clients at all times.
- 🎯 Provide prompt, accurate and cost-effective products and services
- 🎯 Leverage the latest technology to improve all processes and systems, enabling effective teamwork and client satisfaction.
- 🎯 Impart awareness of safety and social responsibility to all our employees through practical training, consultation and communication.
- 🎯 Achieve business excellence by implementing effective management systems safe working environment with regular performance monitoring with emphasis on quality as well as physical & mental health.
- 🎯 Comply with applicable statutory, regulatory, legal and other authority requirements for our products and services.

OUR TEAM

**Ebonite, we bring your visions to life.
“we're crafting the backdrop to your life's most cherished moments”**

At the core of Ebonite is a dedicated group of visionary designers and master craftsmen, the true foundation of our success. This family includes project managers, interior designers, and technical specialists, united by a shared passion, creativity, and commitment. Together, we embody more than a team; we represent a collective dream, driving efficiency, innovation, and excellence into every project we undertake.



OUR ATTRIBUTES

Ebonite, we bring your visions to life.
“we're crafting the backdrop to your life's most cherished moments”



EXPERTISE IN DESIGN & BUILD

For 20 years, Ebonite has defined excellence in interior fitout and custom joinery. We set benchmarks in design and execution, showcasing a profound understanding of Space, materials, and our clients' visions



DEADLINE INTEGRITY



We exceed deadlines, valuing your time and ensuring that project milestones are met with accuracy and efficiency. Our dedication reflects our commitment to reliably fulfilling client expectations.



COMPLETE AUTHORITY APPROVALS

We carefully handle and secure all required approvals from start to finish, ensuring full compliance with regulatory standards.

COMPREHENSIVE SOLUTIONS



From concept to execution, Ebonite provides a wide array of services, from intricate joinery to elegant finishes and tailored furniture. We are dedicated to delivering complete, custom solutions that exceed expectations.

ISO CERTIFICATE



IN-HOUSE METAL SECTION



Fully equipped with specialised machinery for welding, bending, shearing, and rolling. We also have a state-of-the-art CNC laser machine for custom designs and complex patterns. We fabricate various products, including mesh ceiling features, shop fittings, metal furniture, wall claddings, support structures, platforms, and more.

JOINERY SECTION



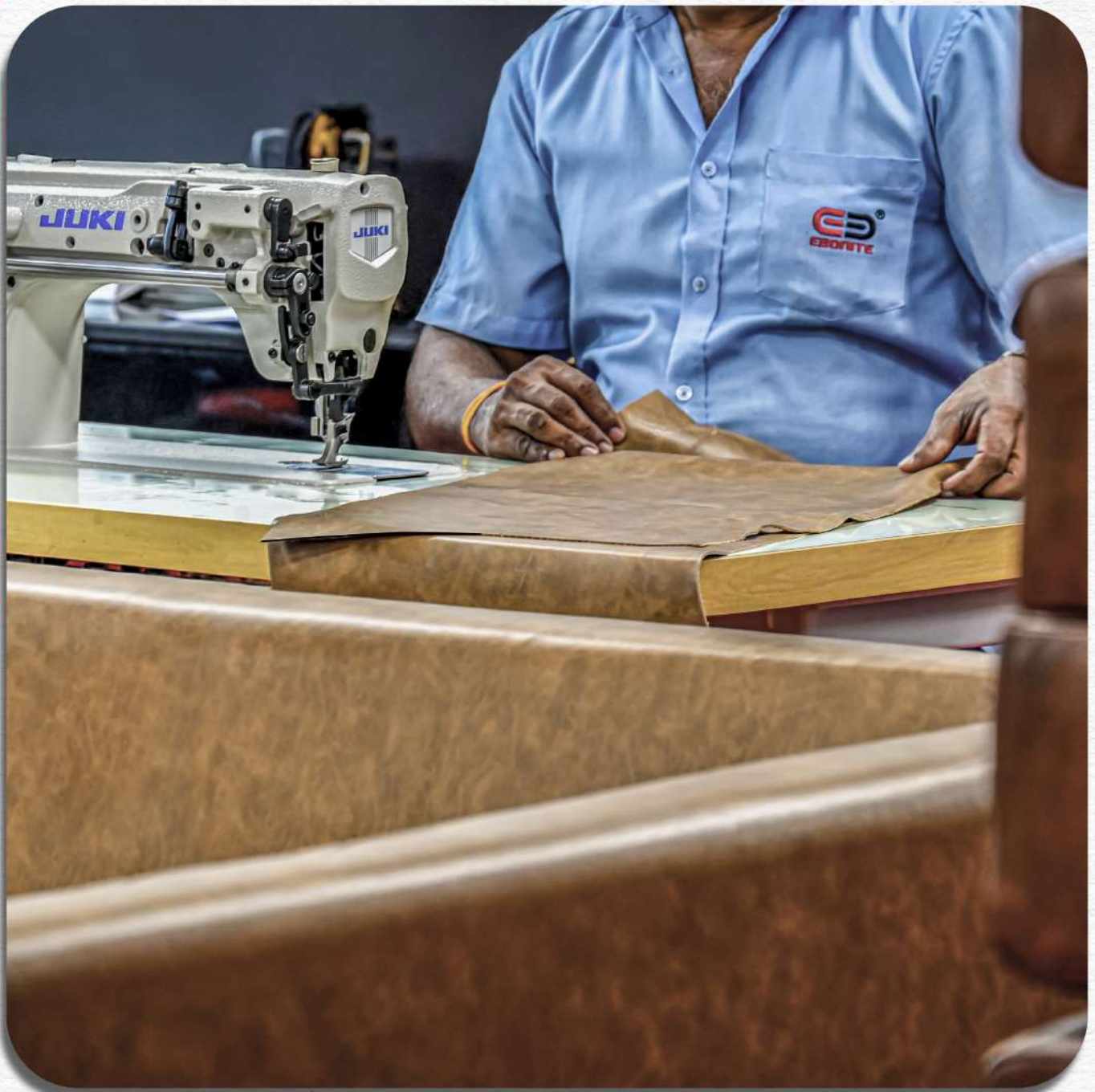
Fully equipped with the latest machinery for performing specialised operations, which assists our skilled carpenters in creating custom-made masterpieces

PAINTING SECTION



Features specialised booths for various operations. This includes a separate sanding booth equipped with an integrated dust collection system, manual primer and final spray booths, an automatic spray line, and an additional booth featuring the latest artificially accelerated paint drying technology.

UPHOLSTERY SECTION



Assists the joinery in creating custom-made seating, accessories, curtains, and more.

OUR CLIENTS & BRANDS



SAMSUNG



Brands For Less

HARMANHOUSE



CONVERSE

GMG

EROS
GROUP



مصرف عجمان
Ajman Bank



THE
Döner & Gyros
HUB



supercare
PHARMACY

OMG Omnicom
MediaGroup



Géant



الرفاعي
AL RIFAI
Since 1948 - ١٩٤٨

Sun&SandSports



APPROVED BY AUTHORITIES

بلدية دبي
Dubai Municipality

تراخيص
Trakhees

سلطة دبي للتطوير
Dubai Development Authority

مدينة دبي الطبية
Dubai Healthcare City



مؤسسة الموانئ والجمارك والمنطقة الحرة
Ports, Customs and Free Zone Corporation

REGISTERED VENDORS FOR

EMAAR

NAKHEEL

ماجد الفطيم
MAJID AL FUTTAIM

CENTRAL MALL

ARABIAN
CENTER

فستيفال سيتي
Festival City

BURJUMAN

مركز الغرير
al ghurair
centre

IBN BATTUTA MALL

Jafza
المنطقة الحرة لجوزاء علم
Jebel Ali Free Zone

ALDAR

Dubai International
Financial Centre

TECOM GROUP

DUBAI
IRPC
FREE
Dubai
Airport
Freezone

Dubai Airports
Connecting the World

ريم مول
Reem Mall



JD SPORTS

JD SPORTS
LOCATION: DUBAI MALL
CATEGORY: RETAIL



CONVERSE

CONVERSE
LOCATION: DUBAI MARINA MALL
CATEGORY: RETAIL



PUMA

PUMA

LOCATION: BURJUMAN CENTRE

CATEGORY: RETAIL



BLOSSOM NURSERY

BLOSSOM NURSERY

LOCATION: THE RANCHES SOUK |

ARABIAN RANCHES II

CATEGORY: EDUCATION



ENBD TANFEETH

ENBD TANFEETH
LOCATION: AL AIN SQUARE 9
CATEGORY: OFFICE



AL RIFAI

AL RIFAI
LOCATION: SOUK AL BAHAR
(DUBAI MALL)
CATEGORY: F&B



OMG

OMG

LOCATION: DUBAI MEDIA CITY
CATEGORY: OFFICE



DONER & GYROS

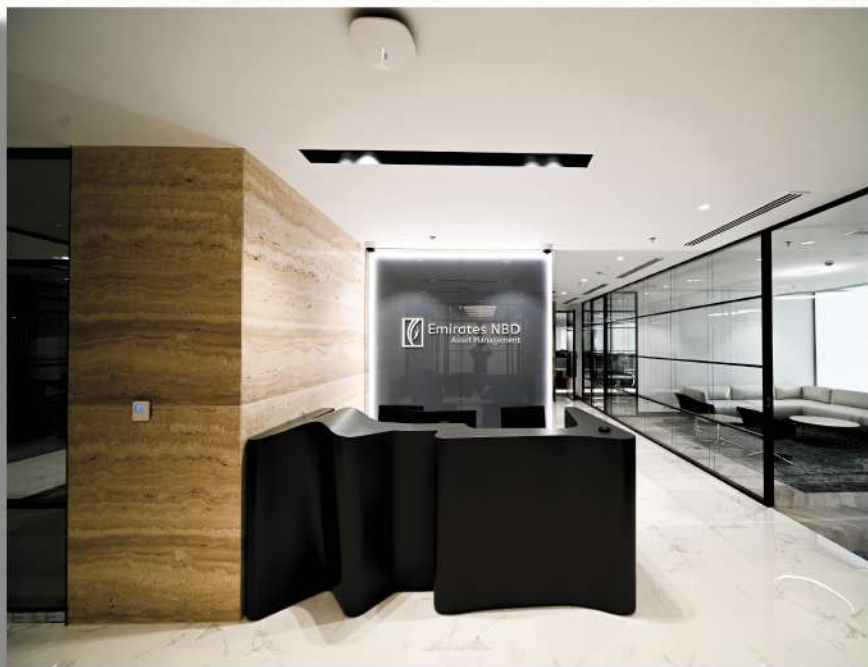
DONER & GYROS

LOCATION: MALL OF THE EMIRATES
CATEGORY: F&B



MEZ CAFE

MEZ CAFE
LOCATION: SILICON CENTER
DUBAI
CATEGORY: F&B



ENBD ASSET MANAGEMENT

ENBD ASSET MANAGEMENT
LOCATION: DIFC
CATEGORY: OFFICE



DOMINO'S

DOMINO'S

LOCATION: AL QANA, ABU DHABI

CATEGORY: F&B



GÉANT

GÉANT

LOCATION: PIXEL, ABU DHABI

CATEGORY: FMCG



SAMSUNG

SAMSUNG

LOCATION: DUBAI HILLS MALL

CATEGORY: RETAIL



NIKE

NIKE

LOCATION: DUBAI AIRPORT

TERMINAL 3

CATEGORY: RETAIL

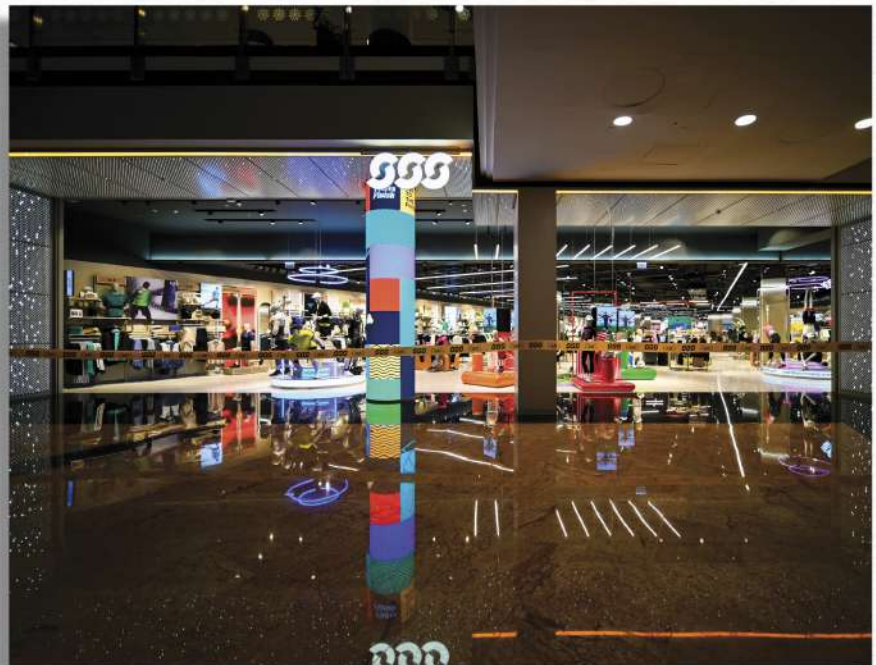


NIKE

NIKE

LOCATION: CITY CENTRE DEIRA,
DUBAI

CATEGORY: RETAIL



SUN & SAND SPORTS (FLAGSHIP STORE)

SUN & SAND SPORTS

LOCATION: MALL OF THE EMIRATES,
DUBAI

CATEGORY: RETAIL



EMIRATES NBD BANK

EMIRATES NBD BANK
LOCATION: IBN BATTUTA MALL, DUBAI
CATEGORY: BANK



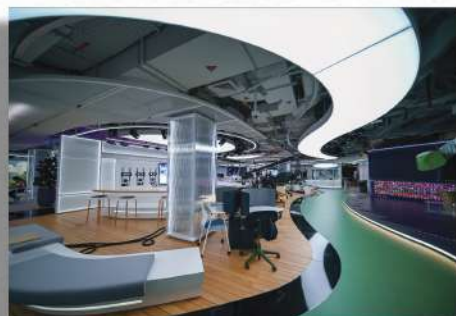
NANDO'S

NANDO'S
LOCATION: BURJUMAN CENTRE,
DUBAI
CATEGORY: F&B



BRANDS FOR LESS

BRANDS FOR LESS
LOCATION: BURJUMAN CENTRE, DUBAI
CATEGORY: RETAIL



BLINX

BLINX
LOCATION: DUBAI MEDIA CITY
CATEGORY: OFFICE



MODERN VET

MODERN VET

LOCATION: AL KHAWANEEJ, DUBAI

CATEGORY: HEALTHCARE

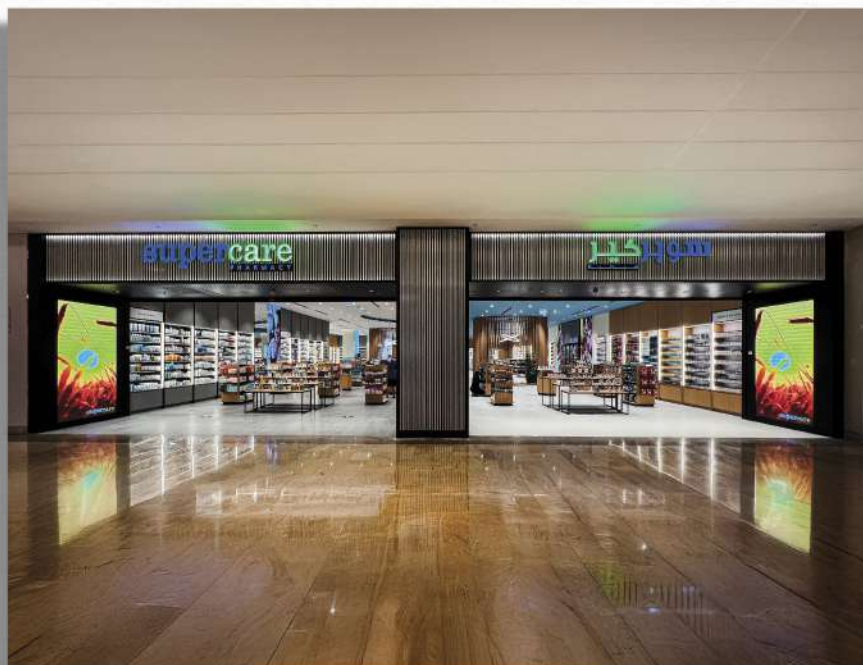


SUNCOAST

SUNCOAST

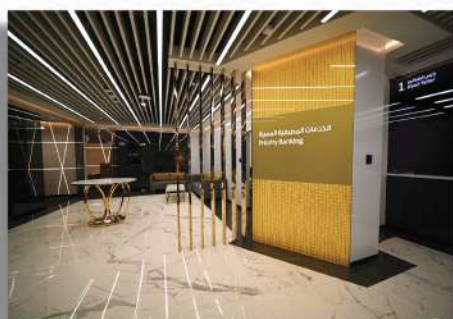
LOCATION: REEM MALL, DUBAI

CATEGORY: RETAIL



SUPERCARE PHARMACY

SUPERCARE PHARMACY
LOCATION: DUBAI MALL
CATEGORY: HEALTHCARE



EMIRATES ISLAMIC BANK

EMIRATES ISLAMIC BANK
LOCATION: NAD AL HAMMAR
(MAIN BRANCH), DUBAI
CATEGORY: BANK



CONTACT US



Industrial Space. Smartest Places.



+971 4 239 2444

ebonited@eim.ae

Plot 5330133 Saih Shuaib 4
Dubai Industrial City - Dubai

www.ebonite.ae