

DOEDIJNS MIDDLE EAST & AFRICA

PROFILE:

Doedijns is a company with over 140 years of experience. The driving force behind Doedijns is the passion for and in-depth knowledge of engineered hydraulic power, motion and control solutions. We design, manufacture, assemble and distribute engineered, cost effective solutions to our global clients in a wide variety of industries, such as the energy, maritime, transport & loading, offshore, or heavy industry.

Doedijns strives after operational excellence, always trying to outperform the competition and help and support clients the best way possible. Whether it involves a system, component, or service, we partner up with our clients and contractors to better understand their issues and provide them with solutions that meet and exceed their requirements.

In the conventional world of hydraulics, reliable and fresh ideas can make the difference. The difference between being an international industry leader or a follower. The passion and drive to be the best creates a corporate culture that let people thrive. It makes people want to be part of the team, it makes Doedijns an employer of choice.

To serve our clients in the Middle East & Africa region effectively & efficiently, Doedijns established a Sales & Service facility in UAE, Ajman (Freezone) as Doedijns Middle East & Africa (DMEA). The ISO 9001:2008 certified full-fledged 1000 ft2 facility represents A-Class manufacturers of Hydraulic & Pneumatic Products across the MEA region. The facility provides sales & support to Doedijns installed base in the region.

We are the exclusive distribution partner for Hawe Hydraulik (UAE, Qatar, Oman, Kuwait, Bahrain, Yemen, Jordan, Iraq & Egypt region). Our exclusive distribution product also includes Firestone, Wandfluh, HPI, Scanreco, Vremec and RMF Systems covering the complete MEA region.

The innovative and efficient products and sub-assemblies are offered to our customer with value added technical expertise & engineering support. Our knowledgeable team brings a wealth of experience and our close relationship with manufacturers ensures that we are efficient to provide technical support quickly and effectively. With our extensive stock and the ability to provide complete solutions and sub-assemblies, our experienced team is ready to provide the support and assistance demanded by our customers.

What distinguishes us?

- Long term, in-depth relationships with our world class product manufacturers.
- Extensive technical knowledge of all products we represent.
- Immediate access to our team who will quickly and efficiently provide the information you require.
- Significant stocks held locally in both components and sub-assemblies



HAWE

HAWE Hydraulik is a leading manufacturer of technologically advanced, high-quality hydraulic components and systems. HAWE Hydraulik supplies compact, energy-saving and durable hydraulic components and systems. These are characterised, for example, by:

- Consistent steel structure (no pressurised cast or aluminium parts)
- Design of the components for high pressures
- Compact design (minimisation of space requirements)
- Zero leakage or verified low leakage
- Approvals for special operating conditions (e.g. ATEX)

HIGH PRESSURE HYDRAULIC VALVES:

DIRECTIONAL SEATED VALVE

Directional seated valves have zero leakage. Depending on the valve type, operation is electromagnetic, pressure-actuated, mechanical or manual. The range includes seated valves and valve combinations.



- Leak-proof performance
- Pressure range up to 700 bar
- Flow range 120 l/min
- Manual, electric, hydraulic, mechanical or pneumatic driven
- Individual Valve, Manifold Mounting combination with sub plates for pipe connection

DIRECTIONAL SPOOL VALVES:

Directional spool valves are a type of directional valve. They control the direction of movement and the velocity of single and double-acting hydraulic consumers. The range includes on/off directional spool valves, proportional directional spool valves and valve combinations.



- Pressure range
- up to 400bar
- Flow range 300 l/min
- Classification: On/Off Directional Spool Valve, Proportional Directional Spool Valve, Throttling Directional Spool Valve & Valve Combinations
- Actuation: Mechanical, Manual, Solenoid, Pressure
- Individual Valve, Manifold Mounting combination, Combination with Hydraulic Powerpack & Proportional Directional Spool valves as per Load sensing principal

PRESSURE CONTROL VALVE:

Pressure control valves influence the system pressure in a specific, pre-determined manner. This is achieved by altering the throttling cross-sections with the aid of mechanical, electrical or hydraulic movements. The range includes pressure-limiting valves, pressure-reducing valves, switching valves and load-holding valves.



- Pressure range up to 700bar
- Flow range 250 l/min
- Classification: Pressure Limiting Valves, Pre-load Valves, Pressure Reducing Valves, Directional Valves; Load holding Valves.
- Screw in Valve for Pipe Connection, Individual Valve for manifold mounting,
- Actuation:



FLOW VALVE

Flow valves influence the flow rate in hydraulic systems. The range includes flow control valves, flow dividers, restrictors and throttle valves.



- Classification: 2 and 3-way flow control valve, Flow Dividers, Restrictors, and Throttle Valves
- Pressure range up to 700 bar
- Flow range up to 400 l/min
- Screw in for Pipe mounting, Manifold Mounting
- Actuation: Mechanical, Tool/Preset, Electro proportional

CHECK VALVE

Check valves block the flow rate in one direction while enabling it in the other direction. The range includes check valves, releasable check valves, pre-fill valves and line rupture protection valves.



- Pressure range up to 700 bar
- Flow range 400 l/min
- Range: Check Valves, Prefill Valves, Line Rupture Protection Valves, Releasable Check valves
- Classification: Valve Insert, Plugin, Screw-in, Individual Valve for Inline installation
- Actuation: Hydraulic, Electro-Hydraulic

HAWE HIGH PRESSURE PUMPS:

Hawe also offers high-pressure solutions for pumps, which are characterised by their high efficiency and durability. These pumps can be combined with a gear pump and ATEX version is an option.



RADIAL PISTON

Radial piston pumps are a type of hydraulic pump. They consist of valve-controlled pump cylinders that are arranged radially.



- Pressure range up to 800 bar
- Flow range up to 91.2 l/min
- Radial Piston Pump (Single & Dual Stage)
- Various designs for water glycol purposes
- Various options for build-up gear pump
- Individual pump, pump/motor combination or power pack

AIR DRIVEN HYDRAULIC PUMP

Air-driven hydraulic power packs are pneumatically driven, reciprocally acting plunger pumps. They operate as pneumatic pressure amplifiers with oscillating movement and automatic stroke reversal control.



- Hydraulic Pressure range up to 1500 bar
- Air Drive Pressure up to 10 bar
- Flow range up to 12 l/min
- Individual pump, pump/motor combination or power pack



AXIAL PISTON PUMP

Axial piston pumps have several pistons that are arranged parallel to the drive shaft. They are available as either variable pumps or constant pumps.



VARIABLE AXIAL PISTON PUMPS V30D, V30E

Variable displacement axial piston pumps adjust the geometric output volume from maximum to zero. As a result they vary the flow rate that is provided to the consumers. Fixed displacement axial piston pumps have a constant geometric displacement and convey a constant flow rate depending on the rotation speed.

- Pressure range 450 bar peak (400 bar continuously)
- Flow range 87 - 190 l/min (1.450 r/min)
- Stroke volume 60 - 130 cm³ per revolution
- Various regulator options and shaft and flange combinations
- Suitable for flange mounting direct on PTO transmission
- Good performance/weight proportion
- High r/min due to good gripping

VARIABLE AXIAL PISTON PUMP V40N

- Pressure range 400 bar peak (380 bar continuously)
- Flow range up to 135 l/min
- Stroke volume 45 cm³ per revolution
- LS or pressure regulator, SAE standard
- Good performance/weight proportion
- Replaceable with various other brands

COMPACT HYDRAULIC POWER PACKS

Thanks to the compact and modular design, low weight and noise level, HAWE compact power packs are suitable for nearly every application, including welding, clamping or handling systems.



The range includes compact hydraulic power packs, standard hydraulic power packs and mounted valves.



- Pressure range up to 700 bar (radial piston pump)
- Flow range up to 13 l/min (radial piston pump)
- Single and double pump design
- Intermittent and continuous operation
- Larger flow possible with a gear pump
- Tank capacity 0.4 - 30 lpm
- Power 0.55 – 7.5 kW
- 1 phase 230 volt and 3 phase 400 volt designs

APPLICATIONS

- Clamp, Jacking, Lifting and Locking systems
- Added features on machinery and presses



WANDFLUH

Wandfluh is known for their high quality standards. Their valve portfolio has evolved over several decades and will be continuously be developed to exceed the rising quality requirements. The keen awareness for quality in combination with the Swiss precision makes Wandfluh one of the leading manufacturers of mechanical precision parts and assemblies. The standard valves have a modular design and can already be configured in a variety of combinations and options, helping us meet our customers' needs as far as possible.

SOLENOID OPERATED SPOOL VALVE



- Low leakage & Long Service Life
- Pressure Range 300 bar
- Flow 250 l/min
- Nominal Size: NG3, NG4, NG6, NG10
- Actuation: Manual, Electrical, Mechanical, Hydraulic, Pneumatic & Integrated Electronics
- Sandwich, Cartridge, Pipe, & Flange Mounting
- Explosion Proof Designs

FLOW CONTROL VALVE



- 2 & 3 Flow Regulator
- 350 bar, 200 l/min
- Sandwich, Cartridge & Flange type
- Actuation: Manual, Solenoid & Integrated Electronics
- Explosion Proof Valves



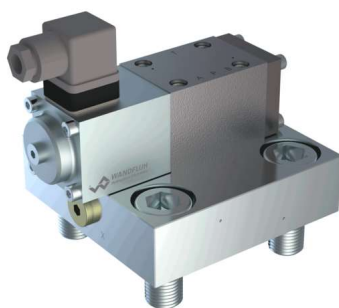
PRESSURE CONTROL VALVE



- 350 bar, 400 l/min
- Sandwich, Cartridge & Flange type
- Actuation: Manual, Solenoid & Hydraulic & Integrated Electronics
- Explosion Proof Valves
- Safety or Pressure Reducing Valves
- Pressure Reduce valve 350 bar, 250 l/min

2-WAY CATRIDGE VALVE:

2-way slip-in cartridge valves are hydraulic logic elements which are installed in control blocks with standardised cavities according to ISO 7368. Their simple and compact construction enables very large volume flows with low pressure loss. These properties reduce power loss and increase efficiency. In addition, costs can be saved by the possibility of switching to smaller nominal sizes. With the modular construction of the individual valve parts and the use of appropriate cover and pilot valve combinations, it is possible to obtain a large number of different functions, for example - Spool valves (start, stop, direction control) - Pressure control valves (pressure limitation, pressure relief, pressure sequence and discharge function) - Non-return valve (spool valves with non-return valve function)



- 630 bar, 3530 l/min
- Sandwich, Cartridge & Flange type
- Actuation: Solenoid & Hydraulic
- Nominal Size: NG 16/25/32/40/50
- Explosion Proof Valves



FIRESTONE:

ACTUATION

Airstroke™



Firestone Airstroke™ Actuators have long been used in the industrial market as pneumatic actuators incorporated into new and innovative machinery designs as well as replacement actuators for traditional pneumatic or hydraulic cylinders. They have advantages over traditional cylinders in that they are durable, operate well in corrosive and abrasive environments, easily accept misalignment and have a high ratio of stroke to collapsed height.

ISOLATION

Airmount™



Isolate-to separate, set or keep apart. Firestone Airmount™ Isolators do just that, providing the highest degree of vibration isolation of any isolator on the market. Firestone Airmount Isolators are versatile and not only work to isolate delicate objects from external vibrations, but are able to support vibrating loads and prevent its energy from disturbing the surroundings. Airmount Isolators reduce structural noise, are available in a wide range of sizes, and extend equipment life through their superior isolation capabilities. Airmount Isolators-a great alternative to conventional coil springs and other types of isolators.



ISOLATION

Marsh Mellow™



Durable, simple to mount, and virtually maintenance free operation-Firestone's Marsh Mellow™ fabric & rubber springs are your solution to vibration and isolation problems. Marsh Mellow springs are fabric reinforced rubber cylinders that do not require air. They will not break, trap particles, corrode or bottom-out, but will accommodate a wide load range and perform consistently. Replace those old-fashioned steel springs with our tough, quiet Marsh Mellow springs for long lasting, low-cost isolation performance.

SUSPENSION

Airide™



Paving a smooth road ahead, we revolutionized transportation when we introduced the Airide™ air spring in 1934. Since that time; we have designed and manufactured more air springs for more applications than any other air spring company in the world. It's why Firestone has earned the right to be called the "World's Number 1 Air Spring." But the proof is on the road.

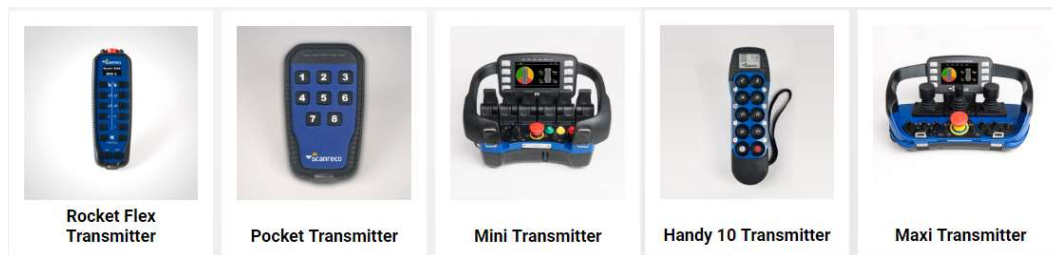


SCANRECO

For over 35 years, Scanreco have developed remote control solutions for the most demanding industries, where safety and reliability are absolutely crucial. Whether you want to remote control large construction cranes, drilling rigs, concrete pumps, forestry machines or truck cranes, we have an efficient solution where the operator can stand on the side and control the machine from a safe distance.

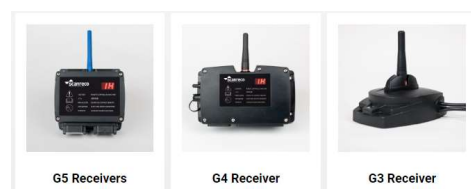
TRANSMITTERS

The transmitters are developed for professionals who use them day in and day out. The controls are sized and carefully positioned to be as convenient as possible and support heavy usage for many hours without causing operator fatigue. The product range includes hand-held pushbutton transmitters as well as different versions with joysticks or levers. Two-way communication enables operator feedback from the controlled machine.



RECEIVERS

The receivers are developed and optimized for different transmitter models and application types. The product family includes traditional digital and proportional outputs as well as fieldbus technology. The receiver units are designed, manufactured, and tested to withstand extreme environmental conditions such as shock, vibration; electromagnetic disturbances and they are potted with epoxy to protect them against dust and water in all forms.



ACCESSORIES

In addition to the standard package you can also order accessories. Many useful accessories like Battery Charger rocket flex, Cradle indication rocket flex, Battery Pack, Case for Pocket, Silicon Cover, Safety accessories for your remote control system are available. The main focus has been to find flexible and useful accessories that are ergonomic and easy to use.



VREMAC CYLINDERS:



Vremac Cylinders BV is fully certified and one of the market leaders in the field of cylinders. This means we provide:

- High end piston rod finishing
- Adjustable end cushioning
- Accumulators and swivel joints
- Positioning measurement systems

Vremac Cylinders BV has gained a reputation for expertise, quality, high standards and service. We can keep lead times short and reliable because all manufacturing can be done in-house. At Vremac Cylinders BV we make use of dedicated metal cutting and robotic welding machines for our operations.

RMF SYSTEMS:

OIL MANAGEMENT:

System reliability and durability are increasingly important concepts in modern technology. The methods of oil management develop fast to control and monitor these concepts. We already know for decades that 80% of all hydraulic failures are caused by poor fluid condition. We offer a complete oil management system to increase the reliability and durability of your system.

AIR CONDITIONERS / DESICCANT BREATHERS

The RMF 'Air Conditioner' deals effectively with solid particles and water vapour. The air is dried by passage through a column packed with Z-R gel granules. The dried air is then passed through a pleated synthetic fibre filter element (replaceable spin-on type) where solid particles are removed, so that the air reaching the reservoir is both clean and dry.

- Reduces cost of ownership
- Reduces oxidation of the oil and bearing surfaces
- Prolongs the life of the equipment and oil (additive package)



- Minimizes equipment downtime
- Our range of desiccant breathers is suited for dehydrating hydraulic power units, lubrication and hydraulic oil tanks, storage drums, gearboxes, diesel fuel tanks and storage tanks for hygroscopic biodegradable fluids



FILTER ELEMENTS

The principal of the RMF Systems filters is based on the unique original filter elements. With a choice of filter fineness down to 0,5 micron they have the capacity to remove even the smallest of dirt particles from the oil. RMF Systems offers a wide range of elements in micron sizes, filter media and fluid compatibility. Combi-elements (water and solid particle retention) complement the unique range.





DOEDIJNS COMPONENTS & SUBASSEMBLIES PORTFOLIO

HYDRAULIC

- HAWE Hydraulik
- Wandfluh
- RMF Systems
- Scanreco
- HPI JTEKT
- Sun Hydraulics
- Hydraforce
- Paccar

PNEUMATIC

- ACE
- AirTAC
- Circle Seal
- Clippard
- ControlAir
- CyPag
- Firestone
- Gast
- Kepner
- Versa

PROCESS

- Alwitco
- BuTech
- Haskel
- Nova Swiss • DEBEM
- Williams
- ZOOK

DOEDIJNS MIDDLE EAST & AFRICA

Warehouse G1-16, Ajman Free Zone, Ajman, United Arab Emirates.

Mob: [+971 52 777 8664](tel:+971527778664)

kumar.Pradeep@vydraulics.com, sales.mea@vydraulics.com

<https://doedijns.com/>

<https://www.vydraulics.com/>