



DECOR N MORE LLC

Interior design

&

Fit out work



Table of
CONTENT

ABOUT US

3

CLIENT'S GOALS

4

DESIGN CONCEPT & VISION

5

PEARL JUMEIRAH VILLA

6

AL MIZHAR VILLA

7

GOLF ESTATE VILLA

8

AL WARQAA VILLA

9

MIRDIFF VILLA

10

AL SEEF MARINA FLAT

11

LANDSCAPE-DUBAI

12

RESTAURANT-DUBAI

13

RESTAURANT-DUBAI

14

Table of
CONTENT

OFFICE-BUSINESS BAY

15

EASY DAY CAFE

16

CONTACT

17

3. About our **COMPANY**

- We focus on designing spaces that are both functional and aesthetic for residential and commercial clients.
- Blending functionality with aesthetics is key to creating spaces that not only look great but also serve their intended purpose effectively.
- We transform interiors into beautiful and harmonious environments.
- Whether it's a cozy home, a boutique hotel, or an office space, our interior designers take into account factors like layout, color schemes, furniture, lighting, and decor to create spaces that reflect the client's vision and lifestyle.
- Our aim is to enhance both the functionality and aesthetic appeal of the space, making it comfortable, inviting, and personalized.



3. About our

PROJECT COORDINATION

- **Site Visits:** Regular visits will be conducted throughout construction to oversee design implementation, provide progress updates, and review financials monthly.
- **FF&E Orders:** Orders for Furniture, Fixtures, and Equipment (FF&E) outside the contractor's scope will be managed by DÉCOR N MORE.
- **End of Project: Schedule of Defects:** A final site visit will result in a Schedule of Defects, which will be submitted to the main contractor for rectification before practical completion.
- **Final Survey:** After the defects are addressed, a follow-up survey will be conducted. The project will be closed, and the property will be handed over for occupation.



4. Client's GOALS



1

- **Aesthetic improvement:** The client aims to enhance the visual appeal of her space by modernizing the decor and incorporating a minimalist and contemporary style. The objective is to create a cohesive look throughout the space that is visually pleasing and reflective of her taste.

2

- **Functional optimization:** Enhancing the functionality of the space is essential. This goal emphasizes better space utilization, creating multifunctional areas, improving storage solutions, and ensuring the design meets specific lifestyle needs. The objective is to make the space more practical and efficient.

3

- **Comfort and livability:** Ensuring the space is comfortable and livable is a key objective. This may involve selecting comfortable furniture, enhancing natural lighting, improving indoor air quality, and creating a layout that promotes ease of movement and relaxation. The goal is to create an environment where the client feels at ease and enjoys spending her time.

4

- **Budget adherence:** This goal involves creating a design plan that stays within the predetermined budget while still achieving the desired aesthetic and functional outcomes. It includes making cost-effective choices, prioritizing expenditures, and finding creative solutions to meet financial limits without compromising on quality.

5. Design CONCEPT

MINIMALIST & MODERN

SIMPLICITY

- Clean lines, uncluttered spaces, and a “less is more” approach.

MINIMAL DECOR

- A few carefully curated accessories - perhaps a single statement artwork.

NEUTRAL PALETTE

- Neutral colors like whites, grays, blacks to allow functional elements to shine.

LIGHTING

- Recessed lighting, pendant lamps, and floor lamps with clean designs.

FUNCTIONAL FURNITURE

- Sleek, functional furniture pieces. For example, modular sofas and multifunctional storage solutions.

MATERIALS

- High quality materials like polished concrete, glass, and metal. Their simplicity enhances the overall look.

MOODBOARD

WORK AREA



FURNITURE



MOOD



LIGHTING



RECEPTION AREA



STONE



MATERIALS



INTERIOR DESIGN TYPES

- 1. MODERN INTERIOR DESIGN STYLE
 - 2. CONTEMPORARY INTERIOR DESIGN STYLE
 - 3. ART MODERNE INTERIOR DESIGN STYLE
 - 4. MID-CENTURY INTERIOR DESIGN STYLE
 - 5. MINIMALIST INTERIOR DESIGN STYLE
 - 6. SCANDINAVIAN INTERIOR DESIGN STYLE
 - 7. SHABBY CHIC INTERIOR DESIGN STYLE
 - 8. ECLECTIC INTERIOR DESIGN STYLE
 - 9. INDUSTRIAL INTERIOR DESIGN STYLE
 - 10. FARMHOUSE INTERIOR DESIGN STYLE
 - 11. ART DECO INTERIOR DESIGN STYLE
 - 12. BOHO – BOHEMIAN INTERIOR DESIGN STYLE
 - 13. COASTAL INTERIOR DESIGN STYLE
 - 14. FRENCH COUNTRY INTERIOR DESIGN STYLE
 - 15. HOLLYWOOD GLAM INTERIOR DESIGN STYLE
 - 16. JAPANDI INTERIOR DESIGN STYLE
 - 17. MEDITERRANEAN INTERIOR DESIGN STYLE
 - 18. ASIAN DÉCOR DESIGN
 - 19. RUSTIC INTERIOR DESIGN STYLE
 - 20. TRADITIONAL INTERIOR DESIGN STYLE
 - 21. TRANSITIONAL INTERIOR DESIGN STYLE
 - 22. MAXIMALIST INTERIOR DESIGN STYLE
 - 23. 1970S REVIVAL INTERIOR DESIGN STYLE
 - 24. ENGLISH COUNTRY HOME STYLE
 - 25. COTTAGECORE INTERIOR DESIGN STYLE
 - 26. GRANDMILLENNIAL INTERIOR DESIGN STYLE
 - 27. MOROCCAN INTERIOR DESIGN STYLE
- AND BEYOND.....

STAGES OF PROJECT

1 – PRE-DESIGN (PD)

The first objective is to get-together with a client and determines overall project vision and goals. Irrespective of the industry being residential, healthcare, industrial, hospitality etc., there are some key areas to discuss the project – scope, features, purpose, and functionality.

- In this phase, we carry out
- Client consultation
- Existing conditions survey and documentation
- Photographs
- Measurements
- Compile existing drawings if any
- Prepare high-level base drawings
- Statement of probable build/construction cost
- Programming space and use
- Code review
- This phase ends with owner's decision to move forward with a project.

2 – SCHEMATIC DESIGN (SD)

In this phase, we do series of rough sketches/drawings that illustrate the basic concepts of the design. Also, initial research of local compliance and regulations are completed at this time.

At the end of this phase, we deliver

- Floor plans of all levels with generic openings and plumbing fixtures
- Exterior building elevations with representative openings and finishes
- Building cross-section
- Typical wall section

And we move to the next phase with the owner's approval.

3 – DESIGN DEVELOPMENT (DD)

Design development collects the results from the schematic design phase and takes them one step further.

This phase involves finalizing the design and specifying items such as materials, window and door locations and general structural details.

At the end of this phase, we deliver

- Floor plans with a proposed basis of design openings and plumbing fixtures
- Overall dimensions
- Structural grid dimensions
- Interior wall dimensions
- Exterior elevations with a proposed basis of design openings and finishes
- Additional building sections
- Wall sections at all typical conditions
- Typical details
- Additional details to establish a basis for design products

Now we have given shape to project's vision through drawings and written specifications.

STAGES OF PROJECT

4 – CONSTRUCTION DRAWINGS (CD)

By now we have a final design. We can begin preparing construction drawings/blueprints, notes, and technical specifications necessary for bidding, construction, and permit application. Construction contractors will use these detailed drawings and specifications to prepare for the construction.

In this phase, we deliver

- Floor plans fully annotated
- All dimensions
- Room, wall, door, and window identification
- Section and detail indicators
- General notes and detailed notes
- Exterior elevations fully annotated
- All building sections required for construction
- Wall sections at all conditions
- Details fully annotated
- Structural plans, details, and notes
- Plumbing plans, schedules, details, and notes
- HVAC plans, schedules, details, and notes
- Electrical power and lighting plans, schedules, details, and notes

And we move to the final phase

5 – CONSTRUCTION

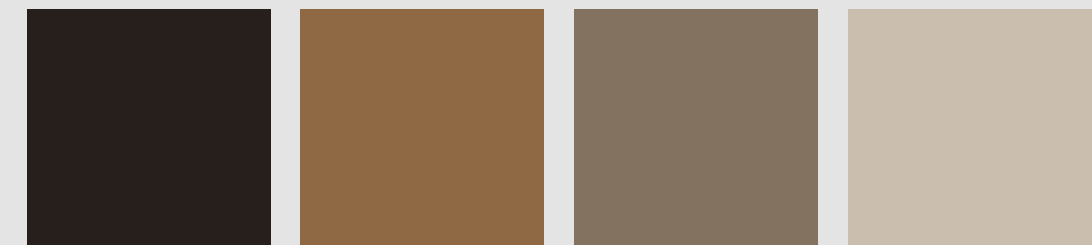
Finally, the construction is underway.

During this phase, we will build as per the design intent.

Also if there are any changes, we discuss changes and options with the owner.

It ensure that alterations are compatible with owner's vision for the project. This is the last phase and at the end of this phase, a project is ready for the use/occupancy.

OUR PROJECTS



Space PLAN

6

VILLA IN PEARL JUMAIRAH

VILLA SIZE - 760 M²

MAJLIS -

DINING ROOM -

LIVING ROOM -

KITCHEN -

BEDROOMS -

BATHROOMS

BALCONIES

LAUNDRY







Space PLAN

7

VILLA IN AL-MIZHAR

VILLA SIZE - 700 M²

MAJLIS -

DINING ROOM -

LIVING ROOM -

KITCHEN -

BEDROOMS -

BATHROOMS

BALCONIES

LAUNDRY







Space PLAN

8

VILLA IN GULF ESTATE

VILLA SIZE - 600M²

LOUNGE -

DINING ROOM -

LIVING ROOM -

KITCHEN -

BEDROOMS -

BATHROOMS

BALCONIES

LAUNDRY







Space PLAN

9

VILLA IN AL-AL-WARQAA

VILLA SIZE - 840 M²

MAJLIS -

DINING ROOM -

LIVING ROOM -

KITCHEN -

BEDROOMS -

BATHROOMS

BALCONIES

LAUNDRY







Space
PLAN

10

VILLA IN AL-MIRDIFF

VILLA SIZE - 920 M²

MAJLIS -

DINING ROOM -

LIVING ROOM -

KITCHEN -

BEDROOMS -

BATHROOMS

BALCONIES

LAUNDRY







Space PLAN

11

FLAT IN AL-SEEF MARINA

FLAT SIZE -450M²

DINING ROOM -

LIVING ROOM -

KITCHEN -

BEDROOMS -

BATHROOMS

BALCONIES

LAUNDRY





Space
PLAN

12

LANDSCAPE-DUBAI

CAFE SIZE - 240M²





Space
PLAN

13

RESTAURANT-DUBAI

FLAT SIZE -550M²

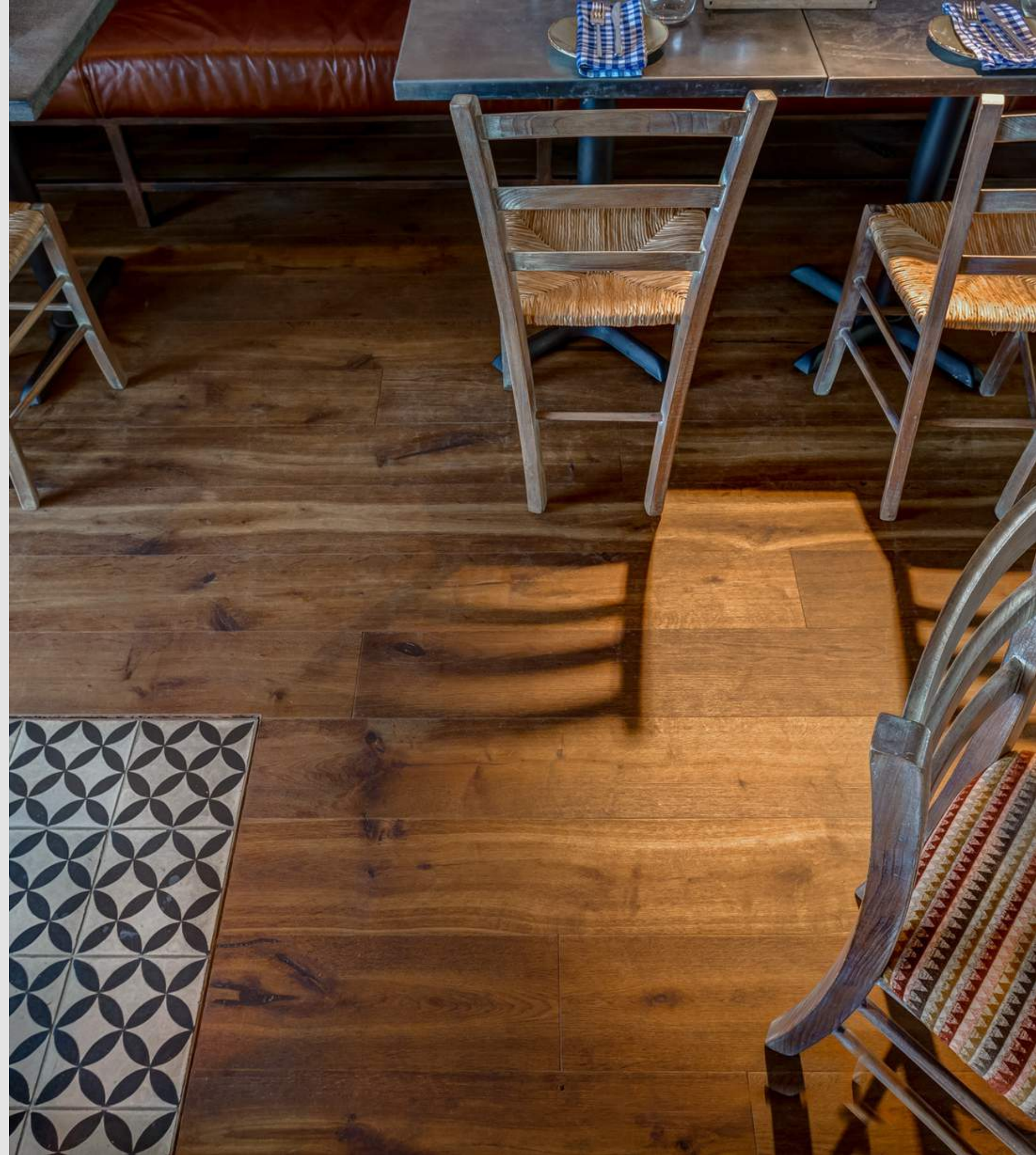
ENTRANCE & RECEPTION AREA

DINING AREA

KITCHEN & FOOD PREP AREA

SERVICE AREAS

STAFF & BACK-OF-HOUSE AREAS







Space
PLAN

14

RESTURANT- DUBAI

VILLA SIZE - 780 M²

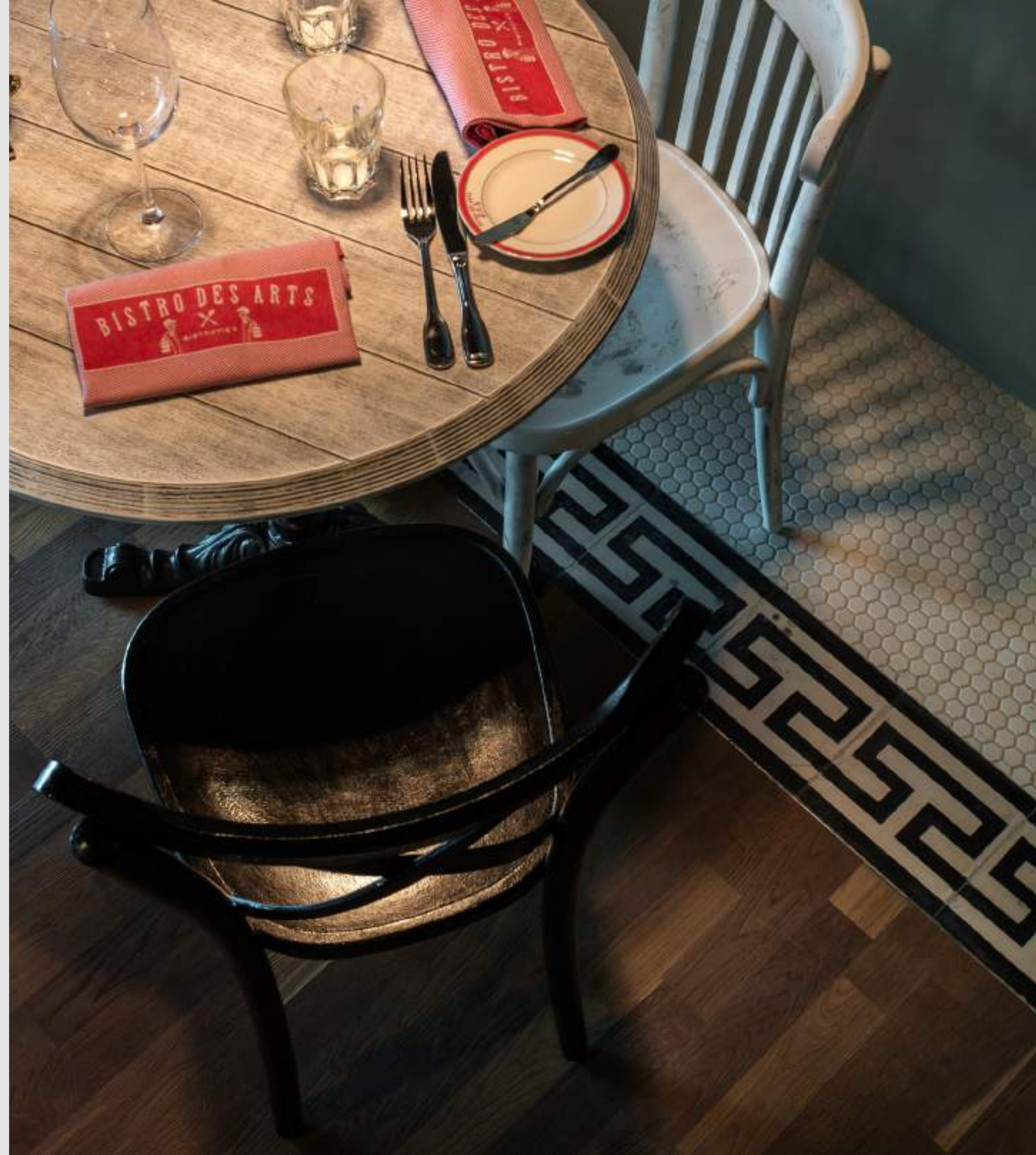
ENTRANCE & RECEPTION AREA

DINING AREA

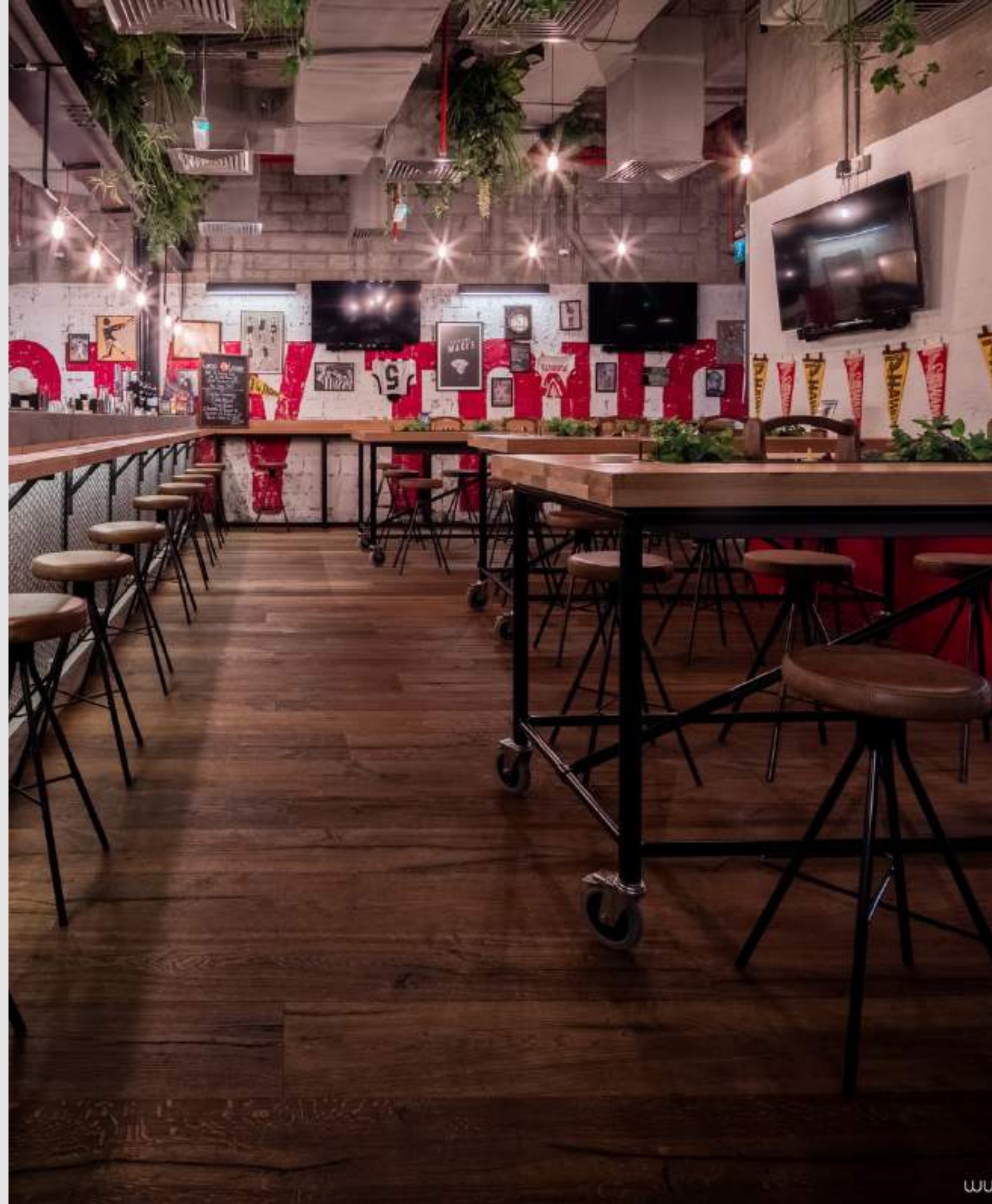
KITCHEN & FOOD PREP AREA

SERVICE AREAS

STAFF & BACK-OF-HOUSE AREAS







Space
PLAN

15

OFFICE-BUSINESS BAY

SHOWROOM SIZE - 452 M²

SHOWROOM-

OFFICE

RECEPTION







Space
PLAN

16

EASY DAY CAFE

CAFE SIZE - 190 M²





17

Reach out

ANYTIME



+971-558871250



info@dnmuae.com



www.dnmuae.com