



QUALITY WITH
EXCELLENCE



ABOUT COMPANY

Cosmo Pumps, a multi-disciplinary fluid management solution company, has proven itself to be a dynamic and progressive enterprise. As a result of our prudent approach. Our products are designed, manufactured in INDIA specifically for the Middle East and North African Region (MENA). Each product is rigorously tested to suit the harsh working and environmental conditions of the MENA region.

True to Cosmo Pumps guiding philosophy, we will fulfill the expectations of our Client & stakeholders, customer in such a way as to simultaneously generate economic, societal and environmental value.

PRODUCT RANGE

- Self-Priming Pumps
- Submersible Pumps & Motors
- Horizontal & Vertical Multistage Pumps
- Centrifugal Monoblock Pumps
- Solar Pumps
- Float Switch
- Pressure
- Wires & Cables
- Pipes

With a multi-winged organization that produces different varieties of pumps and motors that are engineered to perfection. What made the legendary growth possible is the flawlessly maintained value system of the company. Cosmo Pumps, Pressure Controllers, Wires & Cables, to Solar Pumping Systems and Motors, we have meticulously carved every single product involved in fluid management and delivered to our customers., We cater to the flow management needs across various industries and application like.

- Solar
- Waste Water
- Building and Commercial
- Agriculture
- Residential
- Community Water applications

The infallible teamwork, which goes into the manufacture of every product, has brought in perfect recognition for the company as well as its products worldwide.





VISION, MISSION & VALUES

VISION

To be the leader of fluid management solution provider to fulfill the expectation of our clients, Stakeholders, societal & environmental with qualities & values in solution provider.

MISSION

Cosmo pumps to invent to manage with dedicated efforts for benefit of everyone, everywhere with one stop fluid management solution provider in efficient world.



DOMESTIC PUMPS

MONOBLOCK PUMPS

CENTRIFUGAL MONOBLOCK PUMP - RPM 50

Parameters	Range
Power Range (kW)	: 0.5 Hp
Speed	: 2900 rpm
Versions	: Single phase, 230V, 50Hz, A.C. Supply
Class of Insulation	: F
Maximum Discharge	: Upto 2.2 m ³ /h
Maximum Head	: Upto 61m
Max.Suction Lift	: Upto 7 m
Sealing Type	: Mechanical seal
Max.Operting Pressure	: 6 bar



CENTRIFUGAL MONOBLOCK PUMP - RCM 100 HH

Parameters	Range
Power Range (kW)	: 1 Hp
Speed	: 2900 rpm
Versions	: Single phase, 230V, 50Hz, A.C. Supply
Class of Insulation	: F
Maximum Discharge	: Upto 42 m ³ /h
Maximum Head	: Upto 40 m
Max.Suction Lift	: Upto 7 m
Sealing Type	: Mechanical seal
Max.Operating Pressure	: 5.2 bar



CENTRIFUGAL MONOBLOCK PUMP - RCM 150 HH

Parameters	Range
Power Range (kW)	: 1.5 Hp
Speed	: 2900 rpm
Versions	: Single phase, 230V, 50Hz, A.C. Supply
Class of Insulation	: F
Maximum Discharge	: Upto 50 m ³ /h
Maximum Head	: Upto 38 m
Max.Suction Lift	: Upto 7 m
Sealing Type	: Mechanical seal
Max.Operating Pressure	: 5.2 bar



CENTRIFUGAL MONOBLOCK PUMP - RCM 150 LH

Parameters	Range
Power Range (kW)	: 1.5 Hp
Speed	: 2900 rpm
Versions	: Single phase, 230V, 50Hz, A.C. Supply
Class of Insulation	: F
Maximum Discharge	: Upto 48 m ³ /h
Maximum Head	: Upto 30 m
Max.Suction Lift	: Upto 7 m
Sealing Type	: Mechanical seal
Max.Operating Pressure	: 6 bar



CENTRIFUGAL MONOBLOCK PUMP - RCM 200 HH

Parameters	Range
Power Range (kW)	: 2 HP
Speed	: 2900 rpm
Versions	: Single phase, 230V, 50Hz, A.C. Supply
Class of Insulation	: F
Maximum Discharge	: Upto 56 m ³ /h
Maximum Head	: Upto 26 m
Max.Suction Lift	: Upto 7 m
Sealing Type	: Mechanical seal
Max.Operating Pressure	: 6 bar



CENTRIFUGAL MONOBLOCK PUMP - RCM 200 LH

Parameters	Range
Power Range (kW)	: 2 Hp
Speed	: 2900 rpm
Versions	: Single phase, 230V, 50Hz, A.C. Supply
Class of Insulation	: F
Maximum Discharge	: Upto 54 m ³ /h
Maximum Head	: Upto 46 m
Max.Suction Lift	: Upto 7 m
Sealing Type	: Mechanical seal
Max.Operating Pressure	: 6 bar



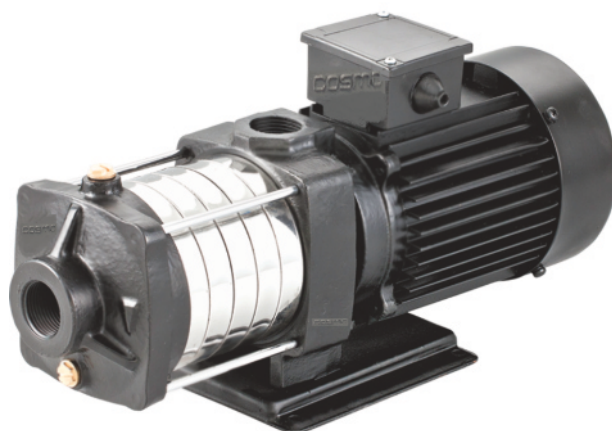
CENTRIFUGAL MONOBLOCK PUMP - RCM 100 SS

Parameters	Range
Power Range (kW)	: 2 HP
Speed	: 2900 rpm
Versions	: Single phase, 230V, 50Hz, A.C. Supply
Class of Insulation	: F
Maximum Discharge	: Upto 54 m ³ /h
Maximum Head	: Upto 46 m
Max.Suction Lift	: Upto 7 m
Sealing Type	: Mechanical seal
Max.Operating Pressure	: 6 bar



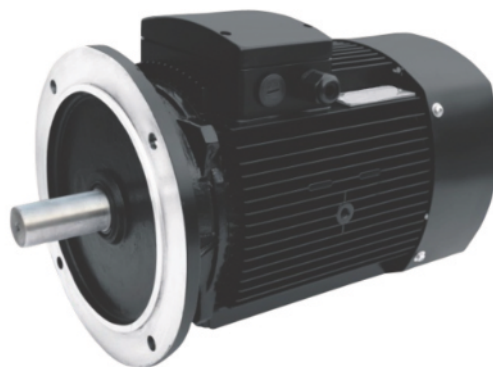
MULTISTAGE PUMPS - CMS 10 40 H

Parameters	Range
Power Range (kW)	: 1 Hp
Speed	: 2900 rpm
Versions	: Single phase, 230V, 50Hz, A.C. Supply
Class of Insulation	: F
Maximum Discharge	: Upto 52 m ³ /h
Maximum Head	: Upto 41 m
Max.Suction Lift	: Upto 9 m
Sealing Type	: Mechanical seal
Max.Operating Pressure	: 6 bar



INDUCTION MOTOR

Parameters	Range
Power Range (kW)	: upto 3.5 kW
Power Range (HP)	: upto 5.0 Hp
Speed	: upto 2900 rpm
Versions	: Single phase, 230V, 50Hz, A.C. Supply
Class of Insulation	: F
Amps	: Upto 8.1



SUBMERSIBLE PUMPS

4" SUBMERSIBLE STAINLESS STEEL PUMPS

C4PSF02 - SERIES

Parameters	Range
Nominal Diameter	: 4" Submersible pumps
Power Range in HP	: Upto 4 Hp
Maximum flow rate in m ³ /h	: Upto 2.7 m ³ /h
Maximum head in metre	: Upto 319 m
Outlet sizes in Inches	: 1½"



C4PSF03 - SERIES

Parameters	Range
Nominal Diameter	: 4" Submersible pumps
Power Range in HP	: Upto 4 Hp
Maximum flow rate in m ³ /h	: Upto 4 m ³ /h
Maximum head in metre	: Upto 360 m
Outlet sizes in Inches	: 1½"



C4PSF05- SERIES

Parameters	Range
Nominal Diameter	: 4" Submersible pumps
Power Range in HP	: Upto 7.5 Hp
Maximum flow rate in m ³ /h	: Upto 6 m ³ /h
Maximum head in metre	: Upto 510 m
Outlet sizes in Inches	: 1½"



C4PSF08- SERIES

Parameters	Range
Nominal Diameter	: 4" Submersible pumps
Power Range in HP	: Upto 10 Hp
Maximum flow rate in m ³ /h	: Upto 10 m ³ /h
Maximum head in metre	: Upto 300 m
Outlet sizes in Inches	: 2"



C4PSF14 - SERIES

Parameters	Range
Nominal Diameter	: 4" Submersible pumps
Power Range in HP	: Upto 7.5 Hp
Maximum flow rate in m ³ /h	: Upto 18 m ³ /h
Maximum head in metre	: Upto 120 m
Outlet sizes in Inches	: 2"



6" SUBMERSIBLE STAINLESS STEEL PUMPS

C6PSF09 - SERIES

Parameters	Range
Nominal Diameter	: 6" Submersible pumps
Power Range in HP	: Upto 30 Hp
Maximum flow rate in m ³ /h	: Upto 21 m ³ /h
Maximum head in metre	: Upto 420 m
Outlet sizes in Inches	: 2" BSP



C6PSF17 - SERIES

Parameters	Range
Nominal Diameter	: 6" Submersible pumps
Power Range in HP	: Upto 50 Hp
Maximum flow rate in m ³ /h	: Upto 31 m ³ /h
Maximum head in metre	: Upto 650 m
Outlet sizes in Inches	: 2" & 2 ½" BSP



C6PSF30 - SERIES

Parameters	Range
Nominal Diameter	: 6" Submersible pumps
Power Range in HP	: Upto 50 Hp
Maximum flow rate in m ³ /h	: Upto 40 m ³ /h
Maximum head in metre	: Upto 490 m
Outlet sizes in Inches	: 3" & 4" BSP



C6PSF46 - SERIES

Parameters	Range
Nominal Diameter	: 6" Submersible pumps
Power Range in HP	: Upto 85 Hp
Maximum flow rate in m ³ /h	: Upto 63 m ³ /h
Maximum head in metre	: Upto 495 m
Outlet sizes in Inches	: 3 " & 4 " BSP



C6PSF60 - SERIES

Parameters	Range
Nominal Diameter	: 6" Submersible pumps
Power Range in HP	: Upto 75 Hp
Maximum flow rate in m ³ /h	: Upto 72 m ³ /h
Maximum head in metre	: Upto 410 m
Outlet sizes in Inches	: 4 " BSP



8" SUBMERSIBLE STAINLESS STEEL PUMPS

C8PSF77 - SERIES

Parameters	Range
Nominal Diameter	: 8" Submersible pumps
Power Range in HP	: Upto 100 Hp
Maximum flow rate in m ³ /h	: Upto 168 m ³ /h
Maximum head in metre	: Upto 400 m
Outlet sizes in Inches	: 5 " BSP



C8PSF95 - SERIES

Parameters	Range
Nominal Diameter	: 8" Submersible pumps
Power Range in HP	: Upto 100 Hp
Maximum flow rate in m ³ /h	: Upto 120 m ³ /h
Maximum head in metre	: Upto 364 m
Outlet sizes in Inches	: 5 " BSP



10" SUBMERSIBLE STAINLESS STEEL PUMPS

C8PSF125 - SERIES

Parameters	Range
Nominal Diameter	: 10" Submersible pumps
Power Range in HP	: Upto 250 Hp
Maximum flow rate in m ³ /h	: Upto 156 m ³ /h
Maximum head in metre	: Upto 485 m
Outlet sizes in Inches	: 6 " BSP



C8PSF160 - SERIES

Parameters	Range
Nominal Diameter	: 10" Submersible pumps
Power Range in HP	: Upto 250 Hp
Maximum flow rate in m ³ /h	: Upto 180 m ³ /h
Maximum head in metre	: Upto 480 m
Outlet sizes in Inches	: 6 " BSP



C8PSF215 - SERIES

Parameters	Range
Nominal Diameter	: 10" Submersible pumps
Power Range in HP	: Upto 100 Hp
Maximum flow rate in m ³ /h	: Upto 275 m ³ /h
Maximum head in metre	: Upto 156 m
Outlet sizes in Inches	: 6 " BSP



SUBMERSIBLE MOTORS

3" SUBMERSIBLE MOTORS - CPSF3 - SERIES

WATER FILLED MOTORS

Parameters	Range
Nominal Diameter	: 3" Dia
Power Range (kW)	: Single Phase : 0.37 -0.93 kW (* Single phase motors are thermally protected)
Speed	: 2880 RPM
Versions	: Single Phase : 230V, 50Hz, 50Hz
Method of Starting	: Single Phase - Capacitor Star Capacitor Run (CSCR), Three Phase - Direct On Line(DOL).
Versions	: Single Phase : 230V, 50Hz, 50Hz
Type of Duty	: S1 (Continuous)
Degree of Protection	: IP 58
Class of Insulation	: F



4" SUBMERSIBLE MOTORS - CPSF4 - SERIES

OIL FILLED MOTORS

Parameters	Range
Nominal Diameter	: 4" Dia
Power Range (kW)	: Single Phase : 0.37 - 2.2kW Three Phase : 0.37 - 7.5kW (* Single phase motors are thermally protected)
Speed	: 2900 rpm
Versions	: Single Phase : 230V, 50Hz, Three Phase : 380V - 415V, 50Hz
Method of Starting	: Single Phase - Capacitor Star Capacitor Run (CSCR), Three Phase - Direct On Line(DOL).
Type of Duty	: S1 (Continuous)
Degree of Protection	: IP 68
Class of Insulation	: F



4" SUBMERSIBLE MOTORS - CPSF3 - SERIES

WATER FILLED MOTORS

Parameters	Range
Nominal Diameter	: 4" Dia
Power Range (kW)	: Single Phase : 0.37 - 2.2kW Three Phase : 0.55 - 5.5kW (* Single phase motors are thermally protected)
Speed	: 2880 rpm
Versions	: Single Phase : 230V, 50Hz, Three Phase : 380V - 415V, 50Hz
Method of Starting	: Single Phase - Capacitor Star Capacitor Run (CSCR), Three Phase - Direct On Line(DOL).
Type of Duty	: S1 (Continuous)
Degree of Protection	: IP 68
Class of Insulation	: F



4" SUBMERSIBLE MOTORS - CPSF4 DC - SERIES

SMART DC MOTOR

Parameters	Range
Nominal Diameter	: 4" Dia
Power Range (kW)	: Single Phase : 0.37 - 3.7kW Three Phase : 0.55 - 5.5kW (* Single phase motors are thermally protected)
Speed	: 2880 rpm
Versions	: Single Phase : 230V, 50Hz, Three Phase : 380V - 415V, 50Hz
Method of Starting	: Single Phase - Capacitor Star Capacitor Run (CSCR), Three Phase - Direct On Line(DOL).
Type of Duty	: S1 (Continuous)
Degree of Protection	: IP 68
Class of Insulation	: F



5" SUBMERSIBLE MOTORS - CPSF5 - SERIES

WATER FILLED MOTORS

<u>Parameters</u>	<u>Range</u>
Nominal Diameter	: 5" Dia
Power Range (kW)	: Single Phase : 0.37 - 2.2kW Three Phase: 0.37 - 7.5kW
Speed	: 2880 rpm
Versions	: Single Phase : 230V, 50Hz, Three Phase : 380V -415V, 50Hz
Method of Starting	: Single Phase - Capacitor Star Capacitor Run (CSCR), Single Phase - Capacitor Star Induction Run (CSIR), Three Phase - Direct On Line(DOL).
Type of Duty	: S1 (Continuous)
Degree of Protection	: IP 58
Class of Insulation	: F



6" SUBMERSIBLE MOTORS - CPSF6 - SERIES

WATER FILLED MOTORS

<u>Parameters</u>	<u>Range</u>
Nominal Diameter	: 6" Dia
Power Range (kW)	: Single Phase : 2.2kW -7.5kW Three Phase: 2.2kW to 30.0kW
Speed	: 2880 rpm
Versions	: Single Phase : 230V, 50Hz, Three Phase : 380V -415V, 50Hz
Method of Starting	: Single Phase - Capacitor Star Capacitor Run (CSCR), Single Phase - Capacitor Star Induction Run (CSIR), Three Phase - Direct On Line(DOL).
Type of Duty	: S1 (Continuous)
Degree of Protection	: IP 58
Class of Insulation	: F



8" SUBMERSIBLE MOTORS - CPSF8 - SERIES

WATER FILLED MOTORS

<u>Parameters</u>	<u>Range</u>
Nominal Diameter	: 8" Dia
Power Range (kW)	: Three Phase : 37 - 63kW
Speed	: 2880 rpm
Versions	: Three Phase : 380V - 415V, 50Hz
Method of Starting	: Direct On Line (DOL), Star Delta (SD)
Type of Duty	: S1 (Continuous)
Degree of Protection	: IP 58
Class of Insulation	: F



9" SUBMERSIBLE MOTORS - CPSF9 - SERIES

WATER FILLED MOTORS

<u>Parameters</u>	<u>Range</u>
Nominal Diameter	: 9" Dia
Power Range (kW)	: Three Phase : 45- 93kW
Speed	: 2880 rpm
Versions	: Three Phase : 380V - 415V, 50Hz
Method of Starting	: Direct On Line (DOL), Star Delta (SD)
Type of Duty	: S1 (Continuous)
Degree of Protection	: IP 58
Class of Insulation	: F



PIPES

UPVC COLUMN PIPES

<u>Parameters</u>	<u>Range</u>
Nominal Dia. in Inches	: 1, 1¼, 1½, 2, 2½, 3, 4, 5 & 6
Ultimate Breaking Load in kg	: 2000-18500
Maximum Permissible Hydrostatic Pressure in kg/cm ²	: 10-35
Max. Installation Depth in m	: 150-450
Adaptors (SS & CI)	: 2" 4" 6" inch



UPVC PLUMBING PIPES

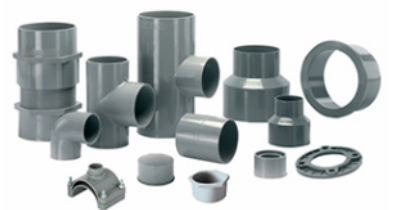
<u>Parameters</u>	<u>Range</u>
Nominal Dia. in Inches	: ¼, ½, 1, 1 ¼, 1½, 2, 2½, 3, 4, 5, 6
Types of Pipes	: ASTM, SCH 40 & SCH 80
Temperature	: Upto 168° F

<u>Parameters</u>	<u>Range</u>
Nominal Dia. in Inches	: ½, ¾, 1, 1 ¼, 1½, 2
Types of Pipes	: SDR 11, SDR 13.5, SCH 40, SCH 80
Temperature	: Upto 82° C



UPVC PRESSURE PIPES & FITTINGS

<u>Parameters</u>	<u>Range</u>
Nominal Dia. in mm	: ¼, ½, 1, 1 ¼, 1½, 2, 2½, 3, 4, 5, 6
Types of Pipes	: ASTM, SCH 40 & SCH 80
Temperature	: Upto 168° F



HDPE PIPES

Parameters	Range
Nominal Dia. in mm	: 20 to 1000
Pressure Rating	: PN 2.5 to PN 16



CASING & SCREEN PIPES

Parameters	Range
Nominal Dia. in mm	: 40 to 250
Types	: CS Pipe CD Pipe
Max installation Depth	: 80 m 400



RR CABLES

Single Core	Three Core	Flexible Cable Drums
0.5 - 1.00 Sq mm	0.5-1.00 Sqmm	2.5-4 Sq mm (3 C)
1.5 - 2.5 Sq mm	1.5 - 2.5 Sq mm	`6-3 Sq mm (3 C)
`4-6 Sq mm	`4-6 Sq mm	16-25 Sq mm (4 C)
`10-16 Sq mm		
25-35 Sq mm		
RYBG - Colors (Black & YG)	RYBG - Colors (Black & YG)	



COSMO PUMPS

Cosmo Pumps, a multi-disciplinary fluid management solution company, has proven itself to be a dynamic and progressive enterprise. As a result of our prudent approach. Our products are designed, manufactured in INDIA specifically for the Middle East and North African Region (MENA).



Phone:

+91 422 297 48 48
+91 422 297 49 49



Email & Website:

care@cosmopumps.com
www.cosmopumps.com



Address:

COSTEC INDUSTRIES
SF.No: 55/2, D.No : 4/5, Chinnavedampatti,
Coimbatore-641049. Tamilnadu, India