



# STEEL-BUILT TRUST

source ◊ stock ◊ supply

[www.bmsteel.ae](http://www.bmsteel.ae)



# INDEX



## LONG PRODUCTS

Universal Beams  
Universal Columns  
American Wide Flange Beams  
European Beams  
JIS Wide Flanges Shape  
JIS Channels  
European Standard Channels (UPN)  
Parallel Flange Channels (PFC)  
MS Equal Angles  
MS Unequal Angles  
Mild Steel Round Bars  
Shafting / Bright Bars  
M S Square Bars



## FLAT PRODUCTS

Hot Rolled Steel Plates  
Mild Steel Flats  
Hot Rolled Steel (Coil/ Strip/ Sheets)  
Cold Rolled Steel (Coil/ Strip/ Sheets)  
Aluminum Plain Sheets  
Aluminum Coils  
Chequered Plates



## PIPES & TUBES

Black & Hot Dipped Galvanized Steel Pipes  
M S Square Hollow Sections  
M S Rectangular Hollow Sections



## GI, PPGI & STAINLESS STEEL

Hot Dipped Galvanized Steel Coils & Sheets  
Prepainted Galvanized Iron Coils  
Stainless Steel Coils & Sheets



## MISCELLANEOUS

MS Gratings  
Expanded Metal

## STEEL-BUILT TRUST

Established in 2020 in Sharjah, UAE, BMS Steel is a leading building material trading company specializing in the stocking and distribution of structural steel.

Over time, we have grown into a premier supplier of structural steel products, with our main office and distribution facilities located in the Sajja Industrial Area of Sharjah. To better serve our clients in the UAE and neighbouring markets across the Middle East and Africa, we also operate ancillary offices and warehouses in various locations within the GCC.

We offer a comprehensive range of long, flat and tubular steel products in multiple grades and specifications, sourced from globally renowned mills. Our products meet the diverse needs of fabricators in industries such as Oil and Gas, Construction, Infrastructure, Pre-Engineered Buildings, Machinery, Equipment, Auto Body Fabrication, and other ancillary sectors.

Our dedicated team includes a knowledgeable sales unit, backed by an efficient logistics and back-office team, all guided by capable management. At BMS Steel, we are committed to delivering high-quality products at competitive prices while upholding exceptional service standards for our valued clients.



**2020**

Year of  
Establishment



**1,365+**

Satisfied  
Customers



**13+**

Our Global  
Footprint

“Our motto  
has always been  
**Safety  
Speed &  
Quality,**”

### MISSION

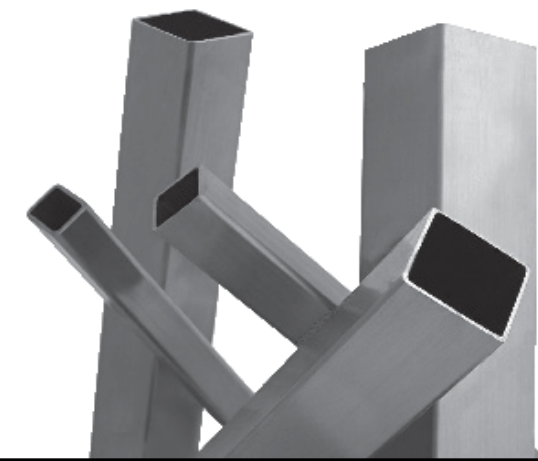
To uphold our reputation as a trusted, customer-centric provider of structural steel solutions.

### VISION

To set new benchmarks in customer service by consistently exceeding expectations in the steel industry.

### VALUES

Ethical  
Honourable  
Synergistic  
Reliable







## LONG PRODUCTS

### BEAMS

Type	<b>UNIVERSAL BEAMS</b>
Size range	127 x 76 mm to 914 x 419 mm
Standard	EN10025 - S275JR/ S355J0/ S355J2, ASTM A36/ A572 Gr. 50/ A992
Type	<b>UNIVERSAL COLUMNS</b>
Size range	152 x 152 mm to 356 x 406 mm
Standard	EN10025 - S275JR/ S355J0/ S355J2, ASTM A36/ A572 Gr. 50/ A992
Type	<b>AMERICAN WIDE FLANGE BEAMS</b>
Size range	W 6" x 4" to W 36" x 12"
Standard	EN10025 - S275JR/ S355J0/ S355J2, ASTM A36/ A572 Gr. 50/ A992
Type	<b>EUROPEAN BEAMS</b>
Size range	IPE - 80 to 600 mm, IPEAA - 100 to 200 mm, HE A/ HE B - 100 mm to 600 mm
Standard	EN10025 - S275JR/ SS400/ S355J0/ S355J2/ A572 Gr. 50
Type	<b>JIS WIDE FLANGE BEAMS</b>
Size range	I Beam - 150 x 75 mm to 900 x 300 mm H Beam - 100 x 100 mm to 400 x 400 mm
Standard	EN10025 - S275JR/ ASTM A36/ A572 Gr. 50/ SS400/ Q235B

### CHANNELS

Type	<b>JIS</b>
Size range	50 x 25 mm to 380 x 100 mm
Standard	EN10025 - S275 JR/S355 JR/ S355 J0/ SS400
Type	<b>UPN</b>
Size range	50 mm to 400 mm
Standard	EN10025 - S275 JR/S355 JR/ S355 J0/ SS400
Type	<b>PFC</b>
Size range	100 x 50 mm to 430 x 100 mm
Standard	EN10025 - S275 JR/S355 JR/ S355 J0/ SS400

### MS ANGLES

Type	<b>EQUAL</b>
Size range	20 x 20 mm to 200 x 200 mm
Standard	EN10025 - S275 JR/S355 JR/ S355 J0/ SS400
Type	<b>UNEQUAL</b>
Size range	75 x 50 mm to 200 x 100 mm
Standard	EN10025 - S275 JR/S355 JR/ S355 J0/ SS400

### MS BARS

Type	<b>ROUND BARS</b>
Size	6 mm to 100 mm
Type	<b>SHAFTING/ BRIGHT BARS</b>
Size	6 mm to 100 mm
Type	<b>SQUARE BAR</b>
Size	10 mm to 60 mm
Standard	ASTM A36/ SS400/ S275 JR/ S355 JR







## FLAT PRODUCTS

### HR SHEETS/ COILS & CHEQUERED SHEETS

Type	<b>SHEETS</b>
Size range	2.7 mm to 12 mm
Standard	1219 x 2438 mm/ 1500 x 6000 mm

Type	<b>COILS</b>
Size range	1.0 mm to 12 mm
Standard	1219 x1500 mm / 2000 mm2

Type	<b>CHEQUERED SHEETS</b>
Thickness	1.8 mm to 12 mm
Width	1219 x 2438 mm / 1500 x 6000 mm
Grade	S235/ S275/ ASTM A36/ SS400

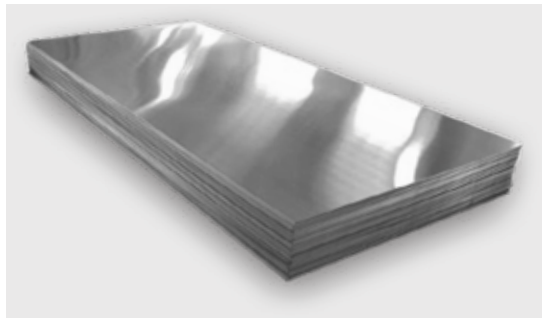


### ALUMINUM SHEETS/ COILS

Type	<b>PLAIN SHEETS</b>
Thickness	0.4 mm to 10 mm
Width	1219 x 2438 mm
Alloy	AA1100/ AA1200/ AA3003/ AA5005

Type	<b>COILS</b>
Thickness	0.5 mm to 3 mm
Width	1219 x 1500mm
Alloy	AA1100/ AA1200/ AA3003

Type	<b>CHEQUERED SHEETS</b>
Thickness	1.8 mm to 10 mm
Width	1219 x 2438 mm
Alloy	AA1100



### HOT ROLLED STEEL PLATES

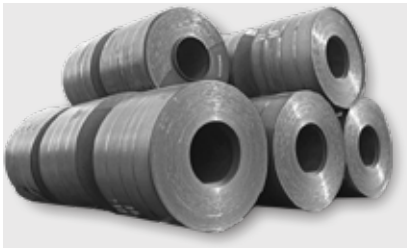
Type	<b>HOT ROLLED STEEL PLATES</b>
Thickness	4 mm to 60 mm
Width	2 M/ 2.5 M/ 3.05 M
Alloy	6 M/ 12 M
Standard	
Commercial	ASTM A36/ S275 JR/ S355 JR/ S355 J0
Offshore	S355J2/ S355K2/ AP12H50
Boiler/Pressure Vessel	ASTM/ ASME 60/ 65/ 70 (Normalized/ NAC)
Shipbuilding Grade	ABS : A/ B/ C/ AH32/ AH36/ EH36



## GI, PPGI & STAINLESS STEEL

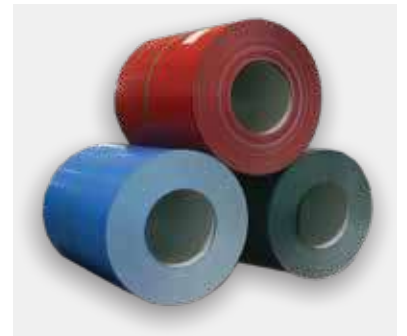
### GALVANIZED COILS & SHEETS

Type	<b>REGULAR/ ZERO SPANGLE</b>
Thickness	0.28 mm to 4.0 mm
Width	1219 x 1500 mm
Coating	Z120/ Z180/ Z275
Grade	ASTM A-653



### PREPAINTED GALVANIZED IRON (PPGI) COIL

Type	<b>PREPAINTED STEEL COIL/ SHEET</b>
Thickness	0.12 mm to 2.00 mm
Width	350 - 1250 mm
Coil ID	610/ 508
Type of Base Metal	Hot - Dip Zinc Coated
Standard	EN10142/ EN10147/ EN10292/ JIS G3302/
Steel Grade	ASTM A653, DX51D+Z, DX52D+Z, DX53D+Z/ S280GD+Z, S350D+Z, S550GD+Z/ SGCC, SGCD, SGC340/ CS Type C, CS Type A, CS Type B, FS Type A/ FS Type B, SS275, SS550, SS340 class 1
Colours	RAL, RAL 9002, RAL 1001



### STAINLESS STEEL

Type	<b>COILS &amp; SHEETS</b>
Thickness	0.30 - 50 mm
Width	1219 x1250 mm/ 1500x 2000 mm
Coil ID	610/ 508
Grade	316 /304L/ 304L/ 310 /430S
Finishes	Hot Rolled No. 1 finish, 2B finish, Brush finish, Hairline finish, Mirror finish.



### MISCELLANEOUS PRODUCTS

Type	<b>PLAIN OR SERRATED</b>
Size	0.9 M x 6 M
Load Bearing Bar	20 x 3 mm to 50x 5 mm
Pitch Size	30 x 100 mm/ 40 x 100 mm

### EXPANDED METAL

Specification	<b>JIS G3131 SPHC</b>
Size	4' x 8'
Thickness	1.5 mm to 8 mm



\* Complete product data guide available on request

\* Complete product data guide available on request



TUBES & PIPES

BLACK & HOT DIPPED GALVANIZED STEEL PIPES

Type **BLACK & HOT DIPPED GALVANIZED STEEL PIPES**  
Size range 1/2" to 24"  
Standard EN10225 : 2004, ASTM A53 Gr. A SCH 40, ASTM A53 Gr. B SCH 40

Type **COILS**  
Size range 1.0 mm to 12 mm  
Standard 1219 mm/ 1500 mm/ 2000 mm

Type **CHEQUERED SHEETS**  
Thickness 1.8 mm to 12 mm  
Width 1219 x 2438 mm/ 1500 x 6000 mm  
Grade S235/ S275/ ASTM A36/ SS400

SEAMLESS PIPES

Type **MILD STEEL PIPES**  
Size range 1/2" to 12"  
Standard ASTM A106/ ASTM A53 Gr. B SCH 40

MS SQUARE HOLLOW SECTIONS

Type **COLD FORMED WELDED SQUARE TUBES**  
Size range 19 x 19 mm to 400 x 400 mm  
Standard S235 JRH/ S275 JOH/ S275 J2H/ S355 JOH/ S335 J2H

MS RECTANGULAR HOLLOW SECTIONS

Type **COLD FORMED WELDED SQUARE TUBES**  
Size range 40 x 20 mm to 500 x 300 mm  
Standard S235 JRH/ S275 JOH/ S275 J2H/ S355 JOH/ S335 J2H

\* Complete product data guide available on request



STEEL GRADES

Structural Steel grades according to the following national and international standards can be supplied :

STRUCTURAL STEEL					DESIGNATION
EN 10025	ASTM	JIS G 3101 JIS G 3106	CSA G 40 - 21	BS 4360	
Fe 360 B	-	-	-	-	S 235 JR
Fe 360 B FN	-	-	-	-	S 235 JRG 2
Fe 360 C	-	-	-	-	S 235 JO
	A 36	SS 400	260 W	-	
	A 36	SM 400 A1B/C	-	-	
Fe 430 B	-	SS 400	-	43 B	
Fe 430 C	-	-	-	-	
Fe 430 D1	-	-	-	-	
Fe 430 D2	-	-	-	-	
Fe 510 B	A 572 Gr. 50	SS 490	350 W	50 B	S 355 JR
Fe 510 C	-	-	-	-	S 355 JO
Fe 510 D1	-	-	-	-	S 355 J 2 G3
Fe 510 D2	-	-	-	-	S 355 J 2 G4
Fe 510 DD1	-	-	-	-	S 355 K 2 G3
Fe 510 DD2	-	-	-	-	S 355 K2 G4



## STEEL SPECIFICATIONS

AMERICAN STANDARD	EUROPEAN STANDARD	JAPANESE STANDARD	SOUTH AFRICAN STANDARD	YIELD STRENGTH	TENSILE STRENGTH
Lower Strength (for workability and weldability)					
ASTM A 283 Gr. C	EN 100T25 S235JR	JIS G3101 SS300	SABS 1431 GR. 420	235 MPa min	340 - 470 MPa
	DIN 17100 RSt 37-2				
	BS 4360:Gr 40A/B/C		WA/C		
Normal Strength (for general use)					
ASTM A 36	EN 10025 S275 JR	JIS G3101 SS400	SABS 1431 GR 300WA/C	257 MPa min	
	DIN 17100 Rst 44-2				
	BS 4360:Gr 43A/B/C				
Higher Strength Microalloyed Steel					
ASTM A572 GR. 50	EN 10025 S355JR	JIS G3101 SS490	SABS 1431 GR 350WA/C	355 Mpa min	490-630 MPa
	DIN 17100 RSt 52-2				
	BS 4360:Gr 50A/B/C				
Weathering Steel - for improved corrosion resistance (Other Standards)					
			COR - TEN / A	345 MPa min	480 MPa min

## QUALITY POLICY

We are dedicated to offering a comprehensive range of high-quality, reliable structural steel and allied products at competitive prices, supported by efficient, flexible, and consistent services that not only meet but exceed our customers' expectations.

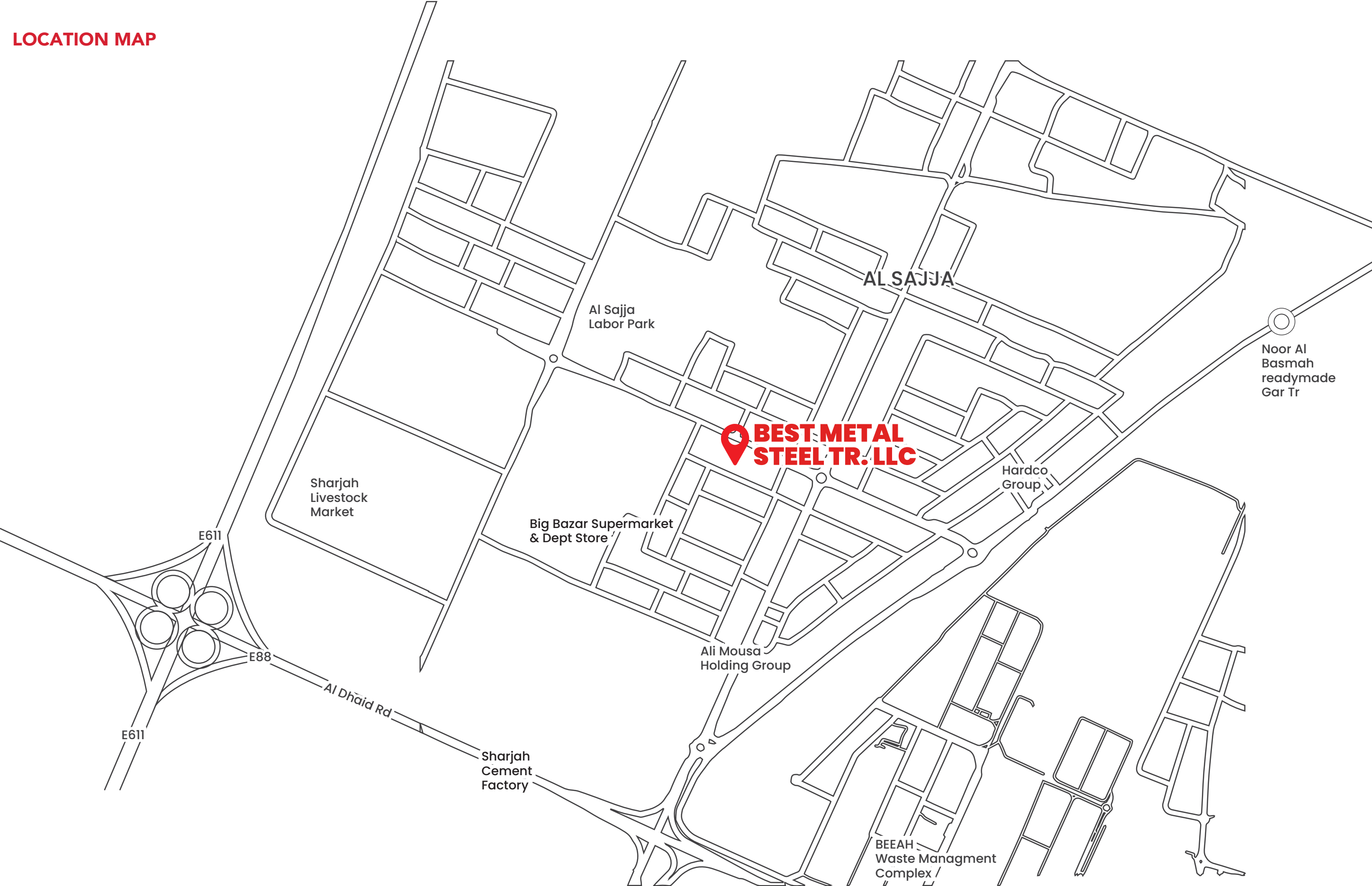
To uphold our commitment to quality, we have implemented an extensive quality assurance system that ensures we maintain the highest standards. This system is built on the following principles:

- Ethical workmanship and customer satisfaction are our top priorities.

- We guarantee that our products and services are delivered on time and at the agreed-upon price.
- Our goal is to consistently meet customer requirements promptly and to handle complaints professionally, quickly, and courteously.
- Continuous improvement is essential to provide our customers with superior products and services.
- We evaluate the performance of our management systems, practices, products, suppliers, customers, and employees to ensure excellence.

“QUALITY IS AN UNCHANGED HABIT THAT BUILDS & STRENGTHENS CHARACTER.”

LOCATION MAP







#### **DUBAI**

Ras Al Khor 02. Dubai, UAE

t: +971 4 337 9419, +971 50 949 3903

#### **SHARJAH**

Al Sajja, Industrial Area

Sharjah, UAE

t: +971 6 525 7860

e: [sales@bmsteel.ae](mailto:sales@bmsteel.ae)

w: [www.bmsteel.ae](http://www.bmsteel.ae)

