



بيت المشرق
Prefabricated
Buildings



BAIT-AL-MUSHRIQ
METAL PREFABRICATED
BUILDINGS MANUFACTURING L.L.C

Prefab Portable Houses
Kitchen, Pantry, Mosque, Portable Open Hall Modified Containers

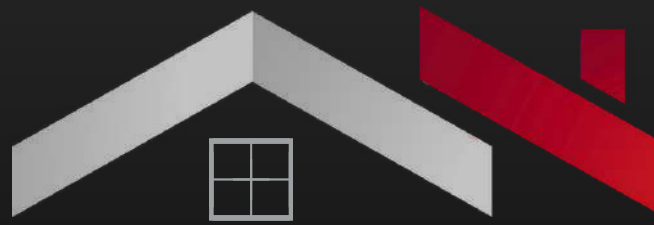
📍 Near Gas Plant, Al Sajja Industrial Area Sharjah, United Arab Emirates

✉ salesbaitulmashriqprefab@gmail.com

📷 Baitulmashriqprefab

📌 Baitulmashriqprefabhomes

baitulmashriqprefab



بيت المشرق
Prefabricated
—Buildings—



BAIT-AL-MUSHRIQ
METAL PREFABRICATED
BUILDINGS MANUFACTURING L.L.C

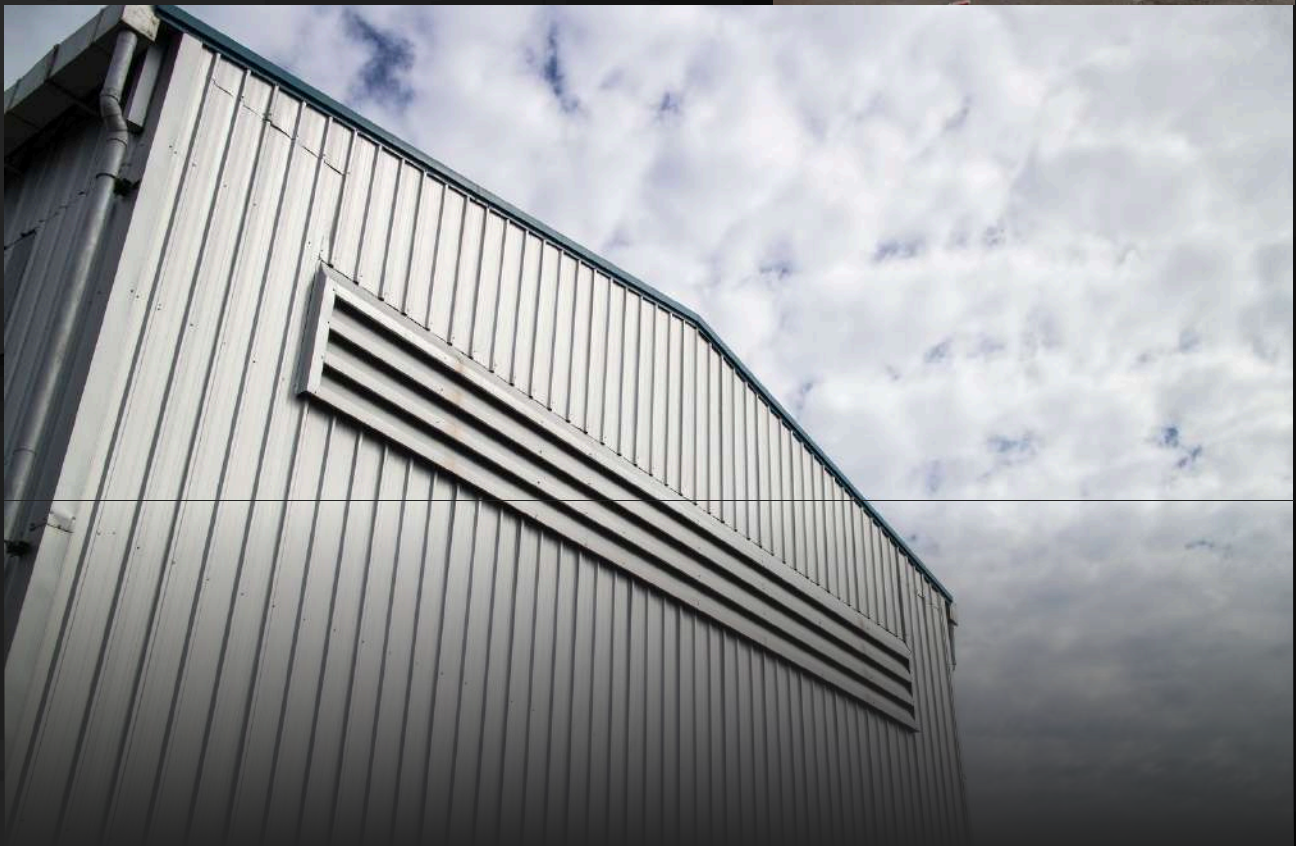


CONTENTS

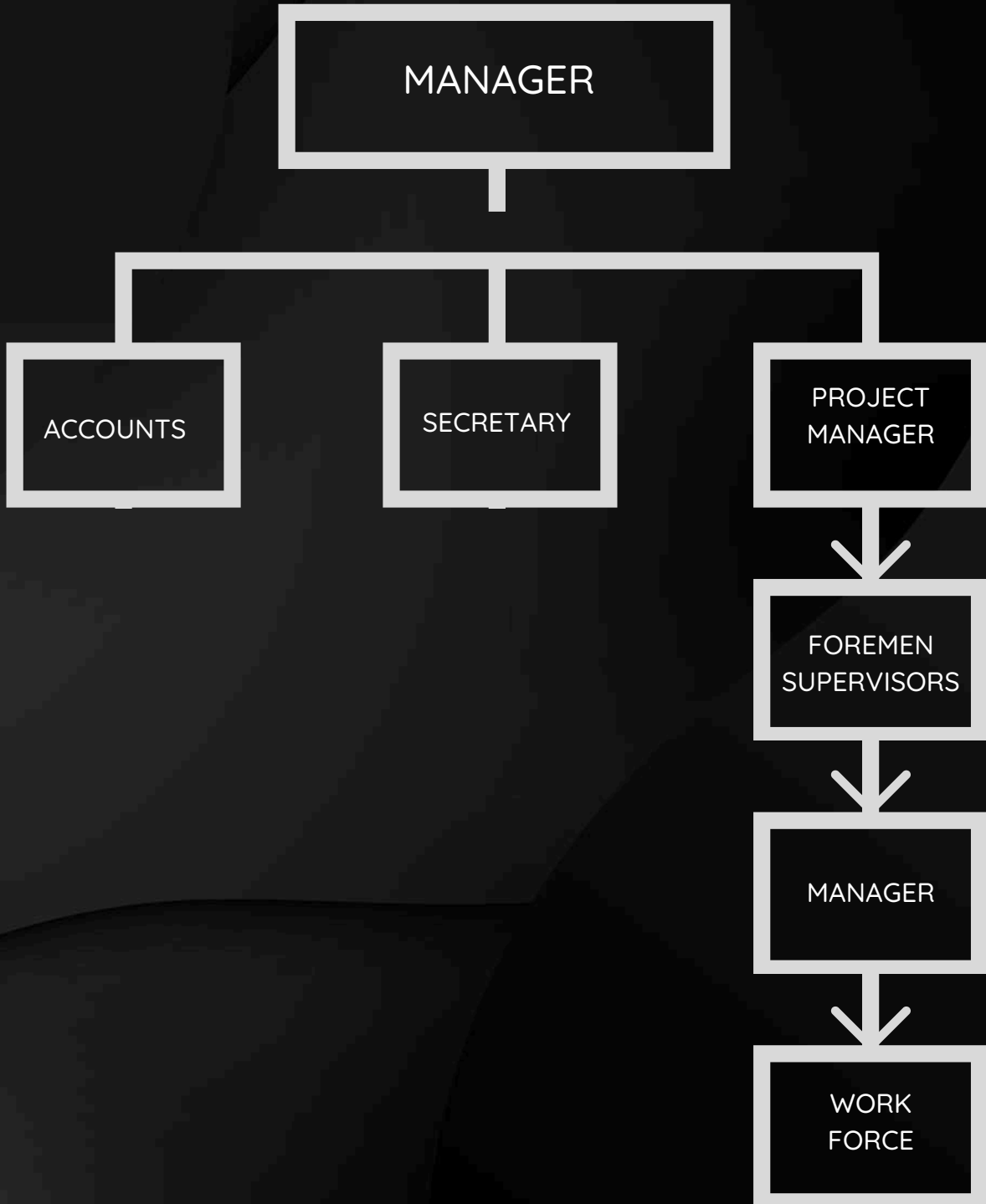
-
- 05** ABOUT US
-
- 06** COMPANY CHART
-
- 07** GM MESSAGE
-
- 08** OUR MISSION & VISION
-
- 09** OUR SERVICES
-
- 10** SPECIFICATIONS
-
- 12** PRODUCTS
-
- 20** OUR POLICIES
-
- 23** LISCENSE
-
- 24** PORTFOLIO
-
- 27** OUR CLIENTS
-
- 28** CONTACT US
-

About Us

Bait-al-Mashriq Prefabricated Buildings LLC is one of the industry's leading suppliers of portable cabins including prefabricated house, fire rated cabin, portable toilet cabin/ablution unit, flat packs container, site office cabin, security cabin & labour camp. Our portable buildings are manufactured with a focus on durability, quality, and strength. All of our products exceed industry standards as well as building code requirements. We have standard designs or can customize a solution to meet the needs of any client.



COMPANY CHART



GM MESSAGE

First it's my pleasure to have this incredible team who strive to stick to the top of the prefabricated houses industry. From the birth of Bait-al-Mashriq Prefabricated Buildings LLC, we have put our goal to be No.1 in prefabricated houses in UAE. With high manufacturing capacity and product quality, based on local and international standards. Commitment to our motto: "CONSCIENTIOUS PREFABRICATE THE FUTURE." It leads us to pursuit the latest products, materials, and technology in this field.

Most importantly, dependent on our most crucial features of Bait-al-Mashriq Prefabricated Buildings LLC, which is the human resources. It consists of experts, engineers, designers, technicians, electricians, painters, plumbers, and artisans who work as one coherent team.

So we follow "Open Door Policy" and problem-solving of our team in human respectful manner procedures. Certainly, we believe they are our most efficient and meaningful to develop strong bonds between our team.

Bait-al-Mashriq Prefabricated Buildings LLC's team is dedicated to serving the best of our customers. That drives our long-term relationship with customers. Beside, it enables us to connect with them on a professional and personal level.



بيت المشرق
Prefabricated
Buildings

Bait-al-Mashriq Prefabricated
Buildings LLC



Our Mission & Vision

Our mission is to become the #1 prefab building manufacturing partner to all construction, oil & gas, MEP, warehousing, marine, education and health industry to excel with distinction and reliability. With focus on continuous innovation, sustainability, high quality and customer service and commitment, we pursuit to earn a distinction by developing client's partnerships for modular building requirements in UAE and MENA region.

Why Choose Us?

- ✓ Our team understands the client requirements and market trends.
- ✓ We take time to understand your needs and goals.
- ✓ We've helped many happy clients with their prefab buildings needs.

Our Services

We are specialized in portable cabins / containers / refurbished cabins / temporary site facilities such as hoarding fencing, Labour camps, site offices cabins, accommodation cabins, security cabins, toilets cabins, storage containers, customized steel structures requisitions for your current or upcoming jobs.

Prefabricated Cabins



Containerized Units



Flat Packs Containers



Alum. Security Cabins



SPECIFICATIONS

BASE

The base is made from MS beams (120x64x6mm). The G.I sections shall behaving minimum yield strength of 346N/mm² and galvanized coating of 275g/m² and remain unpainted. The I-Beam shall be wire brushed cleaned, coated with 2 coat of red oxide primer and painted with one coat of alkyd- based enamel paint of our standard color

FLOOR

The floor of the unit is made by 18mm cement board is fixed with heavy duty C.S.K screws. Dry Area: 1.6mm thick heavy PVC vinyl sheet. Wooden skirting 5cm high with provided. Wet area offices: 1.6mm thick heavy-duty PVC vinyl sheet, Wooden skirting polished and painted is provided. Wet area ablution: 2mm thick GRP waterproof flooring.

WALLS

External side of the frame shall be faced with 6mm cement board painted with weatherproof texture paint. wall framing shall be LGS- Light Gauge Steel framing (63mm x 38mm)- the wall frame shall be produced by pinnacle LGS framing system. 12mm thick gypsum board finished with washable emulsion paint. 6mm thick cement board with oil paint for water proofing. 50mm thick glass wool with 12kg/m³ density. Corners and top shall be extremely protected by MS angle bolted into the wall panels.

SPECIFICATIONS

ROOF

Trusses shall be LGS-Light Gauge steel framing(63mmx38mm). The roof trusses shall be produced by pinnacle LGS framing system. Roof covering shall be single skin G.I Profile sheet with 0.5mm thickness shall be fixed upon purlins of G.I. furring channel with self-tapping screw

WARRANTY

Our cabins come with one-year warranty against any manufacturing defects and water leakage. Damage to any part of the unit due to bad quality or any workmanship defects will be rectified by replacing or repairing. Warranty becomes void and null in case of damage is caused due to manufacturer's warranty and these are not covered under our company's warranty. Bulbs, Rods, flexible pipes, exhaust fan & water heater are not covered under our company warranty.

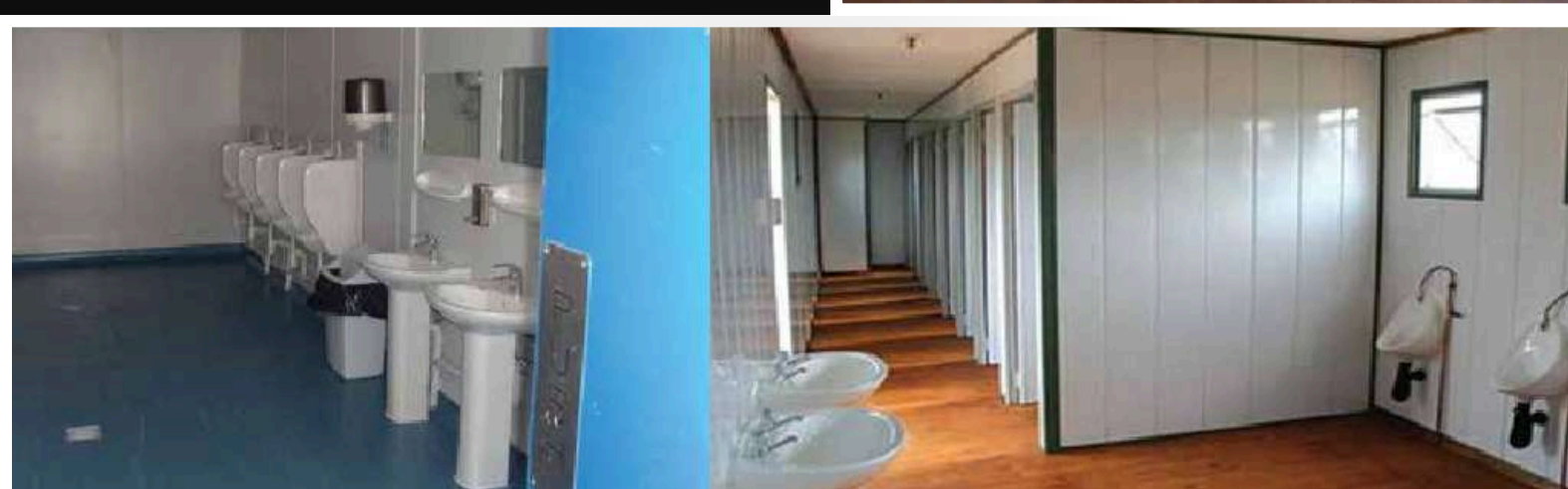


PRODUCTS

ACCOMODATION

Bait-al-Mushriq LLC supplied many projects with labor accomodation units starting from small units for 5-10 persons up to big compounds to fulfill hundreds of labor's need in labor camps which consist of 2 floors with complete service building contains food court and preparation area, and other services. Taking care of all details and special requirments with the perfect specifications and high quality, according to the local and international standards.

All products are available in different structures, models, and sizes to meet our valuable clients' comprehensive requirements. We have finished many prefabricated houses. Starting from single room without bath-room as watching room and kitchen to the multi rooms with dedicated designs and plan

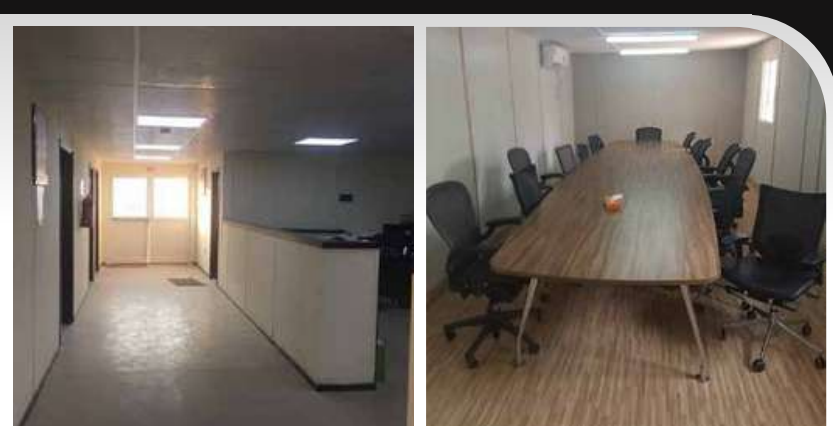


PRODUCTS

PREFAB OFFICE

Bait-al-Mashriq Prefabricated Buildings LLC proudly supports many contracting and constructing company, with on site offices which has top caliber and durability features. Most of our office cabins are sturdy, durable protected, safe, and apposite even to its handiest climatic and geographical problems.

With varity of models and plans single, double, open hole, and double storied offices. With high standards and top quality fire rated materials, we make it safe and comfortable place to work.



PRODUCTS

CONTAINERIZED STORES

For personal and commercial use Bait-al-Mashriq Prefabricated Buildings LLC stores come with durability protected, safe features to suit all needs and requirements. Dry or cold stores, prefabricated or customized containers, small big and customised size. We have build them professionally with very unique needs.



PRODUCTS

SMALL MODULE & UNIT

Our small module and unit at Bait-al-Mashriq Prefabricated Buildings LLC include:

- Watch Room
- Guard Booth
- Watchman Cabin
- Ticket booth
- Single Mobile Toilets

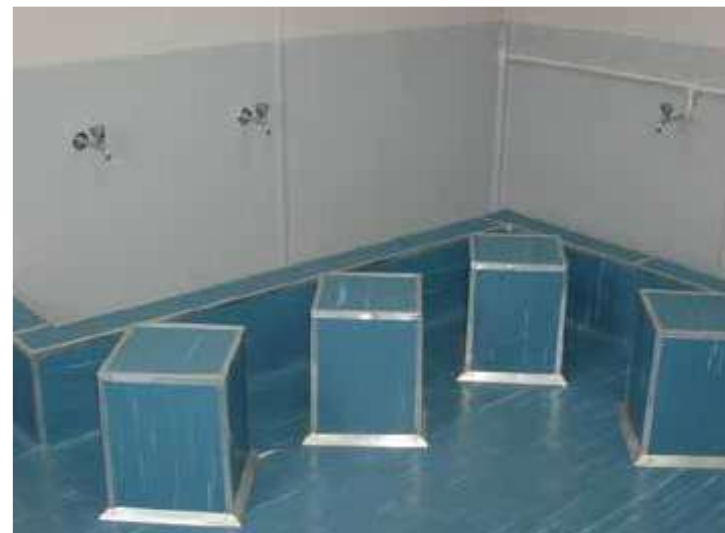
and others according to the changing uses of our customers, either personal or commercial or governmental uses.



PRODUCTS

MASJID “MOSQUES”

As some places need portable Masjid “Mosque” Bait-al-Mashriq Prefabricated Buildings LLC supplies different sizes and types of portable Masjid including ablution and toilets services. With durable and high quality specification all around the UAE.



PRODUCTS

PUBLIC BATHROOM

For public places Bait-al-Mashriq Prefabricated Buildings LLC manufactured many types of public bathrooms for commercial or governmental public parks and places. Bait-al-Mashriq Prefabricated Buildings LLC make the public bathrooms with safe, sustainable and high quality materials according to the best local and international standards.

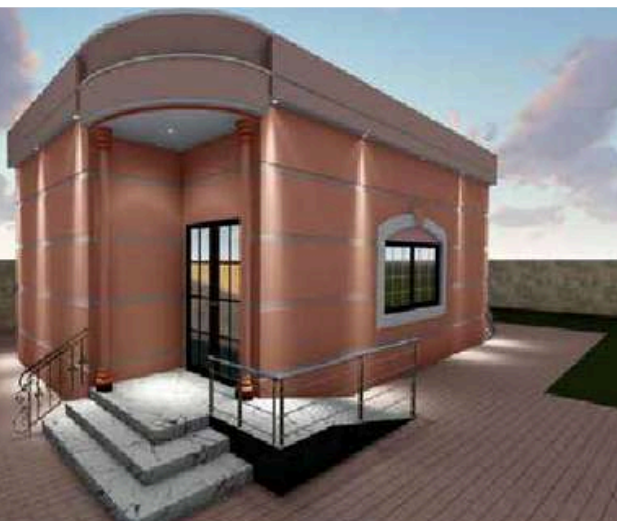


PRODUCTS

VILLA MAJLIS ANNEX

Bait-al-Mashriq Prefabricated Buildings LLC prefabricated Majlis and Villas Modular, we are your destination for brand new Prefab Villa Majlis in UAE, with high quality and great durability villa cabin at Bait-al-Mashriq Prefabricated Buildings LLC we design a brand new villa annex and Majlis with modern styles in UAE.

All materials have great durability with best suitable and sustainable materials. Dand Majlis are complete produced in quite beautiful and high-quality. Our Majlis or villa annex are eye catching and sustainable space you'll like to spend time in and perform prayers.



PRODUCTS

CONTAINERIZED CAFETERIA

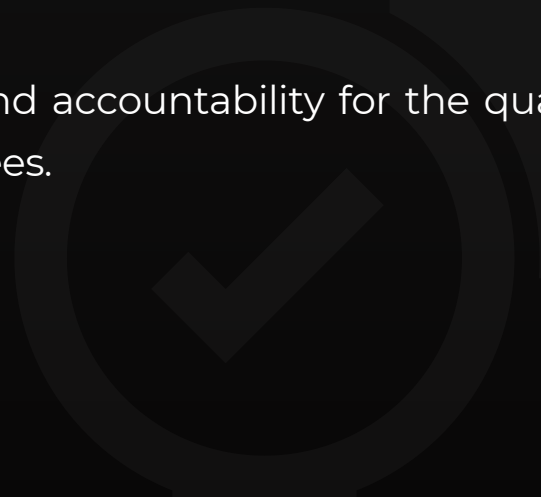
Containerized Cafeteria or Restaurant from Bait-al-Mashriq Prefabricated Buildings LLC using recycled shipping containers is becoming a popular alternative to conventionally built structures. Containers make the perfect instant home for small scale independent businesses. And no more so than in this 14 seater restaurant. A 20-foot container pop-up cafe, an intimate restaurant, or a container multiplex hangout destination. Our containerized restaurants have got it covered when it comes to variety. Container concepts create eco-friendly, turn crucial, and customized container restaurants, event & retail spaces. You can make what you want utilizing modified, recycled shipping containers because of our team with you in the UAE.



OUR POLICIES

QUALITY

- To develop a quality management system, this is based on continuous improvement and the avoidance rather than detection of problems.
- To supply quality products by aiming to exceed the requirement of customer.
- To establish strong relationships with both customers and suppliers this will contribute to improving the quality of what is sold and purchased.
- To continually improve the quality management system based on employee involvement and the maintenance of the quality policy.
- To provide all employees with the training, resources and support needed to supply quality products to all customers.
- To set meaningful quality objectives and ensure they are reviewed at the annual management review.
- To properly communicate the quality policy and quality objectives to all employees.
- To give individual responsibilities and accountability for the quality management system to all employees.



OUR POLICIES

METHOD STATEMENT

- Estimator/ Quantity Surveyor make the list of quantity of material required as per approved shop drawing.
- Approved list of quantity forward to purchaser to procure the material in specified time as per work program.
- Site Supervisor takes the measurement from the site.
- Measurement forward to Project engineer to recheck the quantity and sizes as per approved shop drawing
- Approved measurement list forward to production department.
- Production dept issue 2 nos. job order for aluminum fabrication and double glazing glass.
- Factory formen check the quantity and quality of fabricated material on daily basis and report to production manager.
- Project Engineer issue the job order for site fitting of fabricated material.
- Transport in charge deliver the fabricated material at site as per job order instruction.
- Site Supervisor has given report of site to Project Engineer on daily basis

SAFETY

- The safety of our employees and the public is paramount to the company. In fact, our goal is to operate an incident and injury free environment on all projects. To this end, we have developed a Corporate Safety Program with an integrated approach to safety management, combining active employee participation along with management support and oversight, in addition to creating a company-wide culture of sustainable safety awareness.
- Bait-al-Mashriq Prefabricated Buildings LLC proactive approach to eliminating danger, in addition to the management of risks, involves a myriad of strategies. They include: identifying and controlling work site hazards, the implementation of safety training, pretask planning, tool-box meetings, the availability of proper personal protection equipment, job site safety induction for employees and subcontractors, and encouraging employees to take responsibility and be held accountable for their own safety and that of their co-workers.
- While Bait-al-Mashriq Prefabricated Buildings LLC proud of the demonstrated success our safety initiatives have brought us to date, we are committed to the continued development and refining of our Corporate Safety Program as new challenges and technologies emerge in the future.

PORTFOLIO



PORTFOLIO



OUR CLIENTS



We thank our customers for their constant support and for the confidence that they have placed in us. We would like to assure you that we do not take this confidence for granted. Bait-al-Mashriq Prefabricated Buildings LLC prefab, we work as one team with a common purpose to provide best in class service to our customers. Our philosophy has always centered on our belief that customers should be treated in a fair and balanced manner. As we continue to build a stronger partnership together, we fully recognize that the support and the continued trust that our customer place in us is the foundation of our success. Below are some of the clients that we had the privilege to work with.



بيت المشرق

Prefabricated — Buildings —

Contact Us



0523618430 0567811395



salesbaitulmashriqprefab@gmail.com



Near Gas Plant, Al Sajja Industrial Area
Sharjah, United Arab Emirates