



الغادي لتجاره مضخات المياه ولوازمها ذ.م.م

**AL GHADI PUMPS AND PIPES TRADING LLC**

SPECIALIST IN SUPPLY OF HYDRAULIC PUMPING SYSTEMS AND ACCESSORIES



AL GHADI is led by young technocrats with its highly motivated team of professionals today is a forced to reckon with the field of hydraulics.

Our company policy is the satisfaction and growth through customer service.

We are specialized in the following jobs:

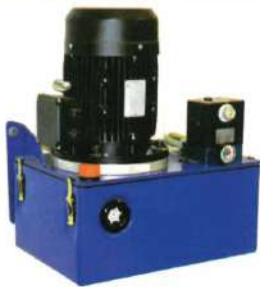
**PILE TESTING JACK**

**MANUFACTURE OF BI-DIRECTIONAL JACK – 100 TONS TO 1200 TONS**



Manufacture of bi-directional jacks – 100 tons to 1200 tons – working pressure – 700 bar  
We are into jack supply last 7 years – already supplied more than 1000 jacks to our various clients

High pressure pump  
unit Capacity  
200 bar to 1000 bar



Manufacture of  
custom build  
hydraulic jacks



Manufacture of hydraulic  
flushing power packs  
– diesel engine driven.



AL GHADI enjoys high level of confidence for its customer's Continuous quest for innovation & for taking of Challenges as resulted in our strong design & development capabilities.

AL GHADI is more than delighted to welcome all customers enquireis. Our Entire team of dedicated professionals are standing by to render assistance. Customers from the Middle East & Asia all over are cretain to get the best service.

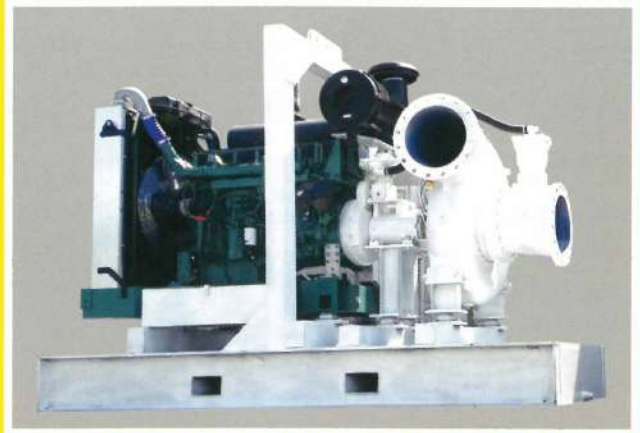
[www.alghaditr.com](http://www.alghaditr.com)

# PUMP SKID FABRICATION & RENTALS

AL GHADI'S Core business focuses on the supply of Centrifugal pump system and UHP skid unit Packages. Our entrie product range in pumping focuses on pumping equipment and UHP catering to the Oil and Gas, Petrochemical, Constructions and contractors.



Pump : ACP-250-D                      Head : 120 Mtr  
Engine: 16-V-92 Detroit              Suction / Discharge  
Flow : 1200 Mtr. Cube/Hr              - 10" / 12"



Pump : NHTH-RP-CORNELL              Head : 80 Mtr  
Engine: TAD 1643-VE-Volvo Penta      Suction / Discharge  
Flow : 1800 Mtr. Cube/Hr              - 10" / 12"



Pump : Lubi-end Suction                      Head : 70 Mtr  
Engine: TAD 943-VE-Volvo Penta      Suction / Discharge  
Flow : 1180 Mtr. Cube/Hr              - 10" / 12"



Pump : Mattar & Platt-Split Case              Head : 120 Mtr  
Engine: 1643-VE-Volvo Penta              Suction / Discharge  
Flow : 1200 Mtr. Cube/Hr              - 10" / 12"



Pump : Dewatering                              Head : 40 Mtr  
Engine: Kirloskar / Dutz                      Suction / Discharge  
Flow : 350 Mtr. Cube/Hr                      - 6" / 5"



Pump : Pressure Jet                              Pressure : 10,000 PSI  
Engine: Ashok Lyland                              Discharge  
Flow : 33 LPM                                      - 3/4" BSP

# LEADERS IN HYDRAULIC ENGINEERING

In Hydraulic alghadi is mainly involved in hydraulic engineering and special purpose design jobs. We are specialist in design and manufacturing of the powerpack, hydraulic equipments, test rigs, filtration systems and flushing rigs both engine and electrical driven.



Unit : Hydraulic Flushing Rig    Pressure : 70 Bar  
Engine: Perkins                      Discharge  
Flow : 1000 LPM                      - 3" / 2" NPT



Unit : Hydraulic Flushing Rig    Pressure : 70 Bar  
Motor: Weg                              Discharge  
Flow : 2000 LPM                      - 4" / 3" NPT



Unit : Skidding Power Pack        Pressure : 250 Bar  
Motor: Weg                              Discharge  
Flow : 200 LPM                        - 2" / 1" NPT



Unit : Test Powe Pack                Pressure : 350 Bar  
Motor: Weg                              Discharge  
Flow : 100 LPM                        - 1" NPT



Hydraulic power unit                Hydraulic manifold

Design and manufacture of hydraulic components.



Marine services – trouble shooting-hydraulic piping-  
Hydraulic flushing and hydraulic services.

Our Facility includes - hydraulic services, Hydraulic flushing jobs, hydraulic tubing and trouble shoot hydraulic systems.

AL GHADI is also the Hydraulic Service Provider in the marine, oil Field, Construction, Agriculture and Industrial Sector

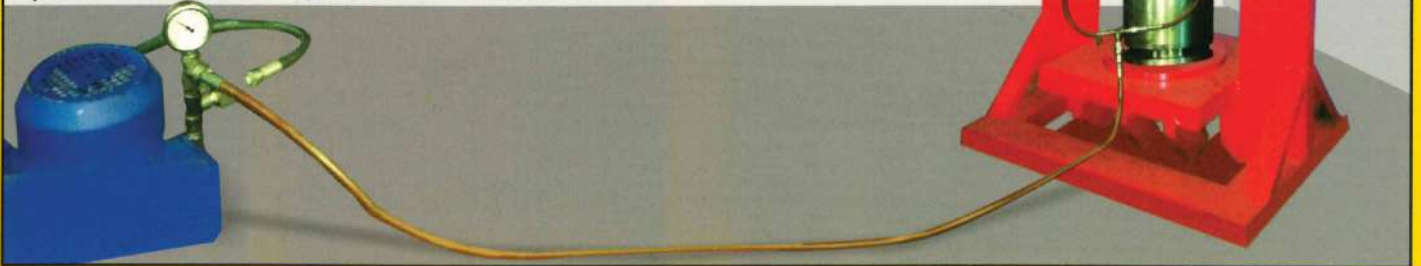
# HYDRAULIC JACK MANUFACTURING

## HYDRAULIC TEST BED

The Test facility for the low height heavy duty cylinders up to 1200 tons. Applications - pile testing jacks, Industrial pulling and pushing jacks.

Test Procedure - Middle of the test frame the jack will be placed as shown in the test bench, above this jack have the facility for placing the load cells, the cylinder will be pressurized with power pack up to 700-800 bar gradually.

Every 100 bar intervals the load will be calibrated , pressure drop and performance of the jack will be checked.



## MANUFACTURE OF CUSTOM BUILD HYDRAULIC CYLINDERS

The facilities in this division include an excellent infrastructure with fully equipped work shop and hydraulic test bench of 1200 tons capacity, which is said to be One of its kind in the region. Jack manufactured in Various applications-Marine, Skidding cylinder for rig, bi-directional jack and custom builds as per requirements.

**AL GHADI Manufactures the Largest selection of cylinders - Lifting and Pushing Applications.**



## AL GHADI PUMPS AND PIPES TRADING LLC

P.O Box:65172 , Sharjah, United Arab Emirates  
Tel.: [+971] 6 5348498, Fax: [+971] 6 5348278  
Mob.: (+971) 52 6333136, E-mail: [Info@alghaditr.com](mailto:Info@alghaditr.com)

[www.alghaditr.com](http://www.alghaditr.com)