

NO.34 JUXIAN Road, Anping Development Area,  
Quanzhou City, Fujian Province, China.

USA/Thailand/Germany/UAE/India/Malaysia

Email: [info@xingyimachine.com](mailto:info@xingyimachine.com)

Whatsapp: +86-15960788816 / +86-15960731060  
/+86-15880886819

**INGYI**  
Fujian Xingyi Intelligent Equipment Co, Ltd.

[www.xingyimachine.com](http://www.xingyimachine.com)  
[www.high-tech-grinding.com](http://www.high-tech-grinding.com)  
[www.conglory.com](http://www.conglory.com)



CE SGS SA EAC

August 2024 edit-1.0  
Reserve the right to change the parameters without prior notice.



# EQUIPMENT CATALOGUE

Grinding, Polishing & Surface preparation

- Planetary grinding machine
- Square rotary grinding machine
- Shot blasting machine
- Scarifier / Shaver
- Dust collector
- Power trowel polishing system

**INGYI**

# FUJIAN XINGYI INTELLIGENT EQUIPMENT CO., LTD.

XINGYI started as a stone restoration company in 1999 and became one of the leading machine manufacturer in the industry. XINGYI manufactures high-quality floor grinders, industrial dust collectors, surface preparation equipment, and accessories, and provides services worldwide.

XINGYI focuses on research and development of high-technology innovations. In 2014, the FIRST self-propelled planetary grinding machine in China was born in XINGYI. In 2015, XINGYI developed its FIRST remote-control grinding machine that enhances productivity with smart control features. For the past 10 years, XINGYI distributed more than 50,000 units of grinders and dust collectors to over 130 countries and areas.

Our professionals expands their knowledge and development from polishing to surface preparation. In 2021, XINGYI developed the FIRST set of portable shot blasting machines with a DIGISTEER system in the world. Its Scarifying, Shaving, and Heavy-duty Grinding technologies for high-quality surface preparation are warmly welcomed in the market.

With the commitment to providing better service and support to its clients, XINGYI sets up sales & service center around the world and collaborates with local distributors and dealers. Contact us today for more information about our technologies, consumables, prices, support, and collaboration.



## RESEARCH & DEVELOPMENT

Our R&D department commits the continuous improvements of XINGYI's technologies. The core principle of our research is to enhance the development of ergonomic, durability, and environmentally friendly equipment.

## SERVICES & SALES

Our team of international experts from all over the world is happy to answer your questions and provide you with all the information you need. They are ready to assist with the best solution for your project in terms of cost, time, and productivity.



## PRODUCTION

XINGYI is located in Jinjiang City, Fujian Province, China with a manufacturing plant of 10,000 square meters. We are ISO9001 and SGS certified and all the equipment meets the CE requirements. The main components of all the equipment are produced in this factory including precision machining and assembly of gearboxes, cutting and welding of various types of machine body, painting, and assembly. All machines are assembled and tested in one factory for quality control and assurance.

## LOGISTICS AND AFTER-SALES

With the operation and service centers in USA, Canada, Mexico, Germany, Hungary, UAE, India, Thailand, Malaysia, and Indonesia, and a large network of distributors and dealers in North America, Europe, Middle East, South-Eastern Asia, we are ready to assist you, anywhere and anytime. Thanks to our great Logistics team, XINGYI is able to deliver machines and consumables worldwide with the most cost effective and timely solution.

# FLOOR GRINDERS



The GX series is an upgraded version of the classic QX series with more than 10,000 clients in the last decade. There are three shapes of the gearbox: square double-head and 4-head counter-rotation grinding, and 3-disc planetary grinding. They are all built with solid steel. The machines are simple, durable, reliable and easy to operate.



## PRODUCT APPLICATIONS



**SIMPLE, ROBUST & PRACTICAL**



	GX-500		GX-580		GX-650		GX-688		GX-720		GX-550		GX-750		GX-700		GX-820		GX-858		
Working Width	498mm		570mm		638mm		638mm		690mm		510mm		758mm		640mm		815mm		815mm		
Motor Power	5.5kW		5.5kW		9.5kW		11kW   15kW		15kW		4kW   5.5kW		11kW		11kW		15kW		15kW		
Voltage	380-480V 3P	200-240V 3P   200-240V 1P	380-480V 3P	200-240V 3P   200-240V 1P	380-480V 3P	200-240V 3P	380V 3P or 200-240V 3P		380-480V 3P	200-240V 3P	380-480V 3P or 200-240V 3P or 200-240V 1P	380-480V 3P	200-240V 3P	380-480V 3P	200-240V 3P	380-480V 3P	200-240V 3P	380-480V 3P	200-240V 3P	380-480V 3P	200-240V 3P
Frequency	50/60hz		50/60hz		50/60hz		50/60hz		50/60hz		50/60hz		50/60hz		50/60hz		50/60hz		50/60hz		
Rotating Speed	350-1680rpm	350-1500rpm	350-1680rpm	350-1500rpm	350-1680rpm		350-1500rpm   350-1680rpm		350-1680rpm		350-1950rpm   350-1500rpm	350-1950rpm	350-1500rpm	350-1680rpm		350-1950rpm	350-1500rpm	350-1950rpm		350-1950rpm	
Grinding disc	270mm <sup>4</sup>		310mm <sup>2</sup>		348mm <sup>4</sup>		348mm <sup>4</sup>		380mm <sup>4</sup>		230mm <sup>3</sup>		256mm <sup>3</sup>		360mm <sup>4</sup>		278mm <sup>4</sup>		278mm <sup>4</sup>		
Mode of operation	Walk-behind		Walk-behind		Walk-behind		GX688 Walk-behind / GX688-A Self-propelled		GX-718 Walk-behind / GX-720 Self-propelled		Walk-behind		Walk-behind		Walk-behind		Walk-behind		Remote / Walk-behind		
Water Tank	25L		25L		30L		30L		30L		25L		30L		30L		30L		30L		
Weight	237kg		218kg	228kg	317kg		399kg	410kg	416kg	456kg	221kg	230kg	348kg		377kg		565.5kg		595.5kg		
Appearance size	1667×500×1066mm		1544×580×1082mm		1980×650×1135mm		2031×650×1187mm		2177×690×1185mm		1651×520×1087mm		2126×760×1160mm		1700×650×1770mm		2171×825×1904mm		2171×825×1904mm		

## PLANETARY GRINDERS

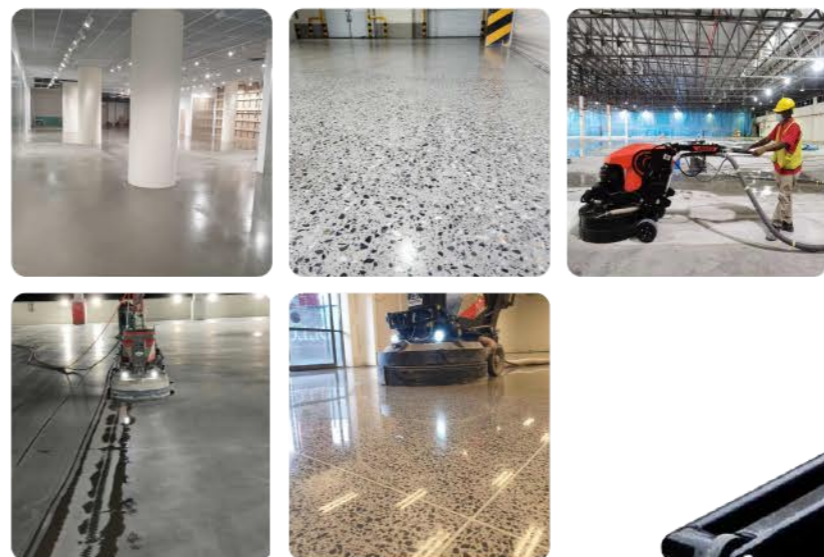


The REMOTE CONTROL system is developed by XINGYI, with independent intellectual property rights. It has a variety of ergonomic and practical control technologies, which are stable, reliable, fast in response, and easy to operate.

The keys on the control panel control the driving speed, forward and backward of the machine. Motor, wheels and lights are controlled from the centralized panel allows the operator to work ergonomically. Consistent grinding speed generates smoother and more uniform results.



## PRODUCT APPLICATIONS



	955LE	850LE	800LE plus
Working Width	955mm	815mm	793mm
Motor Power	22kW	15kW	15kW
Voltage	380-480V 3P   200-240V 3P	380-480V 3P   200-240V 3P	380-480V 3P   200-240V 3P
Frequency	50/60hz	50/60hz	50/60hz
Rotating Speed	350-1950rpm	350-1950rpm	350-1950rpm
Grinding disc	370mm*4	278mm*4	256mm*4
Mode of operation	Remote/Self-propelled/Walk-behind	Remote	Self-propelled / Manual
Water Tank	20L	39L	39L
Weight	750kg	613kg	570kg
Appearance size	2402×979×1165mm	2266×825×1107mm	2270×805×1138mm

## TOPOTENT 955LE

The LE Series machines are XINGYI's classic medium to large 4-disc planetary machines with a sheet metal body in self-propelled or remote control mode.



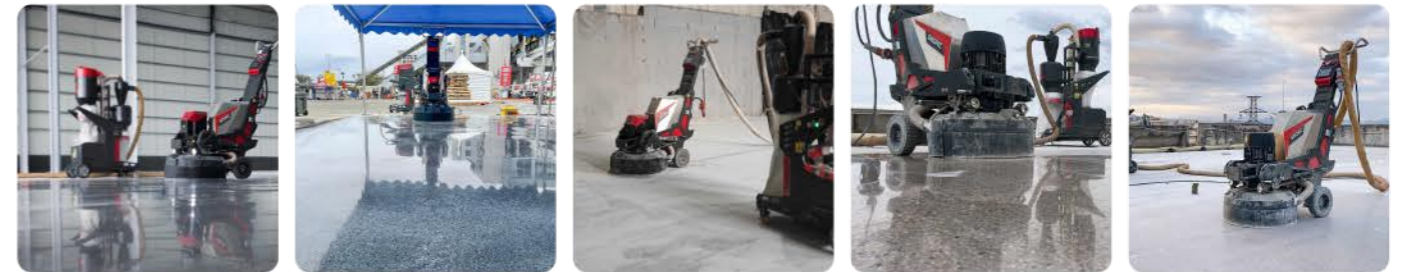
# PLANETARY GRINDERS



The HTG series is a successful and proud innovation of XINGYI in 2014. Its unique design includes a high quality metal body and a recognizable stainless steel water tank. It is designed with an elegant outlook in different sizes from small, medium to large. As the top quality product of XINGYI, all gearboxes are manufactured with the most advanced technology. High performance dust collectors and tools are available to pair with the HTG series.



## PRODUCT APPLICATIONS



## PRODUCTIVITY FAMILY EXCEED YOUR EXPECTATION



	HTG-820RC	HTG-680RC	HTG-680SP	HTG-550plus	HTG-460
Working Width	815mm	678mm	678mm	550mm	440mm
Motor Power	18.5kW	11kW	11kW	5.5kW	2.3kW   1.1kW
Voltage	380-480V 3P   200-240V 3P	380-480V 3P   200-240V 3P	380-480V 3P   200-240V 3P	380-480V 3P   200-240V 3P   200-240V 1P	200-240V 1P   110V 1P
Frequency	50/60hz	50/60hz	50/60hz	50/60hz	50/60hz
Rotating Speed	350-1950rpm	350-1950rpm	350-1950rpm	3P 350-1950rpm   1P 350-1500rpm	350-1500rpm   350-1500rpm
Grinding disc	278mm*4	230mm*4	230mm*4	230mm*3	200mm*3
Mode of operation	Remote/ Walk-behind	Remote/ Walk-behind	Self-propelled	Walk-behind	Walk-behind
Water Tank	25L	20L	20L	20L	15L
Weight	620kg	548kg	528.5kg	289kg	194kg   191.5kg
Appearance size	2305×833×1165mm	2062×708×1122mm	2042×700×1137mm	1581×524×1164mm	1539×462×927mm
	3 planetary discs available Working Width 780mm(278*3)	3 planetary discs available Working Width 660mm(230*3)			



# PLANETARY GRINDERS



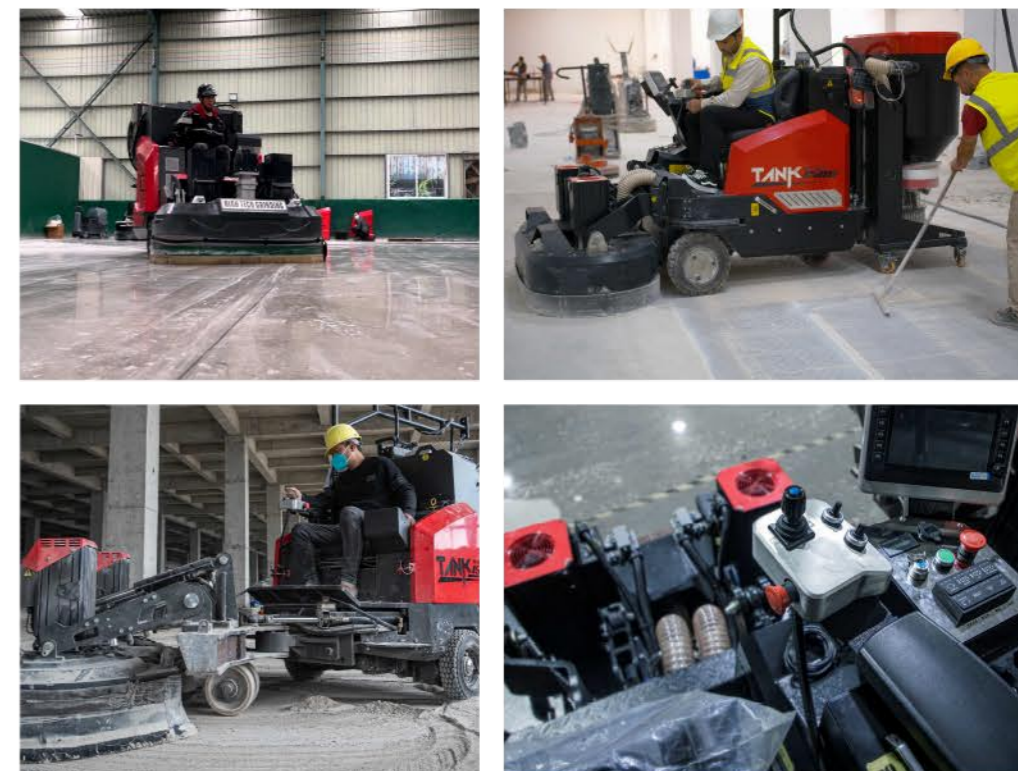
TANK injects new vitality into digital grinding. Every time you operate, every time you grind, every time you touch, you will experience the future star product of XINGYI. XINGYI creates unique grinding pleasure.

## PRODUCT APPLICATIONS



## RIDE-ON REMOTE GRINDER TANK AND NEW ENERGY SERIES

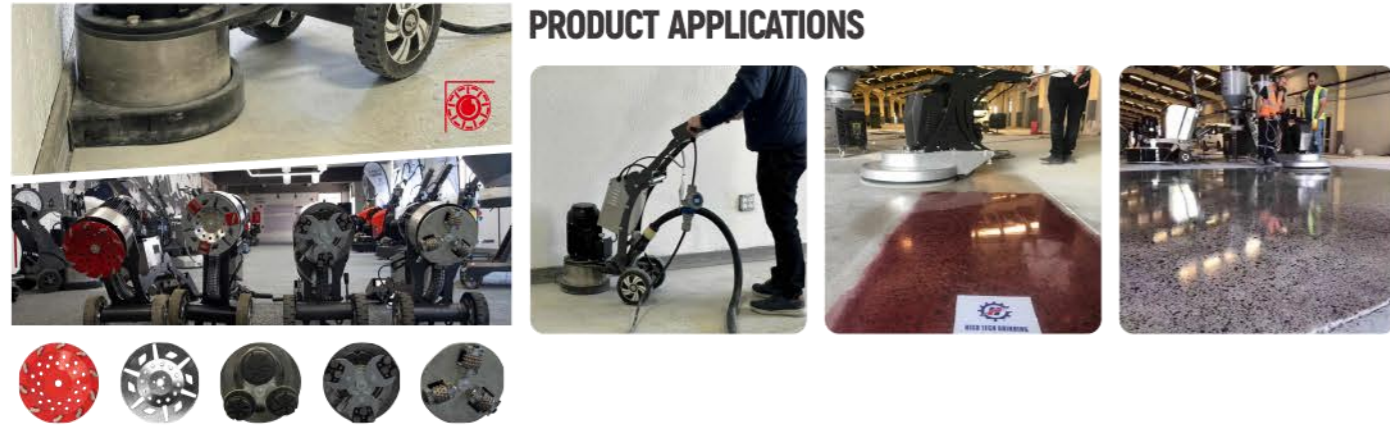
	TANK-2500	TANK-1680GBD	TANK-1500	TANK-1588
Working Width	2400mm	1688mm	1550mm	1502mm(45°)
Motor Power	18.5kW*3 / 75HP	22.4kW*2 / 60HP	22kW*2 / 59HP	18.5kW*2 / 50HP
Voltage	600V	380-480V 3P	380-480V 3P	380-480V 3P
Frequency		50/60hz	50/60hz	50/60hz
Rotating Speed	450-1950rpm	450-1950rpm	450-1950rpm	450-1950rpm
Grinding disc	278mm*12	315mm*8 (24Pads & 48Pads)	278mm*8 (24Pads & 48Pads)	315mm*8 (24Pads & 48Pads)
Mode of operation		Remote/Semi-auto pilot	Remote/Semi-auto pilot	Remote/Semi-auto pilot
Water Tank	180L	20L	20L	20L
Weight	6000kg	3050kg	2839kg	2235kg
Appearance size	5745×2410×2506mm	3073×1628×2396mm	3453×1590×2239mm(Dust collector included)	3050×2140×1600mm
Motor	25KW/33.5HP	7.5KW*2/20HP	7.5 kW / 10 hp	
CFM	1647	1176	588	
Vacuum	40 kPs	40 kPa	35 kPa	
HEPA H13 filter	3.86 m³ > 99.99% @ 0.3um	3.86 m³ > 99.99% @ 0.3um	3.86 m³ > 99.99% @ 0.3um	
Filter cleaning	Automatic jet-pulse	Automatic jet-pulse	Automatic jet-pulse	
Dust collection	Continuous drop-down bag	Continuous drop-down bag	Continuous drop-down bag	
Air flow	2800 m³/h	2000 m³/h	1000 m³/h	
Optional	wet vacuum	wet vacuum	wet vacuum	



## SUPPLEMENTARY PRODUCTS / DUST COLLECTOR

The supplementary products include edge grinder and the high speed polishing machine needed for the whole grinding and polishing process.

### PRODUCT APPLICATIONS



	HTG-250VS	HTG-250D	HTG-27S	HTG-DIP-HD027 Burnishing Pads
Working Width	250mm	250mm	690mm	Grit 400# 800# 1500# 3000#
Motor Power	3kw	2.2kw	7.5kw	Specification 2'
Voltage	380-480V 3P   200-240V 1P/3P	200-240V 1P/3P	380-480V 3P   200-240V 3P	
Frequency	50/60hz	50hz   60hz	50/60hz	
Rotating Speed	350-1500rpm	1500rpm	350-1500rpm	
Grinding disc	250mm*1	250mm*1	690mm*1	
Water Tank	/	10L	/	
Weight	60kg	60kg	179kg	
Appearance size	1200×465×933mm	1200×465×933mm		

## HIGH-TECH-GRINDING DUST COLLECTOR CLEANING AND DUSTLESS OPERATION

The right diamond tools on a right equipment generate better finishing. Various metal segments are designed for wet or dry applications. It is designed for aggressive grinding and exceptional durability. Resin pads are designed to achieve the best performance on original concrete and terrazzo floor.

### PRODUCT APPLICATIONS



	IVC-F65L	IVC-33L	IVC-V1A	IVC-V2	IVC-V3	IVC-45L	CD-553B	cyclone pre-separator
Motor Power	2.2 kW	3.3 kW	1.8 kW	2*1.2 kW	3.3 kW	5.5 kW	7.5 kW	
Voltage	220V 1P	220V 1P   110V 1P	DC24	220V 1P	220V 1P   110V 1P	380V 3P   220V 3P	380V 3P   220V 3P	
Weight	68kg	105kg	105kg	80kg	92kg	223.5kg	249kg	60kg
Vacuum	22 kPa	22 kPa	16 kPa	22 kPa	22 kPa	30 kPa	40 kPa	
Vacuum Port								Φ80mm
Maximum flow	385m <sup>3</sup> /h	537m <sup>3</sup> /h	420m <sup>3</sup> /h	410m <sup>3</sup> /h	537m <sup>3</sup> /h	600m <sup>3</sup> /h	1100m <sup>3</sup> /h	
Filtration level	1.5m <sup>2</sup> HEPA H13	1.5m <sup>2</sup> HEPA H13		1.5m <sup>2</sup> HEPA H13	2.8m <sup>2</sup> +2m <sup>2</sup> HEPA 13	cyclone+2.8m <sup>2</sup> HEPA H13	3.36m <sup>2</sup> HEPA 13	
Filter cleaning	Shaking back and forth	Shaking back and forth	Jet pulse by manual	Jet pulse by manual	Jet pulse by manual	Jet pulse by manual	Automatic jet-pulse	
Hose	50mm	50mm			50/63/80mm	50/63/80mm	50/63/80mm	
Collection	Barrel	continuous drop-down bag		continuous drop-down bag	continuous drop-down bag	continuous drop-down bag	continuous drop-down bag	
Appearance size	760×565×983mm	790×711×1510mm	610×670×1325mm	800×530×1470mm	950×490×1143mm	1250×711×1930mm	1285×629×1490mm	450×566×1654mm

# PROPANE MACHINE



The HTG propane machine is available in BRIGGS & STRATTON, KOHLER and ONYX engines. Some other brands need to be sourced locally for after sales support.

## PRODUCT APPLICATIONS

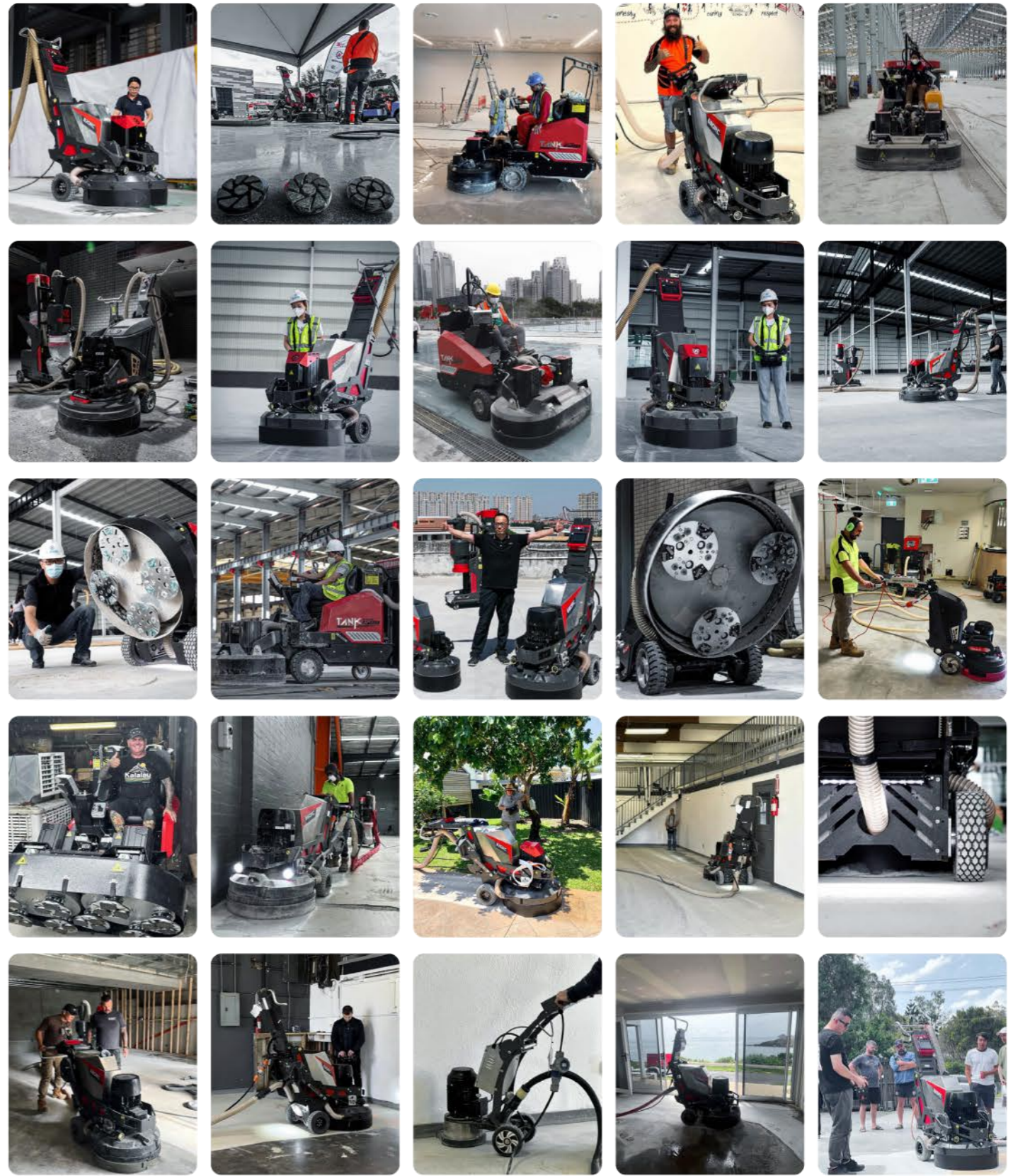


**HTG-800-3P**

**HTG-680-3P**

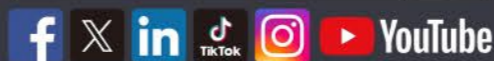
**IVC-553P**

Working Width	800mm	660mm	Motor Power	10hp
Power	Vapor Propane	Vapor Propane	Power	Vapor Propane
Engine	31hp	27hp	Vacuum	40 kPa
Variable Speed	2500rpm	2500rpm	Maximum flow	600m <sup>3</sup> /h
Grinding disc	278mm <sup>3</sup>	230mm <sup>3</sup>	Weight	175.5kg
Grinding Pressure	306.5-216kg	264-182.5kg   284-204kg	Appearance size	1354.5×607.9×1608.5mm
Mode of operation	Walk-behind	Walk-behind   Self-propelled		
Weight	552kg	443kg   536kg		
Appearance size	2345×825×1237mm	2136×701×1240mm		



FOLLOW US

Xingyi Machine Global



**YOUR ONE STOP FLOORING SOLUTION**

www.xingyimachine.com



## SURFACE PREPARATION EQUIPMENT

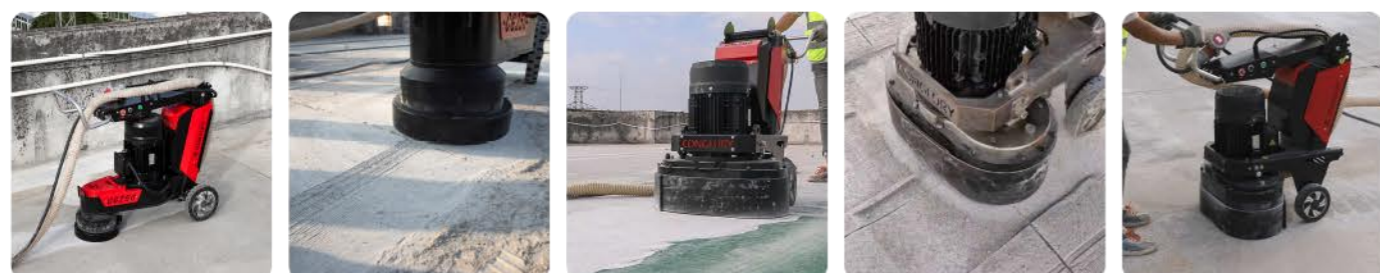


**CONGLORY**

## CONGLORY SINGLE HEAD / TWIN HEADS HEAVY-DUTY GRINDERS TO LEVEL UNEVEN FLOORS AND REMOVE THICK COATINGS

CONGLORY's single and twin-headed floor grinder has an user friendly design with adjustable speed, is an ideal equipment for waterproofing, coating, decorative flooring, decontamination and demolition. It is ideal for leveling uneven floor and removing old paints / coatings / glues.

### PRODUCT APPLICATIONS



	<b>CG-580</b>	<b>CG-250</b>
Working Width	570mm	250mm
Motor Power	5.5kw	5.5kw
Voltage	380-480V 3P   200-240V 1P/3P	380-480V 3P   200-240V 1P/3P
Frequency	50/60hz	50/60hz
Rotating Speed	350-1500rpm	350-2000rpm
Grinding disc	310mm <sup>2</sup>	250mm <sup>1</sup>
Weight	201kg	183kg
Appearance size	1487×572×944mm	1716×435×1225mm

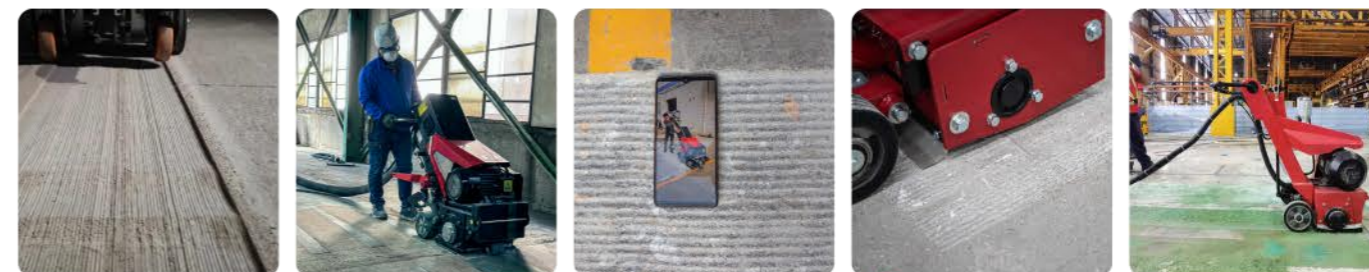
### OPTIONAL ABRASIVES



## CONGLORY SCARIFIER AND SHAVER TO LEVEL LARGE SURFACES OR REMOVE THICK COATINGS

CONGLORY's scarifier removes difficult coatings such as glue, rubber, thermal plastic and other coatings on concrete and asphalt surface. With a shaving function on the same machine, it removes almost everything.

### PRODUCT APPLICATIONS



	<b>CS-320E</b>	<b>CS-250E</b>	<b>CS-200E</b>
Motor Power	15 kW / 20 hp	7.5 kW / 10 hp	15 kW   22 kW   1.1 kW
Voltage	380V/220V 3P	380V/220V 3P	220V 1P   110V 1P
Weight	315kg + 110kg weighted iron *	170kg	60kg
Working depth	6-10mm	3-5mm	1-3mm
Working Width	320mm	250mm	200mm
Operate	0-23m/min self-propelled	Walk behind / with disc break	Walk behind / with disc break

\* (excluding hub and cutter)

### CS320E ACCESSORIES



### CS250E ACCESSORIES



### CS200E ACCESSORIES





CONGLORY

## CONGLORY SHOT BLASTER TO CLEAN AND RETEXTURE CONCRETE OR ASPHALT, STEEL

CONGLORY closed-circuit shot blaster is an environmental-friendly process for different applications such as:

- To clean and prepare steel, concrete and asphalt surfaces
- To remove top layers such as paint and epoxy
- To remove markings & rubber on roads, runways, industrial floors and more
- To improve skid resistance on roads and runways
- To generate aesthetics effects for roads, highways and runways

### PRODUCT APPLICATIONS



### SHOT BLASTER DUST COLLECTOR



	CB1-10E	CD-556B	CB2-20E	CD-756B	CB1-10E7	CD-553B
Motor Power	11 kW	4 kW	11 kW*2	7.5 kW	7.5 kW	7.5 kW
Voltage	380V 3P   220V 3P	380V 3P	380V 3P   220V 3P	380V 3P	380V 3P   220V 3P	380V 3P   220V 3P
Weight	395kg	647kg	570kg	647kg	249kg	249kg
Working Width	250mm		550mm		250mm	
Production rate	> 150 m <sup>2</sup> / h		> 300 m <sup>2</sup> / h		> 50 m <sup>2</sup> / h	
Operate	DIGI-steer systems with integrated drive 0-23m/min self-driver		DIGI-steer systems with integrated drive 0-20m/min self-driver		0-20m/min self-driver	
Vacuum		250mm		250mm		40 kPa
Maximum flow		1100m <sup>3</sup> / h		1600m <sup>3</sup> / h		1100m <sup>3</sup> / h
Filter cleaning		Automatic jet-pulse		Automatic jet-pulse		Automatic jet-pulse
Hose		150 mm		150 mm		80 mm
Collection		continuous drop-down bag		continuous drop-down bag		continuous drop-down bag
Appearance size	1985×490×1200mm	1550×943×1710mm	2209×823×1199mm	1550×943×1710mm	1800×430×1130mm	1285×629×1490mm

### MACHINE ADVANTAGES



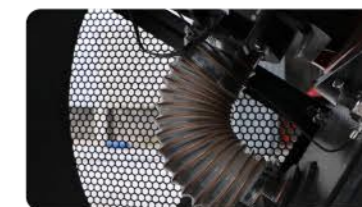
DIGI-Steer technology



Battery power for transportation

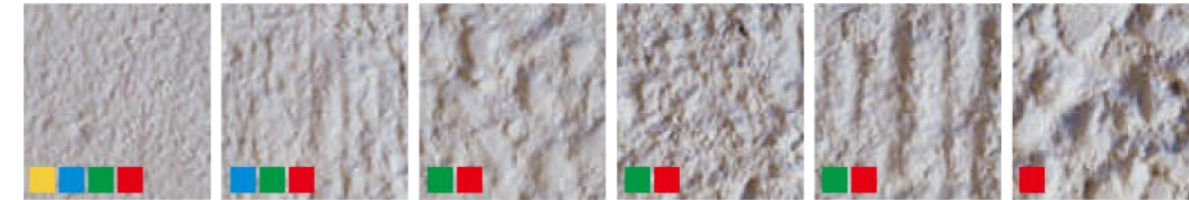
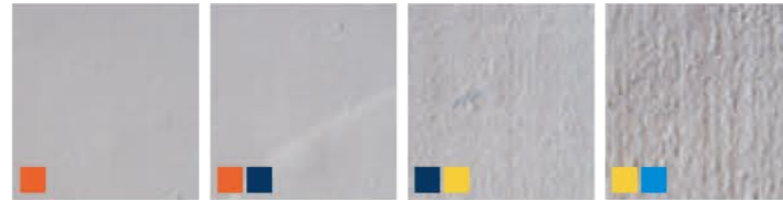


Abrasive flow controlled by Digisteer



Digital steel shot flow control Applicable to a variety of steel shot models (S330-S550)

These Concrete Surface Profiles were developed by the International Concrete Repair Institute (ICRI), are divided into ten classifications (CSP 1-10) of surface textures based on the average distance from the peaks of the surface to the valleys. They are accepted industry standards to help guide the installer achieve the proper texture for successful bonding of the overlay or coating. The lower number profiles are smoother (CSP 1 is nearly flat), and the higher numbers have more "tooth" and get progressively rougher.



Recommended surface preparation technique for different CSP

**CSP-1**

**CSP-2**

**CSP-3**

**CSP-4**

**CSP-5**

**CSP-6**

**CSP-7**

**CSP-8**

**CSP-9**

**CSP-10**

Sealers:  
0-3 mils / 0-0.075 mm

CSP1—CSP2



Thin Films:  
4-10 mils / 0.1-0.25 mm

CSP2—CSP3



High-Build Coatings:  
10-40 mils / 0.25-1 mm

CSP3—CSP5



Self-Leveling Toppings:  
50 mils-1/8 inch / 1.25-3.175 mm

CSP4—CSP6



Polymer Overlays:  
1/8 inch-1/4 inch / 3.175-6.35mm

CSP5—CSP9



Concrete Overlays & Repair Materials:  
1/4 inch+ / 6.35 mm+

CSP5—CSP10



# CONGLORY FAMILY

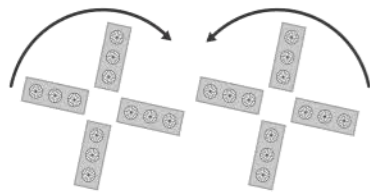


## CONGLORY POWER TROWEL LEVELLING AND SMOOTHING OF CONCRETE SURFACES

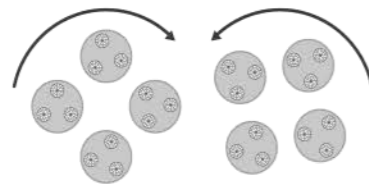
### SHEENCRETING SYSTEM

CONGLORY's patented trowel polishing system - Sheencreting, enables you to switch from a power trowel to a polishing machine in 10 minutes. The mounting pad with a preinstalled patented resin disc is suitable for direct mounting on a trowel blade or any other mounting plate in the market. Different polishing effect can be achieved by using the right tools.

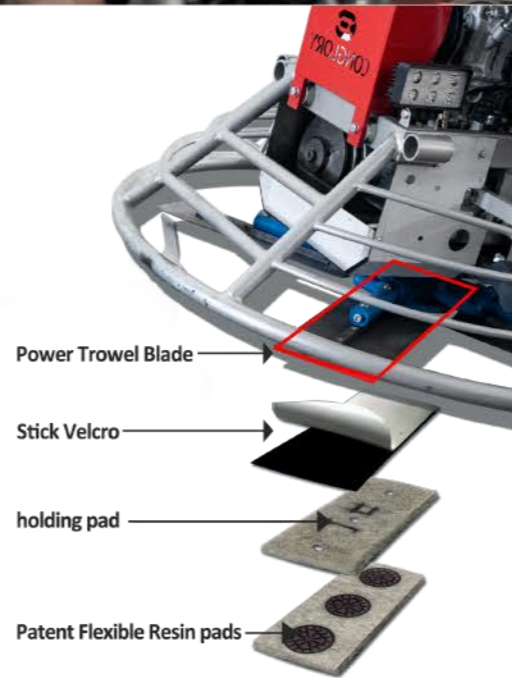
Installation mode I



Installation mode II



The Conglory CRP-1950 and CRP-1580 ride-on power trowel machine can be used for polishing with Sheencreting system kits, with high polishing productivity up to 300 to 500 square meters per hour.



	CRP-2390H	CRP-1970D	CRP-1950	CRP-1580	CRP-1620	CMT-980
<b>Power</b>	26kW / 35hp	18kW / 24hp	13kW / 17hp	7.8kW / 10hp	17kW / 23hp	4kW / 5hp
<b>Working Size</b>	2390mm/94in	1970mm/78in	1950mm/77in	1580mm/62in	1620mm/64in	980mm/39in
<b>Speed</b>	175rpm	175rpm	160rpm	165rpm	155rpm	150rpm
<b>Weight</b>	520kg	430kg	360kg	230kg	363kg	82kg
<b>Engine</b>	B&S 613477	Honda GX 690	Honda GX 690	B&S 420CC	B&S vanguard 23hp/ customized and propane engine	Honda GX 160
<b>Size, mm</b>	2500 × 1250 × 1530	2020 × 1120 × 1520	2000 × 1020 × 1335	1690 × 845 × 1020		1850 × 980 × 1000

## PRODUCT APPLICATIONS



	MODEL	DESCRIPTION	SIZE	THICKNESS, MM	MACHINE USE	PACKAGE SIZE, MM
<b>A</b>	XYTB-1580	finishing 65Mn	145 × 295 5 × 12"	2.0	CRP-1580	360 × 170 × 45
<b>B</b>	XYTB-20414	finishing 65Mn	150 × 355 6 × 14"	1.6	CMT-980 / CRP-1970D CRP-1950	360 × 170 × 45
<b>C</b>	XYTB-20479	finishing 65Mn	200 × 355 8 × 14"	1.6	CMT-980 / CRP-1970D CRP-1950	360 × 220 × 45
<b>D</b>	XYTB-20410	finishing 65Mn	150 × 460 6 × 18"	1.6	* CRP-2390H	360 × 170 × 45
<b>E</b>	XYTB-20480	comb 65Mn	200 × 460 8 × 18"	1.6	* CRP-2390H	470 × 220 × 45

\* The machine is 5-axis, equipped with 5 pieces/couple



	MODEL	DESCRIPTION	SIZE	THICKNESS, MM	MACHINE USE	PACKAGE SIZE, MM
<b>F</b>	XYTB-11691	Buckle 4pcs 65Mn	815mm/32in	3.0	CRP-1580	1100 × 1150 × 320 10 pcs
<b>G</b>	XYTB-11691	Buckle 8pcs 65Mn	940mm/37in	3.0	CMT-980 / CRP-1970D CRP-1950	960 × 960 × 1200 50 pcs
<b>H</b>	XYTB-11414	Buckle 8pcs 65Mn	1175mm/46in	3.0	CRP-2390H	1200 × 1200 × 1200 50 pcs
<b>I</b>	XYTB-3505	Buckle 5pcs 65Mn	1175mm/46in	3.0	CRP-2390H	1200 × 1200 × 1200 25 pcs

# CONCRETE PAVEMENT-LASER SCREED MACHINE



CTP-2955W



CTP-2955B



## LASER SCREED MACHINE

CTP-4070B



## PRODUCT APPLICATIONS



CTP-2525WD



CTP-2525W



LASER SCREED MACHINE	ENGINE	LASER SYSTEM (STANDARD)	SUSPENSION	SCREED HEAD WIDTH	TRAVEL DRIVE	WALKING SPEED	WEIGHT	APPEARANCE SIZE	DESCRIPTION
CTP-2525W	Honda GX 690	Japan Topcon H5A transmitter Swiss Leica MS720 receiver	stationary	2525mm/99in	Low-speed high-torque turbine reducer + hydraulic drive motor	0-3km/h	1100kg	3500×2850×1700mm	Upgrade: Loncin 28HP engine, which can be equipped with 2955mm working head, higher construction efficiency.
CTP-2525WD	Honda GX 690	Japan Topcon H5A transmitter Swiss Leica MS720 receiver	stationary	2525mm/99in	Low-speed high-torque turbine reducer + hydraulic drive motor	0-3km/h	950kg	3250×2850×1320mm	Intelligent steering wheel operation mode, flexible control, comfortable seat with backrest; Optional: Loncin 28HP engine, which can be equipped with 2955mm working head, which has higher construction efficiency.
CTP-2955W	35HP imported from the United States Briggs & Strats Engine	Japan Topcon H5A transmitter Swiss Leica MS720 receiver	stationary	2955mm/116in	Planetary reducer	0-3km/h	1200kg	3500×3300×1700mm	Planetary reducer drive, electronically controlled walking and steering are adopted, and the construction is more stable.
CTP-2955B	Yanmar 4TNV94L Upgradeable Yanmar 4TNV98C(58HP)	Japan Topcon SV2S display double-slope transmitter Japan Topcon LS-B200W receiver	Telescopic stroke 6 meters	2955mm/116in	Hydraulic four-wheel drive	0-3km/h	6500kg	7300×2300×2300mm	This model of machine is capable of 360° rotation and is equipped with a 3/6m telescopic boom and one-key outrigger leveling control; 18 square meters of concrete can be leveled each time, and the flexible and efficient hydraulic system can control the height of the scraper and the cloth spiral to maintain the flatness of the screed-coat;
CTP-4070B	Yanmar 4TNV98T	Japan Topcon SV2S display double-slope transmitter German Moba LS3000 receiver	Telescopic stroke 6 meters	4070mm/160in	Hydraulic four-wheel drive	0-6km/h	8500kg	8600×2350×2980mm	This model of machine is capable of 360° rotation and is equipped with a 4/6m telescopic boom and one-key outrigger leveling control; 24 square meters of concrete can be leveled each time, and the flexible and efficient hydraulic system can control the height of the scraper and the cloth spiral to maintain the flatness of the screed-coat;

## GAS-POWERED CONCRETE SAW



## GAS-POWERED CONCRETE SAW

### CQ-350P

**Lightweight and Portable:** The machine's lightweight body and retractable handles make it easy to transport, allowing for convenient use in floor cutting applications.

**Precise Cutting Control:** The inclusion of a depth indicator in the cutting design enables easy and accurate control of cutting depth, ensuring precise and consistent results.

### CQ-450P

**Easy Engine Startup:** The machine utilizes a multiple V-belt design for the belts, making engine startup convenient and hassle-free.

**Convenient Water Pipe Design:** The machine's water pipes are equipped with detachable copper connectors, allowing for easy replacement in case of blockage.

**Precise Cutting Depth Control:** With a depth indicator, the machine enables precise control of cutting depth, ensuring accurate and consistent results.

### CQ-550P

**Enhanced Durability:** The sealed bearing housing for the blade shaft bearings prevents dust and water infiltration, significantly improving the machine's durability and lifespan.

**Precise Cutting Control:** The inclusion of a depth indicator in the cutting design enables easy and accurate control of cutting depth, ensuring precise and consistent results.



CQ-350P

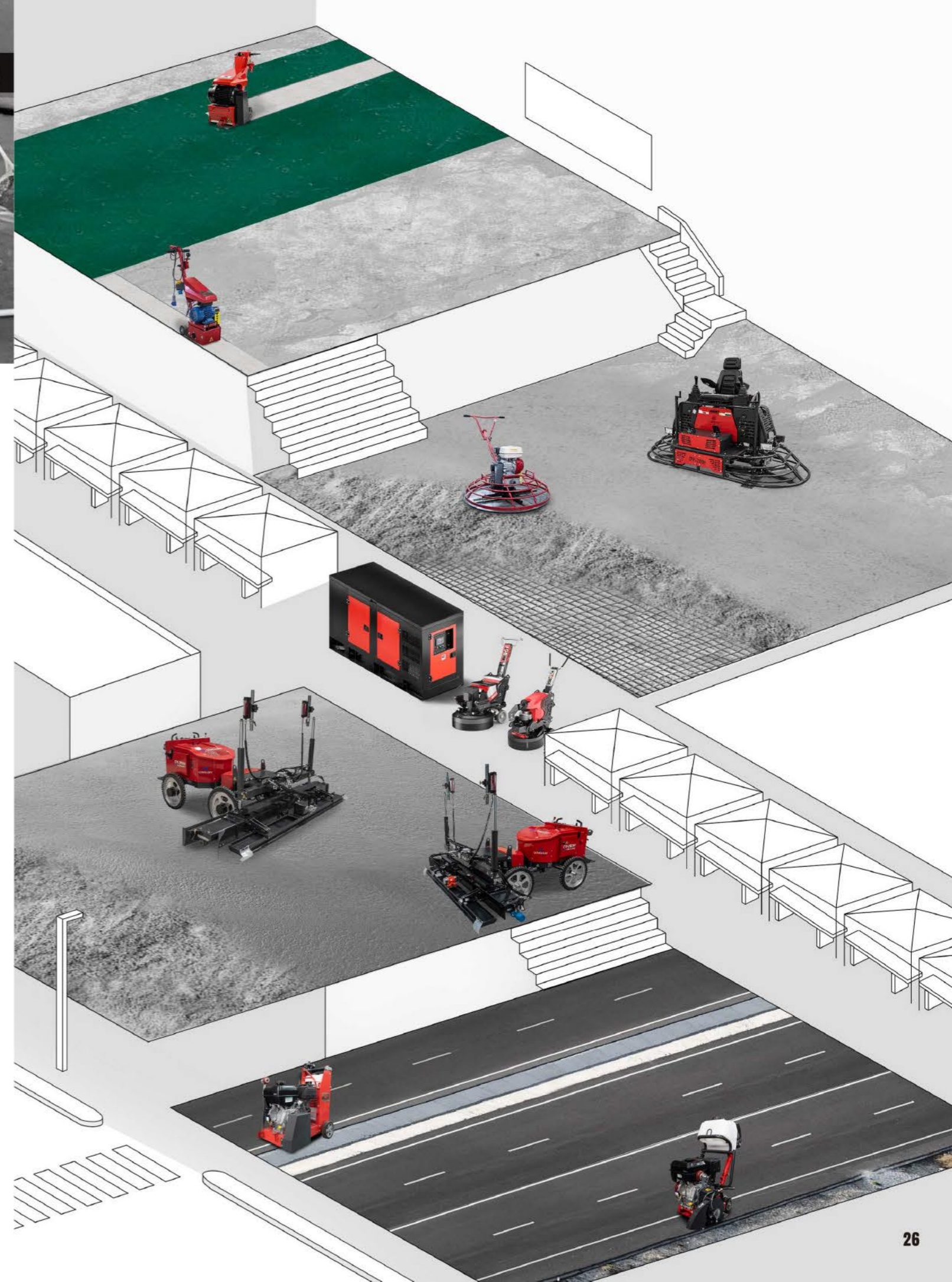


CQ-450P



CQ-550P

Motor Power	10hp	14hp	10hp
Blade Size, Mm	350	450	500
Weight	88kg	130kg	149kg
Engine	B&S 320CC	B&S 420CC	Honda GX 390
Size, Mm	910 × 500 × 860	990 × 630 × 1300	1160 × 560 × 980



# HTG

Diamond tools



**More than 100,000 units of machine in use on construction sites around the world by the end of 2023.**

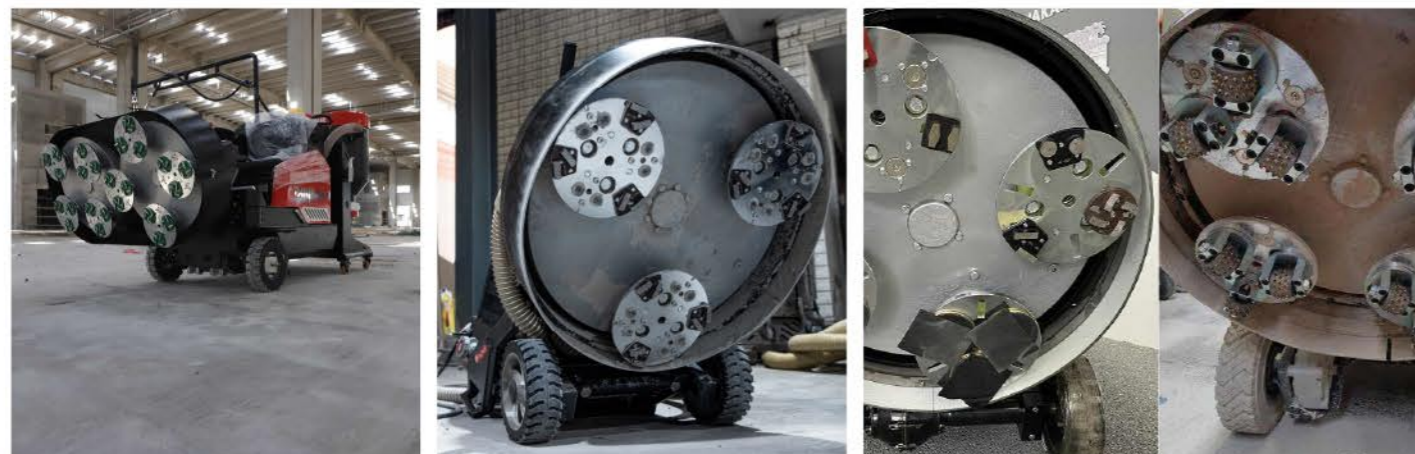
Correct diamond tools work with the high technology equipment generates better finish.

Metal segments are designed for wet or dry floor applications with different bonds for different floor qualities. It is designed for aggressive scratching and exceptional durability with strong grinding capabilities.

Resin pads are designed to get good working efficiency on original concrete and terrazzo floors.

Type	Specification	Grit	Bond
HTG-2T	2*40*10*10mm	16#30#60#120#	VHB HB MB SB VSB XSB
HTG-2Y	2*24*13mm	30#60#120#	VHB HB MB SB VSB
HTG-3Y	3*24*13mm	30#60#120#	VHB HB MB SB VSB
HTG-2C	2*12*12*38mm	16#30#60#120#	HB MB SB VSB
HTG-2L	2*13*16*35mm	16#30#	VHB HB MB SB VSB
HTG-4T	100mm*4*40*10*10mm	16#30#60#120#	VHB HB MB SB VSB
HTG-2PCD-1C	2*1/3PCD*8mm*1C-Left/Right		
HTG-2CPCD	2*12*12*40 with split PCD		
Bush hammers	Teeth No.45		
HTG-DGW-CW	250mm*20T*40*10*10mm	16#30#	HB SB

Type	Specification	Grit	Application
HTG-4CW2	4"*6mm	50# 100# 200# 400#	Wet polishing
HTG-C3510	3.5"*10mm	50# 100# 200# 400# 800# 1500# 3000#	Dry polishing
HTG-XR	3"*10mm	50# 100# 200# 400# 800# 1500#	Dry polishing
Star-Resin Polishing Pads HTG-C310	3"*10mm	50# 100# 200# 400#	Dry polishing
HTG-XZ	3"*10mm	400#800#1500#3000#	Dry polishing
Ceramic Transitional Diamond Grinding pad	3"*10mm	50# 100# 200#	Dry/Wet
Velcro plate adapter	Fits all standard XINGYI and HTG series chassis.		For all planetary disc equipment



Type	Specification	Grit
RFP-38 Premium polishing pads	Diameter: 7" 9" 11"	50# 100# 200# 400# 800# 1500# 3000#
HTG-CDW810 circular polishing pad	Diameter: 8" 9" 10"	50# 100# 200# 400# 800# 1500# 3000#
Sunshine polishing pad	Diameter: 4" 6" 9" 10" 17" 21" 27"	50# 100# 200# 400# 800# 1500# 3000#

The choice of diamond tools depends on the equipment you use, the expected cutting level, the hardness of the bond and the starting grit you need.

Recommended rotation speed (RPM) of planetary discs

- 350
- 400
- 500
- 600
- 800
- 1000
- 1200
- 1500
- 1950

Diamond Grinding Steps / grit

Type	HTG-2T	HTG-2Y	HTG-3Y	HTG-2C	HTG-2L	HTG-4T
#16						
#30						
#60						
#120						

**XINGYI provides full range of diamond tools for different applications.**

- Change tools to ceramic or resin pads
- Remove scratches made by metal discs
- Fill and repair pin holes
- Spray densifier according to material specs
- Check roughness with RA meter after each step
- Polish to final gloss and DOI



Type	ceramic type	HTG-C3510	HTG-XR	HTG-C310/HTG-XZ	HTG-4CW2			
#50						✓	✓	✓
#100						✓	✓	✓
#200						✓	✓	✓
#400						✓	✓	✓
#800						✓	✓	✓
#1500						✓	✓	✓
#3000						✓	✓	✓

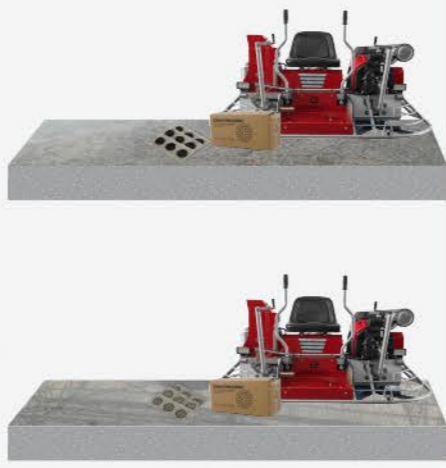
Honing  
Polishing

recommended for hard concrete

recommended for soft concrete and terrazo

recommended for general middle concrete

The mounting pad with the pre-installed patent designed resin discs is suitable for direct mounting on a trowel blade or other form of mounting plate in the market. Different polishing effects from cream to fine aggregate can be obtained by selecting the grit number of 1#-6#.



Shearcreting Power trowel Polishing system  
Suitable on Dry Shake hardener and refine procession

1#		
2#		
3#		
4#		
5#		
6#		

Burnishing machine and pad

400

800

1500

3000