

معرفة للأعمال المعدنية
MAERIFA METAL WORKS

New Industrial Area- 2 Ajman. Mob: 050 3079760 & 056-2022150

“CREATIVE DESIGN ”

New Industrial Area – 02 Ajman Mob: 0503079760 & 056 2022150

Contents

- ▶ INTRODUCTION
- ▶ OUR MISSION
- ▶ QUALITY POLICY
- ▶ QUALITY PLANS
- ▶ HSE PLANS
- ▶ PRODUCT & SERVICES
- ▶ DESIGN & SUPPLY FOR ALL TYPES OF STEEL& FABRIC PRODUCTS
- ▶ DESIGN & SUPPLY FOR ALL FITOUT WORKS
- ▶ SENIOR MANAGEMENT STAFF
- ▶ TRADE LICENSE
- ▶ OUR PRESTIGIOUS CLIENTS
- ▶ REFERENCE LIST OF MAJOR PROJECTS
- ▶ OUR PROJECT PHOTOS
- ▶ LIST OF MACHINARIES

Introduction :

SHADE NET SPECIALITY STRUCTURES LLC. EMERGED AS A NATURAL EXTENSION TO THE EVER EXPANDING SHADE NET STEEL WELDING INDUSTRY & FABRIC FABRICATION NETWORK, AS WELL AS IN RESPONSE TO THE CONTINUOUS REQUESTS FROM THE MARKET AND SATISFIED CUSTOMERS. WITH OUR AFFILIATION WITH SPECIALTY STRUCTURES USA, WE ARE ABLE TO OFFER SERVICES AND TECHNOLOGIES THAT COMES WITH THE US FIRM.

SHADE NET SPECIALITY STRUCTURES LLC IS MANAGED BY A TEAM OF PROFESSIONALS WITH AN AVERAGE EXPERIENCE OF TEN TO TWENTY YEARS' EXPERIENCE IN THE STRUCTURAL STEEL & FABRIC & GLASS INDUSTRY AND KNOWN TO HAVE EXECUTED A NUMBER OF PRESTIGIOUS AND HIGH-PROFILE PROJECTS IN THE GCC AND MIDDLE EAST.

Our Mission :

IT IS OUR MISSION TO PROVIDE TO OUR CUSTOMERS VALUE PRODUCTS AND SERVICES IN THE FIELD OF STEEL FABRICATION AND FABRIC. WE WILL ENDEAVOR TO ACHIEVE THIS MISSION BY:

CONTINUALLY STRIVING TO UPGRADE OUR PRODUCTS AND SERVICES KEEPING IN MIND THE MARKET TREND

MAINTAINING GOOD QUALITY SYSTEM, PROVIDING OUR WORKMEN SAFE, HEALTHY AND NATURAL ENVIRONMENT TO WORK IN WHOLE OBSERVING THE RULE OF THE LAND

TRAINING OUR WORKMEN AND PROVIDING THEM A ATMOSPHERE FOR SELF-ACTUALIZATION.

SEEKING CO-OPERATION OF ALL OUR VENDORS AND ASSOCIATES IN FULFILLING OUR MISSION.

New Industrial Area – 02 Ajman Mob: 0503079760 & 056 2022150

Quality policy :

“INNOVATION THROUGH SERVICE EXCELLENCE”

“CUSTOMER SATISFACTION THROUGH DELIVERY OF QUALITY SERVICES”

SHADE NET SPATIALITY STRUCTURES LLC. IS COMMITTED TO QUALITY SERVICES MEETING CUSTOMERS SPECIFICATIONS AND NATIONAL/INTERNATIONAL STANDARDS WHILE COMPLYING WITH LOCAL LAWS. TO THIS END, THE EMPLOYEES WILL BE TRAINED IN THEIR JOBS AND MOTIVATED TO OBSERVE SAFETY PRACTICES IN WORK.

IT IS OUR CONTINUAL ENDEAVOR TO MAINTAIN HIGH MORAL ETHICS IN ALL OUR SPHERES OF BUSINESS AND BUILD EVERLASTING CUSTOMER-RELATIONSHIPS WHILE ENSURING PROSPERITY FOR EACH MEMBER OF OUR ORGANIZATION.

SHADE NET SPATIALITY STRUCTURES LLC QUALITY POLICY IS DEFINED AND STRONGLY DRIVEN BY THE FOLLOWING MANAGEMENT PRINCIPLES AND BEHAVIORS:

- BUILD A MUTUALLY PROFITABLE RELATIONSHIP WITH OUR CUSTOMERS, ENSURING THEIR LONG-TERM SUCCESS, THROUGH THE UNDERSTANDING OF THEIR NEEDS AND THE NEEDS OF THEIR CUSTOMERS AS WELL
- ACHIEVE OUR COMMITMENTS FOR QUALITY, COST, AND SCHEDULE
- ENHANCE THE SYSTEMATIC RESEARCH AND USE OF BEST PREVENTIVE PRACTICES AT ALL LEVELS AND ENSURE RELIABLE RISK MANAGEMENT
- DRIVE CONTINUAL IMPROVEMENT AND INNOVATION BASED UPON EFFICIENT BUSINESS PROCESSES, WELL-DEFINED MEASUREMENTS, BEST PRACTICES, AND CUSTOMER SURVEYS
- DEVELOP STAFF COMPETENCIES, CREATIVITY, EMPOWERMENT AND ACCOUNTABILITY THROUGH APPROPRIATE DEVELOPMENT PROGRAMS AND SHOW STRONG MANAGEMENT INVOLVEMENT AND COMMITMENT

COMPANY SHADE NET SPECIALTY STRUCTURES LLC TO BE THE BEST PROVIDER OF INSPECTION SERVICES IN THE INDUSTRY. THROUGH THE USE OF THESE GUIDING PRINCIPLES, EVERYONE IN COMPANY IS ACCOUNTABLE FOR FULLY SATISFYING OUR CUSTOMERS BY MEETING OR EXCEEDING THEIR NEEDS AND EXPECTATIONS WITH BEST-IN-CLASS SOLUTIONS AND SERVICES. OUR GOAL IS 100% CUSTOMER SATISFACTION 100% OF THE TIME.

New Industrial Area – 02 Ajman Mob: 0503079760 & 056 2022150

Quality Plans:

- ▶ Customer satisfaction is uppermost in our business and to this end we are committed to our stringent quality management system. It is our quality policy
- ▶ To minimize non-conformances in our areas of operation, and to continuously improve and also implement the quality management system and procedures.
- ▶ To monitor, develop and review the technical and quality needs of the company on a continuous basis and make it relevant to the products and services.
- ▶ To train and support employees for a cohesive teamwork. To work to meet set work schedule.
- ▶ To expand the core business portfolio and diversify as and when opportunities come To achieve consistent profitability and growth of business.
- ▶ As a part of Quality Plans, we have our QUALITY POLICY to realize our business objective. Shade Net Tents reacting is committed produce quality goods & services meeting customers specifications and national/ international standards while complying with local laws. To this end, the employees will be trained in their jobs and motivated to observe safety practices in work.

HSE Plans:

We have well-defined healthy, safety & environment plans formulated taking in to consideration the importance of health and safety of our workmen at their workplace. Our management policies ensure maximum efficiency of workmen and other players in the system while complying with the existing laws of the country.

The safety aspects outlined in the safety plans are observed strictly ensuring negligible violations. We as a company, value Health, Safety & Environment very highly and equal importance is given to them as other business objectives.

We seek the support and co-operation of all our workmen and other employees in Implementation of the HSE plans and ensure highest degree of success. Adequate training is given to all the employee . Good housekeeping in our work place ingrained in our culture. The scraps and wastes generated during the course of our operation are disposed off in scientific way ensuring least harm to the environment.

Product & services:

Design , Fabrication, Supply and Installation of Car park and Shades, Shades Structure, Steel Structure, Canopies, Skylight Fabric Structure, Glass, Cable Mesh, Tents, Ropes & Wire mesh structures for variety of Special Design from canopies to amphitheatres. Our project pictures show the variety of span and scale of structures we have completed. Our steel division also supplies metal works such as special stairs, railings in M S Steel & Stainless Steel.

Design & Execution

- ▶ Building entrance canopies
- ▶ Interior Fit Out Works
- ▶ Interior Design and Project Management
- ▶ Structure design and Project Management
- ▶ Fabric structures – design build solutions
- ▶ Super Span structures
- ▶ Car parks, Sun shades, pool shades
- ▶ Cat ladders, Spiral Stair Case & Stair Cases.
- ▶ Stainless steel handrails
- ▶ Skylights with Glass and steel

New Industrial Area – 02 Ajman Mob: 0503079760 & 056 2022150

Our clients



علي موسى وأولاده القابضة
ALI MOUSA & SONS HOLDING



Sheraton
HOTELS & RESORTS



AGC
Alokozay Group of Companies



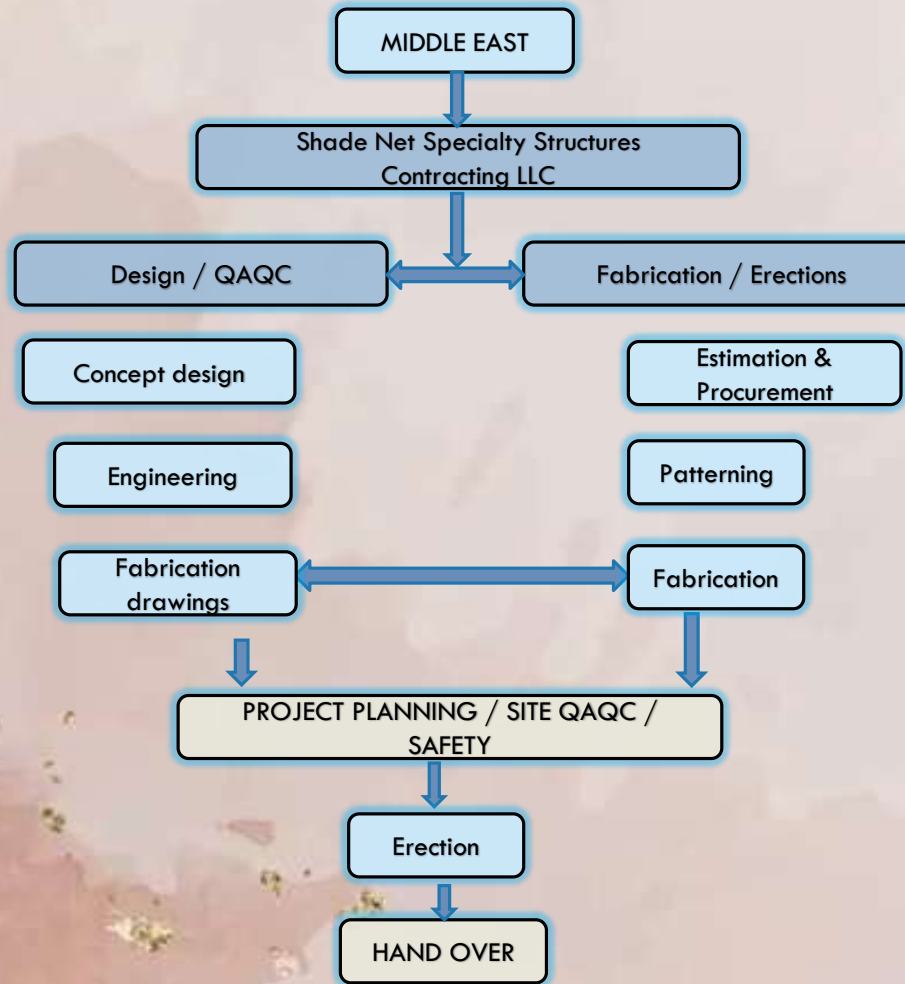
Ithara Group
مجموعة إثارة



ADV
advanced
facilities management

New Industrial Area – 02 Ajman Mob: 0503079760 & 056 2022150

PROJECT EXECUTION TEAM UAE



New Industrial Area – 02 Ajman Mob: 0503079760 & 056 2022150

OUR PROJECTS PHOTOS

New Industrial Area – 02 Ajman Mob: 0503079760 & 056 2022150

AL DHAID SCHOOL



AL MUSTAQBAL SCHOOL MUWAILLAH COMMERCIAL



AL MUSTAQBAL SCHOOL MUWAILLAH COMMERCIAL



INNER ARCH (LOW CANTILEVER)



INNER ARCH (HIGH CANTILEVER)



INNER ARCH (HIGH CANTILEVER)





INNER ARCH (HIGH CANTILEVER)



INNER ARCH (HIGH CANTILEVER)



INNER ARCH (HIGH CANTILEVER)



INNER ARCH (HIGH CANTILEVER)

STAINLESS STEEL 316 HAND RAILS



Spiral Stair Case, Ladders & Walk ways:



New Industrial Area – 02 Ajman Mob: 0503079760 & 056 2022150

Spiral Stair Case, Ladders & Walk ways:



STEEL STRUCTURE PROJECTS











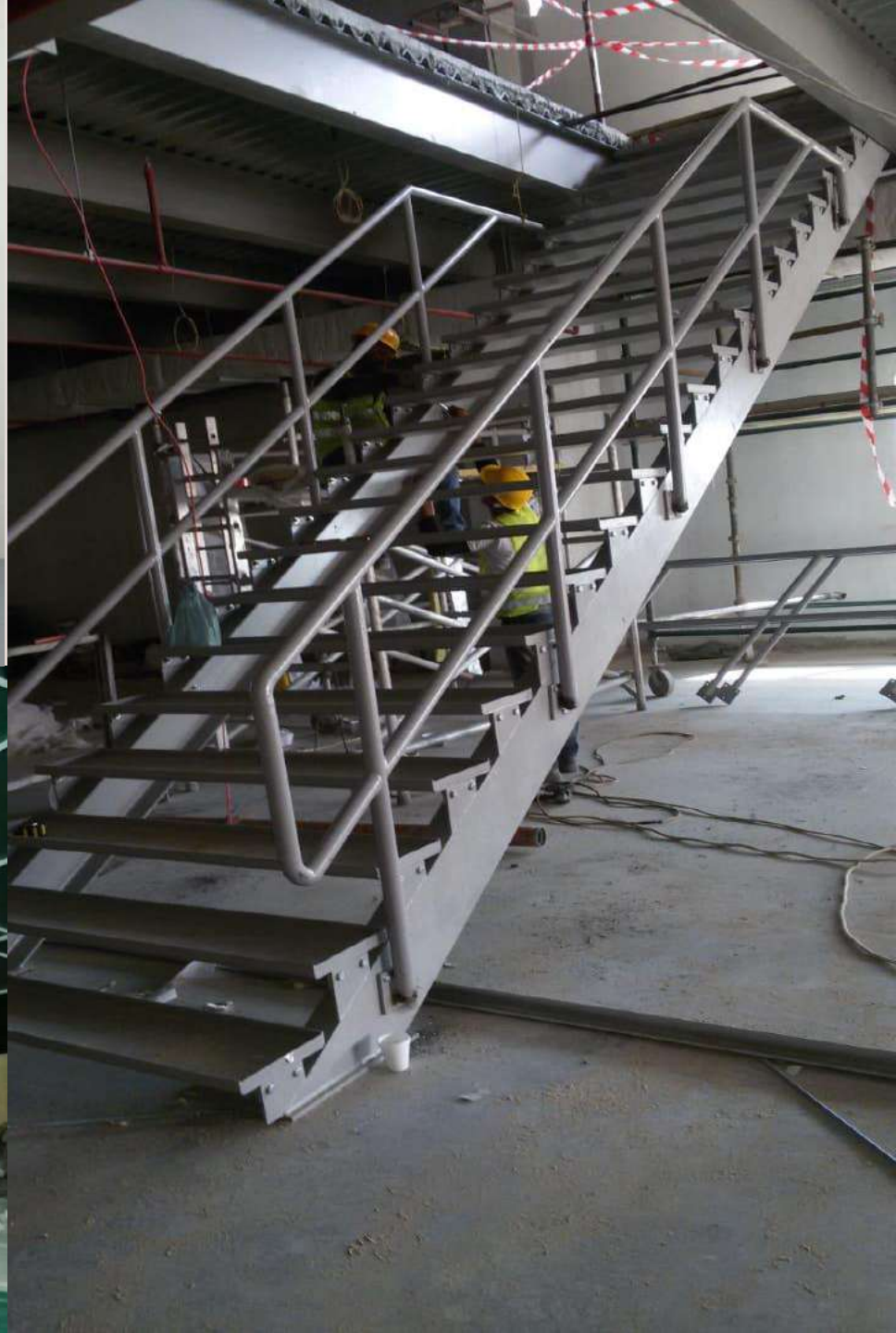




MEZZANINE FLOOR



STEEL STAIRS





**LIFT PIT STRUCTURAL
SUPPORTS**





**STEEL STRUCTURE FOR
Canopy**



MARKAZ MALL ROOF
LIGHTING STRUCTURE
AJMAN



**LABOUR CAMP CABINS 60
ROOMS**

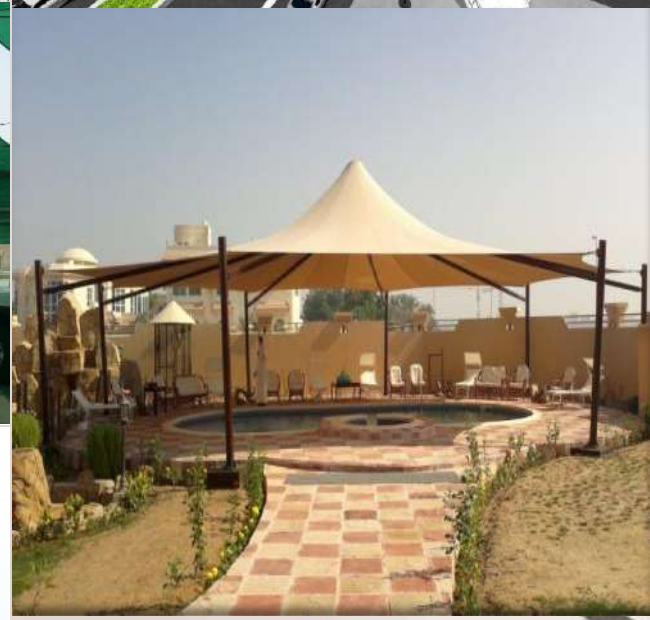












Detailing

Detailing of artistic structures is an art along with science. Our details don't get cladded to hide but are exposed to view. Fabrication & installation is also made easy with special attention to details

- Architectural elegance
- Structural strength
- Constructability
- Fabrication methodology
- Fabrication tolerances
- Installation tolerance
- Integration with other materials
- Shipping limitations



Thank you



معرفة للأعمال المعدنية

MAERIFA METAL WORKS

New Industrial Area- 2 Ajman. Mob: 050 3079760 & 056-2022150