

# BROCHUURJE

## OUR PRODUCTS

WITH STATE OF THE ART FABRICATION SOLUTION



**FIRATPEN PIMAPEN VEKA aluplast ROPLASTO**

## AL HABIB® DOORS SYSTEM:

This style of door can also be automated for workplaces and manual for the home, again providing you with choice and flexibility in design. Some sliding doors can also offer a tilting window where you can let the fresh air in without sliding the door fully open.

## AL HABIB® CASEMENT DOORS

A stunning feature to entrance doors, casement doors generally comes with large glass panels that are attached



## AL HABIB® Benefits of Aluminium Doors

- Can come with advanced hardware and mechanisms for easy handling
- Easy to operate doors once they are installed
- Offer high levels of security
- Durable and robust against the elements
- Aluminium doors offer strength, maximizing your safety and security
- Resistant to corrosion
- Environmentally friendly as they're also recyclable.



## AL HABIB® WINDOWS SYSTEM

Our Window is a projected top and side hung window system perfect for the residential market. The Casement window offers a diversity of window configurations to best suit your specific Building requirements. The Casement is limited to the following vent sizes: Maximum top hung vent dimensions of 1000mm x 750mm and maximum side hung vent dimensions of 600mm x 1200mm. The Horizontal Sliding Window is perfect for the domestic market. It is designed to be lightweight,



## AL HABIB® WINDOWS SYSTEM

The Aluminium Vertical Sliding window is an Aluminium window that slides open from top to Bottom or bottom to top. The Aluminium Vertical Sliding window has got two sliding panels that will allow you to have the open part of the window either at the top or the bottom of the window. The Aluminium Vertical Sliding window is ideal for narrow passages as it will not cause an obstruction into the passage when open, unlike the Top Hung or Side Hung windows Very often sliding windows



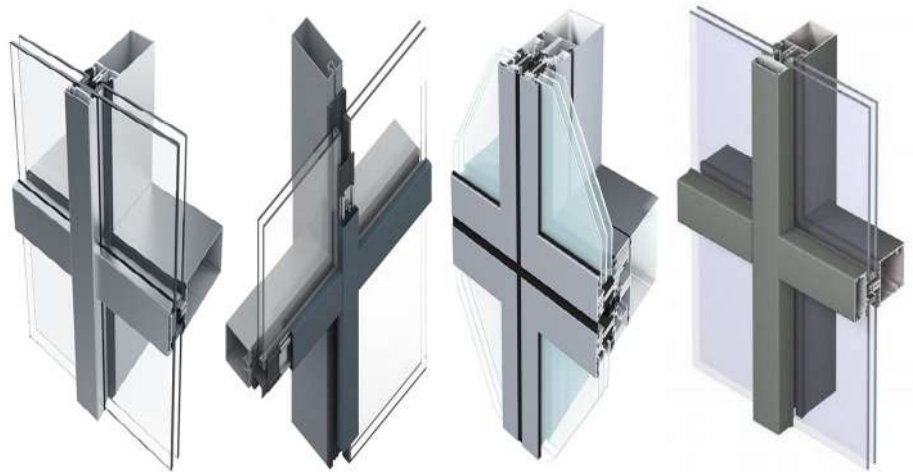
## AL HABIB® CURTAIN WALL / FACADE

A curtain wall is defined as thin, usually aluminum-framed wall, containing in-fills of glass, metal panels, or thin stone. The framing is attached to the building structure and does not carry the floor or roof loads of the building. Generally speaking, there are two main types of curtain wall systems, unitized curtain wall and stick curtain wall. Though aesthetically similar, the two are manufactured differently, and are better suited to specific types of



## AL HABIB® CURTAIN WALL / FACADE

The aluminum curtain wall (ACW) acts as both buffer & insulator by keeping air & rain outside the buildings. In the case of taller buildings, ACW reduces sway by diffusing kinetic force through frames and ensures a more secure structure. ACW improves the thermal efficiency of the buildings. Curtain walls are separated into three (3) main categories: Stick type (standard), structural and unitized curtain walls. The primary purpose of a curtain wall system is to protect the building interi-



## AL HABIB® ACP CLADDING

Aluminium cladding is a type of cladding made from a thin layer of aluminum coating on the exterior. Some Aluminium cladding is structured as a layer of polyethylene plastic in between two external Aluminium sheets. However, the safest type of aluminum cladding is solid Aluminium coated with heat resistant powder. Aluminium cladding is an ideal choice for external building envelopes, owing to its durability and near-limitless colour range. Combining longevity and aesthetics, it



## AL HABIB® ACP CLADDING

normally, aluminum facade panels can be subdivided into three types: aluminum cladding, aluminum composite panel, and aluminum honeycomb panel. Panel types are selected according to the specific application. The aluminum wall panel is made of 3000 series or 5000 series aluminum alloy. Aluminium Composite Panels are **sandwiched panels that have layers of Aluminium sheets with the polyethylene core**



### HD SMART GLASS® SYSTEM

The revolutionary tech product safeguarding you under privacy/ and/or comfortable transparency within a click of a button. The 0.4mm Film that enables advanced ability of privacy and/or transparency within a switch of a button. Our product in HD giving time tested performance



### HD SMART GLASS® SYSTEM

30 watt, 50 watt, 100 watt, 200 watt, 300 watt, 500 watt and 1,000 watt. Each 8-10 watts/square meter. In HD Smart system following operative / electrical parts Transformer & Remote giving functional control in your hand.



Remote



Transformer

### HD SMART GLASS® SYSTEM

**Commercial Offices** Mainly used for individual offices, private meeting rooms, interviews, divided partitions, or the external facades. HD Film / HD Glass has endless benefits when committing its advantages within glass panels.



### HD SMART GLASS® SYSTEM

We are operating now more than 07 countries not only in Asia and Africa but also in America. Our commitment to provide state of the art technology at your door step sharing core values of expertly with state of the art privacy solution.

We are officially available in  
**UAE, USA, Qatar, Saudi Arabia, Bahrain  
 Egypt And Oman.**

HD is completely assembled and customized from its head quarters in the  
**UNITED ARAB EMIRATES**

### AL HABIB® SHOWER ENCLOSURE

A shower enclosure or cubicle is the panels that enclose your shower area, protecting the rest of the bathroom from splashes. There are a variety of ways to enclose your shower, including glass panels, doors that slide, pivot or fold open or even walk-in options. A frameless glass shower enclosure is most popular for both compact as well as spacious bathrooms as it offers unobstructed views and long sight lines in the bathroom



### AL HABIB® GLASS PARTITION

Mid-sized glass partition wall configurations are often referred to as room dividers, and they are ideal for accent walls, transparent walls, and some office cubicles. Room dividers are suitable for creating a larger partition or one that includes a glass door.

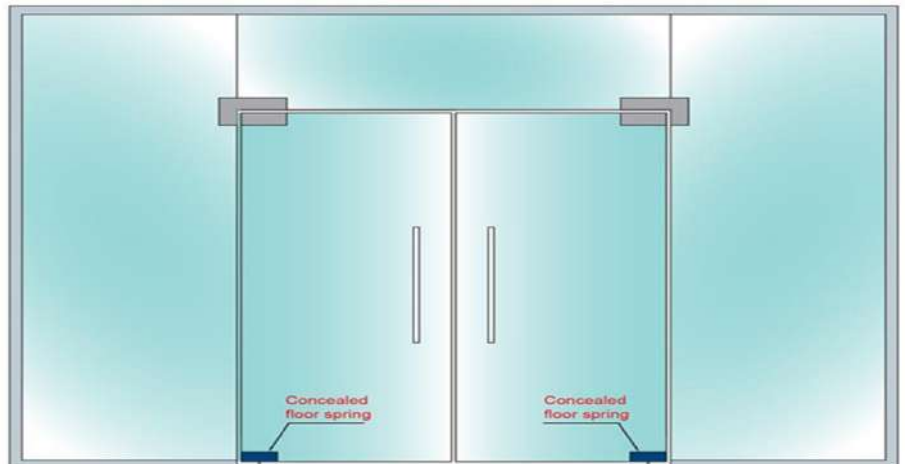
Aluminum is typically the preferred building material for holding framed glass partitions in place. This light-weight material lends sufficient



### AL HABIB® FRAMELESS DOORS

A frameless interior door is a very unique door in that the frame is hidden from view and the door panel now becomes the main feature. It is a system that employs a Concealed Frame that sits embedded in your wall and is hidden by either drywall or wall paneling. Furthermore, Hidden or Concealed Hinges are employed.

AL HABIB® Frameless glass doors are made by creating a thick glass plate, typically between 1/2" and 3/4" thick, depending on the size



### AL HABIB® GLASS HANDRAIL

Glass railing has stunning visual impact, adds openness, makes spaces feel bigger and facilitates light flow. It adds luxury and value to a home and when designed and installed correctly, is incredibly safe and functional.

While glass is often regarded as a fragile material, this is not the case with engineered glass railing systems. To ensure that glass railings are as safe as possible



## AL HABIB® GLASS BALUSTRADE

A balustrade is a railing (handrail) and the row of balusters (posts) that support it. And yes, it is spelt "balustrade", although it is commonly misspelt as ballustrad, ballustrade or balluster. A balustrade can also be known as railing, rail, banister, handrail and parapet.

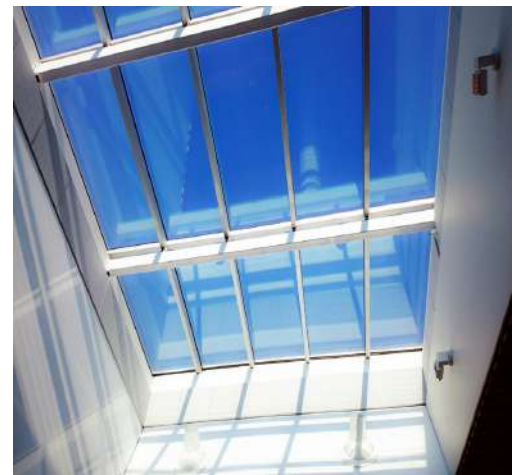
Tempered glass, or toughened as it is typically called, tends to be the most popular choices for balcony balustrades whether framed or frameless.



## AL HABIB® SKY LIGHT

Skylights and roof lights are more general terms and are often interchanged. **Skylights generally refer to windows fixed into the roof, similar to roof windows.** However, they do not open, unlike roof windows, and have fewer specifications.

There are three main types of skylights, **ventilating (sometimes called "roof windows")**, fixed and tubular. They come in a range of different shapes



## AL HABIB® CONSERVATORIES

Conservatories, or Solariums, are a fantastic and beautiful add on to any home, ideal for letting natural light brighten up otherwise dark rooms.

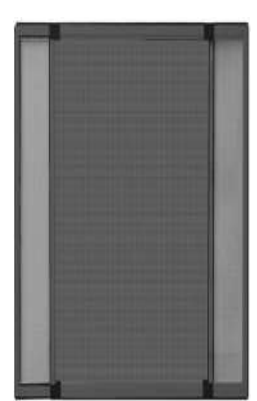
Whether it's a reading room or an area for hosting guests and friends, **AL HABIB®** conservatories are the perfect place for relaxing and enjoying the sun without the heat.



## AL HABIB® FLY SCREEN

Fly screens can be fitted inside or outside depending on whether your window/door opens inwards or outwards. If your window/door opens outwards the fly screen will need to be fitted on the inside. If your window/door opens inwards the fly screen will need to be fitted to the outside.

Ten to fifteen years, although it has a life span of up to ten to fifteen years, the UV



## AL ALAM® METAL GATES

### BEST GATE SIZE

The gate needs to be a little wider than your driveway entrance. For example, if your driveway measures up to nine feet, six inches, the ten-foot gate will fit best. Normal gate height 6' is standard gate height is measured as column height beneath capitol. Standard space under gate is 4" (if larger space is needed to accommodate grade, increase column height as necessary).



## AL ALAM® METAL GATES

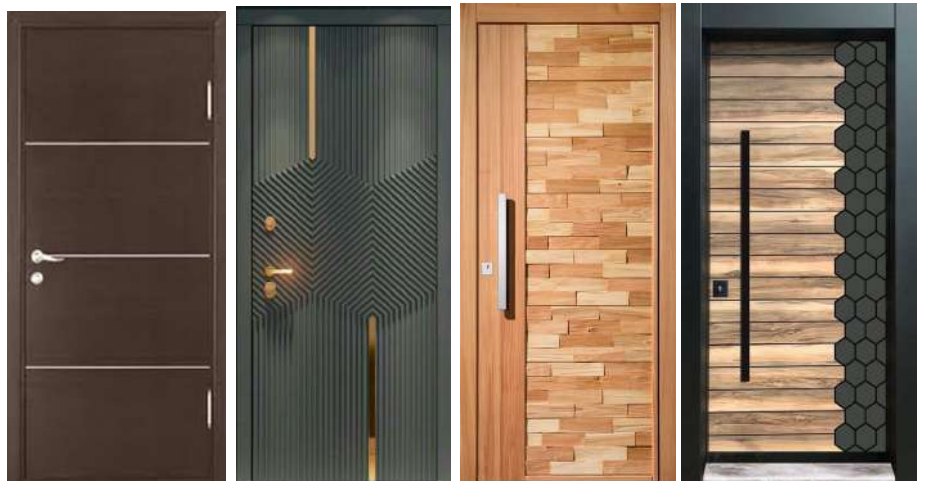
### PERFORMANCE

Steel lasts longer, requires fewer repairs, and is sturdier than other products. It outperforms wood, aluminum, and fiberglass in security, fire ratings, sound reduction, vandal resistance, and other demanding environments. In fact, even when those other materials try to boost their results with special cores or other techniques, they still can't match the performance and longevity of hollow metal steel.



## AL ALAM® METAL DOORS

Doors With strength and durability comes a lower total cost of ownership. Properly installed and maintained hollow metal doors often last 30 years or longer. As the years pass, steel doors can be inexpensively repaired in the field while softer, less durable wood and aluminum doors will have to be replaced.



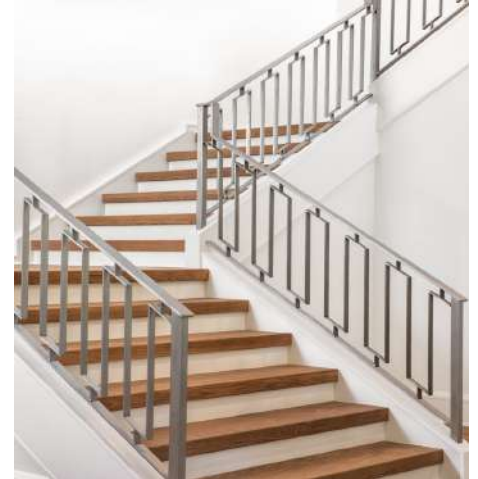
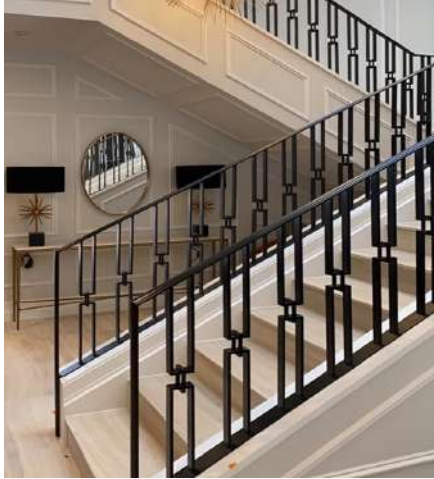
## AL ALAM® METAL DOORS

With our state of the art solution of the doors, Speaking of the environment, steel doors and frames are smarter for the planet. Since steel is the most recycled material in North America, your doors and frames have a life far beyond your project. It can be recycled endlessly into new steel products. This closed-loop life cycle provides many environmental and economic advantages.



### AL ALAM® METAL STAIRCASE SYSTEM

A handrail, also called a banister, is **the part of the staircase that people hold onto for support when going up and down the stairs**. The handrail must provide stability and a continuous guide  
Handrails and stair railings – they sound like pretty much the same thing, right? They're not. **While stair railings are simply railings on stairs**



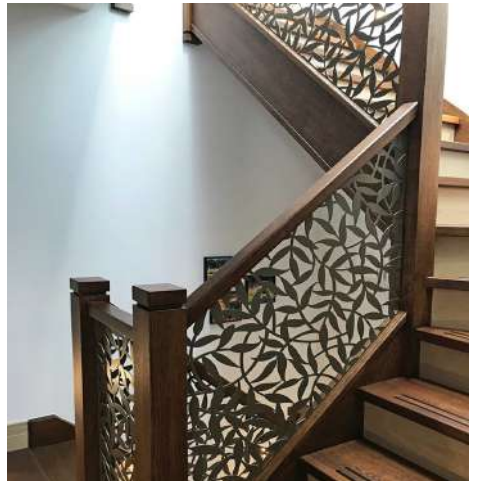
### AL ALAM® METAL STAIRCASE SYSTEM

Handrails have a dual purpose. Yes, they **assist people in safely navigating stairs, but they can also act as a barrier, helping to guide and control access**. – Something to grab – in the event of missed footing, a trip or simply losing balance, handrails are a great safety line.



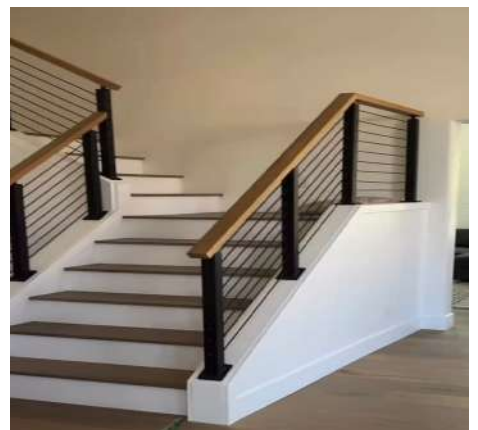
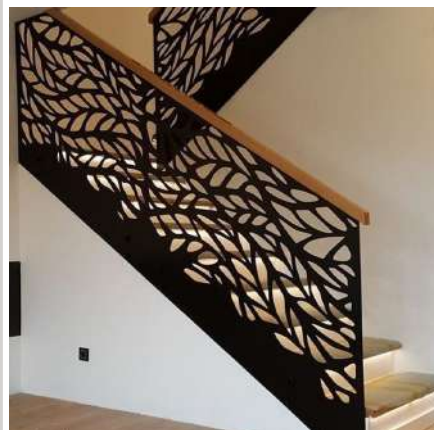
### AL ALAM® METAL HANDRAIL

The importance of handrails is generally put down to safety, **using rails on stairs can stop people from tumbling down them**. Stairs that don't have rails can be dangerous for anyone, especially young and old people



### AL ALAM® METAL HANDRAIL

In addition to **maintaining one's balance and stability**, handrails can also make carrying heavy objects easier. They can keep you from falling off or stumbling down by acting as a guide while you're carrying a cumbersome object and climbing a ramp or a set of stairs





## AL ALAM® METAL BALCONY

Classically referred to as a “**balustrade**,” the balcony railing got its name from the Italian word balaustra, meaning wild pomegranate flowers

Overloading a balcony could result in a safety hazard that puts you or someone else in danger. That being said, generally speaking, balconies are load-rated to **50-100 pounds per square foot**.



## AL ALAM® METAL BALCONY

Different types of balconies

- Cantilevered balcony.
- Hung balcony.
- Stacked balcony.
- False balcony.
- Mezzanine balcony.
- Loggia balcony.



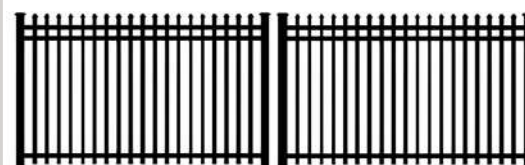
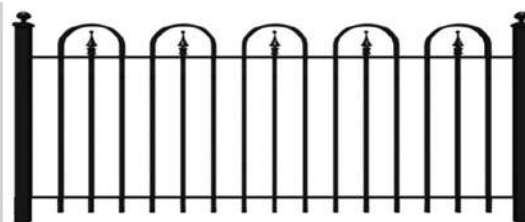
## AL ALAM® METAL FENCE

- Long-lasting: **Metal is one of the most durable of all fencing materials**. Hollow steel fences last upwards of 20 years. Aluminum fences, as well as solid metal and iron ones, can last a lifetime. Low-maintenance: Apart from periodic repainting to control rust, metal fences need no maintenance



## AL ALAM® METAL FENCE

- There are three main types of metal fencing: **aluminum, wrought iron and chain link**. All have their strong points and weak points, but any of them will be a great choice to use to build your fence.
- The wrought iron fence is the strongest and most long-lasting fencing option available. Featuring a classic design with wide spaces that beautifully display landscape and gardens, you won't find more a suitable option



### AL ALAM® METAL CAT LADDER

Roof ladders are the only type of ladder to ensure safe and secure access to a roof.

Their unique design allows you to clip a ladder onto the roof using the fitted hooks. Roof ladders are fitted with bearer bars too – allowing weight to be spread and ensuring roof tiles are protected. Roof ladders are easy to use too

As a rule of thumb, **a 15-18ft ladder will suit a single-story building while for a two-story building, a 20-22ft ladder should do the trick.** However, this is only a rough



### AL ALAM® METAL MEZZANINE SYSTEM

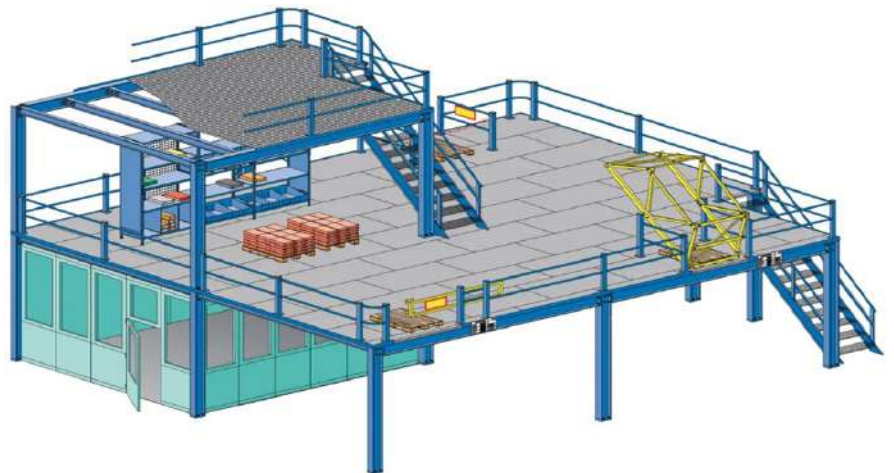
A mezzanine floor is an intermediate floor built between two main floors or the floor and ceiling of a building. It covers a specific area rather than extending over the entire floor space.

Mezzanine floors are usually made of a combination of steel, concrete, wood, stainless steel



### AL ALAM® METAL MEZZANINE SYSTEM

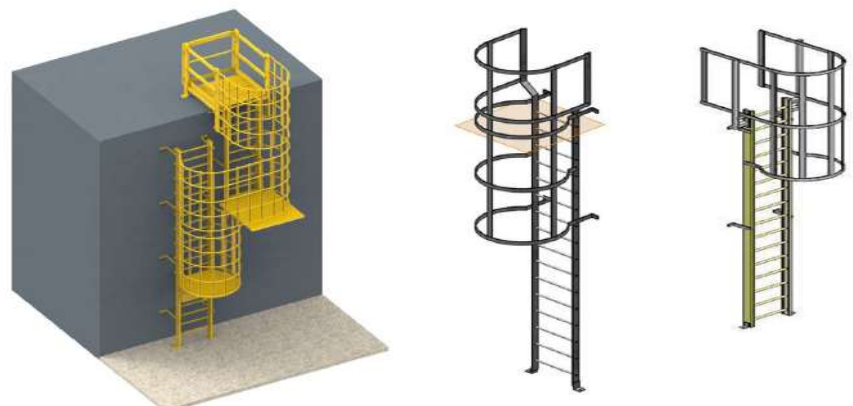
Mezzanine floors from Premier Storage Projects can utilize your redundant vertical space and are cost-effective compared to extending your building. We can offer you a full service, from initial planning and design through to installation and commissioning. We believe that forging good working relationships is key



### AL ALAM® METAL CAT LADDER SYSTEM

Roof ladders are fitted with bearer bars too – allowing weight to be spread and ensuring roof tiles are protected. Roof ladders are easy to use too

As a rule of thumb, a 15-18ft ladder will suit a single-story building while for a two-story building, a 20-22ft ladder should do the trick. However, this is only a rough



## AL ALAM® METAL PERGOLA

pergolas were designed to **add shade to your backyard space**. They are excellent for providing relief from the harsh, direct rays of the sun while allowing sunlight access to fill the space. Although, as a stand-alone structure, pergolas do not provide full shade, their versatile structures allow many shade options

The key distinguishing feature between a gazebo, pergola or pagoda is the roof canopy. **A gazebo generally includes a permanent roof canopy,**



## AL ALAM® METAL PERGOLA

- Creates a Designated Entertaining Space.
- Adds Value to Your Home. ...
- Provides Additional Space for Plants. ...
- Offers Privacy and Shade. ...
- Has Flexibility in Design and Materials. ...
- Enhances Your Landscape's Beauty.



## AL ALAM® METAL CANOPY

A canopy is an overhead roof or else a structure over which a fabric or metal covering is attached, able to provide shade or shelter from weather conditions such as sun, hail, snow and rain. The steel structure canopy is a kind of engineering facility used to keep out rain and high-altitude falling objects. It is mainly located at the entrance and exit of buildings. With the rapid development of the economy, the demand for steel structure canopies is also increasing



## AL ALAM® METAL CANOPY

The design employs a large canopy structure, economically constructed but carefully proportioned and detailed, to provide for a series of outdoor living spaces arranged around a large central courtyard



### AL ALAM® METAL CAR SHEDS

This car parking shed area protects the car from damaging ultra UV rays, solar radiation. It also protects the car from heavy rains, dust, storm, wind, insects. It also protects the car from birds drooping that usually happens when you park your car under the tree.

**A prefabricated structure called a car shed is made to keep a car, tractor, bus, or other types of vehicle.** Modular garages, portable garages, and garage sheds are other names for car sheds



### AL ALAM® METAL CAR SHEDS

A Car parking shade is like a mini roof that you can put over your car to protect it from the elements. Think of it like an umbrella but for your vehicle. It's usually made of sturdy materials like **aluminum or steel** and is covered with a weather-resistant fabric like PVC or HDPE

Sheds are used **to store home and garden tools and equipment such as lawn tractors, and gardening supplies.** In addition, sheds can be used to store items that are not suitable for indoor storage,



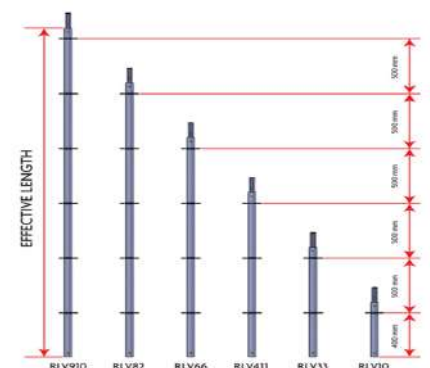
### AL ALAM® METAL SCAFFOLDING

We offer **Cup lock Scaffolding System.** Our Cup lock Scaffolding System uses pressed steel bottom cups welded at spacing of **500mm and 1000 mm onto the 40 NB steel pipes** paired with malleable cast top cups. A pin is welded at the top of these cups which admit ledger blades of the ledgers and lock on to the ledgers when top cup is twisted downwards. This Cup lock Scaffolding System is very versatile and is used as access as well as load bearing scaffolds



### AL ALAM® METAL SCAFFOLDING

We offer a comprehensive range of Scaffolding Systems including Cup lock Scaffolding System, Horizontal Scaffolding System Vertical Scaffolding System and Wedge Lock Scaffolding System. We have a team of highly skilled engineers and state of the art infrastructure to ensure high quality of Scaffolding Systems. On top of that, our Scaffolding Systems are very reasonably priced.



### AL HABIB® ACCESSORIES

Ironmongery products such as door handles and window fitting, can bring together the design of a building interior. Apart from their aesthetic function, ironmongery items **play an essential role in the safety and functionality of a building**

What is hardware and ironmongery in architecture?

**Architectural ironmongery refers to the door and window hardware used in the construction and furnishing of buildings.** It includes a wide range of items



### AL HABIB® CAST ALUMINIUM

Cast aluminum is created when aluminum is heated to extremely high temperatures. The molten aluminum is then molded into a shape and cooled to craft a wide variety of products. Cast aluminium is a strong and durable material that can withstand high temperatures. Cast aluminium is resistant to corrosion and does not rust. Cast aluminium is easy to recycle and can be reused many times over. Cast aluminium conducts heat well and can be used for a variety of cooking applications



### AL HABIB® VILLA PROJECTS

PROJECT : EMAAR SOUTH STACKED TOWNHOUSES  
 LOCATION : EMAAR SOUTH, DUBAI  
 CONTRACTOR : PIVOT ENGINEERING & GEN. CONTRACTING  
 CONSULTANT : U + A ARCHITECTS  
 CLIENT : EMAAR PROPERTIES



### AL HABIB® VILLA PROJECTS

PROJECT : 39 VILLAS  
 LOCATION : OUD AL MUTEENA, DUBAI  
 CONTRACTOR : BHATIA GENERAL CONTRACTING CO.  
 CONSULTANT : KHATIB & ALAMI ENGINEERING CO.  
 CLIENT : MOHAMMED BIN RASHID HOUSING EST.



### AL HABIB® VILLA PROJECTS

PROJECT : 46 VILLAS  
LOCATION : MAKAN HATTA, DUBAI  
CONTRACTOR : UNITED ENGINEERING CONST. CO.  
CONSULTANT : ARIF & BINTOAK CON. ARCH. & ENGR.  
CLIENT : MOHAMMED BIN RASHID HOUSING EST.



### AL HABIB® VILLA PROJECTS

PROJECT : 35 VILLAS  
LOCATION : BUTAIN AL SAMER RAS AL KHAIMA  
CONTRACTOR : AYA CONSTRUCTION  
CONSULTANT : GECECO ENGINEERING CONSULTANT  
CLIENT : SHEIKH ZAYED HOUSING PROGRAMME



### AL HABIB® VILLA PROJECTS

PROJECT : DUBAI POLICE STATION  
LOCATION : AL KHAWANEEJ 2<sup>ND</sup> DUBAI  
CONTRACTOR : COMFORT HOUSE BUILDING CONTRACTING  
CONSULTANT : AL AJMI ENGINEERING CONSULTANT  
CLIENT : DUBAI POLICE



### AL HABIB® VILLA PROJECTS

PROJECT : SERENA 50 VILLAS  
LOCATION : WADI AL SAFA 7, DUBAI  
CONTRACTOR : PIVOT ENGINEERING & GENERAL  
CONSULTANT : GINCO GENERAL CONTRACTING  
CLIENT : DEWAN ARCHITECTS & ENGINEERING  
CLIENT : DUBAI PROPERTIES

