



PROFILE & PRE QUALIFICATION



TABLE OF **CONTENTS**

MD Message

About Us Trade License & TRN

Objective, Mission & Values

Organization Chart

Our Services

Quality Policy

Safety & Expertise

Safety Policy

Environmental Policy Statement

Our Clients

Projects

Permits & Approvals

ISO Certificate

Contact Us

ARM Metal Const Ind. L.L.C - Steel Division of Bombay Group



MD MESSAGE

Our most valuable clients, Strength is perceived in terms of size, endurance and success. We have also added a fourth dimension to it, which is social responsiveness and we are very proud of our accomplishments in all these spheres.

We have been associated with the UAE region from its early formative years and are proud to be an integral part of its phenomenal growth and progress. The UAE economy has been developing at a faster rate than anywhere else in the world thanks to its natural resources, political stability and visionary leadership.

Further pages will give you a vivid picture of our prominent role in the business sector and a saga of our success in achieving our objectives. Bombay Contracting attributes its success to its fundamental philosophy of providing high-quality services within a budget and delivering the project or task within the stipulated time frame while still maintaining the highest degree of safety and quality in all our endeavors.

I would like to sincerely thank you for sparing your valuable time to go through the data and information about Bombay Contracting.

Managing Director

Mohamed Bilal S



ABOUT US

UAE Based Bombay Contracting is a vertically integrated construction company. We are a specialist in the creation of opulent living and working spaces. Through in-house capabilities in space planning, individualized project management and construction, we provide end-to-end bespoke solutions for discerning private owners as well as high-end residential and commercial developments. Besides turnkey works, we undertake structural steel, Soft and hard landscape, electromechanical and Joinery works. With 15 years of experience in UAE construction industry M/s Bombay Contracting LLC has a reputation for quality and trust.

MISSION

It is both the mission and the corporate policy to always provide the client with the safest and best quality of construction job possible while maintaining a balance of delivering the agreed project schedule within budget and as per the client's expectations.

VALUES

BC maintains a clear vision to always strive to provide and maintain a safe and healthy workplace where quality, safety, schedule and cost are paramount and customer satisfaction is always held at the forefront.

TRADE LICENSE & TRN



OBJECTIVE

will endeavor to put the well-being and safety of both the employees and client first and foremost. We will always strive to treat our employees as our own family; by doing so, we aim to always deliver them home to their families in a safe and sound condition.

We seek to continue to grow and become the best and most prolific company in the region in terms of safety and quality while making a fair and reasonable profit.

We are committed to constantly reinvent the internal procedures of the company with state-of-the-art construction technology; driven by a rigorous program of constant testing and continued evaluation of results. The lessons learned would be extracted from both our own company's observations as also those of the clients we serve.





CIVIL WORKS

Bombay Contracting LLC specializes in construction, foundations, and shoring excavation. Our company has earned its reputation as a quality-oriented operation, adopting the latest technologies, and maintaining the highest standards of quality control.

STEEL STRUCTURE

Our mission is to help you reach your full potential. By leveraging our vast experience and expertise in steel, our team assists with your plans and projects. Our erection team is made up of highly qualified and well-trained project managers, site engineers and safety officers.

ALUMINUM & GLAZING WORKS

Through experience and commitment, we hold our quality and workmanship to the highest standards. Bombay Contracting designs, manufactures, and installs aluminum works with the best quality for both commercial and residential applications.

NATURAL / ARTIFICIAL STONE WORKS

Bombay Contracting has the talent, technical expertise, and state-of-the-art equipment to handle jobs of any size. We provide a wide range of construction services. Our services include home renovations, Fit out works, road construction, and corporate and industrial construction.

ELECTRICAL MECHANICAL WORKS

Our electromechanical division, has honed its operational and technical expertise to emerge as a formidable name in the industry of construction & post building services, providing specialized design & execution solutions fabrication through to turnkey installations in the industrial, mechanical and electrical engineering sectors.

JOINERY & FIT OUT WORKS

Bombay Contracting delivers high-quality joinery work with the highest standards. Clients repeatedly return to us because they expect quality in their build and final product that will endure the test of time. Our skilled workers have extensive experience with joinery and woodworking. Bombay Contracting's Joinery department has a team of professional carpenters, painters, and supervisors who are capable of handling medium to large-scale interior joinery projects.

GENERAL MAINTENANCES

We specialize in building maintenance, believing that prevention is always better than cure. Buildings degrade and decay because of unattended maintenance. Over time, it can cause harm and be a threat to the safety of the occupants. Therefore, property owners hire professional management and maintenance services. Engineers on our team have solid experience with preventative maintenance, so they can ensure that buildings will be disrupted as little as possible in the future.

FACILITY MANAGEMENT

Bombay Contracting is known for its fire protection expertise. Experts in fire safety can provide consulting, design, installation, and commissioning services for a wide range of environments. We offer turnkey solutions when it comes to fire protection, supplying, installing, and providing complete, ready-to-operate systems. Our staff is dedicated to protecting people and property from fire and we have extensive experience in fire protection.

HARD & SOFT LANDSCAPING WORKS

By designing and creating a beautiful landscape, and then implementing it on your property, our landscaping professionals can give any part of your property some life and make your friends and family green with envy.

Our company believes in creating unique and elegant lawns and landscapes for commercial and residential properties in the UAE. With skilled landscape architects and designers, we help you develop a gorgeous landscape for your home or business.

QUALITY POLICY

It is the policy of Bombay Contracting, here after called BC, to provide a reliable and defect-free quality work and service that meets or exceeds client satisfaction as well as to comply with the requirements of ISO 9001: 2008 and to the project requirements in a timely and cost effective manner, while achieving excellence and safety for all personnel, the public and the environment. Quality is herein defined as conforming to the requirements and project specifications cited within this manual in all stages of construction.

It is the responsibility of personnel to ensure that the scope of work is executed in a manner consistent with the requirements of this manual and the Project Documentation (Drawings and Specifications). This assurance is achieved through the implementation of the Quality Management System Plan.

The Quality Control Program (QCP) is established to ascertain that all construction activities are performed in complete conformance with the approved construction drawings, relevant project specifications and international standard requirements.

All BC personnel will comply with and support the QCP and all personnel who are directly involved in this project shall be continuously kept informed of contract requirements as work progresses. The authority and responsibility for administering the QCP is assigned to the Site Manager.



SAFETY & EXPERTISE

SAFETY

BC's primary concern is the safety of its employees and every possible effort to mitigate the potential of risk seems less when one considers the changing scenarios that evolve on a daily basis in a business like ours. But we at BC challenge every hazard and endeavor to bring down the risk to a manageable level before our employees have to deal with it.

The implementation of our Occupational Health and Safety program is directed by the top-level management, so as to ensure that all aspects under this domain are included in the program and managed as well as implemented to keep all personnel safe.

Our Safety programs include Hazard Identification, Risk Assessment, Training & Communication including the awareness of statutory and regulatory requirements, Documents & Records Control for effective analysis and development of safe work plans.

These also include Identification of Emergency Situations and Defining of Response Plan, OH&S Performance Monitoring, Accident/Incident Investigation, Corrective & Preventive Action, Internal Audits, Management Review, etc.

EXPERTISE

From a small serve job to large design-build projects, we cover the full spectrum of commercial construction. You can count on us to complete your commercial construction project on time, on budget and with a client-centered approach.

BC's Safety Policy is to fully recognize the importance of Safety, Health, Welfare & Morale of all employees and also for ensuring a safe and healthy working environment at all times, in accordance with Management Health, Safety and Environmental General Instructions.

- » To establish the highest standards of safety. All project personnel from Management
- » Staff and below shall comply with the safety rules and regulations and also follow the code of Conduct for Safety laid down by the Project Management/Client. To ensure that each and every one of us has a duty and responsibility towards safety of self and others.
- » Meeting the applicable statutory requirements.
- » Complying with safety rules and regulations and eliminating all unsafe activities.
- » Investigating all possibility of accidents and taking appropriate safety actions to avoid any risk of health or untoward incident.
- » Encouraging effective implementation of safe working procedures and practices.
- » Maintaining a hazard-free, clean and safe work environment at project sites.
- » Enhancing the safety procedures and knowledge through frequent education and training, through advanced quality-related technology, of all employees.
- » Complying fully with UAE Laws and Statutes standards regarding HSE.
- » Motivating all employees to prevent unsafe work habits and conditions through
- » incentive and appreciation.
- » Providing and establishing required vigilance for ensuring that HE measures are being taken at the right time and correct procedures with corrective actions are taken.
- » Establishing site emergency action procedures.
- » Providing welfare and rights to all employees working at the site including medical assistance.

ENVIRONMENTAL POLICY STATEMENT

BC recognizes the responsibilities placed on it by the relevant Environmental Legislation & Regulations on the nature, scale and environmental impact of its Activities, Products and Services.

The top management will take all reasonable steps to ensure that it complies with the legislation and other requirements including a commitment to continuous improvement and prevention of pollution.

The Top management recognizes that statutory obligations and regulations are accepted as minimum requirements only.

In order to meet its environmental objectives, BC will provide sufficient resources of time, personnel and finance. It is also the policy of the BC to provide information, training and supervision to its workforce in pursuance of these objectives and to ensure that its subcontractors provide similar resources and arrangements.

It is the duty of all personnel (including suppliers, subcontractors and visitors) to take all reasonable precautions to improve our environmental performance by preventing pollution, reducing waste, minimizing hazardous waste, and recycling waste as much as possible. Our legal and moral responsibility towards the environment dictates that we all must know and comply with the environmental regulations and try to minimize the impact of our operations on the environment.

In order that this policy can be complied with, the contents of the policy shall be made available to all BC employees, subcontractors and self-employed personnel and other interested parties.

» Sanctuary Falls 72 Villa Modification works - JGE

Client: Multi-Build Construction

» Frond D64 Villa Demolition works - Palm Jumeirah

Client: Build Corp Interiors

» Frond L100 Villa Modification works - Palm Jumeirah

Client : Build Corp Interiors

» Frond E-100 Villa Demolition & Concrete works - Palm Jumeirah

Client: Build Corp Interiors

» Frond L-61 Villa Modification works - Palm Jumeirah

Client: Build Corp Interiors

» GEMS Legacy School Repair works - Al Garhoud Dubai

Client: Infracare Facilities Management

» Frond C-69 Villa Modification works - Palm Jumeirah

Client: Build Corp Interiors

» Cluster 38-Villa No.10 Modification works - Jumeirah Islands

Client: Build Corp Interiors

» Cluster 43-Villa No.07 Modification works - Jumeirah Islands

Client: Build Corp Interiors

» Frond L-16 Villa Modification works - Palm Jumeirah

Client: Sofitel Hotels & Resorts

» Jasmine Leaf - Villa No. 03 Modification works - Barari Residences

Client: Build Corp Interiors

» Rosa G+1 Villa No.60 Modification works - Arabian Ranches II

Client: Spark Interior

» Frond M26 Villa Demolition & Civil works - Palm Jumeirah

Client: Build Corp Interiors

» Screed works at W Residence Mansion 05 - Palm Jumeirah, Dubai

Client: Build Corp Interiors

- » Shaik Juma villa (Civil & MEP)
- Consultant : Ridge consultant
Client : Shaik Juma Al Maktoum

- » Frond M60 Villa Modification works - Palm Jumeirah
- Client: Abdul Khaliq Abdulla Kodarzi
Consultant: Ridge Engineering Consultants

- » Seven Seas Logistics Warehouse Extension works - DIP
- Client : GII Real Estate Development L.L.C
Consultant: Al Shandagha Architects & Engineering Consultants

- » LTV-B25 Villa Modifications works - Jumeirah Golf Estates
- Client: West-One Interiors & Contracting

- » SF-90 Villa @ Jumeirah golf estate(Civil & MEP)
- Consultant: BDPL Gulf Architects Consultants
Client: Grant Edward Fairbairn, Sarah Ann Fairbarn

- » B+G+1+R @ Jumeirah bay(MV 21) (MEP)
- Main Contractor: Asad Aman Building contracting
Consultant : Model Engineering Consultants

- » Ladies Staff Accomodation (G+2+R)- Crown Prince Palace Fujairah
- Client: Crown Prince Palace
Consultant: Management International Consultants (MIC)

- » Proposed B+G+M+Roof Shops & Offices - Al Barsha 02 - Dubai
- Client: Jabir Abdulla Abdulghafar Alalawi Bani Hashim, Naba Majid Abdulqadir Nassif, Noaf Abdulla Abdulghafar Mohammad Alalawi, Noorah Abdulla Abdulghafar Alalawi Bani Hashim, Rashed Abdulla Abdulghafar Alalawi Bani Hashim
Consultant: HiCorner Consultancy
Main Contractor: West-One Interiors & Contracting

- » Sanctuary Falls 44 Villa Demolition & Extension - JGE
- Client: Build Corp Interiors

» Modification of Existing Villa at Al Wasl - MERAAS Plots Umm Amaara

Client: Ridge Engineering Consultants

» Desert Leaf 6 Villa No. 7 Modification - Barari Residences

Client: Build Corp Interiors

» Frond M-89 Villa Modification works -Palm Jumeirah

Client: Build Corp Interiors

» Frond C-59 Villa Modification works - Palm Jumeirah

Client: Build Corp Interiors

» Plot No. 6174418, Landscape and Façade Works at Nad Al Shiba 4th, Dubai

Client: Mr. Sayyar

» Chalets Construction - Bab Al Shams Desert Resort - Al Qudra

Client: ARCO Turnkey Solutions Contracting L.L.C

» Frond P-19 Villa Modification works - Palm Jumeirah

Client: Build Corp Interiors

» Frond F-34 Villa Modification works - Palm Jumeirah

Client: Build Corp Interiors

» Frond D- 95 Villa Modification works - Palm Jumeirah

Client: Build Corp Interiors

» Frond D- 95 Villa Modification works - Palm Jumeirah

Client: Build Corp Interiors

» Frond L- 112 Villa Modification works - Palm Jumeirah

Client: Bauhaus Project Managment

» Frond D- 114 Villa Modification works - Palm Jumeirah

Client: Build Corp Interiors

» Frond D- 114 Villa Modification works - Palm Jumeirah

Client: Build Corp Interiors

» Frond D- 64 Villa Modification works - Palm Jumeirah

Client: Build Corp Interiors

» Frond O-78 Villa Modification Works - Palm Jumeirah

Client: Creating Homes Interiors L.L.C

» Frond V-24 Villa Modification works - Palm Jumeirah

Client: Build Corp Interiors

» Frond D-98 Villa Modification works - Palm Jumeirah

Client: Build Corp Interiors

» Frond M-102 Villa Modification works - Palm Jumeirah

Client: Build Corp Interiors

» Frond B-70 Villa Modification Works - Palm Jumeirah

Client : Build Corp Interiors

» Frond F-52 Villa Modification works - Palm Jumeirah

Client: Build Corp Interiors

» Frond D-12 Villa Modification Works - Palm Jumeirah

Client: Creating Homes Interiors L.L.C

» Frond C-24 Villa Modification works - Palm Jumeirah

Client: Multi-Build Construction

» SF-91 Villa Modification works - Sanctuary Falls, Jumeirah Golf Estates

Client: Build Corp Interiors

» Modification of MBT Training Academy - JAFZA

Client: One RX Retail Experience Design

» Office No. 401, 402 & 403 Modification - Hasani Cor Building - Barsha

Client: GII Real Estate Development L.L.C

» Construction of B+G+1 Villa - MV-51 - Jumeirah Bay

Client: GII Real Estate Development L.L.C
Consultant: Model Engineering Consultants

Ongoing Projects



**LADIES STAFF ACCOMODATION - G+2+R
- CROWN PRINCE PALACE - FUJAIRAH**



**LADIES STAFF ACCOMODATION - G+2+R
- CROWN PRINCE PALACE - FUJAIRAH**



**LADIES STAFF ACCOMODATION - G+2+R
- CROWN PRINCE PALACE - FUJAIRAH**



**MBT TRAINING ACADEMY
MODIFICATION - JAFZA**



**MBT TRAINING ACADEMY
MODIFICATION - JAFZA**



**JASMINE LEAF -03 VILLA 05 - AL
BARARI RESIDENCES**

Ongoing Projects



**FROND M - 60 VILLA
PALM JUMEIRAH**



**FROND M - 60 VILLA
PALM JUMEIRAH**



**L-112 VILLA -
PALM JUMEIRAH**



**L-112 VILLA -
PALM JUMEIRAH**



**L-112 VILLA -
PALM JUMEIRAH**



**L-112 VILLA -
PALM JUMEIRAH**



**D-64 VILLA -
PALM JUMEIRAH**



**D-64 VILLA -
PALM JUMEIRAH**

Ongoing Projects



JASMINE LEAF VILLA 03 MODIFICATION WORKS - BARARI RESIDENCES



REDWOOD C-24 VILLA MODIFICATION - JUMEIRAH GOLF ESTATES



CONSTRUCTION OF CHALETS - BAB AL SHAMS DESERT RESORT - AL QUDRA



CONSTRUCTION OF CHALETS - BAB AL SHAMS DESERT RESORT - AL QUDRA



CONSTRUCTION OF CHALETS - BAB AL SHAMS DESERT RESORT - AL QUDRA



HASSANICOR COMMERCIAL BUILDING OFFICES MODIFICATION, AL BARSHA



HASSANICOR COMMERCIAL BUILDING OFFICES MODIFICATION, AL BARSHA



HASSANICOR COMMERCIAL BUILDING OFFICES MODIFICATION, AL BARSHA

Ongoing Projects



B+G+1+R VILLA MODIFICATION - AL WASL - UMM AMARAA, DUBAI



B+G+1+R VILLA MODIFICATION - AL WASL - UMM AMARAA, DUBAI



B+G+1+R VILLA MODIFICATION - AL WASL - UMM AMARAA, DUBAI



B+G+1+R VILLA MODIFICATION - AL WASL - UMM AMARAA, DUBAI



LADIES STAFF ACCOMODATION - G+2+R - CROWN PRINCE PALACE FUJAIRAH



LADIES STAFF ACCOMODATION - G+2+R - CROWN PRINCE PALACE - FUJAIRAH



LADIES STAFF ACCOMODATION - G+2+R - CROWN PRINCE PALACE FUJAIRAH



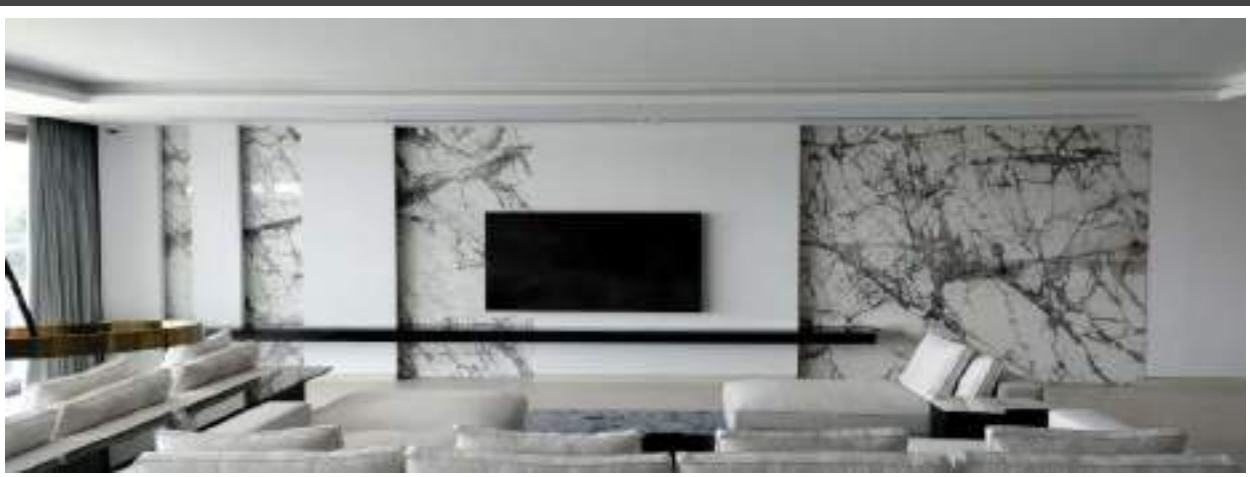
LADIES STAFF ACCOMODATION - G+2+R - CROWN PRINCE PALACE FUJAIRAH

- » Interior Fit Out works at Office No. M01, HB Homes Real Estate L.L.C, Dubai
- » Balcony Landscape work at Fox Hill Apartments - Motor City
- » Cambridge Internation School Bus Parking works
- » G+1 Villa Refurbishment works - Al Jafilia
- » Refurbishment of 6 Villas in Al Hail Island, Abudhabi
- » External painting works at Palm Jumeirah Frond N-Villa 78A
- » Slab construction & Slab cutting works at W-Residence Mansion 07-602, Palm Jumeirah
- » Margam EO Villa Falcon House & Kitchen extension works
- » Canal 91 Villa Modification works - Palm Jumeirah
- » W Residence Apartment 3-102 painting works
- » La Punto Ladies salon modification works - Reva Residences by DAMAC
- » Landscaping work for G+M group of 61 warehouse units + offices at DPC (IMPZ)
- » Transworld Warehouse extension Mobilization works - JAFZA
- » Refurbishment works of Office & Horse stable - Crown Prince Palace - Fujairah
- » Chinamex Warehouse Extension works - JAFZA
- » Store refurbishment works - Crown Prince Palace - Fujairah
- » Zabeel Palace offices Refurbishment works - Dubai
- » Backfilling works at Al Badia 06 Residences - Dubai Festival City
- » Internal and External finishing works for Car garage at Nad Al Shiba, Dubai, UAE
- » Various Civil works related to Ground Slab and Barrier shifting works at Al Qudra
- » Construction of Cricket Pitch at DPS School
- » 12 Units of A/C fixing works at Indu Logistics FZE, Logistics City, DIP
- » Office No. 1907 & 1908 B Fit-Out works - Business Central Tower - Dubai Internet City
- » D-42 Villa Modification works - Flame Tree Ridge - Jumeirah Golf Estates
- » SF-90 Villa Modifications works - Sanctuary Falls - Jumeirah Golf Estates
- » One & Only Palm Beach-Pool Resort - Palm Jumeirah
- » Nakhali Palace - Villa Refurbishment works - Al Awir, Dubai
- » Nakhali Palace - Construction of 38 Leisure camps - Al Awir, Dubai
- » Laguna Restrooms Refurbishment works - Sofitel Hotel Dubai
- » B-25 Villa Modification works - Lime Tree Valley, Palm Jumeirah

MEP Landmark Project



W RESIDENCE B BLOCK B+G+13+R



Completed Projects



**W - HOTEL - PALM JUMEIRAH
DUBAI**



**W - HOTEL - PALM JUMEIRAH
DUBAI**



**FALCON HOUSE - ENGINEERING OFFICE
MARGAM - DUBAI**



**ONE & ONLY - PALM BEACH-POOL
RESORT - PALM JUMEIRAH**



**GEMS WELLINGTON
INTERNATIONAL SCHOOL**



**ONE & ONLY - PALM BEACH-POOL
RESORT - PALM JUMEIRAH**



**CHINAMAX WAREHOUSE
JAFZA SOUTH**



CROWN PRINCE PALACE - FUJAIRAH

Completed Projects



**CROWN PRINCE PALACE -
FUJAIRAH**



**CROWN PRINCE PALACE -
FUJAIRAH**



**FTR - D 42 VILLA MODIFICATION -
JUMEIRAH GOLF ESTATES**



**FTR - D 42 VILLA MODIFICATION -
JUMEIRAH GOLF ESTATES**



**LA PUNTO LADIES SALON - REVA
RESIDENCES BY DAMAC**



**LA PUNTO LADIES SALON - REVA
RESIDENCES BY DAMAC**



**SF-90 VILLA - JUMEIRAH GOLF
ESTATES**



**SF-90 VILLA - JUMEIRAH GOLF
ESTATES**

Completed Projects



**SF-90 VILLA - JUMEIRAH
GOLF ESTATES**



**SF-90 VILLA - JUMEIRAH
GOLF ESTATES**



**SF-90 VILLA - JUMEIRAH GOLF
ESTATES**



**LAGUNA REST ROOMS -
SOFITEL HOTEL**



**LAGUNA REST ROOMS - SOFITEL
HOTEL**



**LAGUNA REST ROOMS - SOFITEL
HOTEL**



G+1+R VILLA - UMM SUQEIM



G+1+R VILLA - UMM SUQEIM

Completed Projects



**FROND M-89 VILLA
PALM JUMEIRAH, DUBAI**



**FROND M-89 VILLA
PALM JUMEIRAH, DUBAI**



**FROND M-89 VILLA
PALM JUMEIRAH, DUBAI**



**FROND M-89 VILLA
PALM JUMEIRAH, DUBAI**



**FROND M-89 VILLA
PALM JUMEIRAH, DUBAI**



**FROND M-89 VILLA
PALM JUMEIRAH, DUBAI**

Completed Projects

CONSTRUCTION OF 36 LEISURE CAMPS - NAKHALI PALACE - AL AWIR



Completed Projects

CONSTRUCTION OF 36 LEISURE CAMPS - NAKHALI PALACE - AL AWIR



تتراخيص بناء جديد

376874 - 2 - 1 - 2

01/07/2022 | التاريخ لتعيين المقاول : 01/07/2022 | التاريخ للإصدار :

اسم المالك : وزارة تنمية المجتمع - مراكز دبي ابداعية وأعمال اصحاب الهوى
رقم الأرض : 2260706 | اسم المنطقة الجديدة : الشارقة الأولى

نوع الرخصة : ترخيص هوائي أ - حطب عذيق
نوع العميل / عقد المالك : نوع العميل / عقد المالك
عدد الأباريق : 6

وصف العمل : صاحب وموظف مخازن وشكل مخازن التخزين
المستشاري : شركة الهندسة المعمارية والاسطوانات
رقم الرخصة : 565464

المقاول : (يتمتع بمزايا البناء (ش.م.م.)
رقم الرخصة : 565464

المقاول القانوني : رقم الرخصة :

قيمة الرسوم : 1,7778 | رقم كبريال : 20220033893 | التاريخ : 01/07/2022

التصاريح الخاصة : التاريخ : رقم :

الشروط عامة :

- التقيد بشروط التراخيص والاشتراطات المعمول بها والالتزام بالاشتراطات والالتزام بالاشتراطات المعمول بها.
- الالتزام بالاشتراطات المعمول بها والالتزام بالاشتراطات المعمول بها.
- حجب أو تأمين مخازن التخزين المتعلق بمخازن التخزين في أي وقت.
- بالاشتراطات المعمول بها (أو بموجب) العمل خلال مدة شهر من تاريخ الإصدار أو في حال توقف العمل أكثر من ستة أشهر متتالية.
- يحظر تشغيل المكين عند الانتهاء من تشييد المخازن قبل إصدار شهادة الإنجاز.
- الالتزام بالاشتراطات المعمول بها والالتزام بالاشتراطات المعمول بها.
- الالتزام بالاشتراطات المعمول بها والالتزام بالاشتراطات المعمول بها.

010322 | رقم الترخيص
2260706 | رقم الأرض
376874-2-1 | رقم المنطقة الجديدة

01/07/2022 | التاريخ
376874-2-1 | رقم المنطقة الجديدة

التراخيص الذاتي للتدوير

389423 - 1 - 1 - 1

16/09/2022 | التاريخ للطباعة : 16/09/2022 | التاريخ للإصدار :

اسم المالك : إعمار العقارية - المروج
رقم الأرض : 3450832 | اسم المنطقة : برج خليفة

الاسم التجاري : Enasar - Square Building 4 office 701
أصحاب التراخيص : GI ISLAMICREIT CREIT LTD

رقم الرخصة : 0566544519 | الهاتف :

مساحة الوحدة بالمتر المربع : 5426
وصف العمل : أعمال تدوير باطن

رقم العميل : Business Park 1 - 2
رقم المبنى : 4-7
رقم الوحدة : 2-1

الاشتراطات :
رقم الرخصة : 565464 | الهاتف : 042870272 | الفاكس : 042870272
المقاول القانوني :
رقم الرخصة : 1070 | رقم كبريال : 20220046585 | التاريخ : 16/09/2022

الاشتراطات :

- الالتزام بالاشتراطات المعمول بها.
- الالتزام بالاشتراطات المعمول بها والتي تناسب المشروع.
- إيقاف الأعمال المتعلق بالاشتراطات المعمول بها مع الالتزام بالاشتراطات المعمول بها في الموقع المرفوع العمل.
- بالاشتراطات المعمول بها (أو بموجب) العمل خلال مدة شهر من تاريخ الإصدار أو في حال توقف العمل أكثر من ستة أشهر.
- في حال وجود أي تعديلات على بعد مائة متر مربع من هذه الرخصة وماذا بعد مدة شهر.
- حجب وإيقاف قسم المبنى في حال حدوث أي عطل أو أضرار في الأبنية أو المبنى أو المبنى.
- في حال وجود أي تعديلات على المبنى في المبنى المتعلق بالمبنى التي تقل مساحتها عن 100 متر مربع.

مساحة 1 من 1

تراخيص

Department of Planning & Development
Perms, Customs & Free Zone Corporation
Government of Dubai

تتراخيص

وزارة التخطيط والتطوير
مؤسسة الامن والمطار والمنطقة الحرة
حكومة دبي

MODIFICATION PERMIT

REF NO: TKS/NOC-MP/4788/2022/14496 | Issue Date: 08-Sep-2022

Applicant Information

Client Name: Andrew Godfrey Edward Barber
Trakhees ID: P-0-192165 | Trade License No.:
Contractor Name: BOMBAY CONTRACTING L L C
Trakhees ID: C-0016-038492 | Trade License No.: 565464
Consultant Name: BDFL GULF-ARCHITECTS CONSULTANTS
Trakhees ID: C-0011-039092 | Trade License No.: 121520

Project Information

Business Unit: JUMERAH GOLF ESTATES | Location: JGE
Plot No.: JGE-FTR-A-0042 | Building No.: VILLA
Modified Area: 15 | Unit No.: 42

Work Description: Villa Modification on ground, first floor plans and elevation
Special Comments: Refer to approved drawings and special comments (if any) in attached sheets for further details.

General Conditions

- The NOC should be printed and posted on the site prepared for the reference of Trakhees, Inspection Engineers.
- All approved modification works shall be isolated from General Public and Operation Areas & executed within the premises only.
- Multi-Phase Permit and Approved Drawings shall be available on site during the modification activities.
- The Contractor/Consultant and his agents shall remain entirely responsible for all errors in the design and execution of the project.
- No storage or utilization of adjacent unit or area is permitted unless clearance obtained from concerned parties.
- Environment, Health and Safety (EHS) aspects are to be met during the modification works as per Trakhees Guidelines & Regulations.
- Consultant/Contractor shall inform Trakhees (DDB and EHS) of any accidents or incidents that occurs during modification works period.
- SDC requirements, if applicable shall be complied as per submitted undertaking letter. Trakhees Construction Safety Inspectors will verify the SDC compliance any time during the course of modification works.
- Revocation of Permit is required if modification works are not completed within six (6) months from the date of issuance of Modification permit.
- Operation/Occupation of the modified area is not permitted unless Modification Completion Certificate (MCC) is received from Trakhees.
- Refundable Deposit shall be collected after issuance of Modification Completion Certificate or else it will be forfeited. Trakhees has the right to forfeit the refundable deposit if the appointed contractor fails to maintain the cleanliness of the site and surroundings or any unpaid payment (Taxes and/or Fees) owing to the group/entity mentioned in the Department records without referring back to who issued the project deposit.

Approved By: Dr. Dalaf Yousuf Albikhi
Senior Manager Accreditation and Compliance

تتراخيص

Department of Planning & Development
Perms, Customs & Free Zone Corporation
Government of Dubai

تراخيص

وزارة التخطيط والتطوير
مؤسسة الامن والمطار والمنطقة الحرة
حكومة دبي

Modification Completion Certificate

MCC Ref.: TKS/NOC-MC/45330/2022/10373
Leasee: Lotus Investments FZE
Location: JAFZ - South 511001-
Work Description: Relocation of Fence and Relevel of Interlock to increase Dock Height
Building Usage: INDUSTRIAL
Modification NOC Ref.: TKS/NOC-MP/43576/2022/13221 issued on 15-Feb-2022
Consultant: AL SHANDAGHA ARCHITECTS AND ENGINEERING CONSULTANTS
Contractor: BOMBAY CONTRACTING L L C
Date of Inspection: 19-May-2022

Notes:

- The above mentioned project been completed as per Trakhees Building Regulations and Design Guidelines.
- Trakhees has no objection in Electrical & Water Authority (DEWA) providing service connections to the above location.
- The lessee shall undertake to maintain the premises regularly both internally and externally within plot limits.
- No modifications, additions and change of Premises usage shall be carried out without the written approval of Trakhees.
- Trakhees assumed no responsibility or liabilities what-so-ever with regard to safety of personnel or property of the lessee by the issuance of this Certificate and attention is drawn to all Trakhees regulations regarding ongoing responsibilities.
- The lessee shall comply to comments issued with approval by Trakhees Environment, Health and Safety Division.
- Trakhees Civil Engineering Division has No Objection in Trakhees Finance refunding the Security Deposit.
- This Completion Certificate is issued upon the completion of the above project in accordance to Trakhees procedures, without liability or responsibility whatsoever on Trakhees towards rights of the third parties.

Date: 20-May-2022

Dr. Dalaf Yousuf Albikhi
Senior Manager Accreditation and Compliance

PERMITS & APPROVALS

PERMITS & APPROVALS

Department of Planning & Development
Perit, Customs & Free Zone Corporation
Government of Dubai

تراخيص Trakhees
الهيئة الهندسية والهندسة والبناء
مؤسسة الامن والمخاطر والمنطقة الحرة
مؤسسة الامن والمخاطر والمنطقة الحرة

Building Permit - Amendment & Revitalization

Ref: TK5/CEEDS: 102571/JGE SF-A-R090/2022
Issue Date: 22-Sep-2022 Expiry Date: 21-Mar-2023

Applicant Information

Trakhees ID: P-D-152473
Client Name: Grant Edward Fairbairn, Sarah Ann Fairbairn
Trakhees ID: C-0015-035092
Consultant Name: BDPL GULF ARCHITECTS CONSULTANTS
Trakhees ID: C-0016-038492
Contractor Name: BOMBAY CONTRACTING L.L.C

Project Information

Location: Jumeirah Golf Estate DM Community Name: ME AISEM FIRST - SBS
Project ID: P11760 Permit ID:
Plot No.: JGE SF-A-R090 Plot Area (m²): 1047.36
Built up Area (m²): 654.93
Project Description: Residential Villa (B+G+1)
Subject: Building Permit Amendment and revitalization due to Change Names of Owner from Shakin Holdings to Grant Edward Fairbairn, Sarah Ann Fairbairn, Consultant from ultra-architectural consultancy to BDPL GULF ARCHITECTS CONSULTANTS and Contractor from CHINA STATE CONSTRUCTION ENGINEERING CORPORATION/MIDDLE EAST L.L.C to BOMBAY CONTRACTING L.L.C.

Original Permit Ref: TK5/CEEDS-18283/JGE SF-A-R090/2016
Issue Date: 31-Aug-2016 Expiry Date: N/A
Revitalization Count: 1

Particular Conditions

Structure:

1. The consultant shall apply and obtain CED mobilization NOC under the new contractor name by submitting the proper documents in compliance with the intended site arrangement prior any construction on site.

P.O. Box 2005, Dubai, United Arab Emirates
Tel: +971 4 3048888 Fax: +971 4 3022888
BKA Str. www.trakhees.ae

مركز دبي للإدارة الهندسية
مكتب: +971 4 3022888 فاكس: +971 4 3022888
الرقم الإلكتروني: www.trakhees.ae

وزارة دبي للتراخيص والبناء
Dubai BPS

موافقة استشاري المشروع Consultant Approval

Project Details

Permit No.: 376874-2-1
Parcel No.: 2260706
Consultant Name: National Engineering Bureau (NEB)
Contractor Name: Bombay Contracting LLC

Request Details

Submission Type: New Renew
Inspection Type: Step 2: Structural Inspection Step 3: Completion & services connection
Building Serial No.: Public Building - 1

Part to be Inspected: Final Completion inspection for the play area and the bus parking under the permit No. 376874-2-1

Consultant Undertaking & Approval

I hereby undertake and assure that all above mentioned works have been checked by me and found compliant to building permit and approved drawings, and have been executed as per Engineering and Technical specifications. I agree that this letter of undertaking will be considered as my approval for submission of inspection request by Contractor.

توقيع وتوقيع الاستشاري Consultant signature & Stamp	اسم مهندس استشاري Consultant Engineer Name	تاريخ كشف الاستشاري Consultant Inspection Date
	Mohammed Helal	28.09.2022

التصنيف: Open Site, Shared - Confidential Shared - Available, Shared - Secret

BDPL GULF ARCHITECTS & CONSULTANTS

DATE: 10/09/2022

To: Mrs Perit, Customs and Free Zone Corporation
Government Dubai
P.O.Box 17090
Dubai, U.A.E.

Attention: EHS-CED Department
Subject: Contractor Appointment Letter
Project: Modification Work In G+1 Villa Plot No 42 Flame Tree Ridge, Jumeirah Golf Estate, Dubai U.A.E.

Dear Sir,

We are pleased to inform you that we have appointed Contractor **Mix Bombay Contracting L.L.C. P.O.Box 60511, Dubai U.A.E.**, for the above mentioned project. They are authorized, construction and completion of the above mentioned project.

Your assistance and cooperation to them will be highly appreciated.

Thanks & Best Regards

BDPL Gulf Architects & Consultants,

P.O. Box : 121257, DUBAI, U.A.E.
T : +971 4 354 8844, F : +971 4 354 8844
E : arch@bdpl-gulf.ae, W : www.bdpl-gulf.com

ENGINEERING OFFICE

TAKING OVER CERTIFICATE (TOC)

Statement of Taking Over

In accordance with the Contract, we hereby certify that the better Project was substantially completed in accordance with the scope of works and to the satisfaction of the Employer and the Consultant and in accordance with the intention of Taking Over under the Contract on the date stated below.

This Taking-Over Certificate does not release the Contractor from any of the specified or continuing warranties, obligations or liabilities under or in connection with the Contract or at law, including the remedying of all defects during the Defects Liability Period (DLP) as attached herewith.

PROJECT INFORMATION:

Originator/Department: F&C Area 1, JME - Royal TOC Ref: 202005270
Purchase Order: 300008911 TOC Type: Final
Contractor: M/EN/ BOMBAY CONTRACTING LLC
Contract Ref: F&C/ARC/COR/S28/1002
Project Location: Jm Supra 1
Project No: R-000021000
Project Name: Rehabilitation Works in Existing Villa No 4 at Jm Supra 1
Scope of Work: Rehabilitation of Villa Supra 1

Commencement Date: 1 Jun 3, 2022
Completion Date: 1 Jun 25, 2022
Actual Completion (Taking-Over) Date: 1 Jun 25, 2022
Delay of Completion (by Contractor) in No. of Days: N/A
Defects Liability Period Commencement Date: 1 Jun 25, 2022
Defects Liability Period (days): 180 (1 Jun 25, 2023)
Warranty Certificate: Received
As-Built Drawings: Received
Operation & Maintenance Manuals: Not Applicable
Testing & Commissioning Reports: Not Applicable
Others: Not Applicable

Remarks: Since the scope was completed by per allocated access to need to replace panels.

CERTIFIED BY:		REVIEWED BY:		APPROVED BY:	
Name:	Arun Kumar Boobath Limakarathu	Name:	Arun Kumar Boobath Limakarathu	Name:	Adal Amin Abdullah Al Methwani
Signature:		Signature:		Signature:	
Date:	04/08/2022	Date:	04/08/2022	Date:	4/8

Certificate of Registration



This is to certify that the Quality Management System of

BOMBAY CONTRACTING (L L C)

Saeed Suhail Saeed Building - Office No. 101 - Ras Al Khor Industrial 02, Dubai,
United Arab Emirates, P.O. Box - 60511

is in accordance with the requirements of the following standard

ISO 9001:2015 (Quality Management System)

SCOPE

Providing Air-Conditioning, Ventilations and Air Filtration Systems Installation & Maintenance, Building Contracting, Plumbing and Sanitary Installation, Steel Constructions Contracting, Electromechanical Equipment Installation and Maintenance, Concrete Restoration, Wrecking and Demolition Works and Electrical Fitting Contracting

Certificate Number : 090124019796

(IAF Code: 28)

Initial Registration Date : 09-JAN-2024

1st Surveillance Date : 09-DEC-2024

2nd Surveillance Date : 09-DEC-2025

Certificate Expiry Date : 08-JAN-2027


To verify certificate, visit at :

www.arscert.com

www.uafaccreditation.org

www.iafcertsearch.org

Issued by ARS Assessment Private Limited


Managing Director



UAF Address : 400, North Center Dr, STE-202, Norfolk, VA 23502, United States of America

This certificate remains the property of ARS and must be returned to ARS on Cancellation or Suspension of the certificate. Validity of the certificate is subject to successful completion of surveillance audits. Further clarification regarding the scope of this certificate and the applicability of standard may be obtained by consulting the Organization on info@arscert.com

ISO 9001:2015 CERTIFICATE

Certificate of Registration



This is to certify that the Environmental Management System of

BOMBAY CONTRACTING (L L C)

Saeed Suhail Saeed Building - Office No. 101 - Ras Al Khor Industrial 02, Dubai,
United Arab Emirates, P.O. Box - 60511

is in accordance with the requirements of the following standard

ISO 14001:2015 (Environmental Management System)

SCOPE

Providing Air-Conditioning, Ventilations and Air Filtration Systems Installation & Maintenance, Building Contracting, Plumbing and Sanitary Installation, Steel Constructions Contracting, Electromechanical Equipment Installation and Maintenance, Concrete Restoration, Wrecking and Demolition Works and Electrical Fitting Contracting

Certificate Number : 090124029707

(IAF Code: 28)

Initial Registration Date : 09-JAN-2024

1st Surveillance Date : 09-DEC-2024

2nd Surveillance Date : 09-DEC-2025

Certificate Expiry Date : 08-JAN-2027

To verify certificate, visit at :

www.arscert.com

www.uafaccreditation.org

www.iafcertsearch.org

Issued by ARS Assessment Private Limited

Abhishek
Managing Director



UAF Address : 400, North Center Dr, STE 202, Norfolk, VA 23502, United States of America

This certificate remains the property of ARS and must be returned to ARS on Cancellation or Suspension of the certificate. Validity of the certificate is subject to successful completion of surveillance audits. Further clarification regarding the scope of this certificate and the applicability of standard may be obtained by consulting the Organization on info@arscert.com

ISO 14001:2015 CERTIFICATE

Certificate of Registration



This is to certify that the Occupational Health and Safety Management System of

BOMBAY CONTRACTING (L L C)

Saeed Suhail Saeed Building - Office No. 101 - Ras Al Khor Industrial 02, Dubai,
United Arab Emirates, P.O. Box - 60511

is in accordance with the requirements of the following standard

ISO 45001:2018

(Occupational Health and Safety Management System)

SCOPE

Providing Air-Conditioning, Ventilations and Air Filtration Systems Installation & Maintenance, Building Contracting, Plumbing and Sanitary Installation, Steel Constructions Contracting, Electromechanical Equipment Installation and Maintenance, Concrete Restoration, Wrecking and Demolition Works and Electrical Fitting Contracting

Certificate Number : 090124039708

(IAF Code: 28)

Initial Registration Date : 09-JAN-2024

1st Surveillance Date : 09-DEC-2024

2nd Surveillance Date : 09-DEC-2025

Certificate Expiry Date : 08-JAN-2027


To verify certificate, visit at :

www.arscert.com

www.uafaccreditation.org

www.iafcertsearch.org

Issued by ARS Assessment Private Limited


Managing Director



CB-MS-2019



UAF Address : 400, North Center Dr, STE 202, Norfolk, VA 23502, United States of America

This certificate remains the property of ARS and must be returned to ARS on Cancellation or Suspension of the certificate. Validity of this certificate is subject to successful completion of surveillance audits. Further clarification regarding the scope of this certificate and the applicability of standard may be obtained by consulting the Organization on info@arscert.com

ISO 45001:2018 CERTIFICATE



TRAINING CERTIFICATES

B SAFE SAFETY & SECURITY CONSULTANCY

B SAFE SAFETY & SECURITY CONSULTANCY
INSPECTION, TRAINING, COMPLIANCE

CERTIFICATE



NAME: MR. SUJAN KUMAR
 NATIONALITY: INDIA
 DATE OF BIRTH: 15/04/1982
 COMPANY NAME: BSAFE CONSULTANCY

HAS SUCCESSFULLY COMPLETED SAFETY TRAINING COURSE FOR FLAMMABLE

ISSUED BY: T. S. RAJ KUMAR
 APPROVED BY: T. S. RAJ KUMAR




B SAFE SAFETY & SECURITY CONSULTANCY

B SAFE SAFETY & SECURITY CONSULTANCY
INSPECTION, TRAINING, COMPLIANCE

CERTIFICATE



NAME: MR. PRAVEEN PRADEEP
 NATIONALITY: INDIA
 DATE OF BIRTH: 15/04/1982
 COMPANY NAME: BSAFE CONSULTANCY

HAS SUCCESSFULLY COMPLETED SAFETY TRAINING COURSE FOR FLAMMABLE

ISSUED BY: T. S. RAJ KUMAR
 APPROVED BY: T. S. RAJ KUMAR




B SAFE SAFETY & SECURITY CONSULTANCY

B SAFE SAFETY & SECURITY CONSULTANCY
INSPECTION, TRAINING, COMPLIANCE

CERTIFICATE



NAME: MR. PRAVEEN PRADEEP
 NATIONALITY: INDIA
 DATE OF BIRTH: 15/04/1982
 COMPANY NAME: BSAFE CONSULTANCY

HAS SUCCESSFULLY COMPLETED SAFETY TRAINING COURSE FOR FLAMMABLE

ISSUED BY: T. S. RAJ KUMAR
 APPROVED BY: T. S. RAJ KUMAR




B SAFE SAFETY & SECURITY CONSULTANCY

B SAFE SAFETY & SECURITY CONSULTANCY
INSPECTION, TRAINING, COMPLIANCE

CERTIFICATE



NAME: MR. PRAVEEN PRADEEP
 NATIONALITY: INDIA
 DATE OF BIRTH: 15/04/1982
 COMPANY NAME: BSAFE CONSULTANCY

HAS SUCCESSFULLY COMPLETED SAFETY TRAINING COURSE FOR HAZARDOUS WASTE HANDLING

ISSUED BY: T. S. RAJ KUMAR
 APPROVED BY: T. S. RAJ KUMAR




Quality International
CERTIFICATION CONSULTANTS

Certificate
This is to certify that

MR. MOHAMMAD TOFIK
has successfully met all the requirements & completed safety awareness training course on

FLAMMABLE
Certified by
QUALITY INTERNATIONAL C.S.I.I.E.
1105/1106/1107/1108/1109

ISSUED BY: T. S. RAJ KUMAR





B SAFE SAFETY & SECURITY CONSULTANCY

B SAFE SAFETY & SECURITY CONSULTANCY
INSPECTION, TRAINING, COMPLIANCE

CERTIFICATE



NAME: MR. PRAVEEN PRADEEP
 NATIONALITY: INDIA
 DATE OF BIRTH: 15/04/1982
 COMPANY NAME: BSAFE CONSULTANCY

HAS SUCCESSFULLY COMPLETED SAFETY TRAINING COURSE FOR HAZARDOUS WASTE HANDLING

ISSUED BY: T. S. RAJ KUMAR
 APPROVED BY: T. S. RAJ KUMAR




Quality International
CERTIFICATION CONSULTANTS

Certificate
This is to certify that

MR. SIVAKUMAR MOHYANATH
has successfully met all the requirements & completed safety awareness training course on

SCAFFOLDING
Certified by
QUALITY INTERNATIONAL C.S.I.I.E.
1105/1106/1107/1108/1109

ISSUED BY: T. S. RAJ KUMAR





Quality International
CERTIFICATION CONSULTANTS

Certificate
This is to certify that

MR. SIVAKUMAR MOHYANATH
has successfully met all the requirements & completed safety awareness training course on

SCAFFOLDING
Certified by
QUALITY INTERNATIONAL C.S.I.I.E.
1105/1106/1107/1108/1109

ISSUED BY: T. S. RAJ KUMAR





Quality International
CERTIFICATION CONSULTANTS

Certificate
This is to certify that

MR. SIVAKUMAR MOHYANATH
has successfully met all the requirements & completed safety awareness training course on

SCAFFOLDING
Certified by
QUALITY INTERNATIONAL C.S.I.I.E.
1105/1106/1107/1108/1109

ISSUED BY: T. S. RAJ KUMAR





TRAINING CERTIFICATES



TRAINING CERTIFICATES



Yahya Husain



COMPANY NAME
BOMBAY CONTRACTING L L C

DESIGNATION
Civil Engineer

COURSE NAME
Construction Materials Quality Control and Structural Insp...

EXPIRY DATE
10/11/2023



Gagandeep Singh

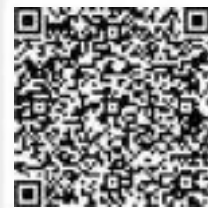


COMPANY NAME
BOMBAY CONTRACTING L L C

DESIGNATION
Safety Supervisor

COURSE NAME
Safety Supervisor Registration Scheme

EXPIRY DATE
16/11/2024



Harish Murali



COMPANY NAME
BOMBAY CONTRACTING L L C

DESIGNATION
Civil Engineer

COURSE NAME
Fresh Concrete Testing in The Field

EXPIRY DATE
25/11/23



Ezhilvanan
Aathimulam



COMPANY NAME
BOMBAY CONTRACTING L L C

DESIGNATION
Mechanical Engineer

COURSE NAME
Building Regulations & Design Guidelines - MEP

EXPIRY DATE
08/11/2023



Practice Permit
Details



permit-
details

Practice Permit No:	154125	Company Name:	BOMBAY CONTRACTING (L L C)
Permit Status:	Active	Trade License Issue Date:	13-02-2005
Practice Permit Expiry Date:	12-02-2024		

Activities:

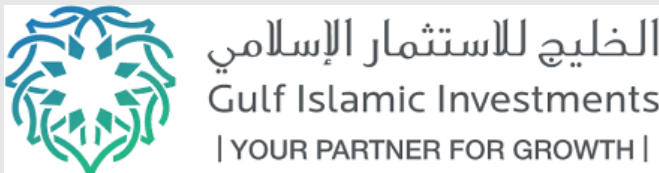
- > - Electrical Fitting Contracting - Concrete Restoration - Wrecking And Demolition Works G+1 - Steel Constructions Contracting G+1 - Building Contracting G+4

Accredited Engineers:

Name	Engineer No	Activities	Qualifying Expiry Date
NIDHIN MOHAN MOHAN KAMALA VILASOM SUKUMARAN	113080	- Electrical Fitting Contracting	07-12-2024
GAGANDEEP SINGH SUKHDEV SINGH	77902	- Building Contracting G+1	12-12-2023
YAHYA HUSAIN KABEER HUSAIN MINANNA	309118296	- Building Contracting G+1 - Wrecking And Demolition Works G+1 - Building Contracting G+4 - Concrete Restoration	02-01-2024
SUSMITA SURESH KAKKANATTU SURESH KUMAR VASU	309122832	- Steel Constructions Contracting G+1	07-12-2024

DM
PRACTICE PERMIT

OUR CLIENTS



ENGINEER'S OFFICE





P.O.Box 60527, Ras Al Khor, Dubai, UAE

Tel.: +971 4 287 0272

info@bombaycontracting.com

www.bombaycontracting.com



PRE-QUALIFICATION

For
Structural Steel Works
Tensile Shade Works
Architectural Metal Works
Aluminium And Cladding Works
Stainless Steel Works



TABLE OF CONTENTS

- 1. FOREWORD**
- 2. COMPANY PROFILE**
- 3. DIVISION PROFILE**
- 4. GENERAL STANDARDS**
- 5. QUALITY DOCUMENTS**
 - a. QUALITY POLICY
 - b. ISO CERTIFICATE
 - c. QUALITY MANUAL
 - d. SAFETY MANUAL
- 6. OFFICIAL DOCUMENTS**
 - a. COMMERCIAL REGISTRATION
 - b. CHAMBER OF COMMERCE
 - c. INDUSTRIAL LICENSE
 - d. VAT REGISTRATION
- 7. CONSULTANT/CLIENT APPROVALS**
- 8. TEST CERTIFICATES**
- 9. LIST OF MACHINERIES**
- 10. PROJECT PICTURES & DETAILS**
- 11. LIST OF PROJECTS**
- 12. CONTACT US**

1. FOREWORD





Foreword

To:

CLIENT

Dear Sir,

We have the pleasure in introducing **Al Ruaya Al Mutakamilah Metal Const. Ind. LLC** to you as a Contracting Company with different Divisions engaged in Design, Supply, Fabrication, and Installation of Structural Steel, Architectural Steel, and Tensile Fabric Shade Works.

We wish to emphasize here that our capability to provide cost effective engineering solutions to the needs of our client while maintaining the required quality and specifications is our speciality

ARM Metal Cons. is interested in doing business with your company and assuring you always, of our best attention and support.

We are providing herewith comprehensive information about ARM Metal Construction Industries LLC (Pre-Qualification) for your easy reference.

Should you need any further information or documentation, please contact the undersigned without hesitation.

Thank you & Regards,

Mr. SHABEER AHAMED

Managing Director

M/s. Al Ruaya Al Mutakmilah Metal Const.Ind.LLC

2. COMPANY PROFILE





Company Profile

INTRODUCTION

We have pleasure in introducing **ARM Metal Construction Ind. LLC** to you, in the hope that we will have mutually beneficial business opportunities. ARM Metal is a contracting firm with different engaged in Design, Engineering, Manufacture, Supply and Installation of

- Structural and Architectural Steel Works
- Stainless Works
- Architectural Aluminium, Cladding, & Curtain Walling

The company was created with a **MISSION** of an unwavering commitment to excellence, an anthem of innovation that resonates across every beam, every bolt and every stitch of tensile fabric. We are relentless collaborators, forging partnership with the pioneers of invention to harness the forces of creativity and engineering in unison. Our aspiration is singular; to be conduits of the extraordinary, to transform the ordinary into the legendary, and to be the architects of dreams that defy gravity ad leave on indelible mark on the world.

Our **VISSION** is nothing short of awe-inspiring. We are not merely a company; we are the visionary artisans of architectural metamorphosis. With unbridled ambition, we stand as the alchemist of the urban landscape, poised to transmute ordinary skylines into soaring symphonies of steel and glass, and to redefine mundane spaces as realms of extraordinary allure. Through our mastery of structural steel, the finesse of architectural metal, and the innovation of tensile fabric works, we unfurl canvas of the possible into a tapestry of the unimaginable.

At ARM Metal Construction Industries LLC, we envision more than change; we envision an architectural revolution. We are the architects of tomorrow, the dreamers of destiny and the architects of daring. Our Vision is to sculpt urban horizons into breathtaking sculptures of innovation and ingenuity, elevating the ordinary to extraordinary. We are not just builders; we are sculptors of dreams and our mission is to etch an indelible mark upon the world, where every structure we craft becomes a beacon of inspiration and a testament to the boundaries and possibilities of human creativity.

Our Sales target is constantly increasing. With the expansion program we have embarked on, adding new machinery & equipment, opening new factories and increasing our work force, we intend to enhance our production capacity.

The company is managed by a team of qualified and experienced professionals in the industry whose prime motto is customer satisfaction and it is the cornerstone of our sustained growth.

We are very keen about developing our partnership for our mutual benefit.



Company Profile

ABOUT US

ARM Metal Construction Industries LLC Our core services include Structural Design, Fabrication and Erection of complex steel structures and Architectural metal works for a diverse range of sectors including Commercial buildings, Residential buildings, Malls, Schools, Stadiums, Airports, Metros, District Cooling towers and other related sector.

ARM Metal Construction Industries LLC was founded with the objective of providing tangible solutions to the markets' increasing needs for structural and architectural metal requirement in a cost-effective manner with regard to price and delivery, while adhering to quality & specifications. From inception, **ARM Metal Construction Industries LLC** has acquired widespread recognition of its capabilities to deliver time bound solutions to the satisfaction of its clientele.

Our capabilities in perceiving ideas and transforming them into reality through creative design, precise engineering, accurate production, stringent quality control and planned installation are factors that contribute towards our success.

Our design, engineering, production, quality control and installation departments are manned by personnel with relevant background. Under the supervision of professional engineers, their craftsmanship & dedication ensure that top quality products are delivered to customers.

Our team of experts possesses extensive knowledge and experience in the construction industry, allowing us to deliver exceptional services that meet and exceed industry standards

The company is managed by a team of qualified and experienced professionals in the industry whose prime motto is customer satisfaction and it is the cornerstone of our sustained growth.

ARM METAL Construction Industries LLC looks forward to the opportunity of being your partner for the metal works of your forthcoming projects.

Our Key Vision to our client to provide

- Competitive pricing
- Professional service without shortcuts
- Full-service offerings, including design, fabrication, and erection
- Good industry experience
- Excellent references from satisfied clients
- Trust from leading contractors, consultants, and developers
- Friendly and accessible customer service



Company Profile

RANGE OF PRODUCTS

ENGINEERING SERVICES

- Structural Design
- Third party design approval.
- 3D Modelling, Detailing
- Shop Drawing, Fabrication Drawing and As Built Drawing

STRUCTURAL STEEL

- Hot Rolled Steel Structure
 - ✓ Warehouse, Villas, industrial structure, substation, platform and canopy etc
 - ✓ Balustrades, Handrails, protection Guardrails, Staircase, Fencing & Gratings
- PEB Steel Structure (Pre-Engineered)
 - ✓ Customized internal decorative secondary structure like Staircase, pipe support etc.

ARCHITECTURAL METAL PRODUCTS

- Balustrades, Handrails, cladding, Roof, floor and wall access hatch.
- Fire rated Door, cabinet, tables, pergola, louvers Etc.

MISCELLANEOUS IN MILD STEEL, STAINLESS STEEL AND ALUMINIUM.

- Stairs
- Handrails
- Ladders
- Curb Angles and Chequered plate
- Starting
- OTS platform
- Canopies
- Custom Gates (manual and Automatic)



Company Profile

COMPANY DATA

Name of the Company : AL RUAYA AL MUTAKAMILAH METAL CONSTRUCTION INDUSTRIES L.L.C.

Address : Old Sajja - Al Sajaan Industrial – Sharjah

Tel.: +971 6 521 4212

Website: www.armmetaluae.com

E-mail: info@armmetaluae.com

Type of Company : Limited Liability Company

Commercial Reg. No : 214442 Expiry Date : 30/08/2024

Chamber of Commerce : 241956 Expiry Date : 30/08/2024

Industrial License No : 815266 Expiry Date : 30/08/2024

Name of Owner : Mr. Shabeer Ahamed Ibrahim Shafiulla Basha Ibrahim Shafiulla Basha

Mr. Mohammed Bilal Samsudeen Samsudeen

Mr. Gagandeep Singh Sukhdev Singh

Mr. Yahya Husain Kabeer Husain Minanna

Bankers : ABU DHABI COMMERCIAL BANK

Nature of Business : Design, Engineering, Production, Supply & Installation of Structural & Architectural Metal, Aluminium Steel.

Contact Person : Mr. Shabeer Ahamed Ibrahim Shafiulla Basha Ibrahim Shafiulla Basha

Email : shabeer@bombaycontracting.com

Tel : +971 52 106 1978 / +971 50 569 8908

Sales Department : info@armmetaluae.com Tel.: +971 50 569 9346

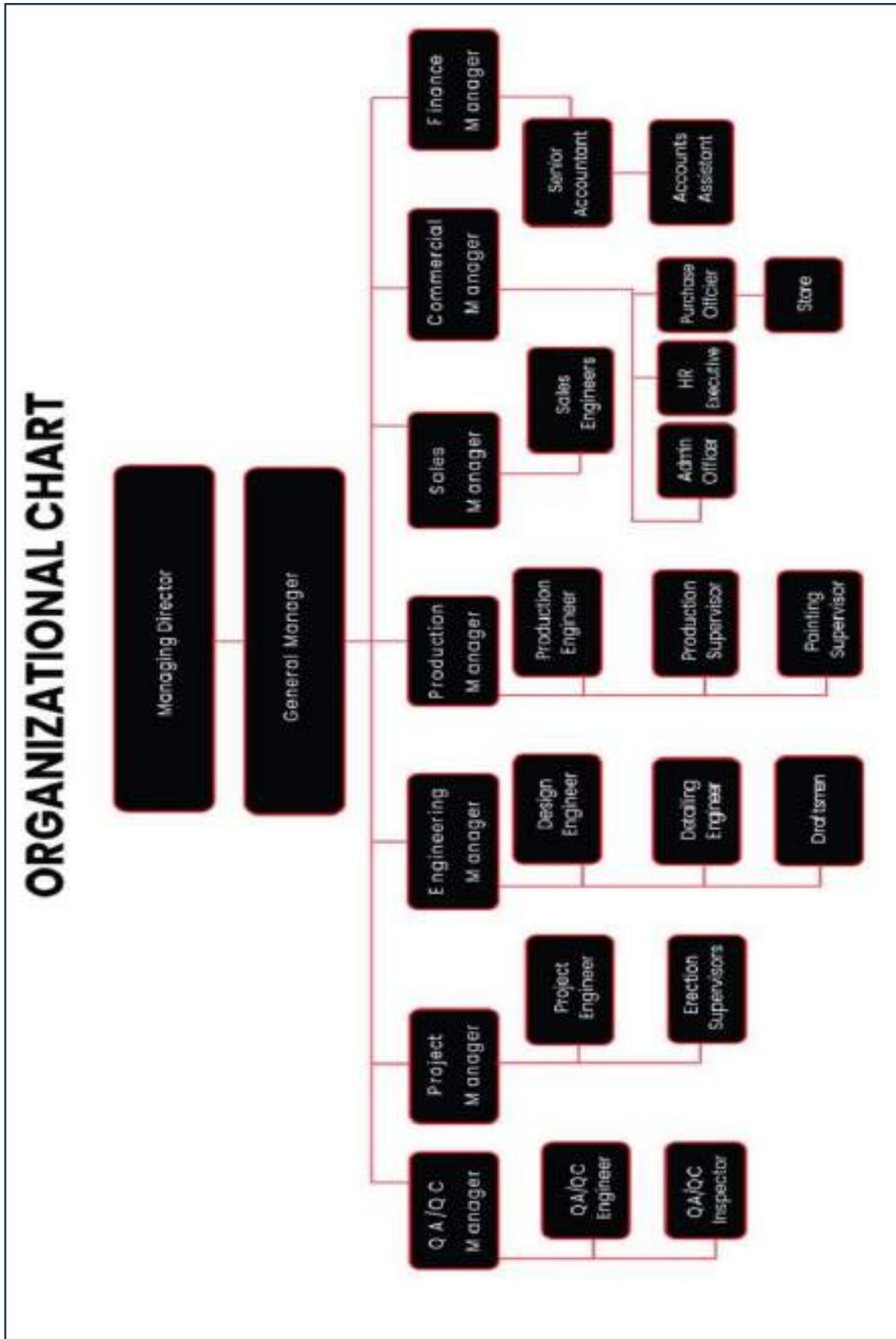
estimation@armmetaluae.com Tel.: +971 50 569 8814

operations@armmetaluae.com Tel.: +971 52 780 9912



Company Profile

ORGANIZATIONAL CHART





Al Ruaya Al Mutakmilah Metal Const.Ind.LLC
Structural Steel, Tensile Shade, Architectural Metal, Aluminium & Cladding, Stainless Steel

Document: ARM-PQ-01

Section: 02

PQD Date: 01/06/2024

Page: 6

Company Profile

MANPOWER DETAILS

S.NO	ITEM DESCRIPTION	QTY
1	ENGINEERS	15
2	SUPERVISORS	4
3	LEADMEN	4
4	SKILLED LABOR	20
5	NON - SKILLED LABOR	16
6	QUALITY CONTROL	1
7	ADMINISTRATION / SUPPORT STAFF	1
8	FINANCE	1
9	SALES	1
	Total	63



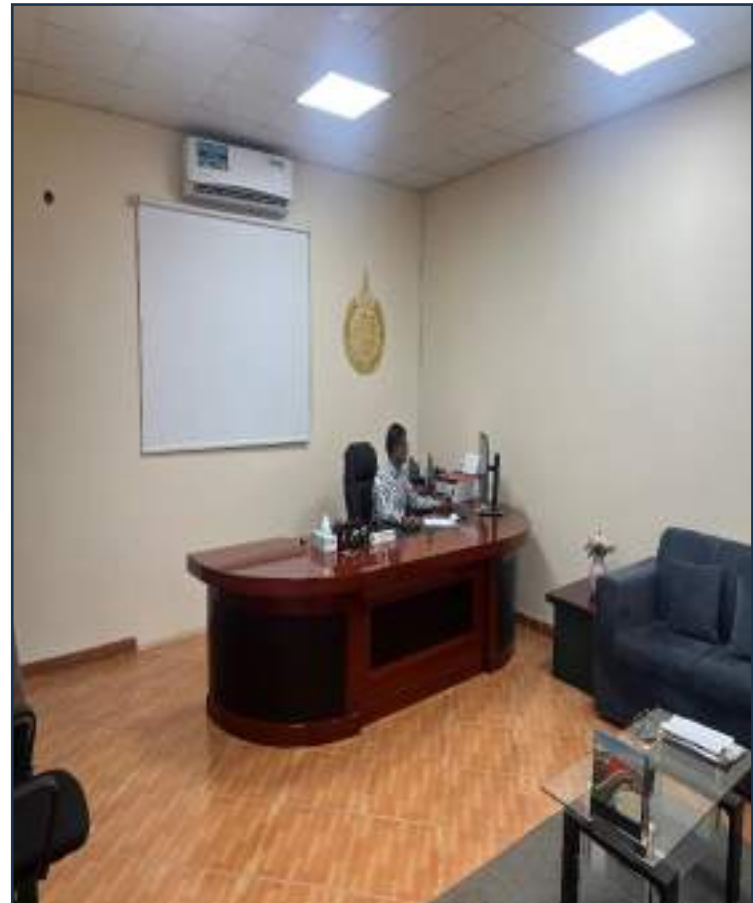
Company Profile

FACTORY FACILITY





Company Profile





Company Profile





Company Profile





Company Profile



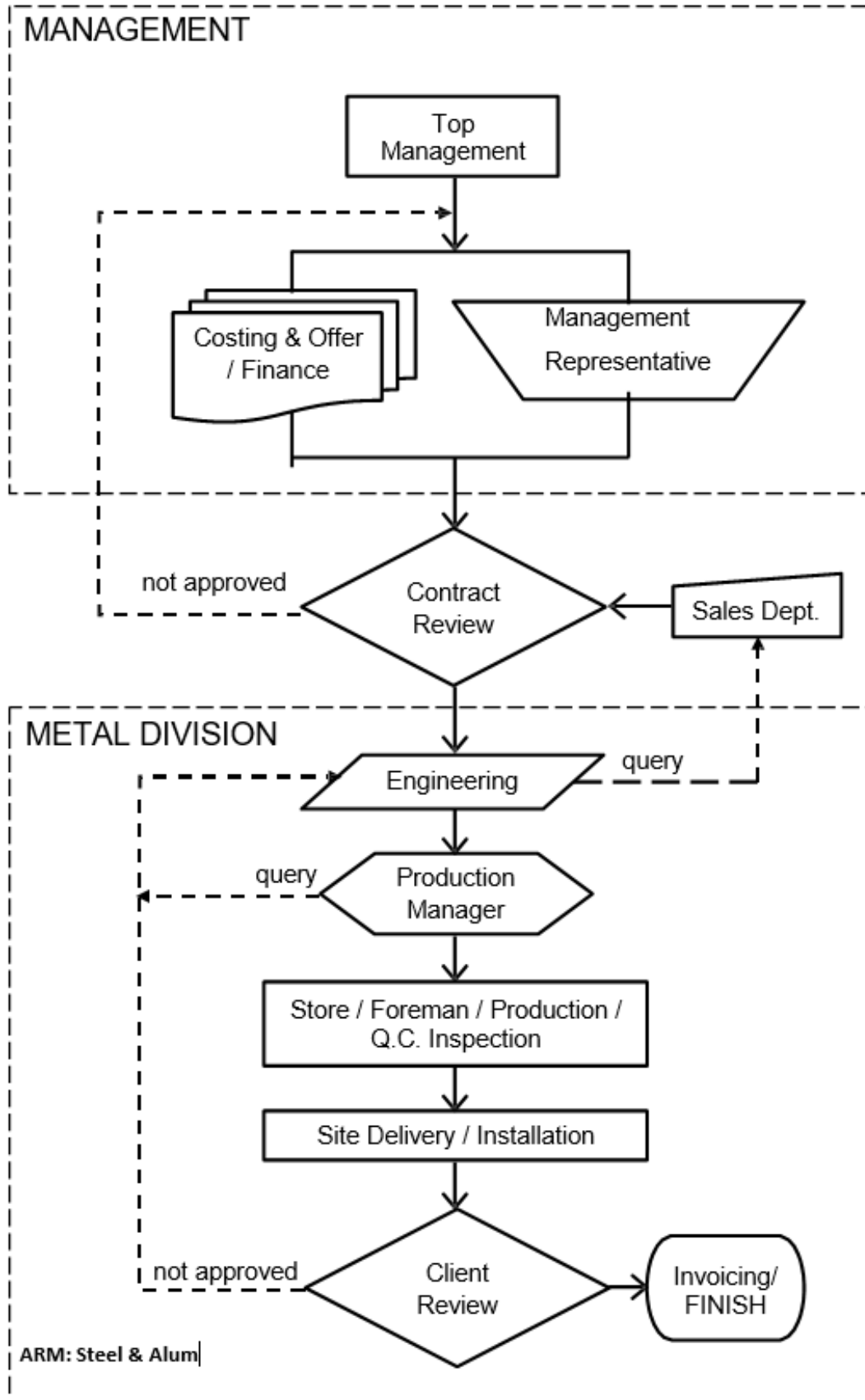
3. DIVISION PROFILE





DIVISION PROFILE

DIVISION ORGANIZATIONAL CHART



4. GENERAL STANDARDS





GENERAL STANDARDS

STRUCTURAL STEEL

PART 1: GENERAL SPECIFICATIONS

Comply with all applicable requirements, standards and codes specified in Guidelines for Design and Construction of Health Care Facilities, 2010 Edition published by Facility Guidelines Institute (also known as AIA/AAH Guidelines).

1. SUMMARY

Design, engineering, supply, fabrication, installation and test of Structural steel works, accessories, complete with reinforcing, shims, anchors, and attachment devices, etc. as specified and as shown on drawings.

2. REFERENCES

The minimum standards for products specified in this section shall be including as under but not limited to the following. Except as otherwise specified herein, perform work in accordance with specifications, codes and standards cited therein, and their latest editions (unless noted otherwise and approved by the Engineer), revisions, applicable addenda and supplements. Where there is conflict between the referenced standards the most stringent of the conditions/requirements shall be applicable, at the sole discretion of the Engineer.

The requirements contained in the latest edition of the following codes and standards shall form a part of these CRITERIA, in the manner and to the Extent specified herein.

- IBC International Building Code 2009
- AISC 7-05 Minimum Design Loads for Buildings
- AISC Allowable Stress Design of Simple Shear Connection
- AISC 13th Ed. Allowable Stress Design of Simple Shear Connection
- AISC 303-05 Code of Standard Practice for Steel Building and Bridge
- ANSI/AWS D1.1 Structural Welding Code- Steel
- BSI British Standards Institute
- UBC Uniform Building Code
- ASCE American Society of Civil Engineers
- Steel Work (Design to Limit State Theory
- Advance Civil Infrastructure Martials
- Structural Steel Designers Handbook
- Building Design and Construction

5. QUALITY DOCUMENTS





QUALITY DOCUMENTS

INTEGRATED MANAGEMENT SYSTEM POLICY

We at **Al Ruaya Al Mutakmilah Metal Const.Ind.LLC (ARM)**, operate our business in a manner that consistently meets the QHSE standards set by affected stakeholders – being customers, industry regulators and the communities within which Organization operations are conducted. The organization is committed to continuously improving its operations, processes and the services provided to its customers and interested parties.

All employees are expected to help the organization attain highest QHSE standards. It is organization policy to:

- Demonstrate the ability to consistently provide services that meet customer and applicable statutory and regulatory requirements;
- Enhance customer satisfaction through the effective application of the IMS, including processes for improvement of the system and the assurance of conformity to the customer and applicable statutory and regulatory requirement;
- Enhance the environmental performance and ensure fulfilment of compliance obligations by managing its environmental responsibilities in a systematic manner that contributes to the environmental pillar of sustainability;
- Fulfil legal and other requirements while providing safe and healthy workplace by preventing work-related injuries and ill health and proactively improve the OH & S performance by improving occupational health and safety, eliminating hazards and minimizing OH & S risks, taking advantage of OH & S opportunities and by addressing OH & S non-conformities associated with the organization;
- Identify the changing needs and expectations of our interested parties and establishing internal and external communications.
- Consider the context of the organization and align the QHSE Management System with the strategic direction of TIL to achieve the QHSE objectives with well-defined responsibilities for their fulfilment.
- Comply, Cooperate and Co-ordinate, in the spirit of partnership, with local, state and federal authorities of the all-applicable laws, legislations, regulations and standards.
- Establish, apply, maintain and strive for continual improvement of effectiveness of QHSE Management System – ISO 9001:2015, ISO 14001:2015 & ISO 45001:2018 with trained and competent staffs.
- Adapt, innovate and refine our processes in line with global business trends to maintain credibility and leadership in our field.

The organization supports the adoption of ISO 9001:2015, ISO 14001:2015 & ISO 45001:2018 Integrated Management systems with a view such that all interested parties and stakeholders benefit from this commitment.

General Manager

Date : 01/06/2024





QUALITY DOCUMENTS



UK Assessment & Inspection Ltd



Certificate of Registration

This is to certify that
Quality Management System
Of
AL RUAYA AL MUTAKAMILAH METAL CONST. IND L.L.C
SHARJAH ALSAJAA INDUSTRIAL, EMIRATES STREET
*has been independently assessed and is compliance with the
requirement of:*

ISO 9001:2015
Quality Management System
For the following scope of activities

**STRUCTURAL METAL PARTS MANUFACTURING, STEEL HANGARS & SHEDS
MANUFACTURING, BUILDING METAL PRODUCTS MANUFACTURING, METAL
PRODUCTS COATING, METALS DEBURRING & SANDBLASTING**

Certificate Number: UKAI-AMCT-24-024023

Validity of this certificate can be verified at www.ukai.org.uk

Date of Certification	02 ND JAN 2024
Issuance Date	02 ND JAN 2024
1st Surveillance Due	01 ST JAN 2025
2nd Surveillance Due	01 ST JAN 2026
Re-Certificate Due	01 ST JAN 2027

UK Assessment & Inspection Ltd.
CAR ADDRESS: 63 Maple Road, Surbiton, England, KT6 4AG

Validity of this certificate is subject to annual surveillance audits to be done successfully. This certificate is the property of UK Assessment & Inspection Ltd, and shall be returned immediately on request. UK Assessment & Inspection Ltd is an independent Systems Products and Personal assessment Body, UK Assessment & Inspection Ltd is a accredited by UK-AC.ORG



QUALITY DOCUMENTS



UK Assessment & Inspection Ltd.

CERTIFICATE

UKAI

QR Code

Certificate of Registration

This is to certify that
of
AL RUAYA AL MUTAKAMILAH METAL CONST. IND L.L.C
SHARJAH ALSAJAA INDUSTRIAL EMIRATES STREET
has been independently assessed and is compliance with the
requirement of :

ISO 14001:2015
Environment Management System
For the following scope of activities

**STRUCTURAL METAL PARTS MANUFACTURING, STEEL HANGARS & SHEDS
MANUFACTURING, BUILDING METAL PRODUCTS MANUFACTURING, METAL
PRODUCTS COATING, METALS DEBURRING & SANDBLASTING**

Certificate Number: UKAI-AMCT-24-024024

Validity of this certificate can be verified at www.ukai.org.uk

Date of Certification	02 ND JAN 2024
Issuance Date	02 ND JAN 2024
1st Surveillance Due	01 ST JAN 2025
2nd Surveillance Due	01 ST JAN 2026
Re-Certificate Due	01 ST JAN 2027

UK Assessment & Inspection Ltd.
CAB ADDRESS 43 Maple Road, Surbiton, England, KT6 4AG

Validity of this certificate is subject to annual surveillance audits to be done successfully. This certificate is the property of UK Assessment & Inspection Ltd. and shall be returned immediately on request. UK Assessment & Inspection Ltd. is an independent Systems Products and Personal assessment Body, UK Assessment & Inspection Ltd. is accredited by UG-AL-090



QUALITY DOCUMENTS

Certificate of Registration

This is to certify that
of
AL RUAYA AL MUTAKAMILAH METAL CONST. IND L.L.C
SHARJAH ALSAJAA INDUSTRIAL EMIRATES STREET

has been independently assessed and is compliance with the
requirement of:

ISO 45001:2018(OHSAS)
Occupational Health and safety Management System
For the following scope of activities

**STRUCTURAL METAL PARTS MANUFACTURING, STEEL HANGARS & SHEDS
MANUFACTURING, BUILDING METAL PRODUCTS MANUFACTURING, METAL
PRODUCTS COATING, METALS DEBURRING & SANDBLASTING**

Certificate Number: UKAI-AMCT-23-024025

Validity of this certificate can be verified at www.ukai.org.uk

Date of Certification	02 ND JAN 2024
Issuance Date	02 ND JAN 2024
1st Surveillance Due	01 ST JAN 2025
2nd Surveillance Due	01 ST JAN 2026
Re-Certificate Due	01 ST JAN 2027

UK Assessment & Inspection Ltd.
CAB ADDRESS :61 Maple Road, Serrilton, England, KT6 6AG
Validity of this certificate is subject to annual surveillance audits to be done successfully. This certificate is the property of UK Assessment & Inspection Ltd. and shall be returned immediately on request. UK Assessment & Inspection Ltd. is an independent Systems Products and Personal assessment Body, UK Assessment & Inspection Ltd is a accredited by UG-AC.ORG

6. OFFICIAL DOCUMENTS





OFFICIAL DOCUMENTS

GOVERNMENT OF SHARJAH
Economic Development Department



حُكُومَةُ الشَّارِجَة
دائرة التنمية الاقتصادية

رخصة صناعية
Industrial License



دليل المراقبة الصناعي
Sharjah Industrial Guide



تفاصيل الرخصة License Details

Issue Date	2023/08/30	تاريخ الإصدار	License No.	815266	رقم الرخصة
Expiry Date	2024/08/30	تاريخ الإنتهاء	Registration No.	214442	رقم المسجل
Trade Name	AL RUAYA AL MUTAKAMILAH METAL CONST. IND L.L.C		الإسم التجاري: الرويا المتكاملة لصناعة الإنشاءات المعدنية ذ م م		
Legal status	Limited Liability Company		الشكل القانوني: شركة ذات مسؤولية محدودة		

أطراف الرخصة License Members

المسهم	الصفة	رقم الهوية / الجواز	الجنسية	إسم المستثمر	رقم المستثمر
Shares	Type	ID/Passport No.	Nationality	Investor Name	Investor No.
%25	شريك	784198570949853	الهند	محمد بلال شمس الدين شمس الدين	4864643
%25	شريك	784197813737638	الهند	شعير احمد ابراهيم شفع الله بشا ابراهيم شفع الله	4873797
%25	شريك	784198617061076	الهند	جالانديب سينغ سوخديف سينغ	4873798
%25	شريك	784198926031950	الهند	بهي حسين كبير حسين مينلا	4873799

المدير: شعير احمد ابراهيم شفع الله بشا ابراهيم شفع الله

أنشطة الرخصة: صناعة الأشغال المعدنية للمباني، صناعة الأطر والهيكل المعدنية اللازمة للتشييد وأجزاء منها، صناعة الأجزاء المعدنية الإنشائية للطلاء بالمعتمدين معقدة المعادن وتطبيقاتها بالسفن الرطبة

العنوان: شارع قنا للصناعة صناعية/الشارع رقم 39795 خلف شارع الإمارات مكتبة أرمن مسورة ملك حمد مصبح احمد سيف الطويحي

رقم الهاتف المتحرك: 0588903104
مكشوف البريد: 60511 دبي



2023/08/30

تاريخ الصلاحية

39795

رقم المسجل

- This document is official. It doesn't need to be stamped or signed.
To view license details please visit SEDD web site: www.sedd.ae
- It is prohibited to distribute advertisements in public places and residential areas.
- A permit is required when conducting any promotion.

- هذه الوثيقة رسمية ولا تحتاج لتعريف أو توقيع.
لتشاهدة من سمعة الترخيص يرجى زيارة موقع وزارة: www.sedd.ae
- يمنع توزيع الإعلانات في الأماكن العامة والأحياء السكنية.
- يلزم الحصول على تصريح عند إجراء أي ترويج أو ترويج.



QUALITY DOCUMENTS

GOVERNMENT OF SHARJAH
Economic Development Department



حكومة الشارقة
دائرة التنمية الاقتصادية

شهادة سجل صناعية
**Industrial Register
Certificate**



تفاصيل الرخصة License Details

License No.	815266	Registration No.	214442	رقم السجل
Expiry Date	2024/08/30	Issue Date	2023/08/30	تاريخ الإصدار
Capital	100000	رأس المال		
Trade Name	AL RUAYA AL MUTAKAMILAH METAL CONST. IND L.L.C	الاسم التجاري	الرويا المتكاملة لصناعة الإنشاءات المعدنية ذ م م	
Legal status	Limited Liability Company	الشكل القانوني	شركة ذات مسؤولية محدودة	

المدير: شير احمد ابراهيم شفيق الله بشا ابراهيم شفيق الله

النشاط الرخصة: صناعة الأشغال المعدنية للمباني، صناعة الأطر والهياكل المعدنية للترعة للتشديد وأجزاء منها، صناعة الأجزاء المعدنية الإنشائية، الطلاء بالمعادن، معالجة المعادن وتنظيفها بالمسحوق الرملي

العنوان: الشارقة-العصبة-صناعة الشارقة- خلف شارع الإمارات سكنية-مبنى مسورة ملك حمد مصبح احمد سيف الطنجي



2023/08/30

تاريخ الطباعة

39795

رقم المستند

- This document is official. It doesn't need to be stamped or signed.
To view license details please visit SEDD web site: www.sedd.ae
- It is prohibited to distribute advertisements in public places and residential areas.
- A permit is required when conducting any promotion.

- هذه الوثيقة رسمية ولا تحتاج لخطم أو توقيع.
للتأكد من صحة البيانات، يرجى زيارة موقع SEDD: www.sedd.ae
- يمنع توزيع الإعلانات في الأماكن العامة والأحياء السكنية.
- يلزم الحصول على تصريح عند توزيع أي مواد ترويجية.



QUALITY DOCUMENTS

GOVERNMENT OF SHARJAH
Economic Development Department



حُكُومَةُ الشَّارِجَة
دائرة التنمية الاقتصادية

سجل المستفيد الحقيقي
Real Beneficiary

المستفيد الحقيقي طرف داخل الرخصة Real Beneficiary For Investor Inside License

محمد بلال شمس الدين شمس الدين

4864643	رمز المستثمر / Investor Number
محمد بلال شمس الدين شمس الدين	الاسم العربي / Arabic Name
محمد بلال شمس الدين شمس الدين	الاسم الانجليزي / English Name
66060647	الرقم الموحد / Unified Number
784198570949853	رقم الهوية / Emirates Id
	خلاصة القيد / Civic ID
P2850984	رقم جواز السفر / Passport No
06/06/1985	تاريخ الميلاد / Birth Date
null-حسب	العنوان / Address
	عنوان جهة العمل / Work Address
0552489988	رقم الهاتف / Mobile

شبير احمد ابراهيم شفيق الله بشا ابراهيم شفيق الله

4873797	رمز المستثمر / Investor Number
شبير احمد ابراهيم شفيق الله بشا ابراهيم شفيق الله	الاسم العربي / Arabic Name
شبير احمد ابراهيم شفيق الله بشا ابراهيم شفيق الله	الاسم الانجليزي / English Name
75709795	الرقم الموحد / Unified Number
784197813737638	رقم الهوية / Emirates Id
	خلاصة القيد / Civic ID
Z5715463	رقم جواز السفر / Passport No
19/03/1978	تاريخ الميلاد / Birth Date
شارقة-الذيد-اللدن	العنوان / Address
	عنوان جهة العمل / Work Address
0521061978	رقم الهاتف / Mobile

جاسم بن سينا سوكريف سينا



2023/08/30

تاريخ الطابعة

39795

رقم المستلم

- This document is official. It doesn't need to be stamped or signed.
To view license details please visit SEDO web site: www.sedo.ae
- It is prohibited to distribute advertisements in public places and residential areas.
- A permit is required when conducting any promotion.

- هذه الوثيقة رسمية ولا تحتاج لتوقيع أو ختم.
لتفاصيل الرخصة يرجى زيارة موقع SEDO: www.sedo.ae
- من المحظور توزيع الاعلانات في الأماكن العامة والأحياء السكنية.
- يتطلب تصريح عند القيام بأي حملة ترويجية.



QUALITY DOCUMENTS

GOVERNMENT OF SHARJAH
Economic Development Department



حُكُومَةُ الشَّارِجَة
دائرة التنمية الاقتصادية

4873798	رمز المستثمر / Investor Number
جاملتیب سونغ سوخديف سونغ	الاسم العربي / Arabic Name
جاملتیب سونغ سوخديف سونغ	الاسم الانجليزي / English Name
87222057	الرقم الموحد / Unified Number
784198617061076	رقم الهوية / Emirates Id
	خلاصة القيد / Civic ID
N0412876	رقم جواز السفر / Passport No
12/09/1986	تاريخ الميلاد / Birth Date
دیس جو دیس الورقاه الأولى	العنوان / Address
	عنوان جهة العمل / Work Address
0554785495	رقم الهاتف / Mobile

بھی حسین کبیر حسین مینقا

4873799	رمز المستثمر / Investor Number
بھی حسین کبیر حسین مینقا	الاسم العربي / Arabic Name
بھی حسین کبیر حسین مینقا	الاسم الانجليزي / English Name
130958153	الرقم الموحد / Unified Number
784198926031950	رقم الهوية / Emirates Id
	خلاصة القيد / Civic ID
V9094480	رقم جواز السفر / Passport No
10/10/1989	تاريخ الميلاد / Birth Date
دیس جو دیس الرشاه الأولى	العنوان / Address
	عنوان جهة العمل / Work Address
0502308177	رقم الهاتف / Mobile

المستفيد الحقيقي طرف خارج الرخصة Real Beneficiary For Investor Outside License

أعضاء الإدارة الاسمين Real Beneficiary Management Members

Investor Name	اسم المستثمر
---------------	--------------



2023/08/30

تاريخ الصياغة

39795

رقم المستثمر

- This document is official. It doesn't need to be stamped or signed.
To view license details please visit SCDD web site: www.sadd.ae
- It is prohibited to distribute advertisements in public places and residential areas.
- A permit is required when conducting any promotion.

- هذا الوثيقة رسمية ولا تحتاج لاسم أو توقيع
لتفقد من حساب الشركات يرجى زيارة موقع شارع > www.sadd.ae
- يمنع توزيع الاعلانات في الأماكن العامة والأحياء السكنية
- يجب الحصول على تصريح عند إجراء أي عرض أو ترويج



QUALITY DOCUMENTS





شهادة عضوية
 Membership Certificate

شهادة تسجيل عضوية
 Membership Registration Certificate For Year

(2023)

إن غرفة تجارة وصناعة الشارقة بنسأء على القانون رقم (٩) لسنة ٢٠١٨م
 Sharjah Chamber of Commerce and Industry according to the law no. (9) 2018

رقم التسجيل : 241956
Company Name : AL RUAYA AL MUTAKAMILAH METAL CONST. IND L.L.C

رقم الترخيص : 815266
License NO : 815266

رقم السجل التجاري : 214442
Commercial Registration NO : 214442

الجنسية : الإمارات
Nationality : الإمارات

نوع النشاط : شركة ذات مسؤولية
Legal Form : شركة ذات مسؤولية (ش.م.م)

جنسية الشركاء : الإمارات
Partners Nationality : الإمارات

العنوان : الشارقة-الصحة الصناعية/الشارقة خلف شارع الإمارات مكتبة-الرحمن مسودة ملكه عند مصنع احمد سيف الطنجي
Address : SHARJAH ALSAJAA INDUSTRIAL Emirates Street

نوع النشاط : صناعة الأجزاء المعدنية الإنشائية ، صناعة الإنشادات المعدنية ، صناعة الأئعمال المعدنية للبهني ، طلاء المنتجات المعدنية ، معالجة المعادن وتطعيمها بالطلاء الرطب
Activity : Structural Metal Parts Manufacturing , Steel Hangers & Sheds Manufacturing , Building Metal Products Manufacturing , Metal Products Coating , Metals Deburring & Sandblasting

ملاحظات :
Remarks :

التوقيع : SEDDO
تاريخ الإصدار : 30/8/2023

تاريخ الانتهاء : 30/8/2024





M 272709



QUALITY DOCUMENTS

الهيئة الاتحادية للضرائب
FEDERAL TAX AUTHORITY



شهادة التسجيل في ضريبة القيمة المضافة
أصدرت بموجب الصلاحية الممنوحة بموجب المادة (4) من المرسوم بقانون رقم (13) لسنة 2016 بشأن إنشاء الهيئة الاتحادية للضرائب

Certificate of Registration for Value Added Tax in the United Arab Emirates
Issued under the authority allocated by Art. 4 of the Federal Decree-Law No. 13 of 2016

The Federal Tax Authority certifies that the entity below is
a registered person for Value Added Tax in the UAE

تشهد الهيئة الاتحادية للضرائب أن الجهة التالية مسجلة لضريبة القيمة المضافة في الإمارات العربية
المتحدة

Tax Registration Number	104204025100003	رقم التسجيل الضريبي
Legal Name of Entity (Arabic)	الرويا للحكاملة لتساعده الانشادات للمعدنية ذ م م	الاسم القانوني للكيان (باللغة العربية)
Legal Name of Entity (English)	AL RUAYA AL MUTAKAMILAH METAL CONST. IND L.L.C	الاسم القانوني للكيان (باللغة الانجليزية)
The Registered Address and Contact Number	Office No 1 ,Hamad Musabah Ahmed Saif, Al Sajaa Industrial Area, Al Sajaa, Sharjah, 0, Sharjah +971521061978	العنوان المسجل ورقم التواصل
Effective Registration Date	01/03/2024	تاريخ التسجيل الفعلي
First VAT Return Period	01/03/2024 - 31/05/2024	فترة أول إقرار لضريبة القيمة المضافة
VAT Return due date	28/06/2024	تاريخ استحقاق الإقرار الضريبي لضريبة القيمة المضافة
Start and end dates of Tax periods	1st Mar to 31st May, 1st June to 31st Aug, 1st Sep to 30th Nov, 1st Dec to 28th Feb	تواريخ بدء وانتهاء الفترات الضريبية

List of sole proprietorships/sole establishments and
branches under the registered taxable person:

القائمة للملكية الفردية/التأسيسات الفردية والفروع المدرجة ضمن التسجيل الضريبي:

Legal Name	License Issuing Authority	License Number/رقم الرخصة	جهة الترخيص	الاسم القانوني
------------	---------------------------	---------------------------	-------------	----------------

يرجى التأكد من صحة تفاصيل الشهادة. يجب إبلاغ الهيئة الاتحادية للضرائب في حال تغيير الأسس التي حصلت فيها على رقم التسجيل الضريبي
الخاص بك.*

*Please check that the details on this certificate are correct. You must inform the Federal Tax Authority of any change on
the basis of which you obtained your Tax Registration Number.

Date of Issue

05/02/2024

تاريخ الإصدار



Version Number

2024/VAT/0000260262/001

رقم الإصدار



Al Ruaya Al Mutakmilah Metal Const.Ind.LLC
Structural Steel, Tensile Shade, Architectural Metal, Aluminium & Cladding, Stainless Steel

Document: ARM-PQ-01

Section: 06

PQD Date: 01/06/2024

Page: 7

QUALITY DOCUMENTS

الهيئة الاتحادية للضرائب
FEDERAL TAX AUTHORITY



United Arab Emirates

	Legal Name	License Issuing Authority	License Number/رقم الرخصة	جهة الترخيص	الاسم القانوني
1	AL RUAYA AL MUTAKAMILAH METAL CONST. IND L.L.C	Sharjah Economic Development Department	815266	دائرة التنمية الاقتصادية بالشارقة	الرويا المتكاملة لصناعة الانشاءات المعدنية ذ م م

يرجى التأكد من صحة تفاصيل الشهادة. يجب إبلاغ الهيئة الاتحادية للضرائب في حال تغيير الأسس التي حصلت فيها على رقم التسجيل الضريبي الخاص بك.*

*Please check that the details on this certificate are correct. You must inform the Federal Tax Authority of any change on the basis of which you obtained your Tax Registration Number.

Date of Issue

05/02/2024

تاريخ الإصدار



Version Number

2024/VAT/0000260262/001

رقم الإصدار

7. CONSULTANT/CLIENT APPROVALS





CONSULTANT/CLIENT APPROVALS



بومبي لمقاولات البناء ش.ذ.م.م
BOMBAY CONTRACTING L.L.C

Ref No: B0105-WCC-7001-R0

Date: 09/05/2024

Work Completion Letter

Client : AFE Contracting LLC
Project : Proposed Façade Reinstatement Work at Dubai Festival City Mall, Dubai, U.A.E
Address : P.O. Box 4133 Dubai, UAE

Dear M/s. AFE Contracting LLC

Subject : Work Completion Letter

We pleased to inform you that the Proposed Façade Reinstatement Work at Dubai Festival City Mall, Dubai, U.A.E for Structural Steel Package has been successfully completed as per the terms outlined in our agreement dated on 12/12/2023, Purchase order reference no: 4514782417.

This Dubai Festival City Mall - Structural Steel Package was completed on 19 / March / 2024. Throughout the duration of the project, our team diligently worked to ensure that all requirements were met in a timely and efficient manner.

Please review the deliverables and confirm your satisfaction with the completed work by signing and returning a copy of this letter. if you have any questions or require further assistance, please do not hesitate to contact us.

Thank you for entrusting us with this Dubai Festival City Mall - Structural Steel Package.

We look forward to the opportunity of working with you again in the future.

Received by

Sign and Stamp
Mr. Shabeer Ahamed
Managing Director
+971521061978
shabeer@bombaycontracting.com
M/s. Bombay Contracting LLC



Sign and Stamp
Mr. Vijayaram Kunhiraman
Sr. Project Manager
+971564098482
vijayaram.kunhiraman@alfuttaim.com
M/s. AFE Contracting LLC



QUALITY DOCUMENTS



WORK INSPECTION REQUEST (WIR)

Contract	DR009P01	Company	Contractor: AFE Contracting LLC Sub-Contractor: Bombay Contracting LLC	IR No.	DFC-BOC-DR009P01-SJ-WIR-00001-Rev01	Date	10/01/24
To:	FACE ARCHITECTURE + DESIGN (Original)			cc.	AFG-RE Document Control (1 copy) AFG-RE Project Manager (1 copy)		

We give notice that the following work will be available for inspection:
• Baseplate fixing

See also Relevant Check lists attached
Inspection & Test Plan Reference:

Date & Time available for Inspection: 11.01.2024 & 10:00 am

Issued by:
Mohamed Kamil

Signature:

Work to be inspected:

Inspection request for Drilling of holes for Elevation 1,2,3,4 in Level 1, Level 2 Base plates.

Discipline:

- Architectural Structural Mechanical Electrical Plumbing
 Interior Landscape Infrastructural Other (specify)

Engineer or Engineer's Representative Inspectors Comments:

1. The areas highlighted in green in the attached drawings are not yet ready for inspection.
2. In the attached drawings, the areas highlighted in red indicate that the installation does not match the drawings. Based on the site conditions, the existing glazing transom profiles are in place, leading to a change in the installation location. Please verify the base plate location according to the site conditions and submit the drawings for structural engineering approval. Once approved, we will inspect this area. However, the remaining base plate locations have been inspected according to the grid lines provided by the contractor, and it is acceptable to proceed with further work at the site.
3. Before initiating work on the site, the steel contractor should conduct a site survey for drill holes to prevent any issues during the erection process.

At (time):

On (date):

Signed For

The above works have been inspected and the next operation may proceed subject to Inspection Status -
Works rejected must be resubmitted for inspection.

CONSULTANT / ENGINEER'S REPRESENTATIVE DATE RECEIVED	RETURNED TO CONTRACTOR - INSPECTION STATUS			
	A: Work May Proceed		C: Review and Resubmit Work may not Proceed	
SIGNED	B: Work May Proceed subject to incorporation of changes indicated	<input checked="" type="checkbox"/>	D: Inspection not required.	
Distribution:	IMPORTANT: Permission to proceed does not constitute acceptance or approval of the Work under inspection and does not relieve contractor from full compliance with contractual obligation.			
<input type="checkbox"/> Employer's Representative <input type="checkbox"/> Contractor (Original) <input type="checkbox"/> Consultant <input type="checkbox"/> Engineer <input type="checkbox"/> AFG-RE Document Control <input type="checkbox"/> AFG-RE PM	CONSULTANT/ENGINEER'S REPRESENTATIVE SIGN <u>Ka laise lv en</u> DATE <u>10-01-2024</u>			



QUALITY DOCUMENTS



Wafiqain Group/فريق الوافيقين



WORK INSPECTION REQUEST (WIR)

Contract	DR069P01	Company	Contractor: AFE Contracting LLC Sub-Contractor: Bombay Contracting L.L.C	IR No.	DFC-BOC-DR069P01-SJ-WIR-00002-Rev01	Date	03/02/24
To :	FACE ARCHITECTURE + DESIGN (Original)		cc.	AFG-RE Document Control (1 copy) AFG-RE Project Manager (1 copy)			

We give notice that the following work will be available for inspection:

- Internal Beam Fixing

See also Relevant Check lists attached

Inspection & Test Plan Reference:

Date & Time available for inspection: 03-02-2024 & 12:00PM

Issued by [Name]:

Signature:

MOHAMED KAMIL

Work to be inspected:

Inspection request for installation of internal beams, with NDT Test and Torque Test.

Discipline:

- Architectural Structural Mechanical Electrical Plumbing
 Interior Landscape Infrastructural Other (specify)

Engineer or Engineer's Representative Inspectors Comments:

Approval will be subject to the following comments:

- Alignment must be completed before proceeding with further work.
- Please note that the torque test, pullout test, and integrity test must be conducted on site at the locations specified by the consultant. The tests must also be witnessed by the consultant.
- The warranty must be in accordance with the project specifications.
- Approval does not excuse the contractor from complying with contractual terms, conditions, and specifications.

At (time):

On (date):

Signed For

The above works have been inspected and the next operation may proceed subject to Inspection Status
Works rejected must be resubmitted for Inspection.

CONSULTANT / ENGINEER'S REPRESENTATIVE
DATE RECEIVED

RETURNED TO CONTRACTOR – INSPECTION STATUS

SIGNED

A: Work May Proceed	<input type="checkbox"/>	C: Revise and Resubmit Work may not Proceed	<input type="checkbox"/>
B: Work May Proceed subject to incorporation of changes indicated	<input checked="" type="checkbox"/>	D: Inspection not required.	<input type="checkbox"/>

Distribution:

- Employer's Representative Contractor (Original)
 Consultant Engineer
 AFG-RE Document Control AFG-RE PM

IMPORTANT: Permission to proceed does not constitute acceptance or approval of the Work under inspection and does not relieve contractor from full compliance with contractual obligation

CONSULTANT/ENGINEER'S REPRESENTATIVE

SIGN Kalaiselvan Malaiappan DATE 06/02/2024



QUALITY DOCUMENTS



AFG Group of Companies



WORK INSPECTION REQUEST (WIR)

Contract	DR069P01	Company	Contractor: AFE Contracting LLC Sub-Contractor: - Bombay Contracting LLC	IR No.	DFC-BOC-DR069P01-SJ-WIR-00003-Rev01	Date	10/02/24
To	FACE ARCHITECTURE + DESIGN (Original)			cc.	AFG-RE Document Control (1 copy) AFG-RE Project Manager (1 copy)		

We give notice that the following work will be available for inspection:

- ELEVATION 3 CANOPY

See also Relevant Check lists attached

Inspection & Test Plan Reference: DFC-BOC-DR069P01-SJ-MIR-0004 Date & Time available for inspection: 10-02-2024 & 2:00PM

Issued by [Name]:

MOHAMED KAMIL

Signature:

Work to be Inspected:

Inspection request for installation of ELEVATION 3 CANOPY FROM GRID Z-V & TORQUE TEST

Discipline:

- Architectural Structural Mechanical Electrical Plumbing
 Interior Landscape Infrastructural Other (specify)

Engineer or Engineer's Representative Inspectors Comments:

Approval Subject to the following below comments complying

- Please ensure that the alignment is done as per the comments provided on the site.
- Please ensure that all bolts are tightened and submit the torque report along with the images for review and approval.
- Approval does not excuse the contractor from compliance with contractual terms, conditions, and specifications.
- The warranty must comply with the project specifications.
- Changes in member dimensions, approximately 100mm variation, have been noticed as per the attached drawings in grid V to W. These changes have been verified in the design calculation if any issues found that needs to be notified and get the approval before proceeding further at the site and should be accurately reflected in the as-built drawings.

The above works have been inspected and the next operation may proceed subject to Inspection Status
Works rejected must be resubmitted for inspection.

CONSULTANT / ENGINEER'S REPRESENTATIVE
DATE RECEIVED

SIGNED

RETURNED TO CONTRACTOR – INSPECTION STATUS

A: Work May Proceed



C: Revise and Resubmit Work may not Proceed

B: Work May Proceed subject to incorporation of changes indicated

D: Inspection not required.

Distribution:

- Employer's Representative Contractor (Original)
 Consultant Engineer
 AFG-RE Document Control AFG-RE PM

IMPORTANT: Permission to proceed does not constitute acceptance or approval of the Work under inspection and does not relieve contractor from full compliance with contractual obligation

CONSULTANT/ENGINEER'S REPRESENTATIVE

SIGN Kalaiselvan Malaiappan DATE 17/02/2024



QUALITY DOCUMENTS



Wafiqain Group/فريق الوفيق



WORK INSPECTION REQUEST (WIR)

Contract	DR068P01	Company	Contractor: AFE Contracting LLC Sub-Contractor: - Bombay Contracting L.L.C	IR No.	DFC-BOC-DR068P01-SJ-WIR-00004-Rev01	Date	10/02/24
To :	FACE ARCHITECTURE + DESIGN (Original)		cc.	AFG-RE Document Control (1 copy) AFG-RE Project Manager (1 copy)			

We give notice that the following work will be available for inspection:

- BASEPLATE FIXING

See also Relevant Check lists attached

Inspection & Test Plan Reference:

Date & Time available for Inspection: 10-02-2024 & 2:00PM

Issued by [Name]

Signature:

MOHAMED KAMIL

Work to be inspected:

Inspection request for Drill Hole Depth for Level 2 beam Baseplate fixing

Discipline:

- Architectural Structural Mechanical Electrical Plumbing
 Interior Landscape Infrastructural Other (specify)

Engineer or Engineer's Representative Inspectors Comments:

Approval for the project will be subject to the following conditions:

- Ensure that the drill hole depth aligns with the design calculation.
- Thoroughly clean the hole, and apply chemicals in accordance with the provided TDS.
- Approval does not exempt the contractor from complying with the project specifications.
- The warranty must align with the project specifications.

At (time):

On (date):

Signed For

The above works have been inspected and the next operation may proceed subject to Inspection Status
Works rejected must be resubmitted for Inspection.

CONSULTANT / ENGINEER'S REPRESENTATIVE
DATE RECEIVED

RETURNED TO CONTRACTOR – INSPECTION STATUS

SIGNED

A: Work May Proceed



C: Revise and Resubmit Work may not Proceed

B: Work May Proceed subject to incorporation of changes indicated

D: Inspection not required.

Distribution:

- Employer's Representative Contractor (Original)
 Consultant Engineer
 AFG-RE Document Control AFG-RE PM

IMPORTANT: Permission to proceed does not constitute acceptance or approval of the Work under inspection and does not relieve contractor from full compliance with contractual obligation

CONSULTANT/ENGINEER'S REPRESENTATIVE

SIGN Kalaisevan Malalappan DATE 12/02/2024



QUALITY DOCUMENTS



Ministry of Planning, Government of Dubai



WORK INSPECTION REQUEST (WIR)

Contract	DR069P01	Company	Contractor: AFE Contracting LLC Sub-Contractor: - Bombay Contracting L.L.C	IR No.	DFC-BOC-DR069P01-SJ-WIR-00005-Rev01	Date	15/02/24
To:	FACE ARCHITECTURE + DESIGN (Original)			cc.	AFG-RE Document Control (1 copy) AFG-RE Project Manager (1 copy)		

We give notice that the following work will be available for inspection:

- Elevation 3 Canopy

See also Relevant Check lists attached

Inspection & Test Plan Reference: AFS-BOC-DR069P01-SJ-MIR-00001-Rev01 Date & Time available for inspection: 15-02-2024 & 11:00AM

Issued by [Name]:

MOHAMED KAMIL

Signature:

Work to be inspected:

Inspection request for installation for Elevation 3 canopy with torque test.

Discipline:

- Architectural Structural Mechanical Electrical Plumbing
 Interior Landscape Infrastructural Other (specify)

Engineer or Engineer's Representative Inspectors Comments:

Approval will be subject to the following comments:

- Repainting should be done at any locations on-site where welding or damage has occurred.
- Alignment must be completed before proceeding with further work.
- Please note that the torque test, pullout test, and integrity test must be conducted on site at the locations specified by the consultant. The tests must also be witnessed by the consultant.
- The warranty must be in accordance with the project specifications.
- Approval does not excuse the contractor from complying with contractual terms, conditions, and specifications.

At (time):

On (date):

Signed For

The above works have been inspected and the next operation may proceed subject to Inspection Status
Works rejected must be resubmitted for inspection.

CONSULTANT / ENGINEER'S REPRESENTATIVE
DATE RECEIVED

SIGNED

RETURNED TO CONTRACTOR – INSPECTION STATUS

A: Work May Proceed	<input type="checkbox"/>	C: Revise and Resubmit Work may not Proceed	<input type="checkbox"/>
B: Work May Proceed subject to incorporation of changes indicated	<input checked="" type="checkbox"/>	D: Inspection not required.	<input type="checkbox"/>

IMPORTANT: Permission to proceed does not constitute acceptance or approval of the Work under inspection and does not relieve contractor from full compliance with contractual obligation

CONSULTANT/ENGINEER'S REPRESENTATIVE

SIGN Kalaiselvan Malaiappan DATE 19/02/2024



QUALITY DOCUMENTS



WORK INSPECTION REQUEST (WIR)

Contract	DR069P01	Company	Contractor: AFE Contracting LLC Sub-Contractor: - Bombay Contracting LLC	IR No.	DFC-BOC-DR069P01-SJ-WIR-00005-Rev01	Date	17/02/24
To:	FACE ARCHITECTURE + DESIGN (Original)			cc.	AFG-RE Document Control (1 copy) AFG-RE Project Manager (1 copy)		

We give notice that the following work will be available for inspection:

- Elevation 2, Level 1 Beam with Torque test.

See also Relevant Check lists attached

Inspection & Test Plan Reference: AFS-BOC-DR069P01-SJ-MIR-00008-Rev01 Date & Time available for Inspection: 17-02-2024 & 2:00PM

Issued by (Name):

MOHAMED KAMIL

Signature:

Work to be inspected:

Inspection request for installation of Level 1 Beam installation with Torque.

Discipline:

- Architectural Structural Mechanical Electrical Plumbing
 Interior Landscape Infrastructural Other (specify)

Engineer or Engineer's Representative Inspectors Comments:

Approval will be subject to the following comments:

- Repainting should be done at any locations on-site where welding or damage has occurred.
- Alignment must be completed before proceeding with further work.
- Please ensure that the anchor embedded depth meets the approved design calculations. Additionally, make sure that there are 7 to 8 threads visible after tightening the bolt.
- The warranty must be in accordance with the project specifications.
- Approval does not excuse the contractor from complying with contractual terms, conditions, and specifications.
- The torque report, along with site images, should be submitted as a separate report when submitting the as-built drawing.

At (time):

On (date):

Signed For

The above works have been inspected and the next operation may proceed subject to inspection Status
Works rejected must be resubmitted for inspection.

CONSULTANT / ENGINEER'S REPRESENTATIVE
DATE RECEIVED

SIGNED

RETURNED TO CONTRACTOR – INSPECTION STATUS

A: Work May Proceed	<input type="checkbox"/>	C: Revise and Resubmit Work may not Proceed	<input type="checkbox"/>
B: Work May Proceed subject to incorporation of changes indicated	<input checked="" type="checkbox"/>	D: Inspection not required	<input type="checkbox"/>

IMPORTANT: Permission to proceed does not constitute acceptance or approval of the Work under inspection and does not relieve contractor from full compliance with contractual obligation

CONSULTANT/ENGINEER'S REPRESENTATIVE

SIGN Kalaiselvan Malaiappan DATE 19/02/2024



QUALITY DOCUMENTS



WORK INSPECTION REQUEST (WIR)

Contract	DR06BP01	Company	Contractor: AFE Contracting LLC Sub-Contractor: - Bombay Contracting L.L.C	IR No.	DFC-BOC-DR06BP01-SJ-WIR-00007-Rev01	Date	22/02/24
To:	FACE ARCHITECTURE + DESIGN (Original)			cc.	AFG-RE Document Control (1 copy) AFG-RE Project Manager (1 copy)		

We give notice that the following work will be available for inspection:

- Elevation 2, Level 3 hole depth inspection.

See also Relevant Check lists attached

Inspection & Test Plan Reference:

Date & Time available for Inspection: 22-02-2024 & 12:00PM

Issued by [Name]

Signature:

MOHAMED KAMIL

Work to be Inspected:

inspection conducted for the drilled holes only.

inspection request for installation of Level 1 Beam installation with Torque.

Discipline:

- Architectural Structural Mechanical Electrical Plumbing
 Interior Landscape Infrastructural Other (specify)

Engineer or Engineer's Representative Inspectors Comments:

Approval will be subject to the following conditions:

- Please ensure that the embedded depth aligns with the approved design calculations.
- Before installing the bolts, make sure the drilled holes are clean and free of dust. The chemical application should be applied as per the manufacturer's recommendations.
- The warranty must be in accordance with the project specifications.
- Approval does not excuse the contractor from complying with contractual terms, conditions, and specifications.
- Additionally, make sure that there are 7 to 8 threads visible after tightening the bolt.

At (time):

On (date):

Signed For

The above works have been inspected and the next operation may proceed subject to Inspection Status
Works rejected must be resubmitted for inspection.

CONSULTANT / ENGINEER'S REPRESENTATIVE
DATE RECEIVED

RETURNED TO CONTRACTOR – INSPECTION STATUS

SIGNED

A: Work May Proceed	C: Revise and Resubmit Work may not Proceed
B: Work May Proceed subject to incorporation of changes indicated	D: Inspection not required.

Distribution:

- Employer's Representative Contractor (Original)
 Consultant Engineer
 AFG-RE Document Control AFG-RE PM

IMPORTANT: Permission to proceed does not constitute acceptance or approval of the Work under inspection and does not relieve contractor from full compliance with contractual obligation

CONSULTANT/ENGINEER'S REPRESENTATIVE

SIGN _____ DATE _____



QUALITY DOCUMENTS



Wafatam Group Ltd. شركة الوفاة للتجارة



WORK INSPECTION REQUEST (WIR)

Contract	DR068P01	Company	Contractor: AFE Contracting LLC Sub-Contractor: - Bombay Contracting LLC	IR No.	DFC-BOC-DR068P01-SJ-WIR-00008-Rev01	Date	12/03/24
To:	FACE ARCHITECTURE + DESIGN (Original)		cc.	AFG-RE Document Control (1 copy) AFG-RE Project Manager (1 copy)			

We give notice that the following work will be available for inspection:

- Elevation 2, Level 3 hole depth inspection.

See also Relevant Check lists attached
Inspection & Test Plan Reference:

Date & Time available for Inspection: 02-03-2024 & 12:00PM

Issued by [Name]
MOHAMED KAMIL

Signature:

Work to be Inspected: Inspection conducted for the drilled holes only.

Inspection request for installation of Level 1 Beam installation with Torque.

Discipline:

- Architectural Structural Mechanical Electrical Plumbing
 Interior Landscape Infrastructural Other (specify)

Engineer or Engineer's Representative Inspectors Comments:

Approval will be subject to the following conditions:

- Please ensure that the embedded depth aligns with the approved design calculations.
- Before installing the bolts, make sure the drilled holes are clean and free of dust. The chemical application should be applied as per the manufacturer's recommendations.
- The warranty must be in accordance with the project specifications.
- Approval does not excuse the contractor from complying with contractual terms, conditions, and specifications.
- Additionally, make sure that there are 7 to 8 threads visible after tightening the bolt.

At (time):

On (date):

Signed For

The above works have been inspected and the next operation may proceed subject to Inspection Status
Works rejected must be resubmitted for inspection.

CONSULTANT / ENGINEER'S REPRESENTATIVE
DATE RECEIVED

SIGNED

RETURNED TO CONTRACTOR – INSPECTION STATUS

A: Work May Proceed	<input type="checkbox"/>	C: Revise and Resubmit Work may not Proceed	<input type="checkbox"/>
E: Work May Proceed subject to incorporation of changes indicated	<input checked="" type="checkbox"/>	D: Inspection not required.	<input type="checkbox"/>

IMPORTANT: Permission to proceed does not constitute acceptance or approval of the Work under inspection and does not relieve contractor from full compliance with contractual obligation.

Distribution:

- Employer's Representative Contractor (Original)
 Consultant Engineer
 AFG-RE Document Control AFG-RE PM

CONSULTANT/ENGINEER'S REPRESENTATIVE

SIGN Kalaiselvan Malaiappan DATE 16/03/2024



QUALITY DOCUMENTS



Wafatam Group Ltd. شركة الفاتم القابضة



WORK INSPECTION REQUEST (WIR)

Contract	DR068P01	Company	Contractor: AFE Contracting LLC Sub-Contractor: - Bombay Contracting LLC	IR No.	DFC-BOC-DR068P01-SJ-WIR-00009rev01	Date	12/03/24
To:	FACE ARCHITECTURE + DESIGN (Original)			cc.	AFG-RE Document Control (1 copy) AFG-RE Project Manager (1 copy)		

We give notice that the following work will be available for inspection:

- Elevation 4, Level 3-hole depth inspection.

See also Relevant Check lists attached
Inspection & Test Plan Reference:

Date & Time available for Inspection: 12-03-2024 & 12:00PM

Issued by [Name]

Signature:

MOHAMED KAMIL

Work to be Inspected:

Inspection request for installation of Level 1 Beam installation with Torque.

Discipline:

- Architectural Structural Mechanical Electrical Plumbing
 Interior Landscape Infrastructural Other (specify)

Engineer or Engineer's Representative Inspectors Comments:

Approval will be subject to the following conditions:

- Please ensure that the embedded depth aligns with the approved design calculations.
- Before installing the bolts, make sure the drilled holes are clean and free of dust. The chemical application should be applied as per the manufacturer's recommendations.
- The warranty must be in accordance with the project specifications.
- Approval does not excuse the contractor from complying with contractual terms, conditions, and specifications.
- Additionally, make sure that there are 7 to 8 threads visible after tightening the bolt.

At (time):

On (date):

Signed For

The above works have been inspected and the next operation may proceed subject to Inspection Status
Works rejected must be resubmitted for Inspection.

CONSULTANT / ENGINEER'S REPRESENTATIVE
DATE RECEIVED

SIGNED

RETURNED TO CONTRACTOR – INSPECTION STATUS

A: Work May Proceed	<input type="checkbox"/>	C: Revise and Resubmit Work may not Proceed	<input type="checkbox"/>
E: Work May Proceed subject to incorporation of changes indicated	<input checked="" type="checkbox"/>	D: Inspection not required.	<input type="checkbox"/>

IMPORTANT: Permission to proceed does not constitute acceptance or approval of the Work under inspection and does not relieve contractor from full compliance with contractual obligation.

Distribution:

- Employer's Representative Contractor (Original)
 Consultant Engineer
 AFG-RE Document Control AFG-RE PM

CONSULTANT/ENGINEER'S REPRESENTATIVE

SIGN Kaaiselvan Malaippan DATE 17/03/2024



QUALITY DOCUMENTS



Wafatam Group Ltd. | مجموعة الوفاة للتطوير العقاري



WORK INSPECTION REQUEST (WIR)

Contract	DR068P01	Company	Contractor: AFE Contracting LLC Sub-Contractor: - Bombay Contracting LLC	IR No.	DFC-BOC-DR068P01-SJ-WIR-000010-Rev01	Date	12/03/24
To:	FACE ARCHITECTURE + DESIGN (Original)		cc.	AFG-RE Document Control (1 copy) AFG-RE Project Manager (1 copy)			

We give notice that the following work will be available for inspection:

- Elevation 2, Level 3 Beam with Torque test.

See also Relevant Check lists attached

Inspection & Test Plan Reference: AFS-BOC-DR068P01-SJ-MIR-000011 & AFS-BOC-DR068P01-SJ-MIR-000012-Rev01
Date & Time available for inspection: 12-03-2024 & 10:00 AM

Issued by [Name]

Signature:

MOHAMED KAMIL

Work to be inspected:

Inspection request for installation of Level 1 Beam installation with Torque.

Discipline:

- Architectural Structural Mechanical Electrical Plumbing
 Interior Landscape Infrastructural Other (specify)

Engineer or Engineer's Representative Inspectors Comments:

Approval will be subject to the following comments:

- Please ensure that the anchor embedded depth meets the approved design calculations. Additionally, make sure that there are 7 to 8 threads visible after tightening the bolt.
- Please attach the TDS for the bolt and the site images, for the record.
- The warranty must be in accordance with the project specifications.
- Approval does not excuse the contractor from complying with contractual terms, conditions, and specifications.

At (time):

On (date):

Signed For

The above works have been inspected and the next operation may proceed subject to Inspection Status
Works rejected must be resubmitted for inspection.

CONSULTANT / ENGINEER'S REPRESENTATIVE
DATE RECEIVED

SIGNED

RETURNED TO CONTRACTOR – INSPECTION STATUS

A: Work May Proceed	<input type="checkbox"/>	C: Revise and Resubmit Work may not Proceed	<input type="checkbox"/>
B: Work May Proceed subject to incorporation of changes indicated	<input checked="" type="checkbox"/>	D: Inspection not required.	<input type="checkbox"/>

IMPORTANT: Permission to proceed does not constitute acceptance or approval of the Work under inspection and does not relieve contractor from full compliance with contractual obligation

CONSULTANT/ENGINEER'S REPRESENTATIVE

SIGN Kalaiselvan Malaiappan DATE 16/03/2024



QUALITY DOCUMENTS



Al Ruaya Al Mutakmilah Metal Const.Ind.LLC



WORK INSPECTION REQUEST (WIR)

Contract	DR069P01	Company	Contractor: AFE Contracting LLC Sub-Contractor: - Bombay Contracting LLC	IR No.	DFC-BOC-DR069P01-SJ-WIR-000011-Rev01	Date	19/03/24
To:	FACE ARCHITECTURE + DESIGN (Original)		cc.	AFG-RE Document Control (1 copy) AFG-RE Project Manager (1 copy)			

We give notice that the following work will be available for inspection:

- Elevation 4, Level 3 Beam with Torque test.

See also Relevant Check lists attached

Inspection & Test Plan Reference: AFS-BOC-DR069P01-SJ-MIR-000017 & AFS-BOC-DR069P01-SJ-MIR-000018-Rev01

Date & Time available for inspection: 20-03-2024 & 11:00 AM

Issued by [Name]

MOHAMED KAMIL

Signature:



Work to be inspected:

Inspection request for installation of Level 1 Beam installation with Torque.

Discipline:

- Architectural Structural Mechanical Electrical Plumbing
 Interior Landscape Infrastructural Other (specify)

Engineer or Engineer's Representative Inspectors Comments:

Approval will be subject to the following comments:

- Please ensure that the anchor embedded depth meets the approved design calculations. Additionally, make sure that there are 7 to 8 threads visible after tightening the bolt.
- Please attach the TDS for the bolt, for the record.
- The warranty must be in accordance with the project specifications.
- Approval does not excuse the contractor from complying with contractual terms, conditions, and specifications.

At (time):

On (date):

Signed For

The above works have been inspected and the next operation may proceed subject to inspection Status
Works rejected must be resubmitted for inspection.

CONSULTANT / ENGINEER'S REPRESENTATIVE
DATE RECEIVED

SIGNED

RETURNED TO CONTRACTOR – INSPECTION STATUS

A: Work May Proceed	<input type="checkbox"/>	C: Revise and Resubmit Work may not Proceed	<input type="checkbox"/>
B: Work May Proceed subject to incorporation of changes indicated	<input checked="" type="checkbox"/>	D: Inspection not required.	<input type="checkbox"/>

IMPORTANT: Permission to proceed does not constitute acceptance or approval of the Work under inspection and does not relieve contractor from full compliance with contractual obligation

CONSULTANT/ENGINEER'S REPRESENTATIVE

SIGN Kalaiselvan Malaiappan DATE 21/03/2024



QUALITY DOCUMENTS

 <p>AL ASHRAM CONTRACTING L.L.C. Contractor: Al Ashram Contracting LLC</p>	<p>Inspection Request no: P236-MIR-STR-865 R01</p>
	<p>Date: 29.05.2024</p>

Material Inspection Request

Material Inspection Request for

1. Decking Sheet GI 0.9 mm thk- Mill Finish as per ASTM A653 Width 914 mm, Length 7000 mm (5 Nos)
2. Decking Sheet GI 0.9 mm thk- Mill Finish as per ASTM A653 Width 914 mm, Length 9000 mm (15 Nos.)
3. Decking Sheet GI 0.9 mm thk- Mill Finish as per ASTM A653 Width 914 mm, Length 10000 mm (13 Nos.) with Delivery Note No. 64684

Area of Application: Structure elements -Decking Slab

Drawing Ref.: _____ B.O.Q Ref: _____

NAGA - AAN	
Distribution	
LA	✓
K1	✓
K2	✓
RC	✓



2. Section

- | | | |
|----------------------------------------------|------------------------------------------------|--------------------------------------------|
| <input type="checkbox"/> Reinforced Concrete | <input type="checkbox"/> Paints | <input type="checkbox"/> Mechanical |
| <input type="checkbox"/> Plain Concrete | <input type="checkbox"/> Marbles | <input type="checkbox"/> Electrical |
| <input type="checkbox"/> Water Proofing | <input type="checkbox"/> Wooden Doors | <input checked="" type="checkbox"/> Others |
| <input type="checkbox"/> Masonry | <input type="checkbox"/> Alum. Doors & Windows | _____ |
| <input type="checkbox"/> Plaster | <input type="checkbox"/> Tiles | _____ |

Inspection Date: 30.05.2024
Inspection Time: 10:00 AM

We certify that the above required inspection has been coordinated and checked with our Quality Control team

Submitted by Q/C: _____ Signature _____

3. ENGINEER's COMMENT:

- Provided test certificates by the Contractor as herewith enclosed are noted for information and records.
- Contractor to properly identify these particular steel elements as per enclosed delivery note in the approved shop drawings for proper verifications and the same to be further checked via IR after site installations thereof for necessary work approvals.

The inspection is

- Approved Approved as Noted Re-submit for Inspection Reject

Signature: *ptabil*

DATE: 30/05/2024

Approval shall not relieve Contractor of any of his obligations under the Contract or constitute authorization of any change to Contract Documents or variation to the works. Contractor is responsible for dimensions, quantities and coordination with other trades.



QUALITY DOCUMENTS

 <p>Contractor: Al Astarah Contracting LLC</p> <p>P-236, (20-001-DXB) (B+G+1+R) Residential Villa for Mr. Adil Allana on Plot No. 3672530, Dubai, UAE</p>	Inspection Request no: P236-MIR-STR-866 R01
	Date: 29.05.2024

Material Inspection Request

Material Inspection Request for - **COLUMNS**
1C8, 1C11, 1C7, 1C18, 1C14, 1C17, 1C10, 1C9, 1C16, 1C13, 1C15, 1C8, 1C5 & 1C12 with Delivery Note no. 64685 (14 Nos)

Area of Application: Structure elements -Columns

Drawing Ref.: _____ B.O.Q Ref.: _____



2. Section

- | | | |
|----------------------------------------------|------------------------------------------------|--------------------------------------------|
| <input type="checkbox"/> Reinforced Concrete | <input type="checkbox"/> Paints | <input type="checkbox"/> Mechanical |
| <input type="checkbox"/> Plain Concrete | <input type="checkbox"/> Marbles | <input type="checkbox"/> Electrical |
| <input type="checkbox"/> Water Proofing | <input type="checkbox"/> Wooden Doors | <input checked="" type="checkbox"/> Others |
| <input type="checkbox"/> Masonry | <input type="checkbox"/> Alum. Doors & Windows | |
| <input type="checkbox"/> Plaster | <input type="checkbox"/> Tiles | |

Inspection Date: 30.05.2024
Inspection Time: 10:00 AM



We certify that the above required inspection has been coordinated and checked with our Quality Control team

Submitted by Q/C: *[Signature]* Signature: *[Signature]*

3. ENGINEER'S COMMENT:

- Provided test certificates by the Contractor as herewith enclosed are noted for information and records.
- Contractor to properly identify these particular steel elements as per enclosed delivery note in the approved shop drawings for proper verifications and the same to be further checked via IR after site installations thereof for necessary work approvals.

The Inspection is

- Approved Approved as Noted Re-submit for Inspection Reject

Signature: *[Signature]* DATE: 30/05/2024

Approval shall not relieve Contractor of any of his obligations under the Contract or constitute authorization of any change to Contract Documents or variation to the works. Contractor is responsible for dimensions, quantities and coordination with other trades.



QUALITY DOCUMENTS

 NAGA CONTRACTORS P.O. Box 212121, Dubai, UAE Contractor: Al Asram Contracting LLC	Inspection Request no: P236-MIR-STR-868 R01
	Date: 29.05.2024

Material Inspection Request

Material Inspection Request for -
 1. RADIUS BEAM (1B14, 1B34, 1B11, 1B38, 1B12, 1B42, 1B29, 1B40, 1B28, 1B34, 1B36, 1B31, 1B39)
 2. BRACKET 1B43
 3. SHS TUBE 60X60X4mm - Length-6000 mm
 with Delivery Note no. 64687

Area of Application: Structure elements -Beams

Drawing Ref.: _____ B.O.Q Ref: _____

NAGA - JAN	
Approval System Plan	
Distribution	
No.	Signature
1A	
1B	
1C	
1D	
1E	



2. Section

- | | | |
|----------------------------------------------|------------------------------------------------|---------------------------------------------|
| <input type="checkbox"/> Reinforced Concrete | <input type="checkbox"/> Paints | <input type="checkbox"/> Mechanical |
| <input type="checkbox"/> Plain Concrete | <input type="checkbox"/> Marbles | <input type="checkbox"/> Electrical |
| <input type="checkbox"/> Water Proofing | <input type="checkbox"/> Wooden Doors | <input checked="" type="checkbox"/> Others: |
| <input type="checkbox"/> Masonry | <input type="checkbox"/> Alum. Doors & Windows | _____ |
| <input type="checkbox"/> Plaster | <input type="checkbox"/> Tiles | _____ |

Inspection Date:
 Inspection Time:



We certify that the above required inspection has been coordinated and checked with our Quality Control team
 Submitted by Q/C: _____ Signature _____

3. ENGINEER's COMMENT:

- Provided test certificates by the Contractor as herewith enclosed are noted for information and records.
- Contractor to properly identify these particular steel elements as per enclosed delivery note in the approved shop drawings for proper verifications and the same to be further checked via IR after site installations thereof for necessary work approvals.

The inspection is

- Approved
 Approved as Noted
 Re-submit for Inspection
 Reject

Signature: 

DATE: 30/05/2024

Approval shall not relieve Contractor of any of his obligations under the Contract or constitute authorization of any change to Contract Documents or variation to the works. Contractor is responsible for dimensions, quantities and coordination with other trades.



QUALITY DOCUMENTS

 Contractor: Al Ashram Contracting LLC P-236. (20-001-DXB).(B+G+1+R) Residential Villa for Mr. Adil Allana on Plot No. 3672530, Dubai, UAE	Inspection Request no: P236-WIR-STR-915 R02
	Date: 24.05.2024

Work Inspection Request

Inspection request to witness the third party welding test for steel structure including panoramic lift & link bridge from ground to roof level.

Area of Application: Panoramic Lift & Link Bridge (GF to RF)

No	For	By	Signature
1A			
1B			
1C			
1D			
1E			
1F			
1G			
1H			
1I			
1J			
1K			
1L			
1M			
1N			
1O			
1P			
1Q			
1R			
1S			
1T			
1U			
1V			
1W			
1X			
1Y			
1Z			



Drawing Ref: _____

B.O.Q Ref: _____

2. Section

- | | | |
|----------------------------------------------|------------------------------------------------|-------------------------------------|
| <input type="checkbox"/> Reinforced Concrete | <input type="checkbox"/> Paints | <input type="checkbox"/> Mechanical |
| <input type="checkbox"/> Plain Concrete | <input type="checkbox"/> Marbles | <input type="checkbox"/> Electrical |
| <input type="checkbox"/> Water Proofing | <input type="checkbox"/> Wooden Doors | <input type="checkbox"/> Others |
| <input type="checkbox"/> Masonry | <input type="checkbox"/> Alum. Doors & Windows | |
| <input type="checkbox"/> Plaster | <input type="checkbox"/> Tiles | |

Inspection Date:
 Inspection Time:



We certify that the above required inspection has been coordinated and checked with our Quality Control team
 Submitted by Q/C: Signature

3. ENGINEER's COMMENT:

- Third-party welding retests witnessed. Photos enclosed. Contractor to submit the official test results thereof for Engineer's review & approval & for records purposes.

The inspection is

- Approved Approved as Noted Re-submit for inspection Reject

Signature:

DATE: **25/05/2024**

Approval shall not relieve Contractor of any of his obligations under the Contract or constitute authorization of any change to Contract Documents or variation to the works. Contractor is responsible for dimensions, quantities and coordination with other trades.

8. TEST CERTIFICATES





TEST CERTIFICATES



شركة خدمات المساندة الصناعية المحدودة ذ.م.م
INDUSTRIAL SUPPORT SERVICES COMPANY LIMITED L.L.C

MAGNETIC PARTICLE TESTING REPORT

Examination Date	19/04/2024	Report No.	JR-24-1078-OP-RPT-01
Client	AL RUAYA AL MUTAKAMILAH METAL CONST.IND LLC/INNA LARINA,IGOR FEDOROV		
Project/Contract No.	NA		
Job Location	SHARJAH-SAJJA		
Procedure No.	QC-PRC-05 Rev 06	Job No.	B0113
Specification	AWS D1.1	P.O. No.	NA
Acceptance Criteria	AWS D1.1	Page No.	01 OF 01

Dwg/ISO Number	NA	Equipment Make-Model	MY-2
Component Description	L-100 VILLA	Equipment Sr. No.	184124
Material Type	CARBON STEEL	Field Indicator	PI-GUAGE
Job Dimension	NA	Light Source	DAY LIGHT
Welding Type & Process	GTAW+SMAW	Light Intensity	>1076 LUX
Heat Treatment	BSR <input type="checkbox"/> ASR <input type="checkbox"/> N/A <input checked="" type="checkbox"/>	Light Meter	SPECTROLINE / DSE-100X/1095381
Area of Interest	BASE METAL+WELD	Technique	PERMANENT YOKE
Surface Condition	AS CLEANED	Magnetizing Method	LONGITUDINAL
Job Temperature	30°C	Method of Examination	WET METHOD
Environment Condition	NORMAL	Current Type/Ampere	NA
Pre-cleaning Method	CLEANER	Lifting Block	18.1 Kg
Post-cleaning Method	NA	De-magnetization	NA

Cleaner/Remover:	Background:	Detecting Media
Type: MAGNAFLUX	Type: MAGNAFLUX	Type: MAGNAFLUX
Batch No.:221104	Batch No.: 230505	Batch No.:230107

RECORDING & EVALUATION

Sl no.	Item Description	ASSEMBLY MARK NO.	Nature of Indication	Accept /Reject
1	L-100 VILLA	M3	NO INDICATION FOUND	ACCEPT
2		B17	NO INDICATION FOUND	ACCEPT
3		JB9	NO INDICATION FOUND	ACCEPT

REMARKS:

- 10% MPI CARRIED OUT ON ALL WELD AREA.

RESULT:

- NO RELEVANT INDICATION WAS OBSERVED AT THE TIME OF INSPECTION
- FOUND ACCEPTABLE AS PER SPECIFICATION.

Inspector: NDT:MPT Level II SHEIKH FAREETH 	Verified By (ISSCO) JITHUN PHILIP 	Client/Contractor Name & Signature	TPI / AI Name & Signature
---------------------------------------------------	------------------------------------------	-------------------------------------------	----------------------------------

Form No: QC-PRC-05-F1 01

The report relates to the sample tested and shall not be reproduced except with prior written permission from ISSCO
This report is not valid without ISSCO testing report Stamp & Signature



ICAD III Warehouse C-2, Room No.05, P.O. Box 73079, Abu Dhabi, United Arab Emirates.
Tel.: +971 2 555 9409. +971 2 554 7048 Fax: +971 2 554 7049
E-mail: issco@emirates.net.ae . operations@issco.ae



QUALITY DOCUMENTS



شركة خدمات المساندة الصناعية المحدودة ذ.م.م
INDUSTRIAL SUPPORT SERVICES COMPANY LIMITED L.L.C

MAGNETIC PARTICLE TESTING REPORT

Examination Date:	19/04/2024	Report No.:	JR-24-107B-OP-RPT-02
Client:	AL RUAYA AL MUTAKAMILAH METAL CONST.IND.LLC /UM AL SHEIF 367		
Project/Contract No.:	NA		
Job Location:	SHARJAH-SAJJA		
Procedure No.:	QC-PRC-05 Rev 06	Job No.:	I0102
Specification:	AWS D1.1	P.O. No.:	NA
Acceptance Criteria:	AWS D1.1	Page No.:	01 OF 01

Drg/ISO Number	NA	Equipment Make-Model	MY-2
Component Description	ADIL VILLA - LIBRARY	Equipment Sr. No.	184124
Material Type	CARBON STEEL	Field Indicator	PI-GUAGE
Job Dimension	NA	Light Source	DAY LIGHT
Welding Type & Process	GTAW+SMAW	Light Intensity	>1076 LUX
Heat Treatment	BSR <input type="checkbox"/> ASR <input type="checkbox"/> N/A <input checked="" type="checkbox"/>	Light Meter	SPECTROLINE / DSE-100X/1095381
Area of Interest	BASE METAL +WELD	Technique	PERMANENT YOKE
Surface Condition	AS CLEANED	Magnetizing Method	LONGTUDINAL
Job Temperature	30°C	Method of Examination	WET METHOD
Environment Condition	NORMAL	Current Type/Ampere	NA
Pre-cleaning Method	CLEANER	Lifting Block	18.1 Kg
Post-cleaning Method	NA	De-magnetization	NA

Cleaner/Remover:	Background:	Detecting Media
Type: MAGNAFLUX	Type: MAGNAFLUX	Type: MAGNAFLUX
Batch No.:221104	Batch No.: 230505	Batch No.:230107

RECORDING & EVALUATION

Sl no.	Item Description	ASSEMBLY MARK NO.	Nature of Indication	Accept /Reject
1	ADIL VILLA LIBRARY	4B9	NO INDICATION FOUND	ACCEPT
2		4B31	NO INDICATION FOUND	ACCEPT
3		4C1	NO INDICATION FOUND	ACCEPT

REMARKS:

> 10% MPI CARRIED OUT ON ALL WELD AREA.

RESULT:

> NO RELEVANT INDICATION WAS OBSERVED AT THE TIME OF INSPECTION
> FOUND ACCEPTABLE AS PER SPECIFICATION.

Inspector - NDT MPT Level II SHEIK FARBIETH Name & Signature	Verified By (ISSCO) JITHUN PHILIP Name & Signature	Client/Contractor Name & Signature	TPI / AI Name & Signature
------------------------------------------------------------------------	--------------------------------------------------------------	-------------------------------------------	----------------------------------

Form No: QC-PRC-05-F1 01

The report relates to the sample tested and shall not be reproduced except with prior written permission from ISSCO
This report is not valid without ISSCO testing report Stamp & Signature



ICAD II - Warehouse G-2, Slove No.95, P.O. Box 73079, Abu Dhabi, United Arab Emirates
Tel. +971 2 555 9409,+971 2 554 7048 Fax: +971 2 554 7049
E-mail: issco@emirates.net.ae, operations@issco.ae



QUALITY DOCUMENTS



شركة خدمات المساندة الصناعية المحدودة ذ.م.م
INDUSTRIAL SUPPORT SERVICES COMPANY LIMITED L.L.C

MAGNETIC PARTICLE TESTING REPORT

Examination Date	19/04/2024	Report No.	JR-24-1078-OP-RPT-03
Client	AL RUAYA AL MUTAKAMILAH METAL CONST.IND LLC /UM AL SHEIF 367		
Project/Contract No.	NA		
Job Location	SHARJAH-SAJJA		
Procedure No.	QC-PRC-05 Rev 06	Job No.	10102
Specification	AWS D1.1	P.O. No.	NA
Acceptance Criteria	AWS D1.1	Page No.	01 OF 01

Drg/ISO Number	NA	Equipment Make-Model	MY-2
Component Description	ADIL VILLA - CANOPY	Equipment Sr. No.	184124
Material Type	CARBON STEEL	Field Indicator	PI-GUAGE
Job Dimension	NA	Light Source	DAY LIGHT
Welding Type & Process	GTAW+SMAW	Light Intensity	>1076 LUX
Heat Treatment	BSR <input type="checkbox"/> ASR <input type="checkbox"/> N/A <input checked="" type="checkbox"/>	Light Meter	SPECTROLINE / DSE-100X/1095381
Area of Interest	BASE METAL +WELD	Technique	PERMANENT YOKE
Surface Condition	AS CLEANED	Magnetizing Method	LONGITUDINAL
Job Temperature	30°C	Method of Examination	WET METHOD
Environment Condition	NORMAL	Current Type/Ampere	NA
Pre-cleaning Method	CLEANER	Lifting Block	18.1 Kg
Post-cleaning Method	NA	De-magnetization	NA

Cleaner/Remover:	Background:	Detecting Media
Type: MAGNAFLUX	Type: MAGNAFLUX	Type: MAGNAFLUX
Batch No.:221104	Batch No.: 230505	Batch No.:230107

RECORDING & EVALUATION

Sl no.	Item Description	ASSEMBLY MARK NO.	Nature of Indication	Accept /Reject
1	ADIL VILLA CANOPY	5B8	NO INDICATION FOUND	ACCEPT
2		5C3	NO INDICATION FOUND	ACCEPT
3		5FR1	NO INDICATION FOUND	ACCEPT

REMARKS:

- > 10% MPI CARRIED OUT ON ALL WELD AREA.

RESULT:

- > NO RELEVANT INDICATION WAS OBSERVED AT THE TIME OF INSPECTION
- > FOUND ACCEPTABLE AS PER SPECIFICATION.

Inspector - NDT MPT Level II SHEIK FAREETH	Verified By (ISSCO) JITHIN PHILIP	Client/Contractor	TPI / AI
Name & Signature	Name & Signature	Name & Signature	Name & Signature

Form No: QC-PRC-05-F1 01

The report relates to the sample tested and shall not be reproduced except with prior written permission from ISSCO
This report is not valid without ISSCO testing report Stamp & Signature.



ICAD II - Warehouse C-2, Store No.06, P.O. Box 73079, Abu Dhabi, United Arab Emirates
Tel: +971 2 558 9409, +971 2 554 7048 Fax: +971 2 554 7049
E-mail: issco@emirates.net.ae, operations@issco.ae



QUALITY DOCUMENTS

fischer FZE
PO Box 261736
Jebel Ali Freezone
Dubai
UNITED ARAB EMIRATES

Tel: +971 4 8837477
Fax: +971 4 8837478
technical@fischer.ae
www.fischer.ae



PULL OUT TEST REPORT

Test Report	Test date:	16.05.2024	Ref. No:	FFL20240516-AG-LINK BRIDGE-FISEMPLUS WITH M20X275-R0
Fischer Representative:	ANTO GOMEZ		050 554 3223	
Test requested by:	BOMBAY CONTRACTING COMPANY.			
Contact:	Mr. THANGARAJ	0527809912	Mr. VIJEESH- 0509205519	
Fixing(s) tested:	FIS EM PLUS WITH M20X275			
Application:	LINK BRIDGE CONNECTION WITH CONCRETE			
Project:	P-236(20-001-DXB).(B+G+1+R)RESIDENTIAL VILLA FOR MR.ALLANA			
Client:	MR. ADIL ALLANA			
Consultant:	NAGA ARCHITECTS			
Main Contractor:	AL ASHRAM CONTRACTING LLC			
SUB contractor:	INVENTURE METAL PRODUCTS INDUSTRIES LLC			
contractor contact:	Mr. VIJEESH- 0509205519			
Circulation:	From FISCHER to BCC to IMPI to AAC to NAGA			

SUBSTRATE

Substrate:	CONCRETE		
Substrate thickness:	N/A	Compressive strength: N/A	
Block dimensions:	N/A		
Building materials to be bridged:	N/A	Thickness: N/A	

FIXING INSTALLATION DETAILS

Drill type:	CONCRETE DRILL BIT	Nominal drill diameter:	
Hammer drilling/ Coring	DIAMOND DRILLING	HAMMER DRILLING	X
Substrate temperature:	N/A	Drill hole condition: CLEAN	
Hole Cleaning Method:	STANDARD	Installation torque: NA	
Fixing installed by:	REPRESENTATIVE OF BCC		

TEST EQUIPMENT DETAILS

Test equipment used:	HYDRAJAWS PRESSURE GAUGE	Gauge range: 0 – 50kN
Serial No:	180615	Calibration Expiry Date: 12/11/2024

TEST WITNESSED BY

S.No	Name	Company	Signature
1	MS. ROSE EILEEN TABIL	NAGA ARCHITECTS	
2	MR. ARNOLD TAMPOY	AL ASHRAM CONT	
3	MR. VIJESH VIJAYAN	INVENTURE METAL	



QUALITY DOCUMENTS

fischer FZE
PO Box 261738
Jebel Ali Freezone
Dubai
UNITED ARAB EMIRATES

Tel: +971 4 8837477
Fax: +971 4 8837476
technical@fischer.ae
www.fischer.ae



PULL OUT TEST REPORT

TEST OBJECTIVE

Ultimate load test	<input type="checkbox"/>	Proof load test*	<input checked="" type="checkbox"/>	Recommended Load: M20-17.4kN.
Preliminary load test	<input type="checkbox"/>	Note: The required Proof load shall be specified by the Engineer responsible for the application.		

* In accordance to the latest CFA Guidance

Tests Results							
	Fixing Details	Embedment depth (mm)	distance from		Required load (mm)	Applied Load (kN)	Observation
			free edge (mm)	closed joint (mm)			
1	M20X275 WITH FIS EM+	200	-	-	17.5	26.9	No failure observed

Conclusion: Test Result is Okay.

1. Due to the complexity of building materials, tools, fixing elements and installation techniques, a comprehensive recommendation depends on full and detailed understanding of specific site conditions.
2. This report is a factual record of results observed and does not constitute an endorsement of the suitability of the product tested for the application concerned. This responsibility remains with the customer.
3. The test results shall be used only as a guide for assessment of suitability in other fixing locations.
4. The recommendation given can only be as accurate as the details given by you regarding the circumstances on site. Even when our advice is given in good faith they cannot be binding for this reason. Therefore, it is essential that you check if we have interpreted the information correctly concerning the information given by you regarding the data and the circumstances on site.
5. To calculate the allowable load resulting from these tests, appropriate safety factors must be applied.
6. Should any of the criteria stated in the test report or site condition change, please consult with Fischer Technical Department. (+971 48837477)

Test Report prepared by: ANTO GOMEZ

Technical review prepared by: SOUMEN CHOWDHURY

Date: 16/05/24

Date: 16/05/24

Signature





QUALITY DOCUMENTS

fischer FZE
PO Box 261738
Jebel Ali Freezone
Dubai
UNITED ARAB EMIRATES

Tel: +971 4 8837477
Fax: +971 4 8837476
technical@fischer.ae
www.fischer.ae



PULL OUT TEST REPORT

TEST OBJECTIVE

Ultimate load test	<input type="checkbox"/>	Proof load test*	<input checked="" type="checkbox"/>	Recommended Load: M20-17.4kN,
Preliminary load test	<input type="checkbox"/>	Note: The required Proof load shall be specified by the Engineer responsible for the application.		

* In accordance to the latest CFA Guidance

Tests Results							
	Fixing Details	Embedment depth (mm)	distance from		Required load (mm)	Applied Load (kN)	Observation
			free edge (mm)	closed joint (mm)			
1	M20X275 WITH FIS EM+	200	-	-	17.5	26.9	No failure observed

Conclusion: Test Result is Okay.

1. Due to the complexity of building materials, tools, fixing elements and installation techniques, a comprehensive recommendation depends on full and detailed understanding of specific site conditions.
2. This report is a factual record of results observed and does not constitute an endorsement of the suitability of the product tested for the application concerned. This responsibility remains with the customer.
3. The test results shall be used only as a guide for assessment of suitability in other fixing locations.
4. The recommendation given can only be as accurate as the details given by you regarding the circumstances on site. Even when our advice is given in good faith they cannot be binding for this reason. Therefore, it is essential that you check if we have interpreted the information correctly concerning the information given by you regarding the data and the circumstances on site.
5. To calculate the allowable load resulting from these tests, appropriate safety factors must be applied.
6. Should any of the criteria stated in the test report or site condition change, please consult with Fischer Technical Department. (+971 48837477)

Test Report prepared by: ANTO GOMEZ

Technical review prepared by: SOUMEN CHOWDHURY

Date: 16/05/24

Date: 16/05/24

Signature





QUALITY DOCUMENTS

fischer FZE
PO Box 261738
Jebel Ali Freezone
Dubai
UNITED ARAB EMIRATES

Tel: +971 4 9837477
Fax: +971 4 6637478
technical@fischer.ae
www.fischer.ae



PULL OUT TEST REPORT

Enclosed: Photos.....

Technical data.: DESIGN CALCULATION

Others: CALIBRATION CERTIFICATE

Pull out Test Picture

FIS EM+ WITH M20X275





QUALITY DOCUMENTS

BUREAULINK
SAFETY MANAGEMENT CONSULTANCY



Mr. Muhammad Imran Allah Bakhsh

(Employee of **Bombay Contracting L.L.C.**/ID No.)

Has successfully completed

**Mobile Elevating Work Platforms
3a**

With Practical Assessment

This is proof of IPAF training Course delivery

(Original certificate will be delivered once received from IPAF)

Certificate No : BLSMC/MEWP/0224-8056

Date of Issue: 07/02/2024

Date of Expiry: 06/04/2024

Knowledge saves lives!


Trainer Signatory & Company Seal





QUALITY DOCUMENTS

BUREAULINK
SAFETY MANAGEMENT CONSULTANCY



Mr. Arumyraj Sebasthiyan Sebasthiyan

(Employee of **Bombay Contracting L.L.C.** / ID No.)

Has successfully completed

**Mobile Elevating Work Platforms
3a**

With Practical Assessment

This is proof of IPAF training Course delivery

(Original certificate will be delivered once received from IPAF)

Certificate No : BLSMC/MEWP/0224-8057

Date of Issue: 07/02/2024

Date of Expiry: 06/04/2024

Knowledge saves lives!


Trainer Signatory & Company Seal





QUALITY DOCUMENTS

BUREAULINK
SAFETY MANAGEMENT CONSULTANCY



Mr. Rajendran Chinnadurai Chinnadurai

(Employee of **Bombay Contracting L.L.C.** / ID No.)

Has successfully completed

**Mobile Elevating Work Platforms
3a**

With Practical Assessment

This is proof of IPAF training Course delivery

(Original certificate will be delivered once received from IPAF)

Certificate No : BLSMC/MEWP/0224-8058

Date of Issue: 07/02/2024

Date of Expiry: 06/04/2024

Knowledge saves lives!


Trainer Signatory & Company Seal





QUALITY DOCUMENTS

BUREAULINK
SAFETY MANAGEMENT CONSULTANCY



Mr. Md Mijanur Rahman Md Akram Ali

(Employee of **Bompay Contracting L.L.C.**/ID No.)

Has successfully completed

**Mobile Elevating Work Platforms
3a**

With Practical Assessment

This is proof of IPAF training Course delivery

(Original certificate will be delivered once received from IPAF)

Certificate No : BLSMC/MEWP/0224-8039

Date of Issue: 07/02/2024

Date of Expiry: 06/04/2024

Knowledge saves lives!


Trainer Signatory & Company Seal





QUALITY DOCUMENTS

fischer FZE
PO Box 261738
Jebel Ali Freezone
Dubai
UNITED ARAB EMIRATES

Tel: +971 4 8837477
Fax: +971 4 8837476
technical@fischer.ae
www.fischer.ae



PULL OUT TEST REPORT

Test Report	Test date:	15.03.2024	Ref. No:	FFL20240116-AG-FAÇADE-FISEM+ WITH M20X200&M16X200-R0
Fischer Representative:	ANTO GOMEZ		050 554 3223	
Test requested by:	BOMBAY CONTRACTING COMPANY.			
Contact:	Mr. THANGARAJ	0527809912	Mr. KAMIL 0509218148	
Fixing(s) tested:	FIS EM PLUS WITH M20X200 & FIS EM PLUS WITH M16X200			
Application:	FACADE FIXING.			
Project:	FAÇADE REINSTATEMENT AT DUBAI FESTIVAL CITY MALL.			
Client:	AL FUTTAIM REAL ESTATE			
Consultant:	FACE DESIGN AND ARCHITECTS			
Main Contractor:	AL FUTTAIM ENGINEERING AND CONTRACTING			
SUB contractor:	BOMBAY CONTRACTING LLC			
contractor contact:	Mr. THANGARAJ	Mr. MOHAMMED KAMIL		
Circulation:	From FISCHER to BCC to AFEC to FACE			

SUBSTRATE

Substrate:	CONCRETE		
Substrate thickness:	N/A	Compressive strength: N/A	
Block dimensions:	N/A		
Building materials to be bridged:	N/A	Thickness: N/A	

FIXING INSTALLATION DETAILS

Drill type:	CONCRETE DRILL BIT	Nominal drill diameter: 10X25,12X25	
Hammer drilling/ Coring	DIAMOND DRILLING	HAMMER DRILLING	X
Substrate temperature:	N/A	Drill hole condition: CLEAN	
Hole Cleaning Method:	STANDARD	Installation torque: NA	
Fixing installed by:	REPRESENTATIVE OF BCC		

TEST EQUIPMENT DETAILS

Test equipment used:	HYDRAJAWS PRESSURE GAUGE	Gauge range: 0 – 50kN
Serial No:	180615	Calibration Expiry Date: 12/11/2024

TEST WITNESSED BY

S.No	Name	Company	Signature
1	MR. MOHAMMED KAMIL	BCC	
2	MR. RAJENDRAN	BCC	
3	MR. JITHIN JOSEPHS	AFEC	



QUALITY DOCUMENTS



الملكية لخدمات الكشف الصناعي والتدريب ذ.م.م. ROYAL FOR INDUSTRIAL INSPECTION & TRAINING SERVICE L.L.C.

Accredited By: IAS | Approved & Registered By: Abu Dhabi Municipality, Sharjah, ES&PC GROUP, HESAKHAA, ADWALA & QCC
Certified By: ISO 9001, 14001, 45001:2000

Welder Approval Test Certificate



Certificate No : RIITS/TR/2678-12
Job No : RIITS/N-691
Welder Name : Muhammad Arslan
Date of Test : 17 OCT 2023
Expiry Date : 16 OCT 2024
Company : AL RUAYA AL MUTAKAMILAH

Welding Variables(QW-350)	Actual Values	Range Qualified
Welding Process(QW-350 & QW-360)	GTAW & SMAW	GTAW & SMAW
Process type	MANUAL	MANUAL
Direct /remote control (QW-350)	N/A	N/A
Automatic Voltage Control	N/A	N/A
Automatic Joint Tracking	N/A	N/A
Backing (QW-402)(Metal, weld, flux)	N/A	N/A
Base Metal (QW-403) ASME P-No	P1	P1 Through P11
Thickness	6 MM	12 MM
Diameter Of Groove	4"	2 7/8" and over
Fillet	None	All
Filler Metal (QW-404)		
SFA Specification	E518 + E51	E518 + E51
F. NO.	F6 + F4	F6+ F4
Classification	ER-70S3 & E7018	ER-70S3 & E7018
Weld Deposit Thickness		
Groove	3mm GTAW + 3.02 SMAW	6 mm GTAW + 6.04mm SMAW
Fillet	None	All
Welding Positions (QW-405)	4G	All
Progression(Uphill/Downhill)	Uphill	Uphill
Backing Gas(QW-408)	None	None
Electric Characteristic(QW-409)	GTAW DCEN,SMAW DCEP	GTAW DCEN,SMAW DCEP
VISUAL EXAMINATION (QW-302.4)		ACCEPTABLE
RADIOGRAPHIC TEST RESULT (QW-302.4 & QW-305)		ACCEPTABLE
GUIDED BEND TEST (QW-160)		N/A
FILLER METAL TEST (QW-303-2)		NONE

We certify that the statement in this record are correct and the test welds are prepared ,welded and tested in accordance with the requirements of section ASME CODE 09



Approved By



QUALITY DOCUMENTS



الملكية لخدمات الكشف الصناعي والتدريب ذ.م.م. ROYAL
FOR INDUSTRIAL INSPECTION & TRAINING SERVICE I.L.C.

Accredited By: ES&E | Approved & Registered By: Abu Dhabi Municipality, Sharjah, ES&EC GROUP, HESAKSAL, ADWIA & QCC
| Certified By: ISO 9001, 14001, OHSAS 18001

Welder Approval Test Certificate



Certificate No : RIITS/TR/2079-12
Job No : RIITS/N-692
Welder Name : Lulu Madesiya
Date of Test : 17 OCT 2023
Expiry Date : 16 OCT 2024
Company : AL RUAYA AL MUTAKAMILAH

Welding Variables(QW-350)	Actual Values	Range Qualified
Welding Process(QW-350 & QW-360)	GTAW & SMAW	GTAW & SMAW
Process type	MANUAL	MANUAL
Direct /remote control (QW-350)	N/A	N/A
Automatic Voltage Control	N/A	N/A
Automatic Joint Tracking	N/A	N/A
Backing (QW-402)(Metal, weld, flux)	N/A	N/A
Base Metal (QW-403) ASME P-No	P1	P1 Through P11
Thickness	6 MM	12 MM
Diameter Of Groove	4"	2 7/8" and over
Fillet	None	All
Filler Metal (QW-404)		
SFA Specification	5.18 + 5.1	5.18 + 5.1
F. NO.	F6 + F4	F6+ F4
Classification	ER-70S3 & E7018	ER-70S3 & E7018
Weld Deposit Thickness		
Groove	3mm GTAW + 3.02 SMAW	6 mm GTAW + 6.04mm SMAW
Fillet	None	All
Welding Positions (QW-405)		
Progression(Uphill/Downhill)	Uphill	Uphill
Backing Gas(QW-408)	None	None
Electric Characteristic(QW-409)	GTAW DCEN,SMAW DCEP	GTAW DCEN,SNAW DCEP
VISUAL EXAMINATION (QW-302.4)		ACCEPTABLE
RADIOGRAPHIC TEST RESULT (QW-302.4 & QW-305)		ACCEPTABLE
GUIDED BEND TEST (QW-160)		N/A
FILLER METAL TEST (QW-303-2)		NONE

We certify that the statement in this record are correct and the test welds are prepared ,welded and tested in accordance with the requirements of section ASME CODE 09



(Handwritten signature)

Approved By

9. LIST OF MACHINERIES





LIST OF MACHINERIES

Machine Brand & Type: BODOR – CNC LASER CUTTING
Machine Capacity: 2.0 KW (MS-1 TO 16MM, ALU-1 TO 8MM AND SS-1 TO 5MM)

bodor
Dare to dream





LIST OF MACHINERIES

Machine Brand & Type: JYF – CNC HYDRAULIC PRESS BRAKE
Machine Capacity: 150 TON (6 AXIS – 3000MM)





LIST OF MACHINERIES

Machine Brand & Type: HYPER THERM – ASTRA CNC
Machine Capacity: POWERMAX 125 - (2M X 8M; MS – 4 TO 20MM AND SS 3 TO 15MM)





LIST OF MACHINERIES

Machine Brand & Type: ASTRA LASER WELDING
Machine Capacity: 2.0 KW - (MS - 1 TO 3MM AND SS 1 TO 2MM)





LIST OF MACHINERIES

Machine Brand & Type: ESAB – CADDY TIG 200i PRO WELDING
Machine Capacity: 220A



Machine Brand & Type: ESAB – ROGUE ET 200i PRO WELDING
Machine Capacity: 200A





LIST OF MACHINERIES

Machine Brand & Type: ESAB – FABRICATOR EM500I WELDING
Machine Capacity: 500A



Machine Brand & Type: ESAB – ROGUE ES 200I PRO WELDING
Machine Capacity: 200A





LIST OF MACHINERIES

Machine Brand & Type: Powder Tools
Machine Capacity: For Mild Steel up to 80 mm thickness.





LIST OF MACHINERIES

**LIST OF MACHINERIES & EQUIPMENT
(Steel & Aluminium Division)**

S.NO	ITEM DESCRIPTION	QTY
1	CNC HYDRAULIC PRESS BRAKE	1
2	CNC LASER CUTTING MACHINE	1
3	CNC PLASMA & OXY CUTTING MACHINE	1
4	PUG CUTTING MACHINE	1
5	LASER WELDING MACHINE	1
6	POWER GENERATOR	1
7	AIR COMPRESSORS 6	1
8	AIR COMPRESSORS 500 LITERS 1	1
9	ARC WELDING MACHINES 200A	10
10	BUFFING MACHINE 4 Inch	10
11	ARC WELDING MACHINES 400A	3
12	BUFFING MACHINE 5 Inch	3
13	BUFFING MACHINE 5 Inch	3
14	MIG-MAG WELDING MACHINE	5
15	CUTTING MACHINES 4 Inch	3
16	CUTTING MACHINES 14 Inch	3
17	DRILL MACHINES (MAGNETIC)	3
18	DRILL MACHINES (ORDINARY)	5
19	MAGNETIC CORE DRILL	1
20	GAS CUTTING SETS	2
21	HILTI DRILL MACHINES	1
22	HILTI PD 30 MEASURING DEVISE (DIGITAL)	1
23	SCREW MACHINES	5
24	WELDING MACHINE - (TIG 2000)	2
25	FORKLIFT	1
26	10 Ton Trailer	1
27	SCAFFOLDING (SET)	5
28	AIR RIVETER GUN	10

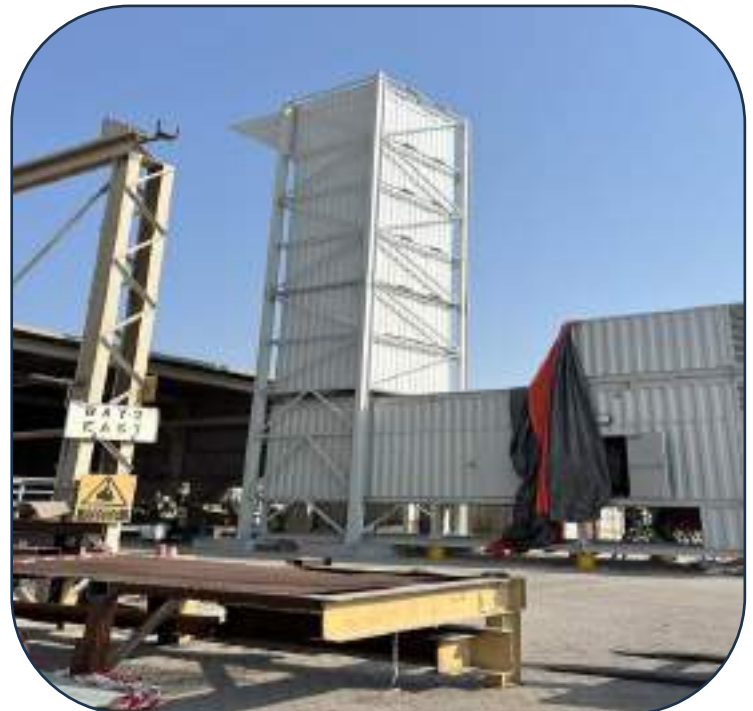
10. PROJECT PICTURES & DETAILS





PROJECT PICTURES & DETAILS

Project Name: Chimney - KSA



Project Abstract: Fabrication and Supply of Chimney

Scope of Work: Fabrication and Supply of Chimney

Location: KSA

Project Tonnage: 100 Ton

Project Value: 0.8 million

Client: BK Moduler

Consultant:

Main contractor:

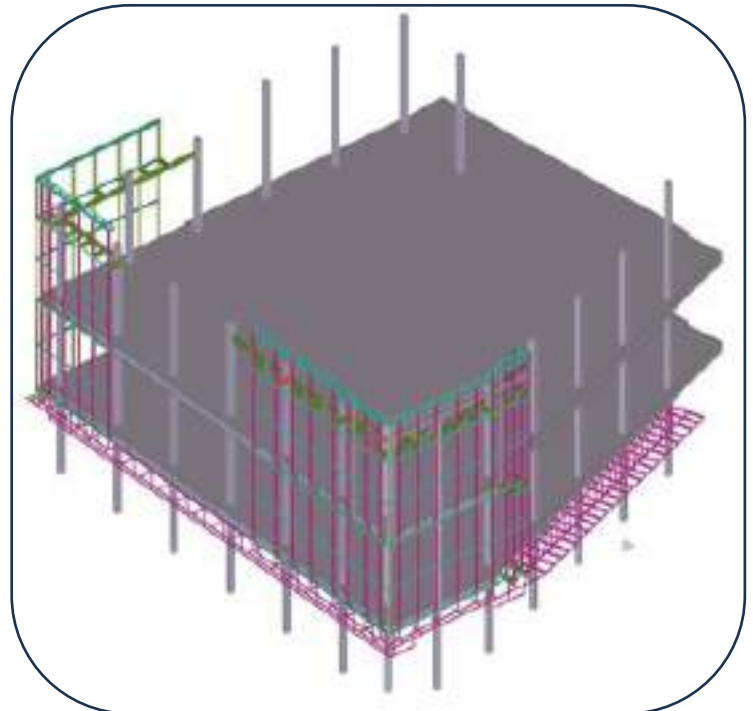
Subcontractor:

Project Duration: 1 Month



PROJECT PICTURES & DETAILS

Project Name: FACADE REINSTATEMENT AT DFC MALL



Project Abstract: Fabrication, Supply and installation

Scope of Work: Steel Structure for Canopy & Façade Support

Location: Dubai, UAE

Project Tonnage: 120 Ton

Project Value: 1.1 million

Client: Al Futtaim Real Estate

Consultant: FACE Architecture + Design

Main contractor: Al Futtaim Real Estate

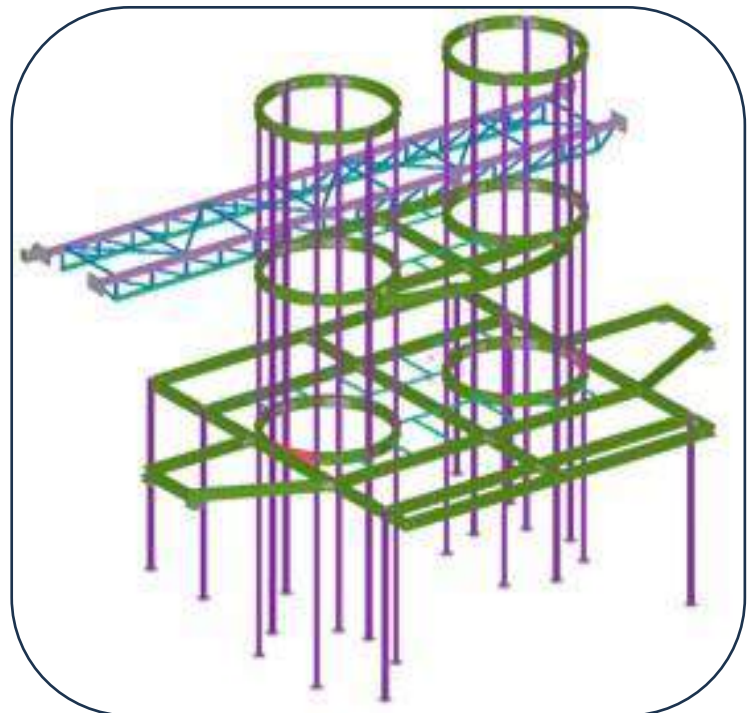
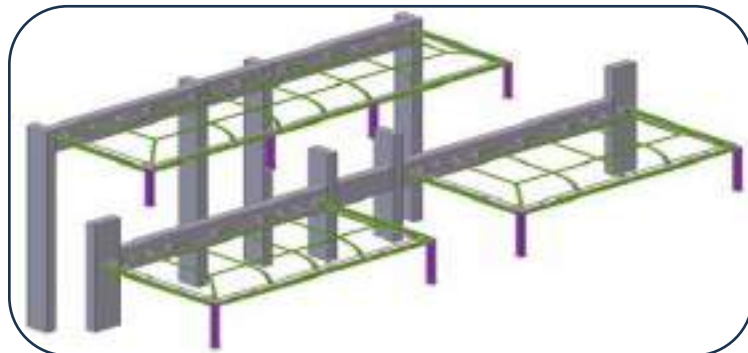
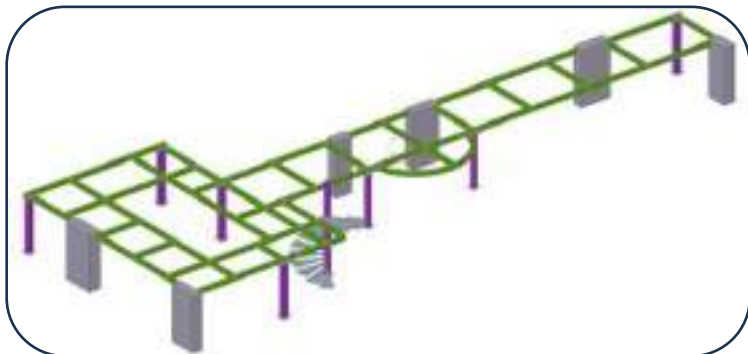
Subcontractor:

Project Duration: 2 Month



PROJECT PICTURES & DETAILS

Project Name: RES. VILLA FOR MR. ADIL (B+G+1+R)



Project Abstract: Fabrication, Supply and installation

Scope of Work: Steel Structure bridge, canopy and Staircase, Fire proofing, Decking

Location: Dubai, UAE

Project Tonnage: 72 Ton

Project Value: 0.9 million

Client: UM AL SHEIF 367

Consultant: Inventure Metal Products

Main contractor: Inventure Metal Products

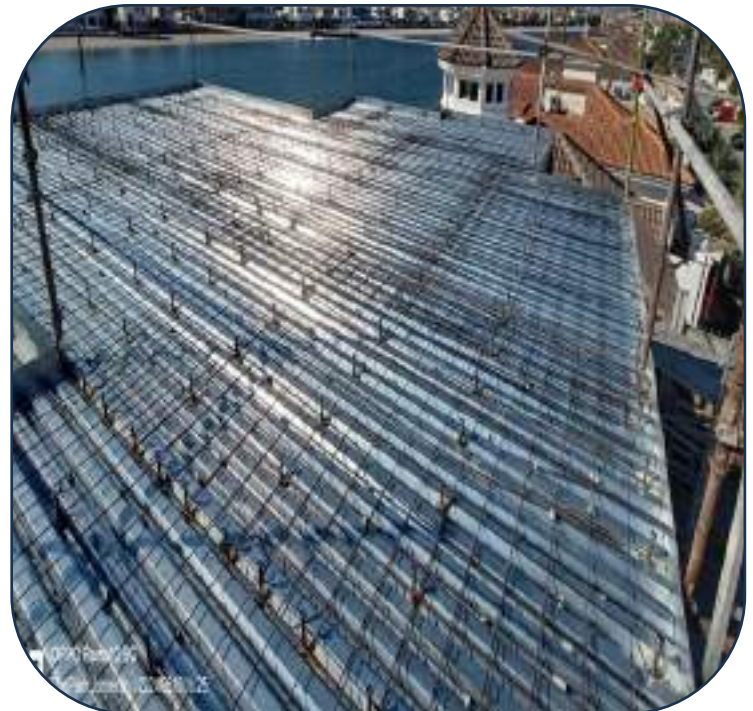
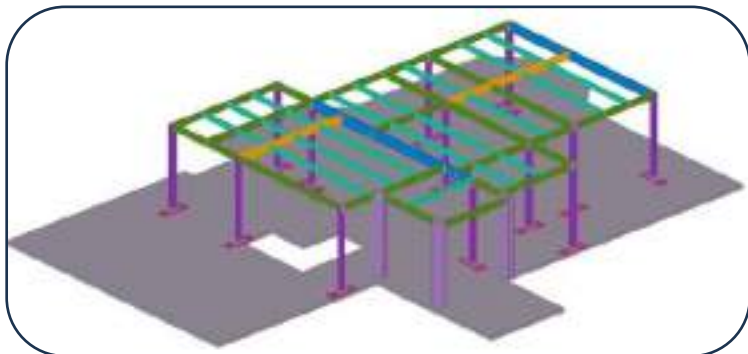
Subcontractor:

Project Duration: 3 Month



PROJECT PICTURES & DETAILS

Project Name: PROPOSED B+G+1+R RESIDENTIAL VILLA



Project Abstract: Fabrication, Supply and installation

Scope of Work: Steel Structure and metal Decking for villa extension

Location: Palm Jumeirah, Dubai, UAE

Project Tonnage: 8 Ton

Project Value: 0.13 million

Client: Inna Larina, Igor Fedorov

Consultant:

Main contractor: BOMBAY CONTRACTING LLC

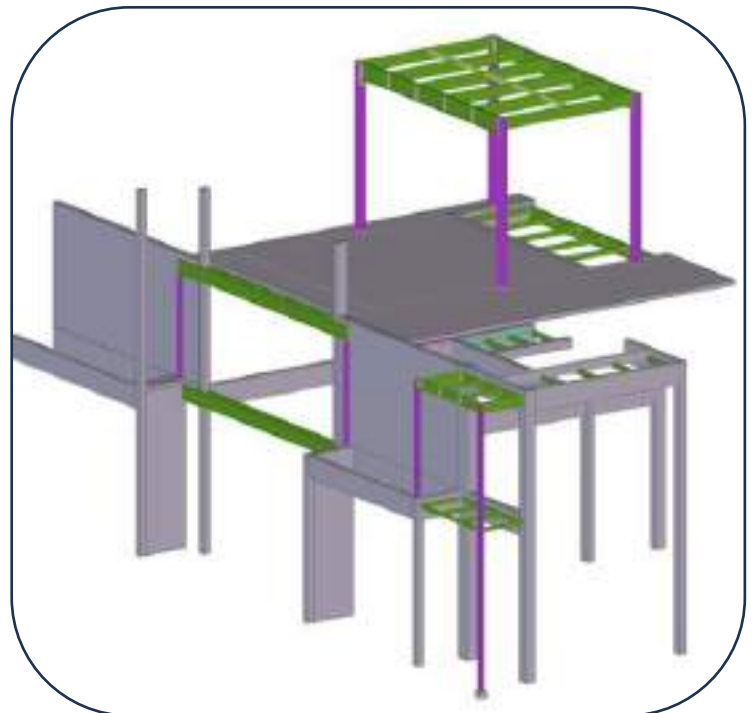
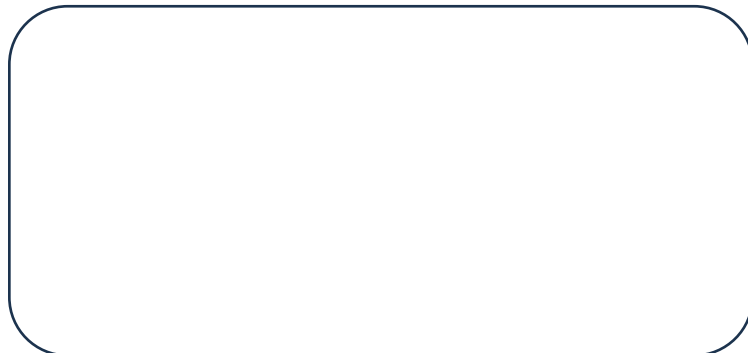
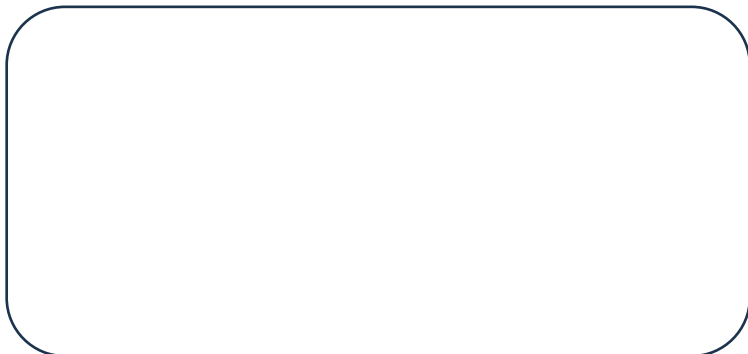
Subcontractor:

Project Duration: 0.5 Month



PROJECT PICTURES & DETAILS

Project Name: VILLA A55 PALM JUMEIRAH



Project Abstract: Fabrication, Supply and installation

Scope of Work: Steel Structure, Structural strengthen and metal decking .

Location: Palm Jumeirah, Dubai, UAE

Project Tonnage: 10 Ton

Project Value: 0.16 million

Client: MR. AHMAD ALI ALABDULLA ALANSARI

Consultant:

Main contractor: BOMBAY CONTRACTING LLC

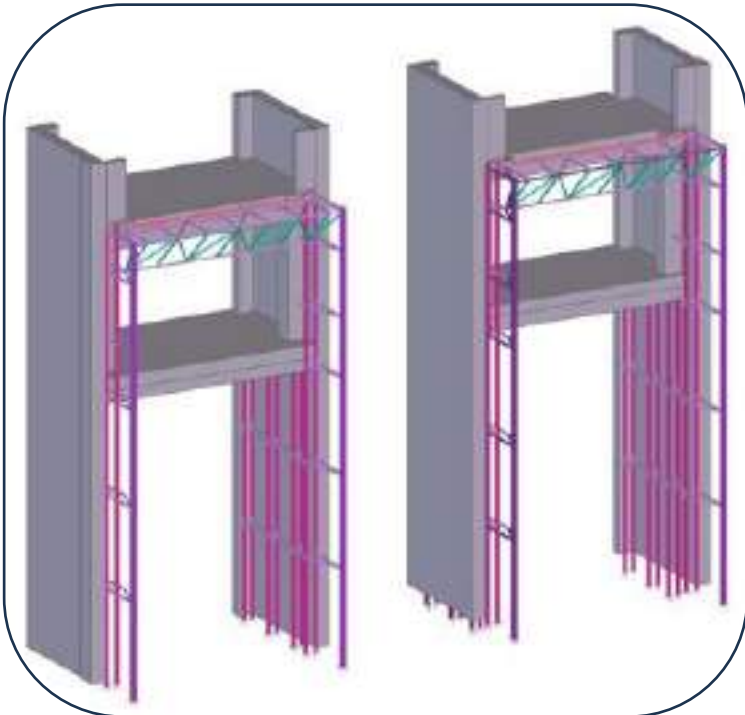
Subcontractor:

Project Duration: 0.5 Month



PROJECT PICTURES & DETAILS

Project Name: Dubai School, Al Barsha



Project Abstract: Fabrication, Supply and installation

Scope of Work: Structural Steel packages

Location: Al Barsha, Dubai, UAE

Project Tonnage: 120 Ton

Project Value: 1.5 million

Client: Dubai School, Al Barsha

Consultant: DAR AL OMRAN ARCHITECTURAL & ENGINEERING CONSULTANTS

Main contractor: Al Turath Engineering Consultants LLC

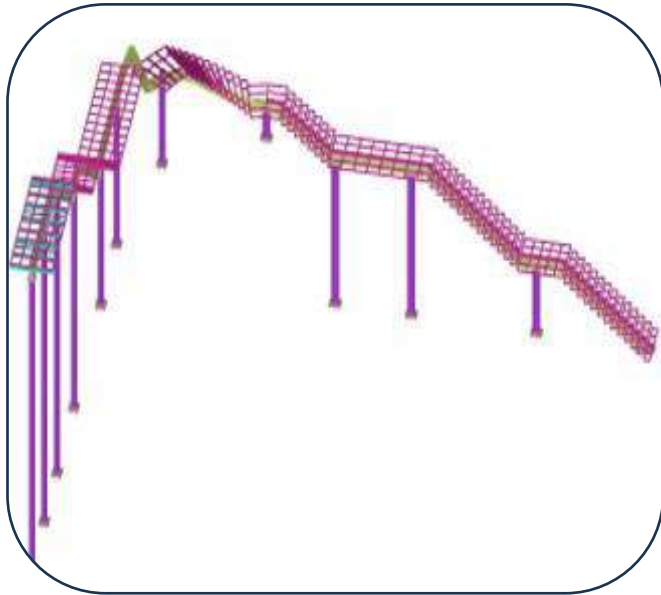
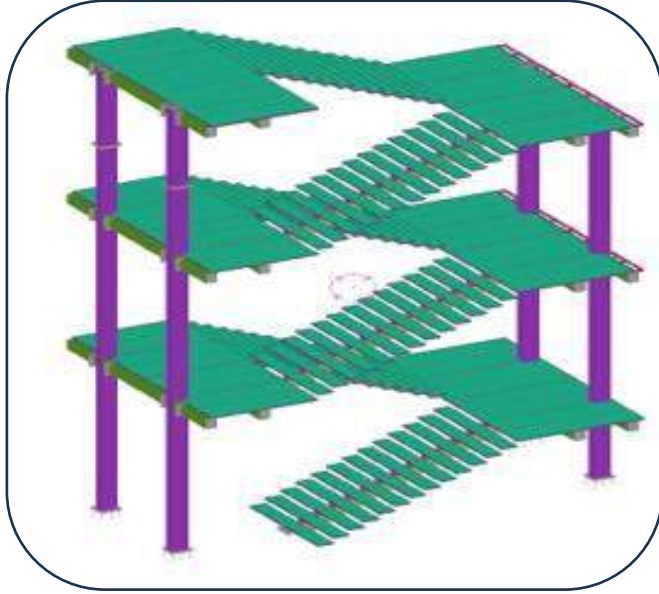
Subcontractor:

Project Duration: 4 Month



PROJECT PICTURES & DETAILS

Project Name: Dubai School, Al Barsha



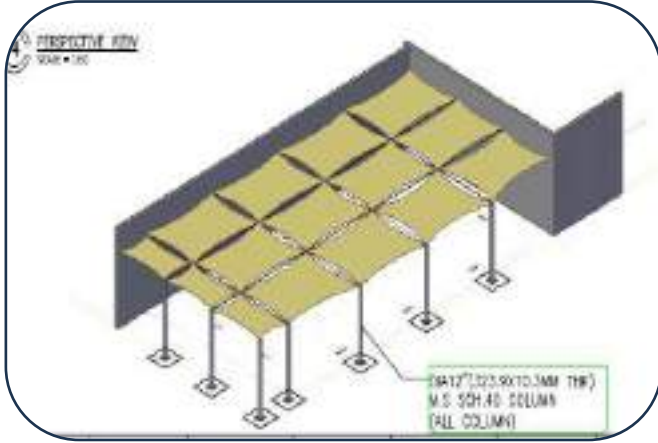
Project Abstract: Fabrication, Supply and installation
Steel Staircases, portal frame, façade
support Structure, Play area fabric
List of Scope: shade and GRC Support.

Client: Dubai School, Al Barsha



PROJECT PICTURES & DETAILS

Project Name: Dubai School, Al Barsha





PROJECT PICTURES & DETAILS

Project Name: Dubai School Site, Al Khawaneej 2



Project Abstract: Fabrication, Supply and installation

Scope of Work: Structural Steel packages

Location: Al Khawaneej 2, Dubai, UAE

Project Tonnage:

Project Value: 0.6 million

Client: Dubai School, Al Barsha

Consultant: National Engineering Bureau
Al Turath Engineering Consultants
Main contractor: LLC - Gems Technical Services Contracting LLC

Subcontractor:

Project Duration: 3 Month



PROJECT PICTURES & DETAILS

Project Name: Dubai School Site, Al Khawaneej 2



Project Abstract: Fabrication, Supply and installation EIFS System – Steel Stud wall, drop beam, substation LV room, skylight frame cladding etc.

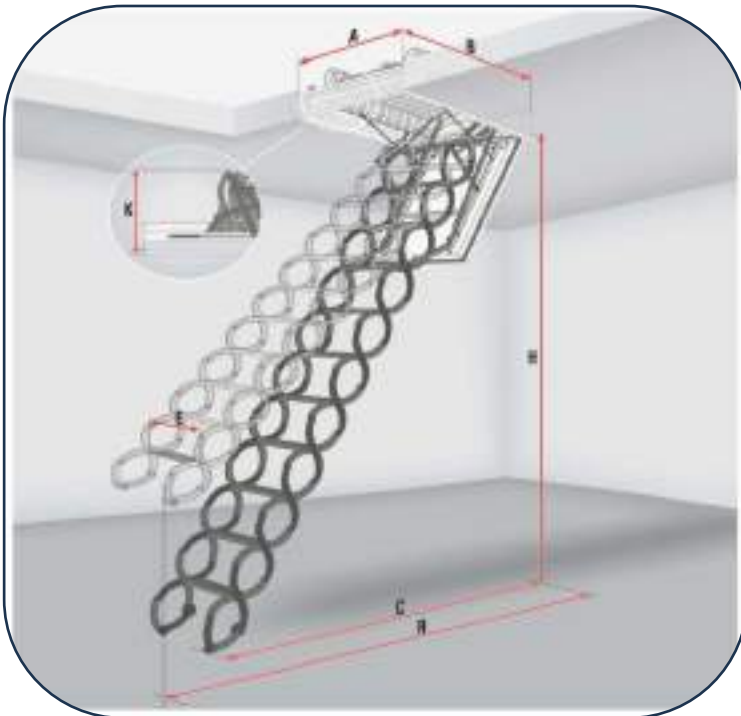
List of Scope:

Client: Dubai School, Al Khawaneej 2



PROJECT PICTURES & DETAILS

Project Name: Green Views 3 villa - Dubai



Project Abstract: Fabrication and Supply
Scope of Work: Aluminium Access Hatch with ladder
Location: DIC, Dubai, UAE
Project: 254 Villas
Project Value: 0.35 million

Client: Emaar Properties
Consultant: Pivot Engineering & General Contracting LLC
Main contractor: Dutco Tennant LLC
contractor: Dutco Tennant LLC
Project Duration: 2 Month



PROJECT PICTURES & DETAILS

Project Name: Jubail island Abu Dhabi



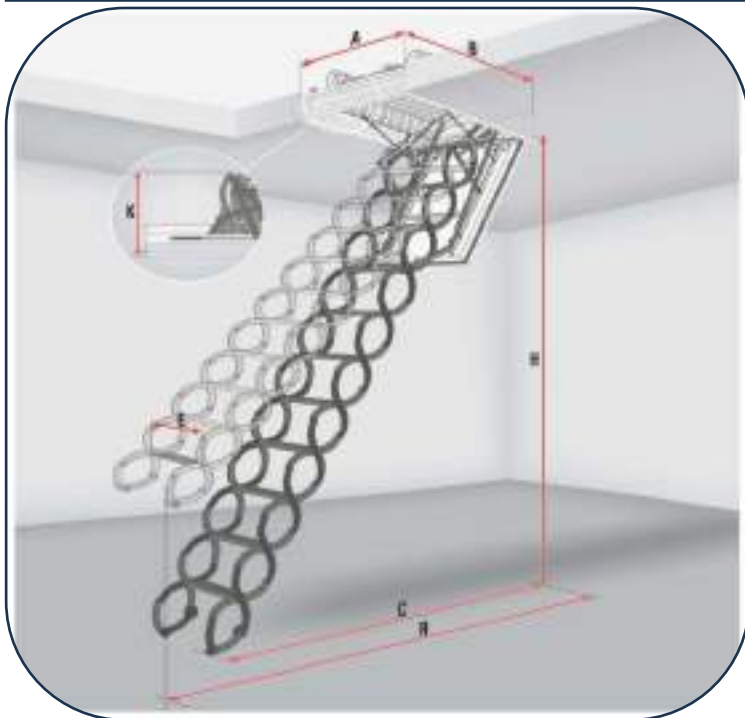
Project Abstract: Fabrication and Supply
Scope of Work: Aluminium Access Hatch with ladder
Location: Jubail Island – Abu Dhabi
Project Tonnage:
Project Value: 0.2 million

Client: Jubail island investment company.
Consultant: M/s. EHAF
Main contractor: China State Construction Engineering
contractor: Dutco Tennant LLC
Project Duration: 1.5 Month



PROJECT PICTURES & DETAILS

Project Name: Yas Island Abu Dhabi



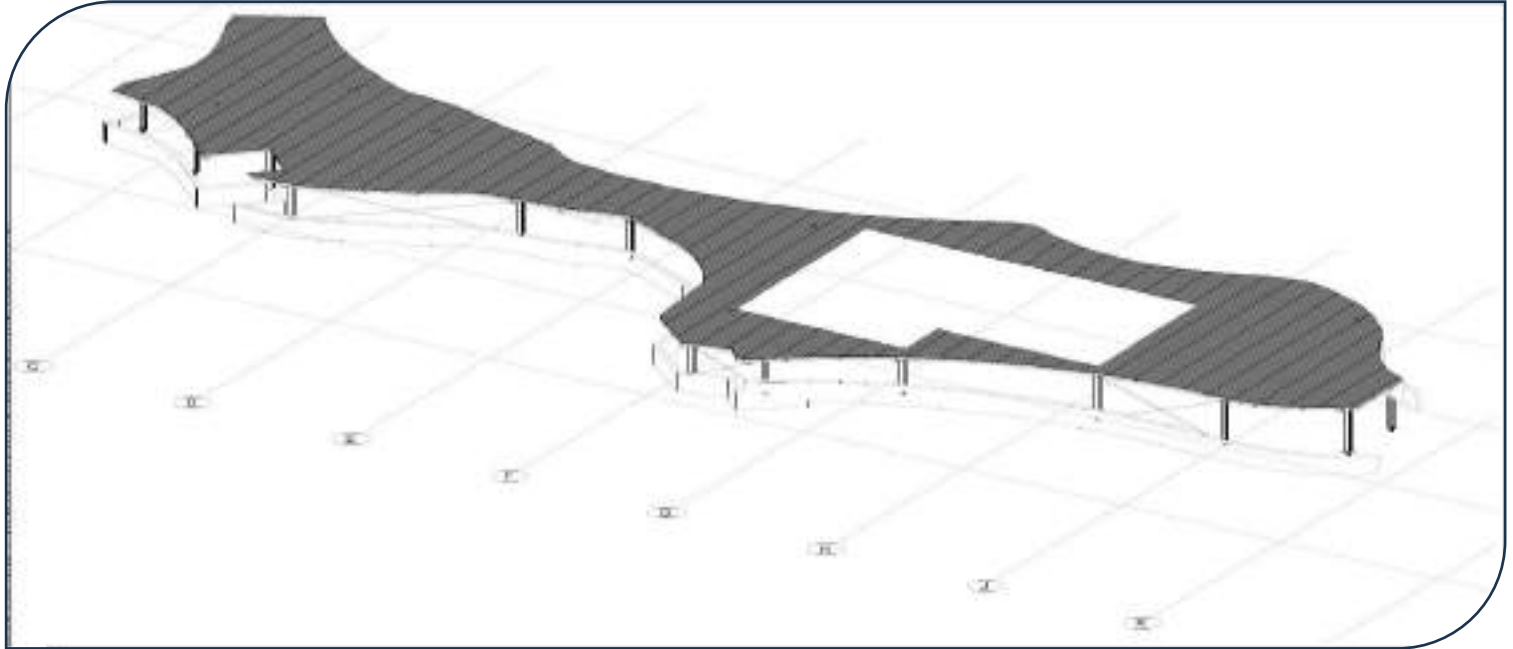
Project Abstract: Fabrication and Supply
Scope of Work: Aluminium Access Hatch with ladder
Location: Yas Island – Abu Dhabi
Project Tonnage:
Project Value: 0.5 million

Client: Trojan
Consultant:
Main contractor: Trojan
contractor: Dutco Tennant LLC
Project Duration: 3 Month



PROJECT PICTURES & DETAILS

Project Name: Mykonos Restranent



Project Abstract: Fabrication, Supply and installation

Scope of Work: Steel Structure with Roofing Works

Location: The Garden, Dubai

Project Tonnage:

Project Value: 0.6 million

Client: Mr. Ali

Consultant:

Main contractor: Bombay Contracting LLC

contractor:

Project Duration: 3 Month

11. LIST OF PROJECTS





LIST OF PROJECTS

**LIST OF PROJECTS
(Steel & Aluminium Division)**

PROJECT NAME	SCOPE OF WORKS	LOCATION
Jebel Ali Free Zone Warehouse Rolling Shutter	Steel Structure	Dubai
Jadaf Empower HO - Shaft Room Platforms and Access Ladders	Metal Works	Dubai
DIP - 2Sevenses - Car Parking Shade Removal	Parking Shades	Dubai
DIP - 2Sevenses - Trench Cover Plate	Metal Works	Dubai
Jebel Ali Free Zone Transweld - Cladding Removal	Metal Works	Dubai
Motor City Costra - Metal Trim	Metal Works	Dubai
DIP - 2Sevenses - Pump Room Roof	Metal Works	Dubai
Jebel Ali Dutco - IT Skid	Metal Works	Dubai
NASEO - Car Parking Shade	Parking Shades	Dubai
Fujairah EO - Store Room Wall Panel with Sliding Door	Steel Structure	Dubai
Al Furjan Owner Villa - Aluminium Works	Aluminium Works	Dubai
Al Barsha - Dubai Hills Private Villa - Steel Structure Roof	Steel Structure	Dubai
Top Concept - Mykonos Mykonos Restaurant - Steel Structure with Roof	Steel Structure	Dubai
BK Modular - Jebel Ali Chimney	Steel Structure	KSA
Seven Seas - DIP Plate Cutting	Metal Works	Dubai
Villa - Palm Jumeirah Sign Board	Metal Works	Dubai
Factory - Sajaa Plate Cutting	Metal Works	Dubai
Camp - DIP Dinning Tables and Bench	Metal Works	Dubai
Camp - DIP Kitchen Tables	Metal Works	Dubai
School - Kawaneej GI Support Angles	Metal Works	Dubai
A55 Villa - Palm Jumeriah Steel Structure	Steel Structure	Dubai
AFEC - Dubai Festival City Mall - Façade Structure	Steel Structure	Dubai
School - Kawaneej-EIFS Support	Steel Structure	Dubai
Dubai School - Barsha-Shade Structure	Steel Structure	Dubai
Dubai School - Barsha-Steel Staircase	Steel Structure	Dubai
L112 Villa - Palm Jumeriah-Steel Structure	Steel Structure	Dubai
Dubai School - Barsha-Portal Frames	Steel Structure	Dubai
Dubai School - Barsha-Metal Façade	Steel Structure	Dubai
Dubai School - Barsha-GRC Support	Steel Structure	Dubai
School - Kawaneej-Trench Chequered Plates	Steel Structure	Dubai
School - Kawaneej-Drop Beams	Steel Structure	Dubai
School - Kawaneej-Window Pods	Steel Structure	Dubai
L100 Villa - Palm Jumeriah-Steel Structure	Steel Structure	Dubai
Dutco - China State-Hatch	Aluminium Hatch	Abu Dhabi
NAS Mall - Nad Al Sheba-Canopy Structure	Steel Structure	Dubai
Adil Villa - Jumeriah-Steel Structure	Steel Structure	Dubai
Bloom Villa - Palm Hills-Canopy Structure Fabrication Only	Steel Structure	Dubai
School - Kawaneej-Heavy Drop Beams, Chain Block Hanging Supports and Light Supports	Steel Structure	Dubai
M60 VILLA	Steel Structure	Dubai
BENCH & TABLE - 20 Sets	Metal Works	Dubai



LIST OF MACHINERIES

Roof Access Hatch - Nakhali	Steel Structure	Dubai
Jumeirah Bay Villa	Steel Structure	Dubai
School - Kawaneej-Type 4 Hanging Beam-16 Nos	Steel Structure	Dubai
BENCH & TABLE - 40 Sets	Metal Works	Dubai
Fabrication and supply of signage steel structure - 1 Nos	Metal Works	Dubai
School - Barsha-Heavy Drop Beams, Chain Block Hanging Supports and Light Supports	Steel Structure	Dubai
School - Barsha - Mezzanine Decking	Steel Structure	Dubai
234073 - ARM METALS - BC271 (Sidra Villa-Cgae Ladder 1Qty)	Metal Works	Dubai
Trojan - Velodrome MS Bracket	Metal Works	Dubai
Fabrication and supply of steel step frame	Metal Works	Dubai
Fabrication & Supply of Car parking arch pipe	Metal Works	Dubai
JC # 23843, 23844 & 23847 - Velodrome - M.S. Bracket for Ramp Soffit	Metal Works	Dubai
PIVOT- GREEN VIEW-Roof Access Hatch	Aluminium Hatch	Dubai
MS BOLLARD WITH PAINTING (4 NOS)	Metal Works	Dubai
CONSTRUCTION CHARGES	Steel Structure	Dubai
JC # 24011 - Velodrome - M.S. Bracket for Ramp Soffit	Steel Structure	Dubai
GEMS Villa	Steel Structure	Dubai
BENCH & TABLE - 60 Sets	Metal Works	Dubai
JC 23693 - Velodrome - M.S. Bracket for Ramp Soffit (750 Nos)	Steel Structure	Dubai
Fabrication and supply of A frame -20 Nos	Steel Structure	Dubai
TSL-14390 (ACP)	Steel Structure	Dubai
MS plate laser Cutting	Steel Structure	Dubai
Sign Board Support (mis)	Metal Works	Dubai

12. CONTACT US





Contact Us

CONTACT US

OFFICE NO. 1 HAMAD MUSABAN AHMED SAIF, OLD SAJAA, AI SAJAA INDUSTRIAL AREA
SHARJAH, UNITED ARAB EMIRATES



TEL : +971 6 521 4212 / +971 52 106 1978 / +971 50 569 8908

Email

shabeer@bombaycontracting.com

info@armmetaluae.com

estimation@armmetaluae.com

operations@armmetaluae.com

Website & Location link

www.armmetaluae.com

<https://maps.app.goo.gl/7FyLG6rgVmquFP6u9>