



جبل الحاس
تجارة الصلب ذ.م.م
JABAL ALMAS
STEEL TRADING L.L.C.



"We leading the new era of steel"

+971 6 579 8446

info@jabalalmas.ae

Sharjah -United Arab Emirates

www.jabalalmassteel.com

ABOUT US

We are one of the leading importers, exporters and stockists of structural steel in the UAE. One of the most distinguished and specialized steel solutions providers in the Middle East. Our organization is backed by a rich vendor base across the globe, helping us provide quality products to our clients at the most comprehensive prices.

JABAL ALMAS is one of the most fast growing steel trading companies based in Sharjah, United Arab Emirates. The company has gained a strong foothold in the local, regional and African market by providing competitive product line which are complying with excellent quality parameters with international standard norms for Engineering, Fabrication, Scaffolding, Oil and Gas, construction companies.

We supply quality structural steel products whilst upholding high customer service standards. We mainly deal with the products like CR Coils & Sheets, MS Expanded metal and all other structural steel allied products, MS Plates(Sheets), GI Sheets and more.

JABAL ALMAS steel Trd. LLC Aspires To Become The Regional Leader In Steel Industry And To Constantly Create Value For All Our Customers And Employees.



Vision & Mission

Vision:

JABAL ALMAS STEEL TR LLC is led by the vision of becoming the partner of choice of clients in the Oilfield, Structural steel and Construction sectors by upholding efficiency, cost-competitiveness and the highest standards of services.

Mission Statement

We will adhere the highest standards of quality and continuously invest in innovative products to meet the demanding and diverse needs of our customers.

OUR PRODUCTS

MS Plates, Coils, Sheets, Round Bar, Angles, Flat Bars, etc.

MS PLATES

Standard : A36, S275, SS400 and S355

Thickness : 4-100 mm

Size : 1.5X6, 2X6, 2.5X12, 3.0X12

M.S CHK PLATES

Standard : A36, S275, SS400

Thickness : 1.5 mm to 12 mm

Size : 1220 X 2440mm, 1.5mtr X 6mtr

COILS

Standard : S275, SS400, S355

Thickness : 1-50 mm

Size : 1219 or customized

SHEETS

Standard : A36, S275, SS400 and S355

Thickness : 1 mm to 100 mm

Size : 1220 X 2440 or customized

MS ROUND BAR

Thickness : 5.5 mm to 100 mm

Size : 6M / 12M or customized

Standard : S275, SS400, S355

ANGLES

Standard : S275, SS400 and S235

Thickness : 2-15 mm

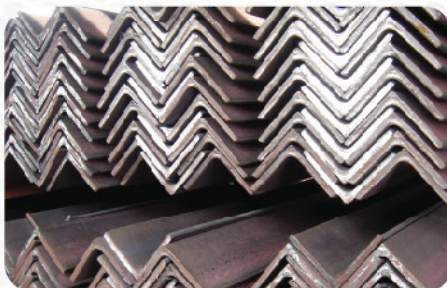
Size : 25X25-200X200 or customized



M.S Plates



M.S Round Bar



Angles



Flat Bars



FLAT BARS

Standard : S275, SS400 and S235

Thickness : 3 mm to 40 mm

Size : 12 mm to 250 mm

Aluminium Sheets, Chequered Plate

ALUMINIUM SHEET

Specification : Alloy AA 1100 H 14 Temper

Thickness : 0.5mm to 20mm

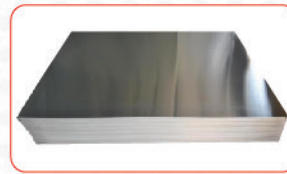
Size : 1220 X 2440

CHEQUER PLATE

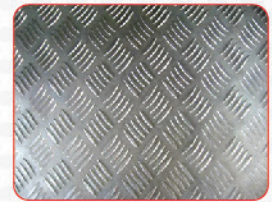
Specification : AA 3105 Mill Finish

Thickness : 2mm to 5mm

Size : 1220 X 2440



Aluminum Sheet



Chequer Plate

G.I. Pipes, Coils, Sheets, Grating, etc.

G.I. PIPES

Standard : ASTM A53 GR A/B, BS 1387

Thickness : 1.50 mm to 7.11 mm

Size : 1/2" to 10"/ OD or customized



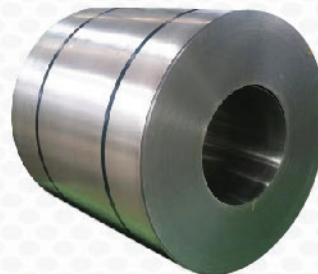
G.I. Pipes

G.I COILS

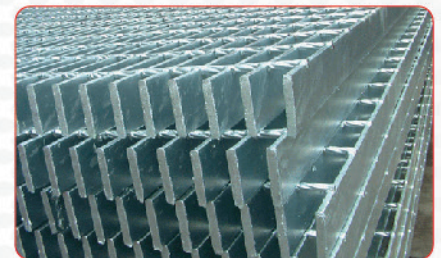
Coting : 120 to 275 gram

Thickness : 0.40 mm to 3.80 mm

Size : 1219 /customized



G.I. Coil



Grating

G.I SHEET

Coting : 120 to 275 gram

Thickness : 0.4 mm to 3.80 mm

Size : 1220 X 2440

UB, UC, JIS Beam, I Beam, H Beam and Channels

U BEAMS

Standard : S275 and S355

Size : 127 x 76 TO 1016 X 305 mm

U COLUMNS

Standard : S275 and S355

Size : 152 X 152 to 356 X 406 mm

GRATINGS

Standard : S235, SS400 and S275

Size : 100 x 50 to 900 X 300 mm

I BEAMS

Standard : S235, SS400 and S275

Size : 100X50-750X210 mm

H BEAMS

Standard : S235, S275

Size HEA : 96x100-990X300 mm

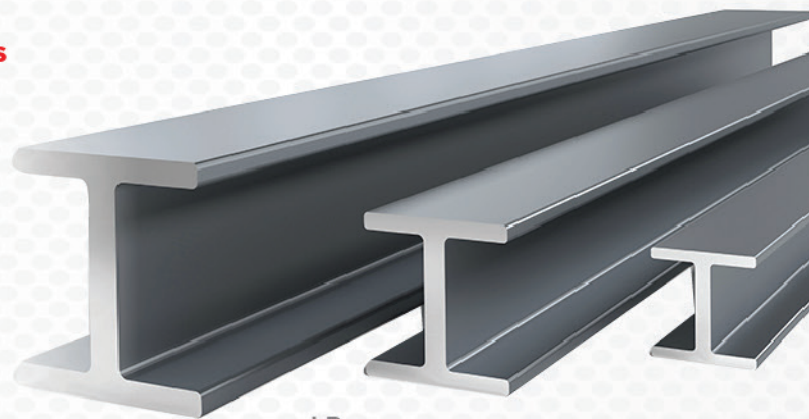
Size HEB : 100x100-1000X300 mm

CHANNELS

Standard : S235, SS400 and S275

Size UPN : 80X45-400X110

Size : 76X38-381X102



I Beams



M.S channel



U columns



Deformed Bar, Hollow Section and Pipes

DEFORMED BARS

Standard : BS4449-19997, JISG3109-2005

Thickness : 8-32 mm

Length : 12M (Turkey)

HOLLOW SECTION

Standard : ASTM A500 GR A/B

Thickness : 1.50-20 mm

Size : 40X20-500X300 mm

PIPES

Standard : ASTM A53 GR A/B, BS 1387

Length : 6 M / 12 M or Customised

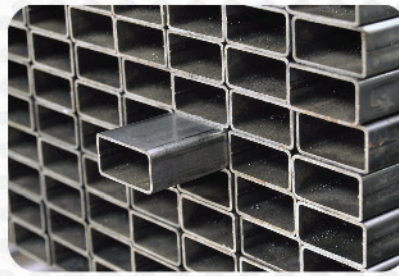
Size : 1/2" to 60"

SEAMLESS PIPES

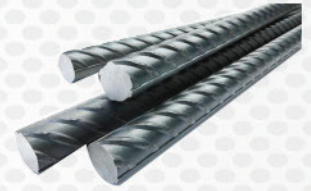
Standard : API5L/ASTM A106 GR B

Length : 6 M / 12 M or Customised

Size : 1/2" to 60"



Hollow Section



Deformed Bars



Seamless Pipes



Pipes

Stainless Steel Long Products and Flats

SS SHEET

Grade : 304, 304L, 316 and 316L

Finishes : 2B to No.8 (Mirror Finish)

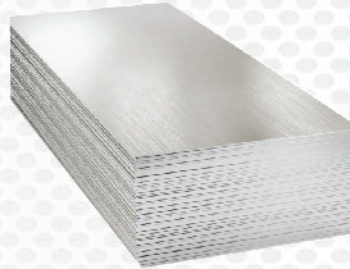
Thickness : 0.30-20 mm

UNEQUAL ANGLE

Grade : 304, 304L, 316 and 316L

Thickness : 1.50 mm to 10 mm

Size : 1/2" to 30" NB



S.S Sheet



Unequal Angle

A.S.A. PIPE SCHEDULE

Wall Thickness - mm - Weight in Kg/m

Nominal Pipe Size	O.D	Sch 10		Sch 20		Sch 30		STD		Sch 40		Sch 60		XS		Sch 80		Sch 100		Sch 120		Sch 140		Sch 160		XXS		Vol/m	
		mm	inches	Wall	Wt	Wall	Wt	Wall	Wt	Wall	Wt	Wall	Wt	Wall	Wt	Wall	Wt	Wall	Wt	Wall	Wt	Wall	Wt	Wall	Wt	Wall	Wt		Wt
6	1/8	10,3							1,73	0,36	1,73	0,36			2,41	0,46	2,41	0,46											0,0001
8	1/4	13,7							2,24	0,63	2,24	0,36			3,03	0,80	3,03	0,80											0,0001
10	3/8	17,1							2,31	0,85	2,31	0,85			3,20	1,10	3,20	1,10											0,0003
15	1/2	21,3							2,77	1,27	2,77	1,27			3,73	1,62	3,73	1,62							4,78	1,95	7,47	2,55	0,0004
20	3/4	26,7							2,87	1,68	2,87	1,68			3,91	2,19	3,91	2,19							5,56	2,90	7,82	3,63	0,0007
25	1	33,4							3,38	2,50	3,38	2,50			4,55	3,23	4,55	3,23							6,35	4,23	9,09	5,45	0,0011
32	1 1/4	42,2							3,56	3,38	3,56	3,38			4,85	4,47	4,85	4,47							6,35	5,60	9,70	7,76	0,0018
40	1 1/2	48,3							3,68	4,05	3,68	4,05			5,08	5,41	5,08	5,41							7,14	7,23	10,16	9,55	0,0023
50	2	60,3							3,91	5,44	3,91	5,44			5,54	7,48	5,54	7,48							8,76	11,10	11,07	13,45	0,0036
65	2 1/2	73,0							5,16	8,62	5,16	8,62			7,01	11,41	7,01	11,41							9,52	14,90	14,02	20,41	0,0053
80	3	88,9							5,49	11,29	5,49	11,29			7,62	15,27	7,62	15,27							11,12	21,31	15,24	27,67	0,0079
90	3 1/2	101,6							5,74	13,57	5,74	13,57			8,08	18,63	8,08	18,63											0,0103
100	4	114,3							6,02	16,07	6,02	16,07			8,56	22,31	8,56	22,31			11,13	28,30			13,49	33,53	17,12	41,02	0,0130
125	5	141,3							6,55	21,78	6,55	21,78			9,52	30,95	9,52	30,95			12,70	40,26			15,88	43,09	19,05	57,42	0,0199
150	6	168,3							7,11	28,26	7,11	28,26			10,97	42,56	10,97	42,56			14,27	54,20			18,26	67,55	21,95	79,18	0,028
200	8	219,1			6,35	33,31	7,04	36,79	8,18	42,53	8,18	42,53	10,31	53,14	12,70	64,63	12,70	64,63	15,06	75,75	18,26	90,43	20,62	100,90	23,01	111,17	22,22	107,27	0,048
250	10	273,0			6,35	41,77	7,80	51,00	9,27	60,29	9,27	60,29	12,70	81,54	12,70	81,54	15,06	95,84	18,26	114,74	21,41	132,75	25,40	155,07	28,27	172,63	25,40	165,15	0,074
300	12	323,8			6,35	49,72	8,38	65,20	9,52	73,82	10,31	79,72	14,27	108,96	12,70	97,44	17,48	132,01	21,41	160,73	25,40	186,77	28,57	208,35	33,32	239,60	25,40	186,97	0,104
350	14	355,6	6,35	54,68	7,92	67,94	9,52	81,28	9,52	81,28	11,13	94,49	15,06	126,50	12,70	107,38	19,05	158,08	23,83	194,90	27,79	224,72	31,75	254,48	35,71	282,76		0,126	
400	16	406,4	6,35	62,63	7,92	77,86	9,52	93,21	9,52	93,21	12,70	123,29	16,66	160,73	12,70	123,29	21,41	203,88	26,19	245,55	30,96	287,22	36,52	333,36	40,49	364,61		0,165	
450	18	457,2	6,35	70,59	7,92	87,79	11,13	122,36	9,52	105,14	14,27	155,91	19,05	205,80	12,70	139,19	23,83	254,59	29,36	309,69	34,92	363,12	39,67	409,26	45,24	459,82		0,208	
500	20	508,0	6,35	78,54	9,52	117,07	12,70	155,10	9,52	117,07	15,08	183,05	20,62	247,85	12,70	155,10	26,19	311,03	32,54	380,98	38,10	442,00	44,45	508,96	50,00	564,03		0,258	
550	22	558,8	6,35	86,50	9,52	129,01	12,70	171,01	9,52	129,01			22,22	294,05	12,70	171,01	28,58	373,58	34,92	451,14	41,27	526,82	47,62	699,74	53,97	671,18		0,312	
600	24	609,6	6,35	94,45	9,52	140,94	14,27	209,54	9,52	140,94	17,48	255,14	24,61	354,19	12,70	186,92	30,96	442,00	38,88	546,17	46,02	638,44	52,37	720,29	59,54	806,60		0,372	
650	26	660,4	7,92	127,50	12,70	202,83			9,52	152,87					12,70	202,83													0,435
700	28	711,2	7,92	137,42	12,70	218,73	15,88	272,18	9,52	164,80					12,70	218,73													0,505
750	30	762,0	7,92	147,36	12,70	234,64	15,88	292,06	9,52	176,73					12,70	234,64													0,580
800	32	812,8	7,92	157,28	12,70	250,55	15,88	311,96	9,52	188,66	17,48	342,70			12,70	250,55													0,660
850	34	863,6	7,92	167,20	12,70	266,46	15,88	331,83	9,52	200,59	17,48	364,58			12,70	266,46													0,746
900	36	914,4	7,92	177,13	12,70	282,36	15,88	351,72	9,52		19,05	420,56			12,70	282,36													0,835

