



**(CONCEPT OF VALUE ENGINEERING
IMPLEMENTED IN FACILITIES MANAGEMENT)**

CONTACT US:+971-50 546 0926(OPERATION
MANAGER)

TABLE OF CONTENT

■ ABOUT US	PAGE 3
■ MANAGEMENT COMMITTEE PRINCIPLES	PAGE 4
■ OUR ENGINEERING SERVICES	PAGE 5-9
■ CLIENTS LIST	PAGE 10-11
■ DESIGN AND PROJECT MANAGEMENT	PAGE 12
■ STANDARDS AND CODE OF PRACTICE	PAGE 13
■ HSE POLICY(HEALTH,SAFETY & ENVIRONMENTAL	PAGE 14
■ CONTACT US(DETAILS)	PAGE 15
■ COMPLETED FITOUT PROJECTS	PAGE 16-20

ABOUT US

WISETECH IS A UAE BASED COMPANY MAINLY ACTIVE IN ABUDHABI/DUBAI EMIRATE AND OUR SENIOR TEAM MEMBERS POSSESS MORE THAN 25+ YEARS EXPERIENCE IN ENGINEERING AND EXPERTISE IN THEIR TRADE OF BUSINESS.WE ARE HIGHLY COMMITED TO CUSTOMERS AND TO PROVIDE EXCELLENCE TO THEIR REQUIREMENTS AND DELIVER THE PROJECT ON TIME.WE ARE HIGHLY MOTIVATED TEAM OF ENGINEERS DIRECTED TOWARDS SUSTAINABLE MAINTAINANCE SOLUTIONS WITH CUSTOMER CENTRIC APPROACH.

MANAGEMENT COMMITTEE PRINCIPLES/AGENDA

OUR MISSION

OUR FIRM'S ULTIMATE MISSION IS TO PROVIDE 100% QUALITY SERVICES, AS PER AGREED CONTRACTS WITHIN BUDGETS AND CULTIVATE LONG TERM RELATION WITH CLIENTS

OUR VISION

WISE TECH STRIVES CONSISTENTLY AS A SPECIALIST-PROFESSIONAL IN MULTI-DISCIPLINARY SERVICE ACTIVITIES IN ENGINEERING WITH INNOVATION TO BRING OUT THE BEST AND HIGH STANDARD SERVICES AS FULFILLMENT TO OUR SET MISSION.

OUR VALUES

WISE TECH BUSINESS VALUES ARE REPUTATION, COMMITMENT, PROFESSIONALISM AND PERSISTENCE TO ACHIEVE OUR COMMITTED VISION.

OUR ENGINEERING SERVICES

- CIVIL INTERIOR WORKS
- EXTERIOR WORKS
- FLOORING WORKS
- PAINTING WORKS
- ALUMINIUM AND GLASS WORKS
- ELV WORKS
- BUILDING AND VILLA MAINTAINCE WORKS
- ANNUAL MAINTAINANCE WORKS
- DEMOLITION WORKS.

CIVIL INTERIOR WORKS:

WE ARE WELL-VERSED IN METHODOLOGY OF CIVIL & INTERIOR WORKS AS PER UAE STANDARDS SUCH AS MASONARY WORKS,PLASTERING WORKS,INTERIOR PAINTING WORKS,PARTITIONS & PANELLING WORKS, DOORS & WINDOWS,WATER-PROOFING WORKS ETC.

EXTERIOR WORKS:

WISETECH IS FULLY COMPETANT TO UNDERTAKE ANY TYPE OF EXTERIOR WORKS SUCH AS CARPARKING SCREED, EXTERNAL PAINTING (FOR VILLA, BUILDINGS,MALLS),ACP WORKS,INTERLOCK WORKS,EXTERIOR FOUNDATIONS FOR WATER TANKS OR AC EQUIPMENTS INCLUDING INSTALLATIONS

FLOORING WORKS:

WE PROVIDE ANY TYPE OF FLOORING AS PER DESIGN & SPECIFICATIONS SUCH AS CONCRETE SCREED 30MM TO 150MM,FLOOR TILING,WALL TILING,MARBLE WORKS,SELF-LEVELLING WORKS,VINYL FLOORING,ASPHALT FLOOR SCREED,EPOXY FLOORING WORKS WITH MOVEMENT JOINTS WITH HIGH QUALITY FINISHES.

ALUMINIUM & GLASS WORKS:

WE WILL DELIVER ANY TYPE OF GLASS WORKS AND ALUMINIUM DOORS OR WINDOWS FIXINGS AS PER CLIENTS REQUIREMENTS OF ANY SIZES FOR BUILDINGS & VILLAS.ADDITIONALY WE ARE MAKING FABRICATIONS & INSTALLATION OF EXTERNAL SHEADS FOR EQUIPMENTS AND WATER TANKS.

ELV WORKS(LOW VOLTAGE)

WE HAVE EXPERTISE TO OFFER ELV WORKS WHICH INCLUDES TELEPHONE SYSTEMS,ACCESS CONTROL SYSTEMS,CCTV, SMATV,STRUCTURAL CABLING WITH SERVER NETWORKING,CAR PARKING MANAGEMENT SYSTEM AND ROAD BARRIER

ANNUAL MAINTAINANCE WORKS

WE CAN UNDERTAKE BUILDINGS AND VILLA FOR ANNUAL MAINTAINANCE CONTRACT AND CALCULATE ITS ASSET VALUE ACCURATELY.WE ALSO EMPLOY FULL-TIME TECHNICIANS FOR THE MAINTAINANCE WHO ARE AVAILABLE 24/7 AND MAINTAINANCE ENGINEERS WILL SUBMIT PPM REPORTS ON MONTHLY BASIS.

DEMOLITION WORKS

WE ARE ALSO ENROLLING OUR LABOURS IN DEMOLITION WORKS FOR INTERNAL UNITS SUCH AS SHOPS PROFESSIONALLY AND TAKE CARE OF SKIP SERVICES IN MALLS,BUILDINGS AND VILLAS INCLUDING SHELL & CORE.





CANOPY & STEEL WORKS



INTERLOCK WORKS



MODERN BATHROOMS



DOORS
ALUMINIUM/WOOD/PVC



ROOF WATER-PROOFING



TILING WORKS



KITCHEN CABINET WORKS



STRUCTURAL REPAIR WORKS

WHY CHOOSE US:

- PLANNING
- COMMITED TO TIMELINE.
- AFFORDABLE RATES
- PRIORITY FOR MODERN MATERIALS
- SPECALIZED WORKERS FOR EACH TRADE.
- NO SUBSTANDARD WORKS
- SAFETY
- HOUSEKEEPING WHILE EXECUTION.
- WE INNOVATE.

OUR CLIENTS

H.E. SHEIK MOHAMMED AHMED KHALIFA ALSWEIDI PRIVATE OFFICE		Mr. SULTAN ALSUWAIDI REAL ESTATE
Mr. SAEED BIN HAMDAN NADHEER AL JUNEIBI		



الصقـر
لإدارة العقارات ذ.م.م



DESIGN AND PROJECT MANAGEMENT

WISETECH ADVANCE PLANNING BEFORE KICKOFF TO ANY PROJECTS WILL BE BASED ON DESIGN AND APPROVED DRAWINGS. OUR ENGINEERING TEAM ALSO BELIEVES IN PROJECT PLANNING AND PROVIDE PROJECT COMPLETION PROFESSIONALLY AND UPDATE THE PROGRESS `TIME TO TIME..WE ARE USING SOFTWARES FOR DESIGN WHICH ARE MENTIONED BELOW.

- AUTOCAD 2021-2D
- PRIMAVERA P6 19.1
- CARRIER HAP 5.1
- MS OFFICE PROFESSIONAL
- ERP FOR ACCOUNTING

STANDARD AND CODE OF PRACTICE

WE ARE USING STANDARD CODE OF PRACTICE FOR OUR ENGINEERING TEAM ASSISTANCE, WHICH ARE MENTIONED BELOW.

- ABUDHABI OCCUPATIONAL SAFETY AND HEALTH SYSTEM FRAME WORK(OSHAD-SF)
- CODE OF CONSTRUCTION SAFETY PRACTICE-DUBAI MUNICIPALITY
- GREEN BUILDING REGULATIONS AND SPECIFICATIONS- DUBAI MUNICIPALITY
- NFPA STANDARDS AND CODES
- FIDIC
- IPC(INTERNATIONAL PLUMBING CODE)
- ASHRAE STANDARDS AND GUIDELINES
- BS STANDARDS

HSE POLICY

WISETECH IS COMMITTED TO TAKING CARE OF ENVIRONMENT AND MAINTAINING A CLIMATE OF SAFETY AWARENESS BY IMPLEMENTING AN EFFECTIVE HEALTH, SAFETY AND ENVIRONMENTAL MANAGEMENT SYSTEM THAT MAKES US CONSISTENTLY CONSTANT IN HSE PERFORMANCE AND ZERO ACCIDENTS

OUR BASEPLAN OF SAFETY PROGRAM IS BREIFED SHORTLY BELOW:

- OUR SAFETY INCHARGE WILL ENSURE BEST SAFETY PRACTICES WHICH COMPLY TO WORK ENVIRONMENT.
- WE WILL ENSURE ALL EMPLOYEES/SUBCONTRACTORS/SUPPLIERS RECEIVED APPROPRIATE TRAINING
- WE WILL ALSO PROVIDE APPROPRIATE EQUIPMENTS AND RESOURCES TO IMPLEMENT OUR HSE POLICY
- CONSULT AND INVOLVE OUR EMPLOYEES/SUBCONTRACTOR/SUPPLIERS TO FOLLOW SAFETY PRACTICES STRICTLY WITHOUT ANY NEGLECTIONS
- OUR PRINCIPLES IN POLICY OF HSE WILL REDUCE ACCIDENTS, ILLNESS, INJURES, REDUCE THE ENERGY USAGE AND MINIMIZE MATERIAL WASTAGES TO AVOID POLLUTION.

CONTACT US

ADDRESS:

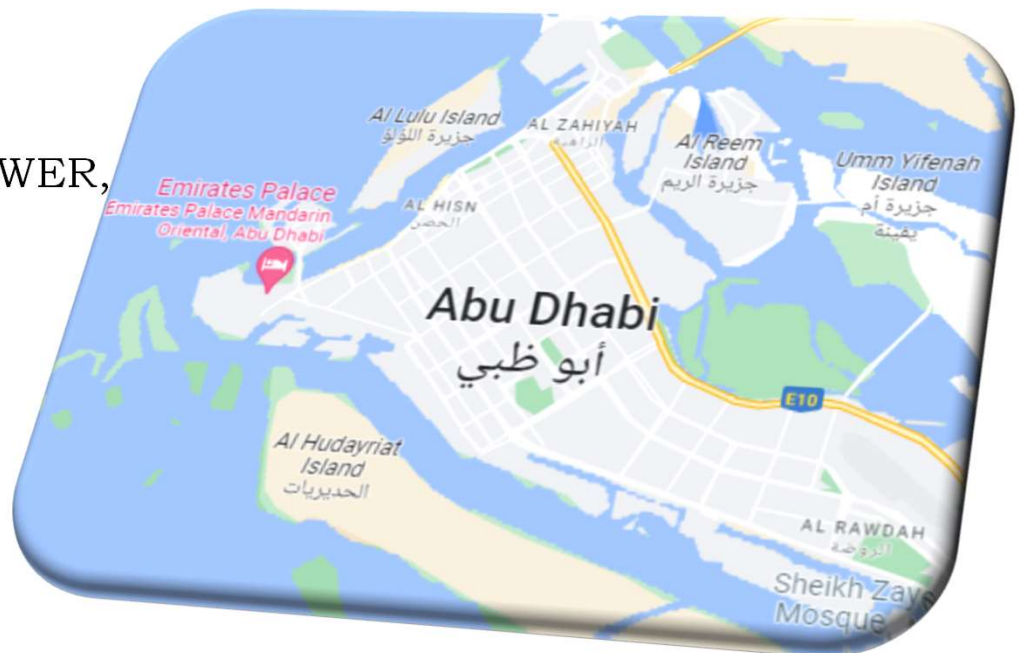
#403,
4th FLOOR,
ROTANA MALL TOWER,
AL-BATEEN
ABUDHABI-UAE

LANDLINE:

+971-2-6223108

OFFICIAL EMAIL:

wisetechauh@gmail.com



COMPLETED FITOUT PROJECTS- (RECENTLY)

CHATELS & MORE @ REEM MALL(Shop no:F1-183)

SCOPE OF WORK:

PROJECT PICTURES

1938 SQM 90 MM THK
Concrete Screeding

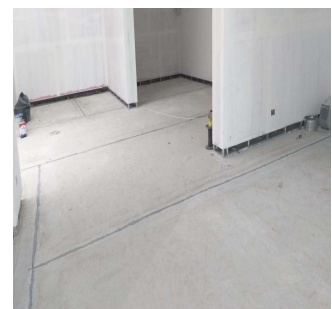
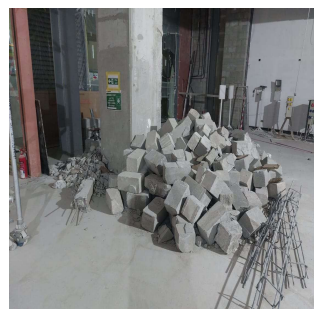
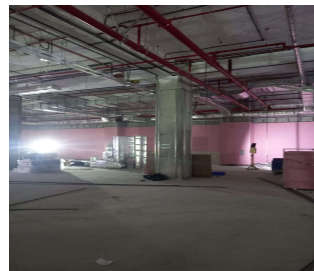
1938 sqm 3 MM THK Self-
Levelling works

Movement Joint 25 m2
Interval with Joint Filler

Electrical Room as Per ADDC
Regulations

FAHU Concrete Foundations
Works as Per Reem Mall
Managements Requirements

Demolition works



H.E. SHEIK MOHAMMED AHMED KHALIFA ALSWEIDI VILLA

WATER TANK & FOUNDATION WORKS

SCOPE OF WORK:

- Removal of existing damaged water tank
- Concrete foundation works
- Installation of New Tanks using 25 Ton Power crane
- Plumbing Works
- Garden Plumbing works

PROJECT PICTURES



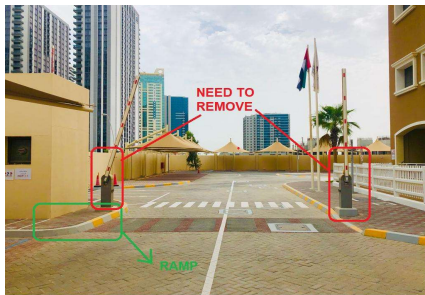
REPTON SCHOOL –ABUDHABI(FRY CAMPUS)

MAINTAINENCE WORKS

SCOPE OF WORK:

- Interlock works
- Demolition works
- Service Area Plumbing Maintenance
- Kids Class Maintenance works
- Grouting works all class rooms

PROJECT PICTURES



C7 816 BUILDING, ABUDHABI
EXTERNAL PAINTING WORKS



OFFICE INTERIOR,MUSSAFAH,ABUDHABI
FITOUT WORKS

