



AME STORAGE SOLUTIONS LLC





About Us



A family company founded in 1998, AME STORAGE is now a renowned storage systems manufacturer in the United Arab Emirates. With the aim to provide first class logistics solutions for the warehouse, plant and office, AME STORAGE SOLUTIONS LLC is constantly designing and engineering new products through its Research and Development programs. AME STORAGE SOLUTIONS LLC has complete ranges of quality storage and material handling equipments from light to heavy duty storage systems to cater the wide spectrum of customers.



Every component of medium duty to heavy duty racking systems are designed with extreme detail and manufactured under strict quality control.

Sited on an 5000 square meter areas in Ajman , United Arab Emirates, AME STORAGE SOLUTIONS LLC boasts of modern manufacturing facilities of automatic and semi-automatic machines, the use of the certified steel and highly qualified workmanship in the production of these high precision products.

The research and development team consisting of qualified engineers, professional tool makers and designers are constantly in touch with the market's requirements.

Products are designed with user's comfort and safety in mind. Load and usage tests of these products are done in actual operating conditions and environment, on a regular basis.

We are highly fond of flexibility and dynamism within work area and proud of our vast knowledge on our products and their applications. We measure our success against our customers' success.

MANUFACTURING PROCESS FLOW CHART



02

AME STOAGE SOLUTION LLC

Manufacturing Process has operated with automatic and semi- automatic machines and the use of trained and skilled manpower that is executed under vision of supervisors and enforcement authorities which is shown in the following chart.



Delivering raw of materials



Cutting unit



Pressing units



Welding unit



Roll form unit



Auto punch unit



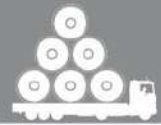
Washing, color, packaging & storage unit



Delivery unit



Delivering



FACILITY EQUIPMENTS

03

SLITTING

Slitting is used to cut raw material - a wide coil of steel or metal or the mother coil - into a number of narrower coils called slitted coils.



STAMPING

In the stamping process, holes are punched according to the mould made to create multiple shaped holes. Punch tooling is made of hardened steel so that the punched holes are as clean as possible.



BENDING

After stamping, the punched baby coils are sent for bending or forming and cutting. In bending, the metalwork is bent along a straight axis that products V-shape, U-shape or channel shape according to the production requirements for the metalwork.



MOULD MAKING

Moulds are accurately made wire cut EDM machine to create the required stamping patterns



ROLL FORMING LINE

In forming and cutting, the metalwork is formed and cut to sizes according to the requirements to ultimately form a desired roll - formed profile.



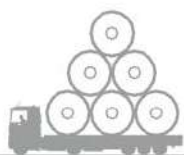
POWDER COATING

Powder coating is a process where epoxy polymer powder finishes are coated on formed



WELDING & SPOT WELDING

To permanently join the multiple metal parts together into usable products, welding is carried out by melting both adjoining materials. As the molten metal quickly cool, the two adjoining pieces are then permanently bonded. Spot welding is a popular welding method where contacting metal surfaces are joined by the heat obtained from resistance against electric current flow.





Adjustable Pallet Racking

Description:

Adjustable Pallet Racking is designed for palletized & non palletized heavy goods in a variety of sizes and load capacities.

Usage:

Materials, goods and spare parts warehouses

Cold Stores

Manufacturing & Distribution centers.

Features:

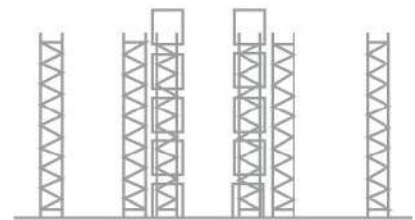
Adjustable loading beams by 75 mm pitch Variation in dimensions and load capacities. Quick and easy access to goods and materials. Bolted frame components.

Design and installation of racking system proportional to height of warehouse building.



Specification

Dimensions (cm)	Height	200 To 1200
	Bay Span	135-194-232-270-300-330-360-400
	Depth	70-80-90-100-110-120
Load Capacity	Per Bay	Maximum 16000 Kg
	Per Level	Maximum 4000 Kg
Paint	Frames and related components are blue powder coated (epoxy polyester)	
	Other parts (arms and accessories) orange powder coated (Epoxy - Polyester)	



Cantilever Racking System

06

Description:

Cantilever is classified under the category of heavy duty racking systems, which is applicable for storing longitudinal materials & goods such as pipes, profiles, steel bars etc.

Usage:

Suitable for storing longitudinal loads such as:
Metal pipes and p v c.

Timber

Light and heavy profiles. Sheets of chipboard
Building sections.

Heavy and bulky boxes Rolls of carpets.

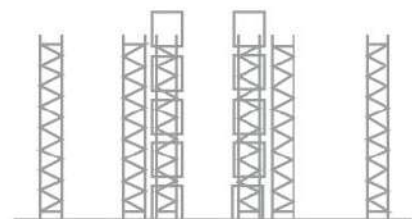
Features:

The main feature is no column in front of which makes loading and unloading, easy. System with different heights, arm lengths, bays and loading capacities is available. load and unload with fork-lifts. Arms easy adjustable by 15 cm pitch. Convenient access to all the goods.



Specification

Dimensions (cm)	Height	200 To 1200
	Bay Span	135-194-232-270-300-330-360-400
	Depth	70-80-90-100-110-120
Load Capacity	Per Bay	Maximum 16000 Kg
	Per Level	Maximum 4000 Kg
Paint	Frames and related components are blue powder coated (epoxy polyester)	
	Other parts (arms and accessories) orange powder coated (Epoxy - Polyester)	



Long Span Racking System

07

Description:

An adjustable Racking system suitable for medium and semi heavy hand-loaded goods. Long span system is suitable for general purpose storage, retail display, engineering parts and document/archive storage.

Usage:

Materials, products, spare parts warehouses. Cold Stores.

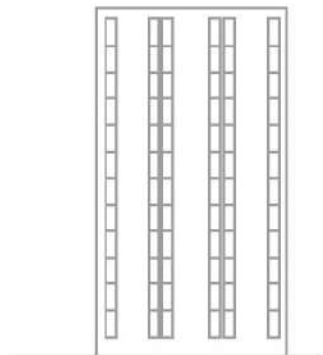
Features:

Design and installation in one to three tiers with staircase, handrails, catwalks and lift.
Various dimensions and load capacities.
Quick and easy access to goods and materials.
Quick and easy installation.
Capability of using lighting and fire extinguish equipment.



Specification

Dimensions (cm)	Height	200 To 1200
	Bay Span	135-194-232-270-300-330-360-400
	Depth	70-80-90-100-110-120
Load Capacity	Per Bay	Maximum 16000 Kg
	Per Level	Maximum 4000 Kg
Paint	Frames and related components are blue powder coated (epoxy polyester)	
	Other parts (arms and accessories) orange powder coated (Epoxy - Polyester)	



Heavy Duty Rack

Supported Floor

08

Description:

Heavy duty rack supported floor provides a system for storing bulk goods. This type of racking can be installed according to customer requirement.

Usage:

Storing goods for offices, educational centers, libraries, factories and warehouses.

Features:

Wide variety of profiles, dimensions and loading capacities.

Easy access to all goods using lift, stairs and access aisles.

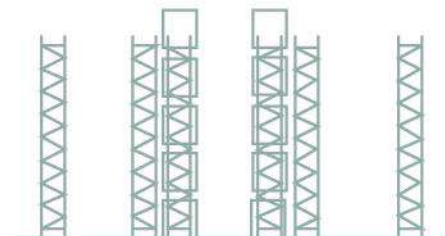
Quick and easy installation.

Capability of height extension



Specification

Dimensions (cm)	Height	1000 - 12000 mm
	Bay Span	2700 - 3600 mm
	Depth	300 - 1200 mm
Load Capacity		450 - 600 kg/sq. mtr
Paint	Frames and related components are blue powder coated (epoxy polyester)	
	Other parts (arms and accessories) orange powder coated (Epoxy - Polyester)	



RACKING COMPONENTS

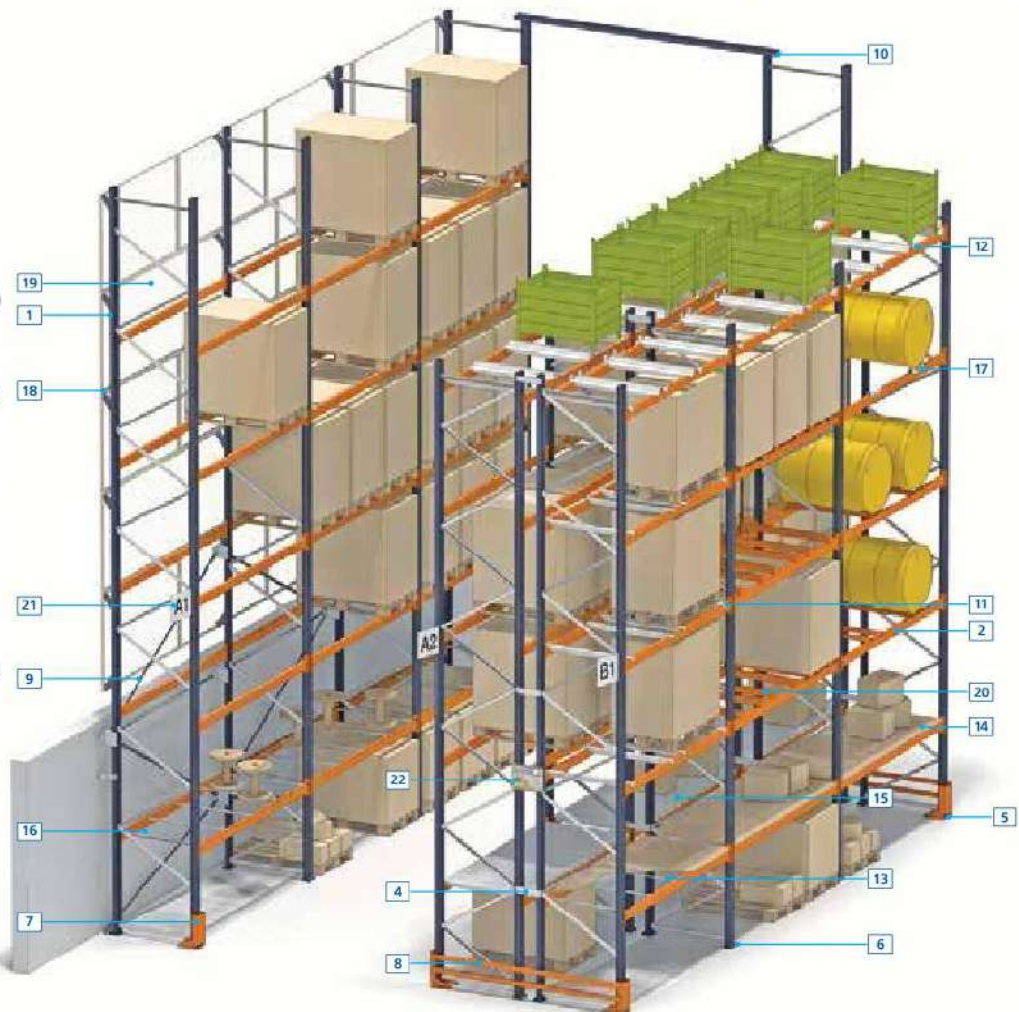
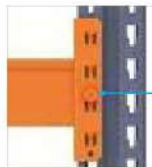
09

Basic components

Mecalux has developed an extensive range of accessories to help store goods on pallets, no matter how demanding your storage needs may be.

Components

1. Frame (page 10)
2. Beam (page 16)
3. Safety locking mechanism (page 18)
4. Row spacer (page 18)
5. Anchor bolts (page 11)
6. Levelling shims (page 11)
7. Upright protector (page 25)
8. Lateral protection barrier (page 24)
9. Cross bracing set (page 32)
10. Top portal tie (page 40)
11. Pallet support bar (page 26)
12. Container support bar (page 27)
13. Chipboard deck support (page 22)
14. Chipboard or melamine shelf (page 22)
15. Galvanised picking shelf panel (page 20)
16. Mesh shelf (page 21)
17. Drum support (page 28)
18. Back stop rails (page 30)
19. Fall protection mesh (page 31)
20. Raised pallet support bar (page 26)
21. Aisle sign (page 33)
22. Safe load warning sign (page 33)



QUALITY CONTROL



10



QC Loading Test



OUR QUALITY

AME places great emphasis to ensure that every product that leaves the plant carries the highest quality and recognized commitment of AME'S towards delivering top quality products to the customers. This is particular crucial in today's competitive and demanding business environment.

We strives for the best quality governed by high production standards through the deployment of advanced technologies and techniques, coupled with a stringent quality control system as well as in-depth knowledge and extensive experience in its own manufacturing capabilities.

QUALITY POLICY

AME is committed to achieve the company's vision through consistent fulfillment of the expectation and requirements of the valued customers.

The quality policies include:

- ▷ Customer satisfaction always come first;
- ▷ Constant review of quality management for effectiveness and improvements;
- ▷ Continual improvement to achieve cost effectiveness and deliver quality products;
- ▷ Continual R&D improvements for products and services excellence;