



نيوهيل للخدمات الفنية

NEW HAIL SWITCHGEARS LLC

Your Technical Partner

An ISO 9001 : 2015 Certified Company



☎ +971 4 3379499

☎ +971 55 9359852

✉ info@newhail.ae

🌐 www.newhail.ae

SERVICES WE DO...

We Design, Build, Retrofit and Site Modification for various types of LV Panels as per the requirement of Client and Consultants as per DEWA. We have expertise in the area of PLC, DDC, VFD installation/programming for MCC and various control panels & HVAC Panels. Also, we do energy management system and PQ monitoring and reports for energy audit to understand the demands and energy efficiency at their premises.



- ⚙ Main Distribution Board
- ⚙ Sub Main Distribution Board
- ⚙ Consumer Distribution Board
- ⚙ Metering Panels
- ⚙ Refurbishment & modification on existing systems
- ⚙ LV Panels 1600A, 2500A & 3200 A (Form 4 type)
- ⚙ Solar IP Panels & Solar Meter Cabinets
- ⚙ Capacitor Banks
- ⚙ Feeder Panels
- ⚙ Power Quality Monitoring and Reports
- ⚙ Energy Management Panels
- ⚙ PLC/VFD/DDC/SCADA Systems Programming and Configurations

ABOUT US

NEW HAIL SWITCHGEARS LLC is a fast-growing turnkey solution provider in the UAE. Our mission is to deliver maximum satisfaction to the client through integration, adaptation, and an ever-growing skill set. Our invaluable experience focuses on continually delivering top-notch solutions and maximum satisfaction.

THE NEW HAIL SWITCHGEARS LLC with its excellent team of engineers having years of collective expertise in handling engineering solutions for the industries of power distribution, Industrial automation, and energy management to satisfy its loyal customers beyond their expectations. The company was coupled with an aggressive approach, dedication, and a vision for tremendous growth. Facing a highly competitive market, our approach includes adapting the highest levels of efficiency, innovation, and perseverance. Due to the ever changing nature and demands of the market and keeping in mind the trends, we provide a technical works such as LV panel building, maintenance, panel retrofit works, HVAC and various control panels and Power Quality Monitoring: And delivered in a way to achieve real business results along with cost effective solutions. We continually explore, create and adopt new innovations to keep our solutions ahead of the market.

WHY CHOOSE US?

We have built a reputation for high levels of commitment, industry expertise and outstanding programmed delivery. Our teams provide clients with a unique blend of skills and innovation techniques gained from delivering the best projects in this market. We combine purpose and cost effectively to achieve excellent results.

Last but not the least, selecting **NEW HAIL SWITCHGEARS LLC** guarantees clients that they benefit directly from:

- Working with proven project records and deliveries as per project specifications and DEWA standards.
- Ability to work in both operational and non-operational environments minimizing disruptions to client trading.
- Dedicated key account teams focused on increasing value to clients through innovation and value engineering in products and services.
- The ability and genuine desire create strong working relationships with clients and industry colleagues.

We at **NEW HAIL SWITCHGEARS LLC** believe that customer satisfaction comes only on the right decisions at the right time along with the right people. Therefore, we firmly rely on our in-house teams which excel in their departments and make sure that everyone works in favour of client's satisfaction. All the projects undertaken are streamlined to ensure efficient, desirable and the best results. This further enables us to easily manage the production line to be at just-in-time (JIT) adhering to a high standard of quality finish with low cost to the client. The result is an enhanced, cost effective, tailor made solution to suit your project needs.

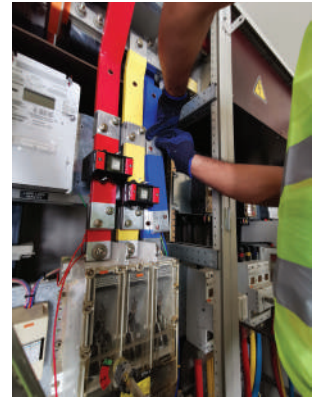
OUR APPROACH

At **NEW HAIL SWITCHGEARS LLC**, we firmly believe in a collaborative partnership approach with our clients. We endeavour to have a clear understanding of our client's needs and aim to fulfil them to utmost satisfaction. Our strength is in the teamwork and hence ensures that the right people are matched to our client's needs. Our customer testimonials are witness to the industry experience, passion and commitment, we used to build a team that always delivers success. We provide clients with a comprehensive range of interior services, enabling them to use our services completely or seamlessly blend project elements with our, in-house teams and consultants

GALLERY



On Site Execution



OPERATION

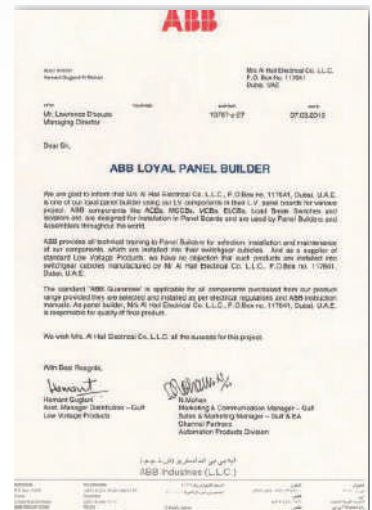
NEW HAIL SWITCHGEARS LLC has qualified engineers, secretarial staff and experienced technicians.

With our personnel, having a dynamic approach to market changes and requirements, proven designs, high quality products, modern production methods and a complete quality system ensure that our products are durable and comply with highest international quality standard & local regulations.

Our designs reflecting the client requirements are based on international standards and regional parameters such as:

Ambient temperature of S0oC (calibration of circuit breakers and derating of busbars)

- Use of corrosion resistant materials
- Adequate termination space for cable connections
- Availability of components.



QUALITY POLICY

Our Policy is to identify the needs of our customers and satisfy them by our quality products and services delivered on time in conformance with their requirements, through professionally trained employees and support by our principles.

PRODUCT WARRANTY

The equipment, we supply carry our inherent warranty against Manufacturing or operational defects for a period of 18 months from the date of delivery or 12 months from the date of commissioning, whichever is earlier.

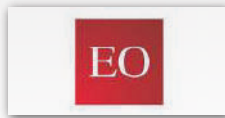
FUTURE

Through the application of experience, expertise and investment, **NEW HAIL SWITCHGEARS LLC** is a successful company that always strives to be ready to meet new requirement. A combination of teamwork, integrity and vision will answer the needs of tomorrow with same high degree of enthusiasm and professionalism, which the company applies today.

OUR MAJOR APPROVALS



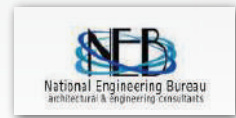
DEWA



EO



FEWA



NEB



ARCHDOME



ALTURATH



AL AJMI



CAPITAL



PROLINE

OUR MAJOR CLIENTS

- Union Co-operative hyper Market
- Majid Al Futaim City Center
- Fujairah International Airport
- S.S. Lootah Contracting Co.
- Shapoorji Pallonji Middle East
- Transgulf Electromechanical LLC
- Sam Building Contracting
- 4C Technologies
- Precision Star Electromechanicals
- Engineering Office
- I.A.S Lootah.
- Red Sea Housing Services Co.
- Al Kitbi Electrical Services.
- Desert Leisure Swimming Pools L.L.C
- Naresco Contracting L.L.C.

OUR MAJOR SUPPLIERS



List of Major Jobs Executed by NEW HAIL SWITCHGEARS LLC.

| S.No. | Contractor | Consultant | Project | Scope of work |
|-------|-------------------------------|----------------------------------|---|--|
| 1. | Diplomat Engineering | J.M. Regnault & Partners | Carrefour @ Fujairah City Centre. | Supply of LV Panels, 2500A ATS Panels, MCC, Capacitor Bank, SMDB & DBs |
| 2. | Alida Global Contracting | ISCS | Carrefour @ Kulaifath Qatar. | Supply of LV Panels, MCC, Capacitor Bank, SMDB & DBs |
| 3. | Avalon International | Gulf Leighton LLC | Airport Terminal @ Tarinkowt Afghanistan. | Supply of LV Panels, MCC, Capacitor Bank, SMDB & DBs |
| 4. | Avalon International | Gulf Leighton LLC | 3RC Fire Proof Building for American Base @ Afghanistan | Supply of LV Panels, MCC, Capacitor Bank, SMDB & DBs |
| 5. | Belhasa Projects | Chawla Arch & Consulting Eng. | Palace @ Al Barsha | Supply of Swimming Pool Control Panel |
| 6. | Sam Bldg.Contracting | J.M Regnault & Partners | Nassar Al Sayer Warehouse @ Jafza | Supply of LV Panels, MCC, Capacitor Bank, SMDB & DBs |
| 7. | 4C Technologies | J.P.Kenny | New 24" Lean Gas Pipeline from Buhasa to BAB & BAB to Thammama C | Supply of Array Junction Box, Array C. Box, Battery Breaker Box, Distribution Box. |
| 8. | KSM Engineering & Contracting | Urtaada Maaz Consultancy | Treasury Admin Information Building - Khartoom -Sudan. | Supply of 2500A MDB With ATS. |
| 9. | Koona Electromechanical Works | CUNDALL | Royal Amwaj-Spa Palm Jumeirah. | Supply of MCCP, SMDBs, DBs |
| 10. | Al Moayyed International LLC | -- | Abu Dhabi-Aviation Data Center in First Floor, Terminal-2 Building. | Supply of ATS Panel SMDB & DB's. |
| 11. | I.A.S Lootah Contracting | Proline Engineering Consultants | B+G+4 @ Al Quoz on Plot No:233-0167. | Supply of LV Panel, Capacitor Bank, SMDBs & DB |
| 12. | Naresco Contracting | Al Ajmi Consultant | G+13 Building @ Tecom | Supply of LV Panels, Capacitor Bank, SMDB & DBs |
| 13. | Glow Contracting | HSS Consultants | Electro industries Factory @ Qatar | Supply of LV Panels, Capacitor Bank, SMDB & DBs |
| 14. | Naresco Contracting | Civic Design Eng. Consultant | 2B+G+6+R Building | Supply of LV Panels, Capacitor Bank, SMDB & DBs |
| 15. | Lunar Constructions | International Engineering Center | B+G+4+Gym Building | Supply of LV Panels, Capacitor Bank, SMDB & DBs |
| 16. | The One Electromech | Capital Eng.Consultants | Perfect Polymers Factory | Supply of LV Panels, Capacitor Bank, SMDB & DBs |
| 17. | Unibuild Contracting | Design Concepts | B+G+4+Gym Building | Supply of LV Panels, Capacitor Bank, SMDB & DBs |
| 18. | Engineering office | Engineering office | Palace Mohd Sultan Markan @Al Barsha | Supply of LV Panels, Capacitor Bank, SMDB & DBs |
| 19. | Al Kithbi Electricals | Al Baha Engnering Consultants | Office+Factory for Al Masood Bergum | Supply of LV Panels, Capacitor Bank, SMDB & DBs |
| 20. | Unibuild Contracting | Design Concepts | B+G+6+Gym Building | Supply of LV Panels, Capacitor Bank, SMDB & DBs |
| 21. | Electrofos Electromechanical | Edmac Consultants | B+G+3 Building | Supply of LV Panels, Capacitor Bank, SMDB & DBs |
| 22. | SS Lootah Contracting | Port Saeed Consultant | B+G+11+Gym Building | Supply of LV Panels, Capacitor Bank, SMDB & DBs |

| S.No. | Contractor | Consultant | Project | Scope of work |
|-------|-----------------------------------|-------------------------------------|---|---|
| 23 | Naresco Contracting | Al Ajmi Consultant | B+G+11+Gym Building | Supply of LV Panels,Capacitor Bank,SMDB & DBs |
| 24 | Khlifa Al Juma Contracting | Al Mostaqbal Engineering Consultant | 3 Nos of G+8 Building | Supply of LV Panels,Capacitor Bank,SMDB & DBs |
| 25 | Al Hikma Building Cont | National Engineering Bureau | G+2 labour Camp | Supply of MDB,Capacitor Bank & DBs |
| 26 | Galaxy Star Electromech | Al Jasim Engg Consultant | G+2 Labour acc at Jabel ali | Supply of LV Panels,Capacitor Bank,SMDB & DBs |
| 27 | Future world Electromech | Osman Owdeh & Associates | G+3 Building | Supply of LV Panels,Capacitor Bank,SMDB & DBs |
| 28 | Engineering office | Engineering office | NAS 24 Stall Permanent | Supply of MDB,DB & Capacitor banks |
| 29 | Derby Contracting | Al Hilal Engineering Consultant | G+8 Building | Supply of MDB, M.C & DBs |
| 30 | Al Kitbi Electrical Services Co. | ALIGN Engg. Consultant | G+4 Labour Accomodation Building | Supply of LV Panels, DBs |
| 31 | Desert Leisure Swimming Pools LLC | Shankland Cox | Nakhali Pond | Supply of MCC Panels |
| 32 | 4C Global Technologies | Alasab Est. | New 24" Lean Gas Pipe Line from Buhasa Bab and Bab to Thammama C. | Supply of Battery Breaker boxes, array combine boxes, array junction boxes, DBs |



PANEL REFERENCE : 2500A LV PANEL
PROJECT : NATIONAL STORE
CONTRACTOR : SAM BUILDING MATERIALS



PANEL REFERENCE : 2500A LV PANEL
PROJECT : CARREFOUR @ FUJAIRAH CITY CENTRE
CONTRACTOR : DIPLOMAT ENGINEERING.



PANEL REFERENCE : WATER FEATURE
CONTROL PANEL
CONTRACTOR : ATLANTIS POOLS L.L.C



PANEL REFERENCE : SWIMMING POOL CONTROL PANEL
PROJECT : WEK - AL KHAIL
CONTRACTOR : M/s. CHICAGO MAINTENANCE &
CONSTRUCTION COMPANY L.L.C.



PANEL REFERENCE : FOUNTAIN MCC PROJECT
PROJECT : CARREFOUR @ KULAIFATH
CONTRACTOR : ALIDA GLOBAL CONTRACTING



PANEL REFERENCE : SWIMMING POOL CONTROL PANEL
CUSTOMER : BELHASA PROJECTS L.L.C



CONTACT US

NEW HAIL SWITCHGEARS LLC

Al Fajar Gulf Trading Building,
Warehouse No: 06

Ras Al Khor Industrial - II

P.O. Box: 294215

Dubai, United Arab Emirates.

☎ +971 4 3379499

☎ +971 55 9359852

✉ info@newhail.ae

🌐 www.newhail.ae

TRN:100497458800003