



Company Profile

Gohr Al Gillani Metal, Glass & Aluminum Specialist

Industrial Area 1, Ajman United Arab Emirates



ABOUT US

Gohr Al Gillani was formed in the year 2020, with the sole purpose of establishing a world-class Metal, Glass & Aluminum company in the region, to cater to the various needs of the discerning and quality conscious clientele.

We have a fully equipped plant for metal, steel, glass, aluminum and fabrication manufacturing facilities in the region.

Gohr Al Gillani has been successfully providing a full range of production and fabrication services to the residential and commercial sectors in UAE.

Our steady growth can be attributed to our primary principle of commitment to quality and timely completion with our strengths of strategic planning and project management.

Our ability to overcome project challenges without compromising on quality, serves as a testament to our potential clients for being word of mouth in this market.

Our success has been soundly built on a reputation for reliability, quality and service.

Our highly experienced team members are dedicated to the creation of innovative solutions based on your specific requirements and are prepared to construct & troubleshoot even the most complex projects.

In short, we are a team oriented company who works closely with their Client(s) to achieve the required end result.



WHAT WE DO

Services:

- Metal Design Works
- Steel Fabrication/ Welding Works
- Glass & Aluminum Works
- Folding Doors
- Fire Rated Glass Installation Works
- Structural Design & Calculations
- Powder Coating and Painting Works
- Customer's needs analysis & Cost Assessment
- Value Engineering

Sectors:

- Residential
- Commercial
- Shopping Malls
- Villas
- Apartments
- Offices
- High Rise Towers



GLASS & ALUMINUM

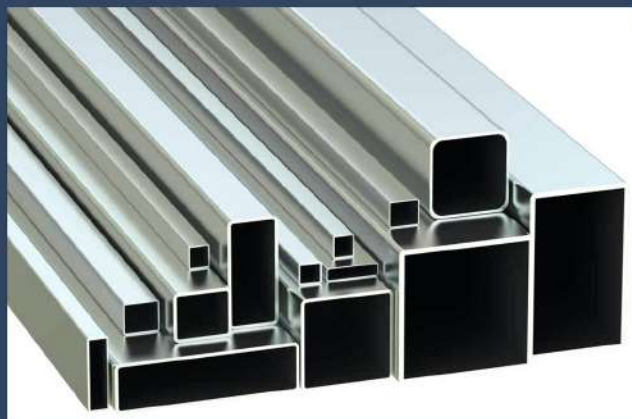


We deal with all kind of supply and installation of glass and aluminum including windows, doors, curtain walls, fixed partitions, clear glass, tinted/ colored glass, smart glasses, antique glasses etc.

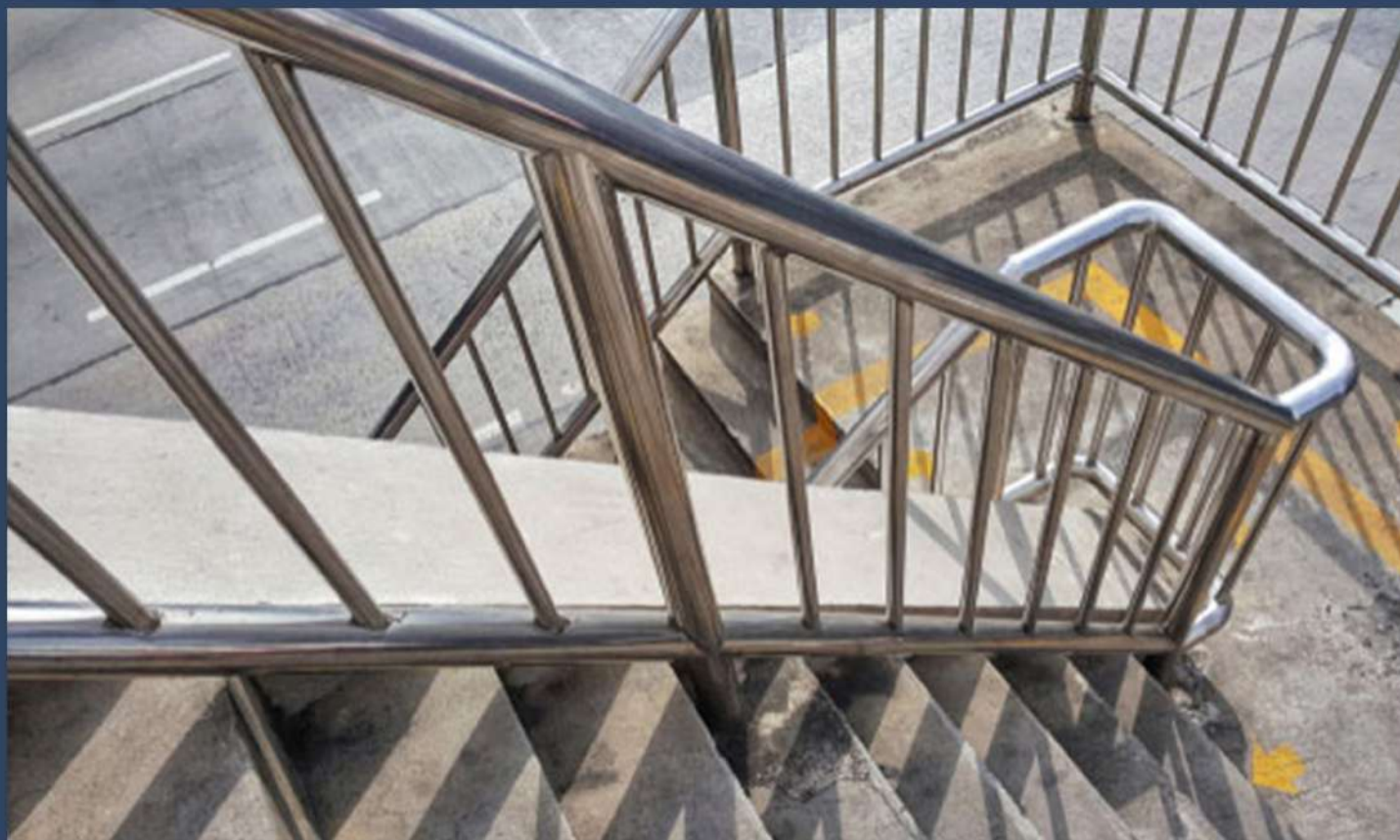




METAL FABRICATION



Steel Division is focused on projects that primarily involved design, fabrication and erection. Providing high-end solutions to all kind of steel requirements from design to erection/ installation.





SCOPE

Gohr Al Gillani has a Fabrication Facility of area 50,000 square feet and a Structural Steel Shed of area 10,000 sq.feet.

The plant has an annual capacity of 10,000 Metric Tons.

Fabrication area consists of equipments for manufacturing Hot rolled sections into structures such as frames, girders, strut beams etc. This area has overhead cranes.

Secondary area consists of equipment for manufacturing of connection plates, clips, etc. This area too has overhead cranes.

Abrasive blast cleaning and painting area for preparation and application of required protective coating.

Maintenance area consists of general purpose machine tools for manufacturing of in-house requirements of dies, punches, discs, etc.

Warehouse is utilized for storage of accessories, hardware, fasteners, etc.



CUTTING / DRILLING

Automatic Beam Line:

Band Saw Cutting:

- a. Degree of cut : Any skew cut at any angle
- b. Width : 50mm to 1500mm
- c. Flange Height: 50mm to 500mm
- d. Length : 12000mm
- e. Thickness Up to 50mm

Drilling:

- a. Height : 50mm to 500mm
- b. Thickness : 8mm to 60mm
- c. Hole Size : Up to 60mm

Portable Gas Cutting Machine:

For precision straight and round cutting of steel plates

Portable Profile Cutting Machine"

For precision cutting of complex shapes required by customer's specs.

SHEARING MACHINE FOR PLATES

HEARING CAPACITY:

- a. Thickness : 5mm to 16mm
- b. Length : 3000mm
- c. Width : Various



CUTTING / DRILLING

DRILLING MACHINE

DRILL CAPACITY

- a. Thickness 8mm to 60mm
- b. Height 50mm to 500mm
- c. Hole Size Up to 60mm

PUNCH PRESS MACHINE - PUNCHING CAPACITY

- a. Thickness 5mm to 40mm
- b. Width Various
- c. Hole Size 10mm to 40mm

BLASTING / PAINTING - AUTOMATIC BLASTING MACHINE

For proper surface preparation to comply with the required degree of cleaning and surface profile that will prevent premature failure of the coating system and for good coating adhesion.

Abrasive used: Steel Shot (S330~S230)

Painting System: For Industrial and Chemical Exposure of Structural Steel

Primer: Inorganic Zinc Coating

Tie Coat: Polyamide-Cured Epoxy

Top Coat: Polyamide Epoxy

Equipment used: Airless Spray



WELDING

Gohr Al Gillani Welding works using FCAW and SMAW processes are based on the structural Welding Code of the American Welding Society and the Specification of the American Institute of Steel Construction.

Daily workmanship of all welders are being monitored and evaluated every 6 days consecutive working period as required by the Gohr Al Gillani Quality Control System.

Welding Process : FCAW

Electrode Specification : AWS A5.20

Electrode Classification : E71T-1

Welding Process : SMAW

Electrode Specification : AWS A5.1

Electrode Classification : E7018

Our main activities are on:

Metal Fabrication Works

Steel Welding Works

Glass & Aluminum Works

Fire Rated Glass Works

Steel Structure Design & Calculation Works

Folding Doors

Powder Coating & Painting Works



RESOURCES

To meet the needs of its customers, Gohr Al Gillani stands on the know-how of an experienced team:

We have,

Professional, experienced engineers

Reliable estimators capable of assessing various projects

Qualified production technicians

Specialized manpower

This team can assist you in any type of fabrication and erection of steel products and structures. Gohr Al Gillani has the equipment support to meet the various standards or more complex needs of its customers in the construction field.

Gohr Al Gillani facilities are equipped with high capacity tools and machine such as:

Shears

Press brakes

Punch presses

Welding machines

Drills

Using this equipment, experienced personnel can thus meet all special orders for conventional structural steel and heavy steel work.



QUALITY CONTROL

Gohr Al Gillani Quality Control function is to develop and implement an integrated sequence or specific control on quality relative to materials, process and product based on quality aspects of industry specifications and customer requirements, design specifications and manufacturing process requirements to assure a timely shipment of products with proper quality at relatively minimum costs.

Top quality raw materials are used to manufacture metal components for steel structures or heavy steel work. Each employee receives the proper quality assurance training and is doing his/her job with the outmost care.

The company has a better control of its finished products with its parts checking system. It ensures that the product is ready for its intended use at the job site without modification. After blast cleaning of Structural Steel Members, the degree of cleanliness, surface profile and salt contamination tests are conducted to determine compliance with specified client requirements.

Gohr Al Gillani is focusing very hard on logistics to ensure that there is no delay or modification to be done at local job sites or during preparations for foreign projects.



CLIENTS



EMAAR



ALLIED GROUP

% ARABICA

نظارات دبي
DUBAI OPTICAL

PAL ZILERI

INTERMASS

ESTABLISHED 1977



الاتحاد للقطارات
ETIHAD RAIL

KO
INTERIORS

مجموعة الخريز
AL GHURAIR GROUP



MAISON DE
JULIETTE



by
bidou

AL NASR
Contracting Company L.L.C.



شركة النصر
للمقاولات ذ.م.م.

TECFIRE
safe is invisible



FEATURED PROJECTS

EPC Link Bridge, Abu Dhabi

Scad Office, Dubai

Uncle Tetsu - La Mer, Dubai

Deira Water Front, Dubai

Misk Residentail Tower, Sharjah

B'Dou Cafe - City Walk, Dubai

The Backyard BBQ - La Mer, Dubai

Citizen Affairs Private Project, Abu Dhabi

Maison De Julliette - La Mer, Dubai

Jolie Cafe - City Walk, Dubai

Al Ghurair Residentail Towers

Priville Office, Dubai

Pal Zileri, Mall of the Emirates, Dubai

Dubai Opticals, Mall of the Emirates, Dubai

Bits & Pieces, City Walk, Dubai

Villas in The Springs, Dubai



CONTACT US



Contact Us:

Industrial Area 1

Ajman, United Arab Emirates

info@gohralgillani.com

+971 50 515 6850

+971 52 331 0114