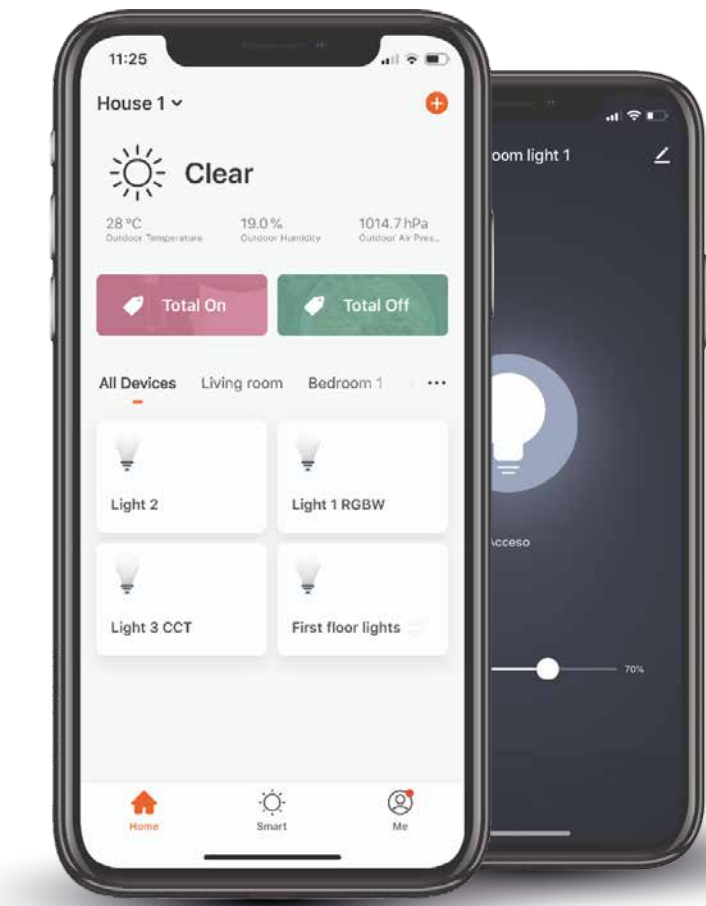


SMART CONTROL



With the App OneSmart it's possible to control devices remotely, from anywhere in the world via smartphone and voice commands with Google Home or Amazon Alexa. It's easy to create scenarios and events with a simple programming that involves the occurrence of an action under a certain condition or at a specific time.

OneSmart can manage up to 50 installations in different locations and up to 200 devices for each installations. E.G. 30 stores with 100 devices each. It's not necessary to install any gateway.



FOUR PRODUCTS IN ONE

Nexta Tech is an Italian company specialized in development and production of professional wireless systems for lighting control, smart automation and energy saving. With more than 15 years' in electronics production, Nexta Tech provides cutting-edge technologies for limitless applications in several sectors for managing lighting fixtures, smart furnitures, advertisement signs and outdoor pergola and awnings automation. Nexta tech solutions are extremely flexible for projects and OEM application thanks to the innovative controllers designed to be managed by wired push buttons, radio controls and Smartphone Application.

WWW.NEXTA-TECH.COM



CONTROL UNITS

230VAC LOADS CONTROL

MCU-L1/ONE
On-Off, 1 Out - Max 250W

TOP-L1/ONE
On-Off, 1 Out - Max 1000W

LOGIC 400/ONE
On-Off, 4 Out - Max 6000W

MCU-DM/ONE
Phase Dimmer, 1 Out - Max 150W

LED DRIVERS CONTROL

TOP 0110/ONE
0-1/10V control, Max 2000W

TOP-DL20/ONE
DALI broadcast, Max 20 DALI drivers

TOP-A/0307-0509
Dimmer, 12-36Vdc
3 Out 350-500-700-900mA

TOP-A/0307-0509 RGB
RGB control, 12-36Vdc
Out 350-500-700-900mA

CONSTANT VOLTAGE LED CONTROL

PLANO-ONE
Dimmer, RGB/W, CCT
4 Out 12-24Vdc Max 10A

PLANO-ONE/4
Dimmer, 4 Out
12-24Vdc Max 10A

TOP-V8/ONE
Dimmer, RGB/W, CCT
4 Out 12-48Vdc Max 24A

TOP-V8/ONE/4
Dimmer, 4 Out
12-48Vdc Max 24A

TOP-V8/EXT4
Power extender, 12-36Vdc
4 Out Max 24A

LB-ONE
Dimmer, RGB/W, CCT, 4 Out 12-24Vdc
Power supply versions 50-100-150W

LB-DIM/ONE
Dimmer, 4 Out 12-24Vdc
power supply versions 50-100-150W

TEKNA-ONE/2
Dimmer, 2 Out 12-24Vdc
integrated power supply versions 100-200W

WIRELESS CONTROLS

PORTABLE REMOTE CONTROL

HOBLO80

HOBLO90

LINEA

LINEA-T

WALL REMOTE CONTROL

OPTIMA

TOUCH

ROUND-1G

MCU-TX4

SENSORS AND TRIGGERS

TOUCH-1SP

ROUND-1SP

MOTO

SENSA

MCU-SCENARIO

SMART WIRELESS SYSTEMS FOR LIGHTING AND HOME AUTOMATION

ROLLING SHUTTERS AND BLINDS CONTROL

MCX-M/ONE
1 tubular motor 230Vac - Max 500W

TOP-M500/4ONE
4 tubular motors 230Vac - Max 500W

MCX-MVE/ONE
1 tubular motor 230Vac - Max 500W
Venetian blinds version

PERGOLA SYSTEM AND AWNINGS CONTROL

PRG-ML24/ONE
1 or 2 Motors 24Vdc Max 200W,
4 Out LED12-24Vdc Max 10A

PRG-ML/ONE
1 Motor 230 Vac Max 1000W,
3 Out LED12-24Vdc Max 10A

SCREEN-M400/ONE
4 Motors 230Vac
Max 500W/motor

TEKNA-ML24/ONE
1 or 2 Motors 24Vdc -2 Out LED12-24Vdc
Integrated power supply 240W

DRY CONTACT DEVICES - GATES AND DOORS CONTROL

PLANO-LOCK/ONE
12-24 Vac/dc power supply
1 Out dry contact 1A

PLANO-LOCK2/ONE
12-24 Vac/dc power supply
2 Out dry contact 1A

PLANO-LOCK3/ONE
12-24 Vac/dc power supply
3 Out dry contact 1A (open-stop-close)

PLANO-ELC/ONE
12-24 Vac/dc power supply
1 Out dry contact 3A (for el

KIT SOLUTIONS

LED-KIT
For LED lighting

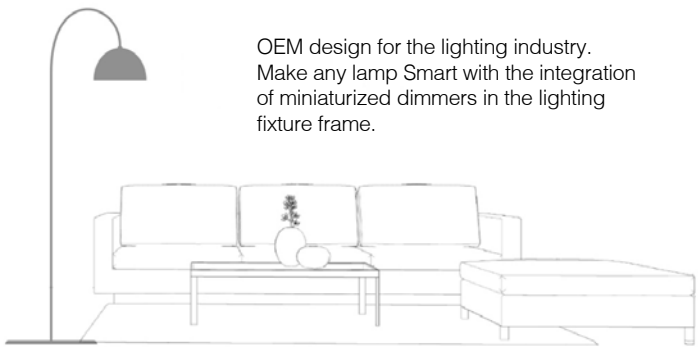
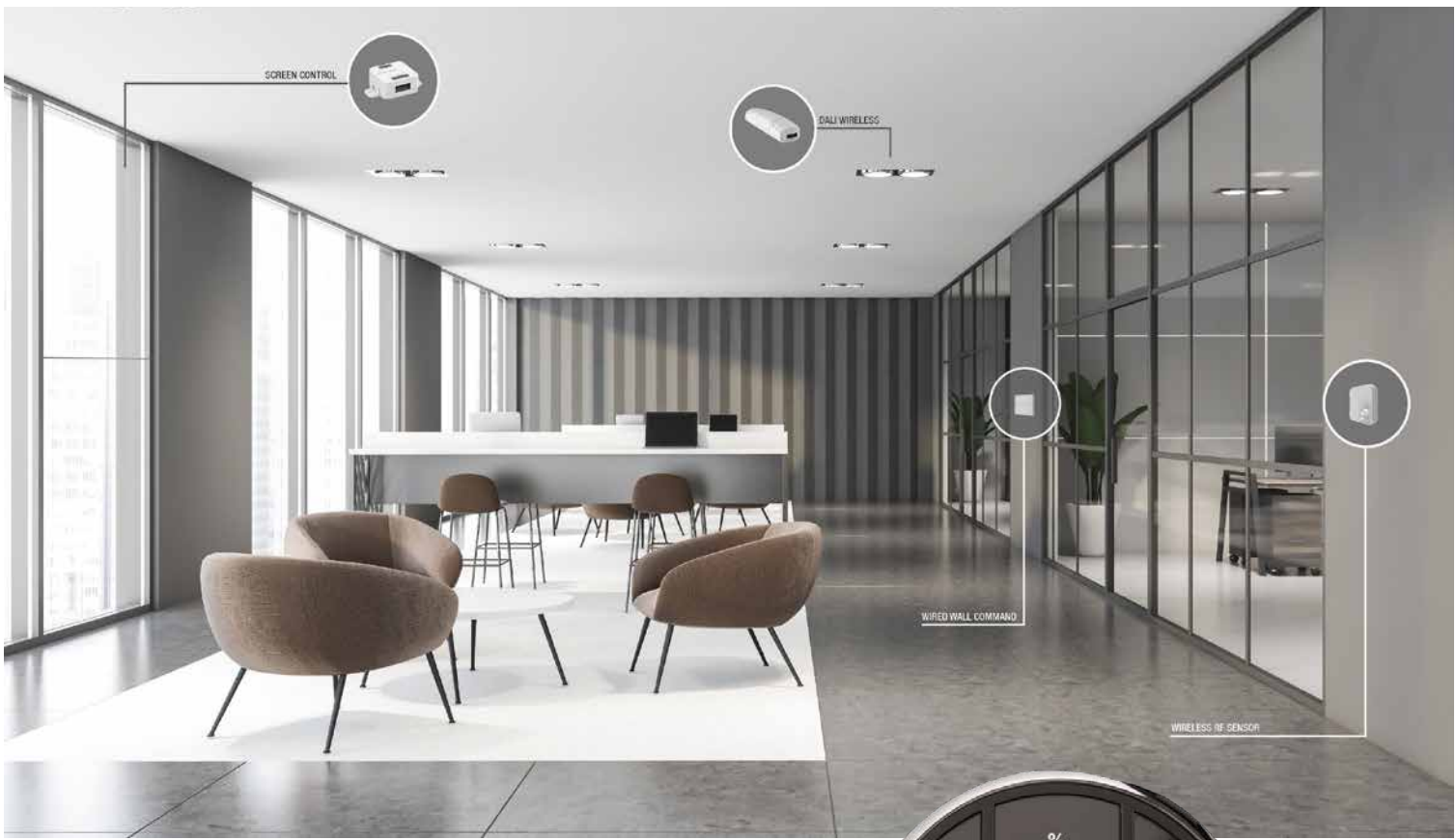
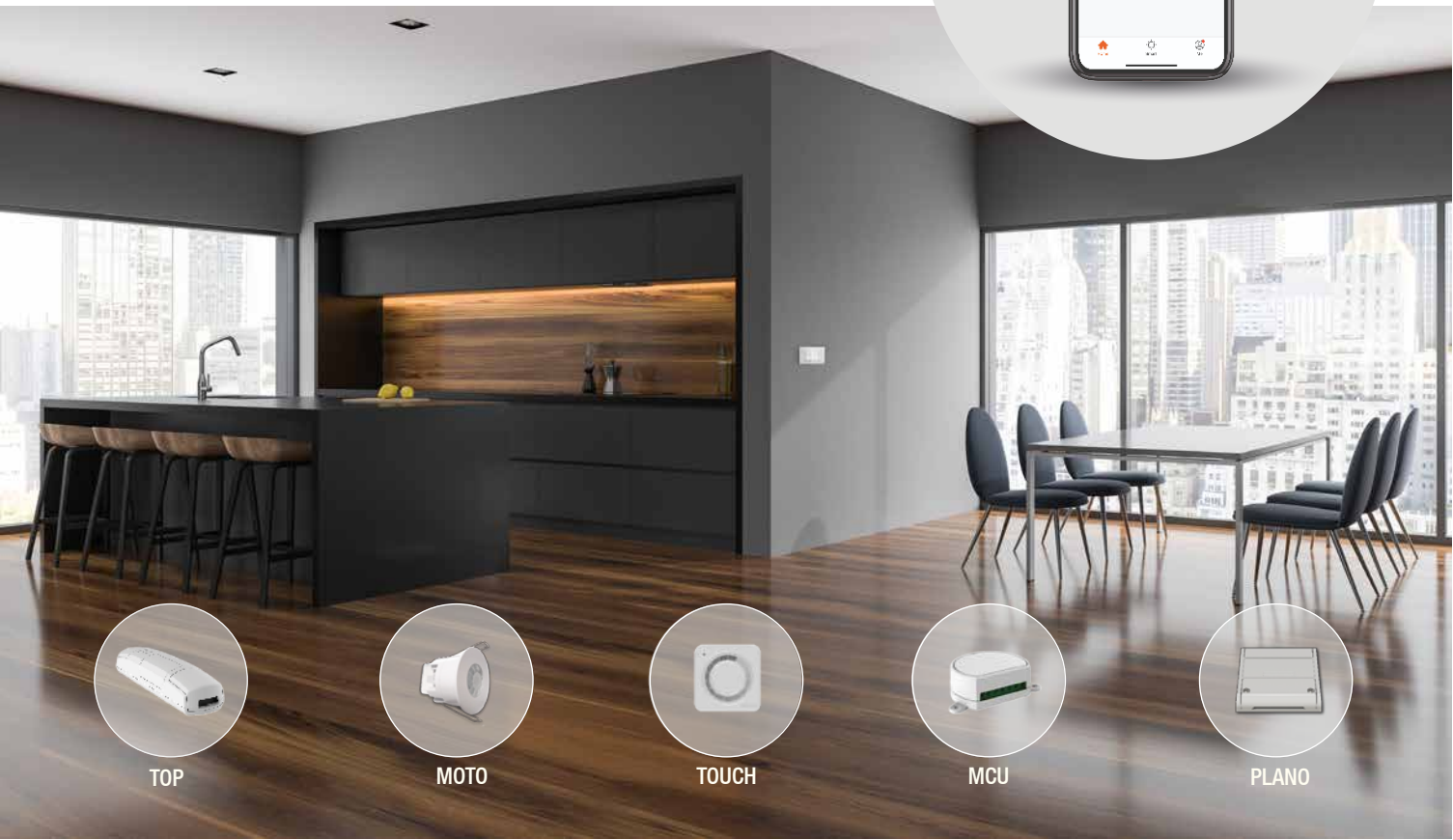
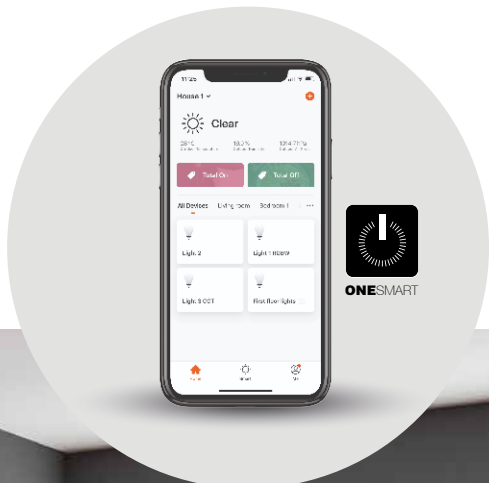
SCREEN-KIT
For electric shutters and blinds

GARDEN-KIT
For garden lights

GATE-KIT
For gates and garage door

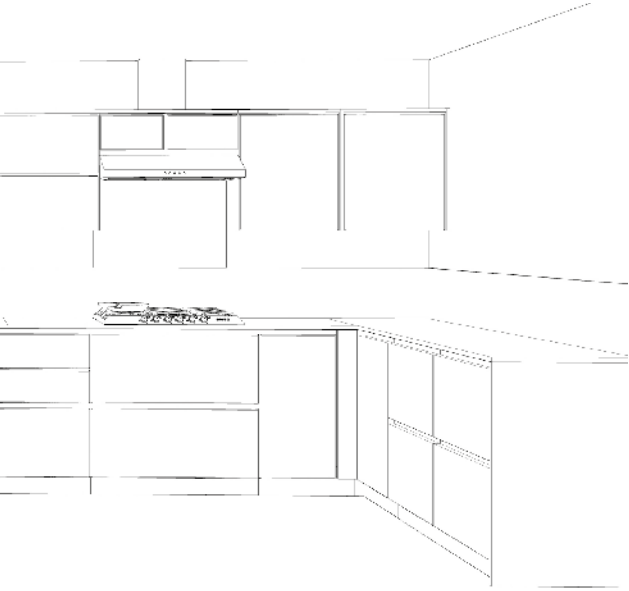
LIGHTING CONTROL

Smart and wireless electronic control for any kind of light. Dimmers, RGB and CCT controllers, remote controls and sensors for the automation of residential and commercial lighting projects.



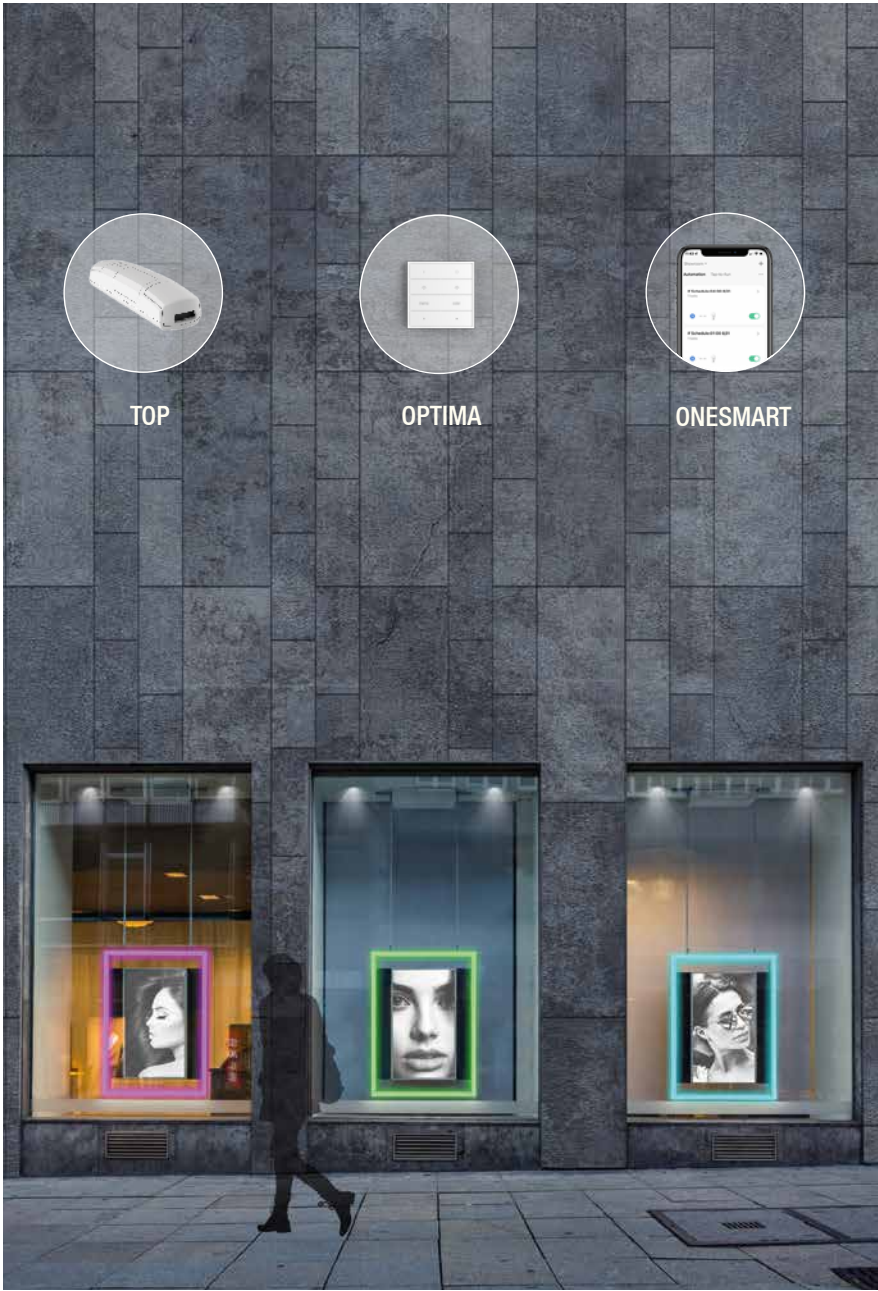
SMART FURNITURE

Complete range of wireless devices for making smart any furniture or design objects. Ultra-flat dimmers and patented sensors for light up wardrobes automatically, tunable white controllers for deciding the proper atmosphere in kitchens and interior spaces. Voice commands for an interactive user experience and for a comfortable use.



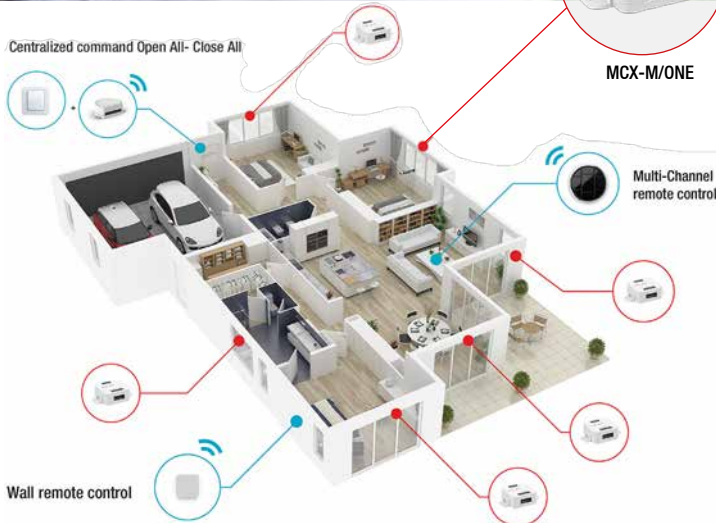
VISUAL

Electronic solutions dedicated to the Visual Communication industry. Advertisement signs, back-light boxes and expositors become smart thanks to the innovative controllers and sensors that simplify the management, make expositors more attractive and guarantee the best energy saving.



SCREENS

Wireless control system for blinds and shutters. The built-in wi-fi technology allows the command and the status control from anywhere by smartphone. Thanks to the cloud connection, it's possible to program total or partial opening and closings at a certain time or when a weather condition occurs.



PERGOLA

Wide range of solutions for the automation of pergolas and winter gardens. Control of motorized pergola roofs and side screens, lighting and heating with comfortable commands by wireless technologies RF and Smart WiFi.



STANLEY®



AUTOMATIC AND MANUAL DOOR SOLUTIONS

A DIVISION OF:

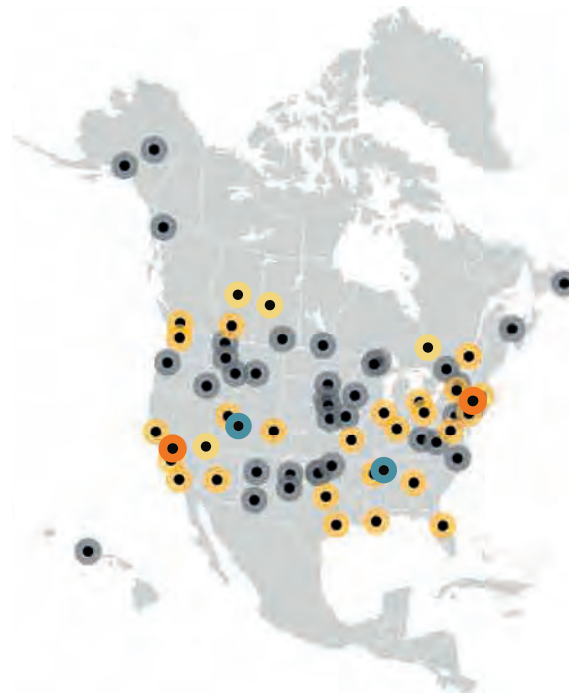
STANLEY.
Security

PERFORMANCE IN ACTION™

STANLEY ACCESS TECHNOLOGIES AUTOMATIC AND MANUAL DOORS

When it comes to automatic door openings, STANLEY is setting the standard for tough, dependable, long-lasting performance. Since we invented the first swing door operator in 1932, we've grown into the largest manufacturer, installer and service provider of automatic doors in North America.

From engineering and development, to product delivery and quality, STANLEY is constantly moving forward with innovative solutions you can depend on.



1931: STANLEY patents the world's 1st hands-free door operator actuated by photo-electric cells.



1968 : January, the STANLEY Magic Door division moves to its present facility in Farmington, CT.



1975 : STANLEY Magic Door introduces their first automatic sliding entrance.

1980's: STANLEY designs and fabricates Platform Screen Doors for Orlando International Airport.



2003 : Stanley Access Technologies buys Canadian door manufacturer, CJ Rush - a globally recognized leader in design and manufacturing Revolving Doors, Balanced Doors.

4 Manufacturing Facilities:

- Farmington, CT
- Indianapolis, IN
- Toronto, Ontario (Canada)
- Shanghai, China

29 US & Canada Field Operations and 12 Satellite Offices for full geographic coverage

40 Distributor Partners in US and Canada

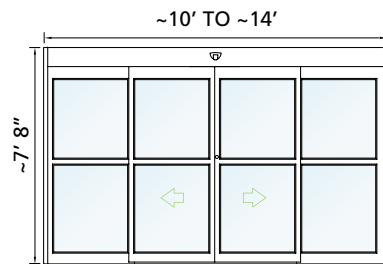
750+ technicians with an average of 12 years experience

Centralized support operations including:

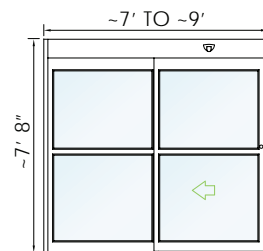
- Manufacturing (ISO Certified)
- Dedicated customer service / national account management
- Centralized service call center / technical support center



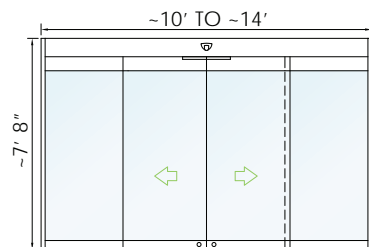
DURA-GLIDE 2000/3000 AND DURA-GLIDE 2000/3000 ALL GLASS



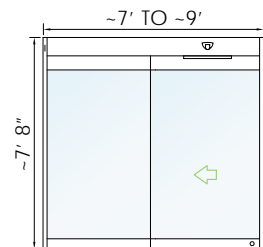
BIPART



SINGLE SLIDE



BIPART



SINGLE SLIDE

DIFFERENTIATION: The number one selling automatic door in North America. Highest horsepower motor in the industry, header crafted with high strength aluminum to prevent sagging. All components fully tested and pre-assembled at factory for fast, trouble-free installation.

AVAILABLE IN: Full breakaway and partial breakaway, Eco-friendly GreenStar, and operator only.

CLEAR DOOR OPENING: Bipart: 48.3" - 72.3" | Single Slide: 35.3" - 47.3"

DIFFERENTIATION: The beauty of an all glass door with the durability of a Dura-Glide. Integrated glass clamp hangers and pre-assembled header for fast and trouble-free installation.

CLEAR DOOR OPENING: Bipart: 48.3" - 72.3" | Single Slide: 35.3" - 47.3"



DURA-GLIDE GREEN START 2000/3000

DURA-GLIDE GREENSTAR 2000/3000

The average commercial building wastes 30% of the energy it consumes, causing customers and employees discomfort and eroding a company's bottom line with excessive heating and cooling costs. Until now...

Born from the Dura-Glide, North America's number one selling automatic sliding door, comes our most energy efficient door: newly designed to help you achieve your eco-friendly and energy saving goals.

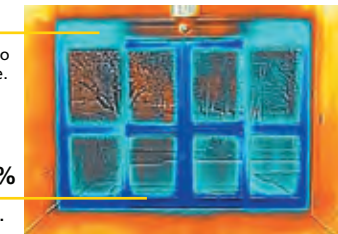
During night hours when the building is closed

Improved thermal performance with insulated glass

Specify based on your unique U-Factor requirements to minimize interior heat from conducting to the outside.

Decrease air infiltration by over 60%

GreenFit Sealing System. Meets ASTM E283.

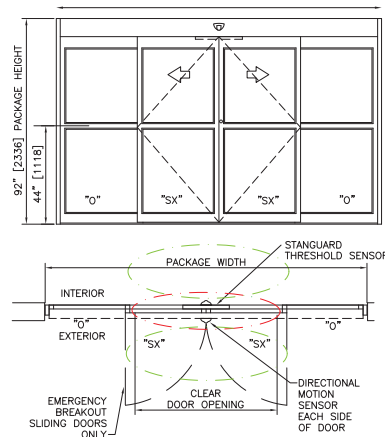


AFTER 1" Glass, GreenFit Sealing System

2000 BI-PART

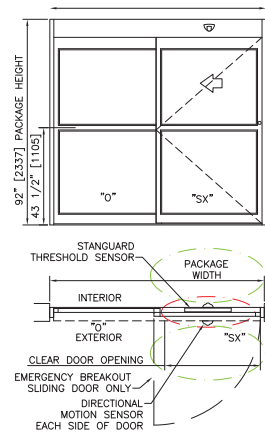
Only SX Sliding Panels Break Out

~10' TO ~14'



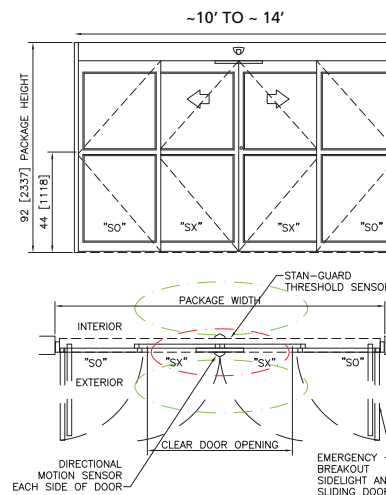
2000 SINGLE SLIDE

Only SX Sliding Panel Breaks Out ~7' TO ~9'



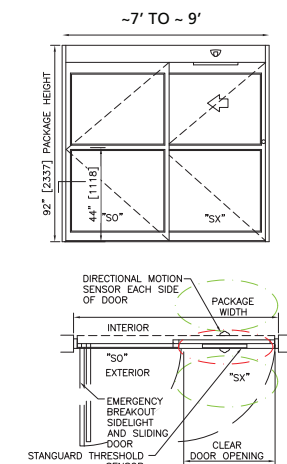
3000 BI-PART

All Panels Break Out ~10' TO ~14'

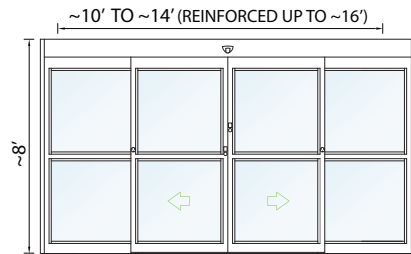


3000 SINGLE SLIDE

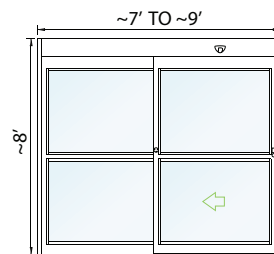
All Panels Break Out ~7' TO ~9'



LEVEL D AND LEVEL E HURRICANE RATED: DURA-STORM



BIPART



SINGLE SLIDE

AVAILABLE IN THE FOLLOWING CONFIGURATIONS:

Florida Building Code compliance, Miami-Dade County NOA Code Compliance and ASTM E283, and Level E hurricane rated.

CLEAR DOOR OPENING: Bipart 70.6" | Single Slide: 46.4"



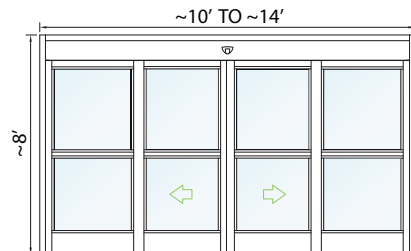
DIFFERENTIATION: Meets the most stringent building requirements for hurricane force winds and flying debris.

CLEAR DOOR OPENING:
Bipart 70.6" | Single Slide: 46.4"

APPLICATIONS: Enhanced security for buildings that need to withstand high wind pressure. Areas that lack hurricane codes can benefit by improving building integrity.

MORE INFORMATION: stanleyaccess.com/dura-storm

BLAST OR BALLISTIC RATES: DURA-SHIELD*



BIPART



SINGLE SLIDE



DIFFERENTIATION: Ballistic version provides protection from Level 3 ballistic (projectiles in flight) attacks. Complies with UL 752 (Standard for Bullet Resisting Equipment). Complies with all facets of ANSI 156.10 except emergency egress breakaway.

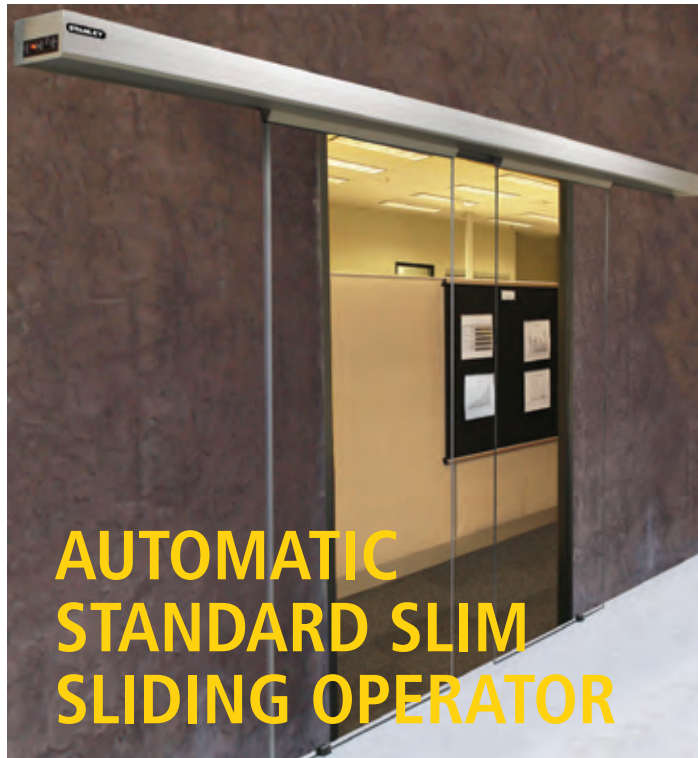
CLEAR DOOR OPENING: Bipart: 68 5/8"
Single Slide 36 1/16" to 42 1/16"

APPLICATIONS: Enhanced security for buildings where sliding automatic entrances are required to protect high-risk areas such as Emergency Rooms.

MORE INFORMATION:

stanleyaccess.com/blast-resistant
stanleyaccess.com/ballistic-resistant

* Contact STANLEY product experts prior to specifying



STANDARD SLIDING OPERATOR DG SLH

The **Dura-Glide SLH** is a slide door operator with a small header profile for discerning architects and application aesthetics. The SLH panels is ideal for unique applications where break out isn't required.

Proven motor and drive system engineered to accommodate new low profile design. This operator is available with optional glass hanger(s), or utility hanger(s) for a wide range of applications

DG - SLH is able to support 330 lb (150 kg) maximum moving panel weight with medium duty motor and stainless steel ball-bearing load wheels. The re-inforced belt drive gives the additional feature for the performance of operator.

CODES/STD: UL/cUL, ANSI

DIN Certification is available

HEAVY DUTY SLIDING OPERATOR DG UTILITY & AGNBO

For applications where breakout isn't required by NFPA 101, the Utility Package offers a Dura-Glide operator in a bi-part or single slide configuration

Standard package includes: header, header cover, end caps, clear-anodized finish, illuminated power switch, 3-position toggle function switch, step-down power supply, MC-521 Pro controller, drive motor, drive belt assembly, bumper stops and data port.

This package excludes door panels and break-out hardware. Unique and custom sized for heavy door weight.

AGNBO for frameless glass doors with glass clamps non break-out.





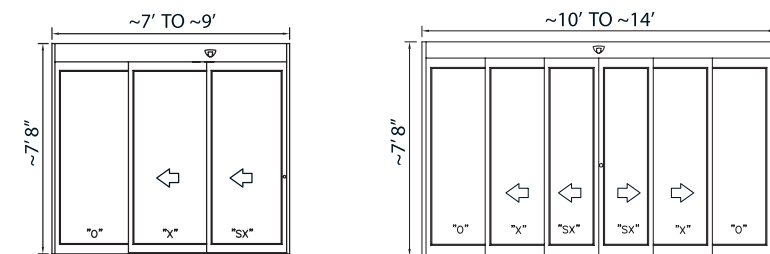
TELESCOPING 5200 / 5300

Differentiation: Larger clear door opening than a single slide or bipart sliding door. Synchronized moving panels. 5200 Model (drawing shown) SX panels break out. 5300 Model: All panels break out. Class 10 clean room certified.

Clear Door Opening: 3-Panel 44.56" to 60.56", 6-Panel: 59-9/16" to 91-9/16"

Applications: Clean rooms and high traffic retail, upscale professional and institutional locations where space is limited.

More information: stanleyaccess.com/telescopic-5200-5300



BIPART 6-PANEL

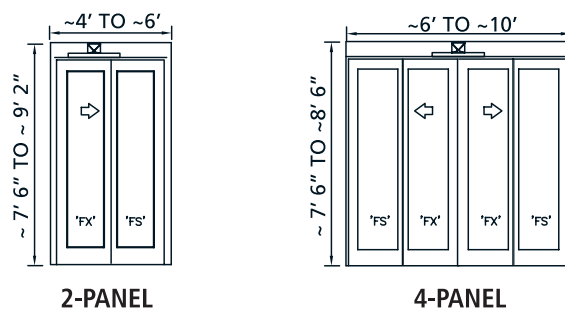
AUTOMATIC FOLDING DOOR

Differentiation: Allows for two-way traffic where there is a restricted rough opening. Panels fold when retracting which allows for about 70% of the door's package to be free and clear for passage.

Clear Door Opening: 2-panel 32.4" - 44.5", 4-panel 46.2" - 87.9"

Applications: Retrofit or new construction locations where there is two-way traffic and restricted rough openings.

More Information: stanleyaccess.com/bypass



2-PANEL

4-PANEL





MAGIC FORCE / MAGIC SWING - SWING DOOR OPERATORS

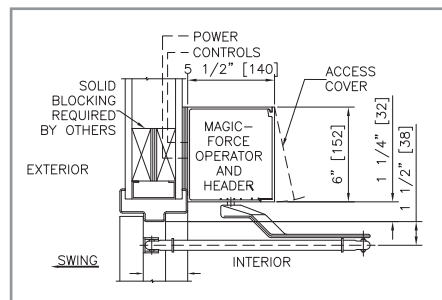
STANLEY Swing operators are the of choice for professionals who trust its long-lasting durability and dependable product performance.

The **Magic-Force** is our most versatile operator because it comes in a variety of mounting styles, integrates with a variety of sensors and systems and effortlessly adapts to the most diverse set of job site conditions including **full or low energy** and light to heavy duty usage.

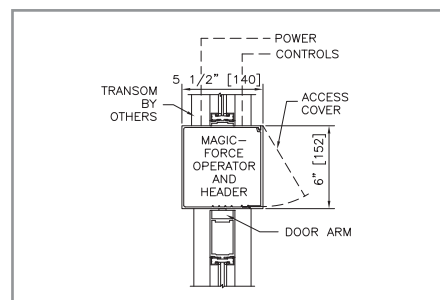
CODES AND STANDARDS : UL, cUL, ANSI/BHMA A156.10, ANSI/BHMA A156.19, IBC, NFPA 101, CSFM

STANLEY **Magic Swing** is fully automatic swing door operator built to withstand extreme environments, wind and stack pressure conditions, and abuse while maintaining smooth and controlled operation.

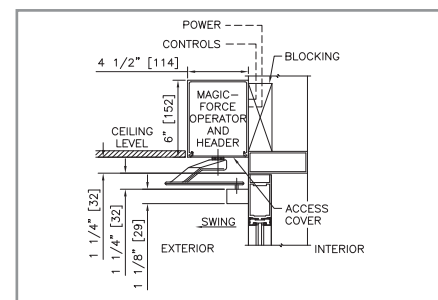
CODES AND STANDARDS : UL, cUL, ANSI A156.10, UBC, BOCA, ICBO, NFPA 101, CSFM



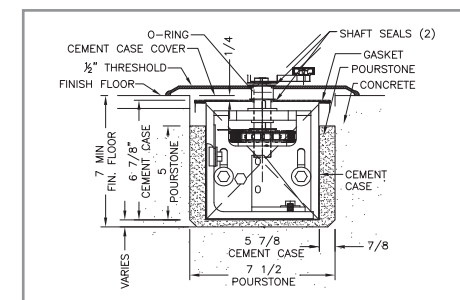
SURFACE MOUNT



CONCEALED



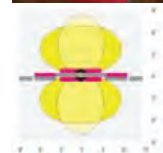
BOTTOM LOAD



IN GROUND

SAFETY SENSORS

- Low Energy: Swing-Guard LE option keeps the door open when a pedestrian is in its swing path.
- Full Energy: Swing-Guard FE* option and Sentrex-3* option (complete door system only) keeps the door open when a pedestrian is in its swing path and stays active when the door is in motion.



ACTIVATION

- Full Energy: SU-100 option provides a wide and deep activation zone to assure door remains fully open while someone is entering or exiting.
- Low Energy Options: Touch-less wave sensors, Push Plates, Radio Controls & Card Readers etc.,.

SELECTION GUIDE

Product Features

ICU DOOR PRODUCT FEATURES	SLIDING					SWINGING	
	ProCare 8300	ProCare 8300A	ProCare 8300BP	Dura-Care 7500A	Dura-Care 7500TL-FBO	Dura-Care 7400	Dura-Care 7600
Rough Opening Range	84.5"-108.5"	84.5"-108.5"	84.5"-144.5"	84.5"-108.5"	84.5"-108.5"	76"-100" (Pair)	84.5"-120.5"
Largest Clear Door Walk-Thru Opening ^[2]	50.2"	49.3"	65"	60.6"	55.5"	91.5" (Pair)	99.8"
Trackless Threshold	✓	✓	✓	✓	✓	✓	✓
Break Out Panels	All Panels	All Panels	All Panels	All Panels	All Panels	All Panels	All Panels
Panel Design Options	2-Panel	2-Panel	4-Panel	3-Panel	3-, & 6-Panel	Single, Pair & Uneven Pair	3-Panel
Synchronized Panels			✓	✓			
Automatic Operation		✓		✓			
Smoke & Draft Rated (UL 1784) Option	✓	✓	✓		3-Panel	✓	
2010 FGI Airborne Isolation Infection Room (Closer Required)	✓	✓	✓			✓	
Positive/Negative Pressure for Isolation Rooms	✓	✓	✓			✓	
STC Rated	✓	✓	✓				
New Catchless Handle	✓	✓	✓				
New Positive Latch Hook Shield	✓	✓	✓				
Optional Positive Latching	✓	✓	✓	✓ [*]	✓	✓	
Electronic Privacy Glass Option		✓			✓		
Integral Blinds Option	✓	✓	✓	✓	✓	✓	✓

1 Requires recommended STC rated glass

2 Without positive latch

*Electric Solenoid Lock

DISCLAIMER: These charts are to illustrate standard versions of our most popular products; for customized options and sizes, or additional panel configurations other than those shown please contact an authorized STANLEY representative.

Manual / Automatic Slide Trackless 2-Panel

PROCARE 8300

DIFFERENTIATION: Loaded with STANLEY exclusive features including a Swing Out Button, Swing Out Guidance System and Catch Free Contoured Handle, this 2-panel door has the widest clear door opening of any in the industry. These features allow patient transport and care to be the focus.

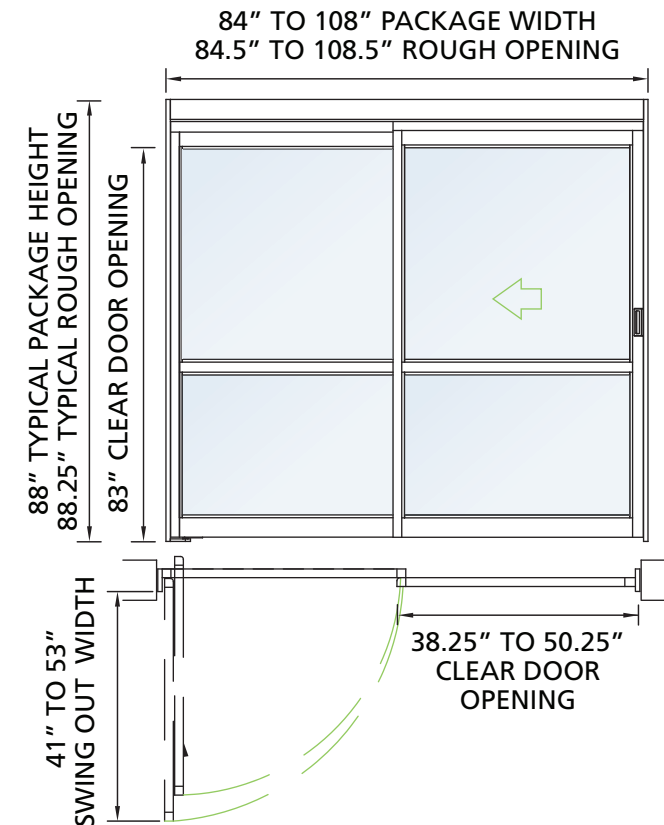
AVAILABLE IN: automatic with touchless activation for infection control

MORE INFORMATION: stanleyaccess.com/procare-8300

RATINGS*: Smoke & Draft, Infection Control, STC



** The typical ProCare 8300 configuration complies with the Buy American Act



STANDARD FEATURES

Swing Out Button (STANLEY Exclusive)
Swing Out Guidance System (STANLEY Exclusive)
Catch Free Contoured Handle (STANLEY exclusive)

* Restrictions may apply such as overall frame height, sliding/breakaway panel width and glazing.

** as specified in Section 52.225-1 and Section 52.225.11 of the Federal Acquisition Regulations as of August, 2017.

*** sidelite provided by a 3rd party

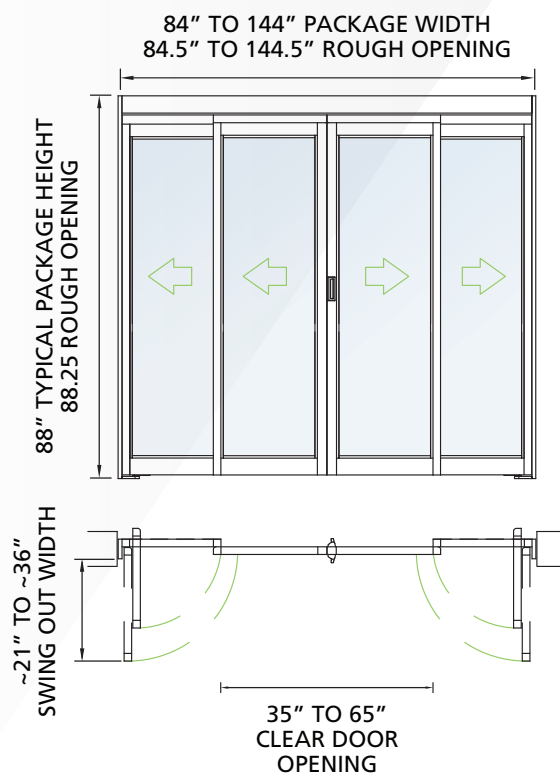
4-Panel Compact Bi-Part

PROCARE 8300BP

DIFFERENTIATION: The **space-optimizing ICU door solution**, this compact 4-panel bi-part is the newest alternative to the standard ICU door. With a smaller breakaway arc, you can meet NFPA corridor codes and **never have to give up a square inch of your patient room design**. Effortless **one-handed operation** slides both center panels simultaneously. Our exclusive soft open/close **prevents loud slamming** and extends the life of the door.

RATINGS*: Smoke & Draft, Infection control

MORE INFORMATION: stanleyaccess.com/procare-8300bp



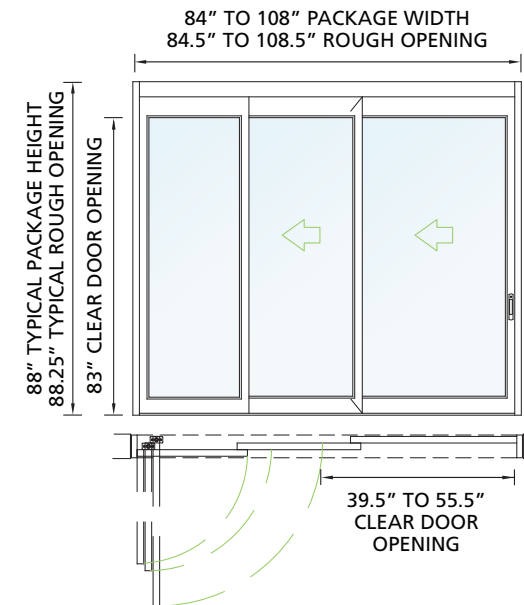
STANDARD FEATURES

- Swing Out Button (STANLEY Exclusive)
- Swing Out Guidance System (STANLEY Exclusive)
- Catch Free Contoured Handle (STANLEY Exclusive)
- Soft Open / Close (STANLEY Exclusive)

* Restrictions may apply such as overall frame height, sliding/breakaway panel width and glazing.

3-Panel Single Slide

DURA-CARE 7500 TL-FBO TELESOPING M/A



AVAILABLE IN: 6-panel bi-part and tracked versions

STANDARD FEATURES

Recessed Handle
Swing Out Lever

RATINGS*: Smoke & Draft

MORE INFORMATION:

stanleyaccess.com/duracare-7500series

Bone & Joint
Institute,
Perkins and
Hartford, CT
Will Architects



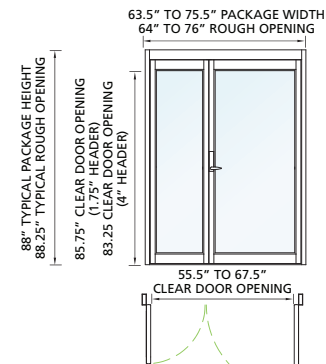
* Restrictions may apply such as overall frame height, sliding/breakaway panel width and glazing.
Note: Clear door opening is measured without positive latch

1 or 2 -Panel Swing

DURA-CARE 7400 MANUAL SWING



Uneven Pair



Pair



Single



** Clear door opening is measured without positive latch

* Restrictions may apply such as overall frame height, sliding/breakaway panel width and glazing.



Dura-Care 7400 Manual Swing

STANDARD FEATURE:
Positive latching standard

RATINGS*: Smoke and Draft

MORE INFORMATION:

stanleyaccess.com/manual-icu-ccu-swing

SOLUTIONS FOR

- › Rough Opening Width Range: ~84" - 108"
- › Clear Door Opening** Width Range: ~33" - 50"
- › Patient Privacy
- › Frequent Swing Out and Reset
- › Infection Control

APPLICATIONS

- › ICU/CCUs
- › Pressurized Isolation Rooms
- › Smoke Rated Rooms
- › Emergency Department Treatment Rooms
- › Pre/Post Surgery Rooms
- › Same Day Surgery Rooms
- › Trauma Rooms
- › Hospital Pharmacies
- › Operating Rooms
- › Corridors

Hermetically Sealed Doors

HERMETIC SLIDING / SWING DOORS / X-RAY ROOM DOOR



**HERMETIC
MANUAL / AUTOMATIC DOORS**

STANLEY provides hermetically sealed door product range in both manual and automatic versions for Hospitals, including doors for operating theatres, labs, radiology rooms and controlled access areas. These doors feature specific technical characteristics and multiple accessories. The panels are made with the most suitable materials for the required use, such as: Laminate, stainless steel, porcelain steel, or glasses with specific noise reduction.

The high reliability of the automatic operator, which safely control all the integrated systems, make the doors a significant element of the operating theatres. The door provide safety during door opening and closing, meeting the requirements of the personnel who need to be able to access the room without contact with the leaf.

The shape of the profile and panel system prevents the deposit of dust and eases cleaning. Hermetic doors are equipped with accessories by modern technology.

The vision panel is coplanar with the panel and can be provided in different dimensions and shapes, even with x-ray protection and handles featuring different types and materials.



High Pressure Laminate doors

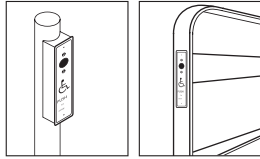


Stainless Steel finish
Hermetically sealed
Swing doors



AUTOMATIC DOOR OPTIONS AND ACCESSORIES

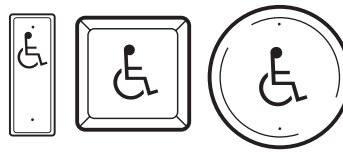
LOW ENERGY CONTROLS AND ACTIVATION



RAIL



RADIO



PUSH



TOUCHLESS WAVE

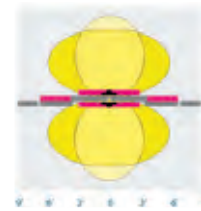
SENSORS: SWING, SLIDE AND FOLD DOORS



SWING DOORS:
LOW ENERGY PRESENCE SENSORS
Swing-Guard LE keeps the door open when a pedestrian is in its swing path.



SWING DOORS: FULLY AUTOMATIC PRESENCE SENSORS
Swing-Guard FE is designed to detect moving or stationary people in the swing path of the door and stays active even when the door is in motion.



are fully opened while someone is entering or exiting.

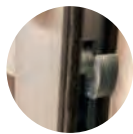
SLIDE DOORS: MOTION ACTIVATION
SU-100 provides a wide and deep activation zone to assure doors

SLIDE DOORS: PRESENCE
Stan-Guard is a threshold sensor and a doorway holding beam that detects people or objects in the door area and holds the doors open until the threshold area is clear.

SECURITY: SWING, SLIDE AND FOLD DOORS



LOCK GUARD wraps around the lead stiles, adding rigid reinforcement in the event of forced entry.



ARMORED STRIKE RETROFIT KIT is designed for bi-parting doors currently utilizing standard 4-lamination lock with 2-point locking.



SECURITY STROBES act as a visual deterrent for unauthorized entry.



DELAYED EGRESS FOR DURA-GLIDE denies exit to unauthorized personnel for 15-30 seconds while an alarm sounds.



JAMB CAMERA is a low profile camera mounted to the door jamb.



UNINTERRUPTED POWER SUPPLY provides continued operation of automatic slide and swing door operators for up to 1.5 hours.



THE STAN-CAM™ Camera provides a continuous video signal of the area surrounding the door's opening, including the threshold.



STANLEY REVOLVERS AND CUSTOM ENTRANCES

STANLEY®

WHEN IT COMES TO AUTOMATIC DOOR OPENINGS, STANLEY IS SETTING THE STANDARD FOR TOUGH, DEPENDABLE, LONG-LASTING PERFORMANCE. SINCE WE INVENTED THE FIRST SWING DOOR OPERATOR IN 1932, WE'VE GROWN INTO THE LARGEST MANUFACTURER, INSTALLER AND SERVICE PROVIDER OF AUTOMATIC DOORS IN NORTH AMERICA.

AUTOMATIC / MANUAL / SECURITY REVOLVING DOORS

A versatile Manual / Automatic revolving door designed for use in a variety of applications such as office buildings, restaurants, and banks. Standard models available in 7' diameter or custom models ranging from (but not limited to) 6' diameter to 9'-0" diameter. In addition to the standard revolvers, STANLEY also provides all glass wings revolving doors so there are no visible door stiles. Lower collapsing mechanisms are concealed and directly connected to door rails. The revolving doors are available to GEM markets in both ANSI & EN Standards.

4500 Three- or Four-Wing Manual Security Revolving Door: Provides rapid, simultaneous two-way passage for authorized personnel.

4900 ASR Automatic Security Revolving Door: Provides antitailgating and optional anti-piggybacking detection through the use of Time-of-Flight technology. Available in 4-wing design.



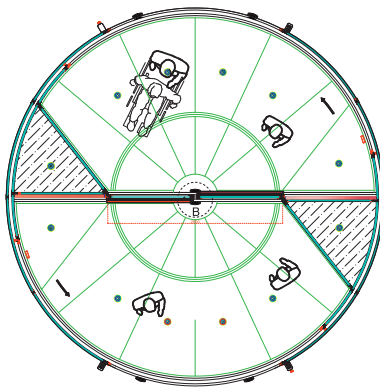
REVOLVING DOORS ALWAYS OPEN, ALWAYS CLOSED

Air infiltration through revolving door is 1/10th of that through a swing or sliding door and maintains the HVAC Integrity of the building in both hot and cold climate.

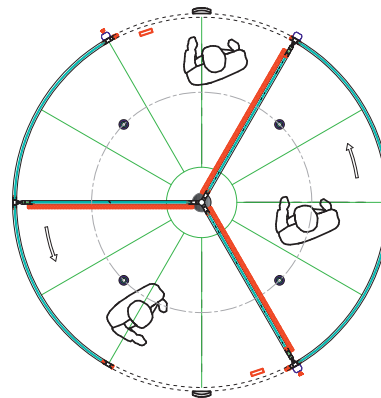
Revolving door allow optimum traffic processing - 2880 persons in and 2880 persons out per hour while reducing airborne dust, dirt and noise. STANLEY'S qualified team will assist the designers in capturing the aesthetic of design within the parameters of budget and schedule.

Available configurations are of 2 leaf, 3 leaf or 4 leaf. Large diameter revolvers are available with or without showcase.

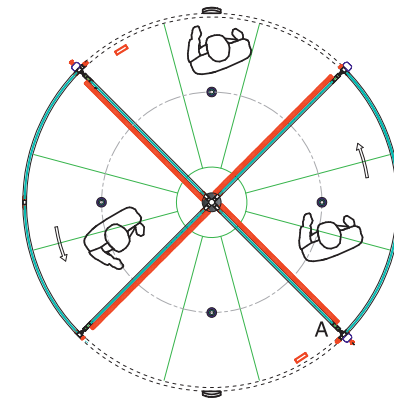
All Glass, Metal Framed, Economy or Prestigious, the limits are yours.



2 WING REVOLVING



3 WING REVOLVING



4 WING REVOLVING

FULL CIRCLE / SEMI CIRCLE / SEGMENTED CURVE SLIDING DOORS

STANLEY Circular sliding doors offers in different versions like full circle, semi-circle or segmented. In segmented and semi-circle both concave and convex configurations are available. The safety vertical photocells provides the entire movement are of the leaf safe. Circular or segmented sliding doors are manufactured with high level of durability and aesthetic concerns. Variety of surface finishes are available for selection along with laminated or tempered safety glass options.



STANLEY®

STANLEY RUSH BALANCED DOORS



Designed to assist opening and control door movement in site circumstances with wind tunnel or stack effect.

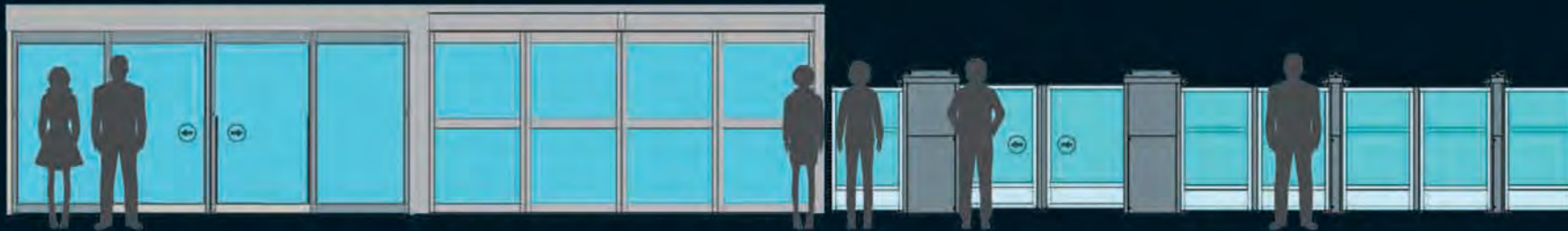
STANLEY RUSH PIVOT



An excellent selection for applications that require a large opening with minimal floor space interruption. Pins are located at the top and bottom of the frame, allowing the door to pivot (shown left).



AUTOMATIC TRANSIT DOORS



For over 25 years, STANLEY Access Technologies has been designing, fabricating and installing state-of-the-art transit systems. Our platform screen doors and platform screen gates are found on automated people mover systems in Airports, Metros and Commercial properties throughout the United States and around the world.





CONTACT

StanleyAccess.com

Mainline: 1-800-7-ACCESS

Service: 1-800-DOOR-444

stanleyaccess.com/contact

LOCAL REPRESENTATIVE CONTACT

Find your local STANLEY Representative: stanleyaccess.com/general-questions-sales-information

A DIVISION OF:

STANLEY
Security

STANLEY Security, a division of STANLEY Black & Decker (NYSE: SWK), is a provider of integrated security solutions defining the future of the security industry. STANLEY delivers a comprehensive suite of security products, software and integrated systems with a strong emphasis on service. As the world's second largest security provider, we're protecting what's important to you by designing, installing, servicing and monitoring an extensive array of products and solutions that span the entire security spectrum:

- Intrusion, Fire, Access Control and Video Surveillance Systems
- Systems Integration
- Automatic Entrance Solutions
- Safe Lock & Vault Solutions
- RTLS Asset Visibility Solutions
- Iris Biometric Identity Authentication Solutions
- UL & Bilingual ULC Monitoring Services

To learn more about STANLEY Security Products and Solutions, visit www.stanleysecurity.com.