



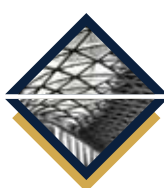
ATLAS STAR
ALUMINIUM & GLASS

**COMPLETE
FAÇADE
SOLUTIONS**

P R E Q U A L I F I C A T I O N



ALUMINIUM &
GLAZING WORKS



STRUCTURAL
&
ARCHITECTURAL
STEEL WORKS



DECORATIVE
&
ARCHITECTURAL
S.S WORKS



AUTOMATIC
ENTRANCE SYSTEM



www.atlasstaruae.com



T O G E T H E R
WE SHAPE YOUR INDUSTRY



ABOUT US

VISION, MISSION & VALUES

SCOPE OF OPERATIONS

OUR SERVICES

LIST OF MACHINERIES

ORGANIZATION CHART

QUALITY CONTROL

QUALITY POLICY

HSE QUALITY & PROCEDURE

CERTIFICATES & ACCREDITATIONS

OUR PROJECTS

OUR CLIENTS



ABOUT US

ATLASSTAR ALUMINIUM & GLASS is the growing Manufacturer, Supplier and Installer of Glass & Aluminium work for commercial and domestic markets. From a very modest and humble beginning in the year 2016, **ATLAS STAR ALUMINIUM & GLASS** has successfully emerged in the UAE as an Architectural Glass & Aluminium Company. Our products are an amalgamation of premium quality and superior workmanship. We have assiduously provided our clients with customized products that have been fabricated with the most contemporary technology at every stage of its production. Our automation and monitoring methods are unfailing and are always inclined towards minimizing energy loss and also ensuring the stability of the indoor climate.

We will always strive our level best to maintain the acclaimed position in the industry. Our systematic approach to project planning along with uncompromising standardization and quality procedures always help us in delivering superlative products to all our customers.

ATLASSTAR ALUMINIUM & GLASS is a designer, fabricator and installer of framed architectural aluminium products including windows, doors, curtain walls, skylights and related façade solutions. Our manufacturing units are fully equipped with the most modern types of machinery and a proficient team for all kinds of aluminium and glazing works.

OUR MISSION

Our company ventures to manufacture, supply and install glass and aluminium works and also promotes core values like quality, innovation and prompt service. Regardless of the scope and size of the projects we handle, our highly experienced engineers and technicians always pay utmost care and contemplation to it. We provide sustainable and high-performance facade solutions to all our clients based on their requirements.

OUR VISION

ATLASSTAR aims to become the most preferred choice in the construction industry, constantly trying to excel in quality, craftsmanship and also in keeping up the promise of delivering on time.

OUR VALUES

The core values of our company are

- Reliability
- Accountability
- Honesty
- Professionalism
- Transparency

SCOPE OF OPERATIONS

Aluminium & Glazing Works

ATLASSTAR Aluminium & Glass is a designer, fabricator and installer of framed architectural aluminium products including windows, doors, curtain walls, skylights and related façade solutions. We have a manufacturing unit fully equipped with the most modern types of machinery and a proficient team for all kinds of aluminium and glazing works.



Architectural & Structural Steel Works

Atlas Steel is a subsidiary of Atlas Star Aluminium and Glass located in Musaffah Industrial Area, Abu Dhabi - since 2016. Steel can be fabricated to any color, shape and finish. Structural steel is made out of elements that can support the design load of the building and also fit and align with the building's structural frame. We are specialized in Structural Steel Fabrications and all types of steel jobs for

various industries like Construction, Food Industry and Manufacturing Company, Villas & Residential Units etc. We do all kinds of Structural Steel Turnkey Projects, Survey, Design, Analysis, Fabrication, Supply, and Installation of various Steel Products as per client requirements. We deliver the most gratifying and exceptional structural steel projects at your disposal.

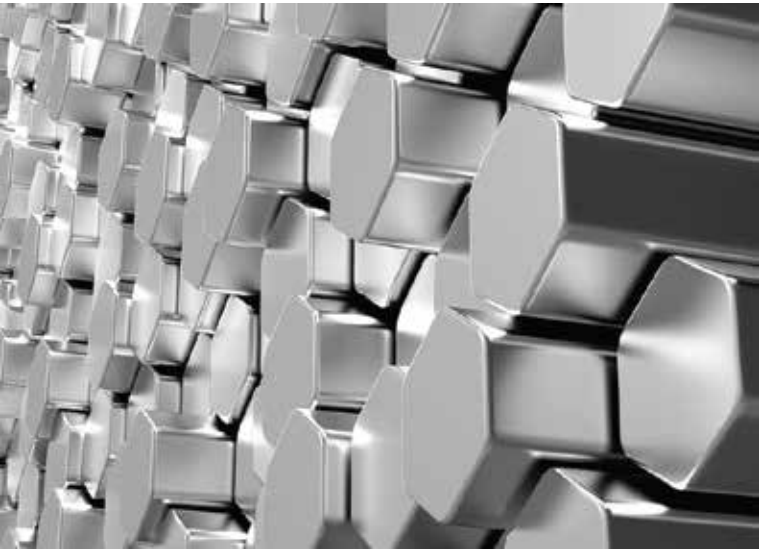
Automatic Entrance System

Automatic doors are desideratum for commercial buildings and workplaces. They are indispensable for the smooth flow of people allowing safe and comfortable access to the general public and workforce. It augments the modern requirements of interior design too. We diligently provide you with completely sustainable and fully automatic entrance systems.



Combined with extensive quality, maintenance and latest technology, all of our products can be optimized for any requirements, such as automation and monitoring, minimizing energy loss and ensuring the stability of the indoor climate, providing you with complete and sustainable entrance solutions.

Our below listed wide range of products & applications helps the customer with comfortable pricing. Moreover, to help the end-users, we offer Annual Maintenance Contracts. We can bestow you with our team of technicians who have pronounced experience and sound knowledge in the industry.



Decorative & Architectural Stainless Steel works

Architectural & decorative Stainless Steel works in big & small projects since reaching the optimal result in this domain needs time and efforts. With you choosing **Atlasstar** to implement your project, you will save time and effort, thanks to our expert team in implementing exterior & interior Stainless Steel works with all required materials & finish as per your requirements. We have a complete qualified team that draws designs conforming to your needs. We own equipment and machinery developed to meet your needs as per required dimensions in addition, we work as per the production management to meet your all

kinds of requirements in big and small projects, all in best quality, modern designs and different colours. You can also gain access to after sale services to all our products. Note that all our products are eco-friendly.



Signs & Graphics

Signs and graphics are everywhere. You can effortlessly liaise with the public using proper signage. We are here to help your brand and its message stand out.

Our successful implementation of numerous architectural signages, environmental graphics and corporate identity programs with global marketing implication has gained us recognition along with a solid reputation for excellence in quality and services. So as to meet the needs of the most discerning of clientele with sincerity, responsiveness,

diligence and professionalism. Our signage is a fully integrated manufacturer of architectural, corporate and environmental signage and graphics.

1

LARGE FORMAT
PRINTING
& APPLICATIONS

2

STATIC SIGNS

3

ARCHITECTURAL SIGNS

4

3D SIGNS (ILLUMINATED
& NON-ILLUMINATED)

5

TRAFFIC SIGNS

LARGE FORMAT PRINTING AND APPLICATIONS

We have large format printing and applications that can produce good quality promotional materials for you.

STATIC SIGNS

Static signs are a cheaper but effective method to broadcast information and messages. Once fabricated, they can stay in place for years and not need any maintenance.

ARCHITECTURAL SIGNS

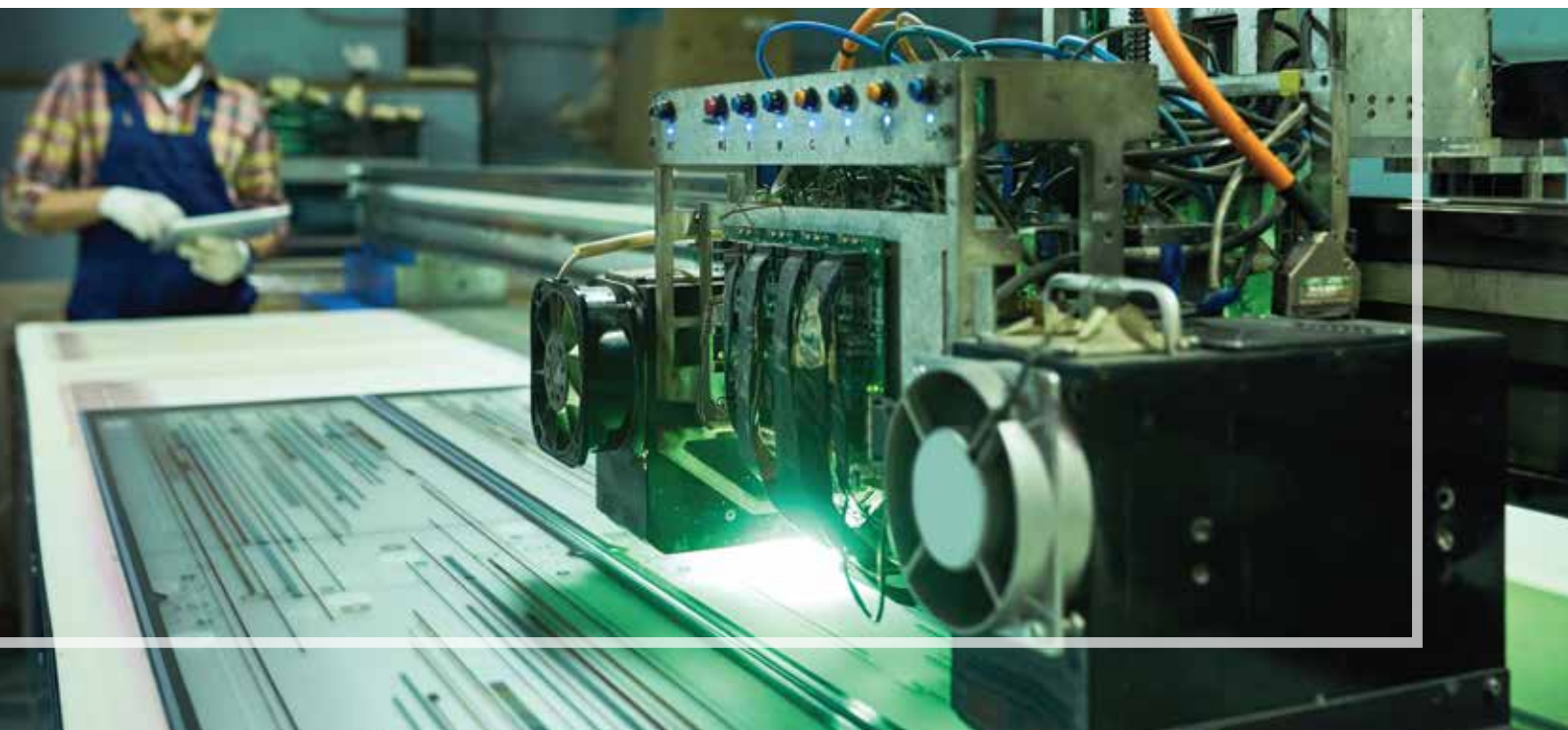
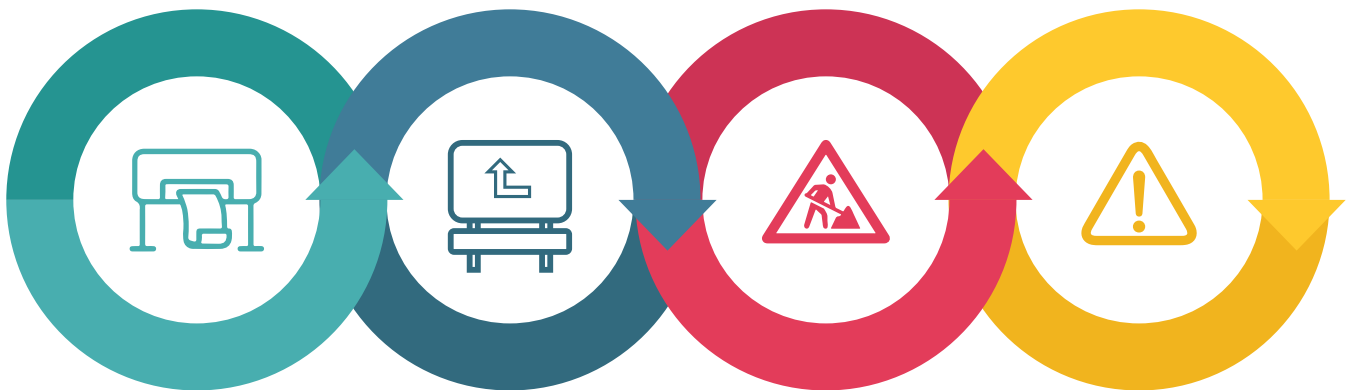
Good architectural signage is all about design, quality and code compliance. We have combined all this in our design and manufacturing of signages. Please be assured that you will receive architectural signages that are professionally appealing and complements the design and decor of the building.

3D SIGNS (ILLUMINATED AND NON-ILLUMINATED)

Make your business stand out with the help of our eye-catching 3D signs. We have both illuminated and non-illuminated signs at your disposal. We have experienced hands who can design, manufacture, install and maintain all kinds of signs.

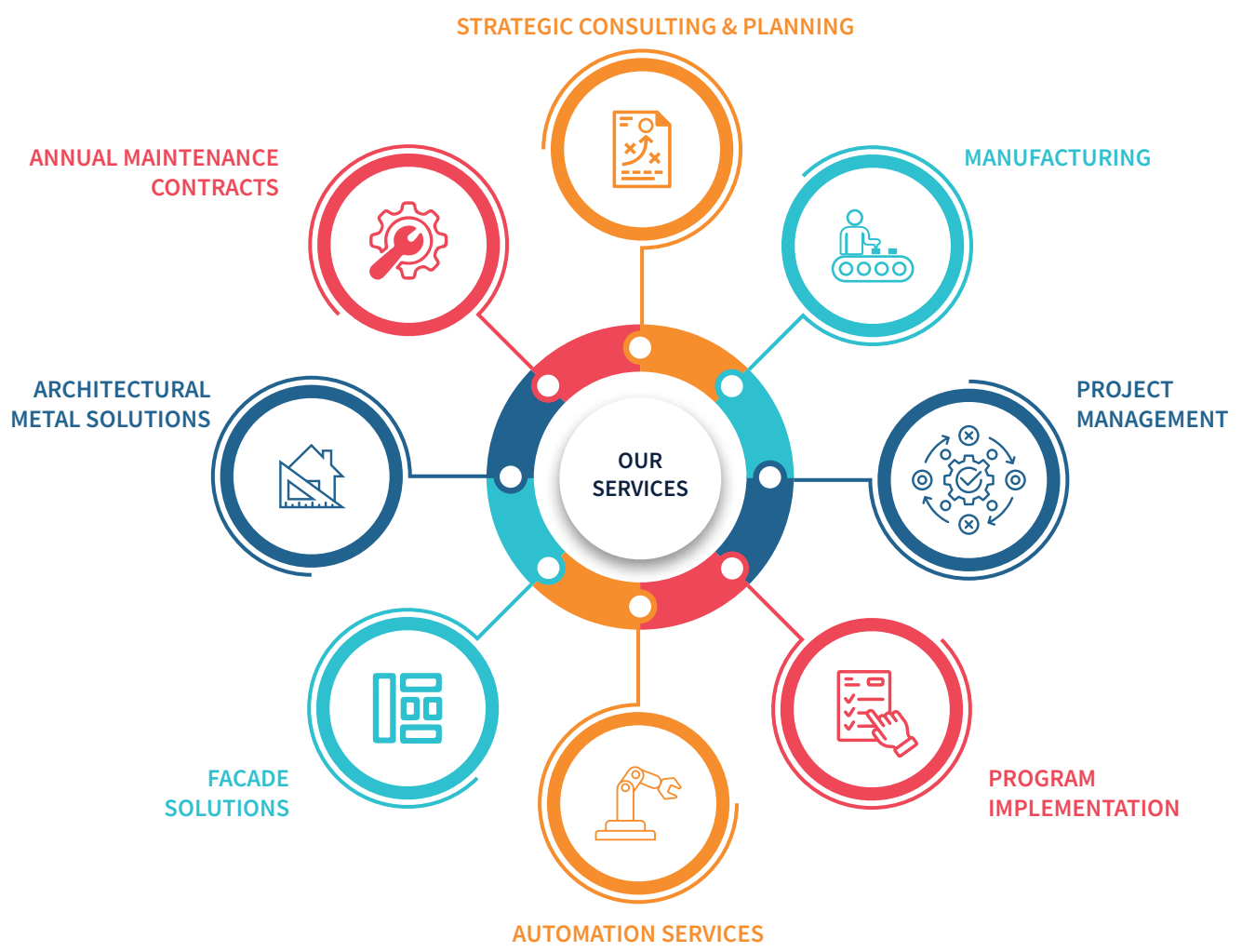
TRAFFIC SIGNS

No road can survive without proper traffic signs. It is an effective control device for traffic. Traffic signs should be made sturdy as they have to withstand all kinds of weather conditions.





OUR SERVICES



STRATEGIC CONSULTING & PLANNING

We liaise with the architects, developers and design consultants from the early stages and strategically plan our projects for the attainment of a shared goal.

MANUFACTURING

We process raw materials into finished goods with the use of machinery and human labour in the best possible way.

PROJECT MANAGEMENT



We have the right team of people to achieve goals and deliver projects at the specified time. We assiduously take care of the primary constraints like scope, time and budget.

PROGRAM IMPLEMENTATION



We make sure that all our project plans are well executed after proper evaluation, visioning and planning and also by allocating the right resources at every step of the process.

AUTOMATION SERVICES



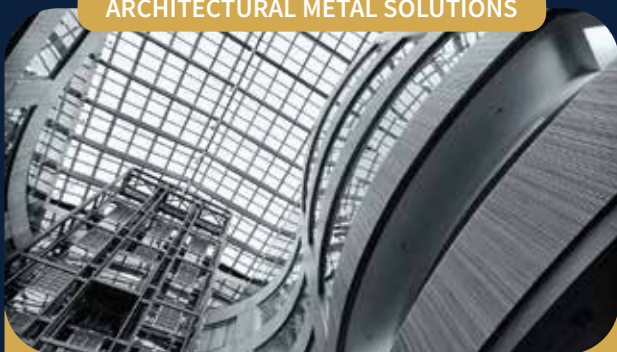
Combined with extensive quality, maintenance and latest technology, all of our products can be optimized for any requirements, such as automation and monitoring, etc...

FACADE SOLUTIONS



We do all kinds of facade works including structural steel, glass & aluminium, Aluminium Composite Panel, fabrication and design works as per client requirements.

ARCHITECTURAL METAL SOLUTIONS



All kinds of architectural metal finishes which is a treat for architectural interior designers & engineers around the world. They are a sustainable alternative to wood, fabric, or marble.

ANNUAL MAINTENANCE CONTRACT



Irrespective of the time or situation you can ensure that you will have an expert from our side to address and resolve your problem.

LIST OF MACHINERIES

> ALUMINIUM & CLADDING

NO.	MACHINERIES	QTY.
01	Automatic CNC Profile Cutting Machine	01
02	Corner Crimping Machine	01
03	Freezing Machine	02
04	Manual Cutting Machine	02
05	Drilling Machine	02
06	Shearing Machine	01
07	Sheet Bending Machine	01
08	Composite Cladding Routing Machine	01
09	ACP cutting & grooving Machine	01

> GLASS PLANTS

NO.	MACHINERIES	QTY.
01	Glass Cutting tables	03
02	Polishing Machines	02
03	Vertical Glass Washing Machine	03
04	Bevelling Machine	01
05	Automatic Sandblasting Machine	01
06	Glass Drilling Machine	02
07	Doubling Silicone Machine	02
08	Manual Polishing Machine	02
09	CNC Glass cutting Machine	01

> SIGNS & GRAPHICS

NO.	MACHINERIES	QTY.
01	CNC Router	01
02	Acrylic Laser Cutting Machine	01
03	Acid Etching Machine	01
04	Engraving Machine	01
05	Stainless Steel Welding Machine	02
06	Aluminium Welding Machine	01
07	Digital Printing Machine	02
08	Lamination Machine	01
09	Plotter	01
10	UV Printing Machine (Flat Bed & Roll)	01

ORGANIZATION CHART





QUALITY CONTROL

Our quality control policy is driven by the following management principles.

- Guarantee that the quality of all equipment, materials and systems utilized in the construction, manufacturing and operation in our industry is the finest that is available in the industry.
- We comply with all relevant quality standards and regulations.
- Our company assure to rigorously verify materials, parts and final products through independent checks, audits and inspections.
- We religiously follow quality assurance and quality control (QA/QC) both at manufacturers' facilities and on-site during the construction process.

QUALITY POLICY

ATLASSTAR ALUMINIUM & GLASS is involved in the safety and health of people and the protection of the environment as a key factor while meeting its strategic objectives to increase the standard level and quality of its supplied products and services in order to satisfy the customer needs.

The Management and Staff of **ATLASSTAR** are committed to:

- Establish, implement and maintain a QHSE Policy that is appropriate to the purpose and context of the organization and supports its strategic direction.
- The continual improvement for its Safety, Health, Environmental and Quality performance standards and to protect the environment and the associated health and safety of its employees, customers, suppliers, and the public. Only through the cooperative effort of all can the best possible QHSE record be achieved.
- Provide and maintain safe, environmental and healthy working conditions for all our employees, who are the company's most valuable asset.
- Appropriate objectives and targets are established and QHSE management programs are formulated.
- Consult, communicate and collaborate with employees and other stakeholders on QHSE matters and QHSE Performance.

- The continual improvement for its Safety, Health, Environmental and Quality performance standards and to protect the environment and the associated health and safety of its employees, customers, suppliers, and the public.
- Prevent injury and ill health to its employees and other interested parties by eliminating hazards and reducing OH&S risks.
- Provide appropriate tools, equipment, operational processes, a safe system of work covering all our activities and support reasonably required to ensure success.
- Prevent incidents, accidents, injuries, illnesses, environmental impacts and provide high-quality products.
- Where there are risks to safety, health and environment, Aspects need to be assessed under specific duty or regulations. We will ensure that our assessments are carried out and that all actions shown to be necessary will be implemented.
- Comply with the applicable local and federal regulations, customer requirements and maintain a safe and pollution-free operating practice that complies with the applicable UAE legal and other client requirements.

ATLASSTAR communicates this policy to all employees through training and daily management activities, both to ensure their understanding and to ensure that the policy is properly upheld. Our policy is made available to relevant interested parties upon request.

HSE POLICY AND PROCEDURE

ATLASSTAR is obliged to obey all the health, safety and environmental regulations of our country.

We shall

- Ensure that regular audits in our facility are completed and any issue relating to the health and safety of the employees are responded to promptly.
- Continue to be a socially responsible company and protect the environment and prevent polluting it by efficiently managing the waste and also optimum utilization of resources.
- Safeguard the health and safety of the workforce and prevent ill health and injury by implementing safe and healthy workplace practices.
- Ensure all the machines and equipment used in the industry are suitable for the intended purposes and meets necessary safety requirements.



A hand in a dark blue suit jacket and red tie points towards a cluster of interlocking gears. The gears are in shades of blue, grey, and red. The text 'CERTIFICATES & ACCREDITATIONS' is overlaid in white, bold, sans-serif font. A small white arrow points to the right, positioned over one of the gears.

CERTIFICATES & ACCREDITATIONS

TRADE LICENSE

مركز أبوظبي للأعمال
Abu Dhabi Business Center



دائرة التنمية الاقتصادية
DEPARTMENT OF ECONOMIC DEVELOPMENT



Commercial License

Emerging Economic Establishment

رخصة تجارية

منشأة اقتصادية ناشئة

License No	:	CN-2191834	:	رقم الرخصة
ADCCI No	:	348585	:	عضوية الغرفة
Establishment Card MOHRE	:	894266	:	وزارة الموارد البشرية والتوطين بطاقة المنشأة
Establishment Card GDRFA	:		:	الإدارة العامة للإقامة وشؤون الأجانب - بطاقة المنشأة
Legal Form	:	Establishment	:	الشكل القانوني مؤسسة فردية
Trade Name	:	ATLAS STAR ALUMINIUM & GLASS	:	الاسم التجاري اتلس ستار للألومنيوم والزجاج
Establishment Date	:	20/10/2016	:	تاريخ تأسيس المنشأة
Issue Date	:	18/09/2021	:	تاريخ الإصدار
Expiry Date	:	16/10/2024	:	تاريخ الانتهاء

الصفة Role	الجنسية Nationality	الملاك / الشركاء Owners / Partners	الرمز No.
مالك Owner	الهند India	ساجيث اكيل كونجيرامان فيلوا كاندي SAJITH KUNHIRAMAN VELLUVA KANDY AKKEEL	41503498
وكيل خدمات Sponsor	الإمارات العربية المتحدة United Arab Emirates	سعيد علي ربيع هلال المزروعى SAEED ALI RUBAYYEA HELAL ALMAZROUEI	20023367

Commercial Activities : الأنشطة التجارية :
 - Metal and Iron Works - الأعمال المعدنية والحديدية
 - Glass Plates Installation Works - أعمال تركيبات الألواح الزجاجية
 - Aluminium Installation Works - أعمال تركيبات الألمنيوم
Address : العنوان : المصفح, م 12, 0 : مبنى السيد عبدالله محمد علي و اخرين
 (تم تحصيل رسوم خدمات الدفاع المدني)


وثيقة معتمدة وصادرة بدون توقيع أو ختم من دائرة التنمية الاقتصادية - أبوظبي. للتحقق من صحة البيانات الواردة في الرخصة برجاء زيارة الموقع www.adbc.gov.ae
 Approved document issued without signature or stamp by the Department of Economic Development - Abu Dhabi. To verify the license kindly visit www.adbc.gov.ae

Official Email : Sajithsp916@gmail.com البريد الإلكتروني الرسمي :
 Official Mobile : 971566122002 رقم التواصل الرسمي :



www.adbc.gov.ae

➤ ISO CERTIFICATES



Certificate Of Registration

Awarded to

ATLAS STAR ALUMINIUM& GLASS

at

P.O.BOX: 108096, MUSAFFAH 12, ABU DHABI, UAE

Quality Registrar Systems certify that the management system of the above organization has been audited and found to be in compliance with the QRS requirements for registration of the management system standard detailed below:


ISO 9001:2015

Quality Management Systems


Scope of work

- METAL AND IRON WORKS
- GLASS PLATES INSTALLATION WORKS
- ALUMINIUM INSTALLATION WORKS

IAF 28
Certificate No: AAU-2320
Originally Registered: 06 JUN 2022
Latest Issue: 06 JUN 2022
Valid up-to: 05 JUN 2023





Quality Registrar Systems



GLOBAL HEADQUARTERS

Accreditation Service for Certifying Bodies, LLC
8 The Green, Dover, DE, 19901,
United States
www.ascb.com



UAE OFFICE ADDRESS

Quality Registrar Systems Intl.
Abu Dhabi, United Arab Emirates
www.qrs-intl.com
Tel: 02-3096166

WORLDWIDE CERTIFICATION

This is an accredited certificate authorized for issue by Accreditation Service for Certifying Bodies (Europe) Limited who have accessed QRS (Intl.) as a Certifying Body for compliance with ISO 17021:2015 'Conformity Assessment - Requirements for bodies providing audit and certification of management systems. This certificate is only valid when confirmed by the register listed in the QRS (Intl.) (qrs-intl.com)



Certificate Of Registration

Awarded to

ATLAS STAR ALUMINIUM & GLASS

at

P.O.BOX: 108096, MUSAFFAH 12, ABU DHABI, UAE

Quality Registrar Systems certify that the management system of the above organization has been audited and found to be in compliance with the QRS requirements for registration of the management system standard detailed below:

ISO 14001:2015

Environmental Management Systems

Scope of work

- METAL AND IRON WORKS
- GLASS PLATES INSTALLATION WORKS
- ALUMINIUM INSTALLATION WORKS

IAF 28

Certificate No: AAU-5882

Originally Registered: 06 JUN 2022

Latest Issue: 06 JUN 2022

Valid up-to: 05 JUN 2023



Quality Registrar Systems

GLOBAL HEADQUARTERS

Accreditation Service for Certifying Bodies, LLC
8 The Green, Dover, DE, 19901,
United States
www.ascb.com



WORLDWIDE CERTIFICATION

UAE OFFICE ADDRESS

Quality Registrar Systems Intl.
Abu Dhabi, United Arab Emirates
www.qrs-intl.com
Tel: 02-3096166

This is an accredited certificate authorized for issue by Accreditation Service for Certifying Bodies (Europe) Limited who have accessed QRS (Intl.) as a Certifying Body for compliance with ISO 17021:2015 'Conformity Assessment - Requirements for bodies providing audit and certification of management systems. This certificate is only valid when confirmed by the register listed in the QRS (Intl.) (qrs-intl.com)



Certificate Of Registration

Awarded to

ATLAS STAR ALUMINIUM& GLASS

at

P.O.BOX: 108096, MUSAFFAH 12, ABU DHABI, UAE

Quality Registrar Systems certify that the management system of the above organization has been audited and found to be in compliance with the QRS requirements for registration of the management system standard detailed below:

ISO 45001:2018

Occupational Health and Safety Management Systems

Scope of work

- METAL AND IRON WORKS
- GLASS PLATES INSTALLATION WORKS
- ALUMINIUM INSTALLATION WORKS

IAF 28

Certificate No: AAU-3981

Originally Registered: 06 JUN 2022

Latest Issue: 06 JUN 2022

Valid up-to: 05 JUN 2023



Quality Registrar Systems



GLOBAL HEADQUARTERS

Accreditation Service for Certifying Bodies, LLC
8 The Green, Dover, DE, 19901,
United States
www.ascb.com



UAE OFFICE ADDRESS

Quality Registrar Systems Intl.
Abu Dhabi, United Arab Emirates
www.qrs-intl.com
Tel: 02-3096166

WORLDWIDE CERTIFICATION

This is an accredited certificate authorized for issue by Accreditation Service for Certifying Bodies (Europe) Limited who have accessed QRS (Intl.) as a Certifying Body for compliance with ISO 17021:2015 'Conformity Assessment - Requirements for bodies providing audit and certification of management systems. This certificate is only valid when confirmed by the register listed in the QRS (Intl.) (qrs-intl.com)

PROJECT LIST & REPRESENTATIONS



➤ **ATLAS STAR - 2022**

NO.	PROJECT	LOCATION	MAIN CONTRACTOR	CONSULTANT/ CLIENT
01	Aluminium & Glazing Work @klp 4 & 5 Kizad Port.-abudhabi	Abu Dhabi	Trojan Gen. Contracting LLC	Al Wasl Al Jadeed Consultants
02	SS Glass Handrail Work @ Al Foah Al Ain	Al Ain	Rosetta Stone Decoratrion	-
03	Aluminium Glazing Work @ Saadiyat	Albu Dhabi	Al Masaoood Bergum WLL	Jacobs
04	Additional Work @ Marina Villa	Abu Dhabi	HAMG	
05	Replacement Of Balcony Door @ Silver Tower	Abu Dhabi	ASTEKO	-
06	Glass Partition@Bawabat Al Sharq Baniyas - ABU DHABI	Abu Dhabi	Magnify Technical Service Llc	-
07	Window Maintenance &Glass Replacement Work @ Silver Tower	Abu Dhabi	ASTEKO	-
08	Aluminium Fins Work	Abu Dhabi	GRANKRAFT	ICON Intelligent consult
09	Aluminium Partition Work @ Salma Hospital, Abudhabi	Abu Dhabi	Plus Int. Medical Center	=
10	HPI Cladding Sheet Work @ Marina # 27	Abu Dhabi	HAMG	=
11	Majlis Work @ Al Booki Marina Villa # 25	Abu Dhabi	Details Interior design	-
12	Building Refurbishment ACP cladding & Aluminum decorative panel fixing	Madinat zayed	Ministry	-
13	Door maintanance & glass Work @cranleigh School , Abudhabi	Abu Dhabi	IMDAAD LLC	-
14	Aluminium & Glazing Work fo New Majlis	Al Ain	Private Client	-
15	Aluminum Pregola Work @ Camel Race	Abu Dhabi	Camel Race Federation	-
16	Car Parking Fabric @ Sweihan 1 & 2	Abu Dhabi	Ministry	-
17	Bullet Proof Glass @ Sas Al Nakheel	Abu Dhabi	Ministry	-
18	Steel Work @ Khaldiya Branch -abudhabi	Abu Dhabi	JONES THE GROCER	-
19	Building Refurbishment Ahalia Hospital Hamdan Street	Abu Dhabi	Al Ahli Hospital Company LLC	Mark Habre & Associates
20				-



➤ ATLAS STAR - 2021

NO.	PROJECT	LOCATION	MAIN CONTRACTOR	CONSULTANT/ CLIENT
01	ADNOC Petrol Station(OTG) (08 Nos) support structure & cladding works	Abu Dhabi	Beaver Gulf	-
02	Glass Work @ Camel Race Track	Abu Dhabi	Camel Race - Metalix	
03	Glass Partition Work @ Emirates Pride Mall	Abu Dhabi	Munawel Interiors LLC	
04	Fire Rated Steel Door @ Nadi Gate Head Office	Abu Dhabi	Ministry	-
05	Steel Reinforcements To Facade @ Marina Villa # 27	Abu Dhabi	HAMG	-
06	Anti Droplet Screen @ Abu Dhabi Port	Abu Dhabi	Baruch Mechanical Contracting Llc	-
07	Majlis Work @ Marina Villa # 10	Abu Dhabi	Details Interior Design Llc	-
08	Supply & Installation Of Helipad Wind Sock	Abu Dhabi	Ministry	-
09	Steel Wire Mesh Fencing@sweiha	Abu Dhabi	Ministry	-
10	Automatic Flag Pole Work @Sharjah, Ras Khimah,Um Al Quwain,Fujairah	Abu Dhabi	Ministry	-
11	Automatic Flag Pole Work @Sharjah, Ras Khimah,Um Al Quwain,Fujairah	Abu Dhabi	Ministry	-
12	Handrail Safety Guard @ Al Wahda Mall	Abu Dhabi	Line Investment & Property LLC	-
13	Bus Parking @ Sweihan	Abu Dhabi	Ministry	-
14	Fabrication, S/I of Steel Structure System & Sandwich Panel @ Marina Villa #30	Abu Dhabi	HAMG	
15	Aluminium & Glass Work @ Nursery Al Yaset Island	Abu Dhabi	Details Interior design	-

➤ ATLAS STAR - 2020

NO.	PROJECT	LOCATION	MAIN CONTRACTOR	CONSULTANT/ CLIENT
01	ADNOC Petrol Station(OTG) (12 Nos) support structure & cladding works	Abu Dhabi	Beaver Gulf	-
02	Coffee Counters @ Al Ain	Ai Ain	Ministry	-
03	SS Cladding Work @ Mushrif Mall	Abu Dhabi	Ayenz General Contracting LLC	-
04	Steel Fabrication Works @ Malaqit Camel Race Track	Abu Dhabi	Camel Federation	-
05	Flag Pole Work	Sharjah	Ministry	-
06	Car Parking & Fabric Installation @ Sweihan	Abu Dhabi	Ministry	-
07	Anti Droplet Screen Work	Abu Dhabi	Bruch Mechanical Contracting	-
08	Glass Work @ Al Sila, Yasat Island	Abu Dhabi	Don Rite	-
09	Shower Door @ Crown Prince Court	Abu Dhabi	AG Facilities Solutions	-
10	Airlock System @ NBTC ICAD	Abu Dhabi	Fuacher Aluminium	-
11	Core Cutting @ Jerlin Tower	Abu Dhabi	ADEEB Electricals	-
12	Sea Side + Majilis + Fence @ Marina #63	Abu Dhabi	HAMG	-

➤ ATLAS STAR - 2019

01	Canopy Works @ Kizad Abu Dhabi	Abu Dhabi	Royal Endavor General Contracting	-
02	Aluminium Partition @ Etisalat - Mafraq	Abu Dhabi	Allied Technical Works LLC	-
03	Accommodation @ Al Ain Ministry Of Interior	Abu Dhabi	Al Tawaslat Steel	-
04	Star Paper Mills - ICAD	Abu Dhabi	Fuacher Aluminium & Glass LLC	-
05	Glass Handrail Work @ Saadiyat Island	Abu Dhabi	Brook & Ripples LLC	-



NO.	PROJECT	LOCATION	MAIN CONTRACTOR	CONSULTANT/ CLIENT
06	Office Partition @ PCA Store, ICAD-3	Abu Dhabi	Lindenberg Emirates LLC	-
07	Triangle Sunshade @ Al Ain	Abu Dhabi	Ministry Of Interior	-
08	Glass PARTition Work @ MOI ICAD-2	Abu Dhabi	Advance Building Construction	-
09	Aluminium Window Works Arch Type @ Building T1 - Sweihan	Abu Dhabi	Ministry	-
10	Portable Steel Cabin @ Bada Zayed	Abu Dhabi	Ministry	-

➤ ATLAS STAR - 2018

01	Portable Steel Cabin	Abu Dhabi	Ministry	-
02	Replacement of Light Post @ Sweihan Ministry of Interior	Abu Dhabi	Park View General Contracting LLC	-
03	Majilis Work	Khalifa City	Mr. Juma'a Al Ka'abi	-
04	Louver Fencing @ Reem Island	Abu Dhabi	Brook & Ripples LLC	-
05	Emirates Light Factory @ Mussafah	Abu Dhabi	Brook & Ripples LLC	-
06	Fencing Work @ Royal Marina Villa #66	Abu Dhabi	HAMG	-



NO.	PROJECT	LOCATION	MAIN CONTRACTOR	CONSULTANT/ CLIENT
07	SKY Tower	Abu Dhabi	Details Interior Design	-
08	Etihad Tower	Abu Dhabi	HAMG	-
09	VIP Car Parking @ Head Office	Abu Dhabi	Ministry	-
10	Aluminium Work @ Bloom Gardens	Abu Dhabi	Emirates Link Maltro LLC	-

➤ ATLAS STAR - 2017

01	Marina Mosque	Abu Dhabi	HAMG	Studio International
02	Residential Villa for Dr. Muna Ahmed Hasan Al Ansari @ Plot No. 289C	Abu Dhabi	Kulak Construction Co.	Fourth Dimension Consulting Engg. LLC
03	Pvt. Villa For Mr.khaled Matter Al Dhaheeri	Al Ain	Stone General Contracting	Rigid Consultants
04	Al Ain Oasis Villas	Al Ain	-	Al Ain Properties
05	Automation Works @ Western Region	Dubai	Morganti	Musanada
06	Aluminium Partitions @ Marina Villa #47	Abu Dhabi	HAMG	Studio International
07	Handrail @ Takreer Security Office	Abu Dhabi	Scan Constructions	Takreer
08	Office Partitions @ Etihad Tower, 44 th Flr	Abu Dhabi	HAMG	Studio International
09	Marina Villa #66	Abu Dhabi	Arabtec Constructions LLC	MZ Architects
10	New Ruwais Office Building Projects, GASCO	Ruwais	ACTCO General Contracting Co. LLC	GASCO



ADNOC FILLING STATION
SCOPE OF WORK : ACP CLADDING WORK



NBTC OFFICE - I CAD
SCOPE OF WORK : ALUMINIUM CURTAIN WALL,
GLASS WORK & CANOPY WORK



AL DAR HEAD QUARTERS
SCOPE OF WORK : AUTOMATIC SLIDING GLASS DOOR
FOR MAIN ENTRANCE



NATIONAL SHOES FACTORY
MAIN CONT.: NATIONAL SHOES FACTORY



IPIC TOWER

LOCATION: ABU DHABI
AUTOMATIC DOORS SUPPLY & INSTALLATION



STAR PAPER MILL
MAIN CONT.: STAR PAPER MILL



ABU DHABI PORTS- SHOWROOMS & WARE HOUSES(KIZAD)

ACP CLADDING,CURTAIN WALL, DOORS & WINDOWS

MAIN CONT.: TROJAN



NATIONAL FACTORY FOR SAFETY & SECURITY PRODUCTIONS LLC

CLIENT : ABU DHABI MUNICIPALITY,
MAIN CONT.: BIN YAMEEL GEN. CONT. LLC



**NATIONAL FACTORY FOR SAFETY &
SECURITY PRODUCTIONS LLC**

CLIENT : ABU DHABI MUNICIPALITY,
MAIN CONT.: BIN YAMEEL GEN. CONT. LLC



NATIONAL FACTORY FOR SAFETY & SECURITY PRODUCTIONS LLC

CLIENT : ABU DHABI MUNICIPALITY,
MAIN CONT.: BIN YAMEEL GEN. CONT. LLC



GRACE HOME BUILDING MATERIALS
SHOWROOM

MAIN CONT.: HUNAN GEN. CONTRACTING



GULF CRYO

CONTRACTOR: BIN YAMEELA GENERAL CONTRACTING



YAS VAISROY HOTEL

MAIN ENTRANCE AUTOMATIC DOOR SUPPLY & INSTALLATION



AL SOWWAH SQUARE (GOVT. OFFICE)
MAIN CONT.: SEELE MIDDLE EAST



MUSSAFAH POLICE STATION
NAME OF THE CLIENT : PURCHASING DEPARTMENT



AL AIN REHABILITATION CENTRE

ALUMINUM PERGOLA, AUTOMATIC DOORS
& ACP. CLADDING JOBS



MARINA VILLA #66

NAME OF THE CLIENT : ARABTEC CONSTRUCTION LLC



AL DAR OFFICE BLG. - SAADIYATH ISLAND
ALUMINUM CURTAIN WALL, DOORS AND WINDOWS



**CURTAIN WALL & ACP WORKS FOR MAJLIS
MR. MUHAMMED MATTER (AL AIN)**



ROYAL VILLA #66, MAJLIS WORK

NAME OF THE CLIENT : ARABTEC CONSTRUCTION LLC

LOCATION : MARINA, ABU DHABI



FARM HOUSE FOR MR. ABDULLA AL HASHIMI

MAIN CONT.: EASTERN CORNERS GENERAL MAINT. CO.



MARINA VILLA -99
CLIENT-ARAB EMIRATES
SCOPE OF WORK : LIFT AREA GLASS WORK (WITH SPIDER)
AND CLADDING



4 PVT VILLAS FOR MR. AHMED AL SUWEIDI
MAIN CONT.: AL EHAB GEN. CONTG. LLC
CONSULTANT: LIWAN ARCHITECTURAL



ROYAL MARINA VILLA #22
MAIN CONT.: HAMG



VILLA #39, MARINA VILLAGE
MAIN CONTRACTOR: MR. MOHAMMED



LIFT LOBBY
SS WALL CLADDING WORKS



SS HAND RAILS
CUSTOM MADE



**STAINLESS STEEL WALL CLADDING
WITH ETCHED PATTERNS**



**SS PARKING SLOT BARRIERS
& BOLLARDS**



STAIR HANDRAILS WITH GLASS
CUSTOM MADE



CUSTOMISED SS BARRIERS & BOLLARDS



CUSTOMISED SS PRODUCTS



CUSTOMISED STAIR HANDRAILS DECORATIVE WORKS



CUSTOMISED STAIR HANDRAILS
DECORATIVE WORKS



SS WITH GLASS DECORATIVE WORKS



MILE STONE CAFE ABU DHABI

INTERIOR AND CUSTOMIZED METAL
FURNITURE WORKS



ALUMINIUM PERGOLA WORK FOR MAJLIS MR. MUHAMMED MATTER (AL AIN)



**PVT VILLAS FOR
MR. SAEED HUSSAIN AL JABARI**

CONSULTANT: AL AMAN ENGG. CONSULTANT
MAIN CONT.: AL EHAB GEN. CONT.



PVT VILLAS FOR DR. ALI AL SUWEIDI

CONSULTANT: MATRIX ENGG. CONSULTANT,
MAIN CONT.: GREEN CONCEPTS GEN. CONTRACTING



6 PVT VILLAS FOR COLONEL MOH'D
MAIN CONTRACTOR: AREENOUF GEN. CONTG. EST.



**3 PVT VILLAS FOR
MR. SALEM MOH'D. SALEM AL GHELANY**

CONSULTANT: AL SULTAN ENGG. CONSULTANT
MAIN CONT.: BUHAZWA GEN. CONTRACTING



CUSTOMISED 3D SIGNS & FLAG POLES



PROJECT SITE SIGNAGES



**FABRICATION AND INSTALLATION OF
CUSTOMISED PORTABLE CABINS**



**CUSTOMISED BACK PRINTED /PAINTED
GLASS PANELS**

OUR CLIENTS

 <p>مجموعة موانئ أبوظبي AD PORTS GROUP</p>	 <p>وزارة الداخلية MINISTRY OF INTERIOR</p>	 <p>أدنوك ADNOC</p>	 <p>شركة المسعود برغوم Al Masaood Bergum المسعود AL MASAOD</p>
 <p>ALDAR</p>	<p>بنك أبوظبي الأول</p>  <p>FAB First Abu Dhabi Bank</p>	 <p>إيليت أجرو ELITE AGRO LLC</p>	
 <p>Caringly Yours Ahalia Hospital</p>	 <p>SCAN CONSTRUCTIONS</p>	 <p>CPECC - AUH</p>	
 <p>AG FACILITIES & CONTRACTING</p>	 <p>HAMG</p>	 <p>KHIDMAH</p>	
 <p>alam properties</p>	 <p>تروجان القابضة TROJAN HOLDING</p>	 <p>شركة الإمارات المساهمة نيتكو ذ.م.م Emirates Link Nitco LLC</p>	





Tel: 02-551 9944 | Email: info@atlasstaruae.com,
Website: www.atlasstaruae.com



P.O. Box 108096, M-12, Mussafah, Abu Dhabi, UAE