

Index Index Index
Index Index Index
Index Index Index
Index Index Index
Index Index Index
Index Index Index
Index Index Index
Index Index Index
Index Index Index
Index Index Index
Index Index Index



Index
ENG.TURNING L.L.C.

Index Index Index



PRE-QUALIFICATION DOCUMENTS



INDEX

- ◆◆ **Company Profile**
- ◆◆ **Organisation Chart**
- ◆◆ **List of Resources / Equipments**
- ◆◆ **List of Projects With Photos**
- ◆◆ **QA & QC Manual**
- ◆◆ **Health & Safety**
- ◆◆ **License**



COMPANY PROFILE

Established in 2004, INDEX ENG. TURNING L.L.C is focused on industrial construction projects that primarily involves fabrication and erection of STRUCTURAL STEEL AND ARCHITECTURAL METAL WORKS. With over eighteen years of experience in metal steel fabrication, your project is safe in the hands of our experts. Based in Sharjah Industrial area, we have been fabricating projects of all sizes for clients across UAE. We provide local service for a range of commercial businesses, including many architects and designers. With our dedicated team of highly skilled tradesmen and engineers, we have earned a reputation for consistently delivering the very highest standards of metal fabrication for our clients. We are recognized experts in our field, utilizing our extensive experience and top end equipment to fabricate products of exceptional build quality at competitive price with a fast turnaround. Our service focuses on bespoke design. Our skill and expertise enable us to create almost anything using mild steel, stainless steel, other ferrous and nonferrous metals, completely customized to our clients' requirements, whilst maintaining impeccable standards of workmanship. Our key strength is the flexibility we offer with our clients' needs, whether it be a quick turnaround for a project or creating something unique. With Index Engineering you can be guaranteed a high level of quality and professionalism through the entire process from design to fabrication and installation. Contact us today to speak to one of our experts, who will be happy to discuss your project and requirements. We offer what we believe to be a truly bespoke experience and our goal is simple – ensuring we provide ‘made to measure’ solutions quickly, priced competitively, but at the same time never compromising on quality.



OUR MISSION

By providing new technical solutions, delivering high-quality products and complete customer service, we will be recognized as the partner of choice in the industries we serve.

OUR VISION

"Adding value to everything by creating innovative solutions."

EXPERIENCE

Our to date success primarily attributes to a team of experienced and skilled workforce spearheaded by a management that has been in the forefront of structural steel & metal industry for well over 18 years. We continuously show keen interest in learning newer methods, technologies and advancements in terms of material and its installation. We assure you our expertise, whilst considering us for a valuable project of yours. We are a customer-centric company backed by continuous passion for innovation, quality and safety of the products that we fabricate.

EXCELLENCE

We take pride in delivering over and above the expectations of the clients. Quality is never let down, even on tight schedules. Every alternative is matched to the global standards and client satisfaction is ensured at every stage of our execution. We benchmark ourselves against the best, learn and adapt from the best and do not limit ourselves. We plan strategically and go all out to ensure it is met with.



PRODUCTS

The team of INDEX ENG. TURNING L.L.C is experienced in all kind of ferrous and nonferrous metal.

Our area of expertise includes but are not limited to the following:

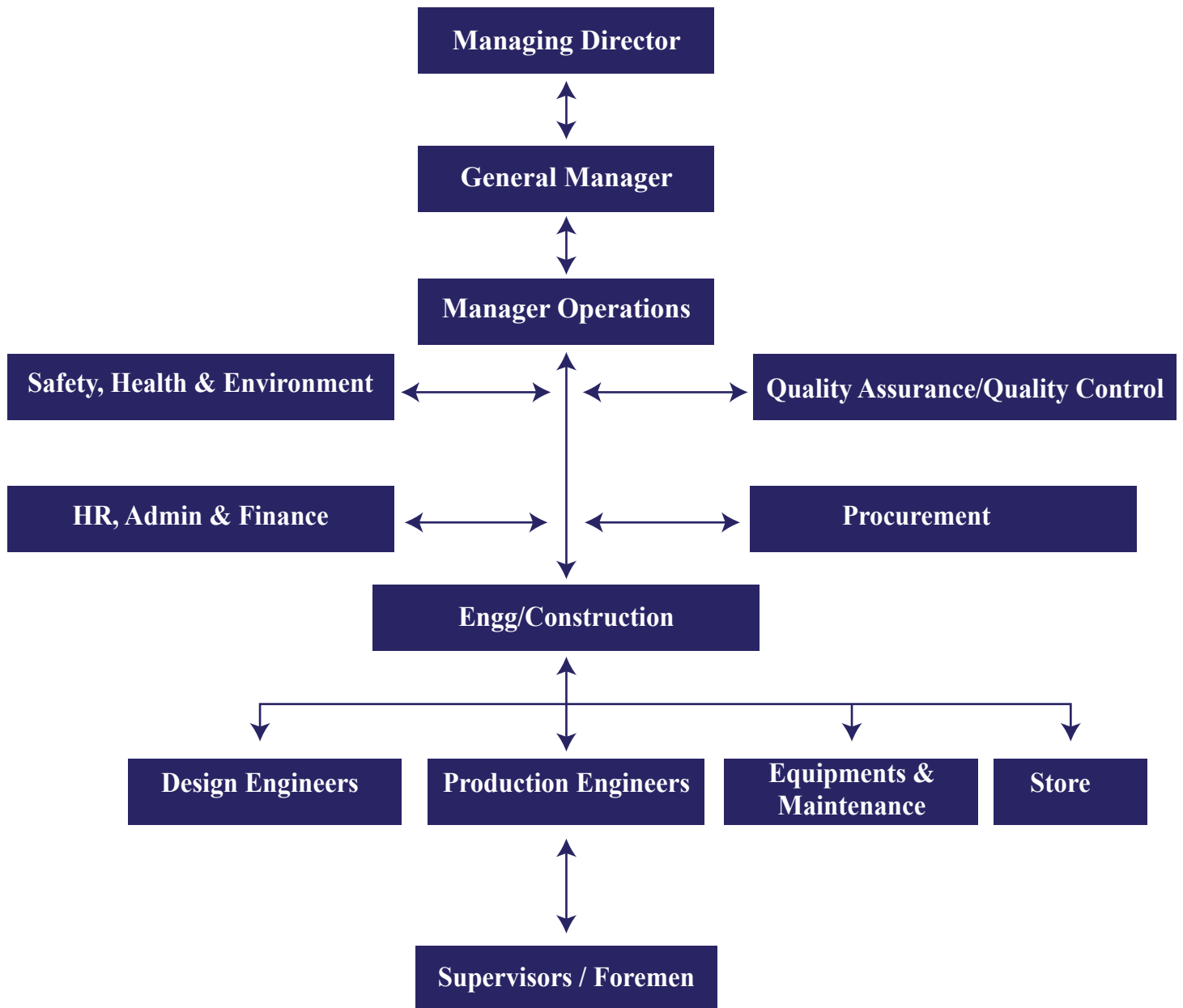
STRUCTURAL STEEL

- Warehouse structure
- Stairs
- Ladders & hand rails
- Mezzanine floor
- Decking
- Roof sheeting works
- Pipe racks
- Crane girders
- Jib cranes
- Mono rails
- Lifting frames
- Steel tankers etc.
- Miscellaneous fabrication works like
- Metal skips
- Generator housing,
- Fire extinguisher cabins
- Cylinder racks
- Chutes, ducts, crossovers, platforms, walkways etc.

ARCHITECTURAL METAL

- Stainless Steel / Aluminium Cladding
- Bollards
- Door Jambs / Architraves
- Balustrades/ Handrails
- Canopies

ORGANIZATION CHART



LIST OF EQUIPMENTS

EQUIPMENTS

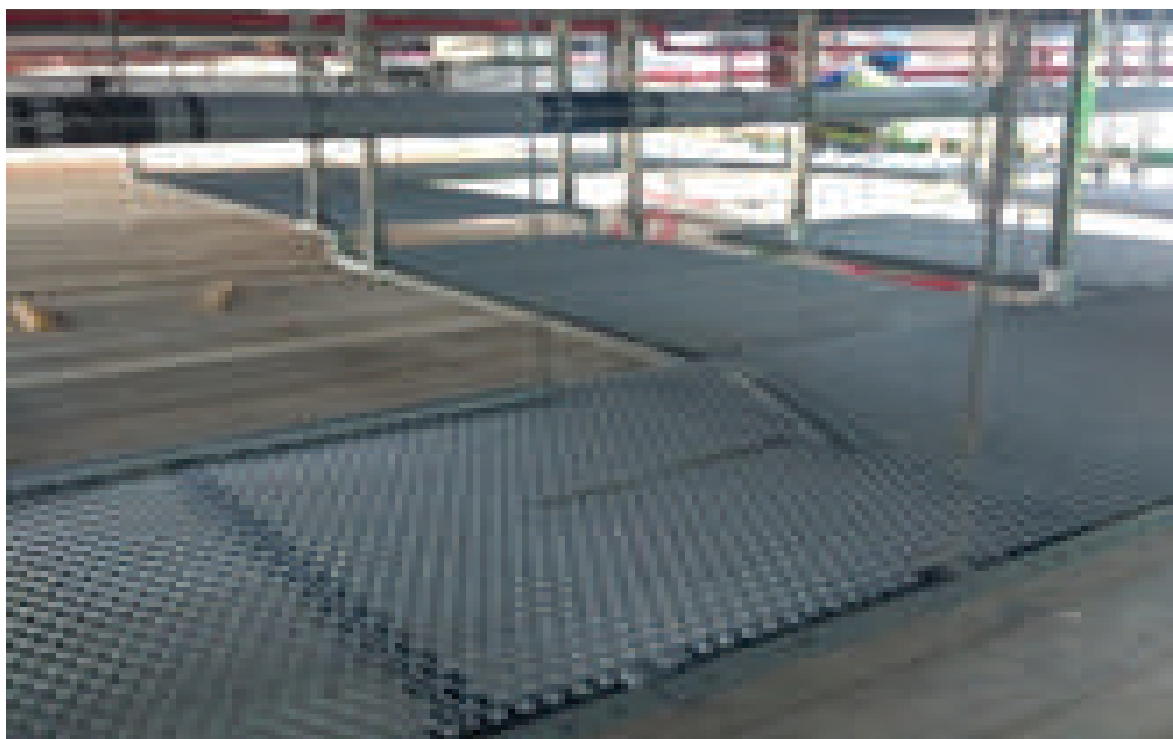
The factory is equipped with modern and advance technological facility for the manufacturing of steel / metal elements

Name	No.
Shearing machine	01
Bending Machine	01
Band saw machine	02
Disc Cutting Machine	03
Punching Machine	01
Magnetic Drill Machine	05
Pug Cutting Machine	03
Torch Cutting Machine	04
Welding Machine	11
Hand Drill Machine	08
Lathe Machine	01
Plate rolling Machine	01
Milling Machine	01
Shaper Machine	01

LIST OF PROJECTS WITH PHOTOS

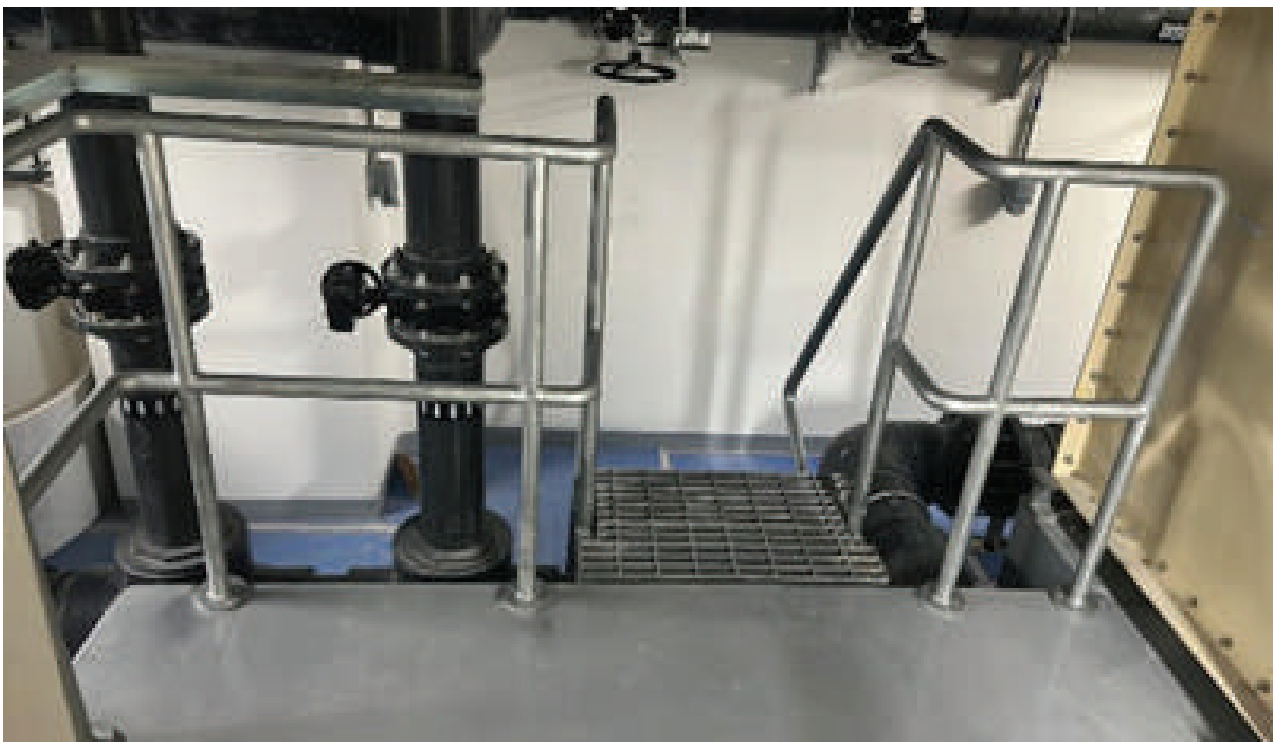
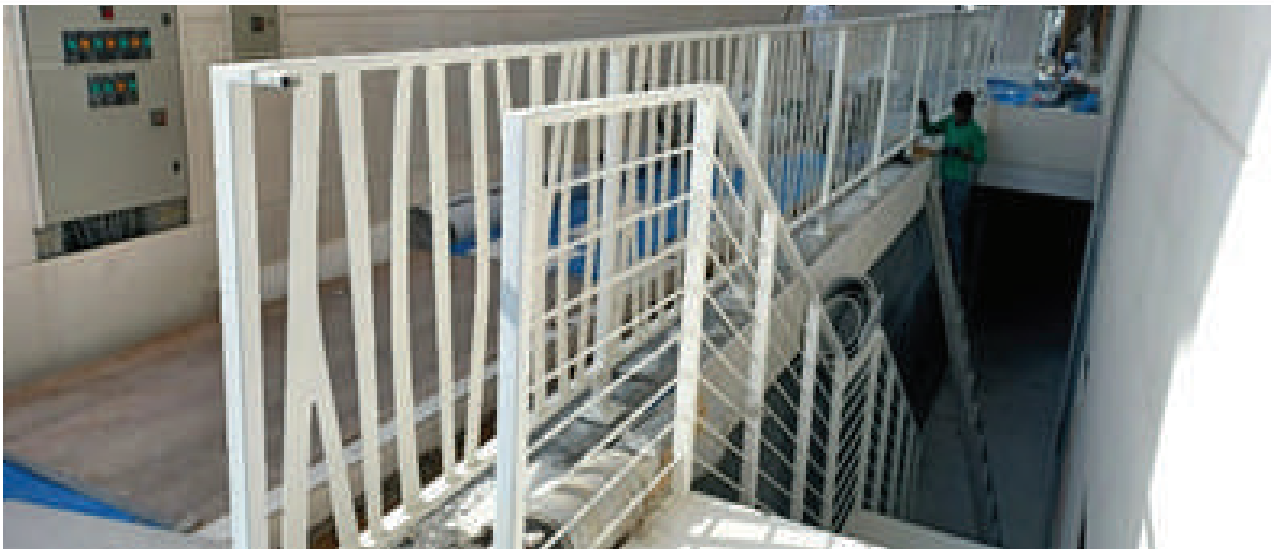
Client	Consultant	Contactor	Product	Location
Ithara	WSP	ALEC /Access 1	Cat walk platform in link Bridge	One Zabeel
Five Hotel	Q7	Sky9	Recording Studio	FIVE Hotel Jumeirah
Private	POE ARCHITECTS & ENGINEERS	TownX	Res. Villa in Jumeirah Island	Jumeirah Bay island
Ithara	WSP	ALEC /Access 1	Access ladder& platform	One Zabeel
Five Hotel	Q7	Sky9	Bed frames	FIVE Hotel Jumeirah
Ithara	WSP	ALEC /Access 1	Pipe protections in car park	One Zabeel
Al Khory Hotel		Varista	Bar counters	Al Khory Hotel
Private	M SQUIRE	K&D	Ladder& Handrails	Villa at palm Jumeirah
Ithara	WSP	ALEC /Access 1	MEP duct protections	One Zabeel
Ithara	WSP	ALEC /Access 1	Convex mirror Brackets	One Zabeel
Al Khory Hotel		Varista	Office tables	Al Khory Hotel
Five Hotel	Q7	Sky9	Swimming pool table	FIVE Hotel JBR
Private	POE ARCHITECTS & ENGINEERS	TownX	Res. Villa in Jumeirah Island	Jumeirah Bay island
Private		Future Sky	Exhibition Stand	Dubai
ARADA	JACOBS	Al Anqaa	Ladder& Bollards	Al JADA
Five Hotel	Q7	Sky9	SS barricades	FIVE Hotel JBR
School		Al Noor furniture	Bio-Dome	Abu Dhabi
Ithara	WSP	ALEC /Access 1	Bicycle Racks	One Zabeel
		Desert leisure	Car park	Internet city
ARADA	JACOBS	Al Anqaa	Platform& ladders	Al JADA
Private	M SQUIRE	Cherwell	Spiral Stair	Villa at palm Jumeirah
		Amro	Lighting pole	
Private		Nasco Trading	Beam	Villa Dubai hills
ARADA	JACOBS	Al Anqaa	Doors and windows	Al JADA
Private	LUXEDESIN	Clear water	Structure for Slab	Villa at palm Jumeirah
Five Hotel	Q7	Sky9	Dance bar platforms	FIVE Hotel JBR
Private		Future Sky	E-Charger for E-Car	Dubai
Ithara	WSP	ALEC /Access 1	ELV Platforms	One Zabeel



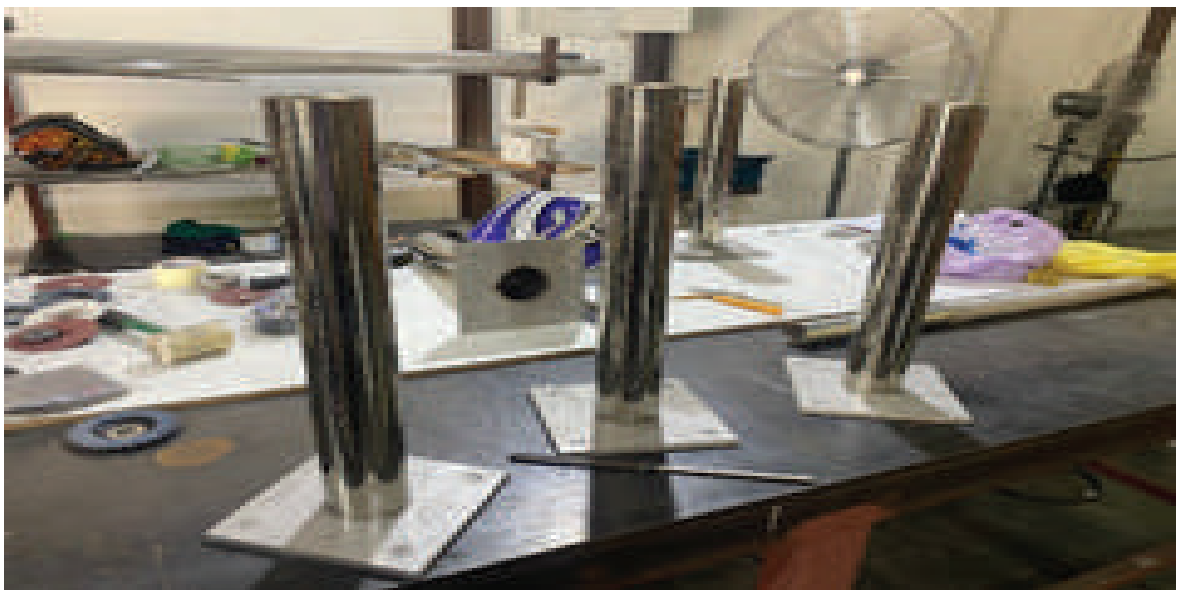


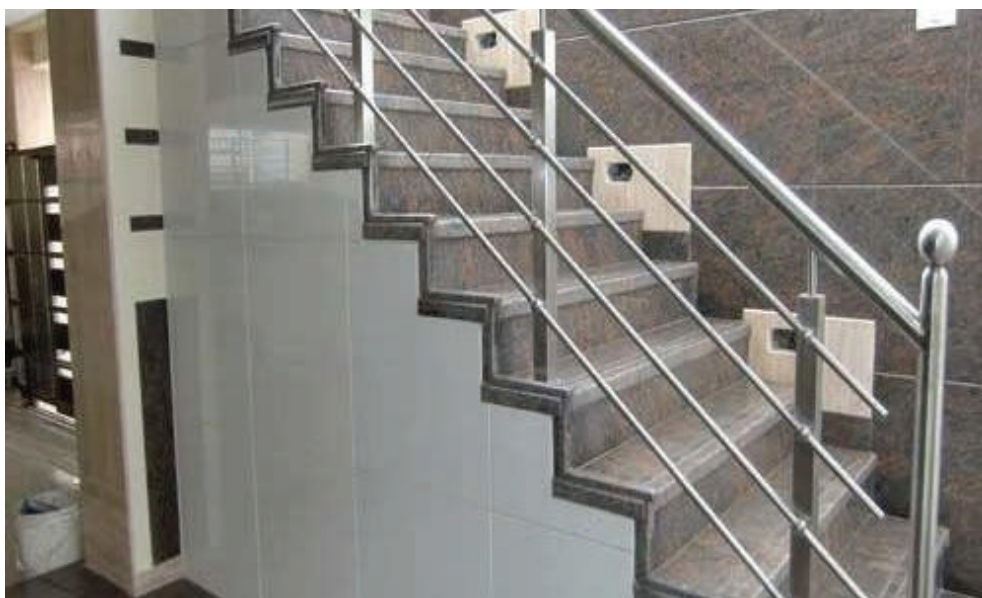














QUALITY ASSURANCE MANUAL

QUALITY POLICY

- * To fulfill all aspects of the company's contracted obligations to the satisfaction of our customers.
- * To continuously monitor, review and develop the company's engineering technological and quality needs relevant to its profile of products and services.
- * To continuously improve the effectiveness of the Quality Management System and processes in order to minimize non-conformances in all areas of our operations.
- * To develop and expand our core business and to diversify as relevant business opportunities arise.
- * To provide resources for improvement and effective implementation of the Quality Management System.
- * To achieve consistent profitability with sustainable growth of our business.

HSC POLICY

The management of INDEX ENG. TURNING LLC Co. firmly believes that prevention of injuries and ill-health to people, damage to property and harm to the environment are expectations and rights of our employees, clients and others who may be directly or indirectly affected by our activities.

We meet or exceed these expectations and rights by the application of an Environmental Protection, Health & Safety (EHS) Management System within the company based on a positive safety culture. In INDEX ENG. TURNING LLC, we are committed to minimize, as low as reasonably practicable, all the risks associated with our operations through strictly complying with all applicable laws and regulations and apply internationally recognized standards; where local laws and regulations do not exist. For that end, we will;

- * Provide a competent work force
- * Establish and maintain safe places of work and safe systems of work
- * Identify and assess all risks arising from our activities and mitigate or reduce them to an acceptable level.
- * Effectively consult and communicate on all EHS matters with all affected and interested parties.
- * Continuously monitor performances, audit and review to ensure compliance.

LICENSES

GOVERNMENT OF SHARJAH
Economic Development Department



حكومة الشارقة
دائرة التنمية الاقتصادية



الشارقة الرقمية
Digital Sharjah

رخصة صناعية
Industrial License



دليل الشارقة الصناعي
Sharjah Industrial Guide



525192

License Details الرخصة

Issue Date 2004/01/05 تاريخ الإصدار License No. 525192 رقم الرخصة

Expiry Date 2024/01/03 تاريخ الإنتهاء Registration No. 33717 رقم السجل

Trade Name INDEX ENG. TURNING L.L.C الاسم التجاري الفهرس للخراطة الهندسية ذ م م

Legal status Limited Liability Company الشكل القانوني شركة ذات مسؤولية محدودة

License Members أطراف الرخصة

الحصص	الصفة	رقم الهوية / الجواز	الجنسية	إسم المستثمر	رقم المستثمر
Shares	Type	ID/Passport No.	Nationality	Investor Name	Investor No.
%51	شريك	784197221872951	الإمارات	ماجد علي صفر محمد الانتصاري	2412
%49	شريك	784197319250755	الهند	شاجي جوفيندان ساهاديفان	4836544

المدير شاجي جوفيندان ساهاديفان

أنشطة الرخصة ورشة خراطة

العنوان الشارقة-صناعية رقم 13/الشارقة- خلف شارع الثالث الصناعي -شيرة رقم 8 ملك عبد القادر عبد الله مهدي

0544864681 رقم الهاتف المتحرك:

39512 صندوق البريد:

index.engg@gmail.com البريد الإلكتروني:

Notes الملاحظات

- دخول شريك



2023/01/26 تاريخ الطباعة

39795 رقم المستخدم

- This document is official. It doesn't need to be stamped or signed.
To view license details please visit SEDD web site: www.sedd.ae
- It is prohibited to distribute advertisements in public places and residential areas.
- A permit is required when conducting any promotion.


- هذه الوثيقة رسمية ولا تحتاج لختم أو توقيع.
للتأكد من صحة البيانات يرجى زيارة موقع الدائرة: www.sedd.ae
- يمنع توزيع الإعلانات في الأماكن العامة والأحياء السكنية.
- يلزم استخراج تصريح عند إجراء أي عروض ترويجية.

SUBMITTAL FORM

TRANSMISSION OF DRAWINGS, DOCUMENTS, SAMPLES, ETC.

PROJECT : AL JADA INFRASTRUCTURE WORKS - PACKAGE 6
IRRIGATION AND FIRE FIGHTING PUMPING STATION

Submittal No. DS-0230	Rev.001
Date:	07/06/2023
SUBMITTED FOR	CODE
REVIEW	1
INFORMATION	2

RE:		PACKAGE NO. 6		ACTION	
TO: Mr. Mohammad Al Daass, Sr. Resident Engineer - JACOBS		ACCEPTED with No Comments - Proceed		AA	
Cc.		ACCEPTED WITH COMMENTS - Proceed in Line with Comments		AN	
		REVISE AND RESUBMIT Do Not Proceed		RR	
		REJECTED		R	
		FOR INFORMATION ONLY		E	
ITEM	QTY.	DOCUMENT / DRAWING NO.	DESCRIPTION	TYPE	CODE
1		ANQ-JADA-PS-PK6-PQ-020	Prequalification - Index Eng. Turning LLC	OT	(4)
			Steel Work at Pumping Station		
COPIES:					
1 Set Hard Copy					
FOR CONTRACTOR:				 Resident Eng. Sr. P.E. Resident Eng. Inspector Surveyor SE S RADA FILE 705 Actioned 14.70	
Supervision Consultant / PM to enter Action Codes and Remarks, and return to Contractor					
REMARKS:					
<p>Disputed with Comments</p> <ul style="list-style-type: none"> * HSE plans should be submitted and approved prior to start the work * MORA to be submitted along with ITP * Consultant has the right to withdraw the approval at any time in case of any non compliance observed. * Final compliance subject to satisfactory performance at 6th and 12th month <p>Correction or comments made relative to submittals during this review DO NOT relieve the Contractor from compliance with the respective requirements set forth under the Contract, where the Contractor is fully responsible for the strict conformance, compliance & abidance with the Contract requirements/provisions.</p>					
COPIES					
FOR CONSULTANT:				DATE:	
1 Code to be entered by Supervision Consultant				* TYPE: MDS - Method Statement SD - Shop Drawings GT - Guarantee/Warranty TI - Test/Inspection	
				CA - Calculations SM - Sample MD - Manufacturer's Data CT - Certificates OT - Others	



Mob: +971 54 4864681, Tel: +971 54 4964008
P.O.Box: 5294, Industrial Area - 13, Shed No. 8,
Sharjah - United Arab Emirates
E-mail: info@index-engg.com
Web: www.index-engg.com