



FUTURE STEEL FABRICATION LLC (FS)

About Us

Future Steel Fabrication LLC (FS) is a manufacturing company specialized in metal fabrication and production, offering solutions for use in residential, commercial and industrial projects. We specialize in fabrication of Stainless steel, mild steel and brass products.

FS has set up world-class facilities for design, fabrication and installation of Architectural Metal Works. At FS we enjoy the challenge and satisfaction of turning client ideas into quality metal products. We provide you with a bespoke service fit completely to your requirements. We support our clients with our specialist knowledge throughout the entire manufacturing process. We can provide the best and up-to-date methods of metal fabrication. Our staff has more than 13 years' experience and are experts in all types of metal fabrication and we will make sure that you will be getting a specialist service, quality and cost-efficiency. Also our team is composed of highly skilled metal and steel fabricators who are well-adept and trained in different aspects of material fabrication. Their attention to details and wealth of experience in the industry makes them more than qualified to handle every fabrication task and project.

Conveniently located at Sharjah Industrial Area-12, near Bin Laden Signal – Sharjah and in close proximity Sheikh Mohammad Bin Zayed Road E311. Our Fabrication facility is equipped with latest fabrication machines to meet client's requirements. Future Steel has sprawled over 1800 Sqft and it has been designed to enhance Production facility with state-of-the-art machines.

Our Mission

We are committed to developing a specialized Metal fabrication facility adhering to international standards and procedures to meet customer satisfactions. We aim to achieve this through our diverse knowledge base backed by a well-qualified and experienced dedicated employees.



Our Vision

We endeavor to be recognized as one of the leading and constantly growing force in the Metal fabrication field, by providing innovative, safe, reliable, cost effective and world class services in the Middle East.

Products and Services

We offer complete Solution for Metal fabrication from inspiring designs to timely manufacturing and proper installation. We assure to meet your sheet metal fabrication needs. Indulged with up-to-date technology, years of experience and outstanding performance. Our well experienced and professional team combines expert fabrication with dedicated personal service and competitive pricing. The result is an impressive reference list of satisfied clients with interior and exterior metalwork of the highest quality.

1. Balustrades and Handrails.

Handrails and balustrades can be custom built in stainless steel, brass and Mild steel as per client requirements in variety of finishes. Components are connected and built to provide smooth clean lines fir comfortable handrail touch and high aesthetic value. Balustrades can also made with glass as per the clients and projects requirements.

2. Cladding Works

Metal cladding can be done with Metals sheets (Stainless steel, brass etc.) as well as with perforated sheets. Metal cladding is durable, long-lasting and less susceptible to discoloration than wood and PVC wall cladding. Metal cladding can be done in Lift Lobby areas, door jambs, reception counter, column cladding, skirting to wall and where ever required as per the client design to give gorgeous look.



3. Custom Metal Handles

Metal Handles can be custom made in all types' metal as per the requirement of customer with variety of finishes for all types' doors, cabinetry and furniture. We'll turn your vision into a reality utilizing a variety of materials and done in a collaborative way. Our custom handles are elegant in look and best in quality.

4. Custom Metal Furniture (interior and exterior)

Our Custom Metal Furniture can applicable for all hotel banquet halls, Chinese and western restaurants, and dining and recreational places. Metal furniture can upholstered as per customer choice of leather and fabric. We are also specialized in fabrication of Frames and Legs for the Tables and Furniture as per the client design.

5. Interior Metal Works

Interior Metal works likes Custom Mirror with Metal Frames, Vanity frame with Light box, Custom Metal Lights, Floor trims, U Profiles, L Angles are fabricating in our factory as per clients requirements. These can be done in any type of metal with variety of finishes.

6. Machining Works

Milling Works, all kind of turning works for stainless steel and mild steel including threading works to fit to the clients requirements

7. Light Metal structure Works

We offer a design and build service taking care of technical drawings, engineer's calculation, and design concepts of Light metal structure works. Light metal works includes Vanity Support, Staircase Structure Works, Duct Ceiling Structure works, Skylights, Pergolas, Canopy, Mezzanine floor structure etc.



8. Fencing and Mesh Partitions Works

Fencing (interior and exterior), Bollards and wire Mesh partitions can be done as per the client requirements

9. CNC and Laser Cutting

Future steel offers superior laser Cutting services that can operate on a wide range of material from mild steel and stainless steel, brass and copper. Also we provide CNC Milling & Turning of all materials including Stainless Steel, Mild Steel, Copper, Brass etc. at competitive prices

Projects

Below are the few projects where our staffs has proved their skills and experience that can be showcased.

- ROTANA AMMAN
- HILTON – RIYADH HORELS & RESIDENCE
- ARJAN ROTANA, ABHUDHABI
- SHAZA HOTEL, RIYADH
- TECOM HOTEL
- RAJ MAHAL THEATOR (DPR, JABEL ALI)
- BAY VIEW HOTEL
- WAFI HOTEL COMPLEX & MALL EXPANSION PHASE 8
- DAMAC STAR PROPERTIES (DAMAC TOWER BY PARAMOUNT)
- RADDISSON BLUE
- JWEL OF CREEK (JOC)
- AHAMMED ALI RIYADH VILLA
- PALM TOWER
- MYDAN PROJECT DUBAI
- DUBAI MALL
- SOFITAL PLAZA
- EMIRATES MALL
- RITZ CARLTON

ROYAL ATLANTIS-PALM JUMEIRAH



ONGOING
PROJECTS



FAKEEH UNIVERSITY HOSPITAL, DUBAI-UAE





▲ **SSANGYONG – BESIX JOINT VENTURE**

PROJECT :
ROYAL ATLANTIS –PALAM JUMEIRAH

▲ **DECOVISION**

PROJECT : ROYAL ATLANTIS –PALAM JUMEIRAH
& AL WAZAL PLAZA –EXPO 2020.

▲ **STC OMAN**

PROJECT : ROYAL ATLANTIS –PALAM JUMERIAH

▲ **DUTCO INTERIORS**

PROJECT : DUBAI SILICON OASIS –
FAKEEH UNIVERSITY HOSPITAL.

▲ **ALTAYERS STOCKS LLC**

PROJECT : ABUDHABI –
MODON THE COVE ABU DHABI.

▲ **SPACEWELL INTERIORS**

PROJECT : DUBAI –UAE.

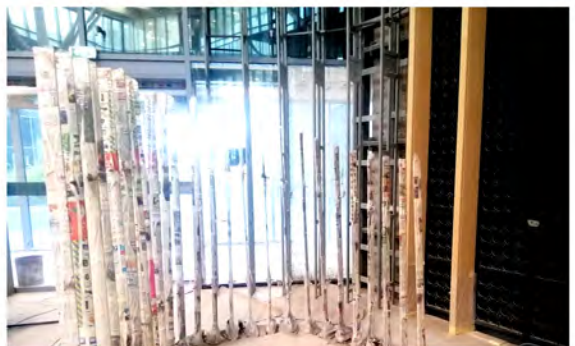
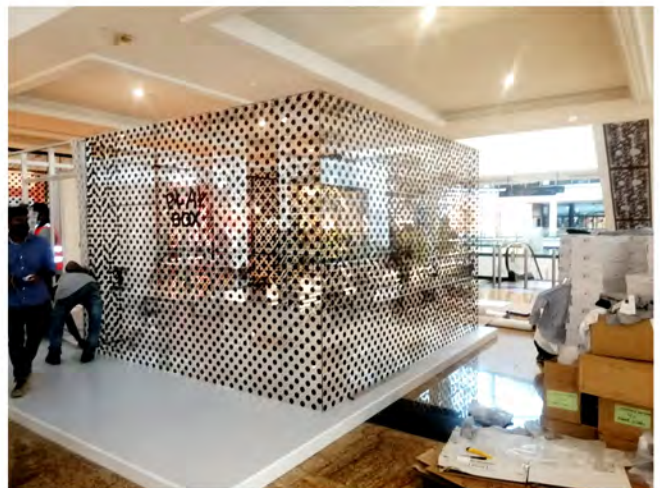
▲ **ASI INTERIORS**

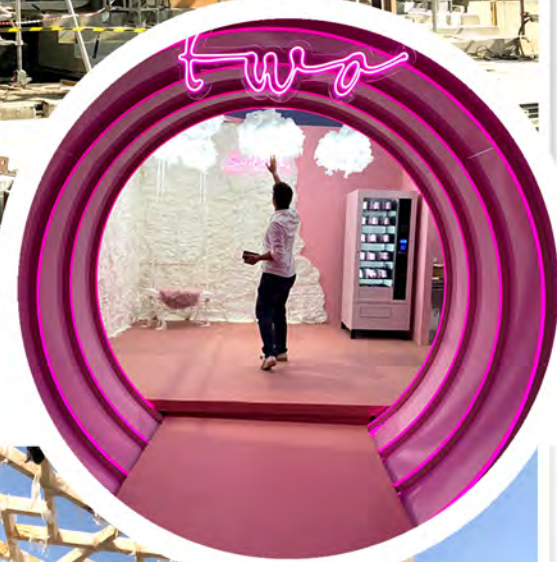
PROJECT : DUBAI –ROBERTS CONSTRUCTIONS

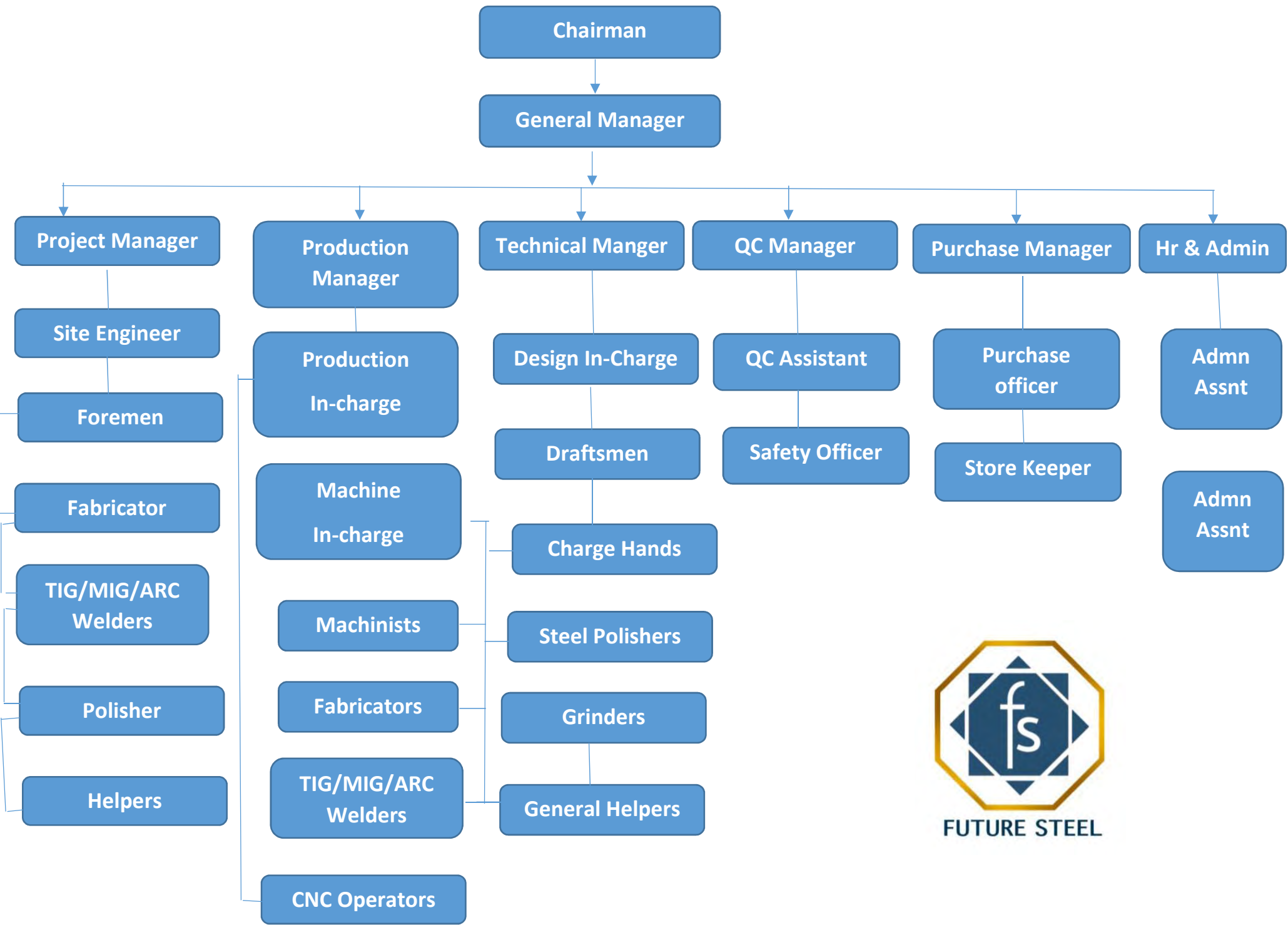
▲ **THE FIT OUT**

PROJECT : DUBAI - TRIG INTERIORS –DUBAI.











Quality Policy

- Commit our top management and employees to be involved in planning and effective implementation of our Quality Management System and shall work continually towards maintaining and improving the system.
- To maintain a high level of customer service and satisfaction through timely delivery and quality of our products
- Establish and review quality objectives in the areas of project management. Logistics and supplier management
- Enhance the skill and competence of our employees for effectively meeting the changing requirements of customers and business
- Communicate and periodically review this policy to all our employees

Health And Safety Policy

We are committed to providing and maintaining a safe and healthy work environment for our people, contractor, customers and visitors.

Our responsibility extends to ensuring Future Steel's operations do not place the local community at risk

To fulfill our commitment we will

- Ensure compliance with all legislative requirements.
- Provide and maintain a safe working environment and safe system of work
- Maintain and communicate written procedures and instruction to ensure safe system of work
- Provide measurable objective and targets, ensuring continuous improvement to our safety performance
- Provide measurable objectives and targets ensuring continuous improvement to our safety performance
- Provide approximate information training and supervision to our people, contractors and visitors
- Encourage and support our people to manage their mental and physical health through initiatives offered under our fitness for work program
- Ensure timely rehabilitation and return to work plans for work and non-work related injury and illness



Process Plan

At Future Steel a very structured process plan is being implemented. When job is confirmed a job order is opened in the system with the related documents like the cost sheet, the quotation and the confirmed Purchase Order. A copy of the job order goes to production and Purchase

Purchase sends out enquiries based on the material list prepared for this job and tries to get 3 Competitive prices estimation has to approve the best price based on the estimated cost of the product.

Compliance Statement

At Future Steel we ensure to comply and meet the required customer specifications at every level

At the job order stage the specifications are laid down from design to the production levels. This is carried through at every stage of production, be it machining assembly or finishing stages. Finally quality check ensures that the finished product is compliant with the order placed and consequently approved for delivery.



FUTURE STEEL FABRICATION LLC (FS)

Gallery





FUTURE STEEL FABRICATION LLC (FS)





FUTURE STEEL FABRICATION LLC (FS)





FUTURE STEEL FABRICATION LLC (FS)





FUTURE STEEL FABRICATION LLC (FS)





FUTURE STEEL FABRICATION LLC (FS)





FUTURE STEEL FABRICATION LLC (FS)





FUTURE STEEL FABRICATION LLC (FS)





FUTURE STEEL FABRICATION LLC (FS)





FUTURE STEEL FABRICATION LLC (FS)





FUTURE STEEL FABRICATION LLC (FS)





FUTURE STEEL FABRICATION LLC (FS)





FUTURE STEEL FABRICATION LLC (FS)





FUTURE STEEL FABRICATION LLC (FS)





FUTURE STEEL FABRICATION LLC (FS)





FUTURE STEEL FABRICATION LLC (FS)





FUTURE STEEL FABRICATION LLC (FS)



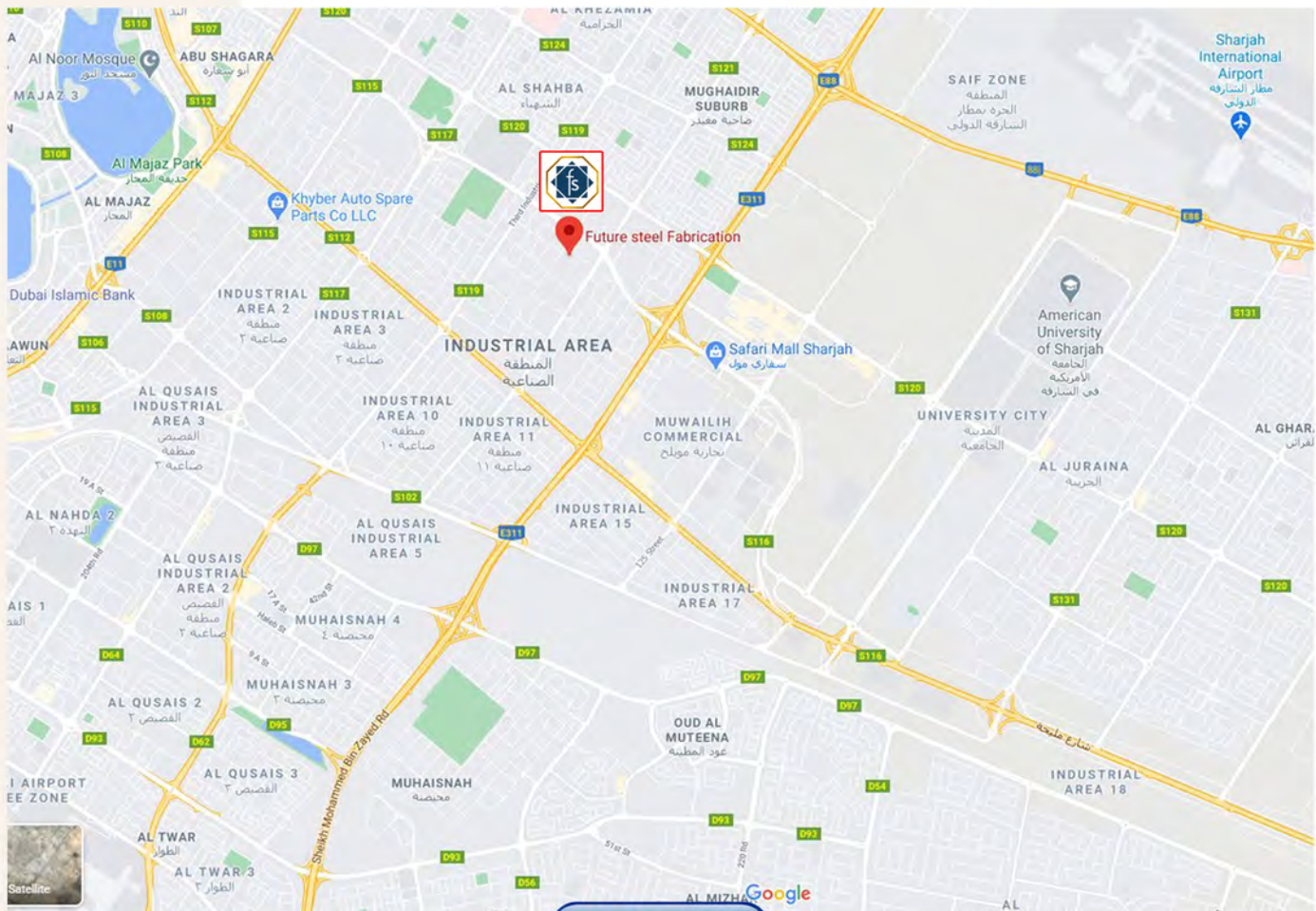


FUTURE STEEL FABRICATION LLC (FS)

Contacts

OUR CONTACT ADDRESS:

**FUTURE STEEL FABRICATION LLC
SHARJAH INDUSTRIAL AREA 12
SHED A8 & B8
NEAR BIN LADEN SIGNAL-SHARJAH
EMAIL: info@ftrsteel.com murali@ftrsteel.com
TEL: 06 5300652, 056 5766636**



[CLICK HERE](https://goo.gl/maps/pLb48GpWrycLTbYPA)

<https://goo.gl/maps/pLb48GpWrycLTbYPA>