



# 2021 COMPANY PROFILE

# AL SAHARE

DEMOLITION AND EARTH WORK

الصحاري لأعمال الهدم والتسويات

## GET IN TOUCH



+971 56 400 7681



[www.alsahare.ae](http://www.alsahare.ae)





## Our Mission

Our Mission is to provide Safe and Quality Services for our clients, exceeding customer expectations through our companies Vision, Goals, and Core values.

## Our Vision

Our Vision is to set an example in our Industry and constantly grow the value of our business throughout the country with the highest level of customer satisfaction.

## Our Goals

Our Goals are to create and promote services to our customers that are unmatched. We strive to provide the Best Quality workmanship and consistent higher level of customer service that:

- The desire of previous clients to re-do business with us
- To be recommend by our customers to family, friends and colleagues
- To be selected by business professionals for the satisfaction of our employees and the pride of our services



# WORK POLICY AND DEVELOPMENTS PLANS

ALSAHARE DEMOLITION COMPANY IS COMMITTED TO ACHIEVING A HIGH LEVEL OF PERFORMANCE FOR CLIENT SATISFACTION BY MEETING OR EXCEEDING EXPECTATIONS AND DEMANDS, IN ACCORDANCE WITH STATUTORY AND REGULATORY REQUIREMENTS, AND MOST IMPORTANTLY, QUALITY STANDARDS.

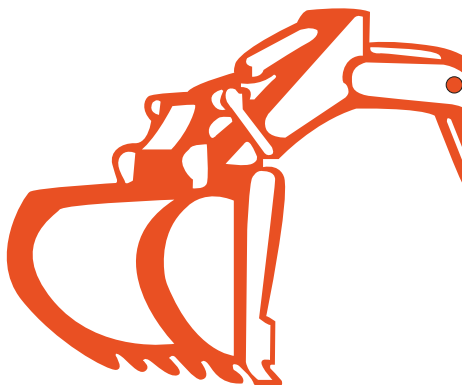
- Compliance with government laws.
- Compliance with statutory authorities' regulations.
- Cooperation with other contracting and consultancy firms.
- Organization development and improvement.
- Compliance with high quality standards.
- Improvement of personnel motivation, awareness, and morale so that they will actively participate in the
- implementation of company policies.
- Delivery and evaluation of each project effectively in order to increase performance level of services.
- Identify and control the work procedure for efficient and effective performance.
- To review the hierarchy of authority and responsibilities and to clarify the communication channel for a smooth flow of information.

# OUR CORE VALUES

## Safety

Safety is our number one concern. We are committed to doing everything possible to ensure a safe working environment for everyone working on, or visiting our jobsites. All work is carried out in compliance with OHS obligations and we will provide your company with all the necessary paperwork including:

- Safety Management Plans
- Asbestos Removal Control Plans
- First Aid Qualified Supervisors
- **Risk** Assessments • Service logs
- Insurance Documentation



## Build a Positive Team

We spend a lot of time away from our own families when at work, so much in fact that we're almost a 2nd family. That's why we believe in building a Positive, Fun, Energetic, working environment. Also, working together with a positive attitude, everyone achieves more.

## Passion and Determination

We believe in what we are doing, and where we are going.

Our positive and optimistic attitude inspires everyone around us to be and do their best in spite of obstacles that may come up

## Integrity

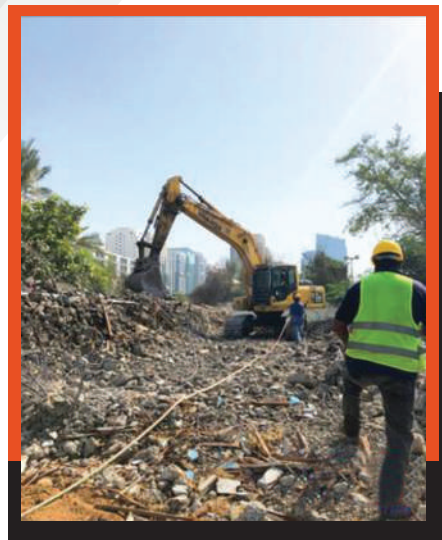
We hold our work and our people to the highest standards of professional behavior and ethics because we believe in doing the right thing, all the time. Our commitment to ethics and fairness guides every aspect of



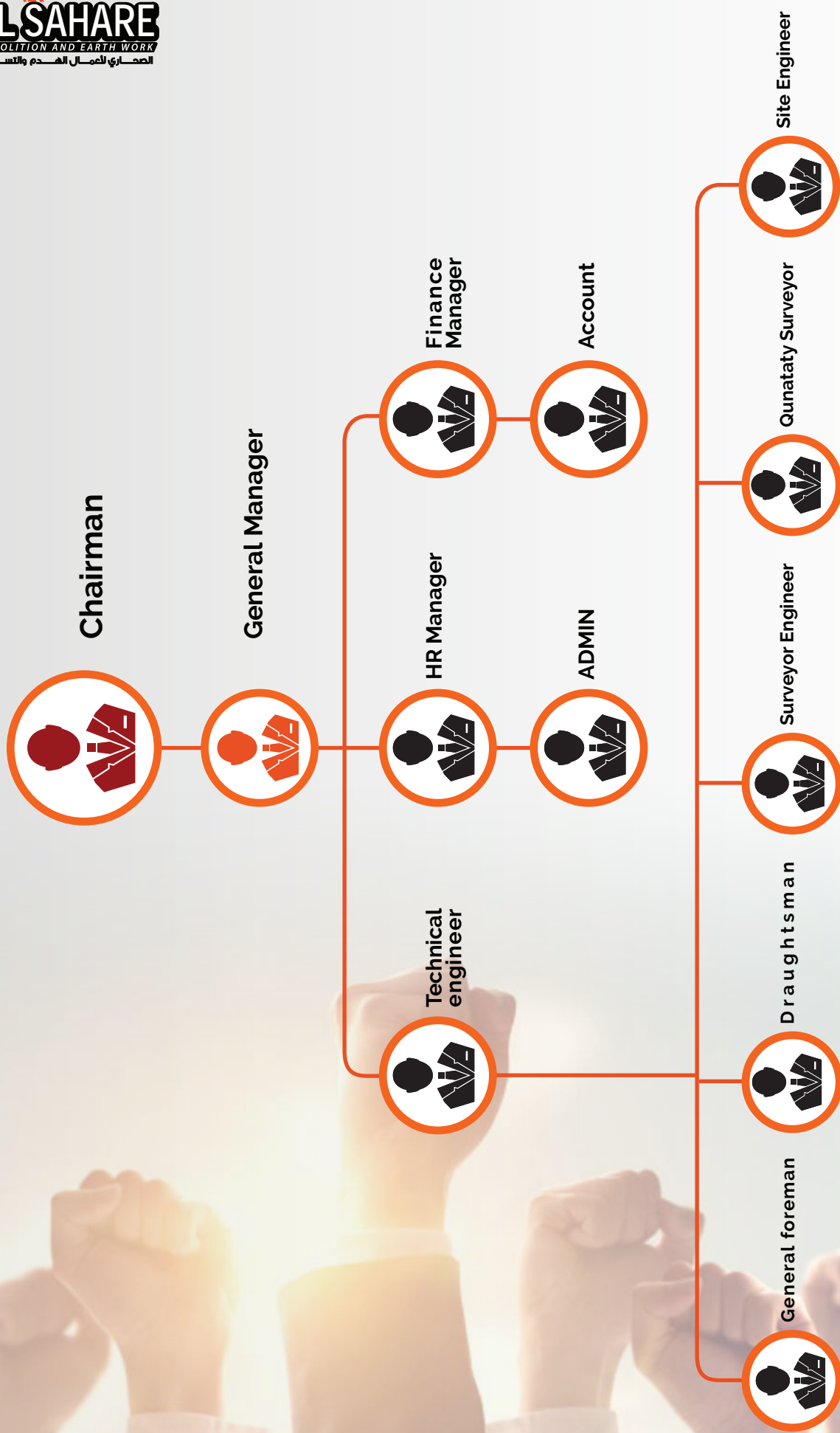
## Relationship

We are a relationship-driven company, and as such, we build trusted partnerships with our clients.

subcontractors and our employees with integrity, honesty, sincerity and mutual respect.



## TEAM & MANAGEMENT





# Services

**1-LEVELING AND BACKFILLING**

**2-DEMOLITION WORKS**

**3-CONCRETE CUTTING**

**4-STRIP OUT SERVICES**

**5-ERATH WORK, PILE CUTTING/EXCAVATION**

**6-DECOMMISSIONING**

**7-Survey works**



## DEMOLITION WORKS



We are offering demolition service for all building's structures such as houses, schools, residential buildings, hospital ... etc. We use the latest technologies to make the demolition safe, easy and fast. We depend on highly trained and expertise staffs and technicians to carry out the works complying with all safety requirements.

## Strip out services



We also offer strip out services. If you want to remove your interiors ceiling or floors, staircases and fixtures, we are here help. We are experts in dismantling and removal all parts of the structures and we manage our project as per the client's and authorities' requirements and recommendations to ensure the safety and quality.

## Decommissioning



Decommissioning of infrastructures. includes the power plants & stations. Water substations, sewer treatment plants, Pipelines petrol distribution stations and oil fields We are fully aware on how it might affect to the environment that is why we are the highest standards and codes of practices while conducting the decommissioning. We also carry out detail inspection and initial survey to assess the risks on the workplace and the nearby.



## Earth works, Pile cutting/Excavation

We provide earthworks services which include the process which are excavation, transportation, unloading and compaction. For these works we use latest earth – moving equipment like excavators, trenchers, bulldozers, crawler loaders etc. to carry out the planned operation, fast, easy and safe. We assure that all rules and regulations are complied with while carrying out the earthworks and/or excavation.

## Leveling and Backfilling

Leveling and Backfilling services includes putting, removing or replacing the soil. It might come when the excavation is done and it requires heavy equipment, efficient planning and awareness of the project requirements, therefore, ADB assure that all works are well-planned before the project commencement, and of course the safety of our workforce and all who might be affected by our works is top priority.

## Concrete Cutting

We also offer Concrete Cutting of any concrete structures. This includes sawing, drilling and partial removing concretes, using high quality machines. We use concrete saws and drills in order to execute the works as per the highest safety and quality standards.



# Previous experience



**DIGNITY PF EACH HONEST TEAM PLAYER IS PROTECTED  
IS THE CEILING BY FACING BRUTAL FACTS  
PLAN,WORK HARD TO ACHIEUE CHALLENGING GOALS  
COMMITTED EXCELLENT SERVICE**

- 1-Demolition of G+1 Villa Juma Al Majid
- 2-Demolition of G+4 Floor Building Khalifa Al Muhairi
- 3-Demolition of G+2 Floor Building Al Ghurair
- 4-Demolition of 13 Warehouses Mohammed Jaber Abdulla  
Mohamed Al Harbi
- 5-Demolition of G+2 Floor Building
- 6-Demolition of Old Chemical Plant DOW Chemicals
- 7-Demolition of 3 no' s of under constructed Warehouses  
Tamdeen
- 8-Demolition of 14 No's of Villas H.H Al Shaikh Ahmed Bin Rashid  
Al Maktoum
- 9-Demolition of 4 Villas Saeed Mohammed Al Ghandi  
Internal Demolition of Musalla Mall Al Rostamani Real Estate
- 10-Demolition of G+1 Floor Building Sheikh Hasher Bin Thani Bin  
Juma Al Maktoum

# Previous experience



## Ports and Marine Works

- Break water, Revetments and Quay Walls Construction.
- Groynes Work at the Beach.
- Retaining walls.
- Beach preparation and filling.
- Mooring Platform for Boats.

- 
- 1-DUBAI LAND COMMUNITY DEVELOPMENT
  - 2-EARTH WORKS FOR WATER FRONT
  - 3-CUT AND FILL WORKS FOR ACADEMIC CITY
  - 4-FILLING FOR LAKES FOR M/S EMAAR PROPERTIES
  - 5-Global village and Jaddaf (Filling and Backfilling works)





Al majaz3 - Sharja  
Sarh Al Emirates Building  
Office number 1905



Pm@alsahare.ae  
Info@alsahare.ae



P. o b o x : 1 3 4 8 4



+971 56 400 7681  
+971 50 905 7941



Www.alsahare.ae

