



**POWER Way**

*For complete MEP solution*



**POWER Way**

**ELECTRO MECHANICAL CONTRACTING**

# INDEX

- **VISION**
- **MISSION**
- **DEPARTMENTS**
- **QUALITY ASSURANCE & QUALITY CONTROL**
- **SAFETY & HEALTH POLICY**
- **STANDARDS**
- **PROJECT REFERENCE LIST**
- **LICENSES AND APPROVALS**



## About us

As a well-established MEP contracting company in Ras Al Khaimah, we offer complete MEP solutions starting from design to supply & installation, testing and commissioning for a wide spectrum applications which includes all kinds of Electrical, Low Current, Water Supply, Drainage, Air Conditioning (HVAC), Refrigeration, Lightening Protection System, Cold Room, Chemical Pipeline, Compressed Air Pipeline System and Drainage HVAC & Refrigeration Systems and Piping Systems for Chemicals for Industrial Projects, Commercial & Residential Building, Hospitals, High Rise Towers, Landscaping and Street Lighting Projects, as per the standards of U.A.E authorities.

## Vision

We strive to become one of the most reliable MEP contracting companies in the Middle East, continuously conforming to our ever-growing professional and ethical demeanor as well as quality assurance standard to earn the privilege of being your contractor of choice.

POWERWAY is committed to:

1. Deliver 100% client satisfaction by providing state of the art yet viable & cost effective solutions and implementing those solutions through superior quality workmanship
2. Ensure that amidst all undertaken projects there exists a great deal of passion and commitment to provide quality services and on time completion to deliver client satisfaction.
3. Provide an open and flexible approach towards the needs of our clients by considering their views & comments and thus providing a better solution
4. Maintain professional leadership in project management capability.

## Mission

Guided by our vision we shall deliver high quality, cost effective jobs on time and enhance our client's satisfaction through continuous improvement of our business practices in terms of safety, quality, services, delivery as well as environmental protection.



# Electrical Division

Design, supply, installation, testing and commissioning



**Skilled to Expedite a Wide Spectrum Electrical Systems Ranging From Design, Supply & Installation and Testing & Commissioning of all Kinds of: Lighting & Small Power, Power & Control Cabling, Power & Control Panels, Instrumentation, Transformers, RMU's, Earthing & Lightning Protection, UPS Systems, Inverters, Motors, DG Sets, Low Current, Data & Telephone and Access control systems. Preventive Maintenance and AMC of all the above mentioned details are also Included**



## LOW VOLTAGE SECTOR

**Turnkey works which includes the total design, supply & installation, commissioning of the following**

Wiring, Lighting & Small Power Works for Villas, Villa Communities, Multi-story Buildings, Office Interior, Warehouses, Factories, Special Lighting Works (Explosion Proof, High Intensity, W/P) for Heavy Industries Like Explosive Storage Facilities, Oil Additive Industries, Cement Industry, Glass Factories etc. Street light works for all facilities like Parks, Parking Area, Roads, Airport Hanger Area Where High Intensities are Required etc.

Cabling and Containment/Routing Works Which Encompass Power, Control, Co-Axial Cables, Fire Rated Cables, Silicon Cables and Other Low Current Cables, Cable Tray, Ladder & Trunking Works. Busbar & Related Tap Off Unit And Connection Systems Low voltage panels like DBs, SMDBs, MDBs, Synchronizing panel, MCC and all type of switch-gears. Preventive Maintenance and AMC Services are Also Included.

Earthing Works Which Includes Grid or Individual Earthing with Earthing Resistance Enhanced With



Special Enhancing Compound, Lighting Protection, Aircraft Warning Light, Helipad Lights  
Uninterrupted Power Supply Systems, Inverter Systems, Frequency Converter Systems and Stabilizer Systems for Industrial As Well As Domestic/Commercial Purposes.

### Medium Voltage Sector

**Complete Design, Supply, Erection, Testing & Commissioning, Preventive Maintenance and AMC Of The Following**

Medium Voltage Panels, RMU's, Transformers, TMC ETC

Medium Voltage Cabling and Termination Works, MV Cable Jointing Works

Medium Voltage Testing



### Low Current Sector

**Includes The Total Design, Installation and Testing of the Following Systems**

Data/Telephone System

CCTV and related Camera Systems

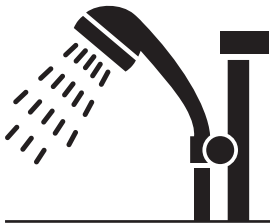
Gate Barrier, Sliding Door and Related Access Control Systems Home Automation and Industrial Automation Systems





# Plumbing and Drainage Division

Design, supply, installation, testing and commissioning

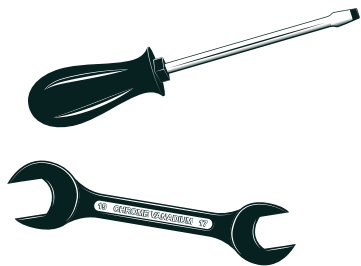


- Special Irrigation System for Controlled Environment Agriculture (Modern Farm).
- Industrial / commercial / residential drainage systems that include pipes, fittings, floor drains, cleanouts, rain water outlets, catchment basins and channel gratings, sewage and storm water lifting station, etc.
- Industrial / Domestic chilled / normal/hot water systems that include water transfer & booster pumps, water tanks, water heaters (central and domestic), water filtration and water treatment systems, etc.
- Portable water and drainage systems.
- Water closets, hand wash basins, bidets, bath tubs, shower trays, jacuzzi, mixers, shower and all kinds of bath room accessories .
- De-Salination Plant unit for Industrial and Commercial Purpose



# Mechanical/HVAC Division

The complete installation, testing and commissioning



- All types of chillers, package units, split ducted units and VRV's.
- Domestic ducted, jet fans and specialized ventilation system
- Industrial exhaust fans/ducted exhaust systems for industries and commercial projects
- Chilled water piping systems
- PI and GI ducts in accordance with SMACNA / DW 142 / ASHRAE standard.
- Compressed air and vacuum piping systems.
- Specialized systems namely: Smoke management systems, staircase pressurization system.
- Chiller, Freezer, Blast Freezer Cold Rooms.
- For commercial store and industrial purpose.

The services also include Heat Load Calculation, selection of equipment and Energy Conservation in terms of savings in energy and cost. The installation team has been trained to take care of specific noise / vibration control measures prior to erection of any equipment viz: Chillers, Pumps, Air Handling Units, Fan Coil Units, Extract Fans, etc. Air balancing / water balancing prior to final testing and commissioning activities will be done in accordance with CIBSE.







# Quality Assurance and Quality Control

Quality management plans are set forth and imposed on all undertaken projects. With our dedicated team of experts, we devise project specific quality measures ensuring customer satisfaction at all times and most importantly the project outcome. Not only do these plans ensure that the project requirements are met, but also that all stakeholders are satisfied with the project outcome.

## SAFETY & HEALTH POLICY

The management of POWERWAY holds high regard for the safety, welfare and health of its employees. We strongly ensure that every employee is working under the safest possible conditions. All possible efforts will be made to prevent accidents in all our worksites, workshops and projects. We believe that it is a good practice to guard against accidents and occupational diseases as preventing accidents will reduce the associated costs and increase the morale of the employees, which is an intangible benefit to the organization.

All employees in our company are expected to perform their duties without compromising

the safety guidelines issued from time to time. Safety requirements will be an integral part of all our systems and it will be carefully planned and controlled in the day to day operation. Safety is primarily a line function and the safety personnel will work as catalyst / functional experts in advising the line staff to manage safety efficiently. They will audit the company's operations on a continuous basis to ensure whether the existing safety systems are adequate enough.

We have a responsibility not to endanger the environment due to our operation and will do our best to preserve it to the possible extent.

## STANDARDS

Our Company adheres to the regulation and standards of following authorities:

- Federal Electricity and water Authority (FEWA)
- RAK Economics zone (RAK EZ)
- RAK Maritime City (RMC)
- Etisalat



# Major Clients

## SOME OF COMPLETED PROJECTS



### SAVER GLASS

ELECTRICAL FOR BATCH PLANT  
STORE, BOILER ROOM CHARGER  
SOCKETS SOLAR SYSTEM ETC



### PREMIUM TOBACCO FZ LLC

WARE HOUSE , FACTORY  
1000KVA POWER + MACHINE CONTROL  
LIGHTING INFRASTRUCTURE  
600 TONHVC PACKAGE UNITS

### ADVANCED CONCRETE PRODUCTS

COMPLETE MEP WORKS FOR  
2000KVA LOAD INCLUDING LIGHT



### ARC INTERNATIONAL MIDDLE EAST LLC

MACHINE, POWER PANELS  
CABLES AND CONTROLS





## EMIRATES NATIONAL SCHOOL TRINITY ENGINEERING

STAFF ACCOMODATION BUILDING  
ELECTRICAL  
LOW CURRENT WORKS



## ARCOMET FZC LLC

ARCOMET MAIN OFFICE  
BUILDING COMPLETE  
MEP WORK IN RAK  
MARITIME CITY  
(5MVA project+ 300 Ton HVAC)



## RAK DENTAL COLLEGE

DENTAL CHAIR, LIBRARY  
CONFERENCE ROOM ELECTRICAL  
WORKS



## RAK INTERNATIONAL AIRPORT

ARRIVAL TERMINAL  
CONVEYOR ROOM POWER  
NPA AREA STREET LIGHTS



## SOME OF COMPLETED PROJECTS



### AL NAEEM MALL

ELECTRICAL CABLE LAYING AND  
POWER CONNECTION FOR RHEM  
AL BAWADI, ELCHICO  
YELLOW CHILLI, SPAR



### THE FARMHOUSE

#### THE FARM HOUSE

COMPLETE MEP WORKS  
FOR THE TOTAL FARM  
CHILLER COLDROOM WORK



### VESUVIUS

CONFERENCE ROOM ELECTRICAL  
WORKS



**JK Cement Works (FUJAIRAH) FZC**  
(A SUBSIDIARY OF J.K CEMENT LTD)

### JKCEMENT WORKS

POWER NATURAL CABLE  
AND LIGHTING





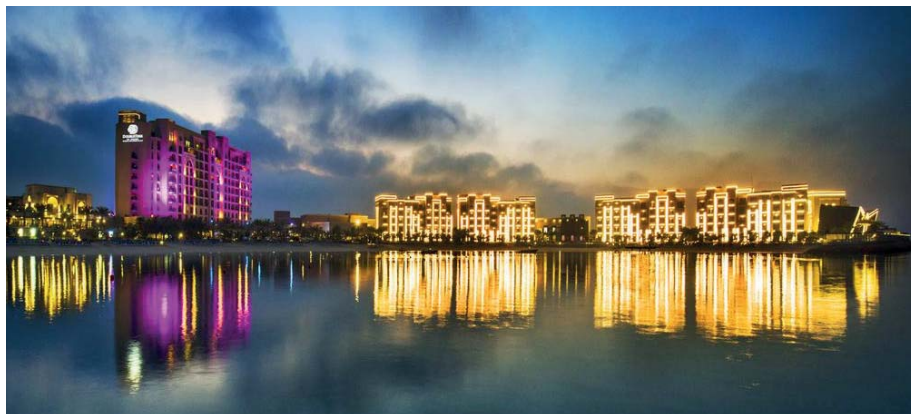
**PHARMAX  
PHAMRCUETICALS – DUBAI**

POWER AND CONTOL CABLE  
FOR ALL MACHINES



**RAK PROPERTIES**

MEP WORKS IN MINA AL ARAB  
BUILDING 4,16,12, CHANGING ROOM  
FACILITY BUILDING, TENNIS COURT ETC  
BERMUDA VILLAS



**DOUBLE TREE HILTON  
AL MARJAN ISLAND  
AL ALI CONSTRUCTION**

LIGHTINENING PROTECTION  
SYSTEM WITH LATEST DLP SYSTEM



**DABUR NATURELLE LLC**

STREET LIGHTING,  
CABLING FOR MACHINERIES



## SOME OF COMPLETED PROJECTS



KNAUF

AIR COMPRESSOR CABLE LAYING  
EMERGENCY SIREN SYSTEM



# RAK PORTS

RAK PORTS

ELECTRICAL WORK FOR  
FOOD PROCESSING FACILITY  
BUILDING AT SAQR PORT



BOSKALIS

PORTABLE CONTAINER  
MEP WORKS FOR VESSELS, PUMPS



# Mai Dubai™

water is life

Additional Machine Bottling and manufacturing  
Plant and related works





**Achakzai international industries LLC**  
Ware house , Factory , Store ,  
office and service area  
400 ton Air condition , 2000KW+ Electrical ,  
Compressed air , Dust Collector Systems



**EVERSENDAI**  
offshore

**Eversendai**  
Office Building  
Complete MEP - Electrical , Water Supply,  
Drainage , HDPE , HVAC System

## Geodynamics

Infrastructure , office,  
storage and bunker area  
Complete MEP - Electrical , Water Supply,  
Drainage , HDPE , HVAC System



**Piekkko Gulf**  
Ware house, Factory, Store, office and service area  
VRF AC for complete office area, accommodation 385 Ton Capacity

## SOME OF COMPLETED PROJECTS

### Golf Club/ towerlinks RAK

Restaurant , Bunker , golf course , office  
VRF AC for complete office area,  
Accommodation 385 Ton Capacity and Electrical



**Julphar**  
الخليج للصناعات الدوائية  
Gulf Pharmaceutical Industries

### Gulf Pharmaceutical Industries LLC

Julphar 1,6 and 10  
Electrical , HVAC , Water Supply and Drainage etc

  
**RAK HOSPITAL**  
Premium Healthcare. Premium Hospitality

**RAK Hospital**  
Eye Care Centre  
Complete Electrical , Low Current Works



### Technical Metal Industries

Factory 2- nos , Store , Ware house,  
Office and service Block  
Complete MEP - Electrical +2000KW , Water Supply,  
Drainage , HVAC System



**Sister Company**



**POWER WAY**  
*Smart Switchgear Solutions*



**POWER WAY**

**ELECTRICAL PANELS ASSEMBLING**

**THE COMPLETE SOLUTION IN  
POWER DISTRIBUTION AND CONTROLS**

## About Us

Power Way Electrical Panels Assembling is a division of the reputed “POWER WAY Electro Mechanical Contracting” based in Ras Al Khaimah. We spread our wings to the new horizons of the United Arab Emirates power distribution sector. As market leaders in electrical distribution supporters in the domestic, commercial and industrial sectors, we pride ourselves on the relationships we have established with our long-term and repeat business customers. These relationships have been built over many years of quality and reliable service. By taking the time to understand our customer's individual requirements we ensure we provide them with the best solution based on our technical knowledge and experience. Our superior project performance, professionalism and stability is evidenced by our bond rating, which is one of the best in the industry. We are put our mile stones through the years of business along with our satisfied customers.

We are specialized in LV power distribution systems such as MDBs, Capacitor Banks, ATS Panels. In control panels we are providing tailor made designs of Motor Control Centers, VFD & Soft Starters, Pump Control Panels, and control console tables. From design to delivery we committed to satisfy our customers with quality and reliability. Our products are designed to the highest level of technical standards and aimed to safety of our customers and consumers the only and one concern to us. By using the well known brand's products we assure our consistency in product quality and durability.

## We work with





# Our Product

## MDB

Form II, III and Form IV

Rating: 630Amp to 3200Amp

Front or Rear access type construction

Ample cabling space for easy connections

Top and bottom cable entry

Protection rating: IP 54 Ambient temperature rating : °50C



## TECHNICAL DATA

INCOMER: ACB - 3 or 4Pole, 630A to 3200A, 50 to 65kA, Fixed or draw out manual or motor operated.

MCCB - 3 or 4Pole, 630 to 1600A, 50kA, fixed or plug-in type, manual or motor operated.

BUS COUPLER: ACB or MCCB as above, Fixed or draw out, manual or motor operated.

MCCB - 3 or 4Pole, 630 to 1600A, 50kA, fixed or plug-in type, manual or

OUTGOINGS: ACB or MCCB as above, 3 or 4Pole, up to 1600A, 36 to 65kA.

BUS BAR: H.C.H.D. copper, tinned, insulated and color coded

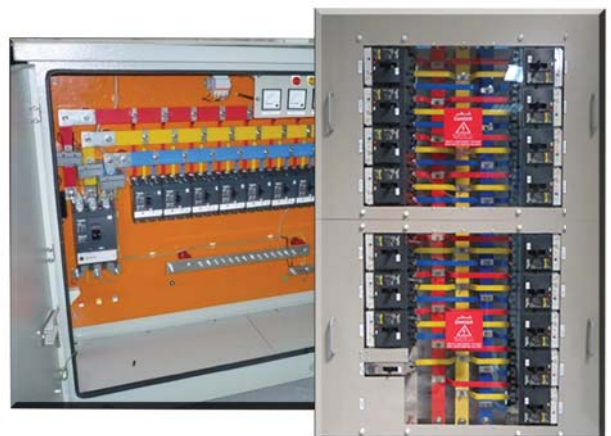
ENCLOSURE: Electro galvanized sheet steel 2mm, powder coated, removable rear covers, extendible on side, RAL 7032/7035

## SMDB

Rating: Up to 800Amp Ample cabling space for easy connections Top, bottom and side cable entry

Protection rating: IP 65

Ambient temperature rating: °50C



## TECHNICAL DATA

INCOMER: MCCB 100A to 800A, 3 Pole, 15 to 50kA, with / without external rotary handle. OUTGOINGS: MCCB 30A to 630A, 15 to 50kA, 3 Pole

BUS BAR: H.C.H.D. copper, tinned, insulated and color coded

ENCLOSURE: Electro galvanized sheet steel, powder coated, suitable for floor or and wall mounting.

# Our Product

## Capacitor Bank



With automatic PF regulator  
With or without harmonic -filters  
Standard sizes according to capacitor ratings  
Stand alone units for safety purpose  
Capacitor fitted with protection caps Temperature controlled  
Standard fixing for increased air circulation Ambient temperature rating



### TECHNICAL DATA

INCOMER: Isolator or 40 to 1250 Amp with external door handle  
OUT GOING: HRC Fuses as per standard, 100 kA  
BUS BARS: H.C.H.D. copper, tinned, rated for 50 kA short circuit  
CONTACTORS: Special contactors rated according to the sizes of capacitors with damping resistance for the inrush current  
CAPACITORS: Equipped with advance technology capacitors for over voltage of 450V mounted in upright position  
REGULATOR: Programmable microprocessor based PFR to allow compensation of low low line voltage.

## DB



Final DBs Flush or Surface mounted type  
Assembled according to the specification and requirements  
Top, bottom and side cable entry  
Ambient temperature rating 50°C

### TECHNICAL DATA

INCOMER: Isolator 40 to 160A, 3Pole or 4Pole  
OUTGOINGS: ELCBs 25A to 125A, 30mA to 300mA, 2P/4Pole MCBs 6 to 63A, 1P/2P/3P, 6 to 10 kA  
BUS BAR: 63/100Amp rated 1P/2P/3P/4P comb bus bar.  
ENCLOSURE: Electro galvanized sheet steel, powder coated





# Our Product

## Motor Control Centre

INCOMER: MCCBs Fixed or Draw out type  
OUTGOINGS: ELCBs, MCBs, Contactors, O/Ls,  
Motor Protection relays  
CONTROLS: Programmable Logic Controls  
or Intelligent MP Relays  
Manual and Auto operations based with  
relay or PLC controllers  
Power regulated with VFD / Soft Starters

### TECHNICAL DATA

INCOMER: Isolator or MCCB  
OUT GOING: ELCBs, MCBs  
BUS BARS: Load rated comb bus bar or rated insulated wires.  
CONTACTORS: Special contactors rated according to the sizes of capacitors with damping resistance for the inrush current  
CAPACITORS: Equipped with advance technology capacitors for over voltage of 450V mounted in upright position  
REGULATOR: Programmable microprocessor based PFR to allow compensation of low



## Control Panel

### TECHNICAL DATA

Application Standard : IEC 60439-1  
Insulation Voltage : up to 690V AC  
Rated Operational Voltage : 415V AC, 3 Ph  
Frequency : 50 Hz.  
Bus bar Current : up to 250A  
Bus bar Short Circuit : 36KA  
Application : FCU, LIGHTING, & EF  
Ambient temperature : 50°C  
IP Protection : IP 41/54  
Paint Color : RAL 7032 / 7035  
Form of Construction : Form – I



# Our Product

## Our Product

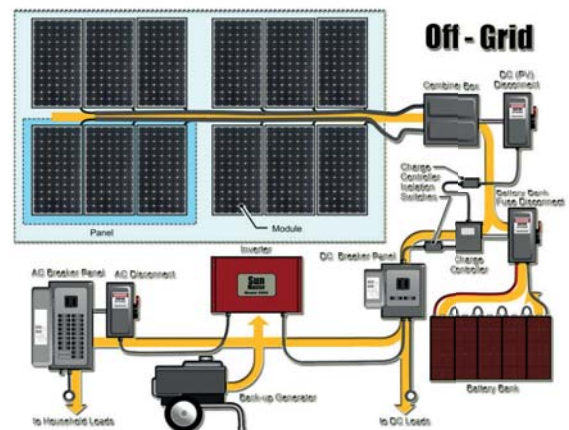
### Solar Energy System

Off-grid solutions - Roof top or Ground - based standalone solutions designed to ensure energy independence of residential and commercial sector to reduce dependence on Public Electricity Grid. \*Solar Street & Highway Lighting \*Solar Traffic Lights \*Solar Water Desalination \*Solar Water Pumping \*Solar Water Treatment \*Solar Water Heating



#### TECHNICAL DATA

Based on customer's demand we provide project initial concept design through studying and observing on site.



### Meter Cabinet n' Feeder Pillars

#### TECHNICAL DATA

Specification according to local authority specification and regulations

Approved by Federal Electricity and Water Authority Dept.GRP / Weather Proof GI metal enclosure as per specified size.





تصريح بيئي  
ENVIRONMENTAL COMPLIANCE CERTIFICATE

مجلس رأس الخيمة  
Government of Ras Al Khaimah

أعطي لـ  
POWER WAY ELECTROMECHANICAL CONTRACTING

أصاحبه  
Owner Name  
عنوانه  
Address

مجلس رأس الخيمة  
R.A.K. CHAMBER

دولة الإمارات العربية المتحدة  
سلطنة رأس الخيمة  
سلطنة رأس الخيمة

United Arab Emirates  
Ministry of Interior  
Ministry of Interior  
Ministry of Interior

شهادة استكمال شروط السلامة الوقائية  
Certificate of Completion of Precautionary Safety Conditions

رقم الترخيص  
License No. 42306

تاريخ الترخيص  
Date of Issuance 18-06-2017

مجلس رأس الخيمة  
R.A.K. CHAMBER

شهادة تسجيل العضوية  
Membership Certificate

مجلس رأس الخيمة  
R.A.K. CHAMBER

رقم العضوية  
Membership No. 48501

رقم التسجيل  
Registration No. 48190

نوع الترخيص  
License Type Local Company

نوع النشاط  
Trade Name POWER WAY ELECTROMECHANICAL CONTRACTING

الوضع القانوني  
Legal Status Local Services Agent

النشاط  
Activity Electrical Construction/Mechanical Construction

تاريخ انضمامه  
Member Since 22/05/2015

تاريخ الإصدار  
Issue Date

تاريخ الانتهاء  
Expiry Date

Professional License - رخصة مهنية

مجلس رأس الخيمة  
Government of Ras Al Khaimah

رقم الترخيص  
License No. 42306

تاريخ الترخيص  
Date of Issuance 18-06-2017

مجلس رأس الخيمة  
R.A.K. CHAMBER

الهيئة الاتحادية للكهرباء والماء  
Federal Electricity & Water Authority

رخصة مقاول تسييلات كهربائية  
Electrical Wiring Contractor Licence

رقم الترخيص  
Licence No. 516

اسم الشركة  
Company Name Power Way Electromechanical Contracting

العنوان  
Address RAK

رقم الترخيص  
Licence Grade 056 - 8389996

الحمل المصرح  
Licence Load

شهادة تسجيل العضوية  
Membership Certificate

مجلس رأس الخيمة  
R.A.K. CHAMBER

رقم العضوية  
Membership No. 52201

رقم التسجيل  
Registration No. 52702

نوع الترخيص  
License Type Local Company

نوع النشاط  
Trade Name POWER WAY ELECTRICAL PANELS ASSEMBLING

الوضع القانوني  
Legal Status Local Services Agent

النشاط  
Activity Electrical Panels Assembling

تاريخ انضمامه  
Member Since 15/03/2018

تاريخ الإصدار  
Issue Date

تاريخ الانتهاء  
Expiry Date

تصريح بيئي  
Environmental Permit

مجلس رأس الخيمة  
Government of Ras Al Khaimah

رقم الترخيص  
Ref No. 52201

تاريخ الترخيص  
Date of Issuance 15/03/2018

مجلس رأس الخيمة  
R.A.K. CHAMBER

دولة الإمارات العربية المتحدة  
سلطنة رأس الخيمة  
سلطنة رأس الخيمة

United Arab Emirates  
Government of Ras Al Khaimah  
Department of Economic Development

رخصة صناعية  
Industrial License

رقم الترخيص  
License No. 48501

تاريخ الترخيص  
Date of Issuance 18-06-2017

مجلس رأس الخيمة  
R.A.K. CHAMBER



**POWERWAY ELECTRO MECHANICAL CONTRACTING**

Ras Al Khaimah, United Arab Emirates  
Mob: +971 56 838 9996  
Tel: +971 7 235 6848  
Fax: +971 7 235 6818  
E-mail: sales@powerway.ae



**POWERWAY ELECTRICAL PANELS ASSEMBLING**

Ras Al Khaimah, United Arab Emirates  
Mob: +971 50 449 2283, +971 50 449 2289  
Tel: +971 7 2213975  
Fax: +971 7 235 6818  
E-mail: switchgear@powerway.ae