



MACHINERY (FZE)
www.futurepowerinternational.com



**INDUSTRIAL
GENERATOR**
from
**10kVA Till
2500kVA**



FPI GENERATOR

“We Provide
Reliable
ENERGY to All”





We deliver Power, Service and Solutions in Exactly the way you want It.

For more information and registration visit:
futurepowerinternational.com



FPI MACHINERY (FZE) is an ISO 9001:2008 certified company
An international standard for Quality Management Systems

POWERED BY:





About

FPI MACHINERY

The Division of **Mehdi Group** also known as (*FPI Generators*), prides itself on being one of the leading companies in the Supply and Maintenance of Diesel power generators in Middle East and Africa. We consider ourselves as one of the best electric generators set provider by delivering the best product and service in the region

We owe our success to our hardworking, highly skilled and committed employees. Our core focus lies in providing customized integrated products and services with well-established infrastructure, equipment and manpower to support and provide the turn key solutions for various industries. We provide the latest in power generator technology equipment, allowing us to give our customers the best product and the best possible service. Our objective is to serve customers to the utmost by providing them with the best-in-class electric generators, reliable door to door delivery, and after sales service at competitive market prices. We continue to build our solid reputation for excellence and response, while delivering reliable and tailored solutions to meet the customer's requirements.

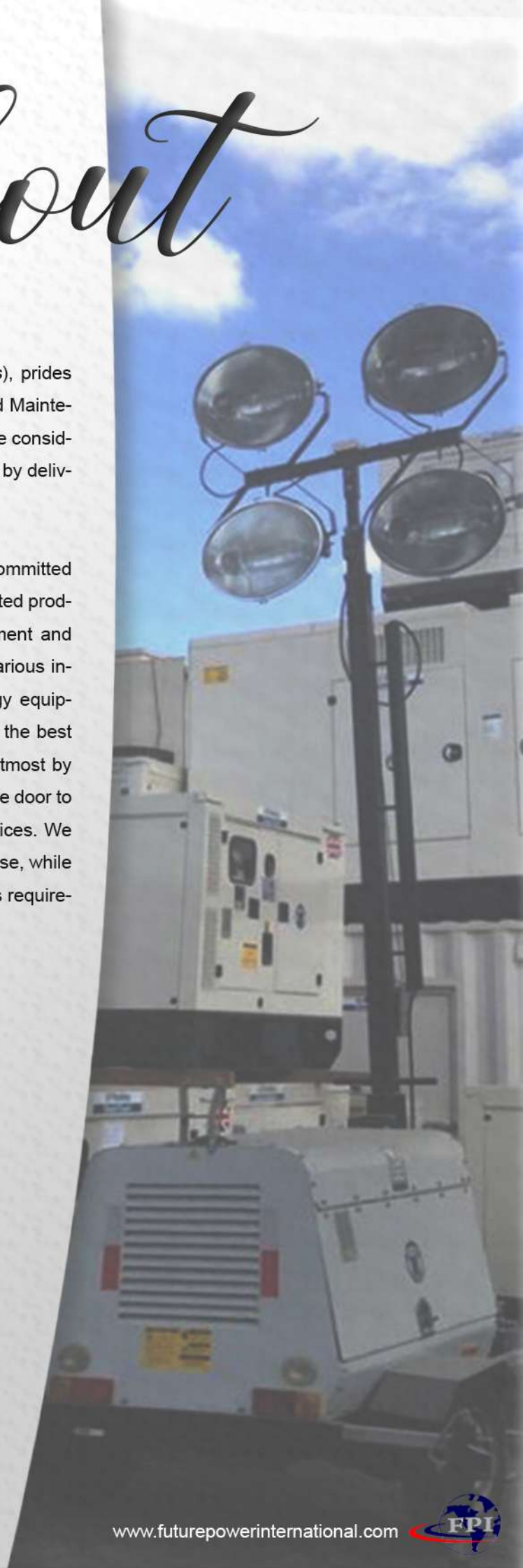
Our **Vision**

To be #1 supplier for Electric Power Generators focusing on Quality, Service, and 24/Hour support.

Our **Mission**

We achieve this vision by:

- Providing the best quality and range of products from leading manufacturers.
- Servicing and Maintaining all equipment 24/7 by experienced technicians.
- Delivering special flexible payment plans that cater to our customer needs



Area Of Expertise

Every Sector



We (FPI Machinery) provides a wide array of products for personal or commercial use.

We provide our expertise in every sector for Prime, standby and critical applications.

We have hundreds of generators currently in service worldwide, providing reliable solutions to a wide range of sectors. Which includes,

1. Data centers and critical applications

Helping safeguard businesses and their customers, our generators are trusted to provide back-up power in a wide range of critical applications – from data centers, hospitals and offices, through to power grids, health centers and universities.

2. Telecoms

Helping keep the world connected, our generators provide power to telecoms towers and equipment in remote locations.

3. Construction

We provide prime and standby energy to major construction projects helping keep workers safe and projects on track.

4. Retail, property and commerce

Professional power tech. (FPI generators) help to provide reliable power in offices, complexes, shopping malls and prestigious property developments internationally.

5. Industrial

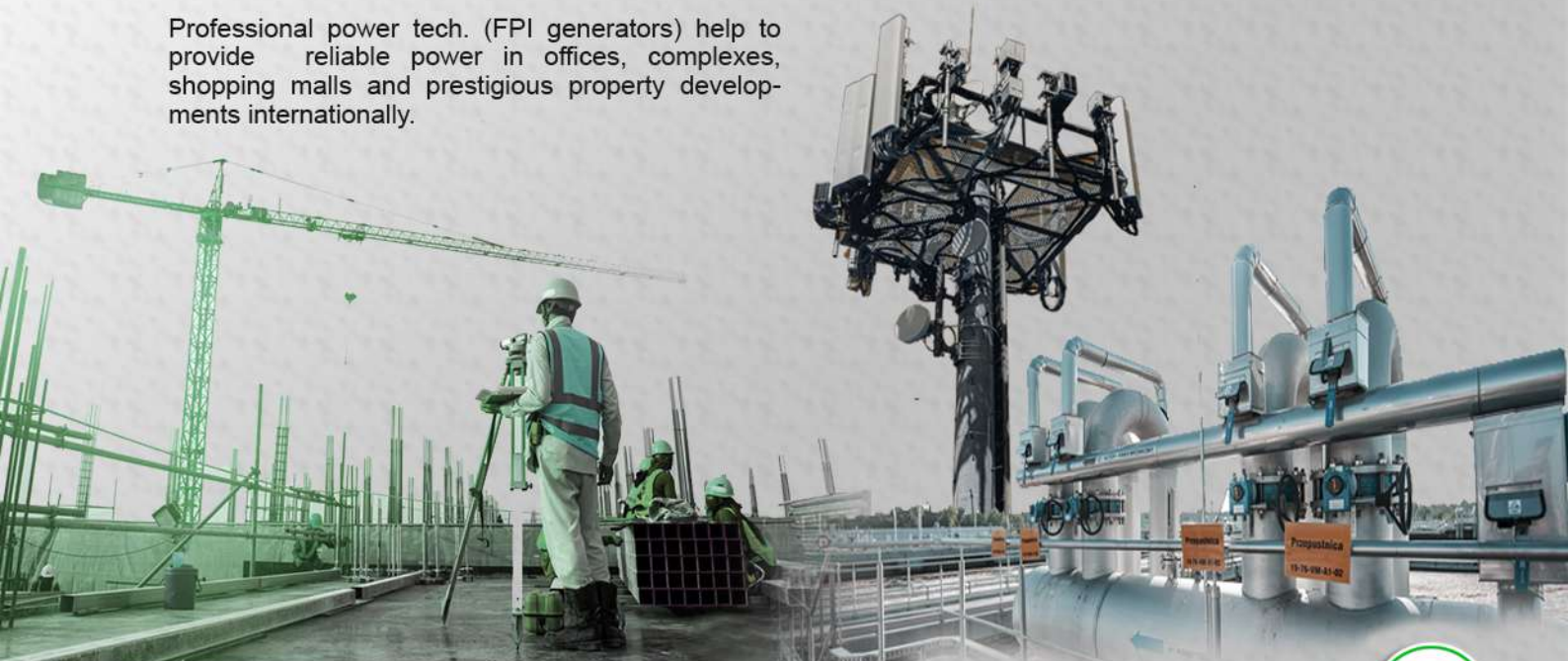
Our generator sets help to power the world's industry, from water treatment and chemical plants to drainage in deep and remote mines.

6. Hospitality

Our generators perform at fairs and festivals, rock concerts and operas, working quietly and reliably to ensure continuous power and uninterrupted enjoyment.

7. Remote Applications

Our generators provide mobile and temporary power in applications ranging from highway construction through to meeting the energy demands of remote communities or in areas with an unreliable energy grid.



Product Portfolio

COMPLETE SOLUTION



Our models are split into five categories:

Open generators



Canopy generators



Container generators



Mobile generator sets



Tower lights



KVA

FPI Machinery produces a wide range of generating sets with power outputs covering **10 – 3000 KVA**, all power nodes are available at 50Hz or 60Hz and various voltage range

Our product range includes small generators for standby domestic use, up to complete power stations supplying electricity to national grids

The ranges from 10 – 66 KVA offering you desirable power in a compact package to serve telecom munications, construction, residential and retail.

The 33– 275 KVA machines are generally used by construction, residential, agriculture, industrial and commercial.

The gensets powered from 275 – 710 KVA are also used by industrial, construction, mining, commercial, events and utility.

The largest range of gensets from 715 –3350 KVA are complex units used by data centers, healthcare, commercial, industrial, banking and power stations.

Generator Power Ranges:

~ 10 - 66 kVA

~ 33 - 275 kVA

~ 275 - 710 kVA

~ 715 - 3350 kVA



FPI MACHINERY

Product Portfolio

FPI GENERATOR SETS

A generator is a device that converts thermal energy into mechanical energy and then into electricity. In general, it consists of a motor and alternator coupled and mounted on a common base together with batteries, fuel tank, control panel and muffler.

ENGINE:

In FPI generator sets, leading engine brands that have state of the art technology and have compliance with ISO 8528, ISO 3046, BS 551 4, DIN 6271 standards, are being used. These engines with low fuel consumption, provide accurate speed setting and order, mount to the fuel pump, also have mechanic or electronic type governors.

ALTERNATOR:

In products FPI produced, leading alternator brands of the world that have state of the art technology, high quality, productivity and durability, are being used. All alternators, which pass necessary test process and found appropriate according to EC 60034-1; CEI EN 60034-1; BS 4999-5000; VDE 0530, NF 51 - 1 00,1 1 1; OVE M-1 0, NEMA MG 1 .22. standards, have bearing system that does not need maintenance, with electronic type voltage regulator providing voltage setting.

P
O
W
E
R
E
D
B
Y



Product Portfolio

FPI GENERATOR SETS



1. CHASSIS

Chassis is manufactured from steel that has features and durability for carrying burden of generator set. Thanks to its rigid structural design and anti-vibration mounts, it reduces vibration level to minimum. All chassis contain lifting lugs. Apart from chassis that are produced by FPI, special solutions that design in accordance with customer desires, make transportation and positioning easier.

2. CONTROL PANEL

Standard control panel, that is used in FPI generator sets, ensures comfortable and safe usage. All measured and statistical parameters, operating modes, notice and alarms and condition of generator, are monitored easily from the control panel. On the front of the panel's metal body has electronic control module and the emergency stop button and the panel's metal body is made of steel sheet and is painted with electrostatic powder paint. FPI offers panel design and solutions that comply with special requirements of customers as well as quality standard panels.

3. FUEL TANK

In less than 800 kVA power generator sets, fuel tank is produced integrated to the chassis. In more than 800 kVA power generator sets, rectangular type fuel tank is provided with generator set separately if required by customer. In all types of fuel tank have its level and indicator.

4. CANOPY

FPI Standard Canopies' default features are as follows:

- 2 or 4 points transport possibility according to canopy size
- Hidden exhaust inside the canopy
- Emergency stop button located on the canopy
- Improved air suction channel to ensure proper cooling in the canopy
- Radiator air outlet and exhaust with designed towards above
- Lid on cab that provides to be filled up water easily to the radiator
- Amplified paint system against corrosion and rust
- Improved performance in terms of sound insulation
- Demounted parts that make transportation and maintenance easier



Product Portfolio

FPI SWITCH GEAR



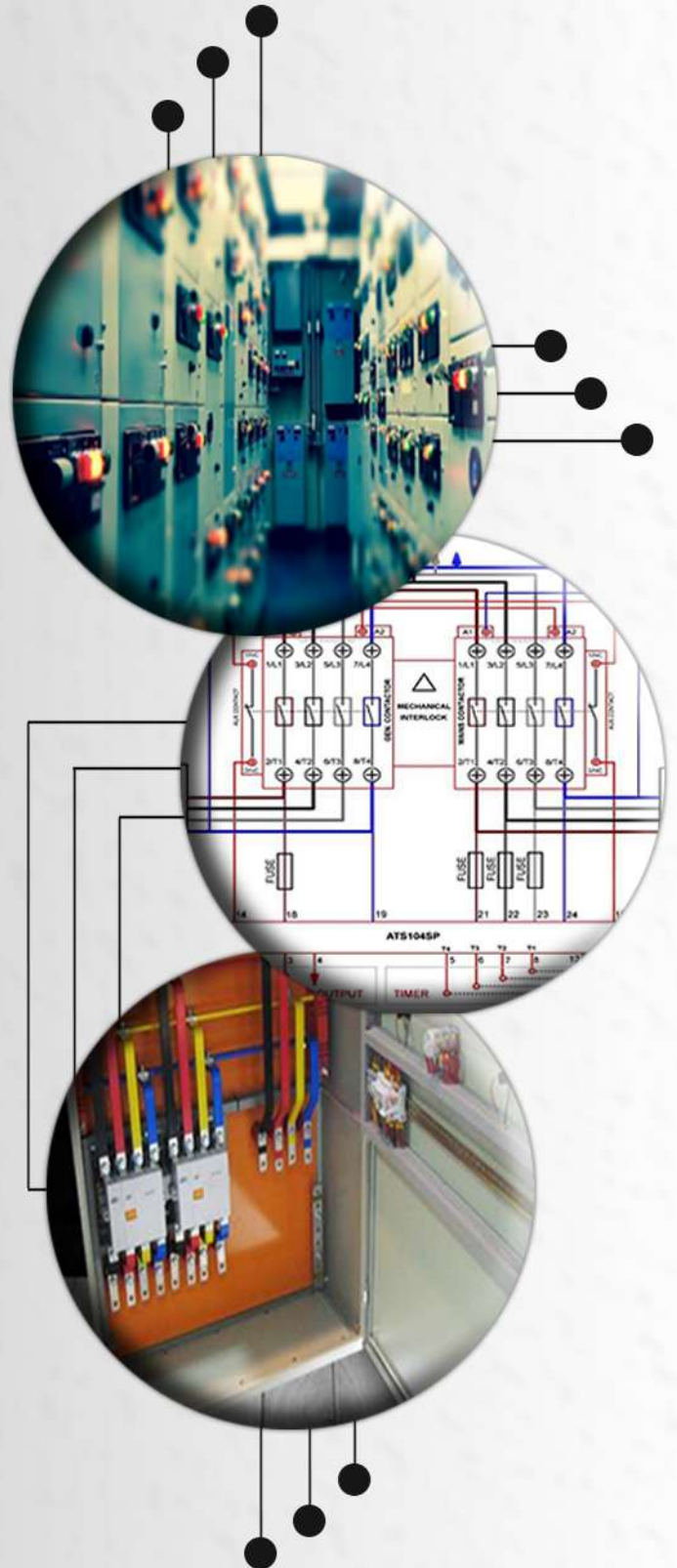
Automatic Transfer Switch (ATS Panel)

The Automatic Transfer Switch makes the switching between the main sources (usually the network) and the secondary source (usually the generator), if the main source fails. The Automatic Transfer Switch is automatically operated and is also used to interconnect power gensets operating in alternation. We recommend installing the Automatic Transfer Switch when the power genset operates in an emergency mode.

— ATS PANEL

Asynchronization Panels:

Synchronization Switchgear Panel also referred to as Paralleling Switchgear provides a means to synchronize and parallel multiple generators of same or different sizes make on a common bus. Reliability, Redundancy, Flexibility, Maintainability, Economy are some of the advantages of Synchronization Switchgear





Product Portfolio

FPI SPARE PARTS



Genuine Spare parts:

When you need parts and service, our Team has instant access to everything it needs to support your generator.

Easily available through our team, many with next day delivery

– key parts include:

- Diesel Engine Oil
- Coolant
- Oil filters
- Fuel filters
- Cooling systems (radiators, pumps,
- Fuel injection
- Turbochargers
- starter motors and alternators
- Seals



After Sales Service:

Putting the Customer First – A Commitment to World-Class Service and Support In everything we do, our focus is on putting the customer first. Wherever you are, we are on hand with the right parts, the best advice, the most advanced diagnostics and the fastest response – all designed to minimize machine downtime. Keeping your machines running is the number one priority for us. we are able to respond quickly to every need.



Choice
for parts and services



FPI MACHINERY

Generator Model	Engine Model PERKINS	Alternator Model LEROY SOMER	Alternator Model STAMFORD	PRIME		STAND BY		Fuel Con (L/hr)		
				KW	KVA	KW	KVA	75%	PRIME 100%	STAND BY 110%
FPI 10	403A-11G1	TAL-040-C	PI044E	7	9	8	10	2	2.6	2.9
FPI 15	403A-15G1	TAL-040-C	PI044F	10.4	13	12	15	3.05	4.3	5.04
FPI 22	404A-22G1	TAL-040-F	SOL2G1	16	20	18	22	4	5.3	6.1
FPI 33	1103A-33G	TAL-042-C	SOL2P1	24	30	26	33	5.4	7.2	8.1
FPI 50	1103A-33TG1	TAL-042-F	UC224D	36	45	40	50	8.2	10.8	11.7
FPI 66	1103A-33TG2	TAL-042-H	UC224E	48	60	53	66	10.4	14.6	15.9
FPI 88	1104A-44TG2	TAL-044-C	UC22G	64	80	70	88	14	18.7	20.5
FPI 110	1104C-44TAG2	TAL-044-D	UCI274C	80	100	88	110	17.1	22.6	24.9
FPI 150	1106A-70TG1	TAL-044-H	UCI274E	108	135	120	150	22.7	30.28	33.8
FPI 165	1106A-70TAG2	TAL-044-J	UCI274F	120	150	132	165	24.7	33.4	36.1
FPI 200	1106A-70TAG3	TAL-046-A	UCI274G	144	180	160	200	44.9	41.6	44.6
FPI 220	1106A-70TAG4	TAL-046-B	UCI274H	160	200	175	220	46	45.8	49.4
FPI 250	1206A-E70TTAG3	TAL-046-D	UCD274J	200	250	220	275	41.5	56.9	64.5
FPI 250	1506A-E88TAG2	TAL-046-C	UCD274J	184	230	200	250	35.7	48.6	51.5
FPI 275	1506A-E88TAG3	TAL-046-D	UCD274K	200	250	220	275	41.6	55.5	60.7
FPI 330	1506A-E88TAG5	TAL-046-F	HC444D	240	300	264	330	48	64.9	73.1
FPI 400	2206C-E13TAG2	TAL-046-H	HC444E	280	350	320	400	58	75	82
FPI 450	2206C-E13TAG3	TAL-047-A	HC444F	320	400	360	450	65	85	93
FPI 500	2506C-E15TAG1	TAL-047-B	UCI544C	360	450	396	495	73	99	109
FPI 550	2506C-E15TAG2	TAL-047-C	HCI544C	400	500	440	550	81	106	114
FPI 660	2806C-E18TAG1A	TAL-047-E	HCI544E	480	600	528	660	96	129	134
FPI 700	2806A-E18TAG2	TAL-047-F	HCI544F	520	650	560	700	97	132	143
FPI 825	4006-23TAG2A	TAL-049-C	HCI634G	600	750	660	825	122	155	169
FPI 900	4006-23TAG3A	TAL-049-C	HCI634G	640	800	720	900	130	172	195
FPI 1000	4008TAG1A	TAL-049-D	HCI634	720	900	800	1000	143	195	218
FPI 1100	4008TAG2	TAL-049-E	HCI634J	800	1000	880	1100	163	215	240
FPI 1375	4012-46TWG2A	LSA50.2 M6	PI734B	1000	1250	1100	1375	196	259	288
FPI 1650	4012-46TAG2A	LSA50.2 L8	PI734E	1200	1500	1320	1650	237	310	341
FPI 1856	4012-46TAG3A	LSA52.3 S5	PI734E	1350	1688	1485	1856	275	370	405
FPI 2000	4016TAG1A	LSA52.3 S5	PI734E	1480	1850	1600	2000	277	383	424
FPI 2250	4016TAG2A	LSA52.3 S6	PI734F	1600	2000	1800	2250	316	434	483
FPI 2500	4016-61TRG3	LSA52.3 L9	PI734E	1800	2250	2000	2500	344	470	529





GENERATOR SELECTION CHART

Open Generator				Silent Generator						Fuel Tank Capacity (L)		QUANTITY IN 20 FT CONTAINER	QUANTITY IN 40 FT CONTAINER	
LeFPIh mm	Width mm	Height mm	Weight WO.F(Kg)	LeFPIh mm	Width mm	Height mm	Weight WO.F(Kg)	PI weight	UPS					
1556	700	1197	230	2022	920	1140	557	637	314	100	L	12	26	
1556	700	1197	270	2022	920	1140	616		402	100	L	12	26	
1556	700	1220	344	2172	922	1240	775	717	485	100	L	10	24	
1700	700	1345	683	2322	972	1260	914	802	772	100	L	8	16	
1700	700	1345	737	2522	972	1260	994	1188	841	123	L	8	16	
1700	700	1345	750	2522	972	1260	1029	1285	882	123	L	4	8	
2006	900	1410	754	2822	1122	1375	1283	1550	965	190	L	4	8	
2006	900	1410	1014	2822	1122	1375	1449	1724	1200	190	L	2	6	
2546	950	1512	1093	3222	1122	1470	1737	2156	1250	280	L	2	6	
2546	950	1612	1186	3222	1122	1800	1877	2156	1310	400	L	2	6	
2546	950	1612	1357	3222	1122	1800	2028	2201	2100	400	L	2	6	
2546	950	1612	1387	3222	1122	1800	2056	2201	2100	400	L	1	3	
2700	1150	1870	1490	3800	1300	1900	1490			480	L	1	3	
2900	1150	1870	1737	3822	1422	1900	1737	2201		460	L	1	2	
2900	1150	1850	1786	3822	1422	1900	1786	2932	2200	460	L	1	2	
2900	1150	1870	1866	3800	1400	2100	1866	3228	2900	520	L	1	2	
3500	1150	2215	2751	4822	1722	2250	2751	3816	3150	865	L	1	2	
3500	1150	2215	2839	4822	1722	2250	2839		3180	865	L	1	2	
3500	1150	2215	2976	4822	1722	2250	2976		3750	865	L	1	2	
3500	1150	2215	2976	4822	1722	2250	2976		3760	865	L	1	2	
3500	1550	2290	3233	4822	1722	2400	5538			1055	L	1	2	
3500	1550	2290	3316	4822	1722	2400	5621		4840	1055	L	1	2	
3800	1710	2495	4159	5822	2172	2540	4159		6100	1800	L	1	2	
3800	1710	2495	4159	5800	2172	2540	4159		6300	1800	L	1	2	
4700	2050	2300	7590	6058	2438	2591	12590			Seperated standing fuel tank		20 FT HC CONTAINER		
4700	2050	2300	7611	6058	2438	2591	12611						20 FT HC CONTAINER	
5100	2220	2300	9154	12192	2438	2896	19154						40 FT HC CONTAINER	
5100	2220	2350	11580	12192	2438	2896	21580						40 FT HC CONTAINER	
5100	2220	2400	11580	12192	2438	2896	21580						40 FT HC CONTAINER	
6600	2250	2750	16500	12192	2438	2896	26500						CUSTOMIZED CANOPY	
6600	2250	2750	16500	12192	2438	2896	26500						CUSTOMIZED CANOPY	
6900	2250	2750	17500	12192	2438	2896	27500						CUSTOMIZED CANOPY	





MEHDI GROUP

HEAD OFFICE



MACHINERY (FZE)

www.futurepowerinternational.com

+971 6 5466067
+971 54 4473850

A4 - 16
Sharjah Airport Free Zone,
Sharjah.

HOTLINE

**800 MEHDI
63434**



www.futurepowerinternational.com

| info@futurepowerinternational.com