

**COME HOME TO DURABLE
PROTECTIVE MATTING CONCEPTS**

An ISMAT Group Company



Anti-Fatigue Mats

Kitchen Link Mat



Features:

- ▶ Provides comfort and fatigue relief from prolonged standing in the workplace. Improves worker efficiency and productivity
- ▶ Reduces glass breakage and protects dropped utensils and tools.
- ▶ Punched mat provides effective drainage of any liquid leaving the surface dry and safe.
- ▶ Modular, square shaped and light weight for easy installation.
- ▶ Molded hidden interlocking system with connectors can be made to make 90 degree angles.

Available Thickness (MM)

14

Available Dimension (CM)

90X90

Type

Punched & Unpunched

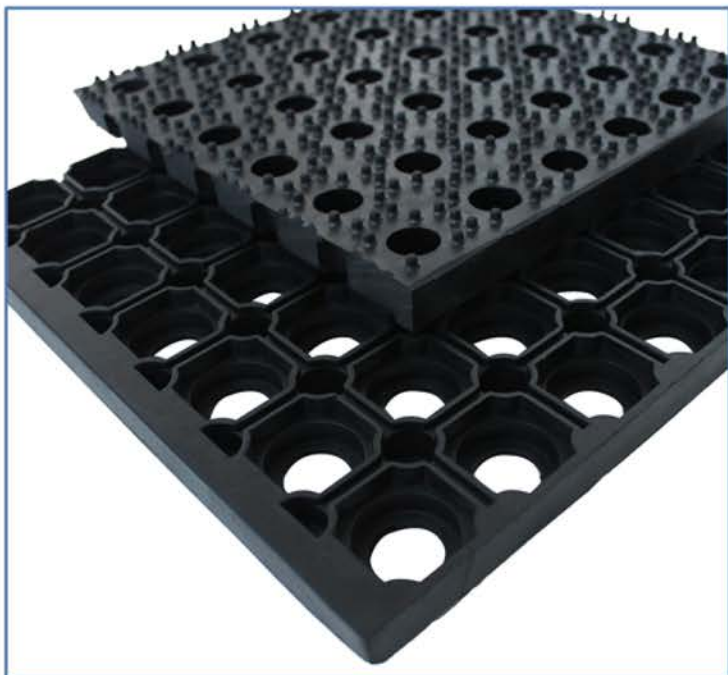
Colors





Anti-Fatigue Mats

HOLLOW MAT



Features:

- ▶ Water resistant
- ▶ Easy to install
- ▶ Extremely tough and durable
- ▶ Inter-connectable
- ▶ Flexible
- ▶ Impact absorbing
- ▶ Can be cut to fit size

Available Thickness (MM)

16 / 22

Available Dimensions (CM)

40X60 | 80x120 | 100x100 | 100x150

Type

Punched & Unpunched

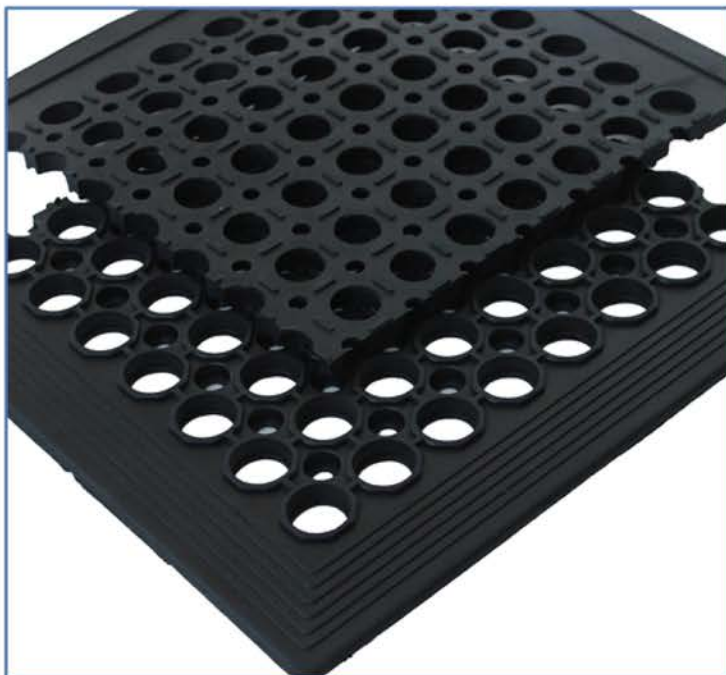
Colors





Anti-Fatigue Mats

VIP Topdeck Mat/ Cactus mat



Features:

- ▶ Provides comfort and fatigue relief from prolonged standing in the workplace. Improves worker efficiency and productivity
- ▶ Reduces glass breakage and protects dropped utensils and tools.
- ▶ Punched mat provides effective drainage of any liquid leaving the surface dry and safe.
- ▶ Modular, square shaped and light weight for easy installation.

Available Thickness (MM)

13 / +/-1

Available Dimensions (CM)

90X150

Type

Punched & Unpunched

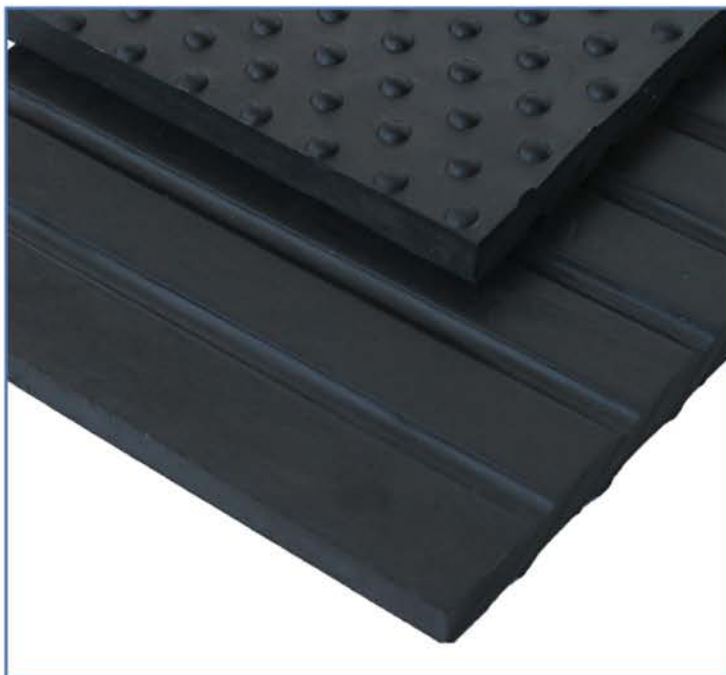
Colors





Anti-Fatigue Mats

EQUINE / DAIRY MATS



Features:

- ▶ Easy to clean and disinfect
- ▶ Non-porous, non-absorbent,
- ▶ Dust, spore, smell and allergy free for humans and animals
- ▶ Insulation from cold, slip resistant
- ▶ Tough and long lasting
- ▶ Slip-resistant surface
- ▶ Minimizes trip hazards
- ▶ Easy to fit to concrete floors
- ▶ Stable, strong and rigid
- ▶ Provides more comfort for horses

Available Thickness (CM)

13 | 15 | 17 | 20

Available Dimensions (FT)

4 X 6

Type

Bubble | Hammer

Colors





WELCOME



+971 55 325 2253 | +971 55 393 8520



sales@terrainfloorings.com



matting.terrainfloorings.com



**Qusais Industrial Area Third
DUBAI, U.A.E.**

terrain

PLAY THE SPORT, LEAVE THE SURFACE TO US!



PLAY THE SPORT, LEAVE THE SURFACE TO US!

A woman with long brown hair tied back, wearing a black short-sleeved athletic top, red leggings, and black sneakers with pink laces, is running on a blue track. She is wearing white earbuds. The track has white lane markings. In the background, there is a green field and a white fence under a clear blue sky with some light clouds.

COME HOME TO DURABLE SPORTS FLOORING CONCEPTS

A premier manufacturer of rubber flooring surfaces in the region, we specialise in acrylic, wooden, vinyl and recycled rubber solutions for a diverse range of sports surfaces. Developed to exacting standards of international specifications, our products come in the latest designs, colours, sizes and shapes. What's more, we are eco-friendly and durable too.

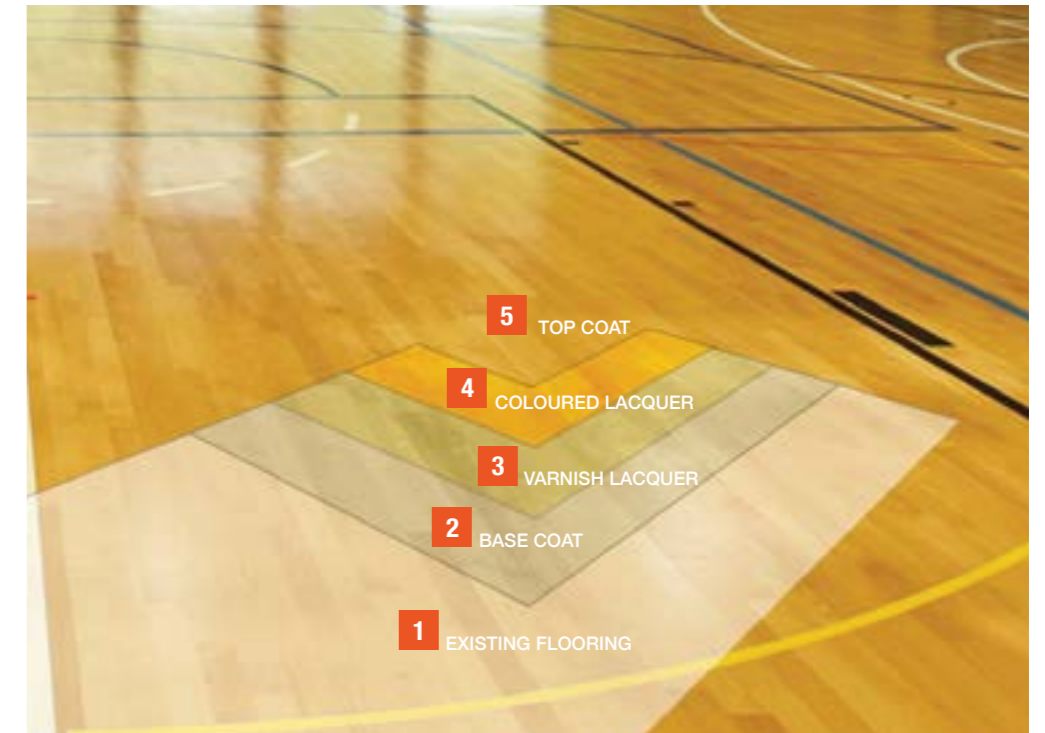
“ At Terrain, we believe in doing business the honest and ethical way. Our commitment to excellence starts from the ground up. We secure the highest quality raw materials and ensure state-of-the-art manufacturing practices, to deliver cutting-edge products in a timely manner at the most competitive price.”

— Ali Hussain Yakub (Founder)



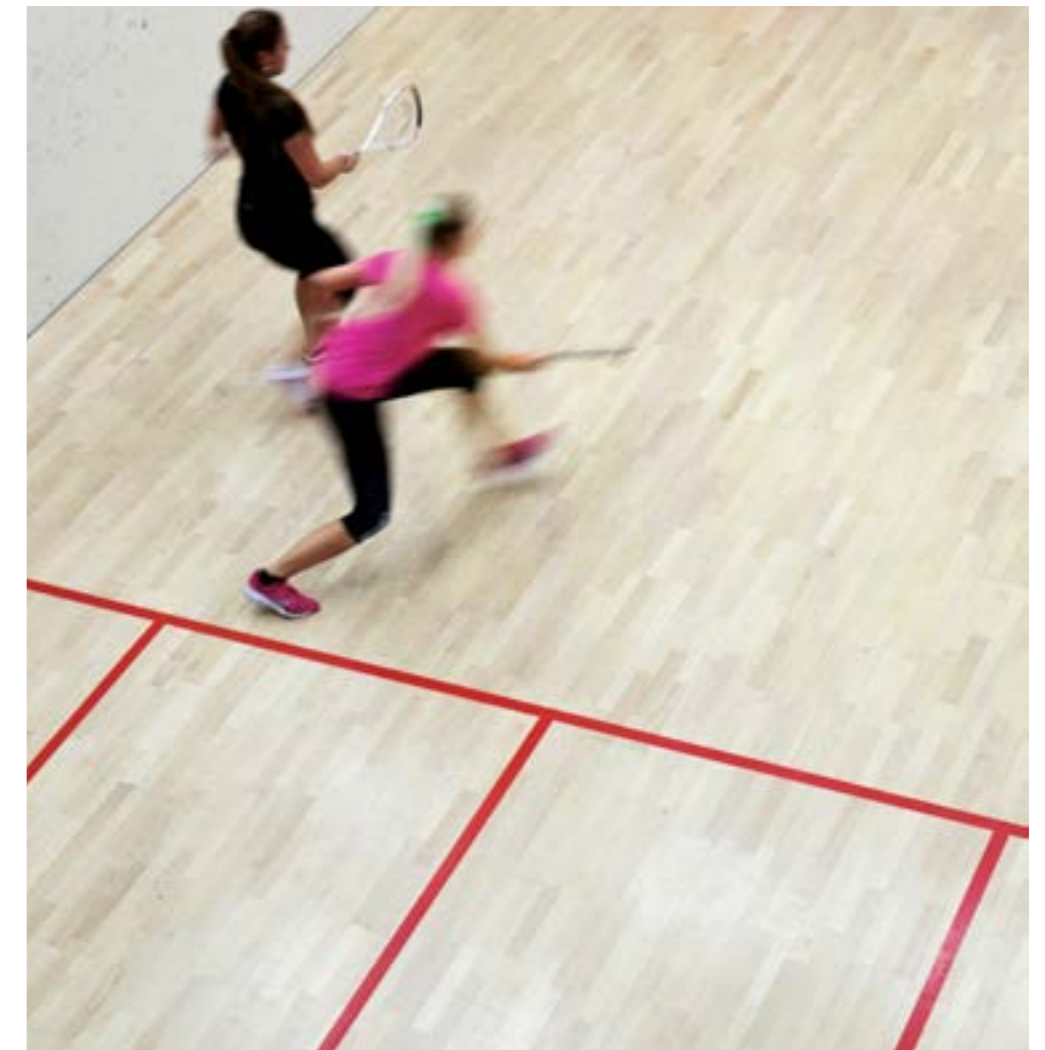
INDOOR FLOORING

We understand that choosing the wrong flooring option could cost you your reputation in the form of injury to players, maintenance downtime and upset customers. Terrain is one of the largest providers of sports flooring solutions in the GCC. We offer a range of indoor surface solutions, allowing you to choose the flooring that works best for your conditions. The surface types that we offer are mostly available in stock and can be installed immediately. Our best-in-class installation capabilities ensures that your indoor floors perform for a long time even with constant use. When you work with us, you are accessing quality products, consultative objective advice, and cutting-edge site management and installation skills.



WOODEN FLOORING

- 1 EXISTING FLOORING
- 2 BASE COAT
- 3 VARNISH LACQUER
- 4 COLOURED LACQUER
- 5 TOP COAT



SQUASH COURT



PU FLOORING

Our PU flooring is constructed on site and therefore can be varied as required by the customer. Multiple colour options and some design patterns are available as well.

- 1 PU PRIMER**
Applied by brush on asphalt surfaces or on waterproof concrete surfaces without rising humidity issues
- 2 SBR/SBR MAT**
Mixture of PU BINDER plus SBR granules in granulometry of 0.5-2mm. Applied by paver machine in thickness
- 3 SEALER**
Used for sealing porous wet-pour shock-pad sub-floor of sports floorings systems.
- 4 SELF LEVELLING**
It is combined with wet-pour, shock-absorbent, resilient rubber cushion as substrate to create multi-purpose sports flooring systems
- 5 TOP COAT**
It creates an easy-to clean, mat coloured surface. It is applied on the polyurethane self-levelling coating as final surface

HANDBALL COURT/NETBALL • BASKETBALL COURT • TENNIS COURT • VOLLEYBALL COURT • JOGGING TRACK • SQUASH COURT • INDOOR GYM
INDOOR FOOTBALL



HANDBALL COURT / NETBALL / INDOOR FOOTBALL



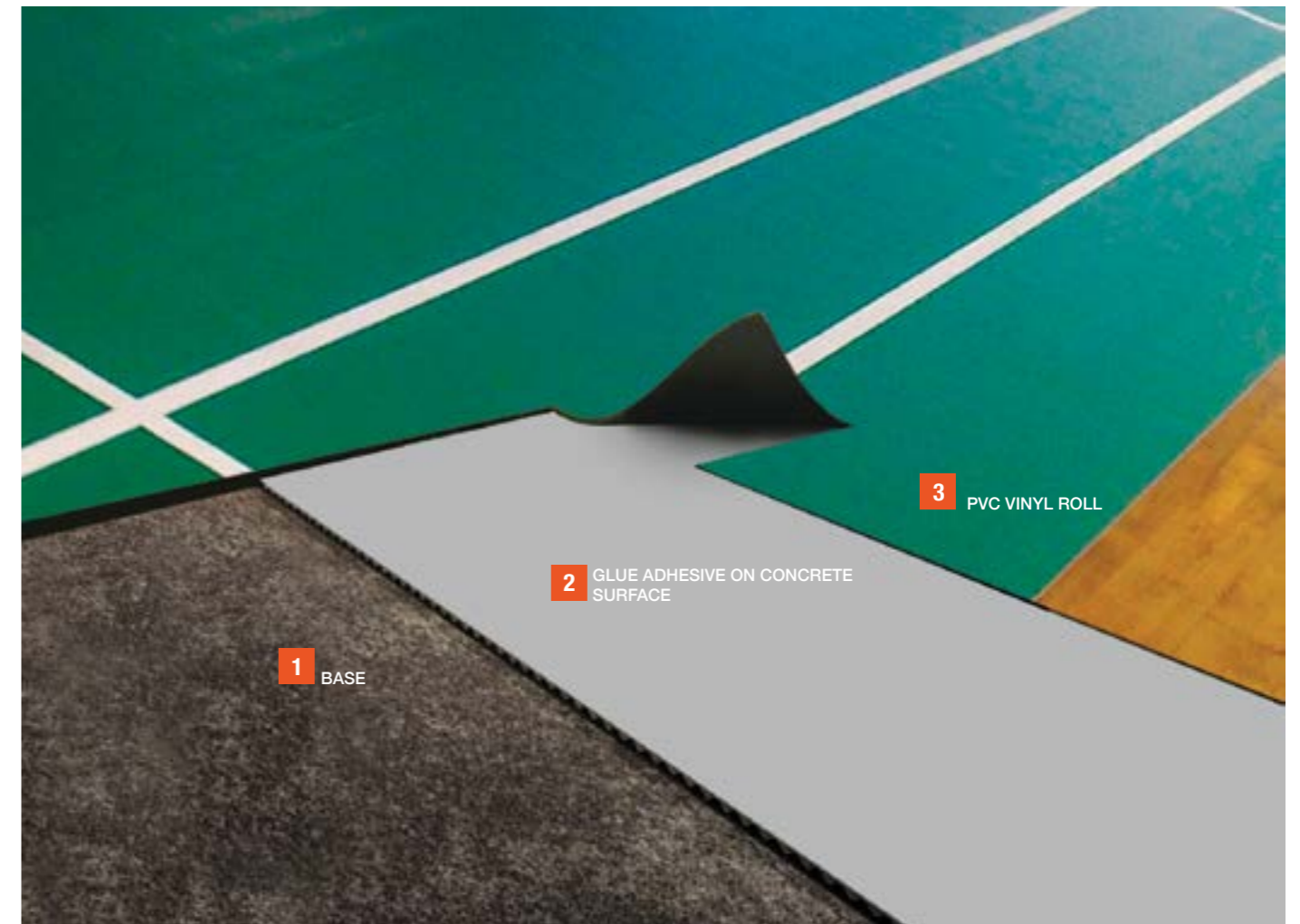
BADMINTON



INDOOR GYM



SQUASH COURT



PVC VINYL FLOORING

Sports vinyl is the most popular product used for sports today in Middle East due to its versatility, ease of maintenance and vibrant colours. Terrain sports vinyl product has been tested for all sports flooring characteristics under EN norms and passes all criteria for things such as ball bounce, shock absorption, vertical deformation, abrasion resistance and others.

- 1 BASE CONCRETE**
- 2 GLUE ADHESIVE ON CONCRETE SURFACE**
- 3 PVC VINYL ROLL**

HANDBALL COURT/NETBALL • BASKETBALL COURT • TENNIS COURT • VOLLEYBALL COURT • JOGGING TRACK • SQUASH COURT • INDOOR GYM
INDOOR FOOTBALL



JOGGING TRACK



VOLLEYBALL COURT



BASKETBALL COURT



TENNIS COURT

OUTDOOR FLOORING

Choosing the right vendor for outdoor areas is critical as the surfaces are complex to install and degrade quicker owing to demanding weather conditions such as intense dust, sand, harsh heat and sun in the region. The right quality and installation process can therefore, make the difference between playing surfaces that lasts for 7-10 years and surfaces that degrade quickly. Terrain Sports offers a wide range of outdoor sports flooring. Our best-in-class project management skills from experienced site managers and installers, along with high quality products, sourced from leading suppliers in the world, deliver solutions that last. Our sophisticated process control and strict quality monitoring is inbuilt into our work-flow, right from order processing through installation and handover.



FULL POUR



- 1 PRIMER
- 2 BASE LAYER (5-6MM)
- 3 INTERMEDIATE LAYER (4-5MM)
- 4 TOP LAYER (4-6MM)

SPRAY COAT

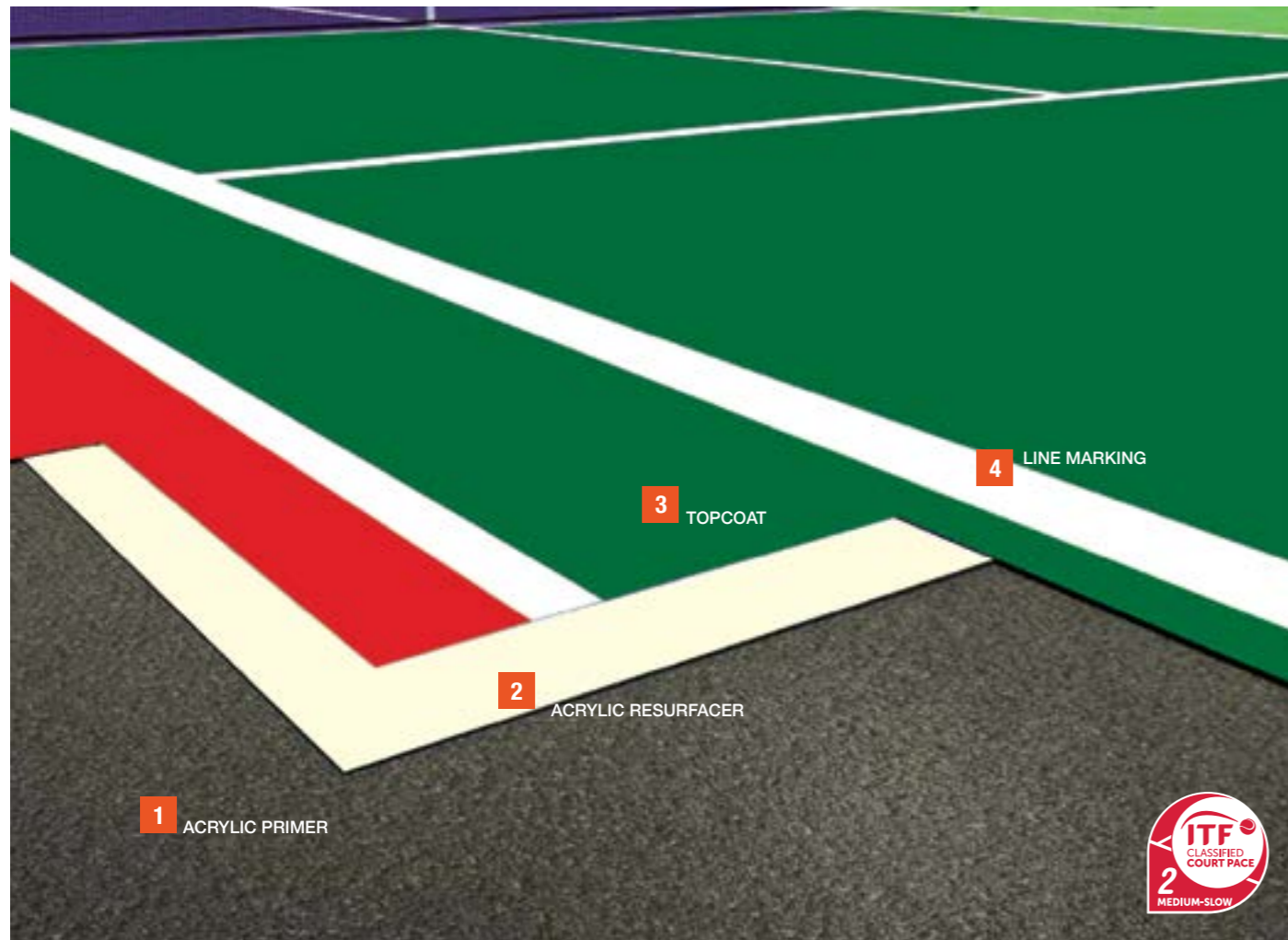


- 1 PRIMER
- 2 BASE LAYER (11-12MM)
- 3 TOP LAYER (1-2MM)

SANDWICH SYSTEM



- 1 PRIMER
- 2 BASE LAYER (10-11MM)
- 3 PORE SEALER
- 4 TOP LAYER (2-3MM)



ACRYLIC-TERRAIN HARD COAT SYSTEM

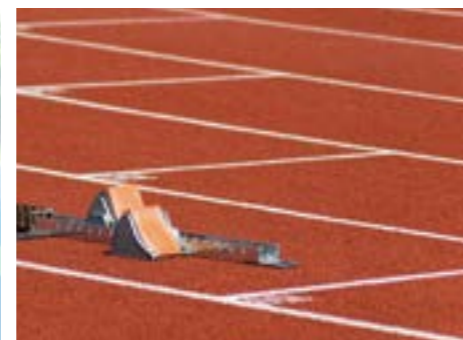
- 1 ACRYLIC PRIMER
- 2 ACRYLIC RESURFACER
- 3 TOPCOAT
- 4 LINE MARKING



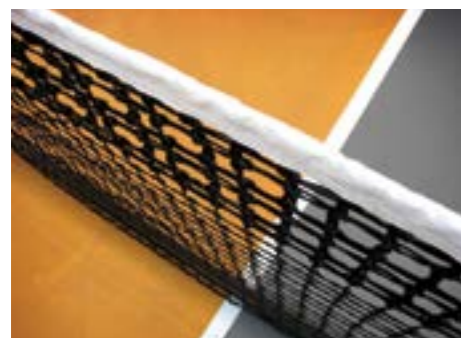
TENNIS COURT



PLAYGROUND



ATHLETIC TRACK



NETBALL



BASKETBALL COURT



FOOTBALL COURT

RUBBER TILES

Terrain rubber tiles flooring is a durable, easy-to-maintain, anti-slip surface in square or interlocked form with varying thickness ranges of up to 500mm x 500mm. Specific advantages of rubber flooring are their acoustic soundness and toughness, making them the ideal choice for surfaces that are prone to a lot of wear and tear, such as places like children's play area, gym Floorings, Equine flooring, walk ways etc.

Material – Each tile is made from recycled SBR rubber from California recycled tires to provide a “green” rubber flooring solution.
 Size – Tiles are 500mm x 500mm
 Thickness – Available in 20mm, 25mm, 30mm, 35mm, 40mm, 45mm

ACRYLIC - TERRAIN CUSHION PLUS

Terrain Cushion Plus is an ultra-cushioned acrylic system which comes with an SBR Rubber Carpet followed by Acrylic layers with a total thickness of up to 6mm.

1. Acrylic Primer
2. Acrylic Resurfacer
3. Rubber Layer
4. Rubber Layer
5. Top Coat
6. Proactive Coat
7. Line Marketing



WET POUR FLOORING

Terrain wet pour flooring is high impact absorbent and can be laid in any shape or pattern. It is also available in a wide array of colours.

Materials-comes in two layers-one is a Black SBR under layer and 6-10 MM thick EPDM Top Layer line
 Thickness-standard thickness are 15 MM, 25 MM, 36mm, and 45mm etc.
 Customizable thickness

ACRYLIC-TERRAIN CUSHION SYSTEM

The Terrain Cushion System comes as an eight layer acrylic product with a thickness of up to 3mm.

1. Acrylic Primer
2. Acrylic Resurfacer
3. Rubber Layer
4. Topcoat
5. Line Marketing
6. Glosscoat



PU FLOORING

Our PU flooring is constructed on site and therefore can be varied as required by the customer. Multiple colour options and some design patterns are available as well.

1. PU Primer - Applied by brush on asphalt surfaces or on waterproof concrete surfaces without rising humidity issues.
2. SBR / SBR Mat - Mixture of PU BINDER plus SBR granules in granulometry of 0.5-2mm. Applied by paver machine in thickness
3. PU Sealer - Used for sealing porous wet-pour shock-pad subfloor of sports floorings systems.
4. PU Self Level - It is combined with wet-pour, shock-absorbent, resilient rubber cushion as substrate to create multipurpose sports flooring systems.
5. Top Coat - It creates an easy-to clean, mat coloured surface. It is applied on the polyurethane self-leveling coating as final surface.



JOGGING TRACK

TERRAIN WET-POUR ACRYLIC

Terrain Wet Pour Acrylic system is a highly cushioned system with a total thickness of 8mm – 14mm.

1. Asphalt / Concrete
2. SBR Shock Pad/Rubber Mat
3. Acrylic Top Coat
4. Line Marketing





EDUCATION

Terrain Sports offers you flooring and furniture packages to create a safe, nurturing and vibrant environment for children to learn and have fun. We are the one-stop solution store providing quality flooring products & services, furniture and sports infrastructure, thereby giving you a holistic package that translates into better quality and easy project monitoring for your institution.

Safety is paramount on surfaces little children tread. For other uses too, these tiles ensure comfort under the feet. Let's look at some important reasons they make perfect solutions for playgrounds, childcare facilities and many other venues.

- They are versatile, durable and slip-resistant
- Playground mats and tiles significantly reduce the risk of injuries
- Easy installation allows for a simple 'Do it Yourself' option
- They provide excellent drainage and easy cleaning
- These tiles don't splinter so cannot be swallowed by children

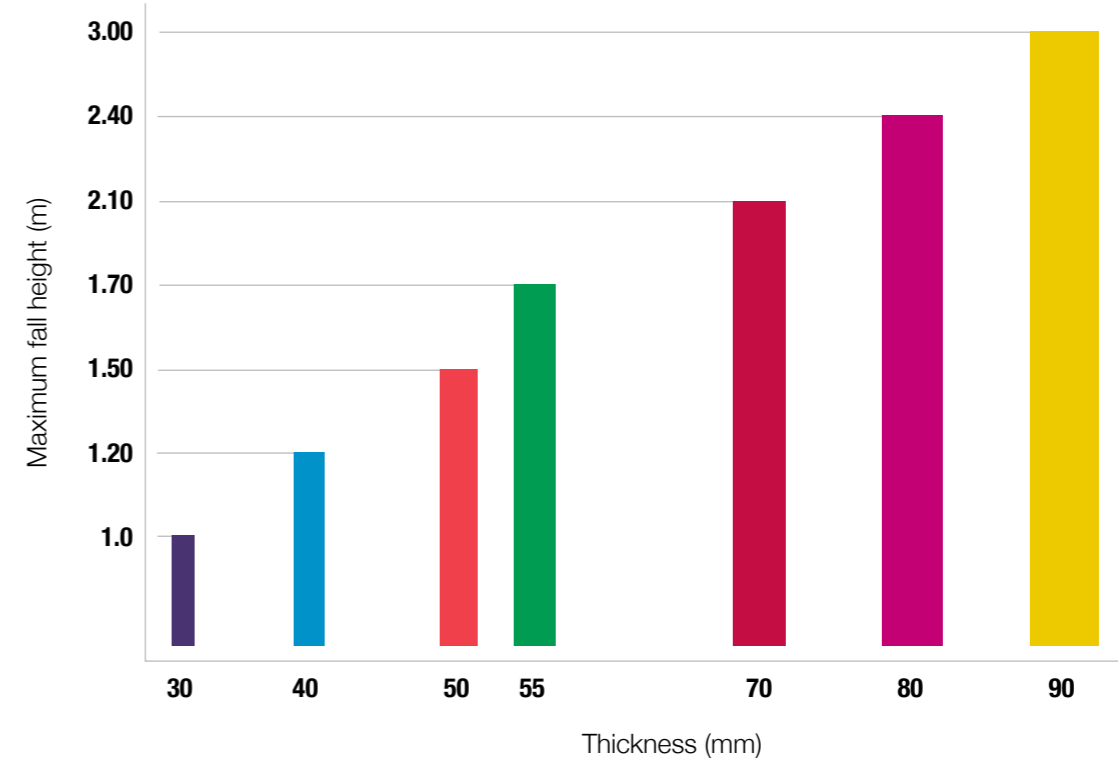


RUBBER TILES



WET-POUR FLOORING

CRITICAL FALL HEIGHT CHART



PRODUCTS

TERRAIN STANDARD SYSTEM

TERRAIN CUSHION SYSTEM

TERRAIN CUSHION PLUS SYSTEM

WET-POUR ACRYLIC CUSHION

IMPERMEABLE SANDWICH SYSTEM

RUBBER FLOORING SYSTEM

POLYPROPYLENE MODULAR FLOOR TILES

ARTIFICIAL GRASS

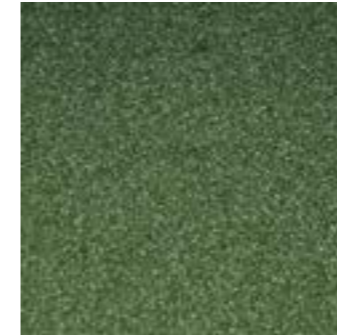
PU FLOORING

GYM FLOORING & HOSPITALITY

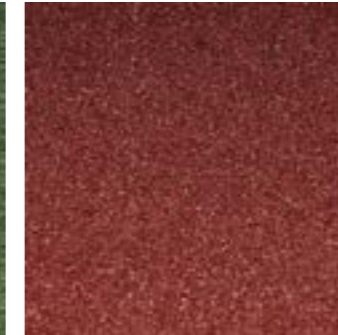
RUBBER PAVERS

COLOURS

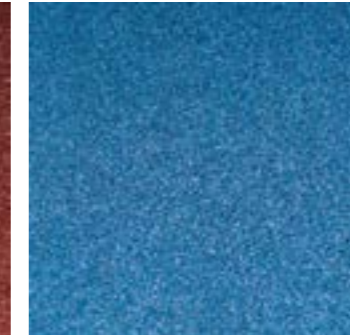
CLASSIC COLOURS



Citrine



Russet

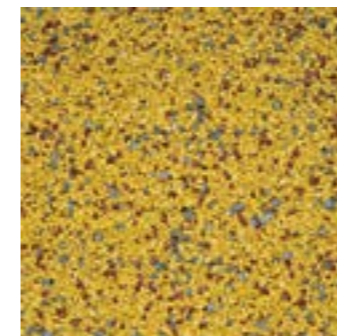


Sapphire



Cerulean

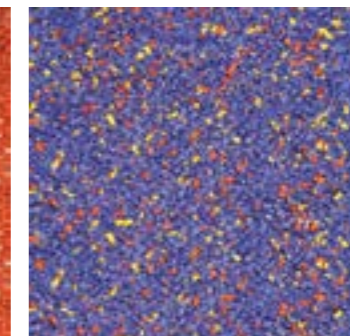
PETALS



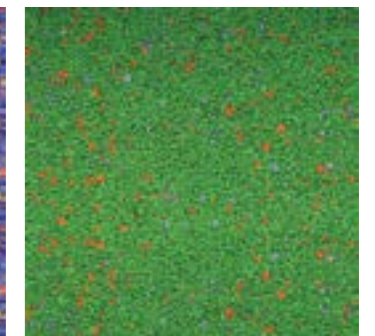
Souzan



Lennor

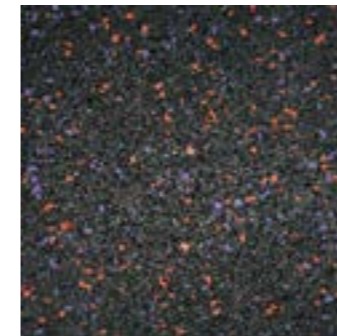


Peony

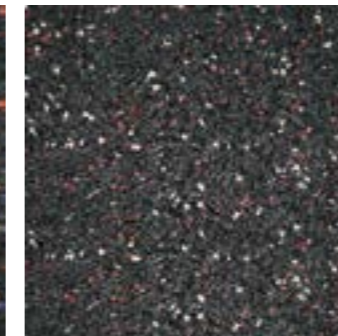


Akina

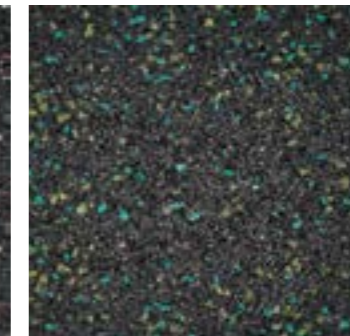
GALAXIES



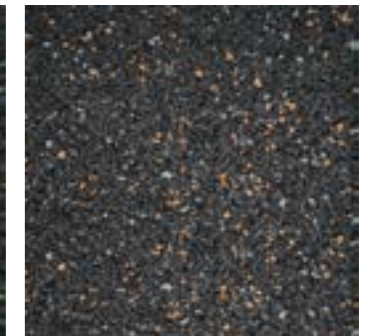
Sugar Berry



Silk Maple



Lance Wood



Water Hickory



terrain
PLAY THE SPORT. LEAVE THE SURFACE TO US!

**Al Khaleej Polymers Rubber
& Plastic Industries LLC**

Plot No. 7 & 28
AL Ghail Industrial Area
Ras Al Khaimah. UAE
Phone: +971 7 258 93 73
+971 6 534 58 81
FAX: +971 6 534 58 83
info@terrainfloorings.com
www.terrainfloorings.com

AN ISMAT GROUP COMPANY



terrain

PLAY THE SPORT. LEAVE THE SURFACE TO US!

PRODUCT CATALOG

RECYCLED FLOORING CONCEPTS

An ISMAT group company



**It's more than
what you see
on the surface.**

**We are in the business of making
earth look beautiful.**

Now that, it isn't just a factor of our beautifully crafted rubber surfaces but also the material that goes in making them. It's recycled rubber. It is better suited to make non-slip, maintenance-free surfaces, and it also doesn't add to the burden on natural resource. Well, if that makes our attractive rubber surfaces all the more attractive, wait till we impress you with our prowess in design, beautiful bright colours and range of Rubber Floorings .

**We are
a part of
the ISMAT
group and
have been
in the
business of
rubber
since 1994.**

Flexible like rubber, Firm like rock.

- We like to provide a Terrain which is safe and healthy for our children to play on and also last longer than other surfaces.
- We are a part of the ISMAT group and have been in the business of rubber since 1994.
- Hence, we Know Rubber better than others.
- We know what ingredients and mix make the best tile, we know which design will provide the best impact absorption and we also know how to make the tiles last longer!
- We take care to source the best raw material from reputed manufacturers and certify that the binders and pigments used are all of European origin.
- Our tiles are used in the extreme weather conditions of the Middle East and this is a testimony to our quality.
- Today, we are one of the largest manufacturer of crumb rubber products in the region with an annual output of 1,000,000 square meters of tiles.



“
**Binders & Pigments
 used are all of
 European Origin**”

04

05

Table of Contents

Terrain Tiles	06
The Interlocks	08
The Squares	09
Terrain Turf	10
Terrain Garden	11
Terrain Duo	12
Terrain Flex Pro	13
Pavers	14
Accessories	16
Colour Charts	17
Critical Fall Height	18
Technical Datasheet	19

1,000,000

Today, we are one of the largest manufacturer of crumb rubber products in the region with an annual output of 1,000,000 square meters of tiles.

Terrain Tiles are widely used for

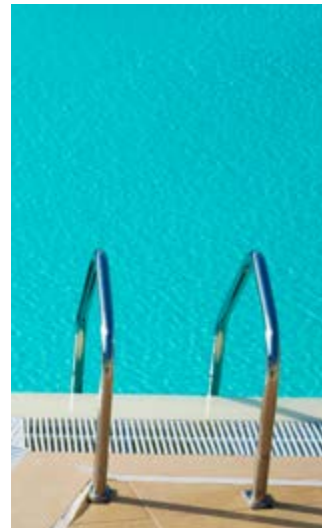
1

Fall protection for children at playgrounds, schools and parks.



2

Slip resistance for wet areas around swimming pools and children's play puddles.



3

An extremely robust flooring solution for equine applications.



4

Gym floorings for weights and cardio area.



5

Sound proofing of rooms for shooting ranges, studios, etc.



THE INTERLOCKS

These are by far the simplest and most easy to use tiles. They can be easily installed, removed and reinstalled at any other location even by an unskilled artisan.

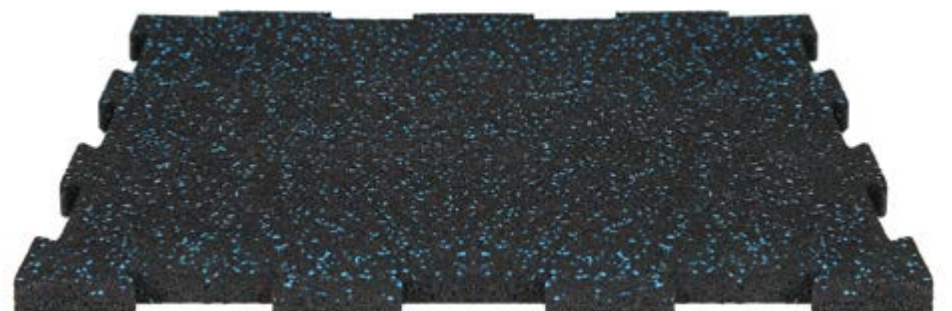
There is a choice to order single or dual colour tiles in all sizes.

Available Dimensions

SIZE (CM)
50x50
THICKNESS (CM)
1.0
1.5
2.0
2.5
3.0



SIZE (CM)
100x100
THICKNESS (CM)
1.5
2.0
2.5



Refer colour chart for various colour options on Page 17

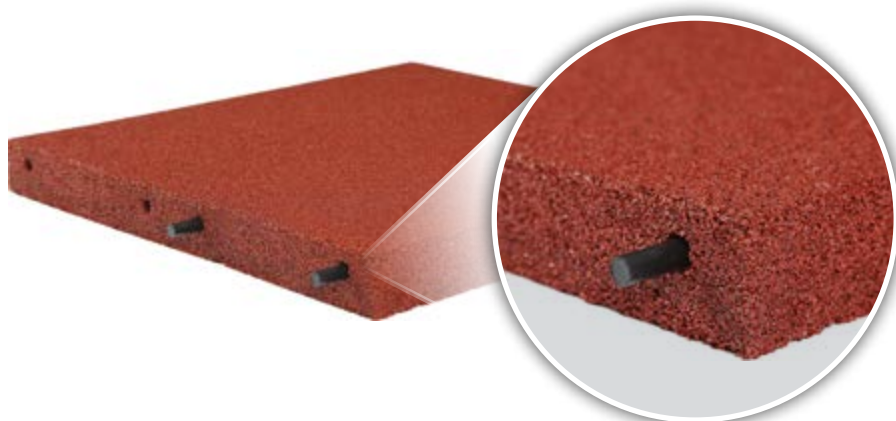
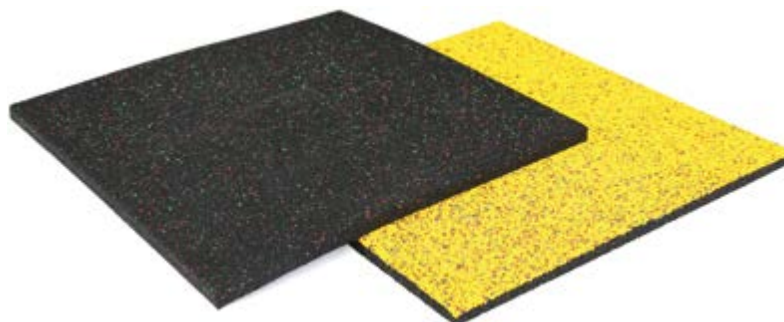
THE SQUARES

These are simple square tiles which can be laid in any pattern you desire. They can be glued to a concrete floor for better adhesion. Tiles above 35mm have plastic pins to keep the tiles in place.

There is a choice to order single or dual colour tiles in all sizes.

Available Dimensions

SIZE (CM)
50x50
THICKNESS (CM)
1.0 without pins
1.5 without pins
2.0 without pins
2.5 without pins
3.0 with pins
4.0 with pins
5.0 with pins



09

SIZE (CM)
100x100
THICKNESS (CM)
1.5
2.0
2.5
3.0



Refer colour chart for various colour options on Page 17

TERRAIN TURF

Wouldn't it be nice if we had a grass flooring which was soft, safe, could be moved around and easy to maintain? Well, we have done just that!

These are easy to install and can be glued onto the floor or fixed with pins between the tiles.

Available Dimensions

SIZE (CM)
50x50
THICKNESS (CM)
2.5
3.0
4.0
5.0



SIZE (CM)
100x100
THICKNESS (CM)
2.0
2.5
3.0



TERRAIN GARDEN

Looking for a surface with a design? Our Terrain Garden tiles are perfect for your gardens, roof tops, walkways and small outdoor areas.

The designs we offer:

- ▶ Brick Pattern
- ▶ Icicle
- ▶ Cobble Stone

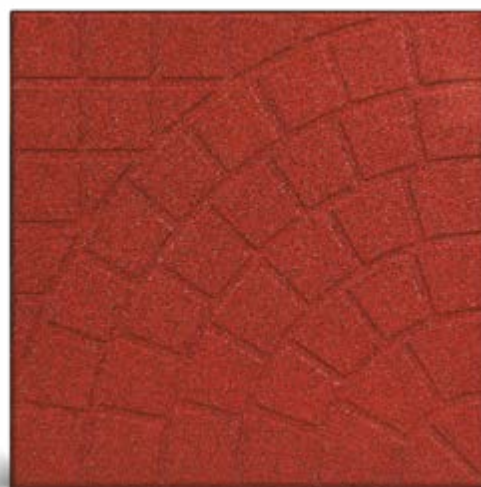
Available Dimensions

SIZE (CM)
50x50
THICKNESS (CM)
2.0
2.5
3.0

Brick Pattern



Icicle



Cobble Stone



TERRAIN DUO

For surfaces where one requires a smoother finish for the perfect gym or the kindergarten floor, we offer Terrain Duo, an amalgamation of tile and mat which gives you the advantage of a great looking product with better cushioning at an economic price.

Available Dimensions

SIZE (CM)

50x50

THICKNESS (CM)

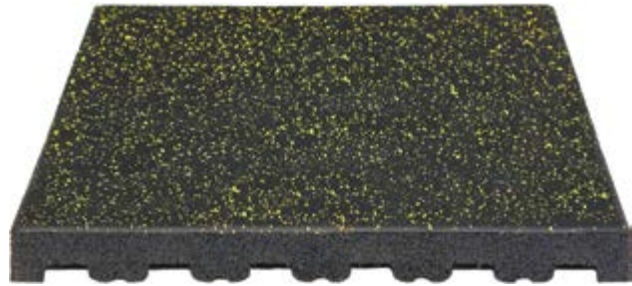
2.0 without pins

2.5 without pins

3.0 with pins

4.0 with pins

5.0 with pins



SIZE (CM)

100x100

THICKNESS (CM)

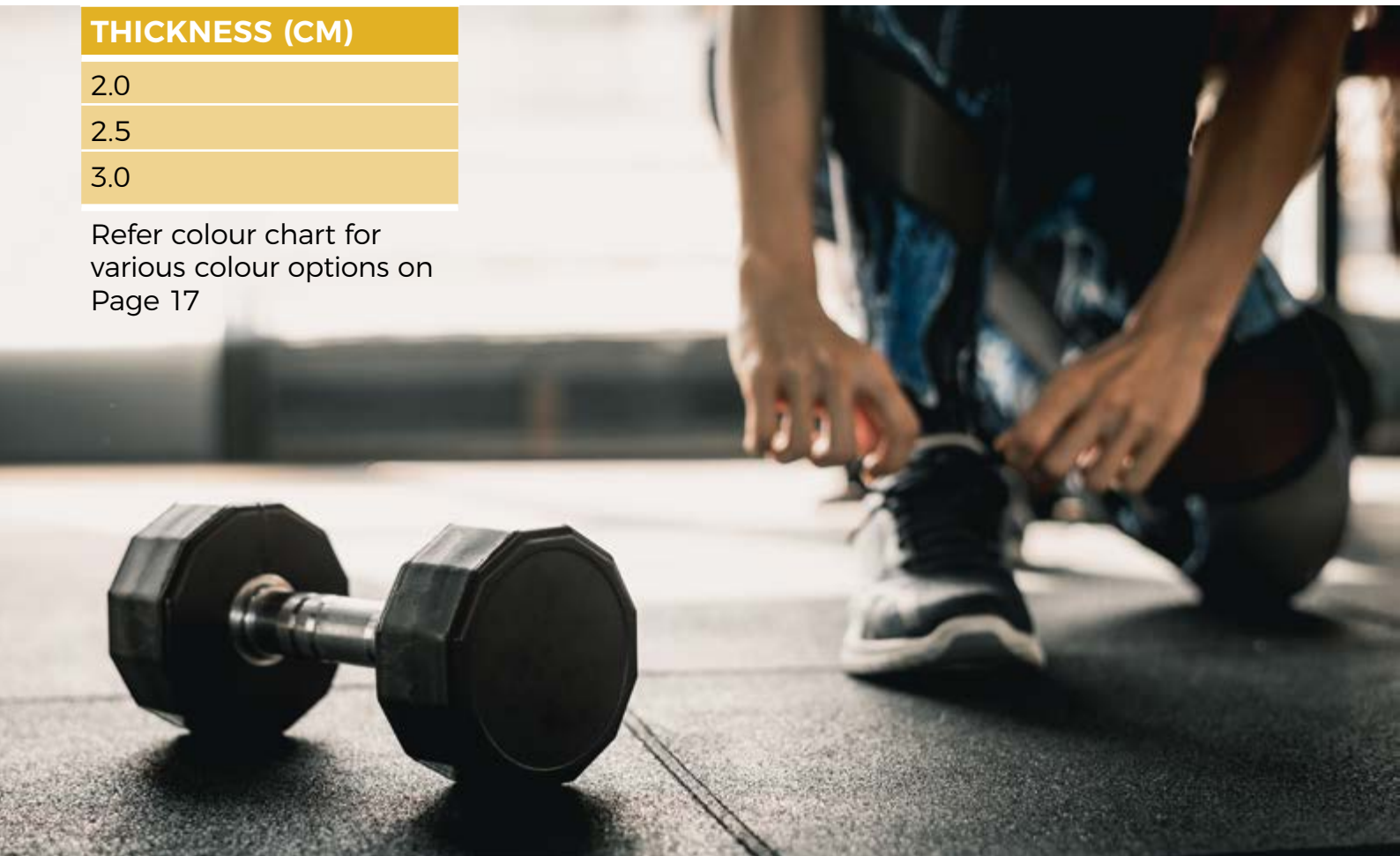
2.0

2.5

3.0



Refer colour chart for various colour options on Page 17



TERRAIN FLEX PRO

For better cushioning and impact resistance, we have our specially developed range of tiles which are softer on the knees and reduce impact on children if they are to fall.



Available Dimensions

SIZE (CM)

50x50

THICKNESS (CM)

4.5

5.0



PAVERS

We offer a wide range of pavers for your gardens, walkways and equine floorings. These are more dense than regular tiles and are also smaller in size, hence easy to carry and lay.

The designs we offer:

- ▶ Dogbone
- ▶ Hexagon
- ▶ Z Shape

Dogbone

Available Dimensions

SIZE (CM)

16X20

35 Pcs per Square Meter

THICKNESS (CM)

2.5

3.0

4.0

4.5

5.0

6.0



SIZE (CM)

100x100

THICKNESS (CM)

2.0

2.5

3.0

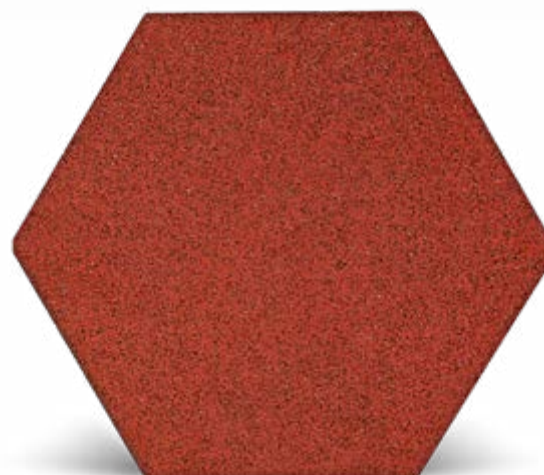


Refer colour chart for various colour options on Page 17

Hexagon

Available Dimensions

SIZE (CM)
23x23 22 Pcs Square Meter
THICKNESS (CM)
2.5
3.0
4.0
4.5
5.0



Z Shape

Available Dimensions

SIZE (CM)
22x22 22 Pcs Square Meter
THICKNESS (CM)
2.5
3.0
3.5
4.0
4.5
5.0



ACCESSORIES



Curb Stone

Available
Dimensions

SIZE (CM)

15x10x50



Tile edges

Available
Dimensions

SIZE (CM)

100

THICKNESS (CM)

2.0

2.5

3.0

4.0

4.5

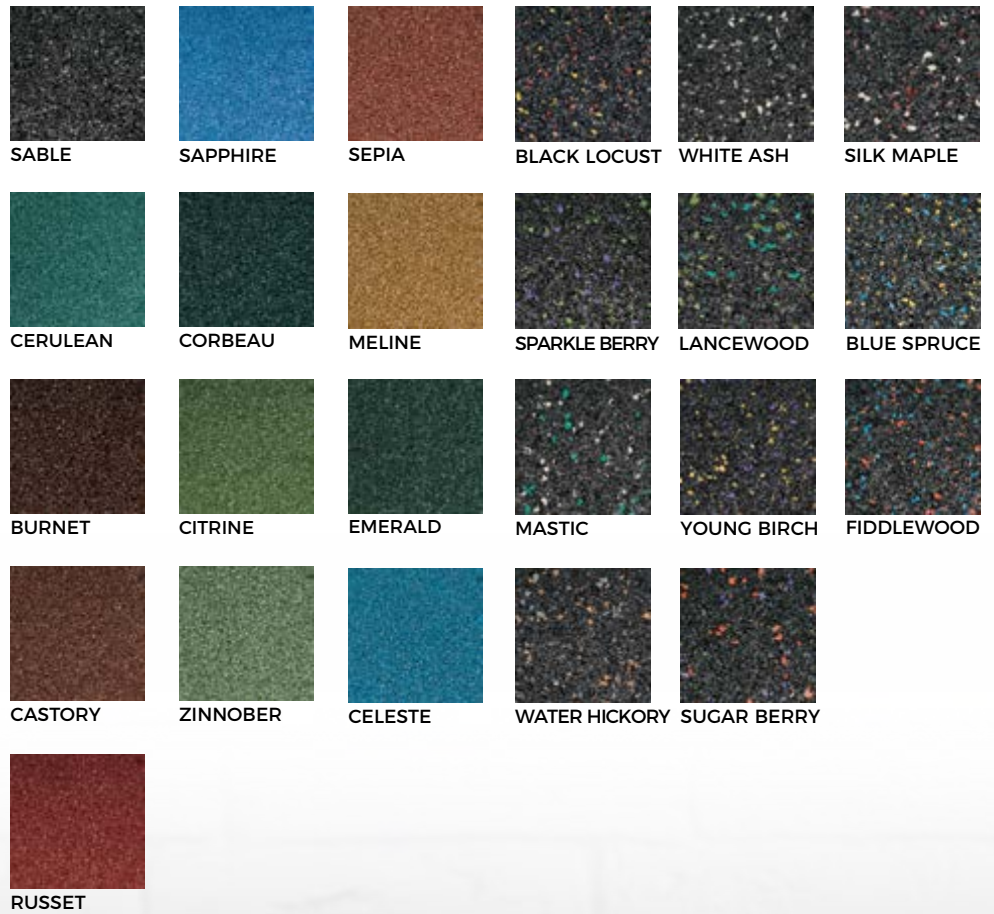
5.0



COLOUR CHARTS

Spotless tiles in solid colors

What you see here is the mainstay of our palette. The variety of shades available give you the flexibility to suit your specific flooring requirements. These tiles are manufactured from high quality SBR tyre crumbs and the rubber is coated with high quality inorganic color pigment in specially designed formulations which gives them their characteristic vibrant look. For special applications, they can also have top layers of pure colored EPDM granules.



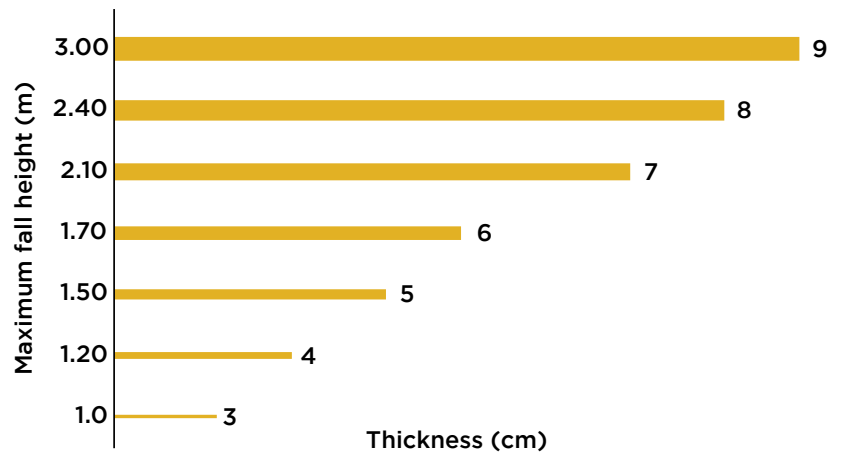
*These colors are subject to a small amount of color variation. Thus, it is recommended to use multicolor options.



CRITICAL FALL HEIGHT

Safety is paramount on surfaces little children tread. For other uses too, these tiles ensure comfort under the feet. Let's look at some important reasons they make perfect solutions for playgrounds, childcare facilities and many other venues.

- ▶ They are versatile, durable and slip-resistant.
- ▶ Playground mats and tiles significantly reduce the risk of injuries.
- ▶ Easy installation allows for a simple 'Do It Yourself' option.
- ▶ They provide excellent drainage and easy cleaning.
- ▶ These tiles don't splinter so cannot be swallowed by children.



TECHNICAL DATASHEET

TEST	TEST METHOD	UNITS	RESULTS
Dimensional Stability	AS 2498.6	+/- 1mm (in the range 23°C to 70°C)	<1.0mm
Duro - Shore Hardness	AS 1683.15.2	Shore A	60-70
Density	ISO 845 Method A	Kg /m ³	950-1020
Colour Fastness (Uv Resistant)	SAE J2020-QUV Accelerated Weathering	No chalkiness or colour change after 500 hours on accelerated UV test	No colour change after 500 hours
Shear Strength	ISO 1827	MPa	2.56
Compression Strength at 20%	ASTM D575	MPa	1.20
Compression Young's Modulus	ASTM D575	MPa	0.26
Tensile Strength (Resistance To Breaking)	ISO 39-2005	MPa	3.03
Elongation At Tear	AS 1683.12	%	50
Heat Conductivity	ASTM C518	W / mK	0.1906
Heat Resistance / Thermal Resistance K Factor Conditions (Normal Temperature 25°C)	ASTM C518 Thickness 24.45mm	m ² K / W	0.1283

This test report applies only to the sample tested. Unless otherwise stated, the sample and description are provided by the client.




Founder's message

At TERRAIN, we believe in doing business in the most honest and ethical way. Our commitment to excellence starts from the ground up. We secure the highest quality raw materials and ensure state-of-the-art manufacturing practices, to deliver cutting-edge products in a timely manner at the most competitive price.

Ali Hussain Yakub

Founder,
ISMAT group of companies

terrain 
PLAY THE SPORT. LEAVE THE SURFACE TO US!

 +971 4 263 2332

 Al Qusais Industrial Third
Dubai, UAE

 sales@terrainfloorings.com

 www.terrainfloorings.com

