

RAWAT AL TASMEEM GNERAL MAINT. CONT. L.L.C.



Company Profile

Specialized in Supply & Fixing of Roof Clay Tiles and Steel Structure.



P.O.Box: 15560, AJMAN-UAE.

E-MAIL: RTGMCLLC@GMAIL.COM

PHONE: 06 7450070, FAX: 06 7450070

Introduction

About Us...

Rawat Al Tasmeem General Maint. Cont L.L.C is a Ajman based company in U.A.E. The company started its operation in U.A.E, since 2007 and undertaking Subcontract works all over UAE.

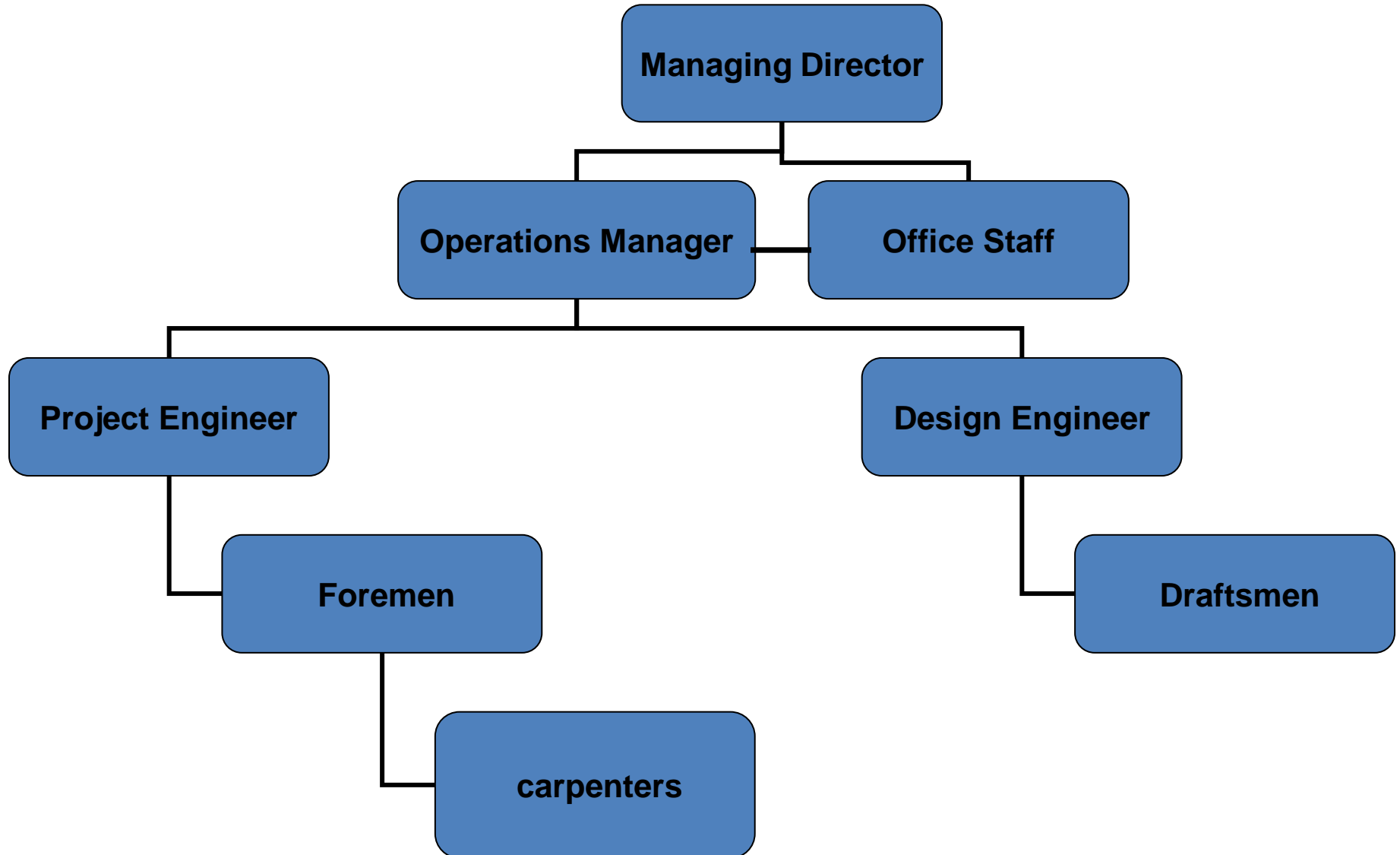
This division is specialized in supply and fixing of Roof clay tiles , Gypsum False ceiling & partitions, and interior fit out works. Our organization consists of group of experts having the know how, man and machineries to complete the works mentioned. We involve ourselves from the design stage to ease the procedure for our clients. The works are executed as per the schedule of our clients.

Main Advantages

- Work independently.
- Co-ordination with the client site team for implementation.
- Full knowledge of drawings and suggest solution for any issues or problems.
- Co-ordination with the project consultant for approval and rectifications if any.
- Time conscious for the client's handover timetable.

ORGANIZATION CHART

Organization Chart



QHSE POLICY

Rawat Al Tasmeem General Maint. Cont L.L.C **Quality, Health, Safety & Environment Policy** **(QHSE Statement)**

Rawat Al Tasmeem General Maint. Cont L.L.C committed to achieve and maintain excellence in Quality, Health, Safety and Environment. We are committed to conduct our business in a manner that protects the safety and health of our employees, our contractors, customers and the communities.

Our Quality policies and procedures are part of the organizational culture which has enabled us to deliver every single project not only with high quality and precision but operationally safe also. We give utmost important to human health, occupational safety, environmental protection, quality enhancement and community goodwill.

We believe in the policy of continuous improvement.

In all activities Rawat Al Tasmeem General Maint. Cont L.L.C aspires to:

- Compliance with applicable laws and regulations in occupational health, safety and environment.
- Compliance with Company policies, quality procedures and standards
- Conformance to agreed Customer requirements and ensure continuous customer satisfaction.
- Maintain a professional and productive work environment that promotes effectiveness and enhances creativity
- Maintain an open line of communications with clients to facilitate project execution and incorporate all concerns
- Produce a technically superior, timely, and cost effective product which adheres to superior environmental, social principles and exceed client expectations

QHSE POLICY

- Promote and maintain a work environment where each of us accepts personal responsibility for our own safety and in which everyone is empowered to intervene in ensuring the safety of their fellow employees and others.
- Prevent pollution to land, air and water.
- Identify and manage environmental risks and hazards.
- Provide suitable training to enable employees to deal with their specific areas of QHSE control.

All employees are responsible for working towards the objectives contained within this policy. The Policy shall be periodically reviewed for continuing suitability.

Some of our Project Photos



Jumeira Golf Estate -(Roof Clay Tiles)







Sadiyaat Beach Villas
(Roof Clay Tiles)





(Roof Clay Tiles)



Steel Structure Work to For Roof Clay Tiles





