

COMPANY PROFILE



RED MAGMA
GENERAL TRADING LLC

think. *choose.* floor it.

ABOUT US

On behalf of the management of Red Magma General Trading L.L.C an establishment in UAE, we would like to introduce ourselves as a specialist in providing total flooring solutions. Our commercial designs are near to perfection, we thrust ourselves to provide both aestheticism as well as quality in executing the installation. We are tightly knitted with Carpet tiles, Hand Tufted Carpets, Axminster Carpets, Raised Access Flooring, Sports Flooring, Luxury Vinyl Floorings and the list goes on.

Our mission is to deliver products and services of highest quality and efficiency and provide personalized services according to customer needs with utmost satisfaction. We also express our heartfelt gratitude to our customers and promise to deliver top notch solutions for all customer needs.

Our vision is to be a paradigm in the flooring business on a global level. To be a company that coincides with flooring solutions in the UAE, by holding up the right values and a powerful team that enables us to deliver services and products of the highest quality.

CARPET TILES

Carpet tiles, also known as carpet squares or modular carpet, are a modern and stylish alternative to carpet rolls. Though they're much easier to install and offers endless design possibilities with minimum maintenance, Often used in commercial settings, such as in Offices, schools and airports, they are becoming more and more popular in residential spaces.

Carpet tiles are not only easy to install, but also easy to remove. Should wear and damage occur, carpet tiles can readily be replaced individually rather than replacing an entire floor.



RAISED ACCESS FLOOR

A raised floor provides an elevated structural floor above a solid substrate to create a hidden void for the passage of mechanical and electrical services.

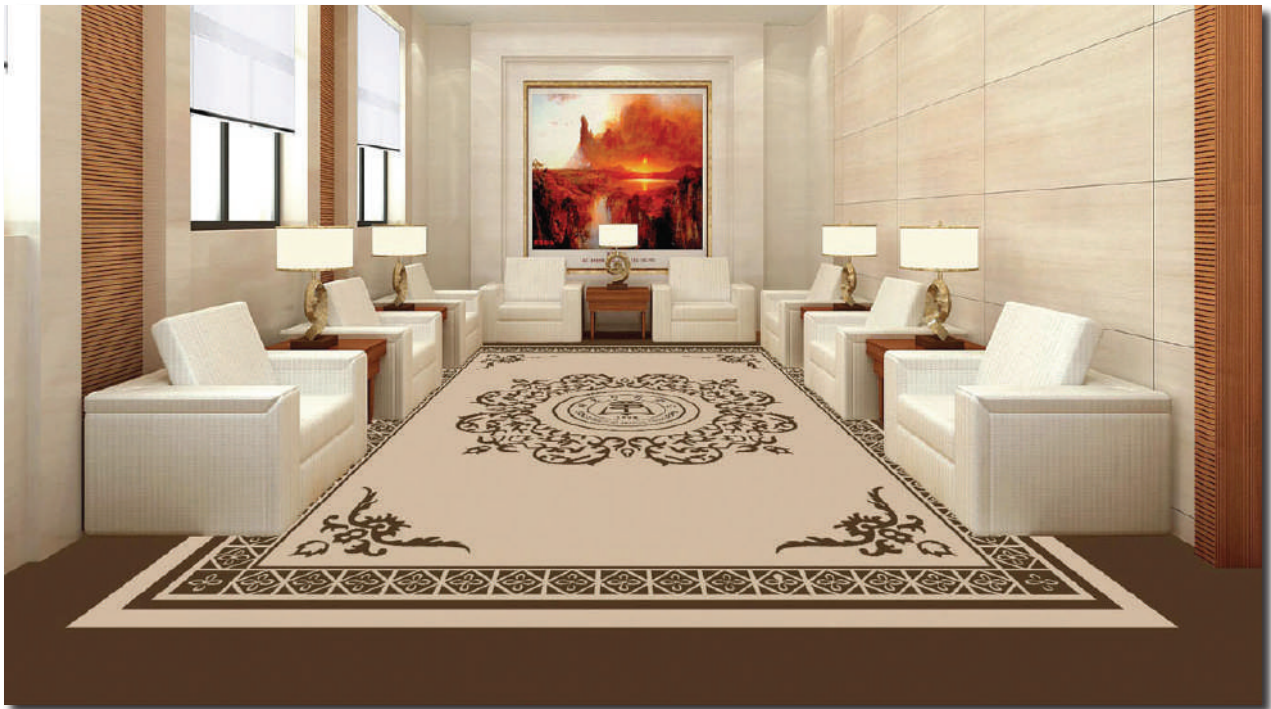
Raised floors are widely used in modern office buildings, and in specialized areas such as command centers, IT data centers and computer rooms, where there is a requirement to route mechanical services and cables, wiring, and electrical supply. Such flooring can be installed at varying heights from 2 inches (51 mm) to heights above 4 feet (1,200 mm) to suit services that may be accommodated beneath.



HAND TUFTED CARPET

Hand-tufted rugs are among the most luxurious, creative and artistic in the world of rug production. Several factors contribute to their lavishness, including yarn content, fine detailing and finishing techniques. Material yarn content that we use is primarily high quality 100% wool, most being manufactured with 100% New Zealand wool yarn.

There is no limitation to shapes and sizes you can choose for your tufted rug; if you can dream it, we can create it!



AXMINSTER CARPET

Axminster Carpets, made of 80% Wool and 20% Nylon, feature full and elegant surface and strong woven construction. With patterns up to 12 colors, they are seamlessly matched without distortion to the patterns. Axminster carpets are the best selection for public areas including restaurants, gaming rooms, corridors, ballrooms, hotels, cafes, and conference rooms.



SPORTS FLOORING

Sports Flooring used in universities, schools, religious centers, fitness clubs, recreational facilities and international competitions.



LUXURY VINYL

LVT or Luxury Vinyl Tile is an innovative design of vinyl flooring. It is becoming an increasingly popular and affordable alternative to wood or stone. The realistic look of either wood, stone or ceramic tile is extremely hard wearing and resilient to daily wear and tear. It has a scratch resistant surface and waterproof making it ideal for any room in your home. The LVT is made up of multiple thin layers so that the flooring is still flexible but very durable and easy to look after.

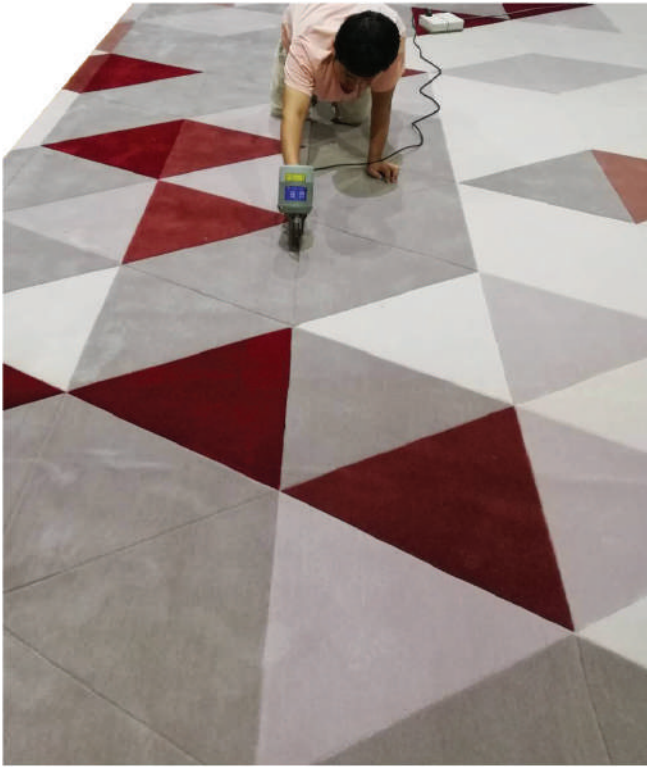


SPC FLOORING

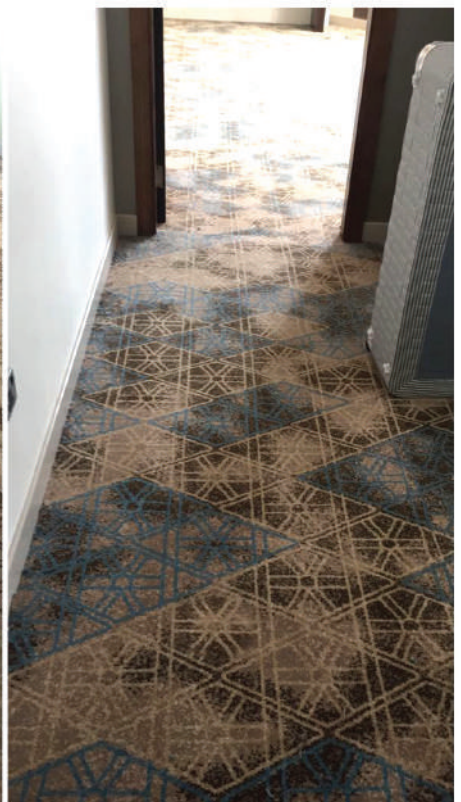
SPC Vinyl Flooring stands for stone plastic composite vinyl flooring. Similar to WPC vinyl, an SPC vinyl is an engineered luxury vinyl that combines limestone and stabilizers to create an extremely durable core. An SPC vinyl floor is still 100% waterproof, but adds stability, dent resistance and structure to vinyl plank flooring.



MAJOR PROJECTS



Hand Tufted Carpets

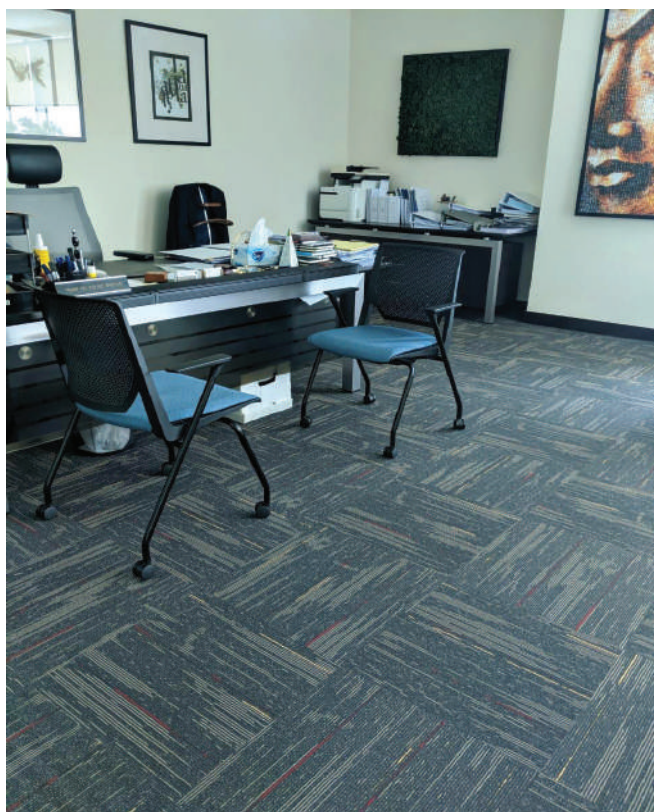
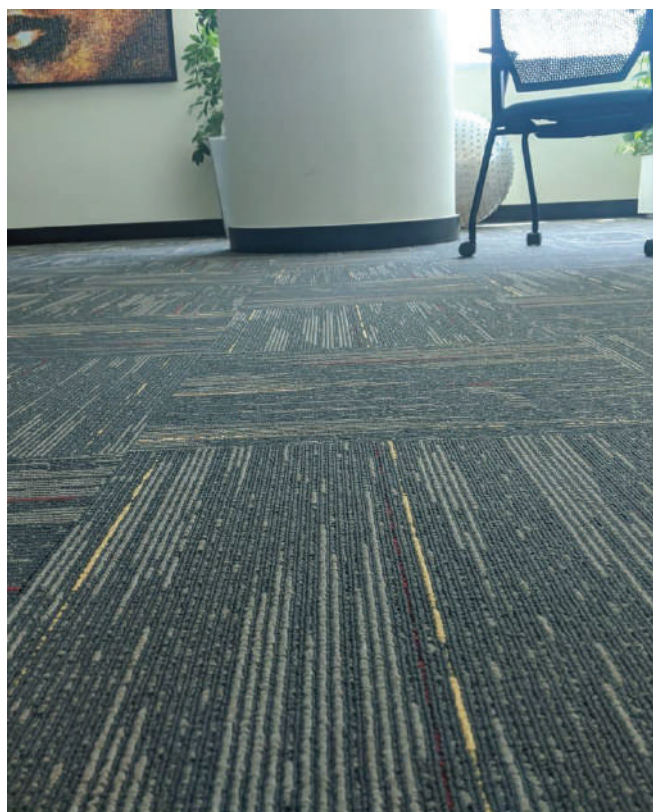


Axminster Carpet

MAJOR PROJECTS



Sports Flooring



Carpet Tile

MAJOR PROJECTS



Carpet Tile



Raised Floor

CONTACT US

Address:

Warehouse No: 11 B1
Khansaheb Warehouse
Al Qusais Industrial Area 1
P.O. Box: 19243
Dubai - United Arab Emirates.

+971 4 258 1388

marketing@redmagmauae.com

www.redmagmauae.com

Follow us on...



<https://goo.gl/maps/QgaroakNPDKZaHuMA>

