

SINCE 1999

مصنع الواحة لمنتجات الفايبر جلاس ش.ذ.م.م.

OASIS FIBRE GLASS FACTORY L.L.C

Our Sister Concer

WAHAT ALNARJIS FIBRE GLASS PRODUCTS TRADING

+971 6 764 6702

+971 50 529 1824

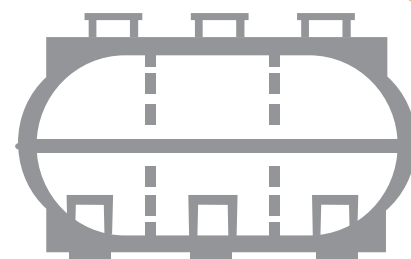
+971 50 700 2867

7169, Dubai-U.A.E.

@afeefoasis@gmail.com

oasis1999824@gmail.com

.... Our Motto Your Satisfaction....



SINCE 1999

مصنع الواحة لمنتجات الفايبر جلاس ش.ذ.م.م.

OASIS FIBRE GLASS FACTORY L.L.C

+971 6 764 6702

+971 50 529 1824

+971 50 700 2867

7169, Umm Al Quwain-U.A.E.

@afeefoasis@gmail.com

oasis1999824@gmail.com

.... Our Motto Your Satisfaction....

Oasis Fibre Glass Factory L.L.C



Oasis Fibre Glass Factory L.L.C is one of the leading manufacturers of GRP (Glass Reinforced plastic) and GRC (Glass Reinforced Cement) products and a trend setter in the gulf region. From the commencement of its venture, fiber glass Industries has kept its highest priority to provide high quality product to its customers. Quality is our main Objective for all Productive at trade & consumers levels.

Oasis Fibre Glass Factory L.L.C Is considered as an innovative company for the last 30 years always striving to conceive and produce fibreglass products which match the functional and aesthetic aspirations of the user with well-performing factories and substained investment, Oasis Fibre Glass Factory L.L.C is constantly fighting to improve quality and design at every step of the manufacturing process to comply with the gulf & international standard and to ensure its high performance, Oasis Fibre Glass Factory L.L.C through testing adequately continuously its line of products, is achieving the best quality and durability

The purpose of Oasis Fibre Glass Factory L.L.C is to create value for client companies through the provision of Exceptional requirement support and provide cost effective fibre products.

We provides structured and independent thinking to complement a consultant or contractors' initiatives, challenging dreams to consider the wider strategic perspectives of their decisions when considering the perfection of our products within their company. Strategic leadership and competitive advantage will always stem from the ability of a company to identify and attract the most outstanding market players into our company.

ADVANTAGES OF OUR PRODUCTS

- 1-DOES NOT RUST
- 2-MADE OF HARD PLASTIC (DOES NOT BREAK)
- 3-NEEDS NO SPRAY OR PAINT
- 4-UNHABITABLE BY MOSS (INTERNATIONAL/EXTERNALLY)
- 5-SUITABLE FOR STORING DRINKING WATER
- 6-CAPABLE OF STORING OIL.
- 7-RELIABLE FOR STORING CHEMICAL PRODUCTS (SOLID/LIQUID)
- 8 HUMIDITY RESISTANT
- 9 VERY COMPETITIVE PRICES

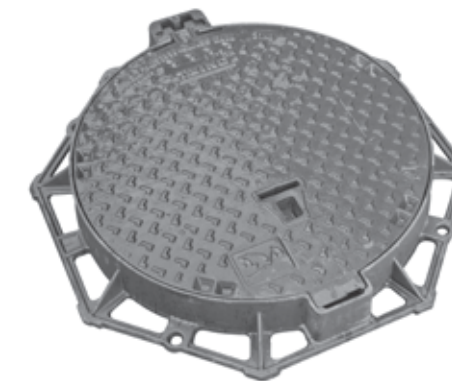
Fire Hose Reel Boxes



Roof Tiles



Manhole Cover



Insulated Doors

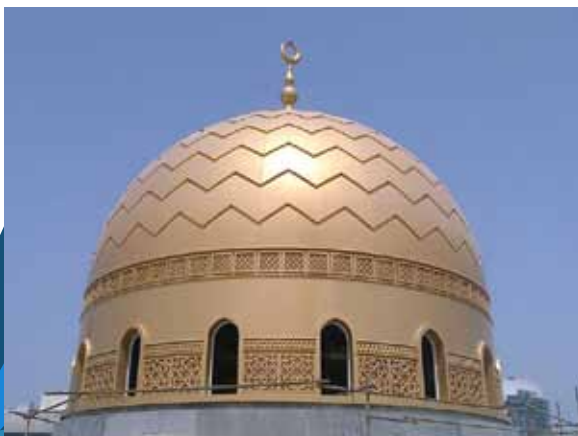


Kiosks





DOME



GRP (Glass Reinforced Plastic)

Our product range includes sliders and swings, Toilet Cubicle, shower cubicle, car parking sheds, water tanks, chemical tanks, cladding panels, decorative tiles, screening tiles and screens, Precasting Moulds for column and walls, bath tubs, shower trays, waffle Moulds, A/C Trays, Gully pot and buckets, GRP Lining to underground RCC Water Tanks, sewage Manholes, Custom Moulding etc. Steam room ceiling, Fish Tank, Steam room ladder, Etc.

GRC (Glass Reinforced Cement)

Our GRC product range includes screen, panels, window Frames, skin panel Domes, claddings, Decorative Columns, sign Boards, parapets, outdoor cabins, custom Designed products etc.

Oasis Fiber Glass Factory L.L.C OFFERS A WIDE RANGE OF GRP PRODUCTS ALMOST ALL YOUR NEEDS

1. Panel Tanks

- Cold press
- hot press

2. Cylindrical Tank

- Water storage tanks
- Plastic tank
- Septic tank & soak away
- Oil storage tank
- Chemical storage tank

3. lamination / lining

- Under Ground RCC Water storage Tank
- Swimming pool
- Pipe lines
- Drainage manholes
- Mild steel Tanks

4. Car parking sheds

- Islamic
- Arch Type
- C Type
- Wave Type

5. Bathroom Items

- Bath tubs
- Shower trays



6. Fish Tank
7. Corrugated roofing sheets
8. Canopies
9. Steam room ceiling
10. Decorative domes & motifs
11. Manhole, Grease trap & covers
12. Gulley pots
13. Chequered Plate
14. Decorative wall cladding (Architectural)
15. Insulated doors
16. Battery, Electrical & first Aid Boxes
17. Steam room
18. Flower pots
19. Fire Hose Reel Boxes
20. Enclosure for Electrical panels
21. Kiosks
22. Caravans
23. Roof Tiles (Decorative)
24. Air condition drainage
25. Pick – up Cabins
26. Gratings
27. Pinnacle

GRP PANEL TANK

We are one of the leading GRP tank manufacturer. These types of tanks are available in various capacities. Panel tanks are engineered for high performance and tested to the highest requirements of BS and ASTM standards. High quality raw materials are used under strict quality control during all manufacturing process.

Features

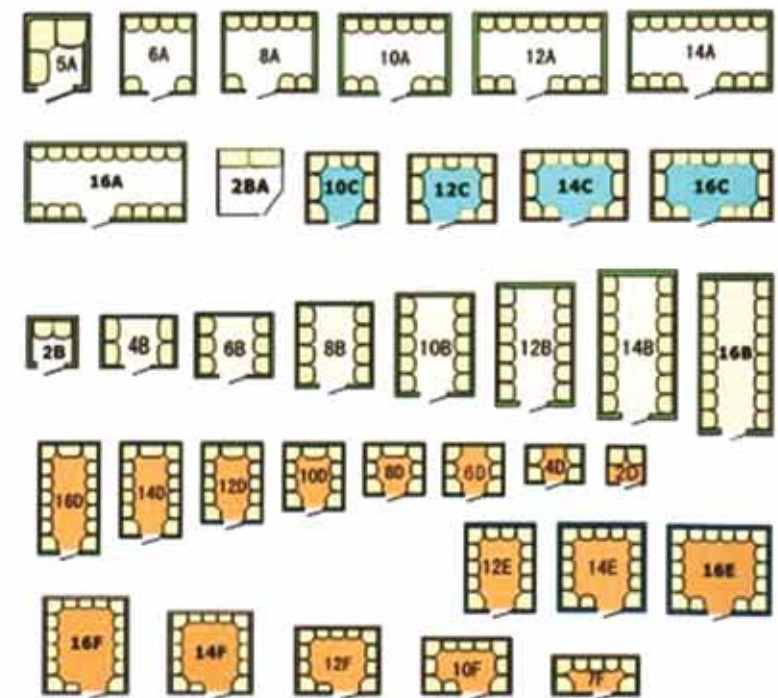
- In compliance with international standards
- Hygienic for storage of drinking water
- Ultra violet protection against algae growth
- High flexural & tensile strength
- Engineered for reliable performance
- High rigidity
- High corrosion resistance
- Long life
- Maintenance free
- Light weight
- Easy to assemble
- High temperature curing (150 °C)
- High moulding pressure (70 bars)

CYLINDRICAL GRP TANKS

Oasis Fibre Glass Factory L.L.C is a leading manufacturer of horizontal & vertical cylindrical tanks. Tanks are available in various capacities to meet the requirement of our valued customers. These tanks are mainly used for storage of drinking water, chemical and oils.

Steem Room Details

DS-5A	1500x1500x2250	3	4-6
DS-6A	2500x1900x2250	6	10
DS-8A	3100x1900x2250	8	12
DS-10A	3700x1900x2250	10	12
DS-12A	4300x1900x2250	12	15
DS-14A	4900x1900x24500	14	18
DS-16A	5500x1900x2250	16	18
DS-4B	1900x1300x2250	4	6
DS-8B	1900x1900x2250	6	8
DS-8B	1900x1900x2250	8	10
DS-10B	1900x3100x2250	10	12
DS-12B	1900x3700x2250	12	12
DS-14B	1900x4300x2250	14	15
DS-16B	1900x4900x2250	16	18
DS-10C	4540x2120x2100	10	10
DS-12C	3140x2120x2200	12	12
DS-14C	3740x2120x2100	12	12
DS-16C	4340x2120x2200	12	12
DS-2D	1180x1160x2200 1340x1270x2200	2	4
DS-4D	2120x1340x2100	4	6
DS-6D	2120x1940x2100	6	8
DS-8D	2120x1940x2100	6	8
DS-10D	2120x2450x2100	10	8
DS-12D	2120x3140x2100	10	8
DS-14D	2120x3740x2100	14	15
DS-16D	2120x4340x2100	16	18
DS-7F	3140x1940x2250	7	10
DS-10F	3140x1940x0050	10	12
DS-12F	3140x2540x2250	12	12
DS-14F	3140x3140x2250	14	15
DS-16F	3140x3740x2250	16	18
DS-12E	2540x3140x2250	12	12
DS-14E	3140x3140x2250	14	15
DS-16E	3740x3140x2250	16	18
	1300x1150x2100		
2B	1120x1150x2050 1200x100x2150 1100x1260x2050	2	4





Fish Tank



Features

- High ratio of mechanical strength to weight
- Chemical resistance & corrosion free
- Low electrical & thermal conductivity
- Protection from bacteria, Algae or fungus
- Non – toxic approved for drinking water storage

PLASTIC TANK

Features

- Strong body
- Free from corrosion
- Guaranteed for long life
- Stress resistant
- Easy Handling
- Suitable for underground application
- Smooth layer inside resists fungus formation and bacterial growth
- One piece molded tanks

Capacities from 100 us gallons to 5000 us Gallons Vertical and Horizontal types are available.

GRP LINING/ LAMINATION

Fibre Glass lining / lamination is being recommended for RCC tanks, Swimming pool, Drainage Manholes, pipelines and mild steel tanks. Oasis Fibre Glass Factory L.L.C provides GRP lining of superior and long terms performance with low cost. High quality materials used are durable and resistant to adverse environment weather conditions. The GRP Lining helps to resist the formation of moulds, bacteria, algae and fungi. The recommended minimum thickness is 3mm & can be increased as per the requirement.

Method statement

- Clean the surfaces thoroughly
- Apply one layer of clear resin
- Apply one layer of 300 chopped strand mat with GRP resin
- Apply one layer of 450 chopped strand mat with GRP resin & antialgae treatment
- Apply final coat of white top paraffin with antifungus treatment.

Technical Data of GRP Lining

Material = Glass Reinforced Lining

Process = Manual

Tensile strength = 93 N/ mm²

Flexural strength = 141 N / mm²

Thermal conductivity- 0.15-0.17 w/ (mk)

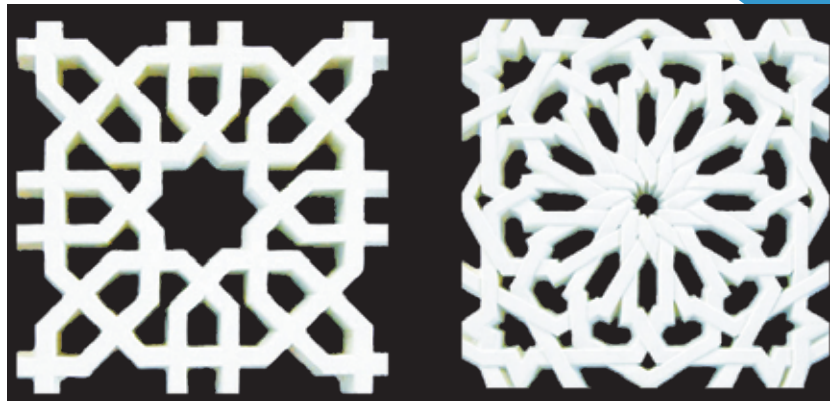
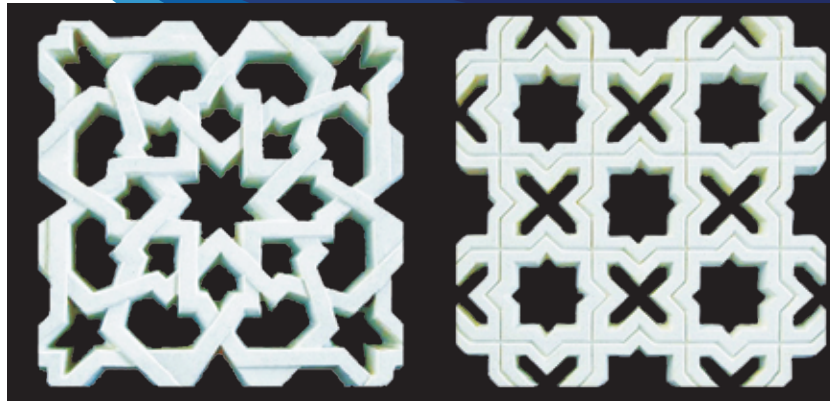
Water absorption – below 2%

....WE UNDERTAKE REPAIRING OF GRP PRODUCTS....

GRP Lining



GRC Screen



ONIS FIBRE GLASS FACTORY L.L.C
GRC Column



GRC Panels



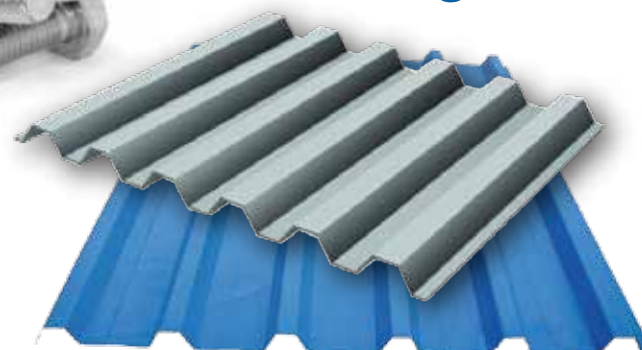
Rubber Seal



Fastner S.S



Corrugated Sheet



Car Parking Shed



GRP Flower Pot



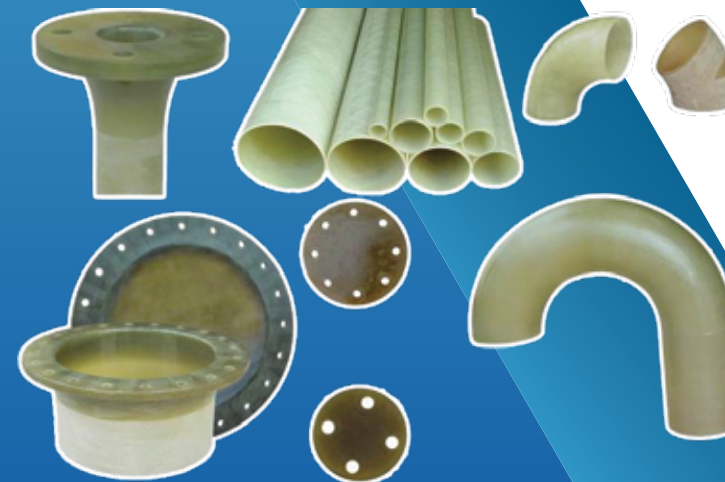
GRP AC Tray



G.R.P Manhole Liner



GRP Pipe Fittings



GRP Shower Tray



GRP Cylindrical Tanks



GRP Fuel Tank



Chemical Tank GRP



GRP Ladder



OASIS FIBRE GLASS FACTORY L.L.C
Plastic Tank



GRP Kerb Stone Mould



GRP Canopy



GRP Waste Bin



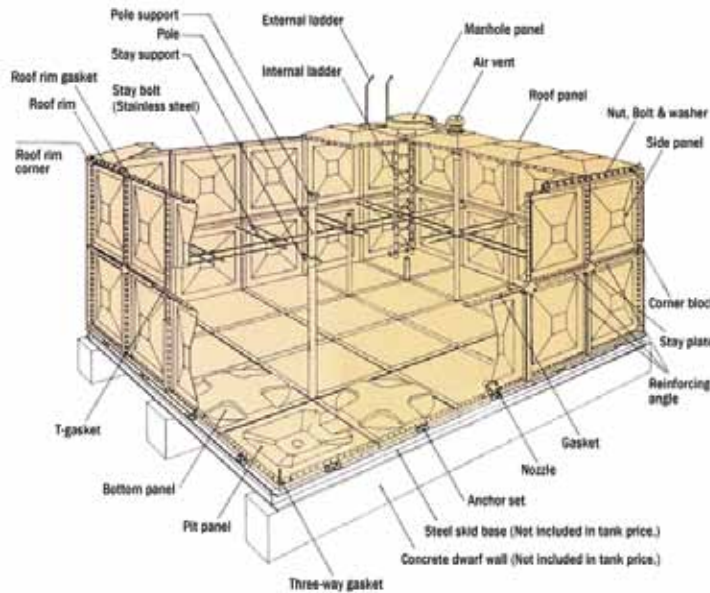
GRP Column Mould



GRP Gladding



GRP Panel Tank



GRP Bath Hub



Electrical Encloser

