



AOYAMA ELEVATOR GLOBAL LTD.

CONTACT INFORMATION

Japan Headquarters Address:

2-2-15 Minami-aoyama, Minato-ku, Tokyo, Japan.

Japan Factory Address:

No. 17, Osukannon, Nagoya Southwest District, Aichi Prefecture, Japan.

Tel: +81 52 4564462

Global Bussiness Center Address:

UNIT 04,7/F BRIGHT WAY TOWER,NO.33 MONG KOK RD KL, HongKong.

Email: info@aoyama-elevator.jp

Web: www.aoyama-elevator.jp

The printed products are for reference only. The Company reserves the right to change product design and specifications. The printed matter contained information on the suitability of the products are extremely special purpose, merchantability, quality or any procurement terms of the agreement is not long enough to guarantee or commitment of any kind, express or implied.

印刷された製品の基準のためです。同社製品の設計を変更するには、右と仕様を保有します。印刷物の製品の適合性についての情報が含まれている非常に特別な目的で、市場性、品質または契約のいずれかの入手を保証またはいかなる種類の関与を十分に長く、明示的または黙示的。

AOYAMA

AOYAMA ELEVATOR GLOBAL LTD.
ELEVATOR

The Best elevator from Japan
日本のベストのエレベーター

Designed to
EUROPEAN STANDARDS





Excellent quality Serve the world
優れた品質世界のサーブ
Intelligent transportation Solutions expert
インテリジェントな交通案
専門家を解決する

Catalog カタログ

03 | 04
Enterprise introduction
企業紹介

05
AOYAMA ELEVATOR policy
青山のエレベーターの政策

06
Core Technology
コア技術

07 | 10
Small machine room passenger elevator
小型機の乗客エレベーター

11 | 14
Escalator & Moving walk Configuration
無機房の乗客エレベーター

15 | 24
Customized Design
カスタマイズされたデザイン

25 | 30
Villa Elevator
別荘エレベーター

31 | 32
Panoramic elevator
観光エレベーター

33 | 34
Bed Elevator
病床のエレベーター

35 | 37
Freight elevator
貨物輸送エレベーター

38
Dumbwaiter Elevator
雑物エレベーター

39 | 40
Car Elevator
自動車エレベーター

41 | 44
Elevator Function
エレベーター機能

45 | 46
Escalator
エスカレーター

47 | 48
Moving walk
自動歩道

49 | 51
Escalator & Moving walk Configuration
エスカレーターと自動歩道の配置

52 | 54
Layout specifications and dimensions
レイアウト仕様とサイズ

55 | 56
Modernization Packages
近代化のパッケージ

57 | 60
Reference Projects
工事の事例

硫酸紙正面

歴史 History

Established in Nagoya since 1966
The most professional elevator supplier in Japan
50 years of elevator design, manufacturing, installation, maintenance experience.
Since now, AOYAMA ELEVATOR is about to serve the people of the whole world.

1966 年以降は名古屋に設立された
日本で最もプロのエレベーター業者
50 年のエレベーターの設計、製造、設置、保守を経験します。
今から、我々のエレベーターは、全世界の人々に貢献するについて



Enterprise introduction 企業紹介

AOYAMA ELEVATOR GLOBAL LTD. is a professional elevator company who designs and manufactures complete elevators, escalators and moving walks, as well as elevator parts. The company covers a land area of over 80,000 square meters with more than 35,000 square meters of factory houses and 15,000 square meters of office area. Currently, more than 300 employees work for AOYAMA ELEVATOR, which includes 82 engineering technicians.

From design to manufacture, from installation to maintenance, AOYAMA ELEVATOR endeavor to satisfy the clients' individual requirements. Our world-wide service networks, well-trained engineering staff provides the customers with perfect services according to fixed work standard wholeheartedly. AOYAMA ELEVATOR have formulated and implemented a set of strict installation management process and operation rules to ensure our customers rest at ease.

青山のエレベーターの世界的な会社との完全なエレベーターメーカーのデザインプロのエレベーター、エスカレーターと動く歩道、エレベーター部品として。会社の工場の家とオフィス面積15000平方メートル3万5000平方メートル以上で8万平方メートル以上の土地の面積をカバーします。現在では、300人以上の従業員を青山エレベーターのために働く、82工学技術者を含みます。設計から製造への導入からメンテナンスまで、クライアントの個々の要件を満たすために青山昇降するよう努めています。我々の世界的なサービス・ネットワークは、よく訓練された技術スタッフの作業標準の固定による心の完全なサービスを顧客に提供します。青山のエレベーターを持って策定・施行されたセットの厳しいインストール管理プロセスと操作性で我々の顧客の残りを確保するためのルール。

Every year is a safe year.
Every day is a comfortable day.
ELEVATORS are made by man.
No matter what you do,
AOYAMA ELEVATOR always sticks to a basic principle:
Security and Comfort.
Now it is, and it will always be, and always will be

毎年、安全な年です。
毎日快適な日です。
エレベーターは人によって作られています。
あなたがたとえ何をして、
私たちは常に基本原則に固執します。
安全と快適さ。
現在では、それが常にそうである、と常に意志があります。



硫酸紙背面



風車

コア技術 Core Technology

AOYAMA ELEVATOR focuses on three Japanese core systems that are essential for the reliable of elevator and escalators: Traction system, control system and door operating system.

Having inherited Japanese advanced manufacturing technology and uniformed devises, together with best skills and rigorous and careful working style, ensures the outstanding quality of our products.

Aoyama elevator policy 青亜エレベーターの政策

未来の安心を創造し、 今日の万一を解決する。

現代の暮らしに欠くことのできないエレベーター。その“安全”を守ることを使命に、エレベーターは日夜活動しています。

ボタンひとつで操縦できるタテの交通機関のエレベーター。それはその裏で、精密かつ複雑な制御が働いていることの証しです。

心に秘めた固い決意。フェアかつ強力な実行力。不測の事態を予測し、突発的なトラブルに迅速に対応する・・・私たちは設立当初の気持ちを忘れることなく、3つのポリシーを心にきざみ、最善を尽くしています。

FAIR
フェア

もっと公正に、
さらに適正に。

COST
コスト

高い品質を、
どこよりも安く。

HEART
ハート

顔の見えるスタッフが
親密に。

To create the future of peace, to solve the case.

ELEVATOR is indispensable to modern life. To protect the "safety" mission, working day and night.

Transport of vertical elevator with one button can control. It is in the precise and complex operation of the control card.

Determination of potential. A strong and fair execution. Prediction of unforeseen circumstances, the sudden trouble to respond quickly and we can forget the feeling of the three policy in every heart, and do my best.



Improve transmission efficiency
25%-35%



Noise reduction
5-10db

Gearless traction machine -YASKAWA

We choose rare earth material and fully combine coaxial transmission technology and digital variable frequency technology with group computer combined control technology. With less running cost & less energy dissipated. Compared with the ordinary and traditional technology, gearless traction machine can save more than 46% of the energy. Gearless traction machine needs no renewal of lubricant. Without grease pollution, low noise, quiet & natural.



低雑音
Low noise



緑色の環境保護
Green environmental
protection



効率的な省エネ
Effective and
energy-saving



安定して信頼できる
Stable and reliable



Japanese Digital Inverter Technology -YASKAWA

Advanced vector conversion technology, according to human body riding comfort, it will take real-time speed adjustment.

Advanced high-speed digital signal processing system can increase the sensitivity of the speed control of the traction machine which will minimize the elevator vibration. The newest low-noise control technology can make the elevator operates quietly and steadily.



Panasonic Variable Frequency

Panasonic variable frequency door machine can freely adjust door opening/closing speed. It is equipped with self-study function. It internally sets the optimized running curve with the convenient adjustment. It owns the excellent closed loop control, instant control to the running speed and position, traditional travel switch software.



Small machine room passenger elevator 小型機の乗客エレベーター

In order to save the building space, extend the larger space utilization rate of the construction, bring about the more sensitive and reliable running, the more graceful and attractive building, Small machine room passenger elevator applies the compact and concentrative permanent magnet synchronous and gearless traction machine and specially-designed control cabinet. There machine room has same area as that of the well.

建物の空間を節約するために、建物の更に大きな空間利用率を開拓して、実行することはより機敏で信頼できるようにして、ビルがより優雅で美しい、小さい機関の乗客のエレベーターを使用して、コンパクトな密度の永磁の同期の無歯車の誘引機と特殊な設計の制御箱を採用して、機械の面積を井道面と完全に同じに達するようにします。



Intelligent Control System

Ensuring the intelligent elevator operation in the guarantee of security, comfortable experience.

High Performance Gearless Traction Machine

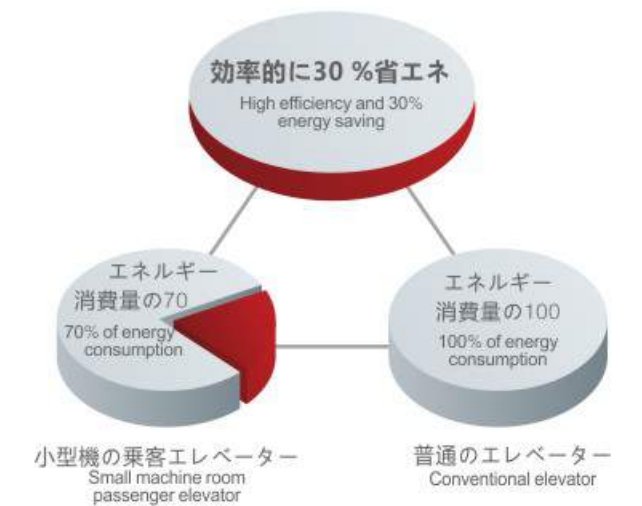
Using non mechanical transmission design of high efficiency permanent magnet synchronous, low noise, vibration small, compact, energy-saving up to 40%.

Door Protection

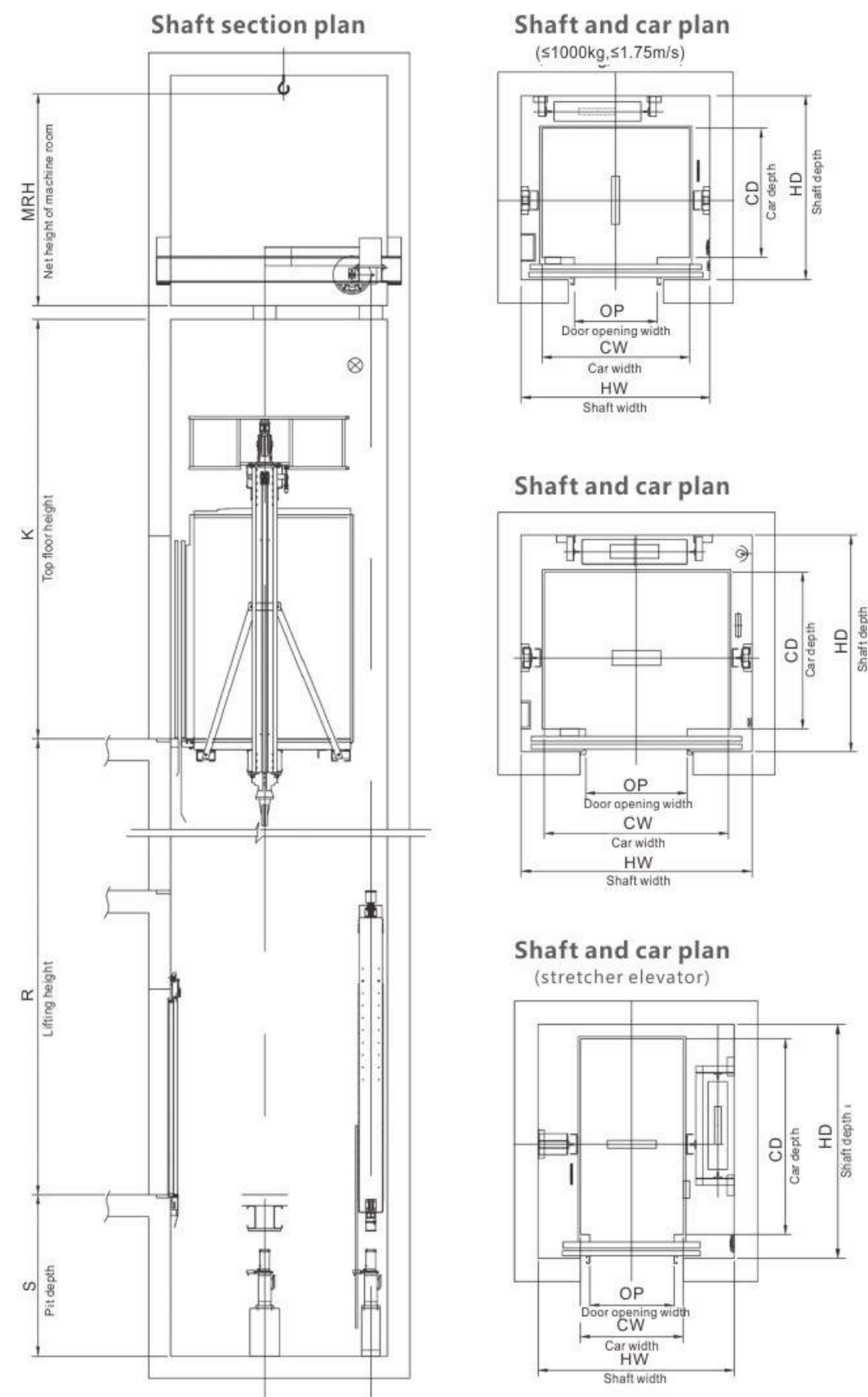
Waterproof grade IP 65 light curtain protection system, more than 154 light beams ensure the safety of passengers.

Comfortable Riding

Frame type car enclosure protection, secures leveling stability, adding more safety. Using inner car height 2.5m, with LED natural lighting, more optional decoration suits for VIP.



Small machine room passenger elevator Layout Shop Drawing



Small machine room passenger elevator Technical Specification

Load (kg)	Speed (m/s)	Max. Travel (m)	Max. Floors	Cabin Size(mm)	OP(mm)	Shaft Size(mm)	Pit	Overhead	Motor Power
				CW*CD*CH	2P CO	HW*HD	S(mm)	K (mm)	KW
450	1.0	60	20	1200*1100*2500	700*2100	1700*1750	1400	4200	4.6
	1.5/1.75	72	24				1500	4400	8.1
630	1.0	60	20	1400*1100*2500	800*2100	1850*1750	1400	4200	4.6
	1.5/1.75	72	24				1500	4400	8.1
800	1.0	60	20	1400*1350*2500	900*2100	1960*2000	1400	4200	5.5
	1.5/1.75	72	24				1500	4400	9.7
	2.0	120	40				1750	4750	11
	2.5	130	45				1900	4950	14.1
1000	1.0	60	20	1600*1400*2500	900*2100	2050*2050	1400	4200	6.7
	1.5/1.75	72	24				1500	4400	11.7
	2.0	120	40				1750	4750	14.1
	2.5	130	45				1900	4950	13.4
1150	1.0	60	20	2000*1350*2500	1100*2100	2500*2150	1550	4450	16.7
	1.5/1.75	90	30				1650	4650	13.4
	2.0	120	40				1750	4750	15.4
	2.5	130	45				1900	4950	19.8
1350	1.0	60	20	2000*1500*2500	1100*2100	2500*2200	1550	4450	8.8
	1.5/1.75	90	30				1650	4650	15.4
	2.0	120	40				1750	4750	17.6
	2.5	130	45				1900	4950	22
1600	1.0	60	20	2000*1700*2500	1100*2100	2500*2400	1550	4450	10.4
	1.5/1.75	90	30				1650	4650	18.2
	2.0	120	40				1750	4750	20.8
	2.5	130	45				1900	4950	26
2000	1.0	60	20	2200*1850*2500	1200*2100	2700*2500	1550	4450	18.2
	1.5/1.75	90	30				1650	4650	26
	2.0	120	40				1750	4750	30
	2.5	130	45				1900	4950	33
2500	1.0	60	20	2200*2100*2500	1200*2100	2700*2800	1550	4450	26
	1.5/1.75	90	30				1650	4650	30
	2.0	120	40				1750	4750	33
	2.5	130	45				1900	4950	8



Machine roomless passenger elevator 無機房の乗客エレベーター

Machine roomless elevator incorporates the idea of environmental protection and energy saving, saving, saves building areas and raises design freedom, embodying fully green humanistic ideas. Compared with toothed gear elevators of the same weight, it saves 25% electricity and 10% building area. Elevator breaks the requirements for traditional elevators to be equipped with a machine room and provides infinite possibility to create in a limited space in modern buildings.

無機房のエレベーターの製品は環境保護の理念に精通して、省エネルギーの消費量が減少して、建築面積を節約して、設計の自由度を高めて、十分に緑色の人文の理念を体现することができます。同じ重さのレベルのある歯車エレベーターと比べて、節電は30%になり、建 面 の10%を節約し、エレベーターは伝統エレベーターを突破して、機関部屋の要求を設定しなければならない。



Space Saving

Can be flexibly applied to different types of buildings. Your building will have more stylish changes in the architectural appearance, the removal of the traditional machine room can also bring huge cost savings.

Advanced Traction Machine

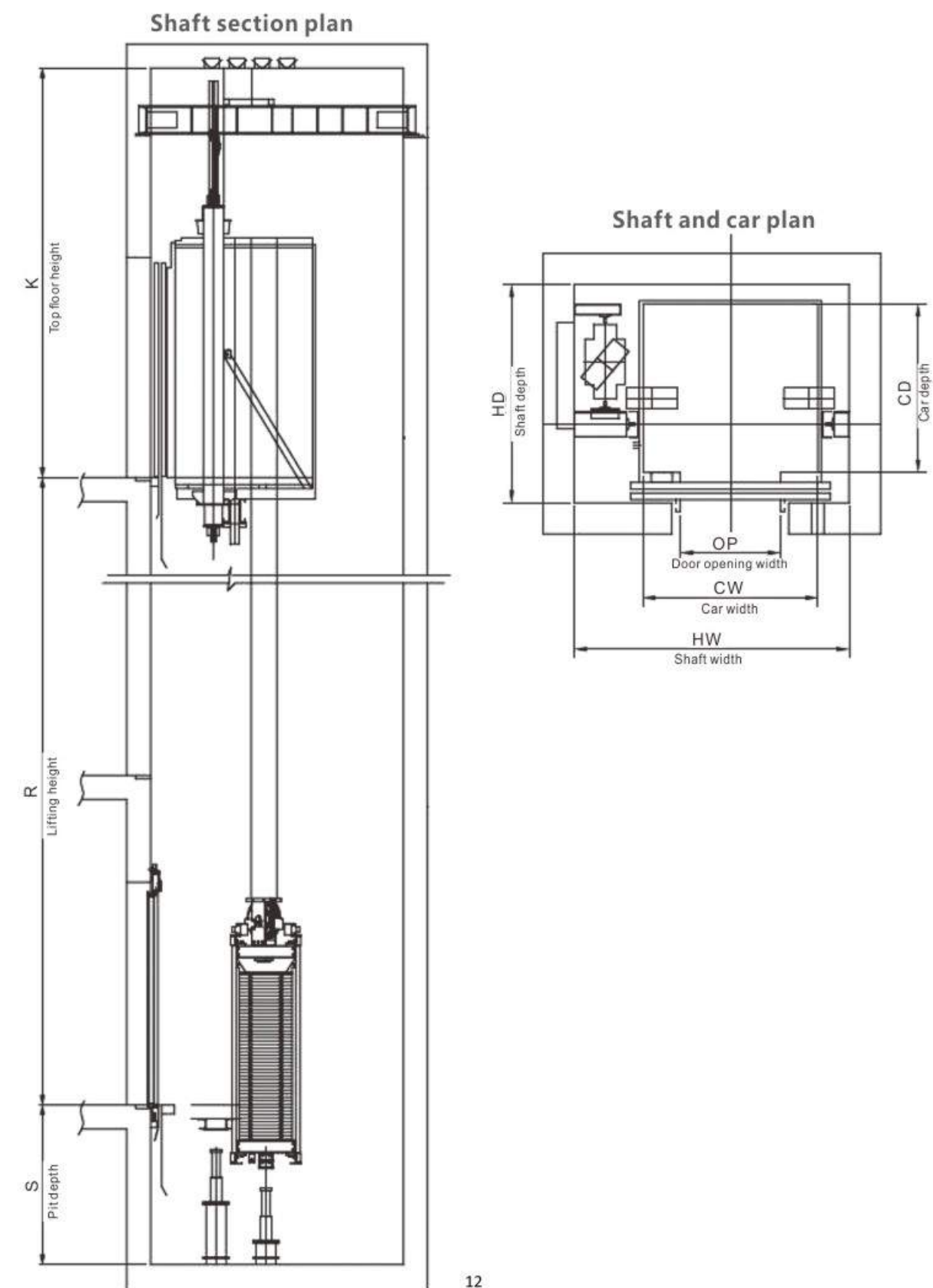
Its ultra small and ultra light appearance design is applicable for machine room-less elevator shaft, and the new brake device and noise reduction processing can further minimize noise of the elevator.

Control System

Machine room-less control system can carry on the data processing more efficiently and easily meet the strict requirements for precision control and group control management.



Machine roomless passenger elevator
Layout Shop Drawing



Machine roomless passenger elevator
Technical Specification

Load (kg)	Speed (m/s)	Max. Travel (m)	Max. Floors	Cabin Size(mm)	OP(mm)	Shaft Size(mm)	Pit	Overhead	Motor Power
				CW*CD*CH	2P CO	HW*HD	S(mm)	K (mm)	KW
450	1.0	60	20	1200*1100*2300	700*2100	1700*1750	1400	4200	4.6
	1.5/1.75	72	24				1500	4400	8.1
630	1.0	60	20	1400*1100*2300	800*2100	1850*1750	1400	4200	4.6
	1.5/1.75	72	24				1500	4400	8.1
800	1.0	60	20	1400*1350*2300	900*2100	1960*2000	1400	4200	5.5
	1.5/1.75	72	24				1500	4400	9.7
	2.0	120	40				1750	4750	11
	2.5	130	45				1900	4950	14.1
1000	1.0	60	20	1600*1400*2300	900*2100	2050*2050	1400	4200	6.7
	1.5/1.75	72	24				1500	4400	11.7
	2.0	120	40				1750	4750	14.1
	2.5	130	45				1900	4950	13.4
1150	1.0	60	20	2000*1350*2300	1100*2100	2500*2150	1550	4450	16.7
	1.5/1.75	90	30				1650	4650	13.4
	2.0	120	40				1750	4750	15.4
	2.5	130	45				1900	4950	19.8
1350	1.0	60	20	2000*1500*2300	1100*2100	2500*2200	1550	4450	8.8
	1.5/1.75	90	30				1650	4650	15.4
	2.0	120	40				1750	4750	17.6
	2.5	130	45				1900	4950	22
1600	1.0	60	20	2000*1700*2300	1100*2100	2500*2400	1550	4450	10.4
	1.5/1.75	90	30				1650	4650	18.2
	2.0	120	40				1750	4750	20.8
	2.5	130	45				1900	4950	26
2000	1.0	60	20	2200*1850*2300	1200*2100	2700*2500	1550	4450	18.2
	1.5/1.75	90	30				1650	4650	26
	2.0	120	40				1750	4750	30
	2.5	130	45				1900	4950	33
2500	1.0	60	20	2200*2100*2300	1200*2100	2700*2800	1550	4450	26
	1.5/1.75	90	30				1650	4650	30
	2.0	120	40				1750	4750	33
	2.5	130	45				1900	4950	8

カスタマイズされたデザイン Customized Design

AOYAMA ELEVATOR apply different ceiling, wall and floor flexibly in the car decoration.
Combined with fine technique and elaborate process, we can provide hundreds of designs and great spatial experience for you.



AC 01 Standard Decoration

Ceiling — Hairline stainless steel, LED
Side wall — Hairline stainless steel
Rear wall — Hairline stainless steel
Front wall — Hairline stainless steel
Floor — PVC AF03
Handrail — Hairline stainless steel Hr02

AC 00 Economic type Decoration

Ceiling — Painted steel, LED
Side wall — Painted steel
Rear wall — Painted steel
Front wall — Painted steel
Floor — PVC AF01
Handrail — -



カスタマイズされたデザイン Customized Design



COP 01
Standard

COP Standard

Indicator — 7-inch black LCD
Panel — Hairline Stainless steel
button — Square button, white light



Blue Screen



Red dot matrix



7 inch LCD



10.4 inch LCD

HOP

Free Collection



HOP 11



HOP 12



Disabled COP 81 HOP 81



Operation Panel



COP 22



HOP 23



COP 24



HOP 24



COP 25



COP 26

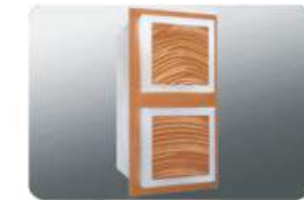
Hall Lantern



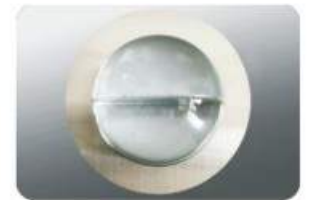
HL 01



HL 02



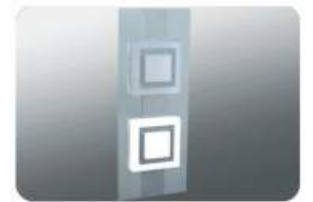
HL 03



HL 04



HL 05



HL 06



HOP 91



HOP 92



HOP 93



HOP 94



Decoration Design

Landing door

series



AD 01

AD 02

AD 03

AD 04

AD 05

Ceiling

series



CL 01

CL 02

CL 03

CL 04

CL 05

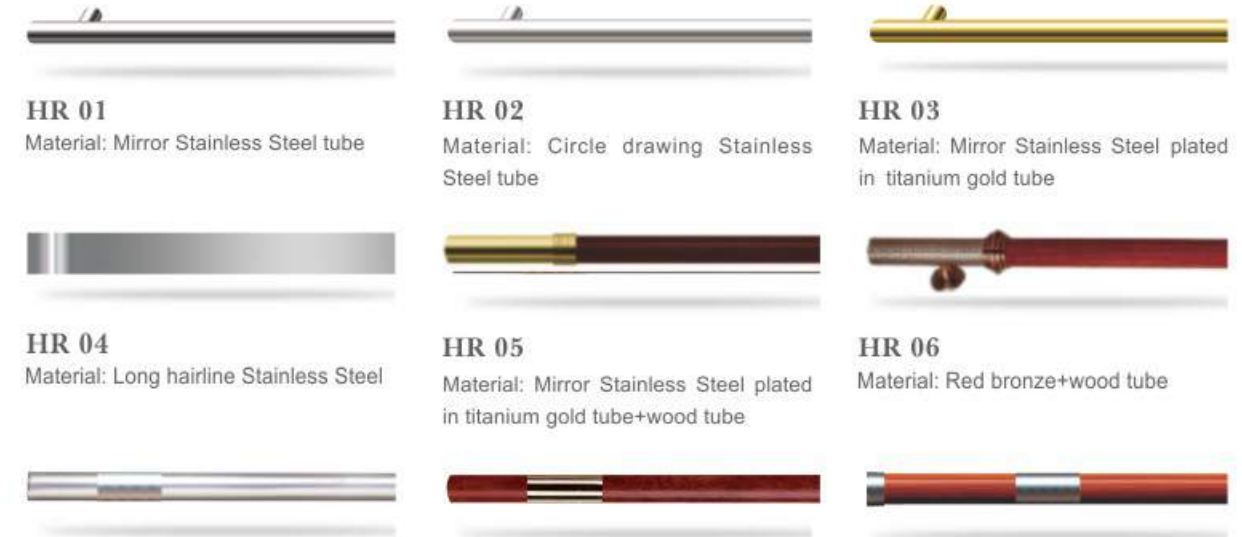
CL 06

CL 07

CL 08

Handrail

series



HR 01

Material: Mirror Stainless Steel tube

HR 02

Material: Circle drawing Stainless Steel tube

HR 03

Material: Mirror Stainless Steel plated in titanium gold tube

HR 04

Material: Long hairline Stainless Steel

HR 05

Material: Mirror Stainless Steel plated in titanium gold tube+wood tube

HR 06

Material: Red bronze+wood tube

HR 07

Material: Circle drawing Stainless Steel tube

HR 08

Material: Red bronze+wood tube

HR 09

Material: mirror stainless steel + wood pipe

Floor

series



AF 01

AF 02

AF 03

AF 04

AF 05

AF 06

AF 07

AF 08

AF 09

Cabin Design Japanese Office Elevator Style



AC 11

Ceiling —— Mirror Stainless Steel roof+acrylic+LED
Side Wall —— Mirror Stainless Steel+hairline Stainless Steel
Rear Wall —— Etching+Hairline Stainless Steel
Handrail —— HR01 Circle drawing stainless steel tube
Floor —— Parquet PVC



AC 12

Ceiling —— Spray steel frame+acrylic+LED
Side Wall —— Mirror Stainless Steel etching plated in black titanium
Rear Wall —— Mirror Stainless Steel etching plated in black titanium
Floor —— parquet PVC

Cabin Design Japanese Office Elevator Style



AC 15

Ceiling —— Mirror Stainless Steel roof+acrylic+LED
Side Wall —— Mirror Stainless Steel etching plated in black titanium
Rear Wall —— Mirror Stainless Steel etching plated in black titanium
Handrail —— HR01 Circle drawing stainless steel tube
Floor —— Parquet PVC



AC 16

Ceiling —— Matte Stainless Steel+LED
Side Wall —— Mirror stainless steel etching+hairline Stainless Steel
Rear Wall —— Baking finish glass+hairline Stainless Steel
Handrail —— HR02 Circle stainless steel
Floor —— Parquet PVC



AC 13

Ceiling —— Matte Stainless Steel+mirror stainless steel+LED
Side Wall —— Baking finish glass+hairline Stainless Steel
Rear Wall —— Baking finish glass+hairline Stainless Steel
Handrail —— Hairline stainless steel flat handrail
Floor —— parquet stone



AC 14

Ceiling —— Hair brown Stainless Steel+translucent stone+LED
Side Wall —— Mirror Stainless Steel in black titanium+cellular marble
Rear Wall —— Hair brown Stainless Steel
Handrail —— Circle brown stainless steel tube
Floor —— Mono-stone



AC 17

Ceiling —— Matte Stainless Steel+mirror stainless steel+LED
Side Wall —— Mirror Stainless Steel plated in black titanium
Rear Wall —— Mirror Stainless Steel plated in black titanium
Handrail —— Hairline stainless steel flat handrail
Floor —— parquet stone



AC 18

Ceiling —— Baking varnish steel plate + acrylic lighting
Side Wall —— Mirror stainless steel titanium etching+ sandblasting
Rear Wall —— Mirror stainless steel titanium etching+ sandblasting
Handrail —— Titanium plating gold in mirror stainless steel tube
Floor —— Marble spelling

Cabin Design Japanese Hotel Elevator Style



AC 21

Ceiling — Mirror Stainless Steel roof+acrylic+LED
Side Wall — Mirror Etching Stainless Steel+Mirror STST
Rear Wall — Mirror Etching Stainless Steel+Mirror STST
Handrail — HR01 Circle drawing stainless steel tube
Floor — parquet stone



AC 22

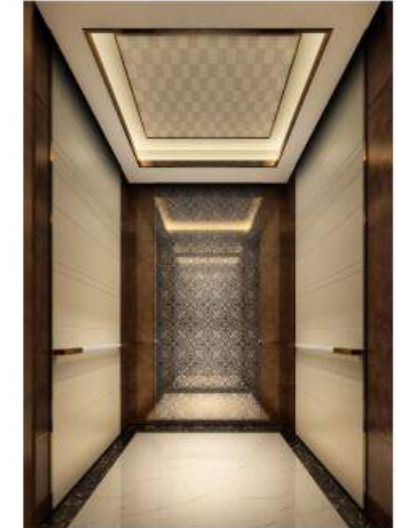
Ceiling — Titanium Gold Stainless Steel roof+acrylic+LED
Side Wall — Titanium Gold Hairline Stainless Steel+Etching STST
Rear Wall — Titanium Gold Hairline Stainless Steel+Etching STST
Floor — Mono-stone

Cabin Design Japanese Hotel Elevator Style



AC 25

Ceiling — Mirror rose gold stainless steel roof + acrylic + LED
Side Wall — Mirror stainless steel etched + Rose stainless steel
Rear Wall — Mirror stainless steel etched + Rose stainless steel
Floor — Marble spelling



AC 26

Ceiling — Lacquer board + bronze stainless steel bar + hidden lamp
Side Wall — Fireproof board with wood grain + skin pattern
Rear Wall — Wood pattern fireproof plate + mirror stainless steel etching
Handrail — Square bronze stainless steel and imitation marble
Floor — Marble spelling



AC 23

Ceiling — Titanium bronze Stainless Steel roof+acrylic+LED
Side Wall — Bronze Stainless Steel+cellular marble
Rear Wall — Etching Mirror Stainless Steel+Bronze STST
Handrail — Red bronze+mirror light
Floor — Parquet stone



AC 24

Ceiling — Titanium bronze Stainless Steel roof+acrylic+LED
Side Wall — Bronze Stainless Steel+cellular marble
Rear Wall — Etching Mirror Stainless Steel+Bronze STST
Handrail — Red bronze+mirror light
Floor — Parquet stone



AC 27

Ceiling — Lacquer board + sub light titanium gold stainless steel + hidden lamp +LED
Side Wall — Titanium stainless steel etched + wood grain fireproof board
Rear Wall — Titanium stainless steel etched + wood veneer
Handrail — Wood + mirror titanium stainless steel
Floor — Marble spelling



AC 28

Ceiling — Lacquer wood frame (white, light)+LED
Side Wall — Short hairline stainless steel + solid wood + stainless steel bar
Rear Wall — Mirror stainless steel + solid wood + stainless steel bar
Floor — Mosaic mosaic



Villa Elevator 別荘エレベーター

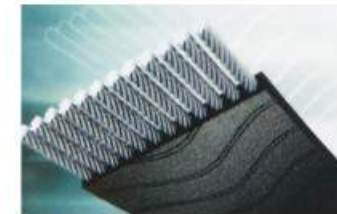
AOYAMA ELEVATOR Villa elevator both in indoor or outdoor installation, no need special shaft, without special well pit, without special room, more don't need a large number of civil construction, just like any place you home appliance is convenient, not subject to any restrictions.

屋内または屋外設置の両方で青山エレベーターエレベーターシャフトのヴィラ、特別の必要でない、特別な井戸穴なしで、特別室なしで、より多くのない土木建設の多数を必要とします、どんな場所でもあなたは家電製品のように便利ですが、任意の制限はない。

Steel belt Villa Elevator

鉄分型別荘エレベーター

AOYAMA ELEVATOR villa elevator adopts more energy saving, environmental protection and durable steel belt, with high efficiency and energy saving mainframe, frequency conversion door machine, safe and reliable light screen door protection device and many other international leading technologies.



Composite Steel Belt

VS



Traditional Wire Rope

Revolutionary innovation

The polyurethane material layer, no lubrication, light weight, low vibration amplitude.

The service life is 2~3 times of traditional wire rope.

Easy to bend, increase with the driving wheel contact area, high safety factor.

Higher stability.

Same well, larger car spaces



Technical Specification Traction type

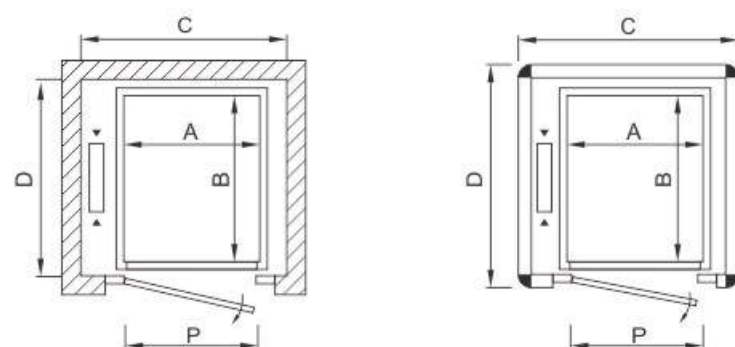
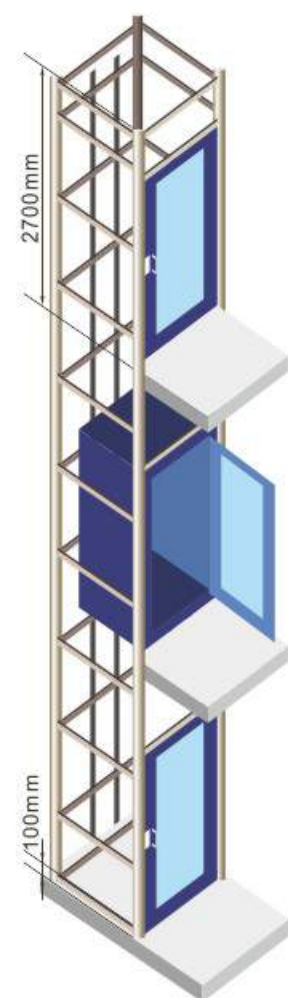
Load (kg)	Speed (m/s)	Max. Travel (m)	Max. Floors	Cabin Size(mm)	OP(mm)	Shaft Size(mm)	Pit	Overhead	Motor Power
				CW*CD*CH	2P CO	HW*HD	S(mm)	K (mm)	KW
320	0.25	12	4	900*1200*2200	700*2100	1600*1600	350	2800	1.1
	0.4	20	6				350	2800	1.1
400	0.25	12	4	1000*1200*2200	800*2100	1700*1600	350	2800	1.1
	0.4	20	6				350	2800	1.1
	0.63	30	10				350	3000	1.9



Hydraulic Villa Elevator

油圧式別荘エレベーター

AOYAMA ELEVATOR hydraulic lift has the reliable hydraulic drive system, The quiet and smooth lift travel. The safety means such as safety valve of the protective hydraulic system, one-way valve which prevents hydraulic oil from backflow, anti-stall device and so on ensure the secure use of the lift.



Building Shaft Structure

Load (kg)	Cabin Size(mm) CW*CD*CH	OP(mm) 2P CO	Shaft Size(mm) HW*HD	Pit S(mm)	Overhead (mm)
320	800*1250*2200	750*2100	1245*1450	100	2700
400	1000*1250*2200	950*2100	1445*1450	100	2700

Aluminum Alloy Shaft Structure

Load (kg)	Cabin Size(mm) CW*CD*CH	OP(mm) 2P CO	Shaft Size(mm) HW*HD	Pit S(mm)	Overhead (mm)
320	800*1250*2200	750*2100	1395*1570	100	2700
400	1000*1250*2200	950*2100	1590*1570	100	2700

Applicable Occasions

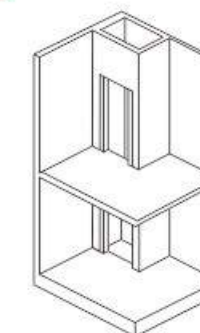
Focus on high quality
national brands

The following five building structures can
be installed our products

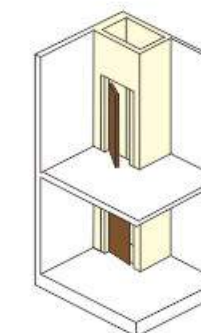
①②③④⑤ the need to install the elevator shaft
used, customers can also use their own metal frame
or concrete and other materials in advance to
establish the well.

HOISTWAY

①



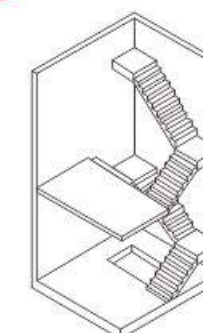
The building has a special elevator shaft



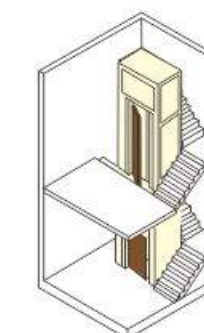
The elevator can be installed directly.
Special well tunnel

ROTATORY STAIRS

②



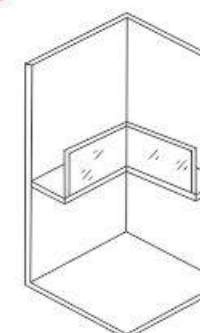
There is a proper space around the
middle of the staircase



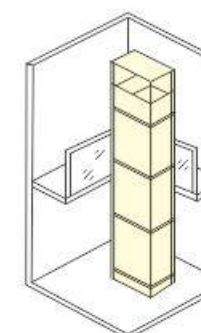
Installing an elevator in the middle

LOBBY

③



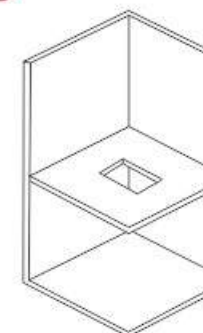
A hollow hall or room



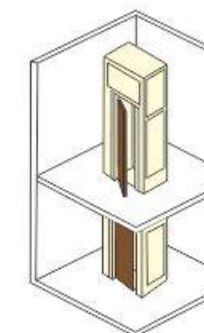
Install in a hall or room
Well track installation elevator

SLAB HOLE

④



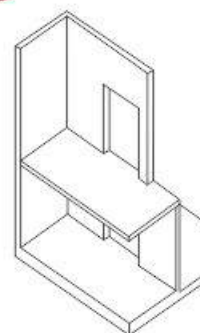
There is no room for the building. The
elevator can only be installed in the room



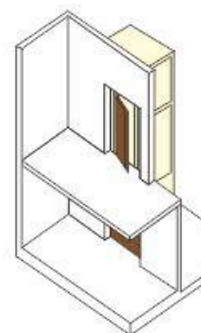
Open the right hole on the floor.
Installation of elevator with well path

OUTSIDE

⑤



There is no proper space in the building



In the case of permission,
Installation of elevator in outdoor well

Cabin Design Japanese Villa Elevator



AC 55

- Ceiling — Lacquer board + bronze stainless steel bar + hidden lamp
- Side Wall — Bronze mirror stainless steel + marble + hidden lamp
- Rear Wall — Bronze mirror stainless steel + marble
- Handrail — woodiness
- Floor — Marble spelling



AC 51

- Ceiling — Hairline Stainless Steel roof+acrylic+LED
- Side Wall — Hairline Stainless Steel
- Rear Wall — Hairline Stainless Steel
- Floor — Parquet PVC



AC 52

- Ceiling — Mirror Stainless Steel roof+LED
- Side Wall — Painted Steel
- Rear Wall — Mirror Stainless Steel
- Handrail — HR02 Circle drawing stainless steel tube
- Floor — Parquet PVC



AC 56

- Mirror stainless steel + floral flute lamp belt — Ceiling
- Mirror surface etching of Black Titanium mirror + titanium gold — Side Wall
- Mirror surface etching of Black Titanium mirror + titanium gold — Rear Wall
- Parquet PVC — Floor



AC 53

- Ceiling — Mirror Stainless Steel roof+acrylic+LED
- Side Wall — Mirror Stainless Steel+Glass
- Rear Wall — Mirror Stainless Steel+Glass
- Handrail — HR01 Circle drawing stainless steel tube
- Floor — Parquet PVC



AC 54

- Ceiling — Titanium Gold Mirror Stainless Steel+LED
- Side Wall — Titanium Gold Mirror Stainless Steel+Cellular marble
- Rear Wall — Titanium Gold Etching mirror Stainless Steel
- Floor — Parquet stone



観光エレベーター

Panormic elevator

AOYAMA ELEVATOR has a variety of style, design spirit, the beautiful view of sightseeing with a transparent car design, and the beautiful appearance of the elevator and the building. The products can be widely used in large shopping malls, shopping centers, high-end Traders Hotel, senior office buildings, entertainment centers, airports, stations and other public places.

青山エレベータースタイルの様々なデザインの精神を持って、透明な車の設計による観光の美しい風景と美しい外観エレベーターの建物。製品のショッピングセンターの大型ショッピングモールに広く使用することができ、ハイエンドのシニアトレーダー・ホテル、オフィスビル、エンターテインメントセンター、空港、駅と他の公的な場所。

Cabin Design Japanese Panoramic Elevator



AC 85

Ceiling — Mirror Stainless Steel roof+acrylic+LED
Side Wall — Hairline Stainless Steel
Rear Wall — Hairline Stainless Steel+Glass
Handrail — HR02 Circle drawing stainless steel tube
Floor — Parquet PVC



AC 87

Ceiling — Mirror Stainless Steel roof+acrylic+LED
Side Wall — Hairline Stainless Steel+Glass
Rear Wall — Hairline Stainless Steel+Glass
Handrail — HR02 Circle drawing stainless steel tube
Floor — Parquet PVC



AC 86

Ceiling — Titanium Gold Mirror Stainless Steel roof+acrylic+LED
Side Wall — Titanium Gold Mirror Stainless Steel+Glass
Rear Wall — Titanium Gold Mirror Stainless Steel+Glass
Handrail — HR03 Circle drawing stainless steel tube
Floor — Parquet PVC



AC 88

Ceiling — Mirror Stainless Steel roof+acrylic+LED
Side Wall — Hairline Stainless Steel
Rear Wall — Hairline Stainless Steel+Glass
Handrail — HR02 Circle drawing stainless steel tube
Floor — Parquet PVC

Bed Elevator 病室のハイリフト



AOYAMA stretcher elevator is specially designed for high-rise residential buildings with 12 floors and above, designed to accommodate stretcher products. According to the special features of the product, it has the advantages of large space, simplified equipment and simple operation, which will play an important role in high-rise residence.

青山ベッドエレベーターは、あなたの建築量のために設計することができます。高強度型材を採用して作られた奥ボックスを採用して、各種の重い担架を乗せることができ、安心して患者や大きなものを運ぶことができ、効果的に人々と物品の安全を保護します。



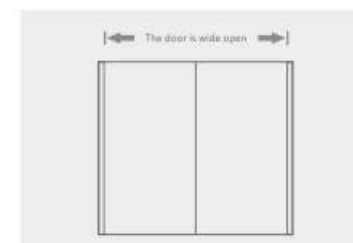
Tailor made safety and convenience

AOYAMA stretcher elevator can be designed for your buildings. Use high strength profile to make the car, can carry all kinds of heavy weight stretcher, ease to transport patient or large item, effectively protect people and article safety.



Human nature design is rich

Meet the needs of patients with emergency supplies, humanized design, the configuration of a complete set of advanced equipment, stable operation and comfortable. Capsules capacious and bright, not only can accommodate stretcher, but also provides convenience to people carrying large furniture.



The flat layer is accurate and the door is wide open

The leveling accuracy can be controlled within a millimeter range. Open door can reach maximum width, easy stretcher free in and out.

Technical Specification

Load	Speed	Max. Travel	Max. Floors	Cabin Size(mm)	OP(mm)	Shaft Size(mm)	Pit	Overhead	Motor Power
(kg)	(m/s)	(m)		CW*CD*CH	2P CO	HW*HD	S(mm)	K (mm)	KW
1000	1.0	60	20	1100*2100*2500	900*2100	2000*2500	1400	4200	6.7
	1.5/1.75	72	24				1500	4400	11.7
	2.0	120	40				1750	4750	14.1
	2.5	130	45				1900	4950	13.4
=1600	1.0	60	20	1400*2400*2500	1100*2100	2400*2750	1550	4450	10.4
	1.5	72	24				1650	4600	18.2
	1.75	90	30				1650	4650	18.2
	2.0	120	40				1750	4750	20.8
	2.5	130	45				1900	4950	26
2000	1.0	60	20	1550*2600*2500	1200*2100	2550*3000	1550	4450	18.2
	1.5	72	24				1650	4600	20.8
	1.75	90	30				1650	4650	26
	2.0	120	40				1750	4750	30
	2.5	130	45				1900	4950	33

貨物輸送エレベーター

Freight elevator



In the field of logistics, in the needs of factories, warehouses, shopping centers, supermarkets, stations, airports and other places, combined with the years of elevator production experience of AOYAMA ELEVATOR the production and manufacture of reliable cargo staircase products can be carried out in all kinds of bad environment. AOYAMA ELEVATOR uses 6 sets of guideways for heavy goods lift to ensure safe and reliable elevators, high strength, durability and smooth operation.

物流の分野では、工場、倉庫、ショッピングセンター、スーパー、駅、空港などのない場所の需要の中で、青山エレベーターの長年のエレベーターの生産経験を結びつけて、信頼できるエスカレーター製品を製造して、各種の悪質な環境の下で貨物輸送の仕事を行うことができます。青山エレベーターは6組のレールを採用して、重型の貨物エレベーターに使用して、エレベーターの安全に信頼できることを確保して、構造の強度が高く、経久で長持ちして、安定することなどの長所があります。



Cabin Design Cargo Elevator



Checkered Steel Plate
standard



Dot Rubber Plate



Checkered Stainless Steel Plate



Wooden

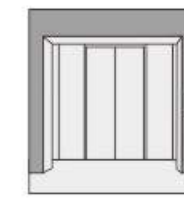


Black Plastics

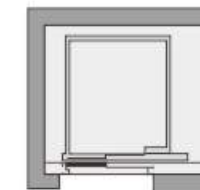
Opening mode



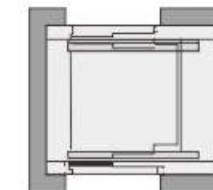
横に足を折る
Center Opening Door



二つ折り門に分
4 Panel Center
Opening Door

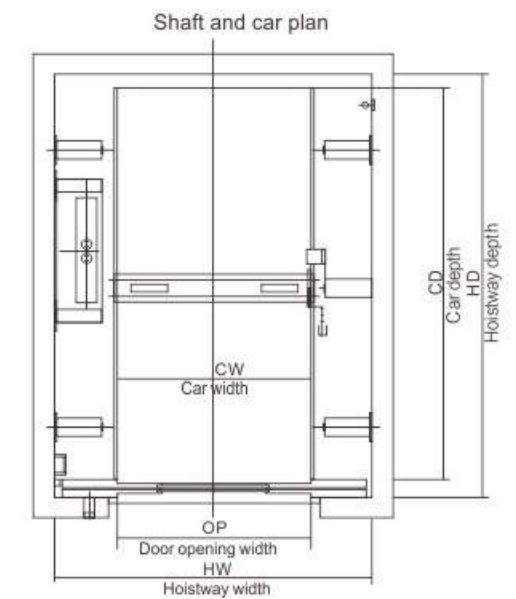


一通の扉
Sing Opening Door



貫通門
Through Opening Door

Layout Shop Drawing



Machine Room Technical Specification

Load (kg)	Speed (m/s)	Max. Travel (m)	Max. Floors	Cabin Size(mm)	OP(mm)	Shaft Size(mm)	Pit	Overhead	Motor Power
				CW*CD*CH	2P CO	HW*HD	S(mm)	K (mm)	KW
1000	0.5	24	9	1400*1600*2200	1100*2100	2450*2000	1500	4200	5.5
	1.0	60	20				1500	4300	11
	1.75	72	24				1750	4500	15
2000	0.5	24	9	1700*2300*2200	1500*2100	2800*2800	1500	4200	8.5
	1.0	60	20				1500	4300	15
	1.75	72	24				1650	4500	22.9
3000	0.5	24	9	2000*2800*2200	1800*2100	3300*3300	1500	4500	18.5
	1.0	60	20				1500	4800	30
5000	0.25	12	5	2400*3600*2500	2400*2400	4000*4000	1500	4800	15
	0.5	24	9				1500	4800	26
	1.0	60	20				1500	5100	55
6400	0.25	12	5	2600*4200*2500	2600*2400	4250*4700	1500	4800	18.5
	0.5	24	9				1500	4800	30
8000	0.25	12	5	2800*4800*2500	2800*2400	4500*5300	1500	5200	18.5
	0.5	24	9				1500	5200	37
12000	0.25	12	5	3500*5600*2500	3000*2400	5100*6100	1500	5200	37
	0.5	24	9				1500	5200	63

Machine Room less Technical Specification

Load (kg)	Speed (m/s)	Max. Travel (m)	Max. Floors	Cabin Size(mm)	OP(mm)	Shaft Size(mm)	Pit	Overhead	Motor Power
				CW*CD*CH	2P CO	HW*HD	S(mm)	K (mm)	KW
1000	0.5	24	9	1400*2600*2200	1100*2100	2450*2100	1400	4200	6
	1.0	60	20				1500	4400	6
2000	0.5	24	9	1700*2300*2200	1500*2100	3000*2900	1750	4750	6
	1.0	60	20				1900	4950	12.3
3000	0.5	24	9	2000*2800*2200	1800*2100	3300*3300	1550	4450	10.5
	1.0	60	20				1650	4600	20.9
5000	0.25	12	5	2400*3600*2500	2400*2400	4500*4100	1650	4650	16.5
	0.5	24	9				1750	4750	16.5

雑物エレベーター Dumbwaiter Elevator



AOYAMA ELEVATOR with high safety standards to create sundry elevators, with excellent quality and innovative appearance, in a variety of forms to serve all kinds of buildings. AOYAMA sundries elevator is small and flexible and simple in structure. It provides a quick, convenient and economical vertical transportation for small cargo staircase in all kinds of buildings, so as to improve people's good life.



Ground type
ウィンドウ型



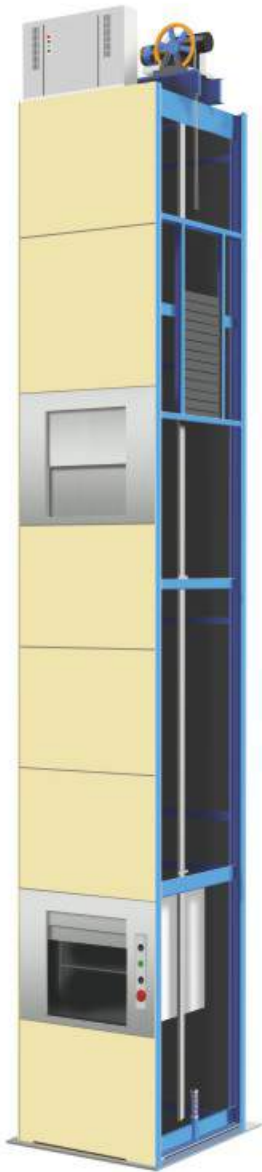
Window type
ランディング型

Diversified lift car design

Many capsules design, material for the customer free to choose, the greatest degree of meet the personalized selection of architectural style and taste.

Technical Specification

Load (kg)	Speed (m/s)	Max. Travel (m)	Max. Floors	Cabin Size(mm)	OP(mm)	Shaft Size(mm)	Pit	Overhead	Motor Power
				CW*CD*CH	2P CO	HW*HD	S(mm)	K (mm)	KW
100	0.4	20	6	750*750*1000	700*1000	1200*900	750	3600	2.2
200	0.4	20	6	1000*1000*1200	950*1200	1450*1150	1000	3600	2.2
300	0.4	20	6	1100*1100*1200	1050*1200	1550*1300	1000	3600	2.2



自動車エレベーター Car Elevator



Dual operation buttons box

There are two operation box in the car. Therefore the driver can operate the elevator in the car without stepping out of it.

Front rear door opening are available

The elevator car sets front / rear door opening which is more convenient for the safety sector and for the cars to enter into / exit from the elevator cars.

Safety guide device

Safety guide device sets in the car ground to ensure fine security of both the cars and the elevators.

Special display system

Special circuit control and display system is convenient for the drivers inside / outside the car.

Be steady and powerful to easily achieve success

重厚な余裕が危機を抱えている

With the development of economy and the continuous improvement of people's living conditions, cars gradually enter the homes of ordinary people.

The car elevator made by AOYAMA can be widely used in parking lot, car repair factory, car dealer, underground garage and so on. It is undoubtedly the first choice for your ladder.



Technical Specification

Load	Speed	Max. Travel	Max. Floors	Cabin Size(mm)	OP(mm)	Shaft Size(mm)	Pit	Overhead	Motor Power
(kg)	(m/s)	(m)		CW*CD*CH	2P CO	HW*HD	S(mm)	K (mm)	KW
3000	0.5	24	9	2800*5650*2200	2800*2100	4600*6130	1400	4500	18.5
	1.0	60	20				1650	4800	30
5000	0.25	12	5	2400*3600*2500	2400*2400	4500*4100	1650	5200	15
	0.5	24	9				1650	5200	26

Elevator Function

Function name	S/O	Function description
Self-return without calling home landing function	S	Regarding single lift, home landing can be set according to actual building requirements. If no calling or registered command within set time, the car automatically returns to home landing, shuts the door and waits for command. The home landing is usually at 1F lobby or on the floor with heavy traffic flow.
Set hall/car door time	S	The door opening time to respond hallway calling is different from that of responding to car command, so it can be set individually.
Protection of door closing time	S	If door closing time exceeds set time due to mechanical block etc., after three times of door closing, if it still does not detect door closing signal, it automatically return to protection model. When the lift detects that the door had been closed normally, it resets to normal operation.
Door opening/closing button	S	Inching button that controls door opening and closing is set in the lift car operation panel so that the passengers can flexibly manage the door opening/closing time according to actual needs
Emergency fire-fighting operation	S	If fire alarm rings in the building, after the system received fire alarm signal, it cancel all the commands and calling signals, directly drive the lift to the fire-fighting floor, opens the door and evacuates the passengers.
Emergency lighting in the car	S	When lighting source goes wrong, it automatically provides car lighting with re-chargeable emergency power supply.
All selective collective control	S	All the registered car and hall calling commands will be responded according to the sequence of the lift's arriving at the landing. Car travel direction is decided by first-time registered car and hall calling command.
Car digital position indicator	S	It digitally shows the landing where the lift locates in the car operation panel so that the passengers are convenient to know the current travel position of the lift.
Hall & car calling /register	S	Register the hall and car calling command and store it, and then the button lamp is bright.
Display of car travel direction	S	The dynamic or static indicator shows the lift travel direction in the car
Intercom amid monitor room, machine room and the car	S	It can offer intercom amid monitor room, machine room and car (car-top, pit).Among them, monitor room has the master. It can offer one-to-one or one-to-many modes according to the clients' requirements.
Independent running	S	Turn on the special switch in the car operation cabinet, the lift will run independently without group control, and only respond to the car command.
Full-load non stop	S	A full-loaded car bypassed hall calls, directly reach the designated floor, in order to maintain maximum operation.
Overload non-start (warning light and buzzer)	S	A beep, as well as voice guidance, sounds to alert the passengers that the car is overloaded: the doors remain open and the car does not leave that floor until enough passenger exit the car.
Running times display function	S	For the convenience of repair and maintenance, lift control cabinet sets a counter to count total travel times of the lift
Car-top and control cabinet emergency electric travel	S	Control cabinet sets inspection operation switch, inspection button, emergency stop device at the car-top. In inspection the car-top, it gives first priority to

Function name	S/O	Function description
		inspecting the control cabinet. After inspection operation starts, apart from responding the relevant inspection operation , the car is forbidden to respond other operations and can not move about
Ventilation Manual Control & Automatic Lighting Control	S	The ventilation fan is manually controlled by the switch on the car control panel. Lighting can be automatically controlled according to the lift running condition.
Automatic detection function to any troubles	S	It automatically detects any troubles of the lift system.
Alarm bell	S	Under special conditions the passenger scan press alarm button in the car to inform the outside in time
Light curtain door protection device	S	Door light curtain protection system forms an invisible light curtain protection safety net at the lift door. As soon as the ray gets interfered, the lift door re-opens and will not touch the passenger
Error- Land Cancel	S	If the wrong car button is pressed, it can be canceled by quickly pressing the same button again twice
Parking	S	When the lift is no longer used, starts "stop switch", in the hall, after responding the calling, it automatically returns to the designated floor and parks there
Automatic opening/closing	S	The lift automatically open and then close when it arrives the designated floor
Buffer	S	Installed at the bottom of shaft to guarantee the safety of the passenger / goods
Non-open outside door zone	S	The lift will not open when it is not in the door zone
Pre-torque output	S	It is pre-set according to the car load to allow smooth start
Voltage wavy detection	S	When the voltage wavy is too huge, the system goes into self-protection condition
Contactore detection	S	When the contactor fails, system records the faults and goes into self-protection condition
Relay detection	S	When the relay fails, system records the faults and goes into self-protection condition
Speed detection	S	When the lift speed is abnormal, system goes into protection condition
Self-rescue leveling running	S	When the lift is not under maintenance and not in the leveling position, as long as the safety requirements for start met, it automatically travels to the nearest leveling floor at low speed and opens the door, passengers can leave the lift safely
Reverse canceling	S	When selected floor is reverse to the current traveling direction, the command is canceled automatically.
Open the door outside this hall	S	If the lift is closing or already closed but yet running, it responds to the calling outside this hall and re-opens the door.
Call conglutination judgment	S	If the hall calling button is pressed for more than 20 seconds, it will be considered as conglutination (can not be reset), and not to be registered.
Repetition of hall closing	S	When door closing command is executed, if the door-lock loop is not connected within set time, re-opens the door and then close again.
Non-stop level setting	S	Non-stop at designated level

Function name	S/O	Function description
Home landing setting	S	If no calling or registered command within set time, the car automatically returns to home landing.
Display of any character for the floor	S	To display any character for the floor by pressing the buttons of the LCD monitor in the control cabinet
Evaluation of input disturbance	S	System can evaluate the input signal and show it on the LCD display in the control cabinet, instruct the operator to place the shaft wires and cables correctly and adequately grounded, eliminate possibilities of floor mis-display and non-leveling due to input disturbance because some shaft wires and cables are parallel connected to the main computer control board
Shaft parameter self-tuning	S	In inspection condition, from the lower limit switch to the upper limit switch, measure the door zone for every level and the shaft switch position, store the data for ever.
Reverse travel protection	S	If system detects that the lift is running reversely to the command for 3 seconds, it will immediately stop the lift, trigger defect alarm and forbid any operations before the CUP is reset
Anti-slip protection	S	If the system detects that the steel cable is slipping, it will stop any operation until the CUP is reset
Safety circuit protection	S	If safety circuit disconnects, the lift stops immediately
Limit switch protection	S	Once limit switch is triggered, the lift stops immediately
Upper / lower limit switch protection	S	Once Upper / lower limit switch is are triggered, the power supply for whole system shuts off immediately
Door-lock protection	S	Lift only starts when all door-lock loops are connected. Lift stops immediately once door-lock loop are disconnected or imperfect contact are detected
Running contactor protection	S	System will detect the reliability of the motor circuit , if there is any defect, the lift will be stop
Brake protection	S	Real-time monitor the on /off of the brake by brake beam detection switch. When the brake is not on as request, system will stop the lift
Manual rescue	S	In unbalanced state, release the brake through remote control, buffer stop, automatically alarm when the lift enters the door zone and conduct manual rescue
Forced deceleration and floor display calibration	S	When system detects the terminal switch, the lift will be forced to decelerate and the floor display will be calibrated automatically
Select the floor in the controller	S	Register the command by pressing the buttons of the LCD display in the control cabinet
Machine room door opening/closing	S	Input door opening /closing command by pressing the buttons of the LCD display in the control cabinet
Anti-nuisance function	S	In light-load condition, if too many commands are registered , all the commands will be erased and appropriate quantity of commands will be requested to re-register
Car arrival gong	S	Car arrival gong is set on the top of the car, when the lift arrives at the floor, it clearly rings to prompt the passengers

Function name	S/O	Function description
Parallel operation	S	Dynamic and centralized management of the calling information of two lifts to achieve maximum operation utility.
Motor temperature protection	S	When the main engine's temperature exceeds set value, power supply shuts off mandatory
Fire signal feedback	S	The lift provides fire signal feedback dry contact
Automatic control fan	S	System controls the fan on /off according to the operation conditions
UPS power –failure emergency leveling	O	When external power grid loses power, if the lift is no in the leveling position, "power –failure emergency rescue system " will reply on its own carrying power system to control the lift and travel to light-load direction till leveling position at inspection speed and opens the door. If the lift is in the leveling position, "power –failure emergency rescue system " will control the lift and opens the door
Attendant operation	O	Can select automatic operation or attendant operation mode by the special switch in the control cabinet
CCTV cable	O	The lift pre-set the CCTV cable form car to machine room
Emergency spare power operation	O	When electric supply loses power and the owner uses spare power supply, EOP will automatically convert the lift into spare power supply. The lift slowly travels to the lowest level and restores normal operation. When electric supply operate, EOP the automatically converts the lift into electric supply, the lift slowly travels to the lowest level and restores the normal operation
Firemen operation (in car)	O	After emergency operation, the lift returns to designated level and opens the door and goes into firemen operation condition
Re-leveling when the door is open	O	When the load in the car is changed due to passenger s enter into the car, if lift leveling position exceeds set value, it will re-level to achieve accurate leveling
Remote control	O	Collect the sub-district PC supervisory information through internet to achieve remote control (door opening, overload, fire, fault etc.)
Voice announcement	O	When then car arrives landing level, automatically voice announce to alert the passengers
I C card reader	O	Provides IC card reader, so that the card owner can reach designated floor
BA access (dry contact)	O	The lift collect level position, up /down signal, defect signal , overload, fire signal and feedback to clients
Sub-district PC supervisory	O	Use PC monitor, supervise the lift operation condition , including level position ,running direction, door opening overload, fire, defects etc.
Running –open	O	When the lift enters into door zone, it starts to open the door to shorter the waiting time when the lift stops
Group control operation	O	Dynamic and centralized management of the calling information of three lifts or more (<=8 lifts), assign the command based on pre-set optimal operation modes to achieve maximum operation utility
LCD display	O	LCD display of lift operation condition, calendar, picture etc.
Through-open car	O	Provide through-open car according to construction requirements.



Escalator エスカレーター

青山の自動手すりは工業の技術を引き取って、それは機械の部品の精度の上の何もない人間の安全な設計で技術の先進的で、穏やかで快適で、安全で信頼できる、省エネの環境保護などの設計理念を解釈しました。青山の自動手すりは都市の交通のために最も完備している解決案に力を尽くして、マーケット、地下鉄、列車の駅などの公共の場所と大流量の商業場所のために、楽しみに満ちたエスカレーターの運送計画を提供して、都市の交通渋滞を緩和します。

AOYAMA escalator leads the industrial technology, its omnipresent humanized security design on the precision of mechanical parts perfectly interprets the design concept of advanced technology, smooth and comfortable, safe and reliable, energy saving and environmental protection.

AOYAMA escalator is committed to providing the most perfect solutions for urban transportation, providing a fun escalator delivery scheme for public places, such as shopping malls, subway, railway stations, and other public places, in order to alleviate urban traffic congestion.

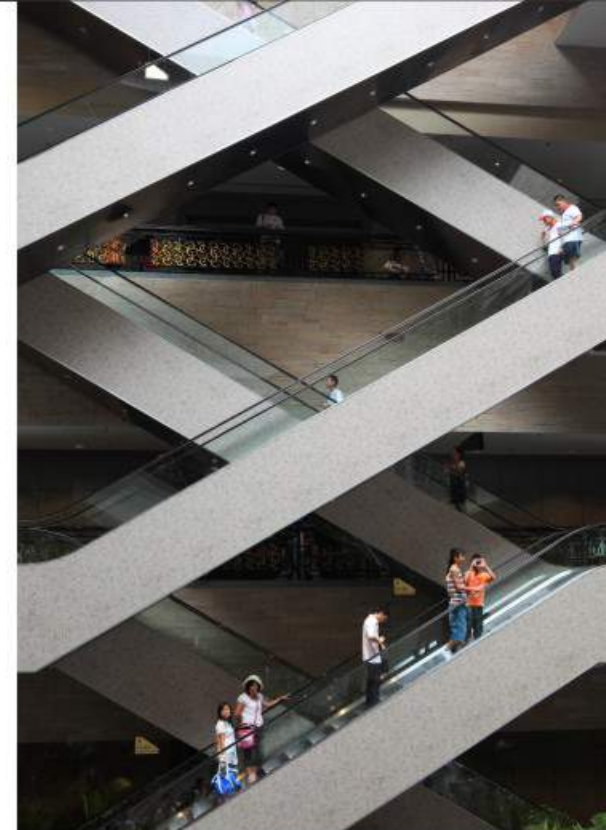
先進的な
製造工芸
Advanced manufacturing
technologies

品質保障システム
Quality guarantee
systems

革新的
な設計の理念
Innovative design
philosophy

先端技術
Cutting edge
technologies

多様な機能
Diverse functions



Simple and comfortable enjoy comfortable shopping

簡単に快適で、楽しいショッピングを楽しむ

Adopting the advanced control system and reducer, high-class driven chain and precise installation technology to ensure the comfort of the product.

先進的な制御システムおよび減速器を採用し、優良品質の駆動チェーンと精密なインストール技術を採用して、製品の快適性を保証します。





Moving walk 自動歩道

青山の自動歩道はその卓越した性能、柔軟なデザインスタイルと経済実用的な特徴によって、多くの取引先のニーズを満足させることができる。安全、快適、省エネ技術の向上、製品のアップグレードの全体的なペースを向上させました。青山移動歩行機は、空港、デパート、スーパー、遊園地などに広く使われ、都市の交通に明るい色を加えている。

Safe and stable 安全で信頼できる

The anti-skid slot design of the short pedal surface possesses good non-skid property and makes the usage safe and comfortable. The extreme small angle of inclination of the broach ensures the shopping cart easily pushed to the walkway. The short pedal directly connects with the transmission chain, ensuring the moving walk operates more smooth and steady and the product maintenance easier.

AOYAMA mobile sidewalk, with its excellent performance, flexible design style and economical and practical features, can well meet the needs of different customers. The improvement of safety, comfort and energy saving technology has improved the overall pace of product upgrading. AOYAMA mobile walker is widely used in airports, shopping malls, supermarkets, playgrounds and other places, and is committed to add bright colors to urban traffic.

テクノロジー
Practical

エレガント
Elegant

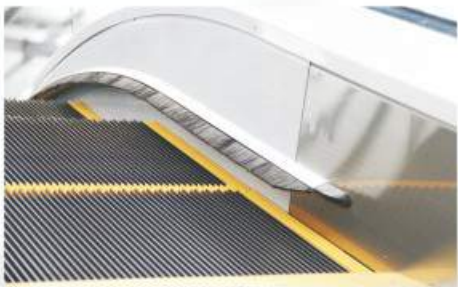
実用的である
Science

Standard Configuration 標準構成



Micro Computer board technology

The application of computer technology, has the feature of a stronger expansion, more refined fault detection function, and more security performance.



Skirt panel brush

The skirt panel brush is installed on the both sides of the skirt panel above the steps and prevent things or shoes from touching the skirt panel and prevent something from entering into the gap between skirt and steps.



Emergency Stop Button

On an emergency, press the button, the escalator/moving walk will immediately stop running.



Handrail inlet protection

The handrail inlet protection prevents objects or limbs from getting roped into the handrail re-circulation.



Automatic oiling

The handrail inlet protection prevents objects or limbs from getting roped into the handrail re-circulation.

Standard Configuration 標準構成



Water level detection sensor (outdoor standard)

Install water level detection sensor out of the machine room, which can automatically detect the water level, and found the water trouble.

Temperature controller (outdoor standard)

When the environment temperature is too low, the elevator system will automatically start heating device to ensure the normal operation of the escalator and also a comfortable environment for passengers.

Optional Configuration オプション設定



Emergency Stop Button

On an emergency, press infrared sensors at the access area detect passengers in entering the floor and activate the operation mode. After the passengers leave, the escalator will stop running to save energy. the button, the escalator/moving walk will immediately stop running.



Skirt panel illumination

The skirt panel lighting along the step running track is an elegant way to comply with the required illumination. At the same time, they are an architectural element emphasizing the escalators and giving passengers a pleasant and safe feeling.



OUT CLADDING

Special design of the escalator outside decoration, cover the whole escalator truss, perfect to create the escalator luxury

Handrail Colors

手すりの色



Balustrade panel colors

欄干のパネルの色

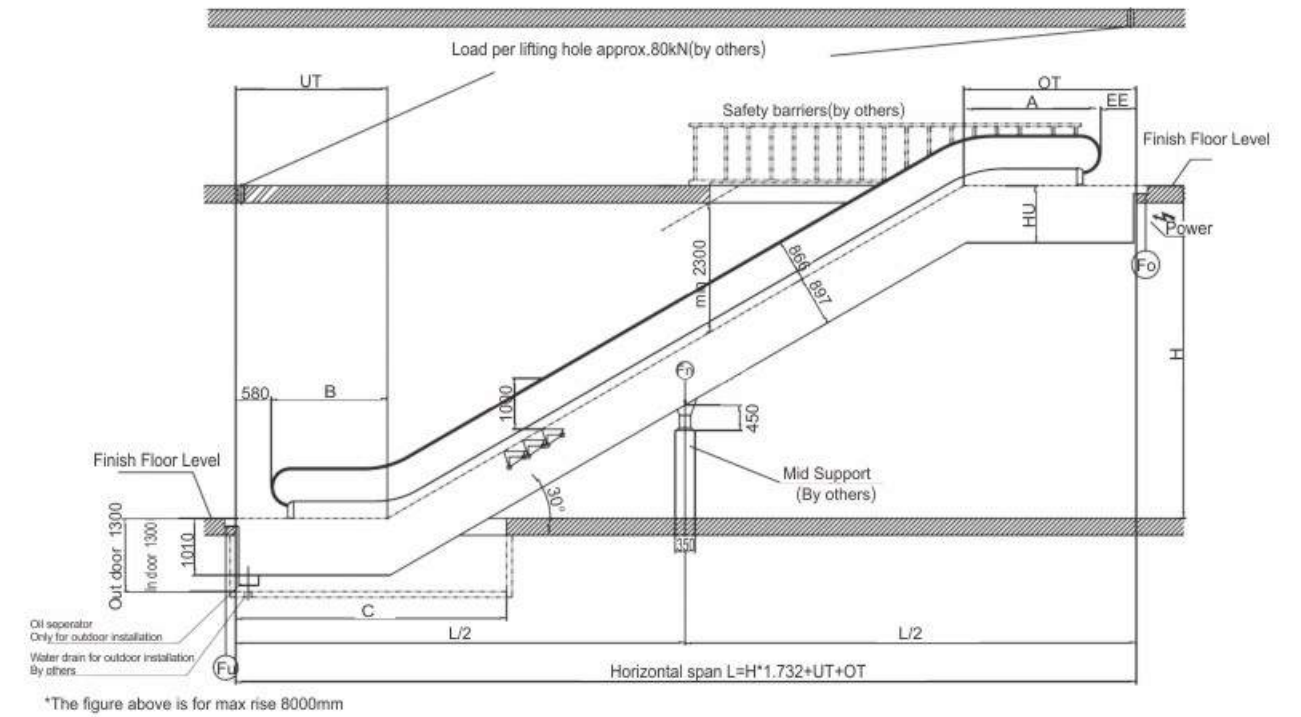


Handrail illumination

手すり照明



Layout specifications and dimensions



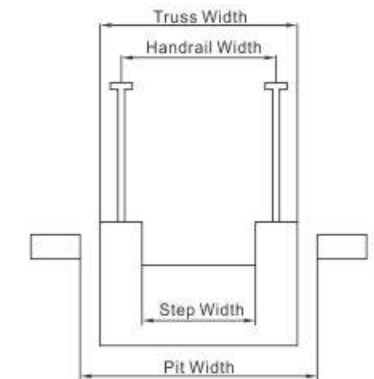
MSC 30 Degree

Horizontal step	Step Width	OT	UT	EE
2steps	1000 indoor	2567	2198	580
	1000 semi-outdoor / outdoor	2567	2198	580
	800 indoor	2567	2198	580
	800 semi-outdoor / outdoor	2817	2198	830
	600 indoor	2984	2198	997
	600 semi-outdoor / outdoor	2984	2198	997
3steps	1000 indoor	3057	2688	580
	1000 semi-outdoor / outdoor	3057	2688	580
	800 indoor	3057	2688	580
	800 semi-outdoor / outdoor	3307	2688	830
	600 indoor	3474	2688	997
	600 semi-outdoor / outdoor	3474	2688	997

Type	Horizontal Step	A	B	C
MSC	2steps	1987	1618	4300
	3steps	2477	2108	4800

*The 3 horizontal steps is needed if the travel height is over 8000mm.

*The standard pit depth is 1100mm. For outdoor escalator, the pit depth is 1300mm.



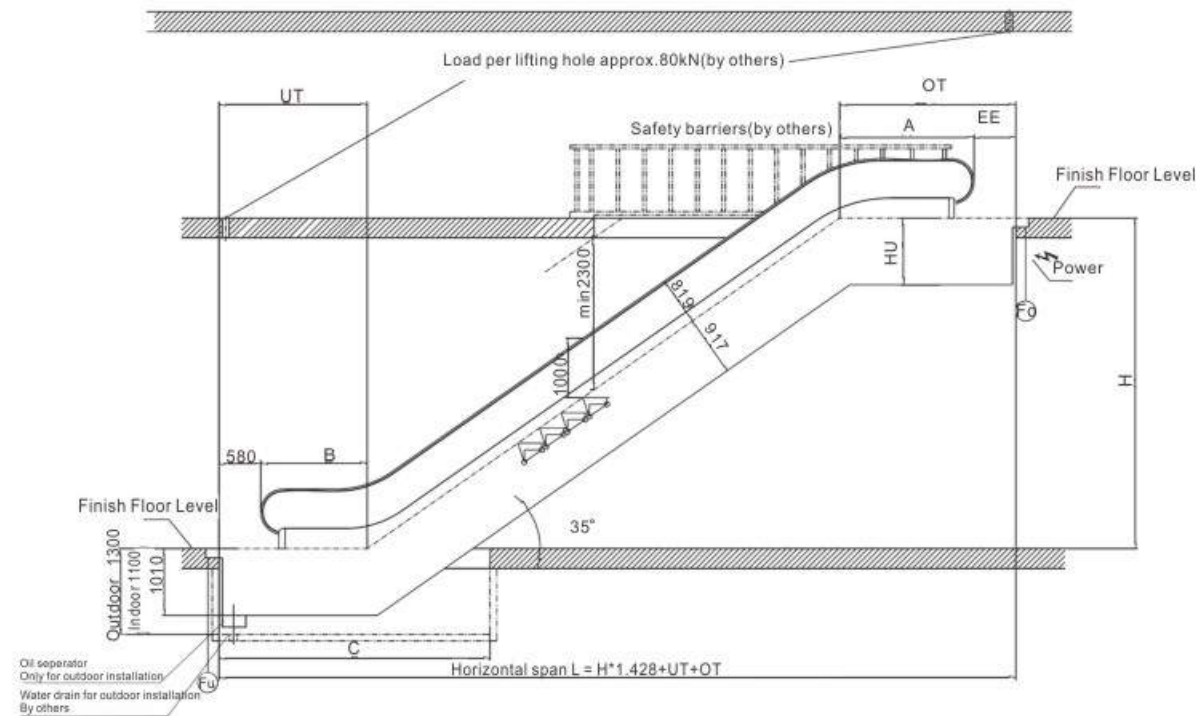
unit: mm

Type	600Step	800Step	1000Step
Step Width	600	800	1000
Handrail Width	838	1038	1238
Truss Width	1140	1340	1540
Pit Width	1200	1400	1600

MSC 30 Degree Motor Power

Motor Power(kw)	HU		Travel Height (H:mm)		
	indoor	semi-outdoor / outdoor	600Step	800Step	1000Step
5.5	1010	1010	H≤5720	H≤4440	H≤3630
7.5	1010	1010	H≤8000	H≤6310	H≤5150
11	1010	1200	-	H≤8000	H≤7500
15	1010	1200	-	-	H≤8000

Layout specifications and dimensions



MSC 35 Degree

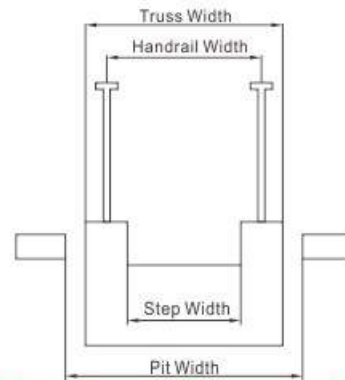
unit: mm

Horizontal step	Step Width		OT	UT	EE
2steps	1000	indoor	2663	2242	580
		semi-outdoor /outdoor	2263	2242	580
	800	indoor	2263	2242	580
		semi-outdoor /outdoor	2913	2242	830
	600	indoor	3080	2242	997
		semi-outdoor /outdoor	3080	2242	997
3steps	1000	indoor	3153	2732	580
		semi-outdoor /outdoor	3153	2732	580
	800	indoor	3153	2732	580
		semi-outdoor /outdoor	3403	2732	830
	600	indoor	3570	2732	997
		semi-outdoor /outdoor	3570	2732	997

Type	Horizontal Step	A	B	C
MSC	2steps	2083	1662	4100
	3steps	2573	2152	4600

*The 3 horizontal steps is needed if the travel height is over 6000mm.

*The standard pit depth is 1100mm. For outdoor escalator, the pit depth is 1300mm.



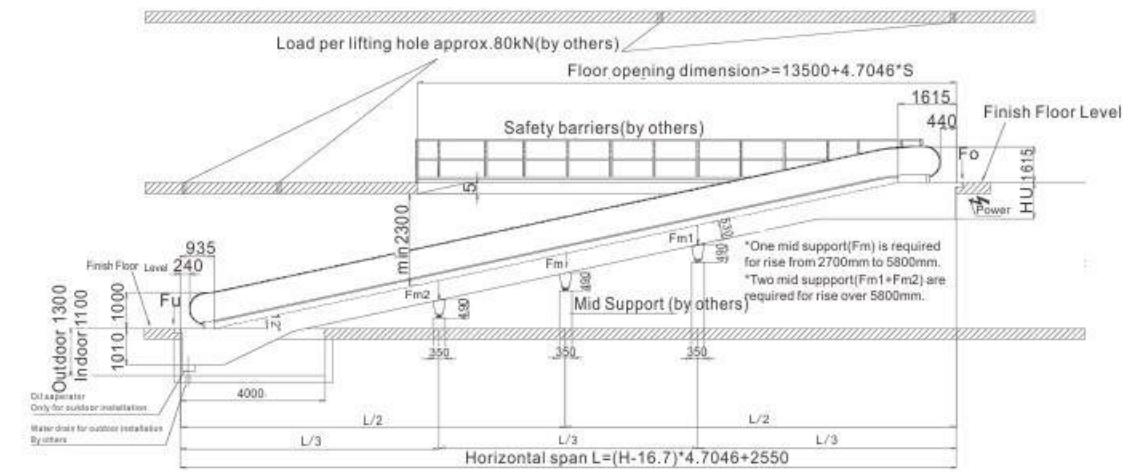
unit: mm

Type	600Step	800Step	1000Step
Step Width	600	800	1000
Handrail Width	838	1038	1238
Truss Width	1140	1340	1540
Pit Width	1200	1400	1600

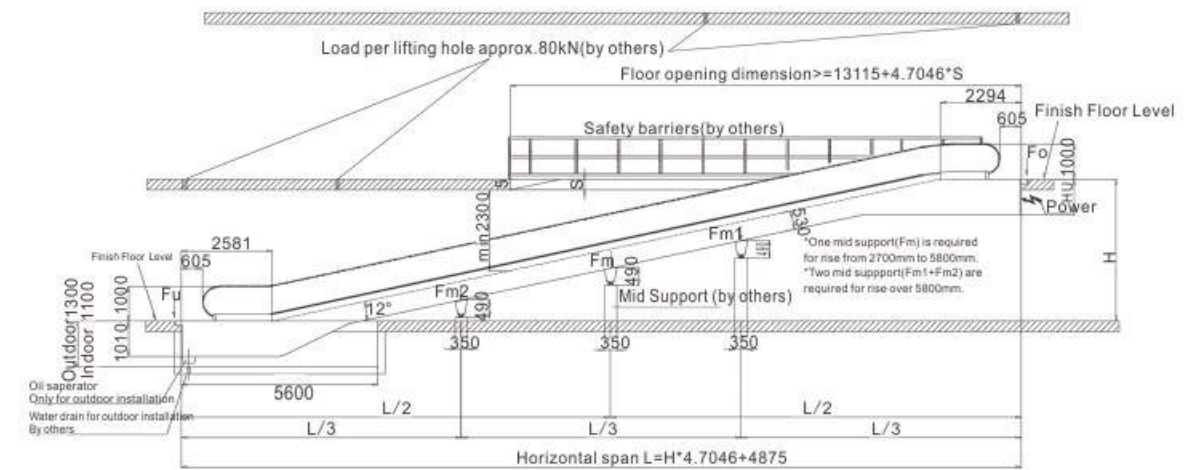
MSC 35 Degree Motor Power

Motor Power(kw)	HU		Travel Height (H:mm)		
	indoor	semi-outdoor / outdoor	600Step	800Step	1000Step
5.5	1010	1010	H≤6000	H≤4890	H≤3990
7.5	1010	1010	-	H≤6000	H≤5660
11	1010	1200	-	-	H≤6000

MAC 12Degree with upper horizontal pallet



MAC 12Degree with upper & lower horizontal pallet



unit: mm

Type	800Pallet	1000Pallet
Step Width	800	1000
Handrail Width	1038	1238
Truss Width	1340	1540
Pit Width	1400	1600

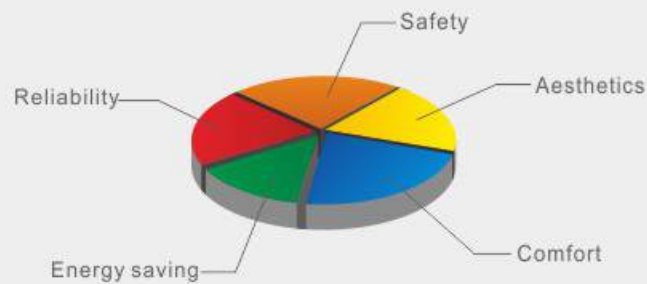
MAC 12 Degree Motor Power

Motor Power(kw)	HU		Rise (H:mm)	
	indoor	outdoor	800Pallet	1000Pallet
5.5	1010	1200	H≤3300	H≤2700
8	1010	1200	H≤4700	H≤3800
11	1010	1200	H≤6000	H≤5700
15	1200	1200	-	H≤6000

Modernization Packages

Extend your elevator and escalator's lifespan

With the average age of buildings growing steadily in many countries, property owners increasingly need to invest in modernizing their people transportation systems. At AOYAMA ELEVATOR, we're proud to work with customers worldwide to prolong their system's lifespan, safely, intelligently and cost effectively.



All of our modernization packages and upgrades have specially been designed with the idea of making these five aspects match together. Considering the highest standards on safety, reliability, energy saving, comfort and aesthetic globally is the only way to ensure the best modernization solution for your elevator.

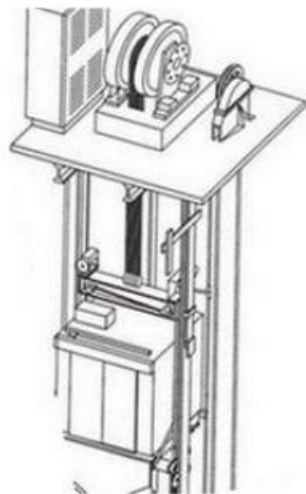
When is it time to modernize?

It's time to consider modernizing if any of these are true...

- You're unsure if the elevator complies with current code and safety standards
- People wait too long in the lobby
- Passengers complain about poor floor leveling, ride comfort or noise
- The building's use has changed since the elevator was first installed
- The elevator
 - is more than 10 years old
 - looks worn and out-of-date
 - gets overcrowded
 - shuts down often
 - has a negative effect on rental and property values

Modernization products

Base on existing device, minimum changes bring maximum upgrades. AOYAMA ELEVATOR modernization solutions offer both full modernization packages and device upgrades to match your building requirements.



System Modernization



Device Upgrade

System modernization

Keep the good quality mechanical parts and change old out-dated electrical components by new electrical control system with latest technology; upgrade main parts of the elevator, such as controller, drive and brake system, door control system. You will have the function and value of a new elevator with less expense and no big impact to your building's normal usage.



Device upgrade

Improve elevator/escalator Safety, Comfort, and Aesthetics by adding on additional devices or upgrade certain parts of existing equipment. Even you elevators are relatively new, it's also good for you to consider Device Upgrade to increase your elevators and building's value and catch up with extremely high technology development speed.



Escalator modernization

Installed as an upgrade on existing escalators, the Variable Frequency Control System adjusts the escalator's speed and output according to detected traffic flows.



1. Reliable modernization solution

The latest technology Variable Frequency Control System existing on new escalators has been specially developed as an upgrade on existing units. This guarantees the highest quality standards for your existing escalator.

2. High flexibility

The system is designed to match with existing escalator units.

3. Energy saving

In allowing the adjustment in speed according to traffic flow, the Variable Frequency Control System can reduce the energy consumption of your escalator up to 50%.

Reference Projects

Location: Japan

Project Name: NAGOYA STATION



Location: Japan

Project Name: NAGOYA Library



Location: Japan

Project Name: NAGOYA Airport
Specs: Elevator Modernization



Location: Pakistan
Project Name: Saddar Hotel 4 units
high class decoration lifts



Location: Dubai UAE
Project Name: AL MESHWAR
RESTAURANT



Location: Philippines
Project Name: 12AYMNEW-0218-PJG-
HOSPITAL



Office building in Japan
Specs: 6 units 4m/s Elevators



Commercial building in Brazil
Specs: 12 units 3m/s elevators



Location: Pakistan
Gold Tower



Residence in Brazil
Specs: 12 units Elevators



Residence in Brazil
Specs: 28 units Elevators

Reference Projects



◀ Location: Panama
Project Name: Hilton Hotel



▲ Location: Sudan
Project Name: Government Building



◀ Location: Panama
Project Name: METROMALL

▼ Location: Panama
Project Name: Canal Railway Station



▼ Location: Australia
Project Name: Ramada Hotel



▲ BOSCH Office in Ukraine



▲ Commercial building in India



▲ Four Seasons Hotel in Iran



◀ Location: India
Project Name: Government Building

Location: Ukraine
Project Name: Residence ▶▶



▼ Residence in India
Specs: 18 units Elevators



▼ iland factories Myanmar
12 units Cargo lifts



Concentration 一心不乱にする

With professional service attitude, has always been to customer demand for the service core.
専門的なサービス態度で、常に顧客需要をサービスの中心とする。

Intimate 心を張る

24 hours online service, always waiting for the safety of the customer.
24時間オンラインサービスは、クライアントの安全を待っています。

Peace of mind 安心する

Regularly send technicians to test the elevator, to provide you with the most professional maintenance.
定期的に技術者を派遣してエレベーターを検査して、最も専門的な保養を提供します。



サービス



専属サービスを作る
Create exclusive services



We have been in your side

私たちはずっとあなたのそばに

AOYAMA ELEVATOR believe connecting you and me, not only our products, more of our services, our service begins with the customer's lift shaft, until the product's useful life for life, as long as you need, we will at any time.

青山エレベーターと私は信じて接続するだけではなく、当社の製品は、我々のサービスの多くは、我々のサービスは、顧客のリフト軸で始まり、生活用製品の寿命まで、あなたが必要とする限り、我々は少しの時間である。