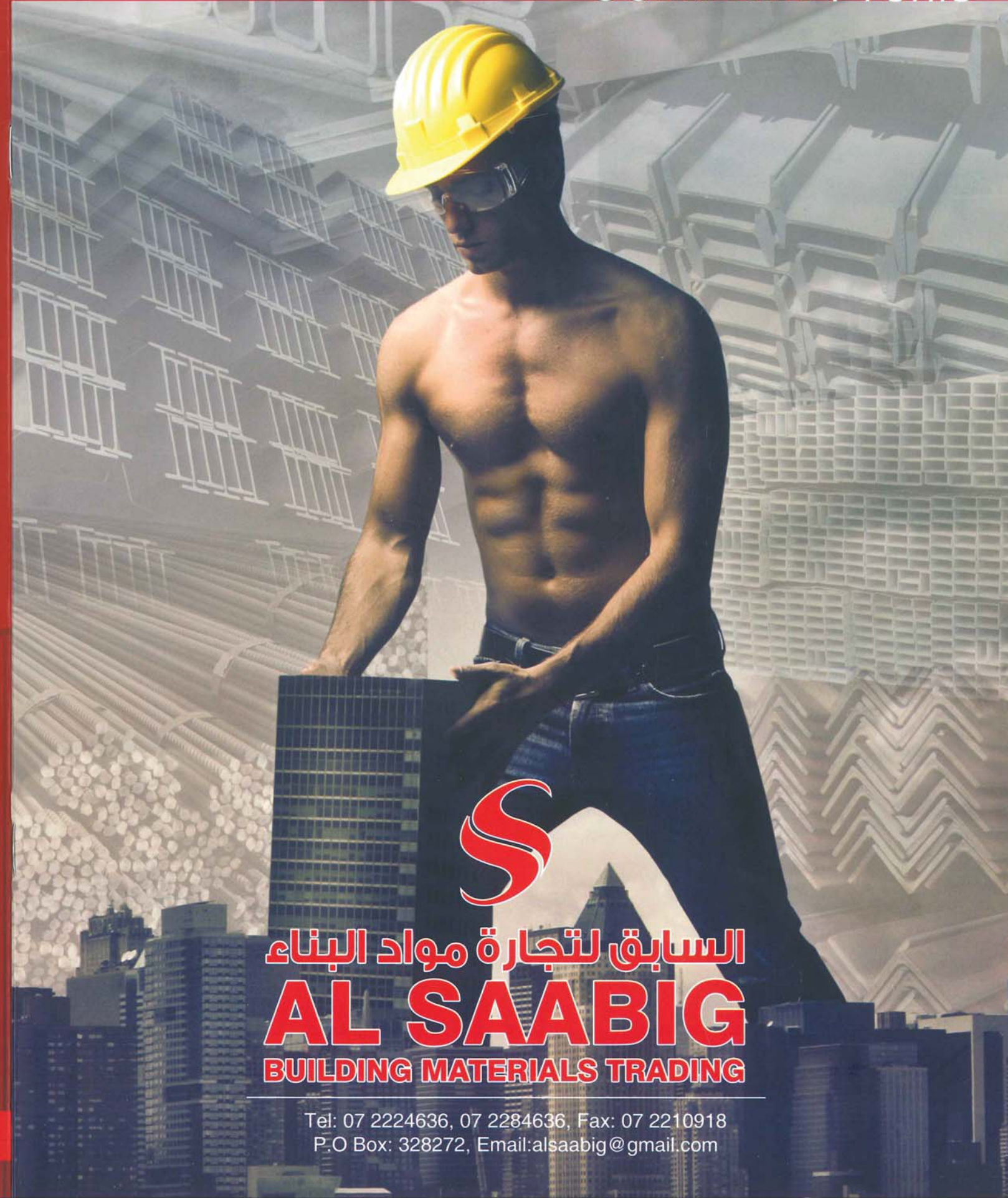
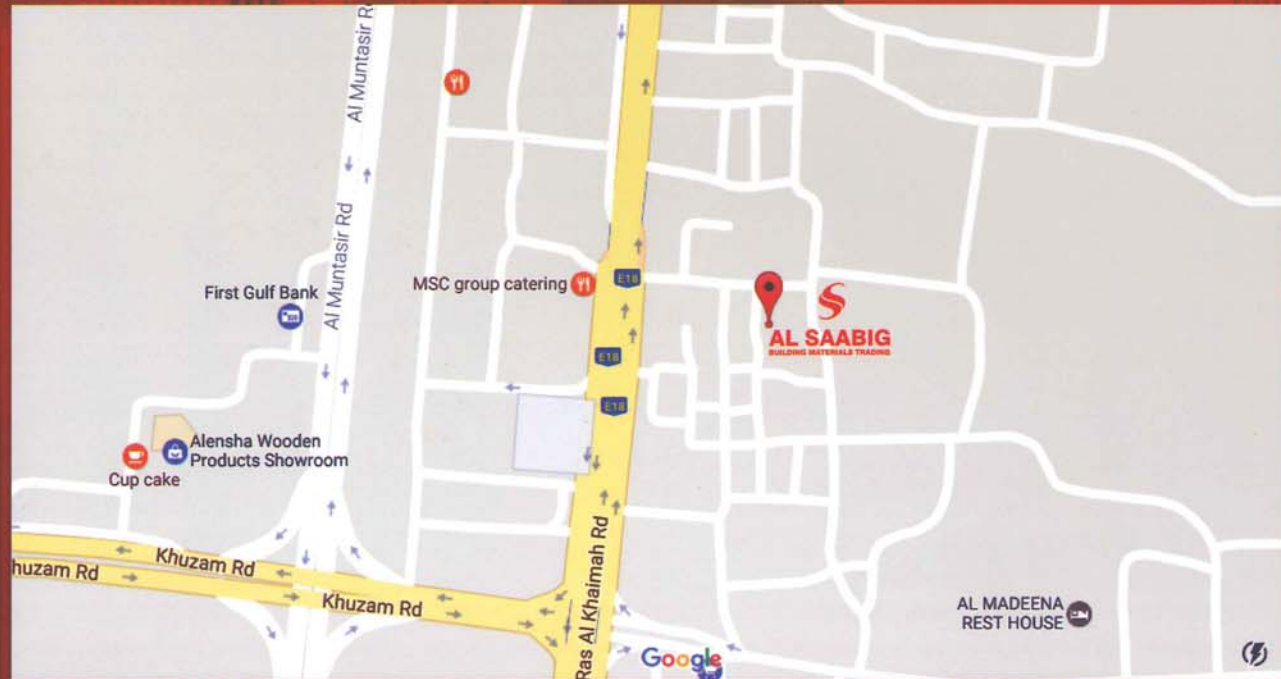


COMPANY Profile



السابق لتجارة مواد البناء  
**AL SAABIG**  
BUILDING MATERIALS TRADING



السابق لتجارة مواد البناء  
**AL SAABIG**  
BUILDING MATERIALS TRADING

Tel: 07 2224636, 07 2284636, Fax: 07 2210918  
P.O Box: 328272, Email: [alsaabig@gmail.com](mailto:alsaabig@gmail.com)

Tel: 07 2224636, 07 2284636, Mob: 050 2515057, Fax: 07 2210918, P.O Box: 328272, Email: [alsaabig@gmail.com](mailto:alsaabig@gmail.com)





# STEEL

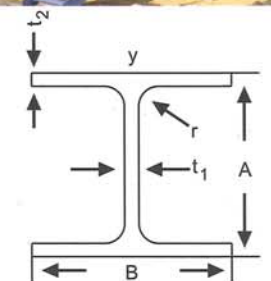
- ◆ Deformed Steel Bars
- ◆ Beams
- ◆ M.S. Plates
- ◆ M.S Angles
- ◆ Hollow Section
- ◆ GI&AL.Sheets
- ◆ Square & Round & Flat Bar
- ◆ Grating & Expanded Metal



BEAMS



Beam	Grade
IPE / IPEAA UB/UC, UPN, HEA/HEB MS CHANNEL PFC/UPN/JIS/UPE	AS PER AMERICAN & BRITISH STANDARD
As per EN 10025 S275JR/BS 4360 GR 43 A As per JIS G3101 SS 400 / ASTM A36 / EN 10025 S275 JR	





3

### HOLLOW SECTION



### GI&AL SHEETS

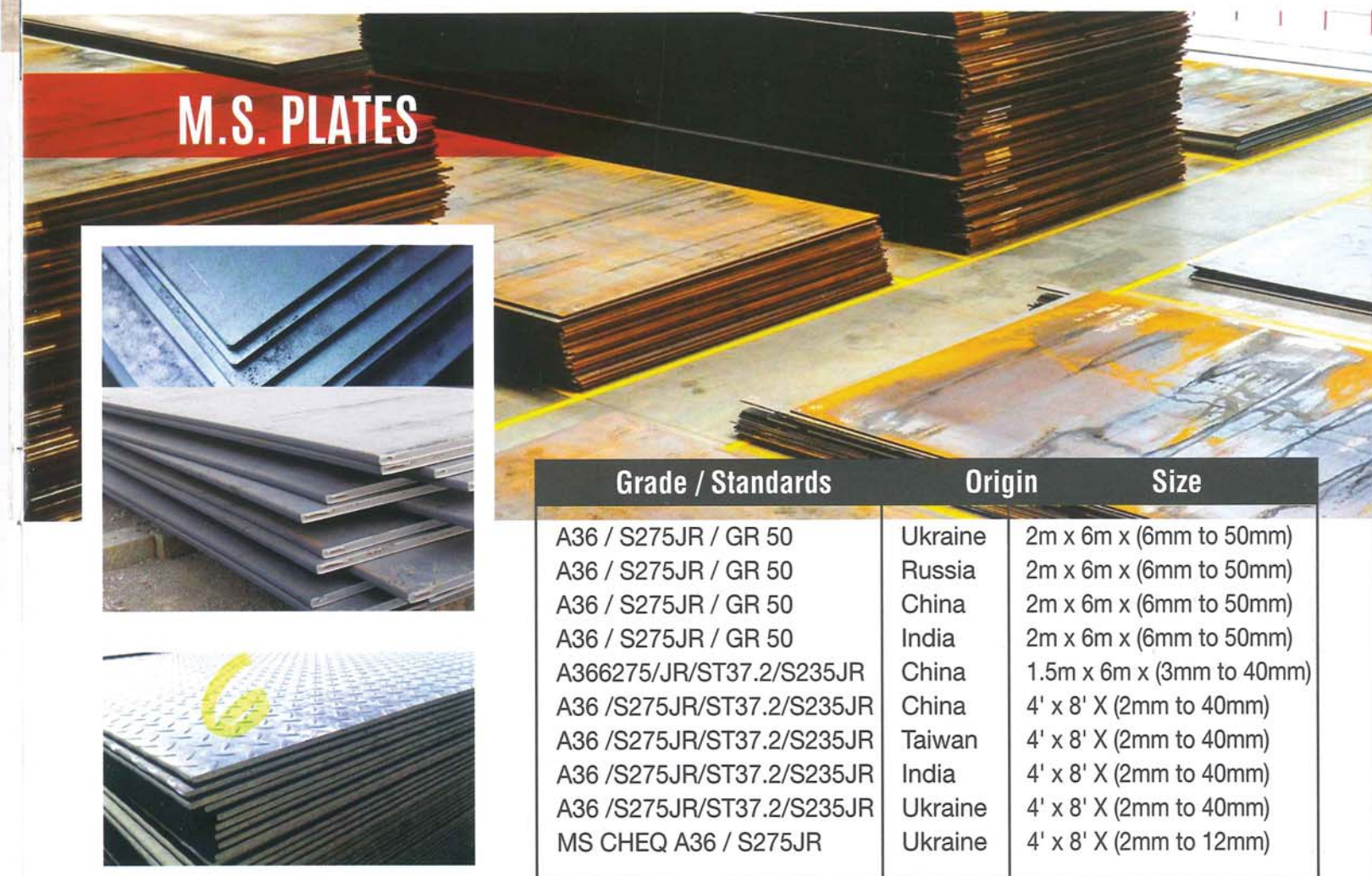


Sheet	Origin	Size
GI PLAIN SHEETS	India	4' x 8' X (0.4mm to 2.5mm)
GI CORRUGATED SHEETS	India	3' x 8' / 10' / 12' X(2834/30/G)
AL PLAIN SHEETS	India/China	4' x 8' X (0.3mm to 3mm)
AL CORRUGATED SHEETS	India/China	3' x 8' / 10' / 12' X 0.4MM

### GI & MS PIPES



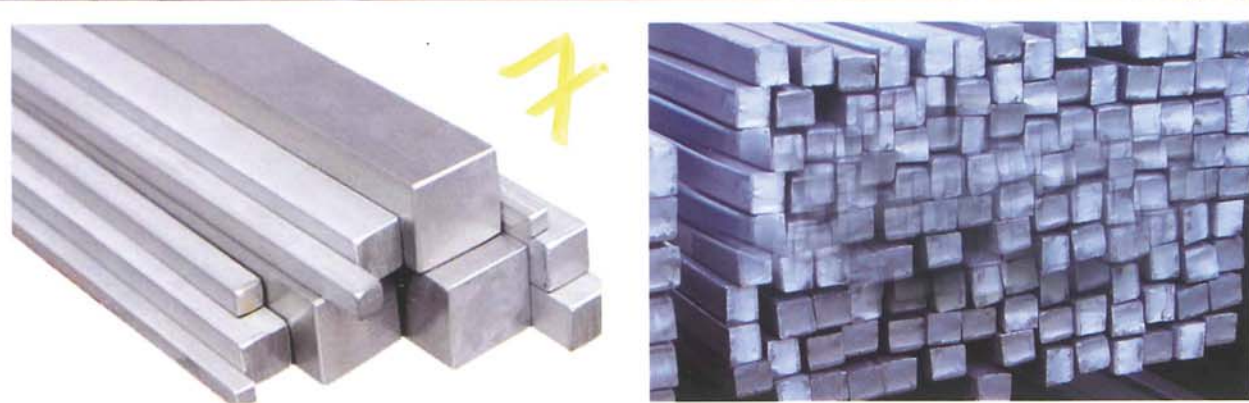
### M.S. PLATES



Grade / Standards	Origin	Size
A36 / S275JR / GR 50	Ukraine	2m x 6m x (6mm to 50mm)
A36 / S275JR / GR 50	Russia	2m x 6m x (6mm to 50mm)
A36 / S275JR / GR 50	China	2m x 6m x (6mm to 50mm)
A36 / S275JR / GR 50	India	2m x 6m x (6mm to 50mm)
A366275/JR/ST37.2/S235JR	China	1.5m x 6m x (3mm to 40mm)
A36 /S275JR/ST37.2/S235JR	China	4' x 8' X (2mm to 40mm)
A36 /S275JR/ST37.2/S235JR	Taiwan	4' x 8' X (2mm to 40mm)
A36 /S275JR/ST37.2/S235JR	India	4' x 8' X (2mm to 40mm)
A36 /S275JR/ST37.2/S235JR	Ukraine	4' x 8' X (2mm to 40mm)
MS CHEQ A36 / S275JR	Ukraine	4' x 8' X (2mm to 12mm)



## SQUARE BAR



Specification - JIS G3101-SS 400 / ASTM A36 / EN 10025 S275 JR

## ROUND BAR



## FLAT BAR



Specification - JIS G3101-SS 400 / ASTM A36 / EN 10025 S275 JR

## ABOUT THE COMPANY

Al saabig Building Materials Trading , is one of the importer , exporter and stockist of Structural Steel and Building Materials in the United Arab Emirates. We are located in the Al Juwis, Al Nakheel, Ras Al Khaimah, P.O No:328272 At Al Saabig, we stock Flat Products such as Mild steel Plain Sheets / coils/chequered Sheets in sizes 4'x8'/5'x 20/ 2mx6m / 2.5m x 8m / 3.05x12m, Galvanized Sheets /Coils , Cold Rolled Sheets /Coils and Aluminium Plain / Chequered Sheets, as per your requirement. We also stock Long products such as Universal Beams, Columns, Channels, H & I Beams HEA, HEB, IPE, IPE-AA, UPN, UPE, M.S. Angles, Flat Bars, Square Bars,Hexagonal Bars, Shafting Bars, Round Bars and other allied items.

It will be our pleasure to welcome your enquiry for any of the above products /sizes you may require, which will receive our attention in executing the order to your utmost satisfaction in terms of quality, price and delivery.



## DEFORMED STEEL BARS



Grade / Standards	Origin	Size
BS 449GR460B Cares Approved	Turkey	8mm-40mm
ASTM A615/GR 60	Turkey	8mm-32mm
BS 4449:2005GRB500B	Qatar	8mm-40mm
BS 449GR500B	RAK	8mm-32mm
BS 449GR460B	ESI	8mm-40mm

## M.S ANGLES



Grade / Standards	Origin	Size
A36 /S275JR/ST37.2/S235JR	China	25mm to 100mm
A36 /S275JRST37.2/S235JR	Turkey	25mm to 100mm
A36 /S275JR/ST37.2/S235JR	KSA	25mm to 100mm



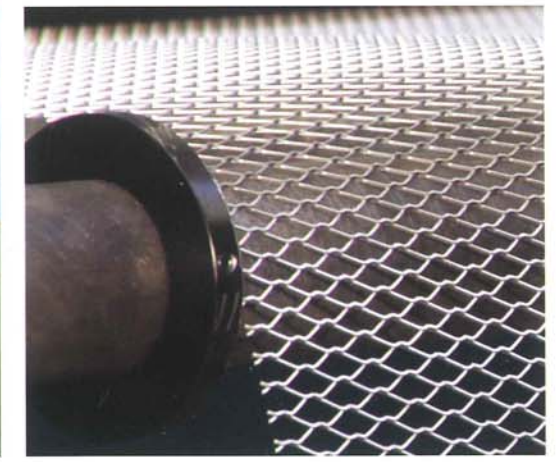
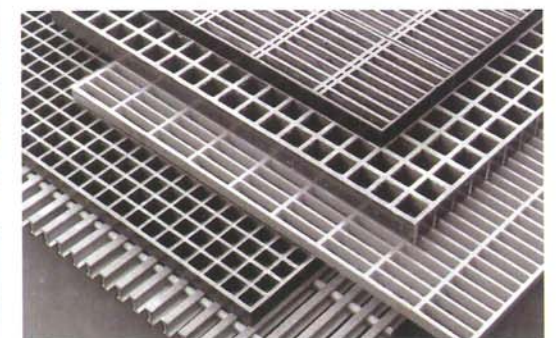
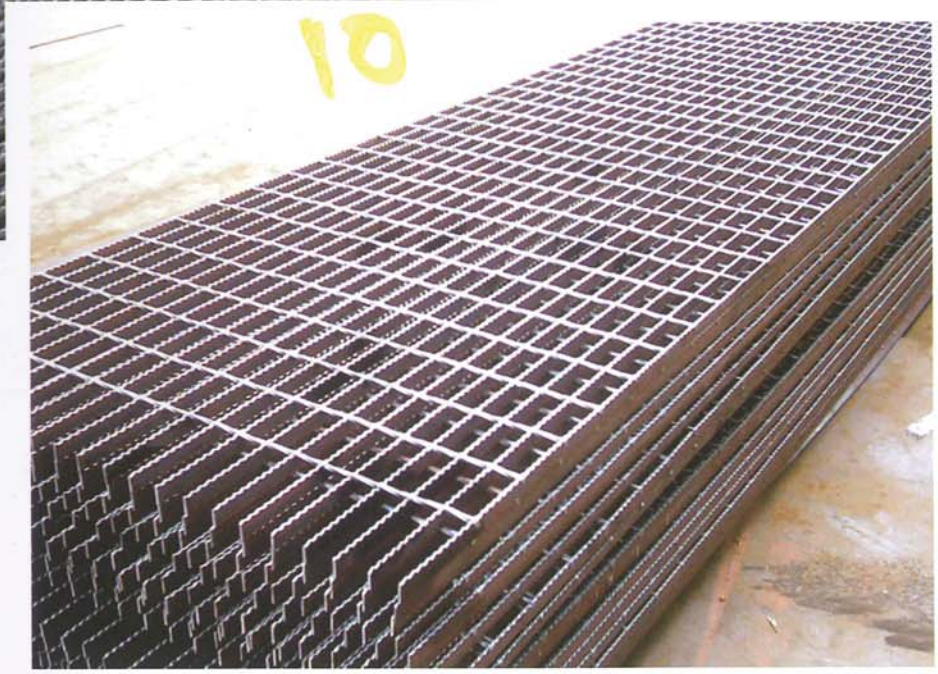
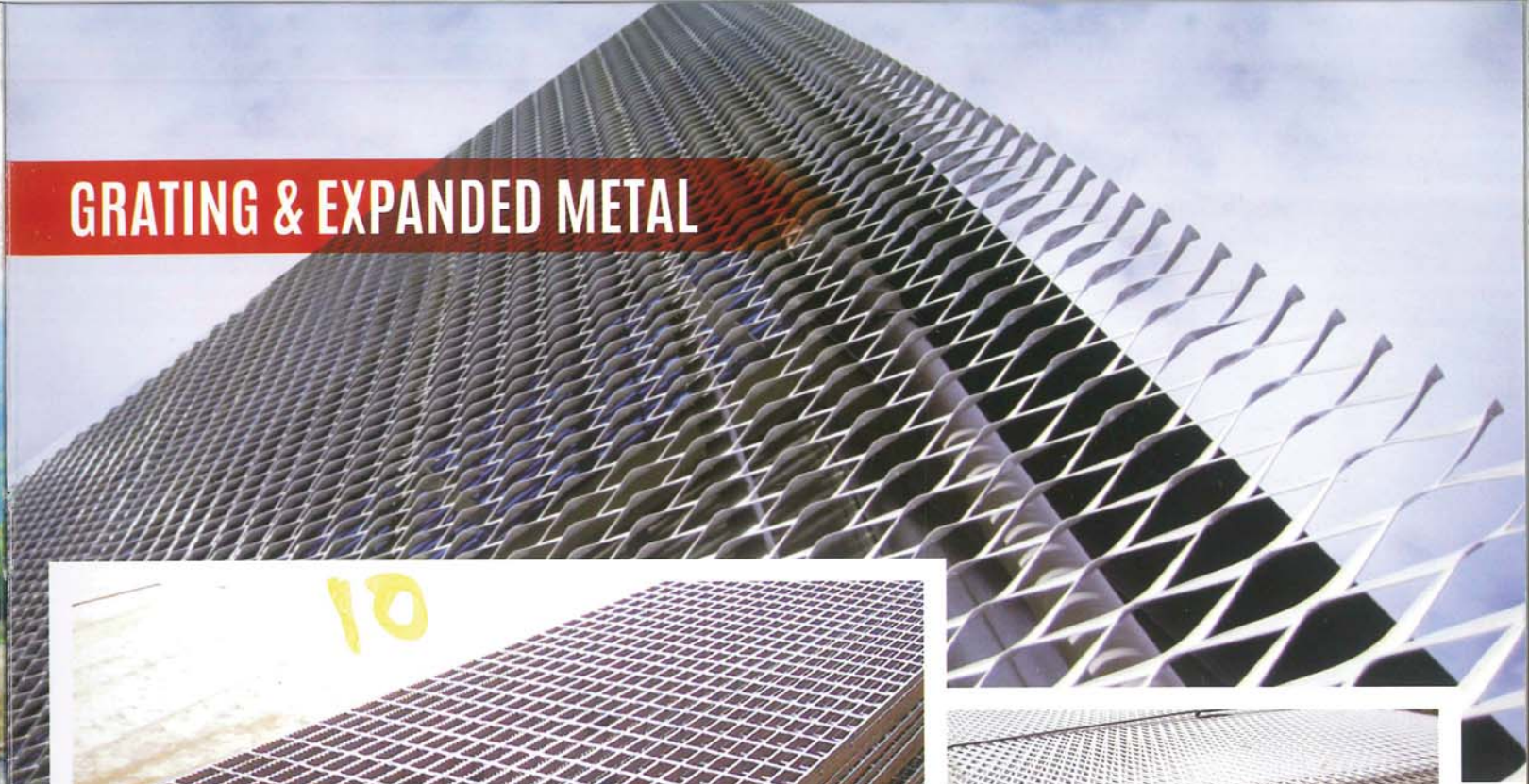
# PROPS



## Steel Pipe Support IL3 (Orange Color)

MAXIMUM LENGTH	3900mm
MINIMUM LENGTH	2520mm
INNER TUBE	48x2(th) mm
OUTER TUBE	60x2(th) mm
CLOVER TYPE TOP & BASE PLATE	120x120 x5(th) mm
NUMBER OF HOLES	12 each
GROSS WEIGHT	About 12kg / piece
SAFETY LOAD	Maximum length 1.30MT Minimum length 1.9MT
ADJUSTABLE LENGTH	125mm

# GRATING & EXPANDED METAL



## Specification

As per EN10025 S275JR / BS 4360 GR 43 A/ASTM36  
As Per BS1449 PART 11983- HR2 / G3351 STD TYPE