

*Building Your Visions, Creating Reality...*

## WHITE METAL WATERPROOFING SYSTEM



**WHITE METAL**  
CONTRACTING L.L.C

[www.whitemetalco.com](http://www.whitemetalco.com)





**WHITE METAL**  
CONTRACTING L.L.C

**WHITE METAL CONTRACTING LLC.** is the most reputed firm in UAE carrying out works of polyurethane chemicals and applicator of Sprayed Polyurethane Foam System, licensed by the Ministry of Industry and Commerce, Ajman, U.A.E

We have strong background and expertise in the field of polyurethane spray foam system. Our installation teams provide quick application, courteous service whilst always maintaining excellent quality standards. We provide 10 years warranty and after sales service.

Our spray polyurethane foam can be applied effectively on pipes, tanks and roofs to get the right heat insulation U-value and complete waterproof.

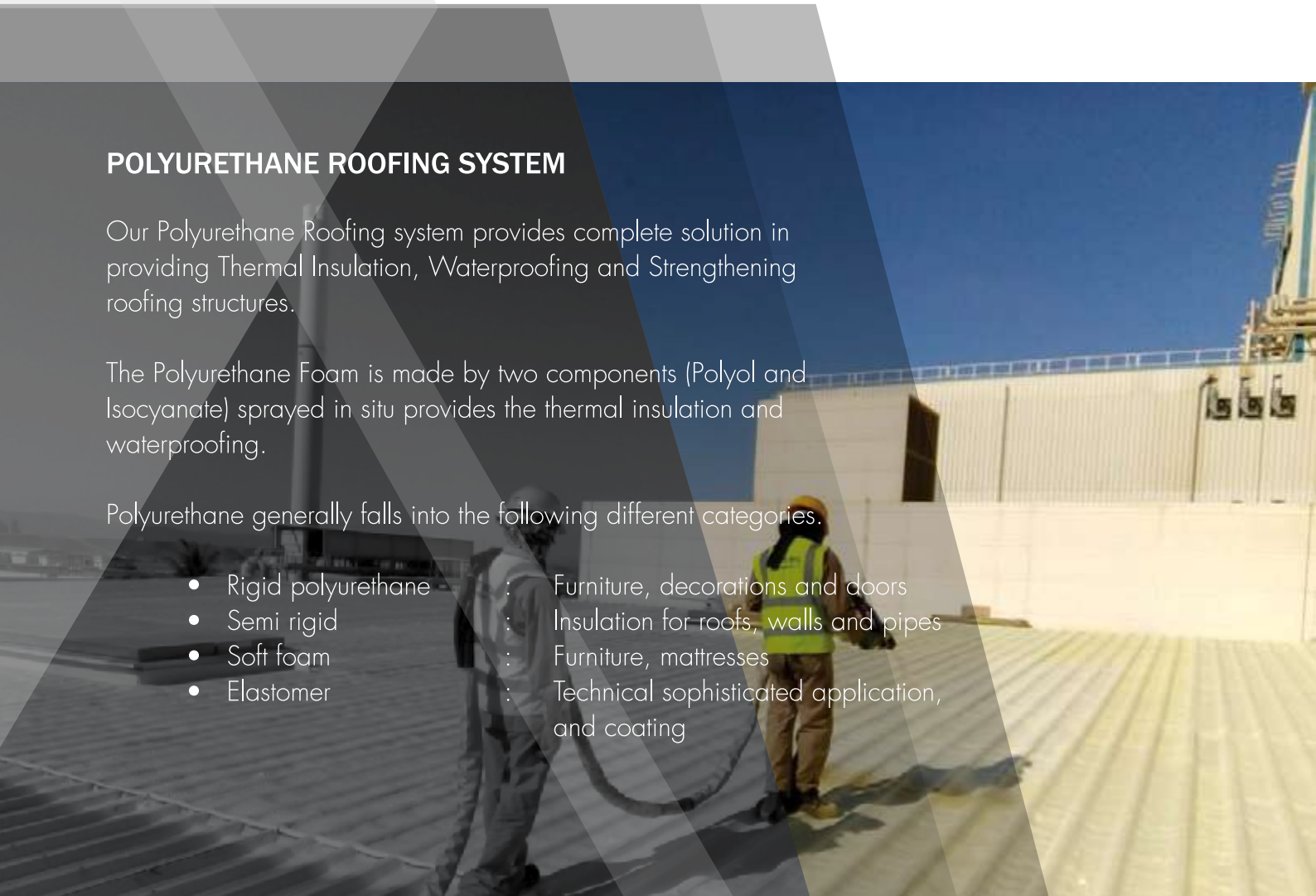
## POLYURETHANE ROOFING SYSTEM

Our Polyurethane Roofing system provides complete solution in providing Thermal Insulation, Waterproofing and Strengthening roofing structures.

The Polyurethane Foam is made by two components (Polyol and Isocyanate) sprayed in situ provides the thermal insulation and waterproofing.

Polyurethane generally falls into the following different categories.

- Rigid polyurethane : Furniture, decorations and doors
- Semi rigid : Insulation for roofs, walls and pipes
- Soft foam : Furniture, mattresses
- Elastomer : Technical sophisticated application, and coating



Polyurethane Roofing system consists application of two individual products:

- Polyurethane sprayed (SPF) in-situ and applied to the roofs.
- Elastomeric acrylic rubber (coating) for protection of the polyurethane foam and extra Waterproofing tightness

### **ADVANTAGES OF POLYURETHANE ROOF SYSTEM**

- Lightweight
- Thermal Insulation
- Quick and Easy Application
- Easy Maintenance
- No Joints
- Sound Proof
- Strengthening of existing structure
- Less HAVC consumption upto 80%
- Fire Rated
- High Durability up to 20 Years







**WHITE METAL**  
CONTRACTING L.L.C



## COMBO ROOF WATERPROOFING SYSTEMS

White Metal has mastered a unique roofing system the COMBO ROOF WATER PROOFING SYSTEMS, a three in one solution to meet your waterproofing needs, provide thermal insulation and give an impeccable finish to your roof. This first of a kind PU foam innovation (certified by Dubai Central Laboratory, DCL) is the best technically proven fast curing, joint free water proofing and thermal insulation solution for your roof. Backed by a 25 year warranty from White Metal and conformity to all UAE regulations enhance the value offered by COMBO ROOF WATER PROOFING SYSTEMS

Adherence to state of the art technology in the application process, employment of skilled & trained manpower under the supervision of qualified & experienced engineers provides you with a zero leak roof in the shortest time. Our commitment to quality and our reliance on systems & process assures a complete solution for your roof.

## ADVANTAGES OF COMBO ROOF WATER PROOFING SYSTEMS

- 25 year warranty
- 100% guaranteed water proofing
- Most efficient thermal insulation resulting in lesser electricity bills
- Multilayer Waterproofing
- Thermal shock resistance
- Superior fast curing
- State of the art spray technology
- Perfect finish
- Quick and timely execution and handing of projects
- Easy repair & maintenance

## **POLYUREA WATER PROOFING SYSTEM**

Polyurea Water Proofing System is a two-component, rapid curing and elastomeric coating. It is designed to be sprayed with high pressure plural component spray equipment. Thickness of the lining will vary depending on the application, typically from a minimum of 30 mils up to unlimited thickness.

Polyurea Water Proofing System industrial lining for tough application spray conditions like Outdoor application sites where water, humidity or low temperature conditions exist and are tough to eliminate, Floor and wall protection in industries such as food processing, food storage, veterinary, production area and laboratories, Secondary containment as a monolithic, impermeable lining for industrial plant, agriculture, and petrochemical applications, Spray-on application creates a monolithic, seamless lining that conforms to any shape and size, Can withstand vehicle forklift traffic and heavy loads with proper thickness build, Excellent for waterproofing such as shower stalls and pool linings and Elastomeric properties allow for application to surfaces subject to vibration, expansion, contraction, movement, flexing, abrasion and impact.

## **ADVANTAGES OF POLYUREA WATER PROOFING SYSTEM**

- Robust application window with ability to spray at low temperature and high humidity
- High physical properties including tensile, tear, and elongation properties
- Excellent water proofer
- Excellent leveling properties
- Excellent abrasion and impact resistance
- Excellent chemical resistance and corrosion resistance
- Reduce noise from vibration and impact
- Bonds virtually all substances of any dimension, including metals, woods, concrete, fiberglass and geotextiles
- Stable from -400 to 2300 F (-400 to 100C)
- 100% solids, zero VOCs, no solvents



## **WATERPROOFING FOR WET AREA**

This application is for any wet area under tiling which will be in direct contact and reputable using of water such as kitchen, bathroom, and others in residential or commercial buildings in either on new building or for repairing old ones. In both cases, a waterproofing system needs to be applied under tiling (the wet area) in order to protect the concrete and prevent any water leakage.

## **PRODUCT SOLUTION**

Different systems are available such as;

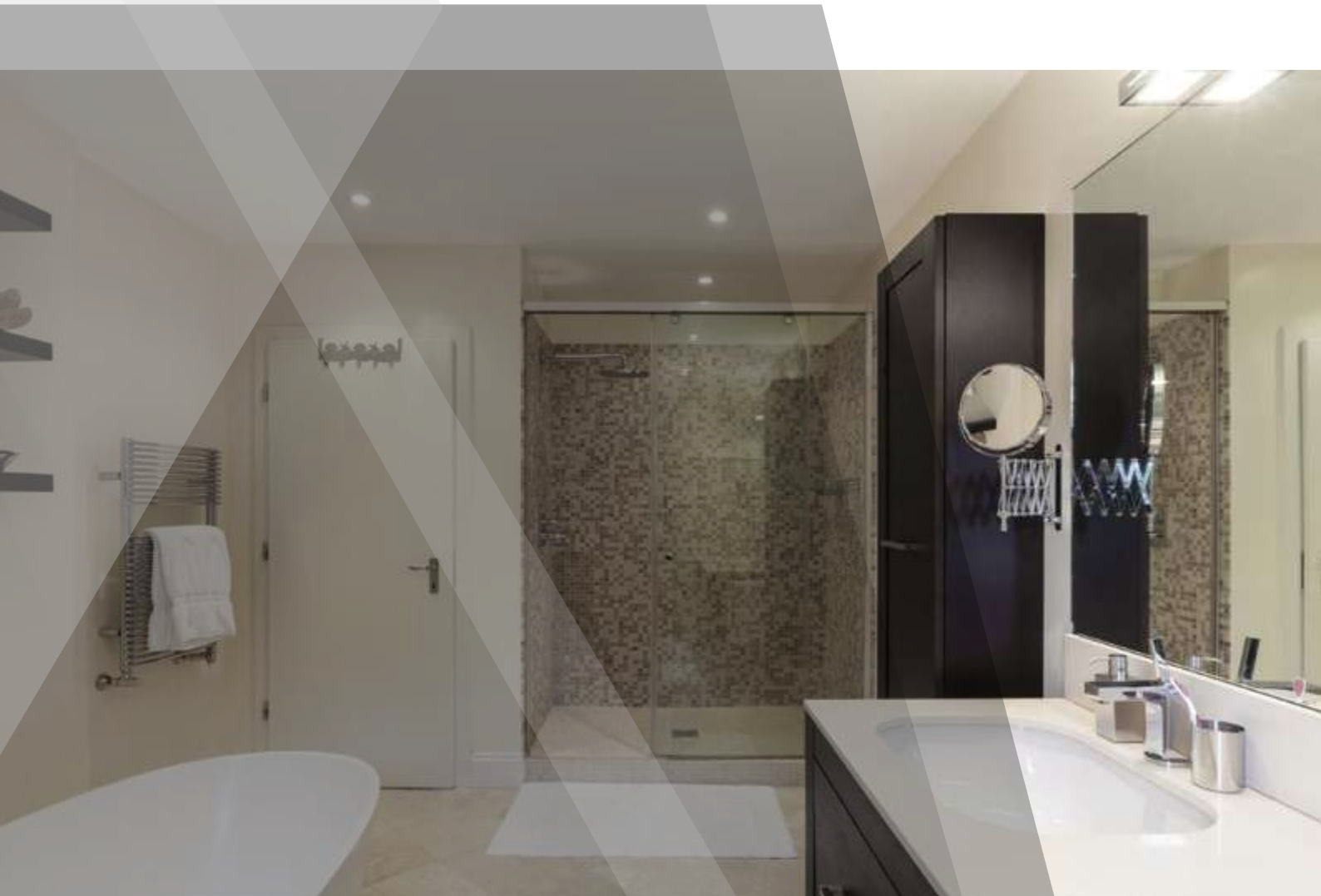
Polyurea based Waterproofing,

Polyurethane Waterproofing

Bituminous Sheet based Waterproofing

Acrylic based Waterproofing

Epoxy-based Waterproofing



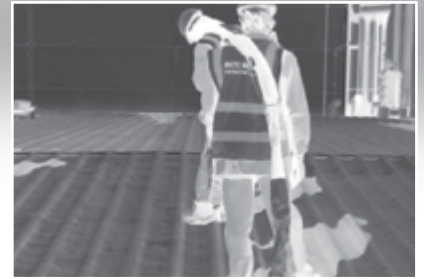
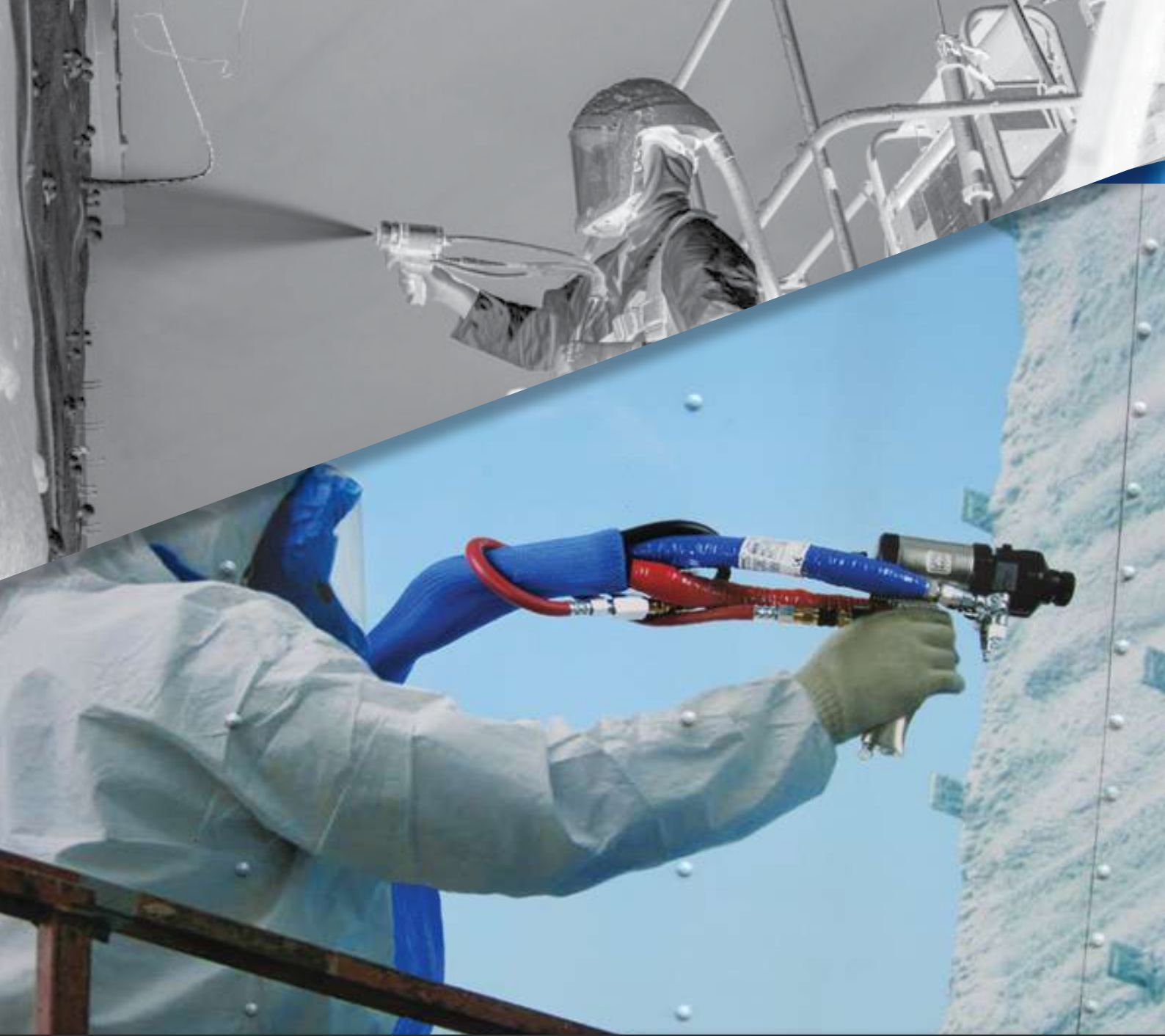


## WHY CHOOSE WHITE METAL ?

WHITE METAL is committed to helping its clients reach their goals, to personalising thier event experience, to providing an innovative environment and to making a difference. To provide quality services to clients using the best technology availableat fair market competitive prices.

- Efficient project supervision -ensuring quality and timeliness
- Modernization in service and equipment's
- Used Latest Techology and Machineries
- Elegant in products and service
- Our professional and experienced teams are dedicated to providing you with impeccable execution of work,
- High-quality customer service and guaranteed satisfaction.
- After Sales service like quick response and periodic maintenance during our warrenty period





## WHITE METAL CONTRACTING LLC

PO Box: 13451, Ajman - UAE

Tel : +971 6 742 92 29

Email : sales@whitemetalco.com

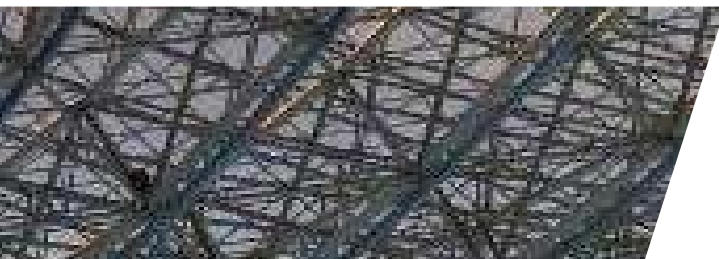
الابيض للمقاولات المعدنية ذ.م.م

ص.ب ١٣٤٥١، عجمان، الإمارات

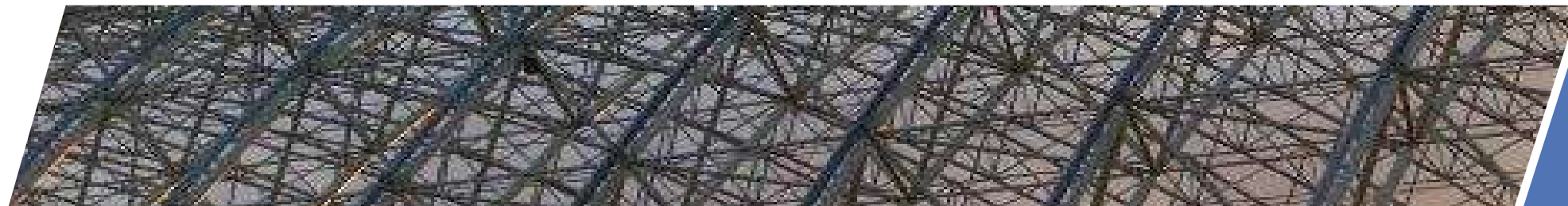
هاتف : ٠٠٩٧١٦٧٤٢٩٢٢٩

[www.whitemetalco.com](http://www.whitemetalco.com)





[www.whitemetalco.com](http://www.whitemetalco.com)



ALUMINIUM COMPOSITE CLADDING | SANDWICH PANEL CLADDING | ALUMINIUM & GLASS  
WATER PROOFING | ROLLING SHUTTER & DOCK LEVELER | STEEL STRUCTURAL BUILDINGS  
FIRE RATED STEEL DOOR | MEZZAINE FLOOR | EPOXY FLOORING



Building your visions. *Creating reality.*





Find out more about why you should choose us as your contracting partner..

The White Metal Contracting L.L.C, has been around for a long time, and in that time has built a worthy reputation as a business of excellence in the field of building and construction contracting services. You will have already read about our business services which we offer to customers throughout the UAE. Now you can find out all the particulars of our company.

This section provides detailed information about the people we employ and the quality standards we set ourselves, which we are proud to say are incredibly high.





## Water proofing

The repair and maintenance of metal roofs has never been easier or more effective. Using on roof seams, fasteners, and other roof joints water tight sealing can be accomplished effectively and economically. Simply apply in a heavy bead over end laps and vertical seams, or in a dollop over defective fasteners is a brush-grade mastic with unique physical properties. Unlike most asphalt or acrylic coatings, will not crack or become brittle over numerous freeze/ thaw cycles. This unique material actually stretches and recovers to bridge roof joints in which thermal movement can be expected. With 1500 PSI Tensile Strength and 600% Elongation capabilities, can single handedly tackle most metal repairs is typically stocked and purchased as white in color. Clear is also stocked for skylight panel restoration. White is U.V. Stable but clear PEB Water Proofing is only moderately U.V. Stable.



## Epoxy Flooring

We have been installing commercial flooring coating systems for over a decades. We can complete any type of epoxy flooring project, including large scale flooring projects that most epoxy flooring contractors will not or cannot undertake. We also specialize in repairing botched epoxy flooring system that have failed due to improper surface preparation or installation.

Our experience ranges from residential to industrial and commercial flooring such as Aviation Hangers, Public Schools and Gymnasiums, Correctional facilities, Hospitals, Manufacturing Facilities, Factories, Stores and government buildings etc.





## Roof Cladding

We specialise in industrial and commercial roof and wall cladding on new build projects and the re-sheeting and re-cladding and refurbishment of existing buildings.

From early design through to construction we are able to offer a complete design, supply and installation service of a range of systems such as composite panels, built-up systems, roof decking, standing seam roofs.

We offer services in emergency repairs, investigation, survey and reports, a full re-roofing service on installations of all sizes and also cleaning and maintenance of roofs and gutters, which can be undertaken as preventative maintenance or reactive maintenance. We offer an unrivalled choice.





## Fire Rated Doors

We specialised in Manufacturere and Installer a complete selection of performance- and safety-tested commercial and industrial Sectional Overhead Doors, Fire Exit Doors, Dock Leveler, Rolling Shutter etc. ,

We manufacture a wide array of styles to meet your business needs, from insulated and non-insulated doors for internal and external applications to high-performance, sectional-steel and fire-rated doors.





## Aluminium & Glass

White Metal Contracting L.LC, local, supply and Installing of Aluminium Windows and Aluminium Doors, supporting the community for many years . We specialise in Double Glazing, Windows, Kitchen Cabinet, Wall Partitions, Spider Glass Fitting, Thermal Efficient Aluminium Frames, Doors etc.

Our fabricators and glaziers are highly qualified in fabricating frames and installing glass to your specifications. Aluminium comes in either powdercoated or anodised finish and our glass can also be toughened to provide strength and protection.

## Fire Rated Aluminium (ACP) Cladding

We are specialist for Supplier, Fabricator and Installer of Aluminium Composite Panels the construction industry. Aluminium Composite Panels (ACP) are a simple but extremely versatile product concept developed to provide a façade material with a host of advantages for architects and building owners alike.

Our objective is to support your creativity and design freedom, from the initial concept through to trouble-free installation.