

EMH Electric Wire Rope Hoist reeving 4/1

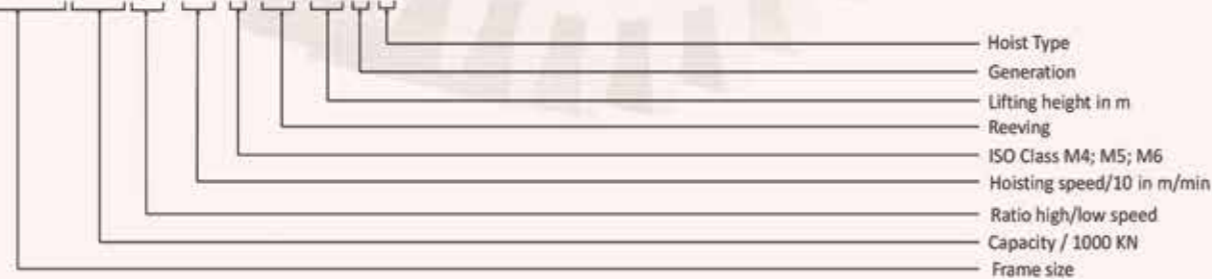
Selection table 400 - 415V 50Hz.

Hoist Type	Hoist Type 4/1	Capacity (T)			ED%	D/h	Hoist Height (m)	Hoist Speed (m/min)	Hoist Motor (KW)
		M4	M5	M6					
832	EMH825L6-426.41.xx1.y			2.5	50	300	6, 10, 15	4.2 / 0.7	2.5 / 0.37
	EMH832L6-425.41.xx1.y		3.2		40	240	6, 10, 15		
	EMH825L6-636.41.xx1.y			2.5	50	300	6, 10, 15	6.3 / 1.0	4 / 0.6
	EMH832L6-635.41.xx1.y		3.2		40	240	6, 10, 15		
1050	EMH1040L6-416.41.xx1.y			4	50	300	6, 10, 15	4.1 / 0.7	4/0.6
	EMH1050L6-415.41.xx1.y		5		40	240	6, 10, 15		
	EMH1032L6-636.41.xx1.y			3.2	50	300	6, 10, 15		
	EMH1040L6-635.41.xx1.y		4		40	240	6, 10, 15	6.3 / 1.0	6.1 / 1
	EMH1050L6-634.41.xx1.y	5			40	180	6, 10, 15		
2063	EMH2050L6-416.41.xx1.y			5	50	300	6, 10, 15	4.1 / 0.7	4.9/0.8
	EMH2063L6-415.41.xx1.y		6.3		40	240	6, 10, 15		
	EMH2040L6-806.41.xx1.y			4	50	300	6, 10, 15		
	EMH2050L6-805.41.xx1.y		5		40	240	6, 10, 15	8.0 / 1.3	9.8 / 1.6
3100	EMH2063L6-804.41.xx1.y	6.3			40	180	6, 10, 15		
	EMH3080L6-406.41.xx1.y			8	50	300	6, 10, 15	4.0 / 0.7	7.6 / 1.2
	EMH3100L6-405.41.xx1.y		10		40	240	6, 10, 15		
	EMH3063L6-636.41.xx1.y			6.3	50	300	6, 10, 15		
3125	EMH3080L6-635.41.xx1.y		8		40	240	6, 10, 15	6.3 / 1.0	12.5 / 2
	EMH3100L6-634.41.xx1.y	10			40	180	6, 10, 15		
	EMH3100L6-406.41.xx1.y			10	50	300	6, 10, 15	4.0 / 0.7	9.5 / 1.5
	EMH3125L6-405.41.xx1.y		12.5		40	240	6, 10, 15		
5160	EMH5125L6-406.41.xx1.y			12.5	50	300	6, 10, 15	4.0 / 0.7	12.5 / 2
	EMH5160L6-405.41.xx1.y		16		40	240	6, 10, 15		
	EMH5100L6-506.41.xx1.y			10	50	300	6, 10, 15		
	EMH5125L6-505.41.xx1.y		12.5		40	240	6, 10, 15	5.0 / 0.8	16 / 2.6
	EMH5160L6-504.41.xx1.y	16			40	180	6, 10, 15		
5200	EMH5200L6-404.41.xx1.y	20			40	180	6, 10, 15*	4.0 / 0.7	16 / 2.6
6250	EMH6160L6-346.41.xx0.y			16	50	300	6, 10, 15		
	EMH6200L6-345.41.xx0.y		20		40	240	6, 10, 15	3.4 / 0.5	16 / 2.6
	EMH6250L6-344.41.xx0.y	25			40	180	6, 10, 15*		
7400	EMH7220L6-396.41.xx0.y			22	50	300	6*, 10*, 15*	3.9 / 1.0	20/5
	EMH7270L6-395.41.xx0.y		27		40	240	6*, 10*, 15*		
	EMH7250V-496.41.xx0.y			25	50	300	6*, 10*, 15*	4.9 - 0.8 VFD	38 VFD
	EMH7320V-495.41.xx0.y		32		40	240	6*, 10*, 15*		
	EMH7400V-494.41.xx0.y	40			40	180	6*, 10*, 15*		

In grey :Please check availability in stock

Replace "y" by hoist type : E,D,C,Z,N,SU, CM
 Replace "xx" by available hoisting lift
 "*" Not available with type "E"

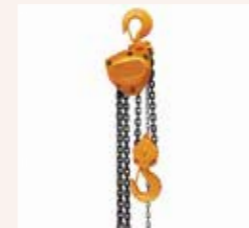
EMH2063L6-41 5 41 100 E



Wire Rope Hoist
 (From 1Ton to 300Ton capacity)



Electric Chain Hoist
 (From 100Kg to 25Ton capacity)



Manual Chain Hoist
 (From 50Kg to 10Ton capacity)



Explosion Proof Hoist
 (From 50kg to 30Ton capacity)



Jib Crane
 (From 50Kg to 10Ton capacity)



Single Girder EOT Crane
 (From 100Kg to 35Ton capacity)



Double Girder EOT Crane
 (From 1Ton to 300Ton capacity)



Gantry Crane
 (From 1Ton to 150Ton capacity)



Underslung Crane
 (From 100Kg to 15Ton capacity)



Transfer Trolleys
 (From 1Ton to 150Ton capacity)



Pallet Trucks
 (from 10kg to 5Ton capacity)



Pig Trolleys
 (From 500Kg to 10Ton capacity)



Scissor Lifts
 (From 100Kg to 5Ton capacity)



Manual Gantry Cranes
 (From 100Kg to 5Ton capacity)



Manual Operated Overhead
 (From 100Kg to 5Ton capacity)



Material Lift / Cage Lift
 (From 100Kg to 5Ton capacity)



Racking Systems / Warehousing solutions



Valley City, OH is the site of the EMH corporate headquarters and manufacturing plant. Our modern facility provides us with plenty of production space and room for expansion, making EMH readily adaptable to the needs of 21st century industry.



QMH CRANES

EXPERTS IN MATERIAL HANDLING SOLUTIONS



Quality Material Handling Equipments or QMH, An ISO-9001: 2008 organization

managed by Qualified Professionals and Experienced Engineers with expertise in the field of various material handling equipment's. We are expert in Design, Manufacture, Supply, Installation, Service and Maintenance of all line of overhead handling equipment's from 10kg to 300Ton capacity.

Our Major Approvals

We are Approved and done projects with below some of the major organizations in the region,

- Dubai Airport
- Road And Transport Authority (RTA)
- UAE Armed Forces
- Dubai Government
- Nuclear Power Plant , Abu Dhabi
- Cooling Plant's in Dubai
- Saudi Aramco, Saudi Arabia
- PDO, Oman
- Emirates Group





(Quality Material Handling Equipments)

EMH sets the standard for wire rope hoists!



MONORAIL HOIST



**Monorail "E" Models
Capacity upto 25T**

- **Model "E"** : Monorail low headroom for single girder cranes
- **And on request :**
- **Model "N"** : Monorail Normal headroom for special application single girder cranes
- **Model "SU"** : Monorail hoists for curved track applications
- **Model "CM"** : Cross Mounted Monorail Hoist



Trolley drive consists of pole changing squirrel-cage gear motor. Integral disc brakes are specially designed for crane service. Low torque, high inertia drives provide smooth acceleration and deceleration without excessive load swing.

Travel motors are provided with DC disc brakes, class F insulation

Adjustable tow arm and trolley travel limit switch available as an option.



Large diameter, machined Hardened carbon steel wheels and drive pinions. Available for most any flange width or beam style. (Applies to Monorail "E", "N" and "SU" models only.)

BIRAIL HOIST



**Double Girder "D" Models
Capacity upto 63T**

Top Running Double Girder Trolley Features :



Drive wheels are forged steel or spheroidal castings.



A **splined drive axle** directly engages the output shaft of the reducer.



Polyamid bumpers at both ends absorb energy



EMH endtrucks use a **direct drive system**, eliminating the need to lubricate open gears, pinions and couplings.



Our motors have Class F insulation. Large surface cooling fins are used for excellent heat dissipation. Our standard drive motors are of single speed squirrel cage design with VFD (inverter) controls. Inverters provide infinitely variable speeds and reduce starting current for extended motor life. A DC rectified disc brake is automatically applied in the event of power failure. The brake is self-adjusting, and virtually maintenance free.

STANDARD FEATURES



Hoist motor and gear train are designed and built to meet the most severe demands of hoisting service requiring frequent reversal and high starting torque. The motor is work rated, with Class F insulation Motors are equipped with thermal sensors and PTC. The gear train consists of hardened and polished helical gears and pinions. Compact design with low weight/output ratio provides a highly efficient, quiet, and long lasting operation.



Rope Guide prevents rope from being unbraided and cut; protects operator from injury.

Maintains the rope in contact with the drum grooves



Easily adjustable dual upper and single lower **gear type limit switches** bring the load hook to a positive stop at any desired position in both the hoisting and lowering directions.



A DC rectified magnet actuated **disc motor brake** is automatically applied in the event of power failure. These self-adjusting and virtually maintenance free brakes are provided with asbestos-free, non polluting brake linings. An expected service life of one million operations before requiring the first adjustment.



Our hoists' electrical control panels, with standard components and spacious design, make service more convenient.



Pre-tested, multi-pin **quick disconnect plugs** and socket connections for fast, safe, mistake-proof electrical assembly.

- Additional Reeving Available to enhance Standard Range.
- 2/1 Reeving for higher speed and lift.
- 1/1 Reeving for extra long lift and speed.
- 6/1 Reeving for higher capacity and lower speed.
- 8/2 And 4/2 Reeving for true vertical lift.
- 8/2 Z type , twin hoist for higher capacity or higher speed and long lift.

Options :

- Hoist overload device.
- Trolley travel limit switches.
- Special trolley wheels for tapered beams.
- Faster trolley speeds.
- Trolley Tow arm.
- 208-230v and 575v, 60Hz options.
- Trolleys VFD.
- IP 65 Hoist and Trolley Drives.
- Special Features for outdoor applications.
- Weight operated limit switch.
- Isolated Hook Pulley block for very high voltage environment.
- Locable Hook - 4 position.
- Special Gauge for Birail Hoist.
- Birail stool up or stool down Applications.
- Customized Birail configuration to fit special dimensional constraints.
- Stationary type UDL, which can be integrated as Foot-mounted, Side-mounted or Hanged.

SAFETY FIRST



DESIGNED AND MANUFACTURED AS PER FEM STANDARDS