



The POD Company  
A SPEED HOUSE GROUP COMPANY



PRE-ENGINEERED  
**BATHROOM PODS**  
OFF-SITE CONSTRUCTION





**The POD Company**  
A SPEED HOUSE GROUP COMPANY

## The Pod Company

Off-site construction of bathroom has been a part of the booming property and hospitality market in the UAE for the last ten years, hotel rooms, universities, and hospital projects are benefitting from pre-engineered bathroom pods produced in the UAE. The local production is now at the quality and efficiency that they can be competitive in the home country market of offsite construction in Europe. The POD Company has produced the bathroom pods for a 650 key 4-star hotel in London as well as India, Oman, and Australia.

The POD Company is a company under the umbrella of the well-established Speed House Group of Companies, already dealing with offsite construction of lightweight steel houses, production of GRC as well as building material supply for the UAE market.

The POD Company was established by a team of well experienced and technically strong professionals with more than 30 years experience in the field of pre-engineered bathroom pods, in Europe and 10 years in the UAE. Within the team we have estimated, designed, project managed and installed bathroom pods into hotels, universities, villas and high rise commercial and residential buildings. The Pod Company is dedicated to finding the best the functional and esthetic solution for each bespoke project, should that be a 5-star hotel room or a student accommodation solution to a given branded specification or suggested by our design team with a wide selection from some of our good suppliers in the market.



## The Product

The POD Company will design, manufacture, deliver and install offsite manufactured bathroom pods as a full turn-key bathroom solution, consisting of a floor, walls, ceiling, with all internal finishes 100 % complete. A pre-engineered bathroom pod is a bathroom built off-site, designed bespoke to each different project to suit the building and specification to the request of the client, architect and/or main contractor.

The bathroom pod can be anything from a simple low-end housing project, with simple 100x100 mm wall ceramics tiles to a complicated 5-star hotel with marble or granite floors and walls, walk-in showers with glass enclosures, glass wall cladding, free-standing baths etc. The more complex and the requirement to detail, the more beneficial it is to build in a factory

controlled environment compared to building it on site, but especially in the GCC market both segments has proven to benefit from the offsite solution. The floors are all cast in concrete, with the option to cast all drainage in the floor and therefore save considerable MEP works and coordination of these works on site. Floors are waterproofed and tiled, the walls and ceiling are added and the box is assembled. The walls which can be precast concrete or lightweight steel and gypsum plasterboard, are waterproofed and tiled, plumbing and electrical is carried out, and the bathroom is fitted out with toilets, bath, shower screen, mirror, brassware etc. The complete turnkey finished bathroom is fully tested and ready for simple on-site connection to the mains like water, drainage, and power.



**Student Accommodation**



**Villas and Apartment**



**Hotel Bathrooms**



**Hospitals**

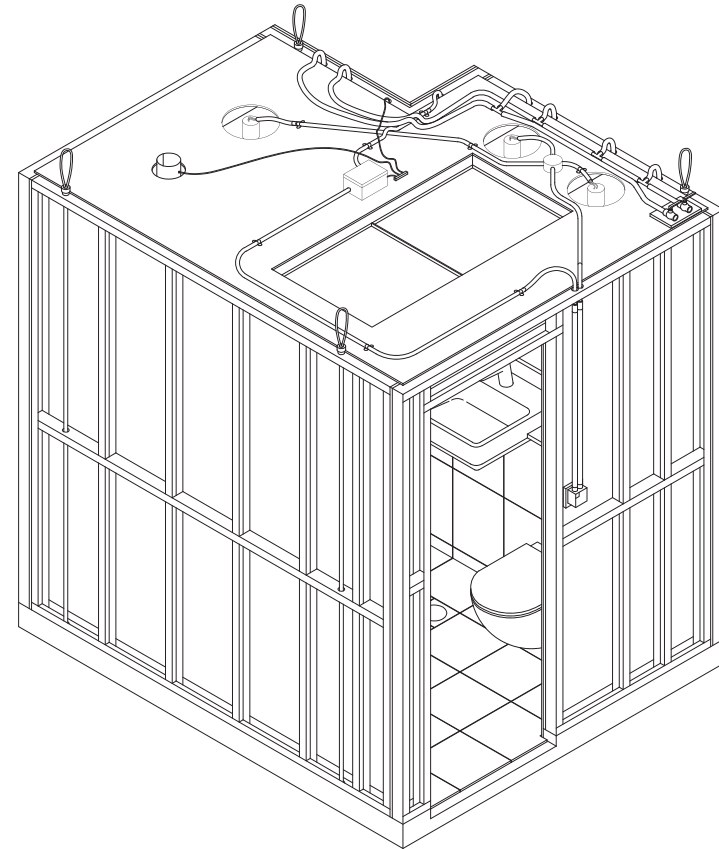
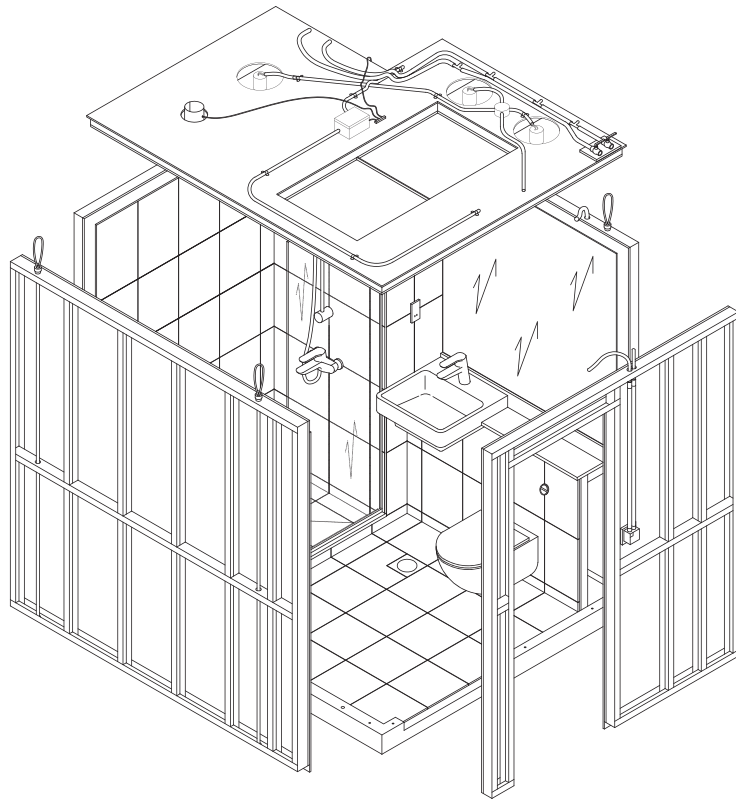


## Design & Build

Pods are built in coordination with the project design team and to the project specification using our standard materials.

## Reference Pods

Prior to full production, and after design freeze, The Pod Company will produce 2 fully functioning reference pods of your project's bathroom as a POD unit. The complete project team will be invited to a reference pod meeting where the details and workmanship in the pod will be agreed and signed off. One reference pod will be delivered to site on the first delivery and the second will stay in the factory as a control sample for the full production run, and delivered to site on the last delivery.





## Benefits of Offsite Construction

With THE POD COMPANY, high-quality modular bathroom pods are delivered fully finished and tested, ready to be installed into a traditional site construction.





### CONSISTENT QUALITY

All pods are cast in the same mould when the reference pod quality is signed off that is then the minimum standard to be supplied.



### LESS SNAGGING

Considerably less requirement for snagging later on in the often hectic stage of the project.



### TIME SAVING

Using Pods can easily reduce the overall build program of the project.



### PROJECT SPECIFIC DESIGN

The Pod is designed and built by an experienced team, specialized in off-site construction technology.



### LESS CRANE TIME

One lift with the crane and all materials and the delivery is completed, no need for pallets for each item to be sent to each floor then each room.



### LESS WORK ON SITE.

The project manager can deal with only one contractor instead of a minimum of 10 suppliers and subcontractors.



### NO STORAGE RESTRICTION

No storage space for toilet material at the site, since the module is delivered finished.



### ONE POINT OF CONTACT

No inter-trade or company arguments, The Pod Company will be coordinating with all suppliers and subcontractors and updating the client accordingly.



### EASY MAINTENANCE

Pods are installed back to back and the location of all the services in the riser shaft gives easy access for maintenance.



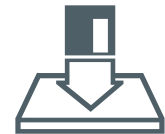
### FULLY TESTED

Pods are delivered fully tested and our team will be on site when water and power are connected to the building to do the final commissioning.



### FIXED PRICE

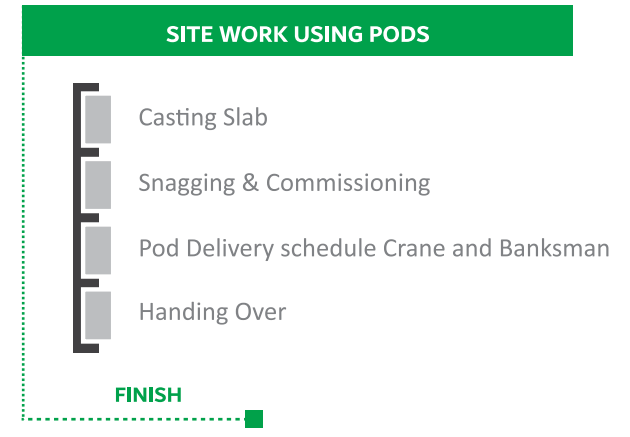
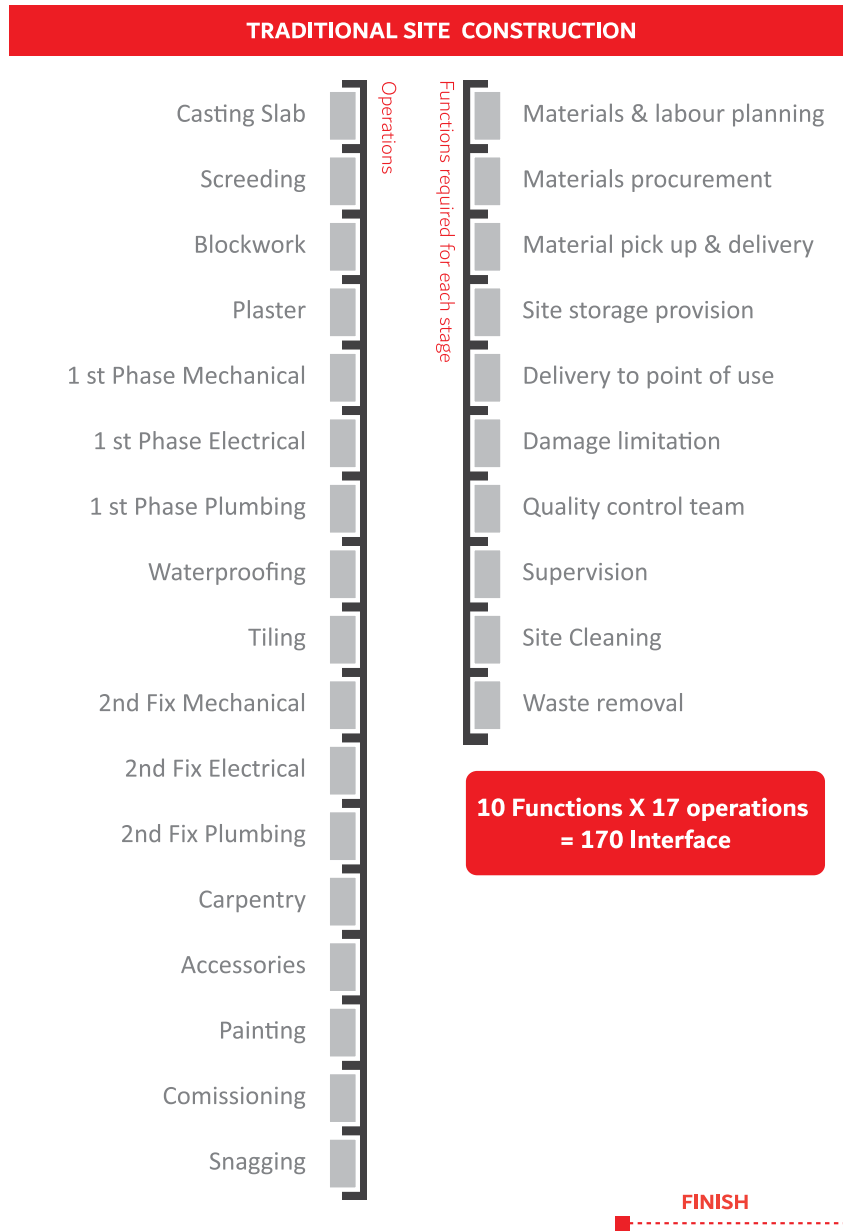
A fixed price is agreed on the specific ation so there will be no surprises.



### FAST INSTALLATION

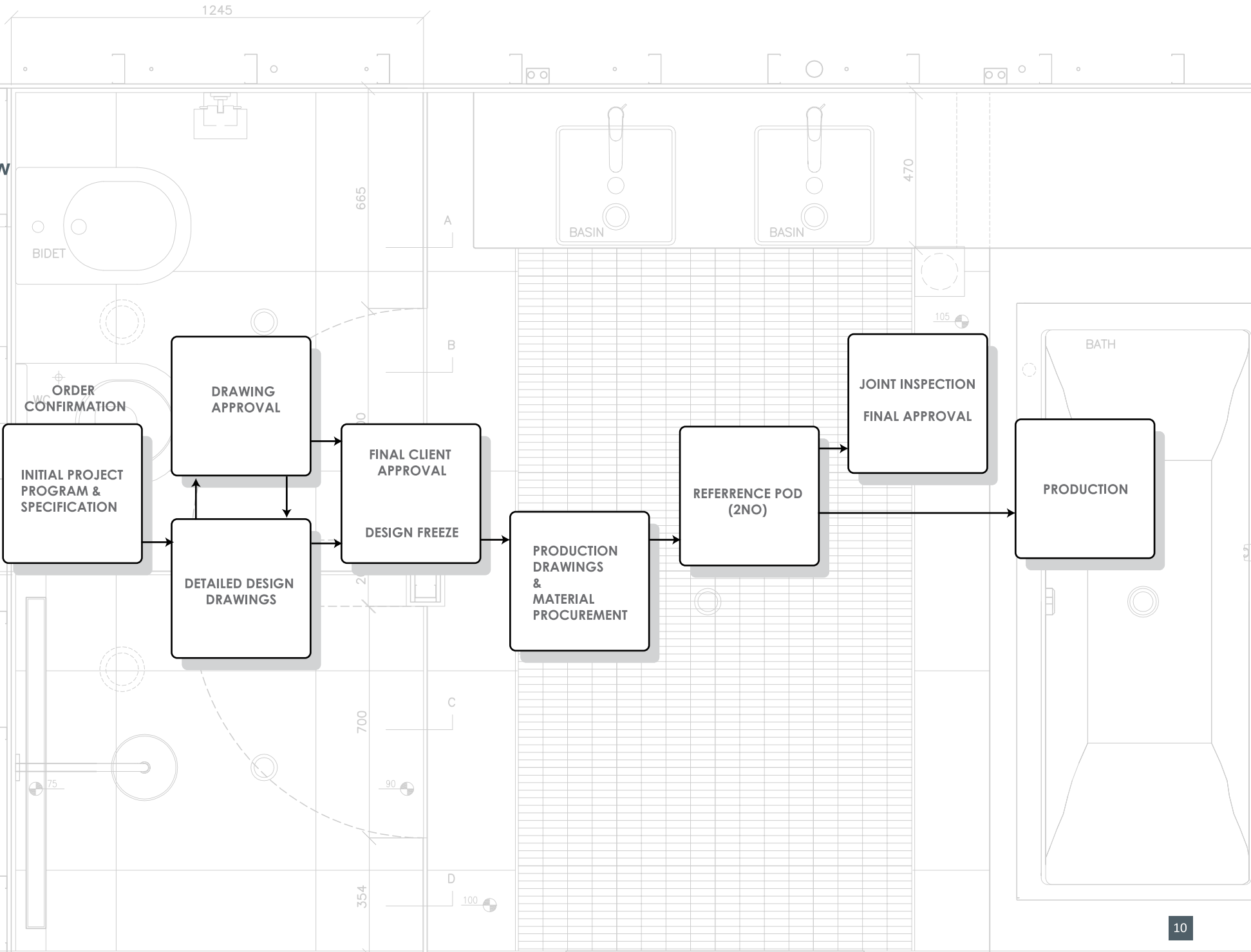
20-30 pods can be positioned a day if the site is ready and pods can also be installed throughout the night.

Off-Site Vs. On-Site Construction

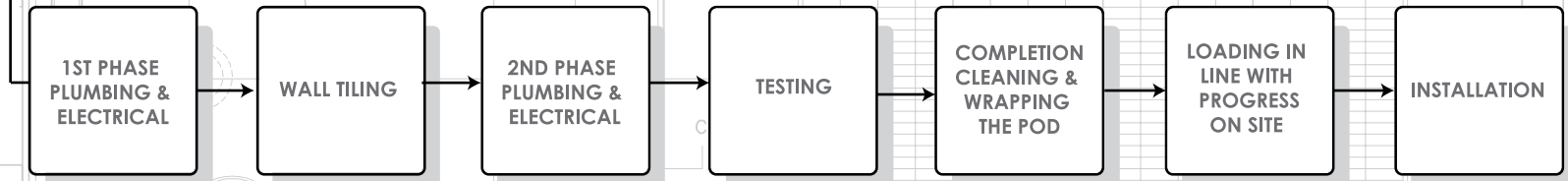
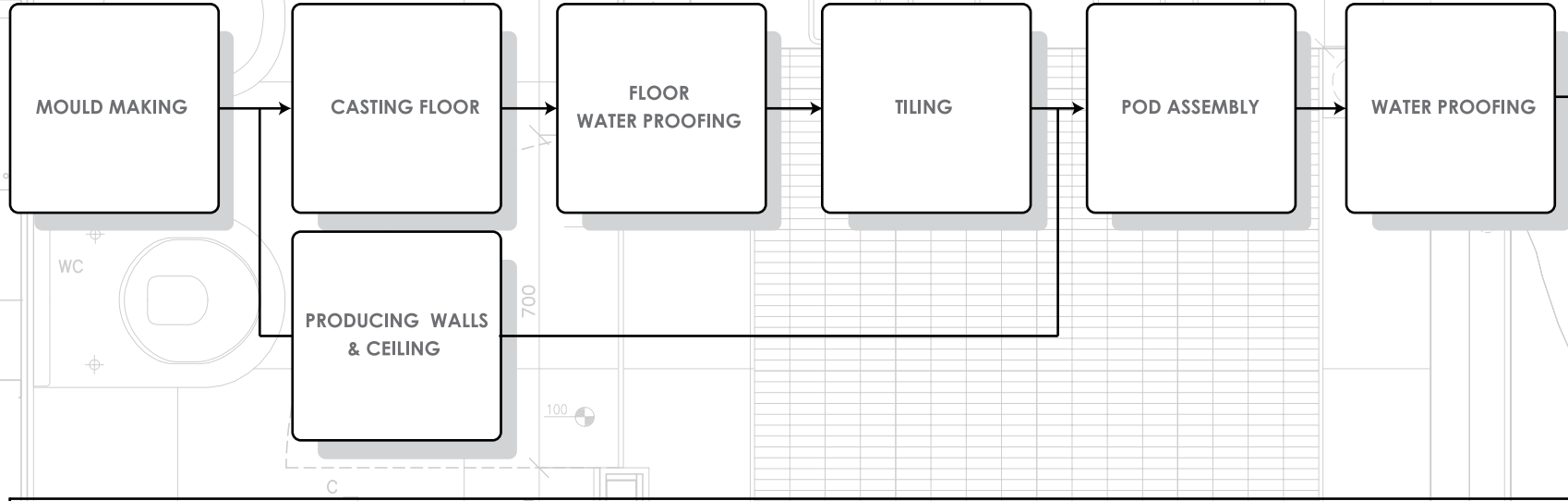


**Order Flow**

1245  
19  
594  
447  
CLIENT  
1136



# Production Process



CONSEALED PIPE WALLS & ELECTRICAL

FIXING OF SANITARY WARE, BRASS WARE, ACCESSORIES, MIRROR & SHOWER ENCLOSURE

419

594

447

1136

1245

665

700

210

354

470

BATH



MOULD MAKING



CASTING



DE MOULDING



FLOOR WATERPROOFING



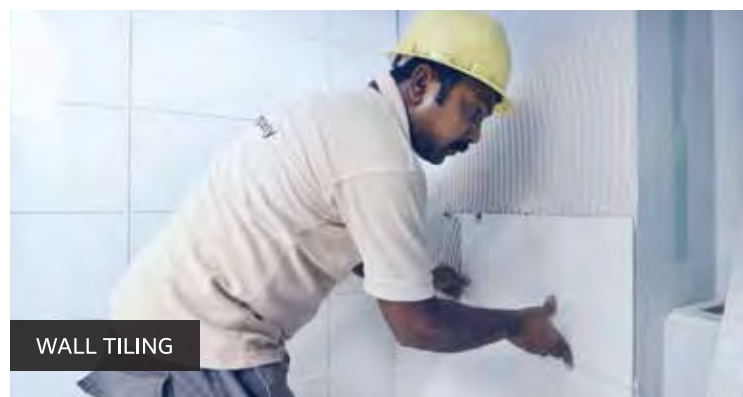
FLOOR TILING



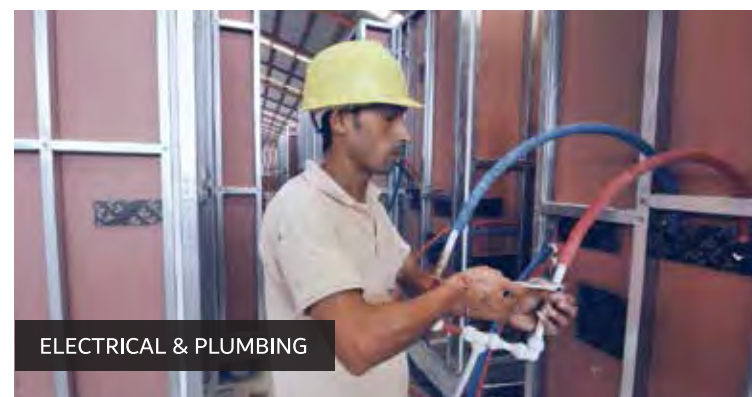
POD ASSEMBLY



WALL WATERPROOFING



WALL TILING



ELECTRICAL & PLUMBING



TESTING



FINISHED POD



TRUCK LOADING

## Pod Installation

The pods are loaded onto a truck or into a container when shipped abroad, driven to the site and lifted directly onto a platform or scaffolding on the side of the building and pushed into place, by our experienced installation team in cooperation with helpers from the contractor.

Pods are located to predetermine datum lines by the main contractor prior to pod installation. Pods with penetration for the drainage through the floor, have a template delivered in advance to have the penetrations ready prior to the installation.





## Installation Process

- Prior to pod installation The Pod Company will issue a method statement, risk assessment and a traffic & management plan, detailing the exact route and site requirement for this route for each pod to be installed.
- The site team will visit the site to acknowledge that the site and the route is ready for the pods and if any penetrations are required a template will be handed over for each pod type prior to installation.
- The main contractor will prepare the level of the pod area prior to site installation, and provide datum lines for pod installation.
- The pods are delivered to site according to an agreed delivery schedule
- Pods are lifted by the site crane either directly into place or onto a platform or scaffolding and pushed into the building
- Pods are positioned and leveled by The Pod Company's site team and helpers from site.
- Pods are handed over floor by floor and access to the pods handed over to the main contractor accordingly
- The MEP contractor can connect to the pods in co-ordination with the main contractor.
- The Pod Company will carry out commissioning and snagging if necessary when power/water/drainage is connected.

## PROJECT DETAILS

### GCC

---

#### UAE

**Project** : AMBB

**Location** : Dubailand

**Project** : Marina Gate Twin Towers

**Location** : Marina Gate

**Project** : Rove

**Location** : Dubai Parks And Resorts

**Project** : ALOFT

**Location** : Palm Jumerah

**Project** : Premier Inn Hotels

**Location** : Al Juraf

#### OMAN

**Project** : Mercure Hotel

**Location** : Sohar

### EUROPE

---

#### UNITED KINGDOM

**Project** : Atrium Hotel

**Location** : Heathrow, London

### ASIA

---

#### INDIA

**Project** : IBIS Hotel

**Location** : Hyderabad

**Project** : IBIS Hotel

**Location** : Coimbatore

**Project** : IBIS Hotel

**Location** : Cochin

### AUSTRALIA

---

#### AUSTRALIA

**Project** : Black Town

**Location** : Sydney, Australia

**Project** : Restwell

**Location** : Sydney, Australia

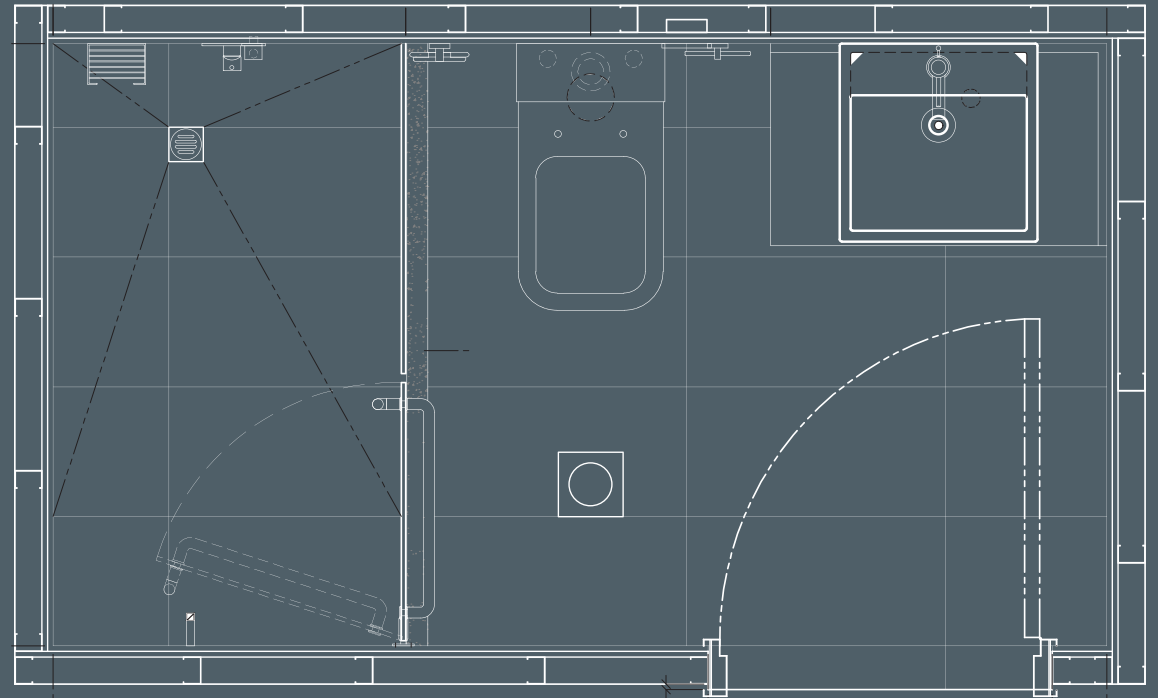






# BLACKTOWN APARTMENTS

SYDNEY, AUSTRALIA

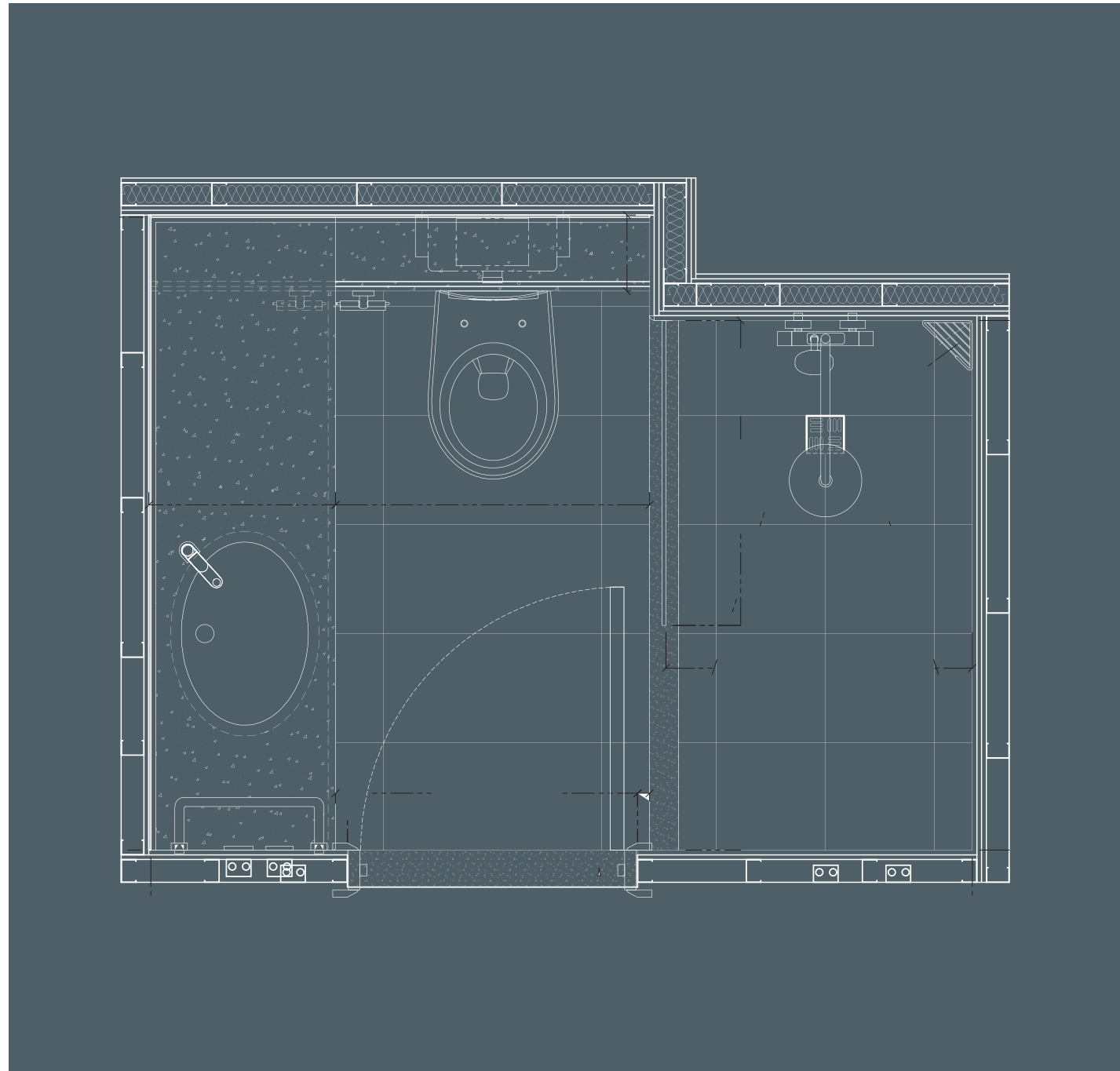






# ATRIUM HOTEL

LONDON, UK

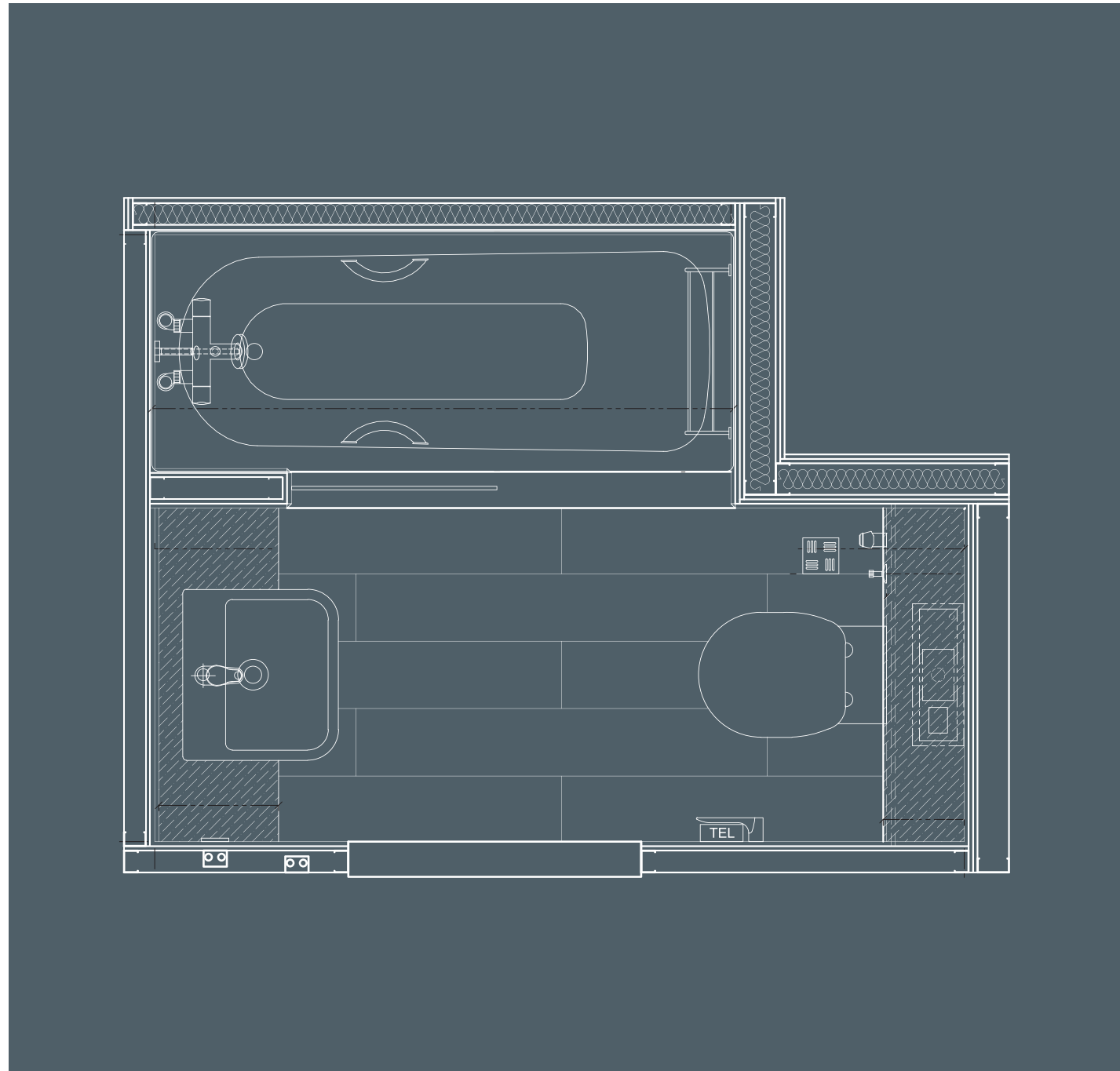


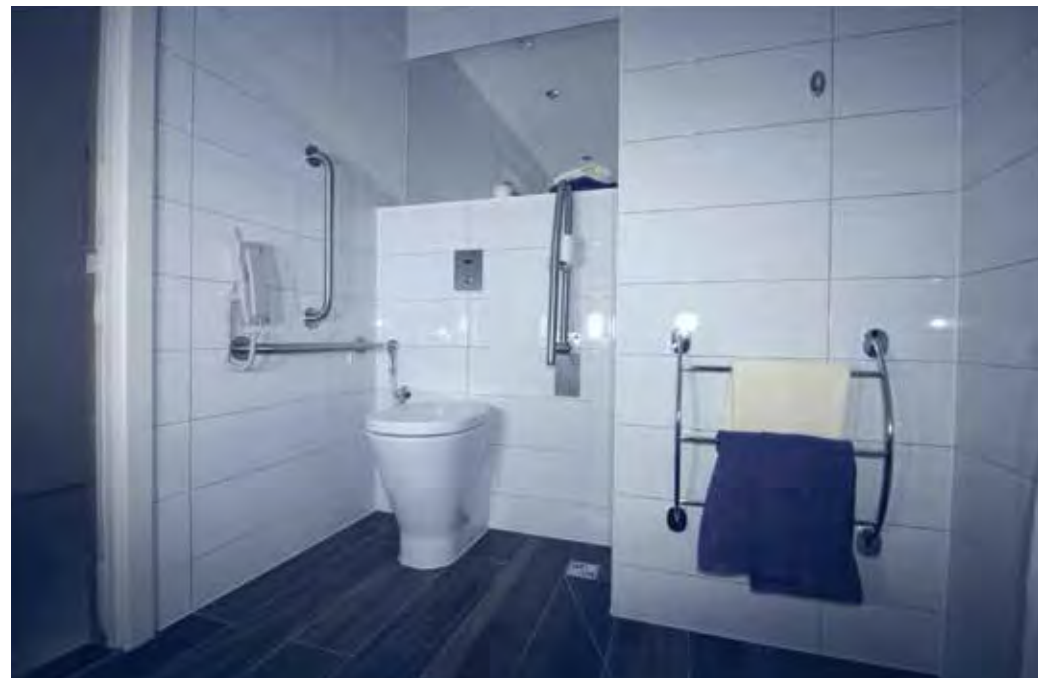




# PREMIER INN HOTEL

DUBAI, UAE

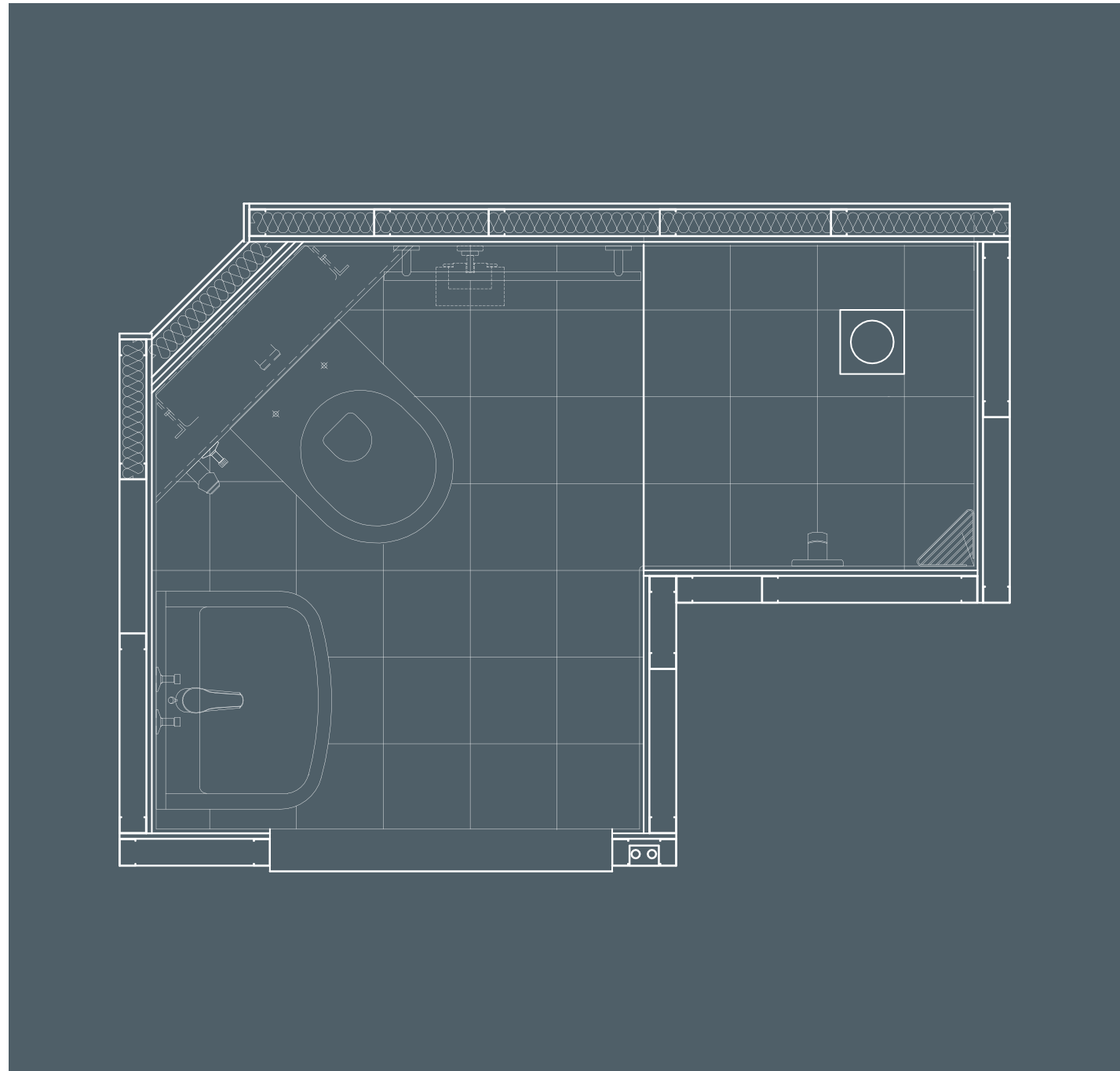






# UNINEST STUDENT ACCOMMODATION

DUBAI, UAE



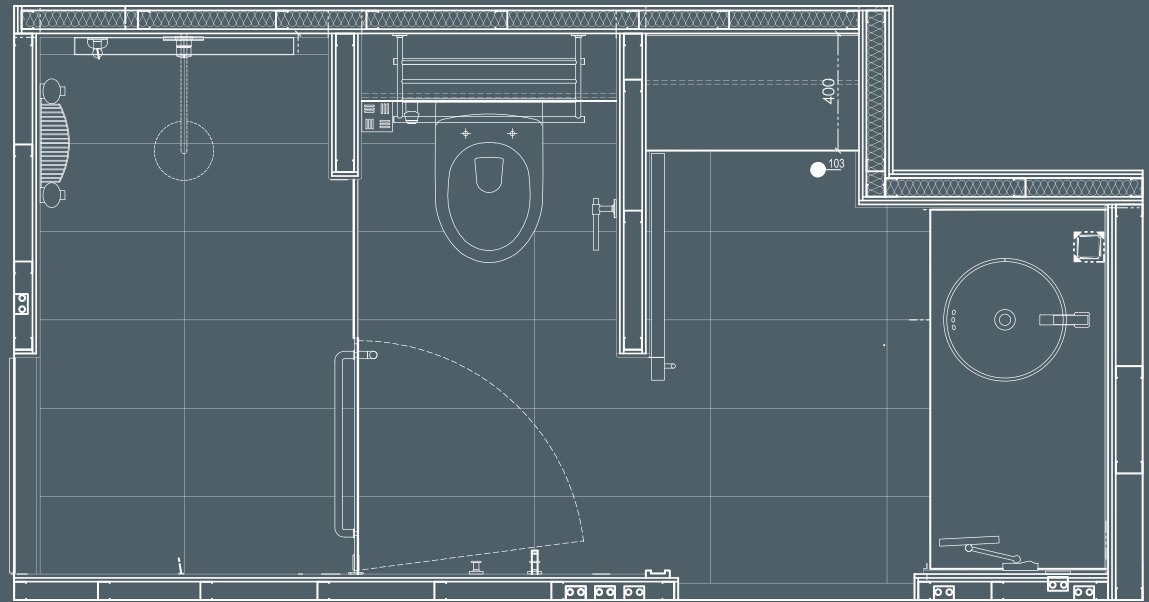






# ALOFT HOTEL

DUBAI, UAE

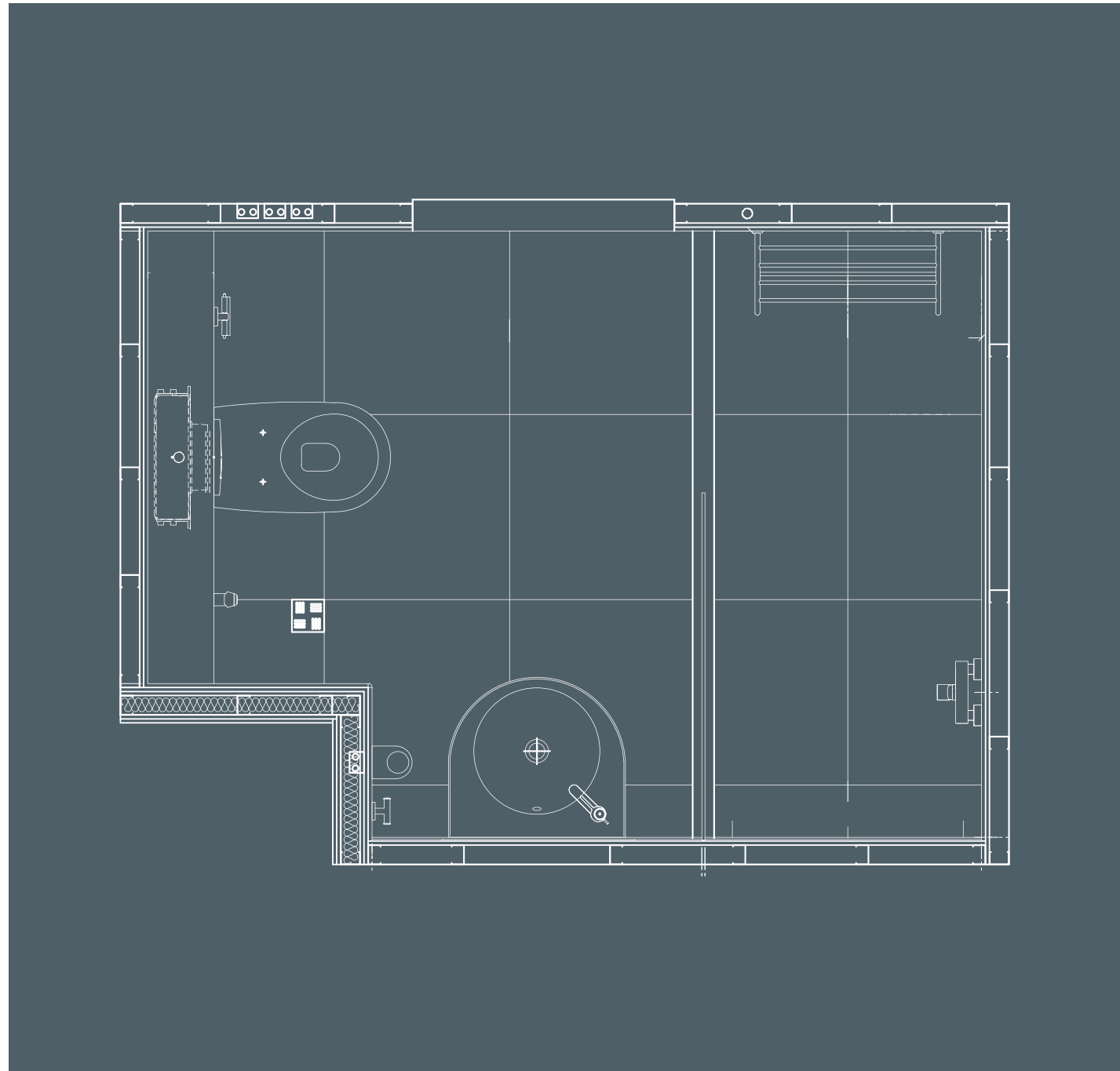






# MERCURE HOTEL

SOHAR, OMAN

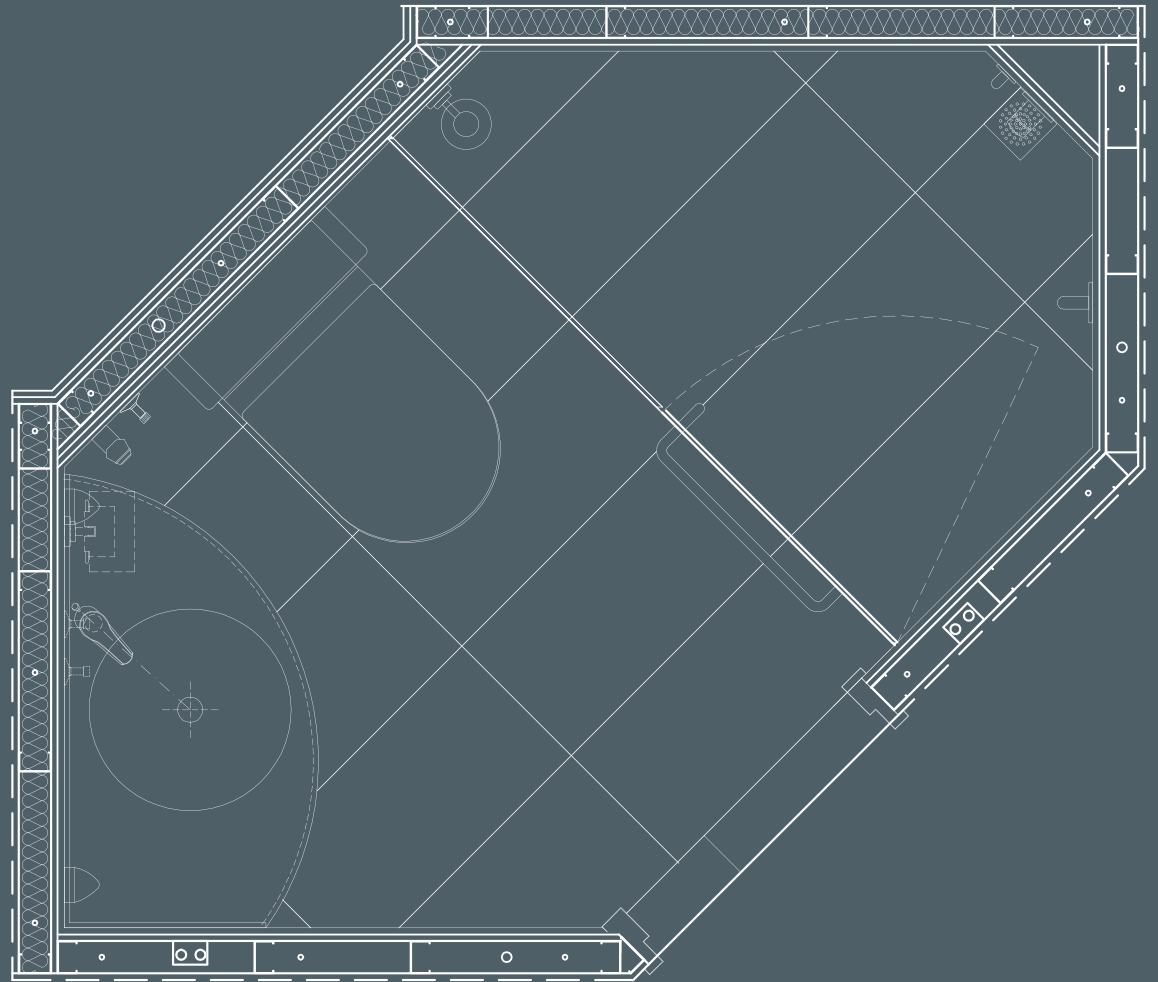


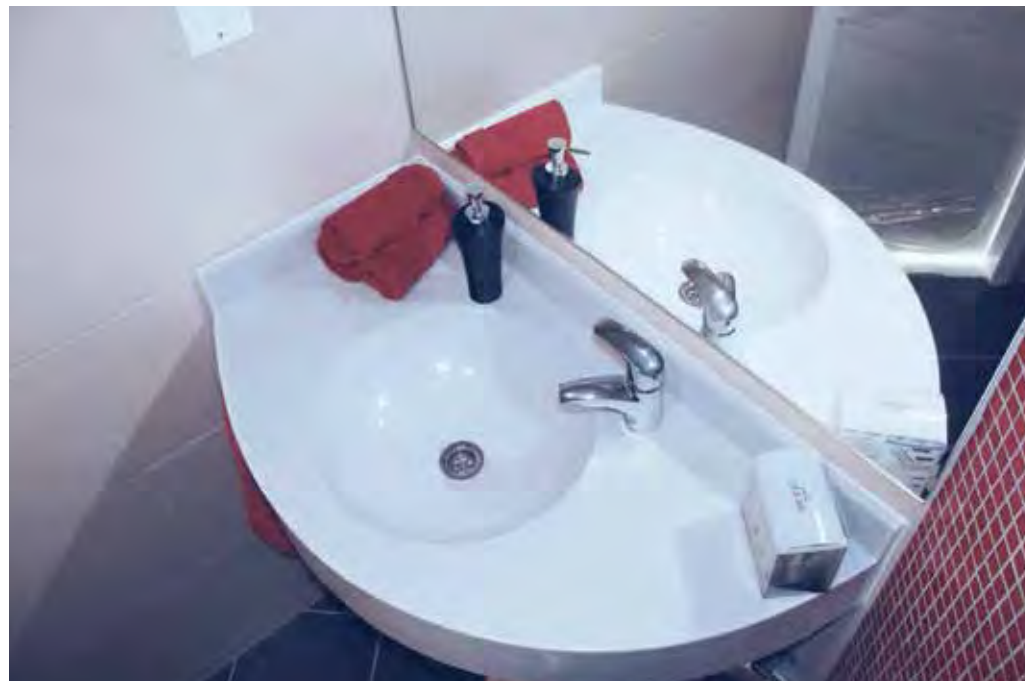




## IBIS HOTEL

INDIA (HYDERABAD, COIMBATORE, COCHIN)

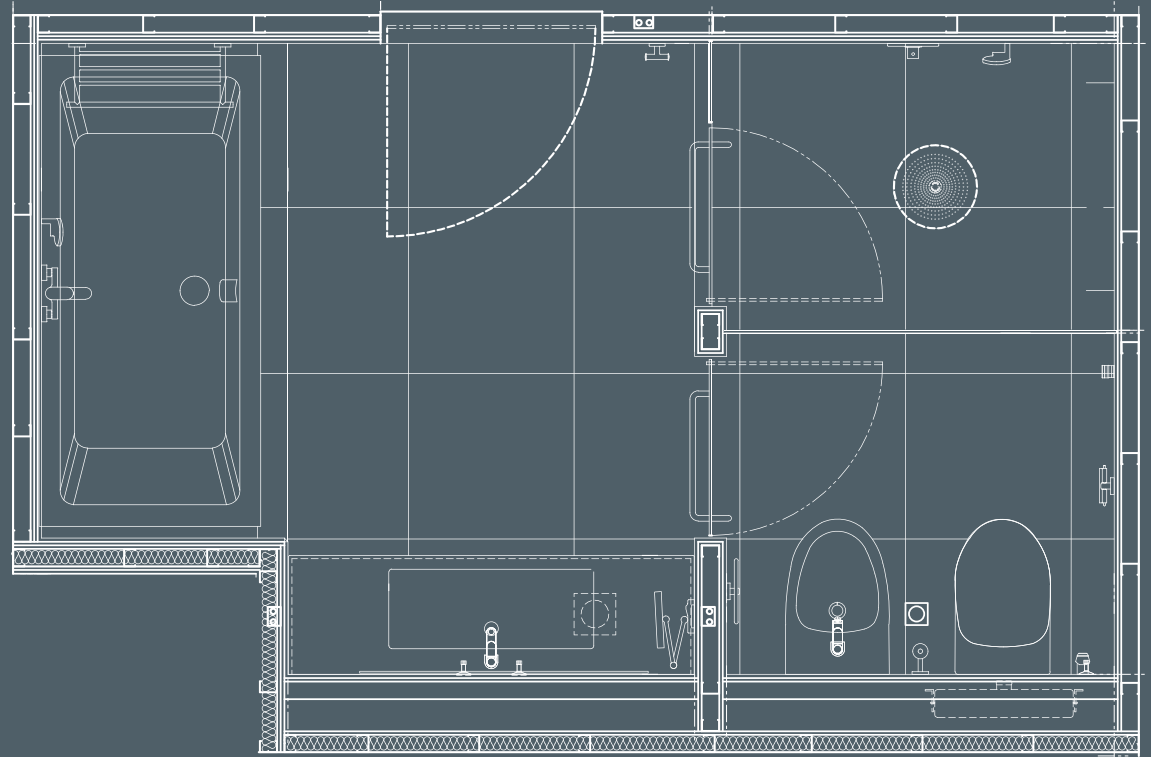






# MARINA HOTEL

DUBAI, UAE

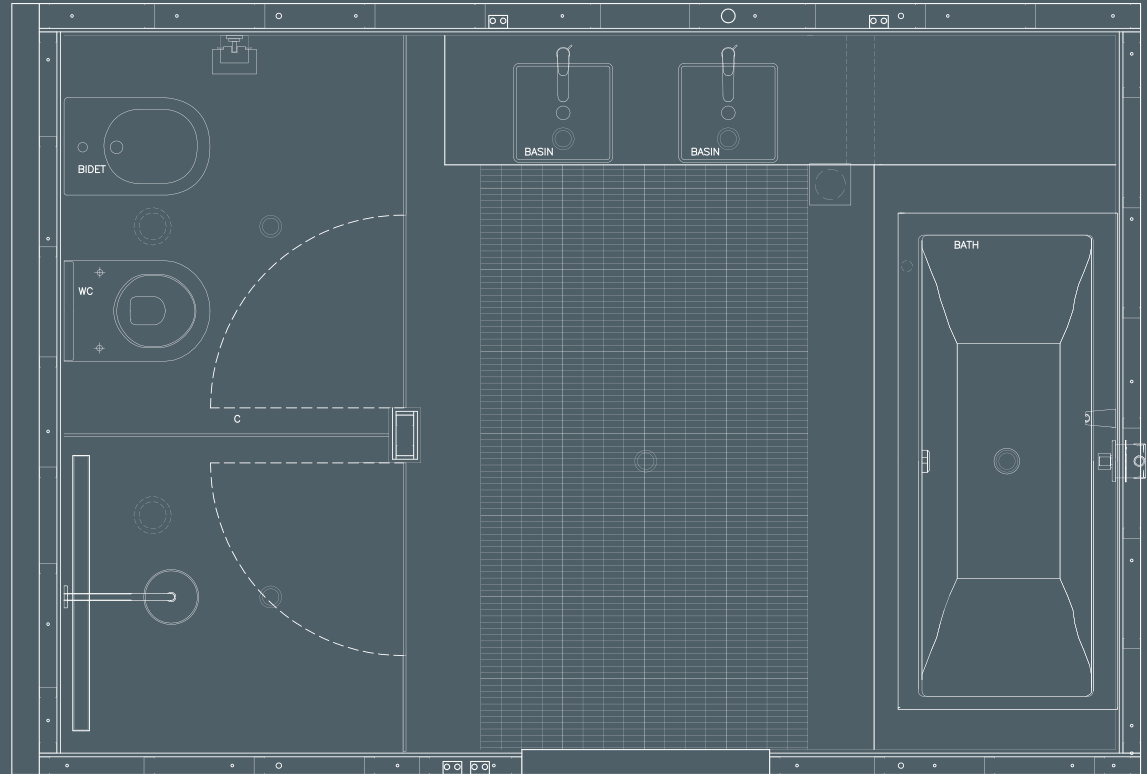


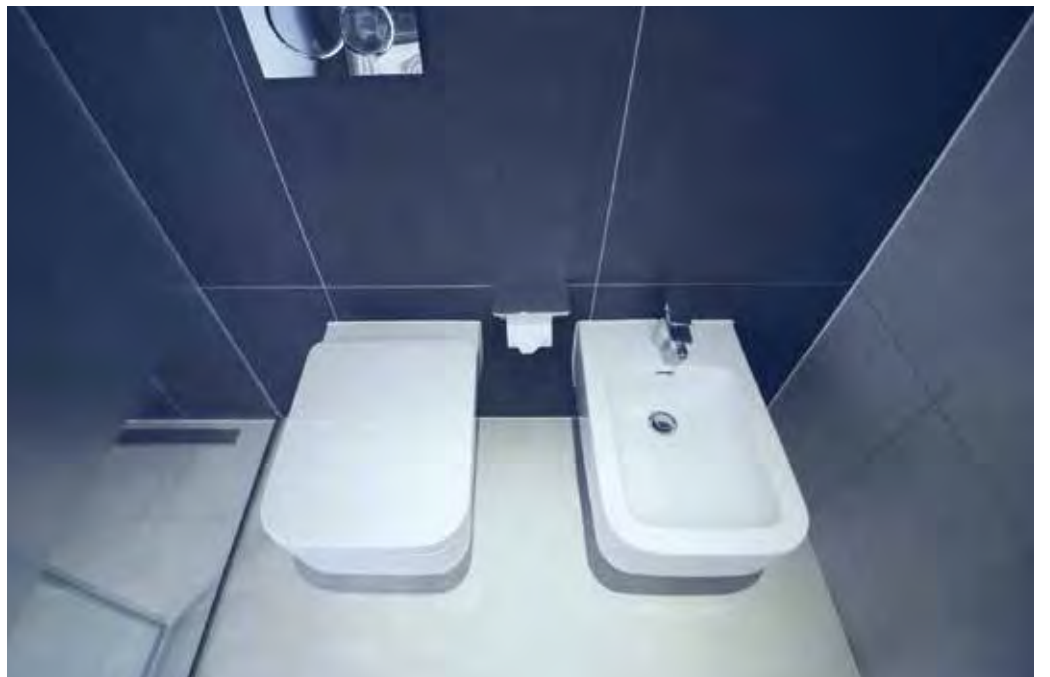




# 5 STAR HOTEL

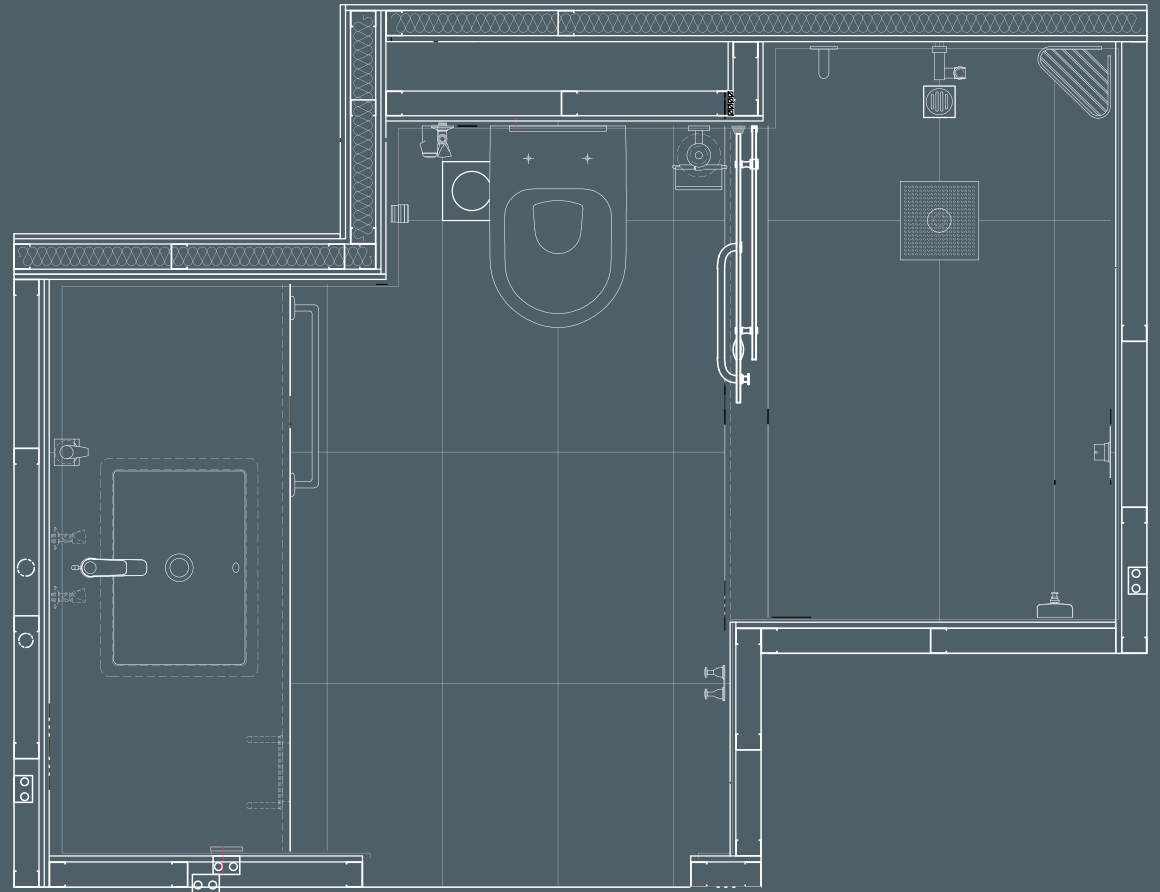
DUBAI, UAE





# ROVE AT THE PARK

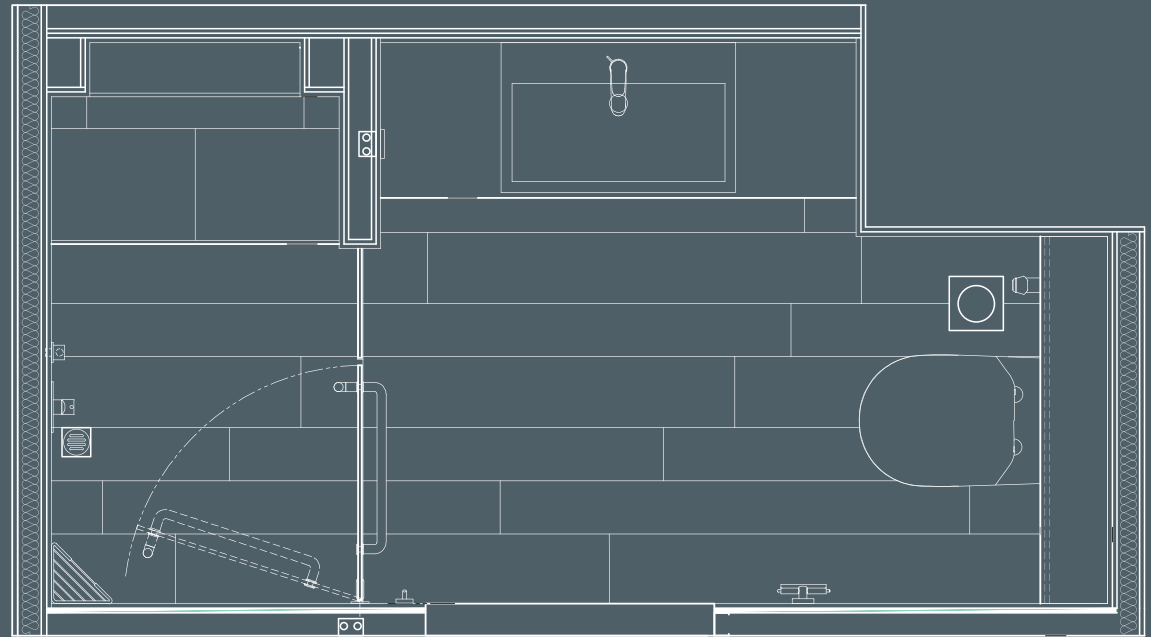
DUBAI, UAE



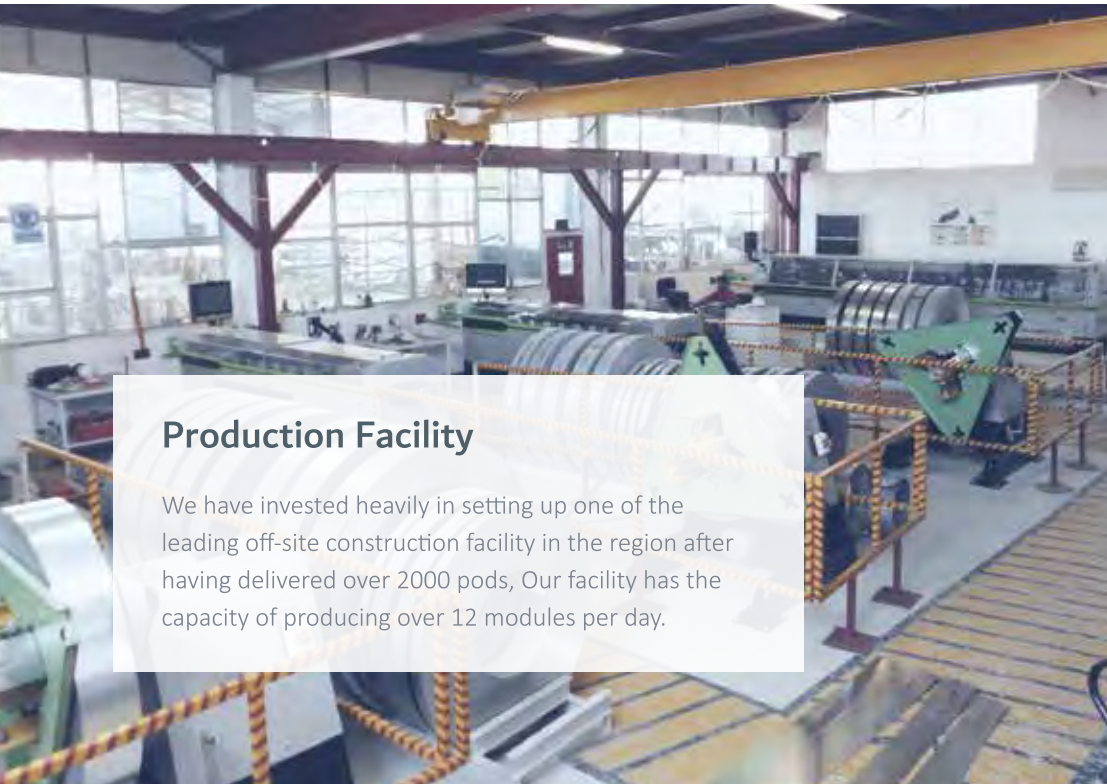


# AL JADAF RESIDENCE

DUBAI, UAE







## Production Facility

We have invested heavily in setting up one of the leading off-site construction facility in the region after having delivered over 2000 pods. Our facility has the capacity of producing over 12 modules per day.









**The POD Company**  
A SPEED HOUSE GROUP COMPANY

**A SPEED HOUSE GROUP COMPANY**

New Industrial Area 1, Munah Street,  
PO Box 627, Ajman, United Arab Emirates.

T: +971 6 748 2929 F: +971 6 748 2268

E: [info@thepodcompany.ae](mailto:info@thepodcompany.ae), W: [www.thepodcompany.ae](http://www.thepodcompany.ae)



DOWNLOAD BROCHURE