

streamline

ELECTROMECHANICAL WORKS LLC

Makes Everything Possible

ISO 9001 / ISO 14001
OHSAS 18001
BUREAU VERITAS
Certification



INDEX

1. ABOUT US

2. IMS POLICY

3. ISO CERTIFICATES

4. LICENSE

5. ORGANIZATION CHART & EMPLOYEES LIST

6. SERVICES WE UNDERTAKE

7. MEP FITOUT JOBS COMPLETED

1. ABOUT US

ABOUT US

STREAMLINE ELECTROMECHANICAL WORKS LLC is a division of Fikree Pipe, one of the leading partners of Plumbing materials in United Arab Emirates for the last 40 years, representing quality products from Europe and Japan.

Streamline was established in April 1993, with the goal of providing good service without compromising on **QUALITY**.

We are proud of our ability to meet the highest standards of service demanded by the clients, architects, service consultants, quality construction companies and reputed contractors. Our service operations are supervised and executed by experienced professionals for many years, having background of many high rise and prestigious projects in Dubai.

We offer the best service to all our clients irrespective of the size or nature of the project/contract.

We also specialize maintenance work of all kinds.

As a corporate policy, we always use the premium quality products to blend with high quality workmanship. Nevertheless, jobs are also executed with cost effective alternative products to meet the client's budgetary objectives.

2. IMS POLICY



STREAMLINE MISSION

To provide our customers with a combined solution in terms of quality MEP works.

STREAMLINE VISION

To provide an aesthetic face to the MEP market in the Gulf region.



IMS POLICY

Streamline Electromechanical Works LLC is an organization set up since February 1993 in Dubai UAE and serves its customers with Mechanical, Electrical and Plumbing Services.

We, the Top Management of Streamline Electromechanical LLC hereby express our commitment to the following:

- **Customer Requirement**
Enhancing Customer Satisfaction in all areas of our business
- **Environmental Requirement**
Protect Environment & prevent environmental pollution while executing our production and related activities
- **Occupational Health & Safety Requirement**
Prevent persons from injury and ill-health while working with us
- **Compliance Requirement**
Adhering to the local Legal & Regulatory Requirements while executing our business and striving to enhance customer satisfaction
- **Other Interested Parties Requirement**
Meeting relevant requirements as determined in the Risk & Opportunities Assessment
- **Continual Improvement**
Ensuring that the processes for the Integrated Management System are improved on a continual basis by setting and reviewing IMS Objectives and relevant functions, levels and processes

This policy is reviewed for continuing suitability during the Management Reviews and is documented and put into effect from the 1st January 2017.

For Streamline Electromechanical LLC,

MR. ASEM FIKREE
CHAIRMAN

MR. K. H. WAHABUDDIN
MANAGING PARTNER

3. ISO CERTIFICATES

ISO CERTIFICATIONS

An ISO certified company with certifications in the area of Quality(ISO9001:2015, Environment(ISO 14001:2015) and OSHAS(ISO 18001:2007).



STREAMLINE ELECTROMECHANICAL WORKS L.L.C

P. O. BOX 14749, WAREHOUSE NO. 6, OPPOSITE TASJEEEL,
INDUSTRIAL AREA NO. 5, AL QUSAIS, DUBAI,
UNITED ARAB EMIRATES.

Bureau Veritas Certification Holding SAS – UK Branch certifies that the Management System of the above organisations has been audited and found to be in accordance with the requirements of the management system standards detailed below

BS OHSAS 18001:2007
Scope of Certification

MECHANICAL, ELECTRICAL AND PLUMBING WORKS FOR RESIDENTIAL AND COMMERCIAL BUILDING AND ESTABLISHMENTS.

Original cycle start date: **25th AUGUST 2014**
Expiry date of previous cycle: **25th AUGUST 2017**
Recertification Audit date: **20th MARCH 2017**
Recertification cycle start date: **4th MAY 2017**

Subject to the continued satisfactory operation of the organization's Management System, this certificate expires on: **8th JUNE 2020**

Certificate No. **IND17.4256UIH** Version No. 2, Revision date: **29/05/2019**





Signed on behalf of BVCH SAS UK Branch

Certification body address: 9th Floor, 66 Pall Mall Street, London, E1 8HG, United Kingdom
Local office: Bureau Veritas Certification, P.O. Box 9113, 211 Second Floor, 2nd of December Street, Dubai Center, Dubai, U.A.E.

Further clarifications regarding the scope of this certificate and the applicability of the management system requirements may be obtained by consulting the organisation.
To check this certificate validity please call 00671 4 3074400



STREAMLINE ELECTROMECHANICAL WORKS L.L.C

P. O. BOX 14749, WAREHOUSE NO. 6, OPPOSITE TASJEEEL,
INDUSTRIAL AREA NO. 5, AL QUSAIS, DUBAI,
UNITED ARAB EMIRATES.

Bureau Veritas Certification Holding SAS – UK Branch certifies that the Management System of the above organisation has been audited and found to be in accordance with the requirements of the management system standards detailed below

ISO 14001:2015
Scope of Certification

MECHANICAL, ELECTRICAL AND PLUMBING WORKS FOR RESIDENTIAL AND COMMERCIAL BUILDING AND ESTABLISHMENTS.

Original cycle start date: **25th AUGUST 2014**
Expiry date of previous cycle: **25th AUGUST 2017**
Recertification Audit date: **20th MARCH 2017**
Recertification cycle start date: **4th MAY 2017**

Subject to the continued satisfactory operation of the organization's Management System, this certificate expires on: **8th JUNE 2020**

Certificate No. **IND17.4256UIE** Version No. 2, Revision date: **29/05/2019**





Signed on behalf of BVCH SAS UK Branch

Certification body address: 9th Floor, 66 Pall Mall Street, London, E1 8HG, United Kingdom
Local office: Bureau Veritas Certification, P.O. Box 9113, 211 Second Floor, 2nd of December Street, Dubai Center, Dubai, U.A.E.

Further clarifications regarding the scope of this certificate and the applicability of the management system requirements may be obtained by consulting the organisation.
To check this certificate validity please call 00671 4 3074400



STREAMLINE ELECTROMECHANICAL WORKS L.L.C

P. O. BOX 14749, WAREHOUSE NO. 6, OPPOSITE TASJEEEL,
INDUSTRIAL AREA NO. 5, AL QUSAIS, DUBAI,
UNITED ARAB EMIRATES.

Bureau Veritas Certification Holding SAS – UK Branch certifies that the Management System of the above organisations has been audited and found to be in accordance with the requirements of the management system standards detailed below

ISO 9001:2015
Scope of Certification

MECHANICAL, ELECTRICAL AND PLUMBING WORKS FOR RESIDENTIAL AND COMMERCIAL BUILDING AND ESTABLISHMENTS.

Original cycle start date: **8th JUNE 2014**
Expiry date of previous cycle: **8th JUNE 2017**
Recertification Audit date: **20th MARCH 2017**
Recertification cycle start date: **4th MAY 2017**

Subject to the continued satisfactory operation of the organization's Management System, this certificate expires on: **8th JUNE 2020**

Certificate No. **IND17.4256UIQ** Version No. 2, Revision date: **29/05/2019**





Signed on behalf of BVCH SAS UK Branch

Certification body address: 9th Floor, 66 Pall Mall Street, London, E1 8HG, United Kingdom
Local office: Bureau Veritas Certification, P.O. Box 9113, 211 Second Floor, 2nd of December Street, Dubai Center, Dubai, U.A.E.

Further clarifications regarding the scope of this certificate and the applicability of the management system requirements may be obtained by consulting the organisation.
To check this certificate validity please call 00671 4 3074400

4. LICENSE



رخصة تجارية
Commercial License

تفاصيل الرخصة / License Details

License No.	233933	رقم الرخصة
Company Name	STREAM LINE ELECTROMECHANICAL WORKS	اسم الشركة
Trade Name	STREAM LINE ELECTROMECHANICAL WORKS(LL.C)	الإسم التجارى
Legal Type	Limited Liability Company(LLC)	الشكل القانونى
Expiry Date	30/01/2020 تاريخ الإنتهاء	تاريخ الإصدار
D&B D-U-N-S® No	561368189 الرقم العالمى	رقم الرخصة الام
Register No.	1012307 رقم السجل التجارى	عضوية الغرفة
	Issue Date	31/01/1993 ذات مسئولية محدودة
	Main License No.	233933
	DCCI No.	30271

الاطراف / License Members

Share / الحصص	Role / الصفة	Nationality / الجنسية	Name / الإسم	No./ رقم الشخص
	Manager / مدير	United Arab Emirates / الامارات	عاصم محمد امين فكري	8612
			ASEM MOHAMED AMIN FIKREE	

نشاط الرخصة التجارية / License Activities

Painting Contracting	اعمال الاصباع والدهانات
Electrical Fitting Contracting	اعمال التمديدات الكهربائية
Floor and wall Tiling Works	اعمال تبييط الارضيات والحوائط
Air-Conditioning, Ventilations & Air Filtration Systems	تركيب انظمة التكييف والتهوية وتنقية الهواء وصيانتها
Installation & Maintenance	تركيب الأسقف المعلقة و القواطع الخفيفة
False Ceiling & Light Partitions Installation	اعمال تركيب المعدات الكهروميكانيكية وصيانتها
Electromechanical Equipment Installation and Maintenance	تركيب معدات السلامة واطفاء الحريق
Fire Fighting Safety Equipment Installation	اعمال التمديدات والتركييبات الصحية
Plumbing & Sanitary Contracting	اعمال النجارة وتركيب الارضيات
Carpentry & Flooring Contracting	تركيب المواد العازلة في الأبنية والمنشآت المدنية
Insulation Contracting	

العنوان / Address

Phone No	971-4-2838414	تليفون	P.O. Box	2480	صندوق بريد
Fax No	971-4-2568838	فاكس	Parcel ID	248-7131	رقم القطعة
Mobile No	971-50-4510865	هاتف متحرك			مستودع رقم 6 ملك مؤسسة دبي العقارية - ديرة - القيصم الصناعية الخامسة

Print Date 28/02/2019 9:09 تاريخ الطباعة Receipt No. 0 رقم الإيصال

يمكنك الآن تجديد رخصتك التجارية من خلال الرسائل النصية القصيرة، أرسل رقم الرخصة إلى 6969 (دو/اتصالات) للحصول على اذن الدفع.
Now you can renew your trade license by sending a text message (SMS). Send your trade license number to 6969 (Du/ Etisalat) to receive payment

وثيقة إلكترونية معتمدة وصادرة بدون توقيع من دائرة التنمية الاقتصادية، لمراجعة صحة البيانات الواردة في الرخصة برجاء زيارة الموقع www.dubaided.gov.ae
Approved electronic document issued without signature by the Department of Economic Development. To verify the license kindly visit www.dubaided.gov.ae



ملحق الشركاء
Partners

تفاصيل الرخصة / License Details

D&B D-U-N-S ® No. 561368189 الرقم العالمي License No. 233933 رقم الرخصة

اصحاب الرخصة / License Partners

Share / الحصص	Sr. No./مستلسل الشخص	Nationality / الجنسية	Name / الإسم
51.0000000%	8612	الامارات / United Arab Emirates	عاصم محمد امين فكري / ASEM MOHAMED AMIN FIKREE
49.0000000%	258210	الهند / India	كيزهاكي بوليموتيل حميد وهاب الدين

Print Date 28/02/2019 9:09 تاريخ الطباعة Receipt No. 0 رقم الإيصال

يمكنك الآن تجديد رخصتك التجارية من خلال الرسائل النصية القصيرة، أرسل رقم الرخصة إلى 6969 (دو/اتصالات) للحصول على اذن الدفع.
Now you can renew your trade license by sending a text message (SMS). Send your trade license number to 6969 (Du/ Etisalat) to receive payment

وثيقة إلكترونية معتمدة وصادرة بدون توقيع من دائرة التنمية الاقتصادية. لمراجعة صحة البيانات الواردة في الرخصة برجاء زيارة الموقع www.dubaied.gov.ae
Approved electronic document issued without signature by the Department of Economic Development. To verify the license kindly visit www.dubaied.gov.ae

شهادة تسجيل العضوية
Membership Certificate

License no.	233933	رقم الرخصة	233933
Membership no.	30271	رقم العضوية	30271
Registration no.	1012307	رقم السجل التجاري	1012307
Trade Name	STREAM LINE ELECTROMECHANICAL WORKS(L.L.C)	الاسم التجاري	استريم لاين لاعمال الكهروميكانيكية(ش.ذ.م. (م)
Legal Status	Limited Liability Company(LLC)	الشكل القانوني	ذات مسنولية محدودة
Activity	Air-Conditioning, Ventilations & Air Filtration Systems Installation & Maintenance Electromechanical Equipment Installation and Maintenance Plumbing & Sanitary Contracting Electrical Fitting Contracting Fire Fighting Safety Equipment Installation Floor and wall Tiling Works Painting Contracting Carpentry & Flooring Contracting Insulation Contracting False Ceiling & Light Partitions Installation	نوع النشاط	تركيب انظمة التكييف والتهوية وتنقية الهواء وصيانتها اعمال تركيب المعدات الكهروميكانيكية وصيانتها اعمال التمديدات والتركيبات الصحية اعمال التمديدات الكهربائية تركيب معدات السلامة واطفاء الحريق اعمال تخطيط الارضيات والحوائط اعمال الاصباغ والدهانات اعمال النجارة وتركيب الارضيات تركيب المواد العازلة في الأبنية والمنشآت المدنية تركيب الأسقف المعلقة و القواطع الخفيفة
Member Since	31/01/1993	تاريخ الإنتساب	31/01/1993
Date of Issue	31/01/1993	تاريخ الإصدار	31/01/1993
Expiry Date	30/01/2020	تاريخ الإنتهاء	30/01/2020

شهادة تسجيل العضوية
Membership Certificate

License no.	233933	رقم الرخصة	233933
Membership no.	30271	رقم العضوية	30271
Registration no.	1012307	رقم السجل التجاري	1012307
Trade Name	STREAM LINE ELECTROMECHANICAL WORKS(L.L.C)	الاسم التجاري	استريم لاين لاعمال الكهروميكانيكية(ش.ذ.م. (م)
Legal Status	Limited Liability Company(LLC)	الشكل القانوني	ذات مسنولية محدودة
Activity	Air-Conditioning, Ventilations & Air Filtration Systems Installation & Maintenance Electromechanical Equipment Installation and Maintenance Plumbing & Sanitary Contracting Electrical Fitting Contracting Fire Fighting Safety Equipment Installation Floor and wall Tiling Works Painting Contracting Carpentry & Flooring Contracting Insulation Contracting False Ceiling & Light Partitions Installation	نوع النشاط	تركيب انظمة التكييف والتهوية وتنقية الهواء وصيانتها اعمال تركيب المعدات الكهروميكانيكية وصيانتها اعمال التمديدات والتركيبات الصحية اعمال التمديدات الكهربائية تركيب معدات السلامة واطفاء الحريق اعمال تخطيط الارضيات والحوائط اعمال الاصباغ والدهانات اعمال النجارة وتركيب الارضيات تركيب المواد العازلة في الأبنية والمنشآت المدنية تركيب الأسقف المعلقة و القواطع الخفيفة
Member Since	31/01/1993	تاريخ الإنتساب	31/01/1993
Date of Issue	31/01/1993	تاريخ الإصدار	31/01/1993
Expiry Date	30/01/2020	تاريخ الإنتهاء	30/01/2020

5. ORGANIZATION CHART & EMPLOYEES LIST

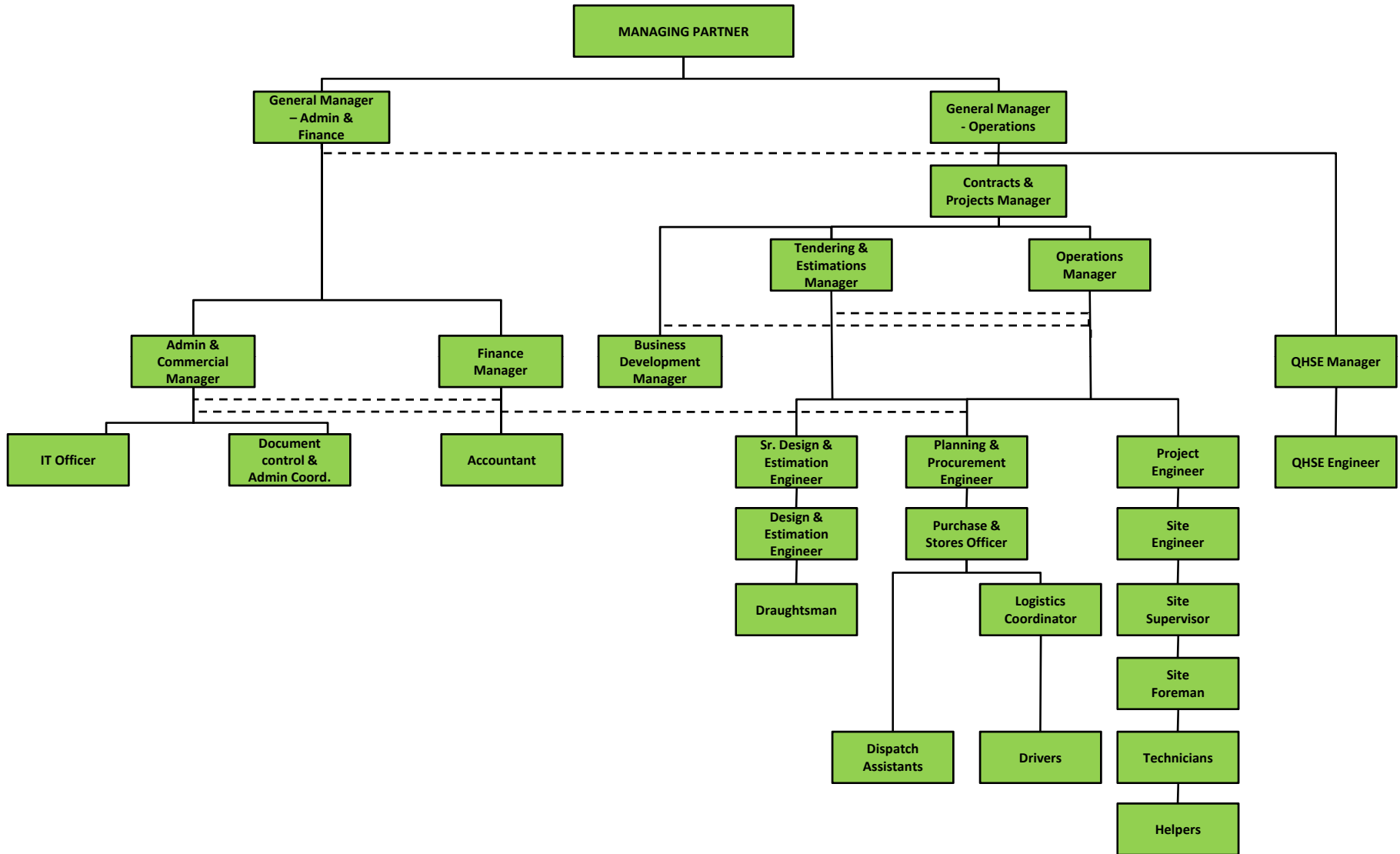
OUR WORK FORCE

We are experienced and evergreen solution providers who are capable of meeting the requirements of the clients keeping in mind the quality and safety aspects. Our engineers keep track of the emerging trends in the market and bring about a fitting solution to the challenges faced during the operation and every project is taken as a new challenge by our team who collectively deliver the best possible results on our day to day basis.

- General Manager
- Operations Manager
- Marketing Engineer
- Estimation Engineers (Mechanical and Electrical)
- Engineers(Mechanical and Electrical)
- Draughtsman(Mechanical and Electrical)
- Accountant
- Supervisors
- Technicians(Mechanical and Electrical)
- Purchase and Store Manager and Assistants
- Logistics



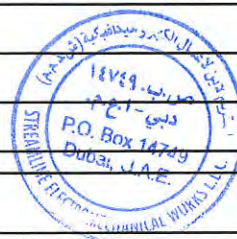
ORGANIZATION CHART



TOP MANAGEMENT

1	Chairman - Mr. Asem Fikree
2	Managing Partner - Mr. K.H. Wahabuddin
3	GM - Admin & Finance - Ms. Zerina Wahab
4	GM - Operations - Ms. Harida Wahabuddin

S. NO	DESIGNATIONS	NO OF EMPLOYEES
5	Contracts & Projects Manager	1
6	Operations Manager	1
7	Project Manager	1
8	Tendering & Estimation Manager	1
9	QHSE Manager	1
10	Business Development Manager	1
11	Finance Manager	1
12	Admin & Commercial Manager	1
13	Project Engineers - Mechanical	3
14	HVAC Engineers	3
15	Plumbing & Fire fighting Engineers	5
16	Plumbing Site Engineers	3
17	Electrical Project Engineers	2
18	Electrical Site Engineers	5
19	Purchase Officer	1
20	Electrical Estimator	2
21	Mechanical Estimator	1
22	Electrical Draughtsman	2
23	Mechanical Draughtsman	3
24	Site Supervisors	6
25	Safety Officer	1
26	Foreman	8
27	Technicians	40
28	Helpers	55
29	Stores Incharges	4
30	Other Office Staffs	3
31	Drivers	5

Total
164


6. SERVICES WE UNDERTAKE

DETAILS OF SERVICES WE UNDERTAKE

MECHANICAL

HVAC

Installation of all types of AC units, VAV's with BMS integration. Duct works (Metallic and preinsulated) with related fire dampers, attenuators, vcd's, grills and diffusers etc.

Total Ventilation Solution including installation of ESP and Ecology units with all duct and control works requirement for F&B outlets.

Installation of dedicated Air Conditioning System for IT rooms with DX units, CCU's etc with control panel.



Fire Fighting

Installation of fire pumps, Sprinkler system with related pipe works, installation of fire hose reel cabinets etc.



Fire Suppression System

Installation of FM 200 fire suppression system for IT rooms, LV rooms, Control rooms etc. Installation of automatic fire extinguishers.



ELECTRICAL

LV Panel and associated switch gear installation:-

Supply and installation of LV panels, SMDB's, DB's etc. with upstream and downstream power cabling, termination, testing and commissioning.



Lighting

Installation of all types of light fittings with wiring including Lighting Control System incorporating dimming panel, Movement Sensors, Occupancy Sensors, PIR Sensors etc.



Fire Alarm System

Installation of Fire Alarm with Voice Evacuation System including Fire Alarm Control panel and other devices with Fire Resistant Cabling.



IT Room

Power System for IT room equipment's including UPS installation, earthing and bonding works, clean and dirty earthing for equipment's and other MEP services inside IT room.



Emergency Lighting

Installation of Emergency/Exit lighting, both central battery based and Self Contained System.



Leak Detection System:

Installation of water leak detection system for IT rooms with related detectors, cabling and control panel.



PLUMBING & DRAINAGE WORKS

Installation of all types of drainage pipe works (underground, above ground etc.) Installation of sanitary wares and accessories. Installation of water service pipes including copper pipes, PPR and Pressure PVC pipes.





**MEP PROJECTS & FIT OUT WORKS WE
PERFORM**

7. MEP FITOUT JOBS COMPLETED

FIT OUT JOBS EXECUTED – GENERIC STORES

SL #	Job Description	Owner	Service Consultant	Main Contractor
1	MEP Fit out at MCM Shop, The Dubai Mall	MCM	FibrePro Contracting	FibrePro Contracting
2	MEP Fit out at Palzileri, The Dubai Mall	Palzileri	Al Raha Contracting Co	Al Raha Contracting Co
3	MEP Fit out at Cineplex, The Dubai Mall	Emaar	Hyder Consultants	DMJV
4	MEP Fit out at Eclipse, The Dubai Mall	Eclipse	Quad	Al Raha Contracting Co.
5	MEP Fit out at Harman House, The Dubai Mall	Harman House	-	Al Khoory Interiors
6	MEP Fit out at Sony, The Dubai Mall	Sony	Al Raha Contracting Co	Al Khoory Interiors
7	MEP Fit out at Boss, The Dubai Mall	Boss	Marvel	Al Khoory Interiors
8	MEP Fit out at Worood Shop, The Dubai Mall	Emaar	Emaar	Emaar
9	MEP Fit out at Jumbo Electronics, The Dubai Mall	Jumbo	-	Al Khoory
10	MEP Fitout at Ortopus, The Dubai Mall	Dalis Trading		Artisk Interiors

FIT OUT JOBS EXECUTED – GENERIC STORES

SL #	Job Description	Owner	Service Consultant	Main Contractor
11	MEP Fit out at Super care Pharmacy, The Dubai Mall	Emaar	Bluehaus	Al Raha Contracting Co.
12	MEP Fit out at Gold Souk (50 Shops), The Dubai Mall	EMMAR	Various Consultants	Al Mojil Middle East
13	Lancel Boutique, The Dubai Mall	Lancel	CCCP	FibrePro Contracting LLC
14	Plumbing and Firefighting works at Sega, The Dubai Mall	Emaar	Hyder Consultants	Al Mojil Supply & Services
15	Plumbing and Firefighting works at Kidzania, The Dubai Mall	Emaar	Hyder Consultants	Al Mojil Supply & Services
16	Pottery Barn, The Dubai Mall	M H Alshaya	DECO	DECO
17	Plumbing and Firefighting Works at Gourmet, The Dubai Mall	French Department Store LLC	French Department Store LLC	DECO
18	MEP Fit out at Shoe Express, The Dubai Mall	Land Mark	Ebonite Décor	Ebonite Décor
19	MEP Fit Out at Louis Vuitton, The Dubai Mall	Louis Vuitton	Cundall Consulting Engineers	Ebonite Decor LLC
20	MEP Fit Out at Dumond Store, The Dubai Mall	Shoe Tree L.L.C	Ebonite Décor L.L.C	Ebonite Décor L.L.C

FIT OUT JOBS EXECUTED – GENERIC STORES

SL #	Job Description	Owner	Service Consultant	Main Contractor
21	MEP Fit out at Claire De Lune, The Dubai Mall	Claire De Lune	Streamline Electro-mechanical works	Streamline Electro-mechanical works
22	MEP Fit Out at Louis Vuitton, The Dubai Mall	Louis Vuitton	Cundall Consulting Engineers	Ebonite Decor LLC
23	MEP Fit Out at Dumond Store, The Dubai Mall	Shoe Tree L.L.C	Ebonite Décor L.L.C	Ebonite Décor L.L.C
24	MEP Fit out at Claire De Lune, The Dubai Mall	Claire De Lune	Streamline Electro-mechanical works	Streamline Electro-mechanical works
25	MEP Fit out at Emax, The Dubai mall	Lanmark	Emaar	Havelocke, Abu Dhabi
26	MEP Fit out at Noodle House, The Dubai Mall	Hamed Blooshi	Jumeirah Restaurants	Pure Decor
27	MEP Fit out at Mudo City, The Dubai Mall	Mudo City	ARCO	ARCO
28	MEP Fit out at Wizz, The Dubai Mall	EMAAR	Retail Fit UAE	Exposed design consultants
29	MEP Fit out at Toys Store, The Dubai Mall	Toys Store	Squart LLC	Sadeco Decoration Co.
30	Mep Fit out at HUGO BOSS, The Dubai Mall	HUGO BOSS	Baituti Interioirs	Baituti Interioirs

FIT OUT JOBS EXECUTED – GENERIC STORES

SL #	Job Description	Owner	Service Consultant	Main Contractor
31	MEP Fitout at Inplot, The Dubai Mall	Apparel	Shopfit Interior LLC	Shopfit Interiors
32	MEP Fitout at Japengo club, The Dubai Mall	Bin Hendi Enterprises	Baituti Design, Interiors & Architecture	Baituti Interiors
33	MEP Fitout at Breguet Boutique, The Dubai Mall	Rivoli- Breguet	AKASIA Decor, LLC	AKASIA Decor, LLC
34	MEP Fitout at Ulysse Nardin, The Dubai Mall	Bin Hendi Enterprises	Baituti Design, Interiors & Architecture	Baituti Interiors
35	Refurbishment of Candylicious, The Dubai Mall	Candylicious Retail is Detail LLC	Cornerstone interiors	Dutco Balfour Beatty
36	MEP Fit Out at Hallo Kitty, The Dubai Mall	Rio San Beauty Spa LLC	Streamline Electromechanical	Dutco Balfour Beatty
37	MEP Fit Out at Marimeko, The Dubai Mall	Bin Hendi Enterprises	Streamline Electromechanical	Baituti Interiors
38	TVR MEP works at Spinney's, The Dubai Mall	Emaar	-	Emaar
39	TVR Power Modification Works at Entertainment Area, The Dubai Mall	Emaar	Emaar	Emaar
40	TVR works for SF-SPK-14/001 at Jungle Juice, The Dubai Mall	Emaar	Emaar	Emaar

FIT OUT JOBS EXECUTED – GENERIC STORES

SL #	Job Description	Owner	Service Consultant	Main Contractor
41	Cesare Paciotti @ TDM	Osama Shaar Decor	Streamline Electromechanical Works LLC	Streamline Electromechanical Works LLC
42	MSGM @ TDM	Bin Hendi Enterprises	Baituti Interiors	Baituti Interiors
43	Mango @ TDM	Mango	Blueprint Interiors	Blueprint Interiors
44	Roland Mouret @ TDM	Al Abbar Enterprises	AMBB Interiors	AMBB Interiors
45	Obagi Medi Spa @ TDM	Top Solutions	Top Solutions	Top Solutions
46	Roger Dubis Boutique @ TDM	Top Solutions	Streamline Electromechanical Works LLC	Streamline Electromechanical Works
47	Be-Fit @ TDM	Al Khayat Investments	Streamline Electromechanical Works LLC	Streamline Electromechanical Works
48	Bershka @ TDM	Azadea Group	Blueprint Interiors	Blueprint Interiors
49	Pull & Bear @ TDM	Azadea Group	Blueprint Interiors	Blueprint Interiors

FIT OUT JOBS EXECUTED – FOOD AND BEVERAGE @ TDM

SL #	Job Description	Client / contact details	Service Consultant	Main Contractor	Project duration
1	MEP Fit out at Australian Deli Café, The Dubai Mall	Emaar	Aurecon Engineering International	Mice Kraft	90 days
2	MEP Fit out at Noodle House, The Dubai Mall	Hamed Blooshi hh7m@hotmail.com	Jumeirah Restaurants	Pure Decor	90 days
3	MEP Fit Out at Angelina Restaurant, The Dubai Mall	Cravings with Couture LLC Mr. Sachin- 050 1050830	Clarke Samadin Associates	DBB Interiors	100 days
4	MEP Fit Out at Yogurtland, The Dubai Mall	Cravings with Couture LLC Mr. Sachin- 050 1050830	Clarke Samadin Associates	DBB Interiors	45 days
5	MEP Fit Out at Markette Restaurant, The Dubai Mall	Cravings with Couture LLC Mr. Sachin- 050 1050830	Clarke Samadin Associates	DBB Interiors	90 days
6	Sammach Rest at Souq Al Bahar, Down Town	Bin Hendi Enterprises Kaseem 050 8550668	Baituti Design, Interiors & Architecture	Baituti Interiors	90days
7	Karak House @ Emaar Boulevard	Retail is Detail (Al Abbar Group) Sachin- 050 1050830	Clarke Samadin Associates	Dutco Balfour Beatty	60 days
8	MEP Fitout at Newyork Fries, The Dubai Mall	Newyork Fries Priyankara – 056 6080658	NA	Highgate Interior	60 days
9	MEP Fit Out at Gelato Ice Cream, The Dubai Mall	Al Abbar Enterprises Mr. Sachin- 050 1050830	Streamline Electromechanical	Dutco Balfour Beatty	60 days
10	MEP Fitout at Fume Restaurant, Pier 7, Dubai Marina	JAS Group Claudia Nemes- 050 3530623	HIDI Rae	AMBB Interiors	120 days

FIT OUT JOBS EXECUTED – FOOD AND BEVERAGE @ TDM

SL #	Job Description	Client	Service Consultant	Main Contractor	Project Duration
11	Ultra Kitchen @ Emaar Square Bldg 4	Ultra Brasserie Dirk Van de Haar 050-7052636	NA	Creneau International	60 days
12	Japengo Club @ The Dubai Mall	Bin Hendi Enterprises	NA	Reem Interiors	90 days
13	Social House @ TDM	AL Abbar Enterprises Mr. Sachin- 050 1050830	Streamline Electromechanical Works LLC	Dutco Balfour Beauty	90 days
14	Bice Mare Restaurant @ Souk Al Bahar Downtown, Dubai	Bice International Group	Streamline Electromechanical Works LLC	Midtech Interiors	90 days
15	Manga Sushi @ TDM	SGI Hospitality LLC Babita Khatri 55 5575310	Internalline Interior Design	Internalline Interior Design	90 days
16	Vie Café @ Emaar Square		ARCO	ARCO	60 days
17	Costa Café @ Emaar Square	Emirates Leisure Retail	Livewel Interiors	Livewel Interiors	45 days
18	Karak House @ Souk Al Manzil	Retail is Detail Sachin- 050 1050830	RID	Vision Decor	60 days
19	Gunaydin @ Souk Al Bahar	Dogus Group / Compass Project Management Mr. Willam Hitch 050 2851591	Wallace Whittle	Broadway Interiors	120 days
20	Zahr El Laymoun @ Souk Al Bahar	Zahr El Laymoun/ Compass Project Management Mr. Willam Hitch 050 2851591		Broadway Interiors	60 days

FIT OUT JOBS EXECUTED – FOOD AND BEVERAGE @ TDM

SL #	Job Description	Client	Service Consultant	Main Contractor	Project Duration
21	Mighty Quinns @ Dubai Mall	Al Tawfeeq Hospitality LLC	6 inch Interior Fitout	6inch Interior Fitout	90 days
22	Huqqa: The Market @ TDM	Food and Beverage/ Compass Project Management Mr. William Hitch 050 2851591		ARCO International	120 days
23	New Shanghai @ TDM	Azadea Group Marnel 055 7819816	Blueprint Interiors	Blueprint Interiors	90 Days
24	Open Flame Kitchen @ TDM, FAE	Gastronomica Taj 056 2198229	NA	Visiontech Décor LLC	60 Days
25	Reem Al Bawadi- Boulevard (Kitchen Renovation)	MARKA Holdings Ziza Dazi 056 9907492	NA	Streamline Electromechanical Works	90 days
26	Alexander MC Queen @ TDM	Al Tayer Group	ESA Engineering	Blue print Interiors	90 Days
27	Jones The Grocer @ TDM	Al Futtaim Group	Blueprint Interiors	Blueprint interiors	90 days
28	KFC @ TDM	Americana	NA	Scilla Interiors	Ongoing
29	Krispy Kreme @ TDM	Americana	NA	Scilla Interiors	Ongoing

GENERIC STORES

Our works have been specimen of highlight among the various malls and we regard them as premiere in every aspect. We believe in meeting the customer expectation and work towards setting forth a standard across every retail shops, spa, showrooms etc. the work we put across has met every standard and we are well versed in delivering them at all possible angles making our service a standout in the MEP market.



CAFÉ AND RESTAURANTS

We have performed several MEP works which have been varying from Café's to Sushi Counters to Fast food outlets and Multi cuisine Restaurants. We have been very evident in terms of the new trend in the MEP market and our designs have been unique in every aspect. The kind of work we deliver has crossed all prospective barriers and our work has been regarded as the most respected and welcomed among The Dubai Mall, Mal of Emirates, Dubai Marina Mall and Downtown Dubai.



OFFICES

Our MEP designs have become a highlight in terms of acting as a symbol of quality we deliver. Our deliverables in this sector has been looked upon from a different perspective. We have performed several generic works which varies from offices in the form of cubicles to offices with kitchen. Our works have been regarded as signature for many MEP projects and we had been maintaining the standards ever since. Our works include MEP works in Jumeirah Lake Tower, Dubai Marina, Business Bay, Emirates Tower and the list goes on. Some of our works have been highlighted which portrays the definition of the kind of work we perform.



GALLERY(F&B)

Manga Sushi @ TDM (400 Sqm)



Café Bateel @ Arabian Ranches (800 Sqm)



GALLERY(F&B)

Bice Mare @ Souq Al Bahar (600 Sqm)



Fume Restaurant @ Souq Al Manzil (900 Sqm)

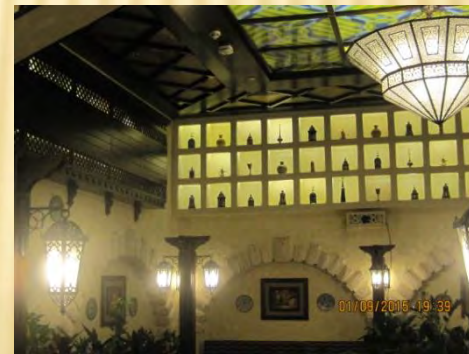


GALLERY(F&B)

Markette Restaurant@ Dubai Mall (800 Sqm)



Reem Al Bawadi Restaurant @ Sahara Center (900 Sqm)



GALLERY(F&B)

McDonalds @ Dubai Parks & Resorts (500 Sqm)



Fuzziwig Candy Factory @ Dubai Parks & Resorts (300 Sqm)

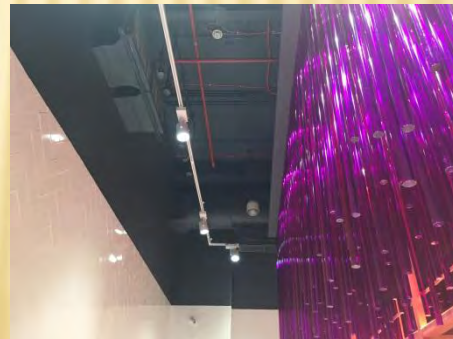
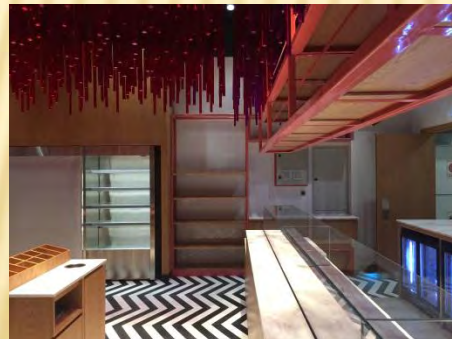


GALLERY(F&B)

Nusret Burger @ Dubai Parks & Resorts (400 Sqm)



Tom's Deli @ Dubai Parks & Resorts (400 Sqm)

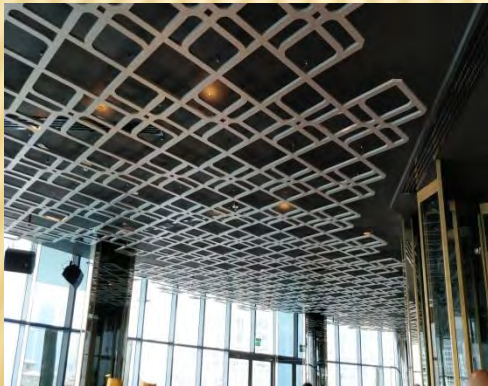


GALLERY(F&B)

Zahr El Laymoun @ Souk Al Bahar (500 Sqm)



Huqqa: The Market @ Dubai Mall (1500 Sqm)

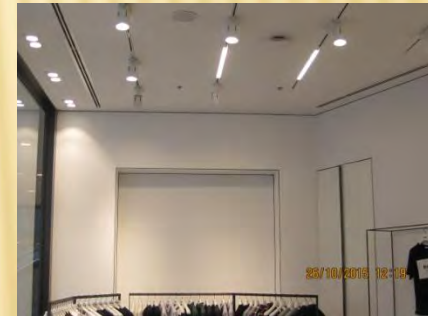


GALLERY(RETAIL)

Cesare Paciotti @ TDM (100 Sqm)



MSGM @ TDM (200 Sqm)



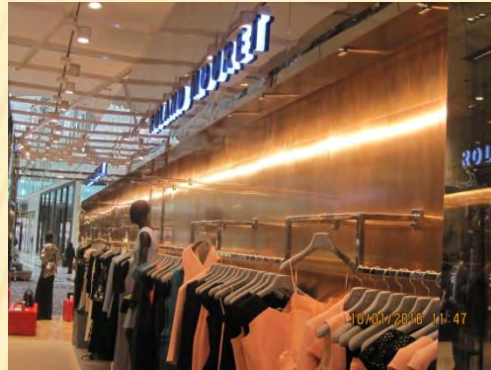
GALLERY(RETAIL)

Zara @ Dubai Mall (4231 sqm)



GALLERY(RETAIL)

Roland Mouret @ TDM (180 Sqm)



Mango @ TDM (600 Sqm)



GALLERY(RETAIL)

Paul & Shark@ MOE (200 Sqm)



Bershka @ TDM (700 Sqm)



GALLERY(RETAIL)

Be-Fit @ Dubai Mall (200 Sqm)



Al Jaber Gallery @ Dubai Mall (150 Sqm)

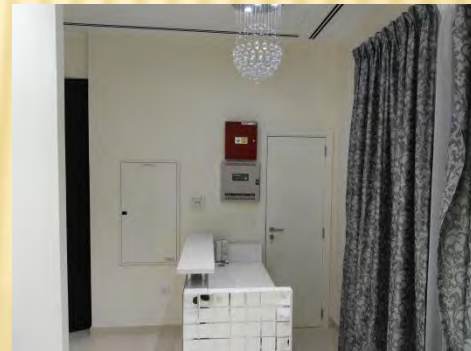


GALLERY(RETAIL)

Pull & Bear @ Dubai Mall (800 Sqm)



Water bike Saloon @ Souk Al Manzil (250 Sqm)



GALLERY(RETAIL)

Tarrab @ Dubai Mall (180 Sqm)

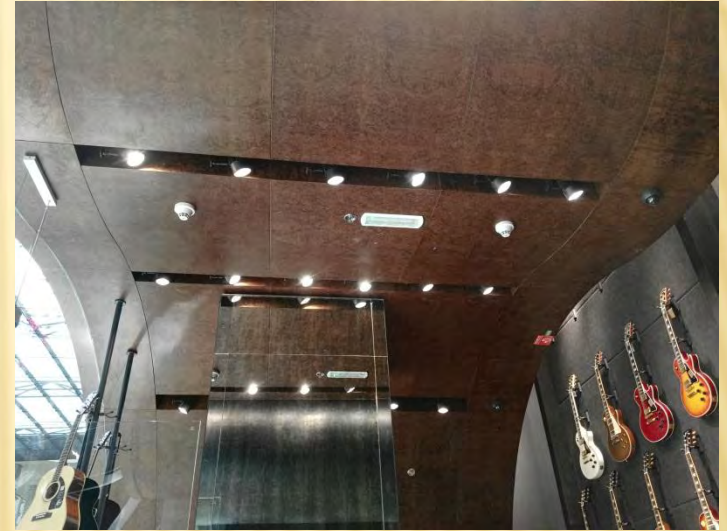


Chez Moe @ Dubai Mall (60 Sqm)



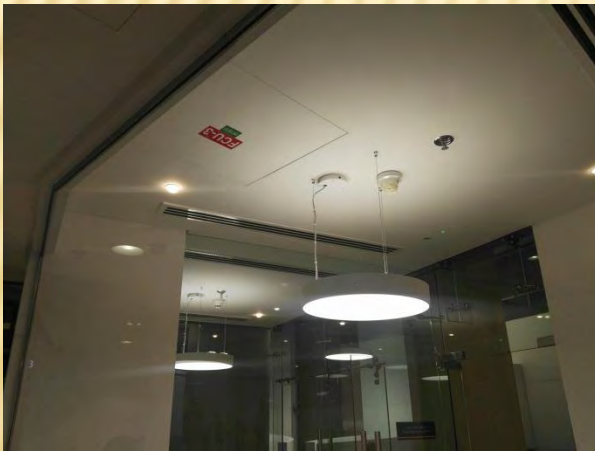
GALLERY(RETAIL)

Sadek Music Center @ Dubai Mall (150 Sqm)



GALLERY(RETAIL)

Emirates NBD @ Dubai Mall (300 Sqm)



GALLERY(KIOSK)

Mr. Pretzel's Kiosk @ Dubai Mall



Yogurtland @ Dubai Mall



GALLERY

Zoom Store, Landmark Bldg, AUH

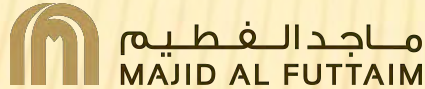


Mall Mart @ Dubai Mall

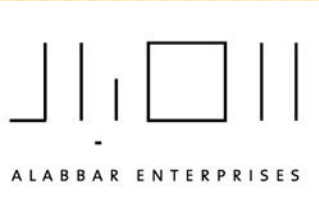


APPROVED CONTRACTORS

We are the approved contractors for performing fit out projects in Emaar Malls, Emaar Hospitality, Al Ghurair Centre, MAF properties, Al Futtaim Real Estates, Dubai Silicon Oasis Authority & under Trakhees Jurisdiction



OUR CLIENTS



& our prestigious partners



& many more...

For further enquiries please contact us

Streamline Electromechanical Works LLC
Al Qusais Industrial Area 5, Warehouse No 6
Opposite Tasjeel
Dubai
UAE

P.O.Box 14749, Tel No: 04 2838414, Fax No: 04 2568838

Email: streamline@streamline.ae

Website: www.streamlinemep.com