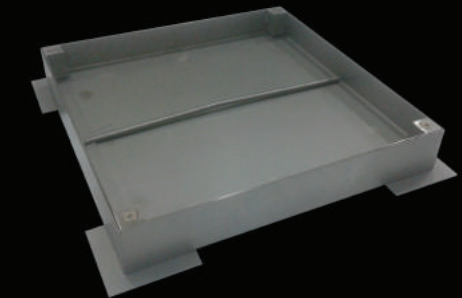
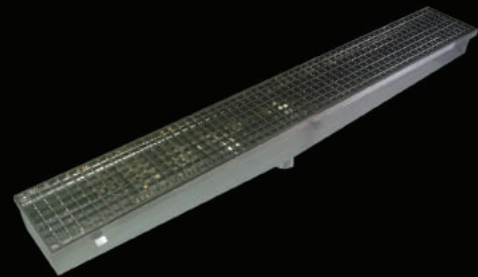




[www.lulufabllc.com](http://www.lulufabllc.com)



AN ISO 9001 : 2008 CERTIFIED COMPANY

- ▶ **OREO**
- ▶ **UK ACCESS**
- ▶ **REN**
- ▶ **JT FAST**
- ▶ **OSTER**
- ▶ **MORE**



# OREO

## Kitchen Equipment & Table Products

Since 1997, we have successfully managed **OREO**, our kitchen division, now a leader in its field. The No.1 supplier of quality kitchen and table products, **OREO** is known throughout the GCC for its high quality products, timely delivery and execution and unparalleled customer service. The company's creative department works with partners in industrial design and experienced manufacturers to ensure that the company is always at the forefront of product development.

Every product of ours is carefully created to the exact standards that our customers require. There is no compromise, no cutting corners and owning our products brings confidence and style to your daily life. We draw on many years of manufacturing experience and our relationship with customers to design items that meet your needs. Extensive research and testing of every part brings you a level of reassurance that will last for many years.



Grade  
SS - 304  
SS - 316

[www.lulufabllc.com](http://www.lulufabllc.com) | [sales@lulufabllc.com](mailto:sales@lulufabllc.com)



For over many years 'UK ACCESS' has earned a reputation for providing the construction industry with affordable quality products. In addition to offering a wide variety of standard styles and sizes, we have the manufacturing capability and engineering know-how to supply custom made products to meet any need of the industry.

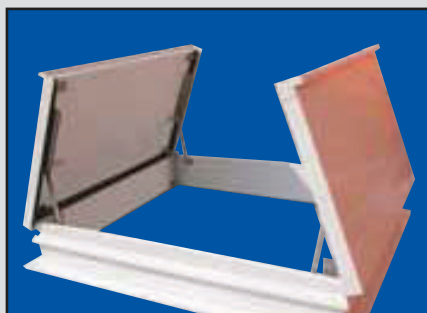
### ACCESS PANELS ► (WALL & CEILING)

- MATERIAL ► Stainless steel, GI., Aluminum
- TYPE ► Flush, Recessed (F/R, Non F/R)
- LATCH ► Screw driver, Uni. Key operated
- HINGE ► Continuous, Concealed
- OPENING ► Spring assisted



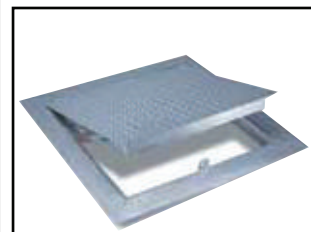
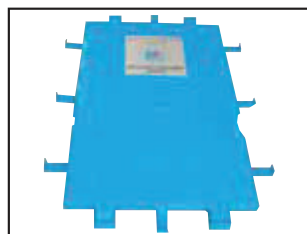
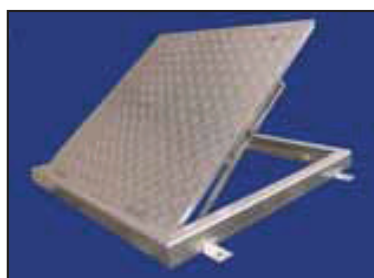
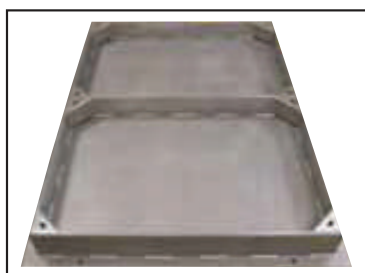
### ROOF ACCESS HATCHES ►

- MATERIAL ► SS, Aluminium, GI
- LATCH ► Self Locking, Pad Lock
- OPENING ► Spring Assisted with hold open arm
- COVER ► Single/Multi leaf – Insulated / Non-insulated
- FRAME ► Insulated, with fixing holes
- FINISH ► Brush/Mill, painted, powder coated



### FLOOR ACCESS COVERS ► MANHOLES & WATER TANK

- MATERIAL ► Stainless steel, GI., Aluminum
- TYPE ► Solid Top, Recessed, Drop In
- LATCH ► Slam Lock, Pad Lock
- HINGE ► SS Butt Hinge with SS fasteners
- OPENING ► Hold Open Arm, Spring
- FINISH ► Mill, Powder /Epoxy Coated







# REN

## SS Drainage Solutions

Our goal is always to provide reliable, effective and quality drainage products and this is achieved by using dedicated pre and posts sales support teams, backed by staff who are regularly trained to ensure a high level of technical expertise. Climate change brings us face to face with challenges to respond to new environmental influences by developing innovative solutions. **REN** stands for professional drainage, economical cleaning, and the controlled release of water. Our systems are designed for the fast and effective drainage of building interiors, we help maintain safety and hygiene in hospitals, industrial kitchens, residences and production facilities



Floor Drain / Traps / Gullies



Rain Water Outlet



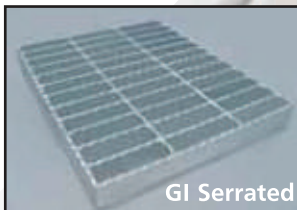
GREASE TRAP



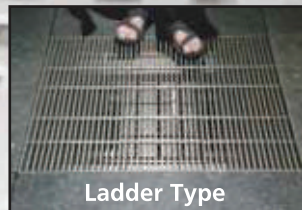
### LINEAR SHOWER DRAINS



### GRATINGS



GI Serrated



Ladder Type

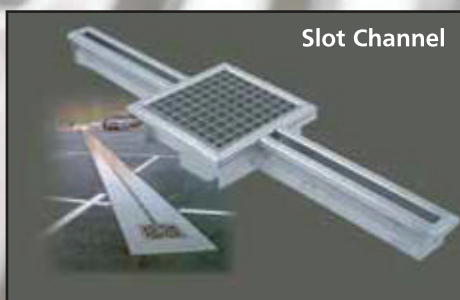


Non - slip



Plain Mesh

### CHANNELS



Slot Channel



SS Floor Channel



**JT FAST** was built on experience, determination, service and quality, earning us an outstanding reputation for manufacturing quality bolt and fastener products in all types of materials. We have what you need to get your project going, or back on track. As a manufacturer, we have the ability to custom fabricate at a moment's notice, ensuring the fastest response time available. We take pride in our dedication to efficiency and would be pleased to support all of your fastener needs.

### STUD BOLTS ▶

Size: Normal Dia : 1/4" to 4" 6-100 mm,  
Length : As Specified  
Grades : ASTM A 193 B7/B7M/B16/B8/B8M;  
ASTM A 320 L7/L7M/B8/B8M; SS304/316



### ANCHOR BOLTS ▶

Type : L, J & Straight type Bolts,  
Nut/Plate Welded, With Sleeve  
Size : Normal Dia : 1/4" to 4" 6-100 mm  
Length : As Specified  
Spec/Standard : ASTM / ASME / BS / DIN / BS EN ISO



### HEX BOLTS ▶

Type : Full /Partial Threads, Heavy Hex Bolts,  
Structural Bolts, Square/ Round Head.  
Size : Normal Dia : 1/4" to 4" 6-100 mm,  
Length : As Specified  
Grades : ASTM A 307 Gr A, Gr B; A325-A325M  
Type 1; A 193 Gr. B7 / B7M / L7,  
BS4190 Cl. 4.6 / DIN 931- 933/ BS3692 Cl. 5.6, 5.8, 6.8, 8.8, 10.9.  
SS AISI 304/ 316 / B8 / B8M Cl. 1 & 2



### U-BOLTS ▶

Type : (U Bolts , Square U Bolts,  
U Clamps)  
Size : Rod Size: 6 to 42 mm,  
Pipe Size: 1/2" To 40",  
Length : As Per Specs.



### NUTS ▶

Type : Hex Nuts, Heavy Hex Nuts, Lock Nuts,  
Nylon Lock Nuts, Jam Nuts,  
Dome Nuts, Toomey Bar Nuts, Square Nuts  
Size : Normal Dia : 1/4" to 4" 6-100 mm  
*\*Tailor made if required.*  
Grades : ASTM A 194 Gr. 2H, 2HM, G4, G7, G7M, A563/  
A563M Gr. A, B, DH / 8S/ 10S. DIN934 / BS3692 Cl.6, 8, 10, 12. BS4395 Part 1 & 2  
DIN6915 Cl. 10, SSAISI 304 / 316. Heavy hex nuts ASTM A194 Gr.8, 8M



### GENERAL SPECIFICATION ▶

Standard : ASTM / ASME / BS / DIN / BS EN ISO  
Material : C.S., M.S., Alloy Steel, Ferritic &  
Austenitic Stainless Steel  
Threads : UNC, 8UN, UNF, Metric Coarse & Fine Series  
Finish : Mill, Hot Dip/Electro Galvanized, Di-Chromated,  
P.T.F.E. Coated  
Washers : Flat/Spring /Taper /Square/ Washers, Special thickness DTI Washer







# OSTER

## Waste Management Products

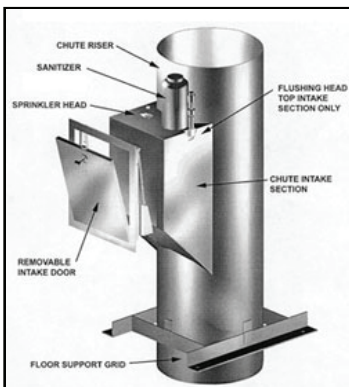
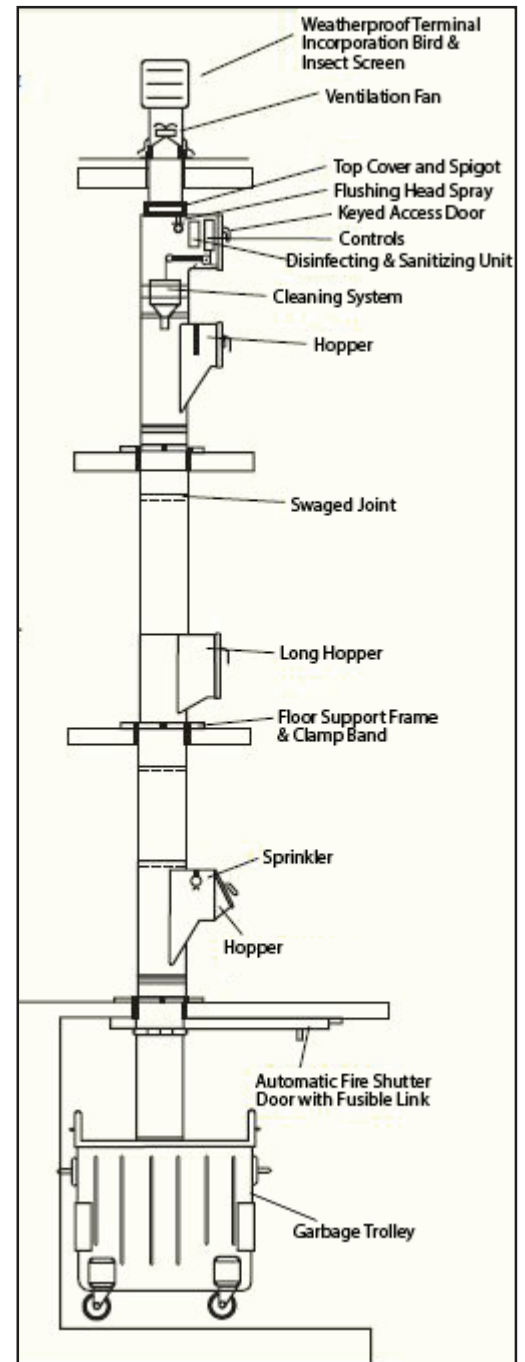
### GARBAGE CHUTE

Garbage/Linen chutes which are robust and tough built is mandatory in all buildings especially in high rise towers to ensure efficient waste management. From selection of materials to the final assembly we take utmost care to manufacture quality garbage chute systems.

Owing to the high quality, our chute systems are widely preferred by building developers and municipal authorities. We are approved and recognized by reputed consultants internationally.

The stainless steel hopper intake doors are placed at every floor for smooth access to dispose garbage. We recommend bottom hinged intake doors which are installed with gas springs to enable automatic closing. The door size required is determined by measuring the largest bag to be fed into the chute. For discharge, a direct open orifice with fire safety shutter door is the industrial standard.

In order to reduce noise and vibration due to impact of garbage items, noise absorbing paint is applied on the chute tube.



### WASTE MANAGEMENT PRODUCTS



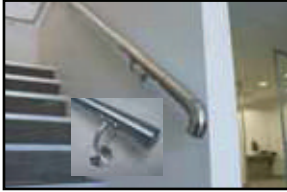


**MORE**

**Arch. & Custom Fabrication**

We stand at the threshold of a new world, a world where dreams are realized and lives are positively impacted. We strive to maintain a focus on people communicating, consulting, advising and completing projects with a human touch. In addition to our focus on people is our continuous commitment to "quality" and "integrity", such that each of our specialized and skilled lines of business provide customers with state-of-the-art products and services each and every time. We invite you to join us on this magnificent journey of innovation and growth.

### Handrails



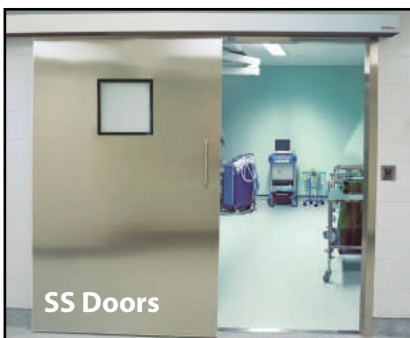
SS Ladders



Fire hose Cabinets



Bollards

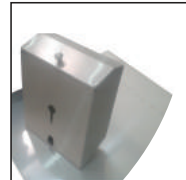


SS Doors



GI Cabinets

### SS Decorative Works



### INDUSTRIAL CONTROL PANELS ► FOR OFFSHORE /ONSHORE PROJECTS





[www.lulufabllc.com](http://www.lulufabllc.com)

- **OREO** - Kitchen Equipment & Table Products
- **UK ACCESS** - Building Access Products
- **REN** - SS Drainage Solutions
- **JT FAST** - Nuts & Bolts
- **OSTER** - Waste Management Products
- **MORE** - Arch. & Custom Fabrication

*Specialized in:*

STAINLESS STEEL

GALVANIZED STEEL

ALUMINIUM

**LULU AL JAZEERA W&S LLC.**



P O Box 40485  
Sharjah - United Arab Emirates



+971 6 534 8838



[sales@lulufabllc.com](mailto:sales@lulufabllc.com)



[www.lulufabllc.com](http://www.lulufabllc.com)

