



## AL HAQIQAH AUTOMATIC DOORS

Industrial Area No.14, Mowaileh

P.O Box : 72032, Sharjah - U.A.E

Mobile : 971 50 368 6090 / 971 55 855 0446

Tel : 971 06 535 4492, Fax: 971 06 535 4493

Email : alhaqiqahdoors@gmail.com

ahaddoor@eim.ae



## الحقيقة للابواب الاتوماتيكية

المنطقة الصناعية رقم ١٤، المويج

ص.ب : ٧٢٠٣٢ ، الشارقة، ا.ع.م.

متحرك : ٩٧١ ٥٠ ٣٦٨ ٦٠٩٠ / ٩٧١ ٥٥ ٨٥٥ ٠٤٤٠

هاتف : ٩٧١ ٠٦ ٥٣٥ ٤٤٩٢

فاكس : ٩٧١ ٠٦ ٥٣٥ ٤٤٩٣



- ◆ Doors & Automation
  - ◆ Residential Doors
  - ◆ Commercial Doors
  - ◆ Sliding Gate Operator
  - ◆ Swing Gate Operator
- ◆ Traffic Barriers
- ◆ Automatic Entrance Door
- ◆ Biometric Access Control System
- ◆ Access Control System
- ◆ Security System
  - ◆ Interphone
  - ◆ Video Door Phone System
- ◆ Security System
- ◆ CCTV Camera
- ◆ Tracking System
- ◆ Cast Aluminium Products
  - ◆ Gates
  - ◆ Sandwich Panel Gates
  - ◆ Staircase Railinings
  - ◆ Balcony Railings
  - ◆ Fencing
  - ◆ Shades
  - ◆ Balusters



We are pleased to introduce ourselves as one of the most reliable automation company based in Sharjah, engaged in the supply and installation of remote controlled garage doors, gate / door automation systems, access control systems and all type of cast aluminium products such as gates, railings etc.

We are a committed group and are in the field since 2006 and have achieved considerable growth, in the process with distinct style and professionalism. We have learned from the past that a committed work force is essential for the purpose of executing any project.

Within the short span of time, with the achieved reliability and trust from the market, we have executed many good projects of reasonable size and volume. Our administrative and technical team is capable enough to undertake any type of sub contract work in our line of activity, as per your requirement within the specified time and schedule.

We are looking for an opportunity to meet you in person and to associate with you in your on going and up coming projects.



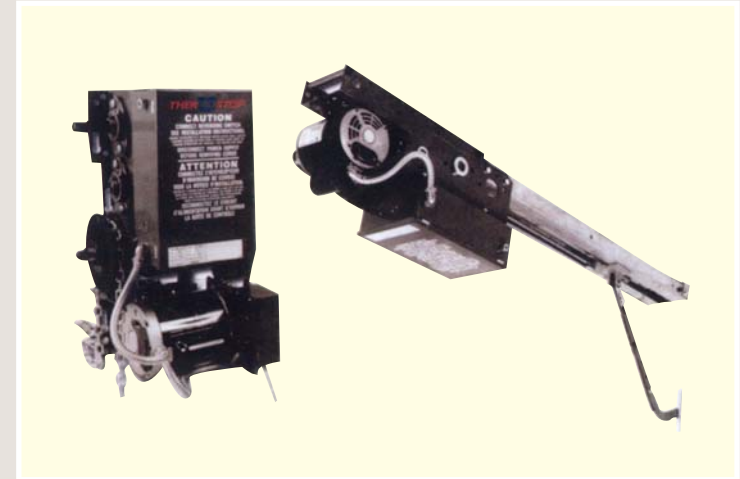
# Doors & Automation

## Residential Doors





Commercial / Industrial Door



Commercial Door Motor



Garage Motor



Rollup Shutter



# Doors & Automation

## Sliding Gate Operator



### OPERATOR

### DEIMOS SR

Single-phase power supply	230 V $\pm$ 10%, 50 Hz
Absorbed power	290 W
Thermal protection	integrated
Max. leaf weight	5000 N (-500 Kg)
Output revolutions	48 mirr <sup>-1</sup>
Pinion pitch	4 mm (14 teeth)
Leaf speed	8.5 m/min
Impact reaction	mechanical clutch
Manual manoeuvre	mechanical release through special knob
No. manoeuvres in 24 hours	100
Control panel	ALPHA
Type of limit device	electromechanical or inductive
Environmental conditions	from -15°C to +60°C
Degree of protection	IP24
Operator weight	15kg
Dimensions	see drawing

### OPERATOR

### DEIMOS 700

Single-phase power supply	230 V $\pm$ 10%, 50 Hz
Absorbed power	290 W
Thermal protection	integrated
Max. leaf weight	7000 N (-700 Kg)
Output revolutions	48 mirr <sup>-1</sup>
Pinion pitch	4 mm (14 teeth)
Leaf speed	8.5 m/min
Impact reaction	mechanical clutch
Manual manoeuvre	mechanical release through special knob
No. manoeuvres in 24 hours	100
Control panel	ALPHA
Type of limit device	electromechanical or inductive
Environmental conditions	from -15°C to +60°C
Degree of protection	IP24
Operator weight	15kg
Dimensions	see drawing

### OPERATOR

### BULL - 8

Single-phase power supply	230 V $\pm$ 10%, 50 Hz
Motor	24Vdc
Absorbed power	SOW
Max. leaf weight	12000 N (-1200 Kg)
Output revolutions	39 mirr <sup>-1</sup>
Pinion pitch	4 mm (18 teeth)
Leaf speed	9 m/min
Impact reaction	electronic torque limiter
Manual manoeuvre	mechanical knob release with personalised key
No. manoeuvres in 24 hours	120
Control panel	QSC D MA
Type of limit device	electromechanical or inductive
Environmental conditions	from -15°C to +60°C
Degree of protection	IP24
Operator weight	200 N (-20 KG)
Dimensions	see drawing

- Easy to install and new PHOBOS design, irreversible operator.
- Safe and Simplified release manoeuvre, with BFT key.
- Long piston stroke to drive very long swing gates.
- Residential use.
- Adjustable Fixing bracket -Model SFR L ( Optional).



### Operator

### RESIDENTIAL

Absorbed power	210W
Thermal protection	Integrated
Max. leaf weight	2500N
Max. Leaf length	5m ( with electric Lock), 3m(without electric Lock)
Rod working stroke	458 mm
Rod speed	13mm/sec
Impact reaction	Electronic Clutch on control panel
Manual manoeuvre	Release key CLS
No manoeuvres in 24 hours	60
Environmental conditions	From -10°C to +50°C
Degree of protection	IPx4
Operator weight	77N(~7,7 kg)
Dimensions	See Figure

- Ideal for residential gates: ORO , thr hydraulic operator for swing leaves, is available in two versions, irreversible on closing (ORO) and reversible (ORO E)
- Compact shape and maximum piston sturdiness.
- Antisquashes safety thanks to two adjustables by - pass valves.
- Simple and practical manual Opening with actuator release, by means of a key (ORO) or electric lock release (ORO E)
- Hydraulic lock to guarantee that the gate is held closed (ORO)



### Operators

### HEAVY DUTY - COMMERCIAL

Single-phase power supply	230V ± 10%, 50 Hz	230V ± 10%, 50 Hz
Absorbed power	240W	240W
Thermal protection	Integrated	Integrated
Max. leaf weight	1800N (~180kg)	2000N (~200kg)
Leaf length	1,80m	2,50m
Rod working stroke	250 mm	250 mm
Rod speed	12mm/s	8mm/s
Opening or closing time	20 sec	27 sec
Impact reaction	hydraulic clutch	hydraulic clutch
Type of lock	hydraulic on closing	electric lock
Manual manoeuvre	release key	reversible
N° manoeuvres in 24 hours	60	60
Environmental conditions	from -10°C to +60°C	from -10°C to +60°C
Degree of protection	IP55	IP55
Operator weight	53N (~5,3 kg)	53N (~5,3 kg)
Dimensions	see drawing	see drawing





# CALL

- Four-channel receiver connected to a GSM module which makes it possible to use the device by means of a mobile phone
- Control of 4 automations without limits of distance: one channel can be activated by an interrupted call (zero cost) all four channels can be activated by sending an SMS to the device
- Additional input usable as an alarm device: Call advises the telephone number(s) assigned to this function with a call
- The settings linked to the telephone numbers (store/delete/change settings) and the storage of the rolling-code transmitters are possible without accessing the control panel and without the necessity for the operator to go out, as they can be done via cell phone
- The input for buffer battery with 12 Vdc (optional) with integrated recharge control guarantees operation of the receiver even during a power cut



- Safe, efficient and reliable, the MOOVI electronic barrier for intensive use is suitable for closing off private areas and car parks.
- Compact and self-cooling MOOVI is provided with fast release by means of a personalised key in case of emergency
- Control panel incorporated MOOVI is available in medium and high-speed versions in relation to its boom
- Slowdown during opening and closing (Mod. MOOVI 30S et MOOVI 30/50 RMM)
- Highly corrosion resistant frame ready for fitting with accessories.
- New design and wide range of accessories.
- Galvanized and painted casing

## Operators

Single-phase power supply  
Absorbed power  
Thermal protection  
Max. leaf weight  
Opening/closing time  
Type of lock  
Manual manoeuvre  
  
Type of limit switches  
Control unit  
Environmental conditions  
Degree of protection  
Operator weight without the rod  
Dimensions

## MOOVI 30

230V~ ± 10%, 50 Hz  
300W  
integrated  
3m  
4S  
mechanical dosing/opening  
fast release by means  
of a personalised key  
electric, incorporated, adjustable  
ALPHA BOM  
-10°C à +50°C  
IP24  
360N (-36 kg)  
see drawing

## MOOVI 50

230V~ ± 10%, 50 Hz  
300W  
integrated  
5m  
8S  
mechanical closing/opening  
fast release by means  
of a personalised key  
electric, incorporated, adjustable  
ALPHA BOM  
-10°C à +55°C  
IP24  
360N (-36 kg)  
see drawing

## Operators

Single-phase power supply  
Absorbed power  
Thermal protection  
Max leaf Length  
Opening/closing time  
Type of lock  
Manual manoeuvre  
  
Type of limit switches  
Control unit  
Environmental conditions  
Degree of protection  
Operator weight without the rod  
Slow down  
Control  
Dimensions

## MOOVI 30S

230V~ ± 10%, 50 Hz  
300W  
integrated  
3m  
1,5/s + slow down  
mechanical closing/opening  
fast release by means  
of a personalised key  
electric, incorporated, adjustable  
LEO MV  
(ric. rolling code 64-cod incorp.)  
-10°C à +55°C  
IP24  
360N (-36 kg)  
Adjustment  
by encoder  
see drawing

## MOOVI 30/50 RMM

230V~ ± 10%, 50 Hz  
300W  
integrated  
3 m (MOOVI 30); 5 m (MOOVI 50)  
4 s (MOOVI 30); 8 s (MOOVI 50)  
mechanical closing/opening  
fast release by means  
of a personalised key  
electric, incorporated, adjustable:  
LEO MV  
(ric. rolling code 64-cod incorp.)  
-10°C à +55°C  
IP24  
360N (-36 kg)  
Adjustment  
by encoder  
see drawing

## Proximity Cards & Reader



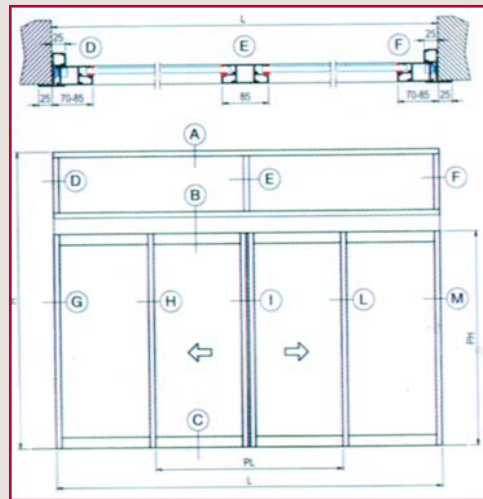
## Remote Control



## Access With Anti Pass Back Facility



# Automatic Entrance Door



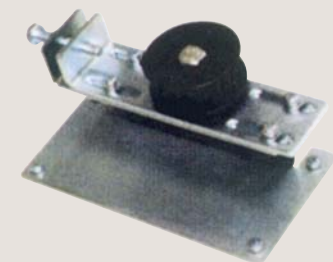
DC Brushless Motor  
(with / without lock)



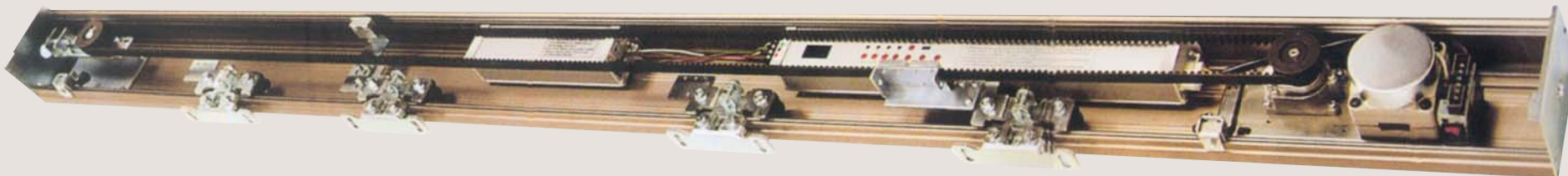
Micro - Computer Controller

Remote Controller for Multi-Funtions

- Normal
- Exit Only
- Hold Open
- Hold Close
- Partial Open 50%.65%.80%



Idler Pulley



Sliding Door Operator



# Biometric Access Control Systems



## Features

Usercapacity	:	1500/2800
Transaction	:	50000/120000
Verification Mode	:	Version 2005
Electro Control	:	Directness relay output 3A/12VDC
Communication	:	RS232, RS485, TCP/IP (UDP Protocol)
Keypad or Display	:	LCD with 80 Character and figure keypad
Power	:	9-24V DC, stay current 0.50 mA, Work Current 400 mA
Validating Speed	:	<=2s
FRR	:	<=0.0001%
FAR	:	<=1 %
Optional	:	MifareCard
Sensor	:	ZK Sensor
Operating Temperature	:	0°C ~ 45°C
Operating Humidity	:	20% ~ 80
Language	:	English, Korean, Traditional Chinese, Taiwanese
Size	:	184(L)X142(W)X50(H)mm

## Specifications

- ♦ Version 2005 of algorithms with dependability and accuracy, identification speed obviously improved, process 3000 fingerprint, no matter good or poor, with in 2 seconds.
- ♦ Built in strong Intel 32 bit fingerprint embedded standalone modul (ZEM 100). It is easy to integrate with various systems
- ♦ Support finger 360 degree identification, easy to use
- ♦ Sensor window cotin improving image quality, accepts, wet fingers
- ♦ CMOS automated exposure and intelligent compensation
- ♦ Improved image quality, adjusting image distortion, assure fingerprint matching consistency



## Features

- Standard industrial STN 128 x 64 LCD
- Each user can register 3 separate sets of fingerprints.
- No card or ID necessary for fingerprint matching.
- Maximum capacity of proximity main system is 4000 cards.
- Backlight 16 (4x4) luminous stainless tell keypads
- Build in Time & Attendance function.
- Optical-base reader
- Polycarbonate fireproof material for casing (white or dark gray)

## Electric Lock Series





## ADVANCED SCALABLE NETWORKED ACCESS CONTROLLER

### ELECTRICAL CHARACTERISTICS

- ACU Power Supply Voltage : 12VDC, regulated from built-in 14 regulated power supply / Charger module
- ACU Power Supply Max Current : Panel output: 500mA input current limitation (PS-14)  
Lock output: 1500mA, Battery output: 300mA
- Relays : 4 fully programmable 5A, N.O. and N.C. relay outputs  
4 expandable outputs with optional MD-IO84
- Battery Charger : 12V sealed lead acid (SLS) up to 7 Ah (PS-14)
- Maximum Current for Readers : 300mA at 12VDC

### OPERATIONAL CHARACTERISTICS

- Capacity : 30000 Users
- History Event Log Size : 20000 Events
- Inputs : 4 Supervised, dual-resistor, 4 state end-of-line inputs, Hi-impedance, active low 5VDC 8 expandable inputs with optional MD-IO84
- Readers : Two Wiegand 26/32/34/37/40 bit / C&D reader ports with tamper and LED control, 4,6 and 8 bit burst keypad transmission support
- Connectivity : RS-485/232, Dial-up (using MD-N33), onboard TCP/IP (AC-225IP version)
- Networking : 32 Units/subnet, 1000 subnets (2000 doors max.) using AS-225 software
- Audio/Visual : Built-in sounder (Alarm, Chime, Bell), 11 on-board and 3 P.S. LEDs
- Modes of Operation : Single Door (In/In), Dual Door (In/Out)
- Time Zones and groups : 32 multiple segment time zones, 64 holidays, 1000 access groups
- Anti-Pass Back : Local and Global anti-pass back (soft / hard), with 'forgive' option
- Special Features : Interlock, first person delay, auto relock, scheduled outputs operation, 4 programmable site codes, Extended unlocked time, fully interconnectedness.
- Security Modes : Normal and Secure
- Firmware Upgrade : Local / Remote, Through AS-225 PC software

### PHYSICAL CHARACTERISTICS

- ACU Board Dimensions : 168mm x 212 mm (6.61" x 4.76")
- Enclosure : Metal, locked 326mm x263mmx97mm(12.8"x10.4x3.82")
- Weight : 2.4kg (5.3lbs)

### ENVIRONMENTAL CHARACTERISTICS

- Operating Environment : Indoor installation only
- Operating Temperature : 0°C to 43°C (32°F to 120°F)
- Operating Humidity : 0 to 85% (non-condensing)
- RFI Protection : >20 V/m up to 1000 MHz



## SYSTEMS COMPONENTS





## TP-90AN

Electronic interphone with expandability up to 90 phones (TP-90AN)  
Group call, broadcasting and displaying caller-id functions.

Power Supply: DC 24V(RF-2A)  
Wiring: Common 10 wires (5P), Max. 90 units  
communication distance : 1 Km / Speaker-phone function / Full-triple communication  
Available to check the caller (station) / Broadcasting function  
/ secret talking

## TP-12RC

Master-sub Inter Phone  
Noiseless master interphone expandable up to additional 12 subphones(TP-K)  
Max. Slave 12 units (TP-K) for 1 Master(TP-12AM)

Connectable Product: TP-K  
Power Source: DC 24V(RF-2A)  
Wiring: 2 wires per 1 slave

## TP-K

Interphone Sub Station  
Apt Phone noiseless sub-phone while communicating with guard station / Residential station.  
Talk with the Guard Station /Talk between Residential stations

Connectable Product: TP-12AM

## TP-1BE1BS|1BD

Hotline Type Interphone  
Interphone with built-in Matching trance usable both in and out of building

### TP-1BE

Mutual call/Talk function  
TP-1BS  
2 Wire/AC 220V

### TP-1BS

As a sub ofTP-1BE/BD  
TP-1BE.TP-1BD  
2 Wire

### TP-1BD

Mutual call/Talk function  
TP-1BS  
2 Wire/  
Battery DC 6V

## TP-nAC (12AC/6AC)

Interphone available for Conference  
Function & broadcasting with expandability being connectable to door station.  
Talk between residential stations/for use of table or wall / Broadcasting Function/Max. 12 units

Connectable Product: TP-nAC / DR-DW2N) /  
Wiring: Common 4 Wires  
Power Source: DC 12V



# Security Systems

## Video Door Phone System

### B/W VIDEO DOOR PHONE



#### B/W Video Door-Phone(Multiple)

APV- 480L / AP - 480AL

Home Automation With Video Door-phone System

B/W Video Door-phone easy to do wiring and talk with guard station, along with security functions:

- \* High Resolution /Display (4" B/W Flat CRT)
- \* Guard room / Security (Burglar) / Surface Mount Type Entrance (Individual/ Common)

Control System: Talk Digital Circuit / Full-Duplex

Power Supply: AC 100-240V/ 14W

#### APV - 4CME/2 / AP-2RS

Multiple house Video Door-phone available with two camera connection.

APV-4CME/2 | 4CMD/2 :

- \* High Resolution / Display(4" B/W Flat CRT)
- \* Surface Mount Type
- \* Entrance (Individual/ Common) / Door Release / Digital Circuit

AP-2RS :

- \* Talk with the Entrance / Common Entrance / Door Release

System Capacity: APV-4CME/2 4CMD/2 : Common 1 x Entrance, Individual 1 x Entrance

Power Supply: APV-4CME/2 | 4CMD/2 : AC110-220V(Free Volt) / 15W AP-2RS : DC24V / 1A

### B/W DOOR CAMERA



### COLOUR VIDEO DOOR PHONE



#### CDV-50|50D(DC)

Home Automation System of Individual House

Providing high-definition display with Color LCD monitor, this item will give you satisfaction with easy installation and simple necessary function.

#### Features:

Control System/Talk Digital Circuit / Full-Duplex

Power Supply/Power Consumption AC100~240V(Free Volt) / 18W

5 TFT Color LCD/ Individua Entrance / Surface Mount Type / Sub-phone Connectable  
Door Release / Monitor a vistor check

#### CAV-501

5" Color TFT LCD, CAV-501 of hands-free type providehome automation & security system. It provides fast connection to the security office, and various convenient functions.

#### Features:

5 Color TFT LCD

Flush Mount Type

Hands-free/Telephone/ Door Answering & Monitoring

Door Release/ Guard Station Talk (CLS-10 Only) /

Security (Burglar, Fire, Gas-Leakage) / Emergency Alarm

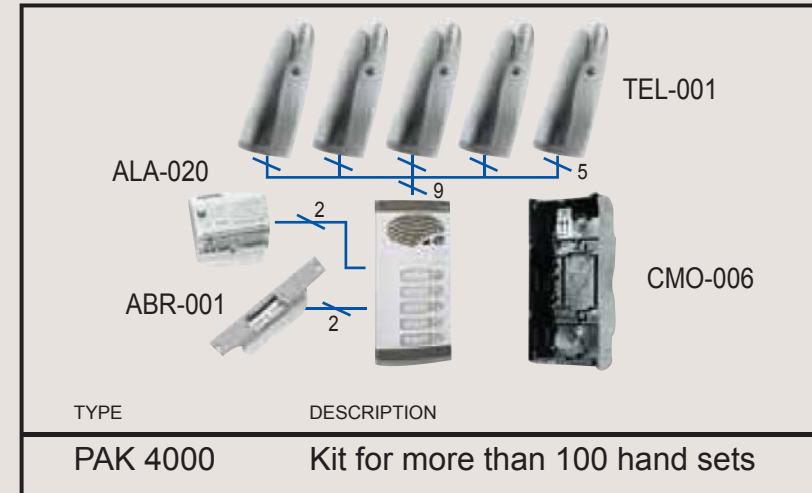
### COLOUR CAMERA





## Door Stations

TV Door Entry System is designed to complement existing electronic door entry systems in Buildings and flats. The TV Door Entry System, tapping into the distribution of the collective signal of the building and using the video cameras installed at the different points of entry, allows you to visualise the person who is calling clearly and distinctly by simply changing your television channel. Without having to move from your television set, you will know who is at your door and whether or not the call is worth getting up to answer.







OPERATOR	PR-433SD
Image Sensor	: 1/4" Sony CCD
Signal System	: PAL / NTSC
Video Output	: 1.0Vp~p 75 ohm BNC
Scan Model	: Interleaved 2 : 1
Resolution	: 480 TVL
Min Illumination	: 0.3 Lux
Lens	: 3.6mm
S/N Ratio	: >48dB
Shutter	: 1/60~1/100,000s
White Balance	: Auto
Gain Control	: Auto
Storage Temp	: -20°C ~ +60°C
Power	: DC 12V
Temperautre	: -10°C ~ +50°C
Audio	: Yes

OPERATOR	
Image Sensor	: 1/3" Sharp CCD
Signal System	: PAL / NTSC
Video Output	: 1.0Vp~p 75 ohm BNC
Scan Model	: Interleaved 2 : 1
Resolution	: 480 TVL
Min Illumination	: 0.1 Lux
Lens	: 3.6mm
S/N Ratio	: >50dB
Shutter	: 1/60~1/100,000s
White Balance	: Auto
Gain Control	: Auto
Storage Temp	: -20°C ~ +60°C
Power	: DC 12V ±10% 150mA
Temperautre	: -10°C ~ +50°C
Audio	: Optional

OPERATOR	PR-128M
Image Sensor	: 1/4" Sony CCD
Signal System	: PAL / NTSC
Video Output	: 1.0Vp~p 75 ohm BNC
Scan Model	: Interleaved 2 : 1
Resolution	: 480 TVL
Min Illumination	: 0.3 Lux
Lens	: 3.6mm
S/N Ratio	: >48dB
Shutter	: 1/60~1/100,000s
White Balance	: Auto
Gain Control	: Auto
Storage Temp	: -20°C ~ +60°C
Power	: DC 12V
Temperautre	: -10°C ~ +50°C
Audio	: Yes

OPERATOR	PRD-7000 / PR-7000
Image Sensor	: 1/3" Sony Super HAD CCD
Signal System	: PAL / NTSC
Effective Pixels	: PAL: 768x494 ; NTSC 752x582
Resolution	: 520 TVL Color ; 570 TVL B/B
Min Illumination	: 0.7 Lux / F1.8 (50 IRE) Color ; 2,02 Lux / F1.8 (50 IRE) B/W
S/N Ratio (Y)	: >50dB (AGC Off)
Focus	: Auto / Manual / One Push
Digital Zoom	: 100x Zoom (10x Optical; 10x Digital)
Zoom Speed	: NTSC: 1.67s wide to tele; PAL: 1.75s wide
Focus Length	: f=3.8 ~ 38mm
Day & Night	: Auto 1, Auto 2, Color, B/W (ICR)
Gain Control	: Normal, High, Off Selectable
White Balance	: ATW/AWC/Manual (1800° K-10,500° K)
Man Speed (P/T)	: Low/Middle/High/Off Selectable
Auto Speed (P/T)	: Min: 1.5° /s, Max: 120° /s
Pan Range	: Min: 1.5° /s, Max: 240° /s
Tilt Range	: 360°
Preset Location	: 0~90°
360° Run Mode	: 160 Present
OSD System	: Setup parameter setup title XY position Auto clear screen
Operating Temp	: -10°C~50°C / 0%~80% RH
Water-Proof	: IP-65
Power Supply	: DC 12V / 1.5A
Dimensions	: 160x151mm



## OPERATOR

Detecting Range	12m	12m	≤30m	12m
DEctecting Angle	110°	110°	110°	90°
Battery	1*6F22 carbon cell	1*6LR61 alkaline cell	“3*AA alkaline cell	“3*AA alkaline cell
Working Voltage	DC9V	DC9V	DC9V	4.5V
Operation Current	≤15mA	≤15mA	≤15mA	≤15mA
Static Current	≤500uA	≤500uA	≤30uA	≤15uA
Operation Temperature	-10°C ~ +50°C	-10°C ~ +50°C	-10°C ~ +50°C	-10°C ~ +50°C
Mounting Type	Wall mounted	Wall mounted	Wall mounted	Wall mounted
Mounting Height	2.2m	2.2m	2m	2.2m
Pet Immunity				25KG
Pulse Count	1P or 2P optional	1P or 2P optional	1P or 2P optional	1P or 2P optional
Transmitting Frequency	315MHz/433MHz	315MHz/433MHz	433MHz/868MHz	433MHz/868MHz
Size (mm)	114*60.5*41	114*60.5*41	113*55*38	113*55*38

The GPS vehicle tracking and historical reporting solutions offered by Vehicle Tracking Solutions allow you to be a silent passenger in all your vehicles, ensuring your clients the highest level of service.

Our vehicle tracking systems can have a remarkable impact on your business. Efficient monitoring of your cars, trucks and other vehicles will keep you informed as to your fleet's whereabouts, giving you the insight you need to enhance your competitive edge.

## Features

- Lower fuel costs
- Reduced overtime pay
- Boosted profits
- Increased employee productivity
- Efficient dispatching



G 01



G 02



G 03



G 04



G 05

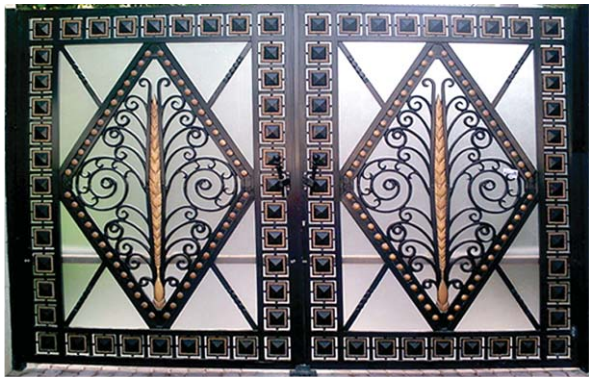


G 06





# Cast Aluminium Products Gates



G 07



G 08



G 09



G 10

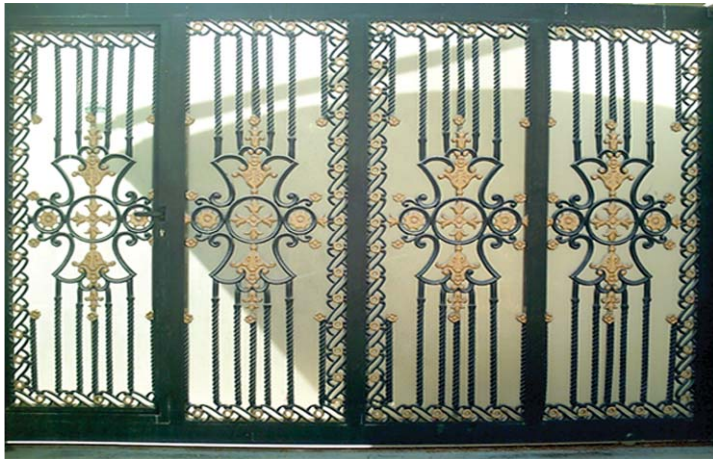


G 11



G 12





G 13



G 14



G 15



G 16



G 17

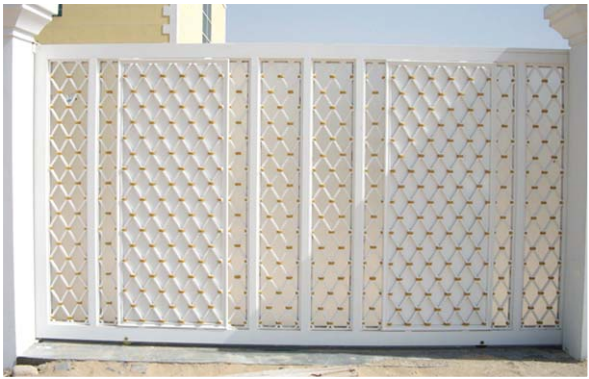




# Cast Aluminium Products Gates



G 18



G 19



G 20



G 21



G 22



G 23





G 24



G 25



G 26



G 27



G 28



G 29



# Cast Aluminium Products Gates



G 30



G 31



G 32



G 33



G 34

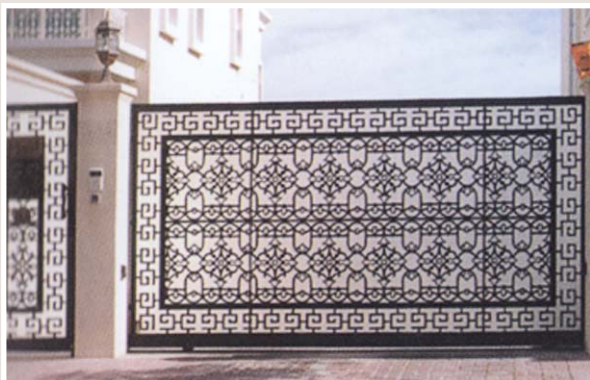




G 35



G 36



G 37



G 38



G 39



# Cast Aluminium Products Gates



G 40



G 41



G 42



G 43

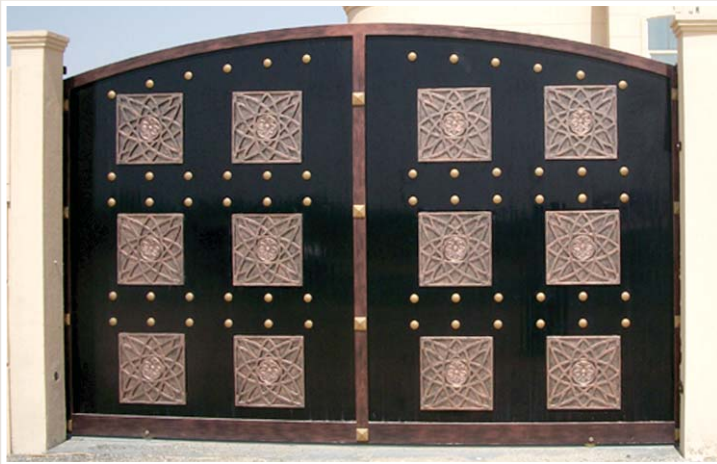


G 44



# Cast Aluminium Products

## Sandwitch Panel Gates



SG 01



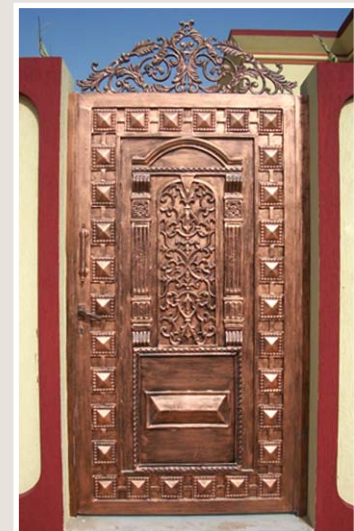
SG 02



SG 03



SG 04



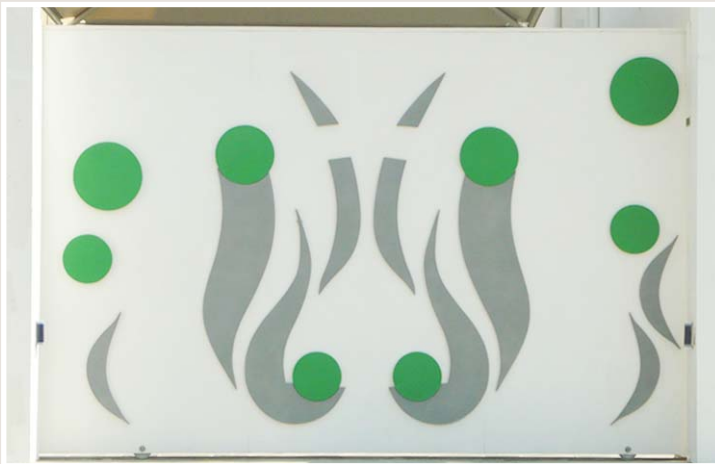
SG 05



SG 06



SG 07



SG 08



SG 09





SG 10



SG 11



SG 12



SG 13



SG 14



# Cast Aluminium Products

## Staircase Railinings



SR 01



SR 02



SR 03



SR 04



SR 05



SR 06



# Cast Aluminium Products

## Staircase Railings



SR 07



SR 08



SR 09



SR 10



SR 11



# Cast Aluminium Products

## Staircase Railinings



SR 12



SR 13



SR 14



SR 15



SR 16



SR 17



# Cast Aluminium Products

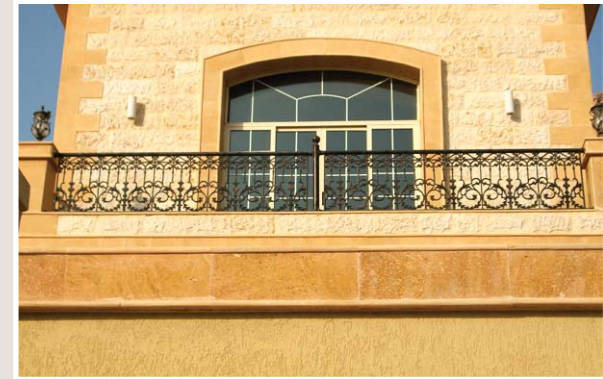
## Balcony Railings



BR 01



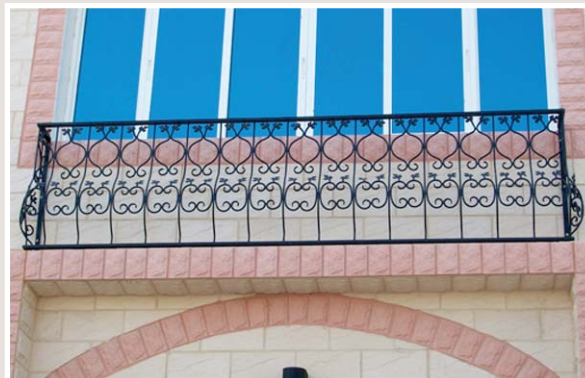
BR 02



BR 03



BR 04



BR 05



BR 06



# Cast Aluminium Products

## Balcony Railings



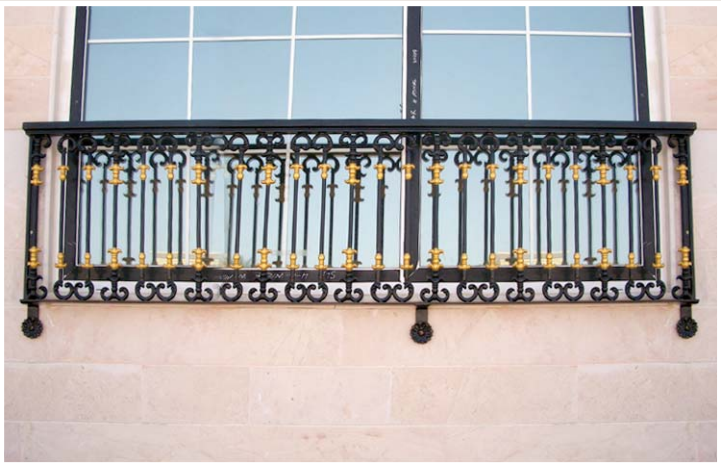
BR 07



BR 08



BR 09



BR 10



BR 11





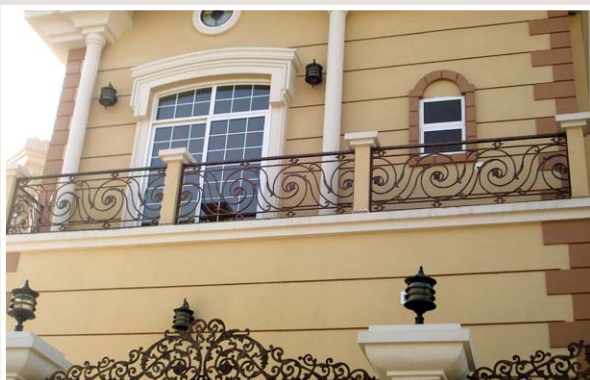
BR 12



BR 13



BR 14



BR 15



BR 16



BR 17



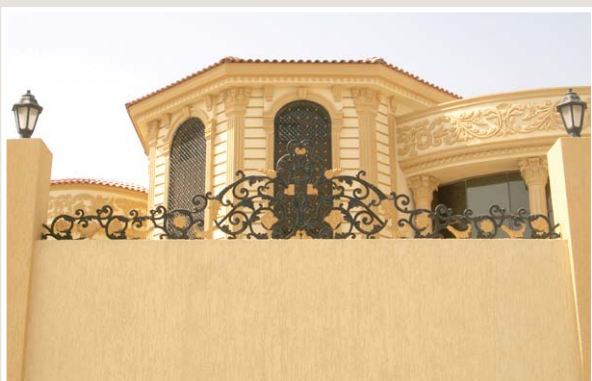
F 01



F 02



F 03



F 04



F 05



F 06





# Cast Aluminium Products Fencing



F 07



F 08



F 09



F 10



F 11



F 12



F 13



F 14



F 15



F 16



F 17





S 01



S 02



S 03



S 04



S 05

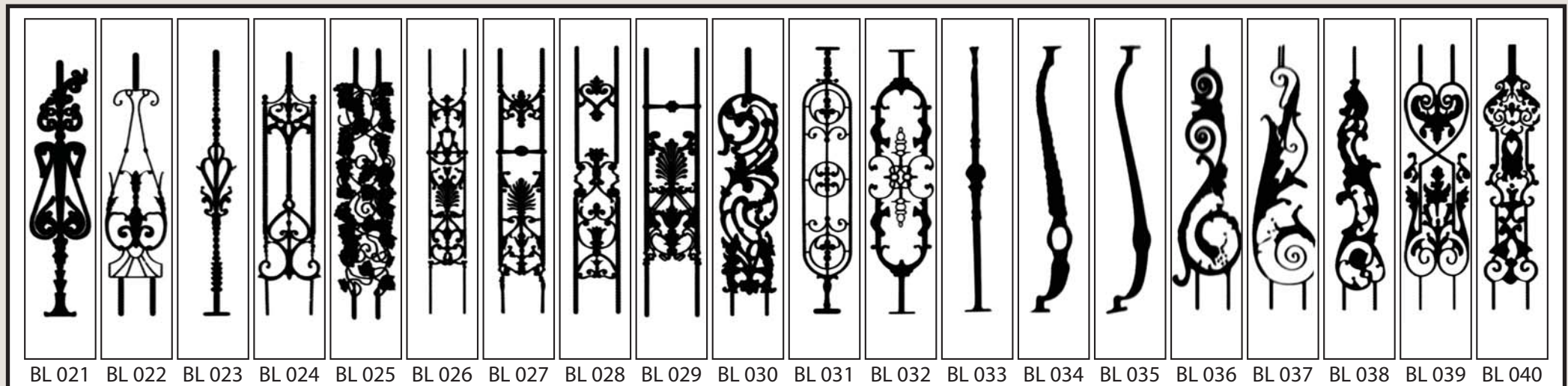
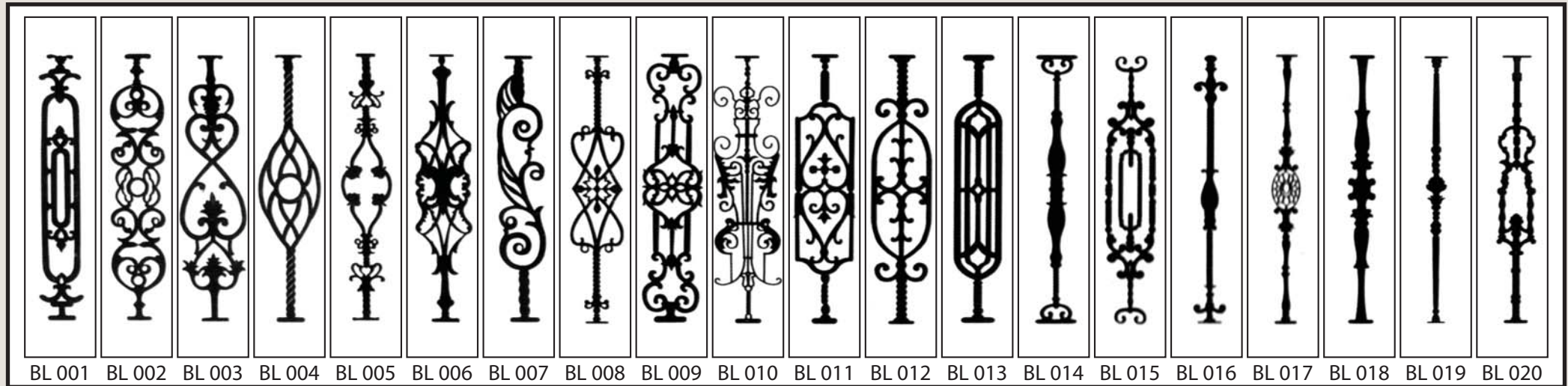


S 06



# Cast Aluminium Products

## Balusters









## الحقيقة للابواب الاتوماتيكية

**AL HAQIQAH AUTOMATIC DOORS**

Industrial Area No.14, Mowailah

P.O Box : 72032, Sharjah - U.A.E

Mobile : 971 50 368 6090 / 971 55 855 0446

Tel : 971 06 535 4492, Fax: 971 06 535 4493

Email : [alhaqiqahdoors@gmail.com](mailto:alhaqiqahdoors@gmail.com)

[ahaddoor@eim.ae](mailto:ahaddoor@eim.ae)



**AL HAQIQAH**

**AUTOMATIC DOORS**