



# GITECH

## LIFTS & ESCALATORS

We Promise High, We Deliver Higher



Lifts



Escalators



Moving Walks



Automated Parking



Cargo Lifts



Dumbwaiters



Accessibility



BMU

[www.gitechuae.com](http://www.gitechuae.com)





**GITECH**  
LIFTS & ESCALATORS



## CONTENTS

• About us .....	1 - 2
- Who we are .....	1
- What we do .....	1
- About our clients .....	2
• Ethics and values .....	3
• GITECH Important Milestones .....	4
• Products .....	5 - 6
• Why choose us .....	7
• Clients and Collaborations .....	8
• Brands .....	9 - 22
• Our Projects .....	24 - 34

# ABOUT US

## Who we are

GITECH Lifts & Escalators was established in 2009 by a team with more than 20 years of experience in the elevator business. We are based in Abu Dhabi but operate all over the UAE and the Middle East.

Since 2011, GITECH was an ISO 9001 and OHSAS 18001 certified company.

We also participated in Cityscape and World Eco Construct Exhibition at ADNEC, Abu Dhabi to promote new Eco-friendly products and latest developments.

## What we do

We specialize in supplying, installing, maintaining, and modernizing all types of vertical transportation systems such as elevators, escalators, dumbwaiters, and parking systems. We also offer our clients professional services in design and traffic analysis.

We offer highly customizable products and flexible solutions that are sure to add value to a project thus realizing the client's objectives.



## About our clients

The clients we served are as varied as engineers, consultants, fit-outs, contractors, interior designers, building and mall owners. We also offer villa owners our accessibility solutions.

As our client, we will be there for you every step of the way. We will collaborate with you from the design stage, equipment selection, implementation, and great after-sales services.



## CLIENTS OUR GREATEST ASSET



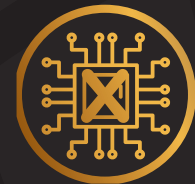
Our clients are our greatest assets, and we are dedicated to offering them high-quality products at competitive prices and excellent after-sale service.

## SHORT & LONG TERM BENEFITS



We care about our client's short-term and long-term financial returns.

## NON PROPRIETARY CONTROLLERS



We supply only non-proprietary controllers, you're the full one and not the elevator company.

## COLLABORATION WITH CLIENTS



We collaborate with our clients to assist them with design, traffic analysis, drawings, and technical support.

## GITECH IMPORTANT MILESTONES

- |                |  |
|----------------|--|
| <b>IN 2009</b> | Established in 2009 by a team with over 20 years experience.   |
| <b>IN 2016</b> | Installed the first Automated Parking system.  |
| <b>IN 2016</b> | Participated in NEXTGEN Parking & Traffic Management Summit - 2 to 3 March - Dubai   |
| <b>IN 2017</b> | Participated in Gulf Parking and Gulf Traffic Exhibitions - 4 to 6 Dec - Dubai WTC   |
| <b>IN 2018</b> | Sold 4 New Automated Parking (the most in UAE & Middle East)   |
| <b>IN 2019</b> | Launched their new range of Accessibility Solutions by ( <b>VIMEC</b> ) Italy.<br>Launched the First Pit-less Electric Driven Home Elevator ( <b>STILTZ</b> ). |
| <b>IN 2020</b> | Sold over than 700 units   |
| <b>IN 2021</b> | More than 1000 <sup>+</sup> Installations and counting...  |



## OUR PRODUCTS

### CUSTOMIZED ELEVATORS

Our customized solutions will tailor an elevator customization program that applies to your building's characteristic features.

We help you overcome the design challenges and existing modifications like the low pit, low overhead, and shaft dimensions requirements of your project.

### AUTOMATED PARKING SYSTEMS

A fully automated parking system is a perfect solution for urban planning parking. It makes for an efficient system.

Ideal solution for commercial, public, and residential use, especially for buildings with limited space, where sufficient parking positions are required.

### HOME LIFTS

Easy to integrate, residential elevators can be fit in compact spaces. Perfect for homes, they provide barrier-free living, convenience, and luxury.

It's ideal solution for eliminating the need for stairs and adding long term value. Combine different colors and materials, add accessories and lighting and create an attractive cabin that fits perfectly to your place.

### DUMBWAITERS

The transporting of goods and beverages between different levels was never easier and more comfortable.

Our dumbwaiters have robust and reliable design and offer a bespoke solution to the above mentioned requirements increasing productivity, decreasing strain and saving time.

### BUILDING MAINTENANCE UNIT BMU

We provide you with the widest range of configurable building maintenance units (BMU's) built on innovative, proven technologies which provide exceptional performance.

### ACCESSIBILITY SOLUTIONS

Our accessibility solutions offer easy access to stairs without depending on others. Compactly, these stairs can be installed beside stairs. It's suitable for indoor and outdoor use.

We offer solutions to assist people with mobility difficulties, designed to ensure their autonomy and independence

## OUR PRODUCTS

### PASSENGER ELEVATORS

An elevator solution for residential and commercial buildings to move people up and down a building vertically.

In addition to the beauty of cabin designs, high-quality robust structures, and components we offer a wide range of product lines with a capacity range from 200 to 5,000 kg and speed up to 30 m/sec.

### CARGO LIFTS

Developed for demanding areas of application and for the safe transportation of loads.

Cargo lifts moves goods in factories, warehouses, industrial plants, and institutions. They help easy moving of goods.

### ESCALATORS

Escalators are an easy and convenient way to travel from floor to floor. Your safety is our first priority, all our products underlie thorough tests in order to ensure a safe ride.

Our escalators bridge different areas since they are perfectly in line with the environment in high-rise shops, large shopping centers, airports, and rail stations.

### HOSPITAL LIFTS

Emergency situations, continuous traffic of patients, doctors, nurses, and visitors, transportation of bulky beds, wheelchairs and medical equipment are everyday challenges that demand reliable and robust solutions.

Our hospital lifts offer high safety, great functionality, excellent riding comfort and cost reduction by energy saving systems along with modern design.

### CAR LIFTS

A car elevator can be used to vertically transport vehicles between different floors. It is especially useful for car showrooms, hotels, etc.

### MOVING WALKS

Our Moving Walks solutions cater to airports, supermarkets, shopping centers, and metro stations since they are the ideal solution for the transportation of heavy luggage, shopping carts, and trolleys. While safety is the priority, we do not neglect to offer a smooth and comfortable ride to our passengers.

## WHY CHOOSE US?

### OUR CLIENTS ARE OUR GREATEST ASSETS

We are dedicated to offering you high-quality products at competitive prices and excellent after-sale services. We care about your short-term and long-term financial return.

### WE USE NON PROPRIETARY CONTROLLERS

We supply only non-proprietary controllers. No lock, passwords, or special tools needed to access the elevator controller, which gives full control to the owner and not to the elevator company.

### WE'RE YOUR COLLABORATOR AND PARTNER

We collaborate with our clients with all their requirements from the design stage, traffic analysis, drawings to technical support.

### WE ASSURE YOU THE HIGHEST QUALITY

We don't subcontract the installation and maintenance, we do it ourselves with our qualified people. This means better quality control from the first day of the installation until the maintenance.

### WE'RE FLEXIBLE

We can offer you a wide range of designs and solutions. We can also customize it according to your requirements. Maintenance can be done by us or any other company without the requirement for special tools.

### OUR HIGH QUALITY SUPPLIERS

We have multinational suppliers that are one of the leading manufacturers in their respective fields. They have vast local and international experience.



**GITECH**  
LIFTS & ESCALATORS

1000+ INSTALLATIONS  
AND COUNTING...

We Supply, Install, Maintain, & Modernize  
Elevators & Escalators, Automated  
Parking Systems, and BMU



Residential  
Commercial



Government



Hospitals



Malls



Schools



Villas

## CLIENTS AND COLLABORATIONS

### GOVERNMENT



### DEVELOPERS



### CONSULTANTS



### MAIN CONTRACTORS



## OUR BRANDS

### ELEVATORS & ESCALATORS

**DOPPLER**  
Elevating your World.

**Nidec**  
All for dreams

### PARKING SYSTEMS

**MPS**system

### BMU

**Atechbcn**

### ACCESSIBILITY SOLUTIONS

**vimec**

**Stiltz**  
The homelift company

**DOPPLER**  
Elevating your World.

**Nidec**  
All for dreams

**Stiltz**  
The homelift company

**vimec**

**MPS**system

**Atechbcn**

## ABOUT OUR BRANDS

**Doppler** based in Greece with a presence in 70 countries. It's a manufacturer of elevators and escalators with over 20,000 elevator installations worldwide.

**Nidec** is a Japan-based manufacturer that operates in 45 countries. It manufactures the high speed control and motors. We use in our elevators and escalators.

**Stiltz** based in the UK, is a manufacturer of domestic or home lifts that can be fitted anywhere. We use this in many of our home or villa accessibility solutions.

**Vimec** UK-based, designs, manufactures and installs customized accessibility solutions: home lifts, chairlifts and stairlifts, platform lifts and mobile stair climbers.

**MPSsystem** based in Korea, has more than 25 years of experience in automated parking system. It pioneered the pallet-less technology with more than 50 installations.

**Atechbcn** based in Spain, Atechbcn is a leading global manufacturer of building Maintenance Units (BMU), with presence in more than 40 countries, through a network of key partners and distributors, from North America to Australia and are one of the leading manufacturers in the market being awarded more than 800 projects worldwide.



- Established in 2000 in Polykastro Greece
- Presence in more than 60 countries
- Over 20,000 elevators worldwide
- Modern manufacturing facility
- Innovative solutions & flexibility in design
- Customized solutions for low pit, low overhead and special shafts
- 2017 awarded elevator of the year by elevator world
- wide product range from 100kg dumbwaiters to 20,000kg cargo



Panoramic Lifts



Passenger Lifts



Home Lifts



Hospital Lifts



Inclined Lift



Cargo Lifts



Dumbwaiters



Car Lifts



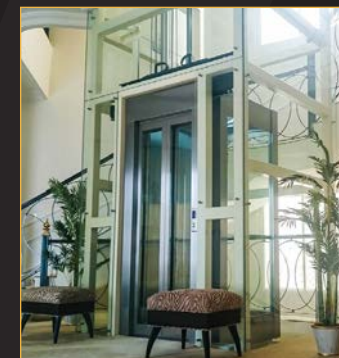
Moving Walks



Escalators



Panoramic Lifts



Passenger Lifts



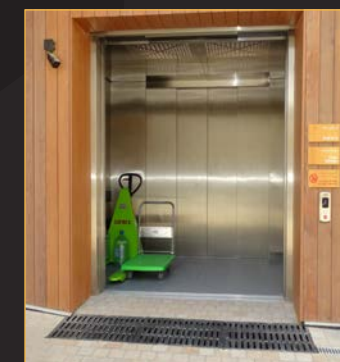
Home Lifts



Hospital Lifts



Inclined Lifts



Cargo Lifts



Dumbwaiters



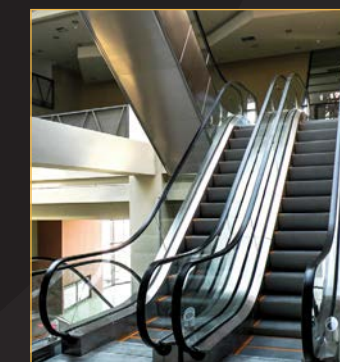
Car Lifts



Helipad Lifts



Moving Walks



Escalators



- Founded in July 1973
- Head office at Kyoto, Japan
- Employees Approx 120,000
- Operations in 45 countries through 240 companies
- Publicly Traded Tokyo SE since 1988
- Precision manufactured of motors and fans for IT/consumer electronics, office equipment, automotive, appliance, commercial and industrial applications. Also produces electronic/optical components and machinery.

## CORPORATION DEVELOPMENT

- 1908** the first elevator traction machine produced in Ohio, United States.
- 1973** Nidec Corporation founded.
- 1983** The first elevator control system produced in California, USA.
- 1988** Listed on Tokyo Stock Exchange.
- 2006** Nidec elevator Research center Founded.
- 2012** Kinetek was acquired by Nidec Corporation.
- 2016** Nidec Elevator Qingdao manufacturing base officially started production.

## CORE TECHNOLOGY FROM THE U.S.A

### ELEVATOR CONTROL AND MACHINE TECHNOLOGY UP TO 10M/S



High speed  
control  
system  
iControl.

Speed up to  
10m/s



High speed  
ACPM  
gearless  
machine.

Speed up to  
10m/s



Destination  
based  
dispatching  
system



Panoramic Lifts



Cargo Lifts



Passenger Lifts



Moving Walks



Hospital Lifts



Escalators

- More than just a lift, the Stiltz will enhance your life.
- Unique and innovative domestic lift that can be fitted almost anywhere
- The Duo is unlike any other. No hydraulics or need to be fixed to walls
- The Duo plugs straight to 13 amp power socket
- The lift is self supporting structure, using dual rail technology
- The lift can be installed in places where other home lifts will not fit
- The clever design allows a quick installation and lower cost
- 1 month delivery / 3 days installation / No pit / Minimal civil work / Can be installed in existing villa / Small foot print





Since 1982 Vimec designs, manufactures and installs customized solutions: home lifts and elevators, chairlifts and stairlifts, platform lifts and mobile stair climbers. More than 100.000 installations all over the world.

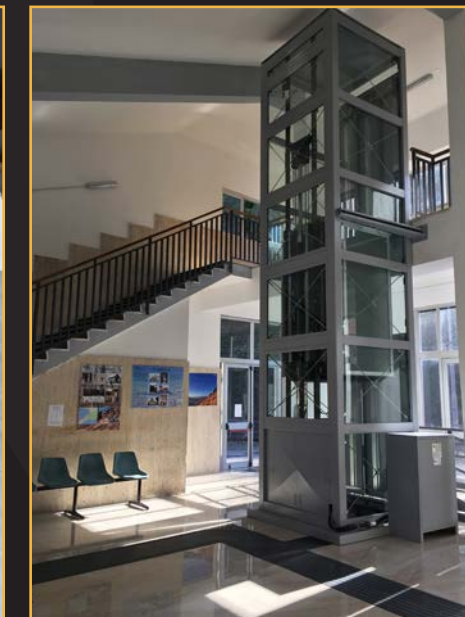
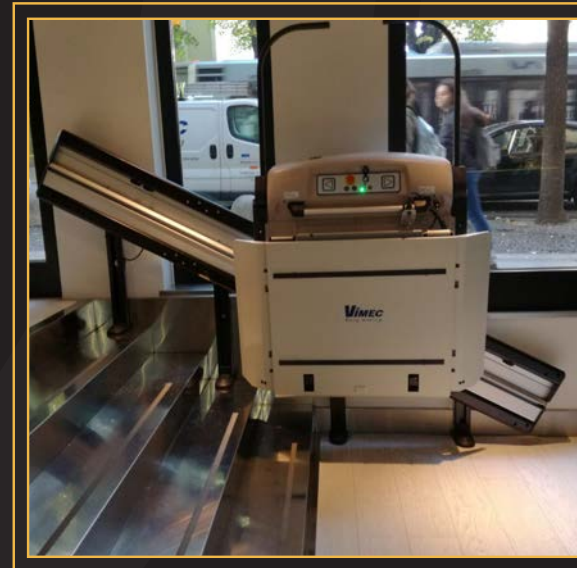
**VIMEC ACCESSIBILITY** is the brand line that takes care of the design, implementation and installation of tailor-made solutions to support people with mobility needs, both at home and in public premises.

**VIMEC HOMELIFT** is the brand line referred to people who aim to ensure home comfort with a dedicated lift, driven by italian design, technology and eco-sustainability.

#### THE VALUE OF VIMEC SOLUTIONS

All VIMEC products are fully compliant with the European Directives, and therefore bear the CE marking.

As an assurance of this, VIMEC has voluntarily had all of its products' compliance certified by Notified Bodies (TUV and IMQ). This commitment to quality is further evidenced by the fact that Vimec has become Italy's first company in its sector to obtain UNI EN ISO 9001 Quality System certification from DNV (Det Norske Veritas), which has subsequently been renewed in accordance with Vision 2000.





- Founded in July 1993 as a part of construction department in JINDO Corp
- More than 25 years Experience in Automated Parking
- Pioneers in the Pallet-Less Technology
- Over 50 Projects Worldwide
- Easier to Install & Maintain
- Advanced Technology with Smart Integration
- Smart Monitoring
- Cost effective

## THE Duo Robot

The most advanced compact and reliable "robotic" parking system in the world.

- The Duo lifts all four tires of the vehicle in a completely seamless and innovative technique.
- The Duo allows the lowest floor to floor height of any system in the world.
- The Duo allows for easy and simple installation process with concrete or steel structure.
- The Duo is the core of MP's technology and experience.
- The Duo is used with five types of delivery techniques, namely the **MetroTrolley**, **MetroTrans**, **MetroTower**, **MetroCL** and **MetroCylinder** techniques.



Duo Robot



Metro-Trolley



Metro-Trans



Metro-CL



LIFT



Metro-Cylinder



Smart-Kiosk

- Accumulated experience for over than 20 years
- A highly experienced executive, technical and commercial team
- Aleader in the sector of building maintenance units
- From calculations and design process to the industrialization, quality control and installation
- Present in more than 40 Countries
- A consolidated distribution network deeply established in each country
- Technology combines latest advances in performance, quality & cradle safety



#### A1 - Basic, light and versatile

Single jib machines with a slewing system for outreaches of up to 4m and a building height of less than 150m. Very light machines with excellent features for accessing regular façades.



#### A10 - A classic yet contemporary model

Standard equipment with great possibilities to include accessories such as devices for protecting cornices, auxiliary hoists, large platforms, etc.



#### A15 - All the benefits in minimum working space

High performance single jib cradles, with slewing jib and spreader bars, luffing and telescopic jibs, horizontal outreaches of up to 35m.



#### A25 - Industrial technology without limits

Single jib machine of large dimensions, with horizontal work scope at up to 50m and building height at up to 600m.



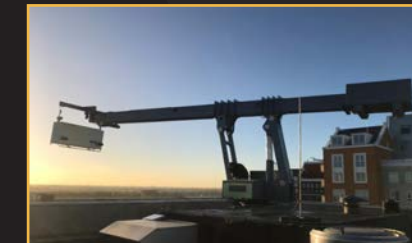
#### A18 - The highest expression of a customised solution

Multi-slewing mono-jib equipment of large dimensions, with horizontal working range up to 50m.



#### A40

Support system for motorised cradles which allows the movement, folding and turning of suspended equipment, so that it can be shared in buildings with roofs at different levels, or with interior spaces which need to be accessed.



#### Scissor / Luffing Type

A maximum efficacy on parking position with a low height availability.



#### A2

Motorised cradles designed for single monorail tracks fixed to cantilever support brackets that permit the maintenance of façades in buildings in which the design does not allow for the installation of roof mounted equipment due to a lack of space or load capacity.



#### A30

System for accessing fan lights, large skylights, or horizontal, vaulted or sloping glazed surface areas, from the interior as well as from the exterior. They are made in aluminium to be as light as possible. It is possible to suspend motorised cradles or special stairs from them.





## OUR PROJECTS

**CLIENT:** Reem Developer

**CONSULTANT:** UNii Engineering Consultancy

**CONTRACTOR:** Construction & Reconstruction Eng. Co. (CRC)  
4 Units Elevators | 1000–1200kg | Speed 4.0 m/s



**CLIENT:** 5 Star Hotel & Resort

**CONSULTANT:** Bainona Engineering Consultancy

**CONTRACTOR:** Fibrex Construction Group  
10 Units Elevators | 3–17 Stops | 1000–1200kg | Speed 4.0 m/s  
2 Dumbwaiters | 250kg



## OUR PROJECTS

**CLIENT:** Dubai Courts

**CONSULTANT:** Arab Experts Eng. Consultants (AREX)

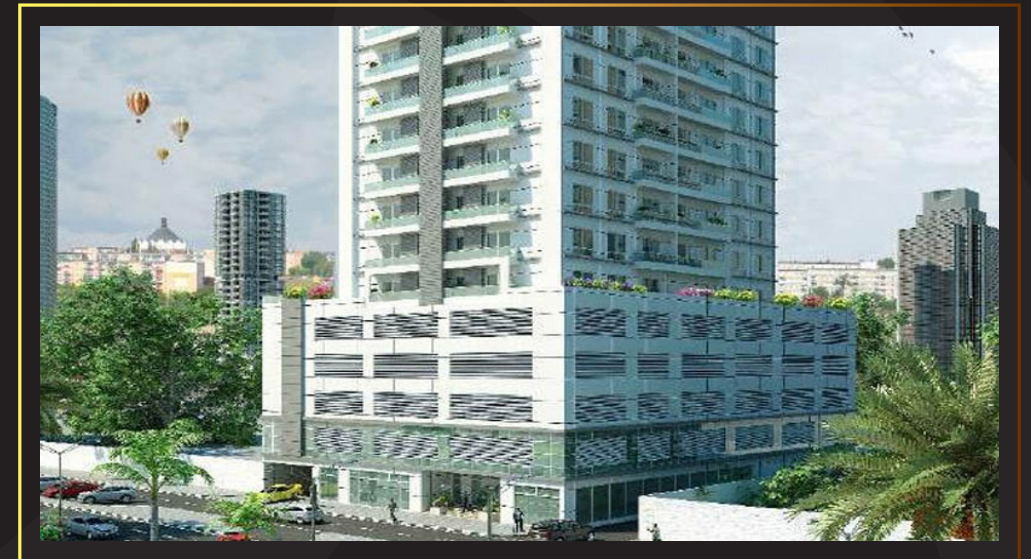
**CONTRACTOR:** China Railway Construction Corp. (CRCC)  
14 Units Elevators | 1000–1600kg | Speed 4.0 m/s



**CLIENT:** Dr. Hassan Odah

**CONSULTANT:** Al Khawaja Eng. Consultants

**CONTRACTOR:** Al Badr Contracting  
3 Units Elevators | 1100kg | Speed 2.5 m/s  
1 Unit Elevator | 1600kg | Speed 1.6 m/s





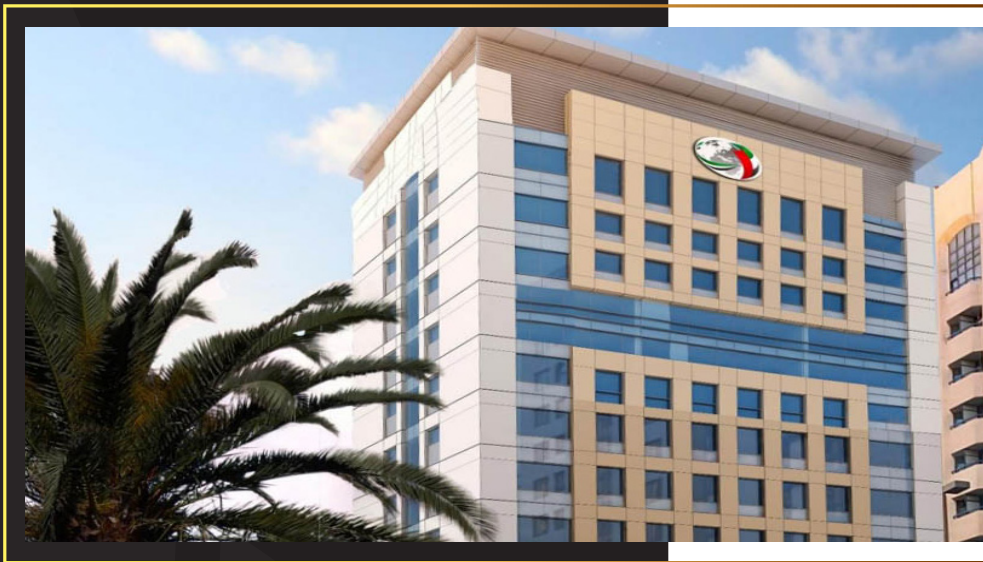
## OUR PROJECTS

**CLIENT:** Khalifa Foundation

**CONSULTANT:** Sahil Engineering Consultants

**CONTRACTOR:** Force 10 UAE

**Automated Parking:** 36 cars  
2 Units Elevators | 1200kg | Speed 2.0 m/s

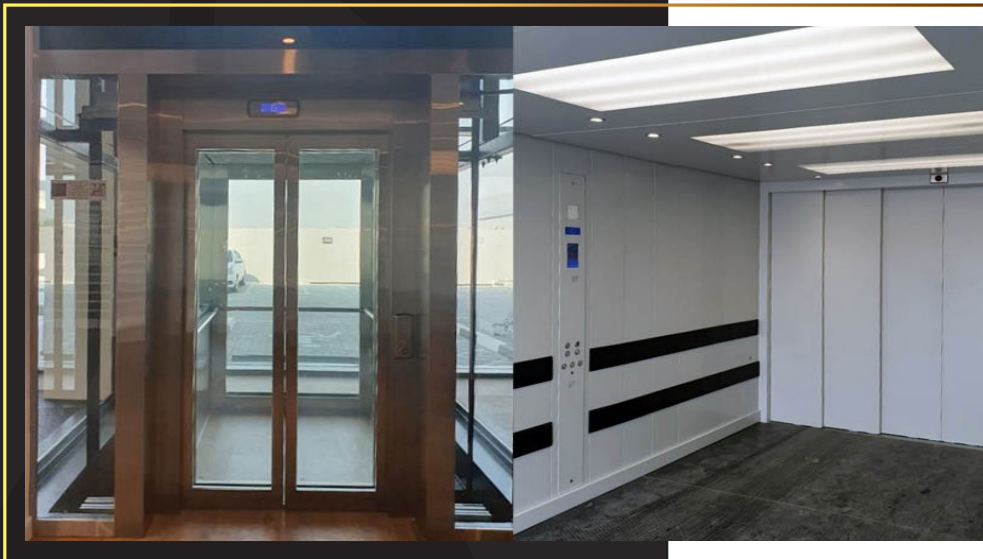


**CLIENT:** Gargash Enterprises

**PROJECT:** Mercedes Benz Workshop

**CONSULTANT:** Arkiplan Consulting Architects & Engineers

**CONTRACTOR:** GCC Contracting  
2 Units Traction | MRL Car Lift | 4 Stops | 5000kg | Speed 1.0 m/s



## OUR PROJECTS

**CLIENT:** Abu Dhabi Municipality

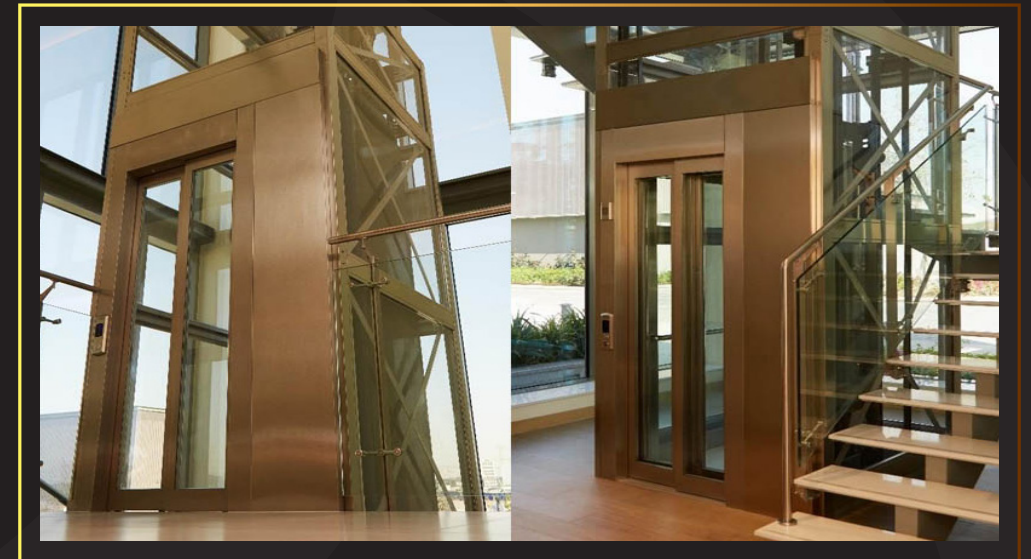
**CONSULTANT:** Weather Proof

**CONTRACTOR:** Al Jaber  
2 Units Elevators | 1600kg | Speed 1.0 m/s



**CLIENT:** Sobha Hartland

**CONSULTANT:** PNC Architects & Interiors  
1 Unit Low Pit Elevator | 600kg | Speed 1.0 m/s

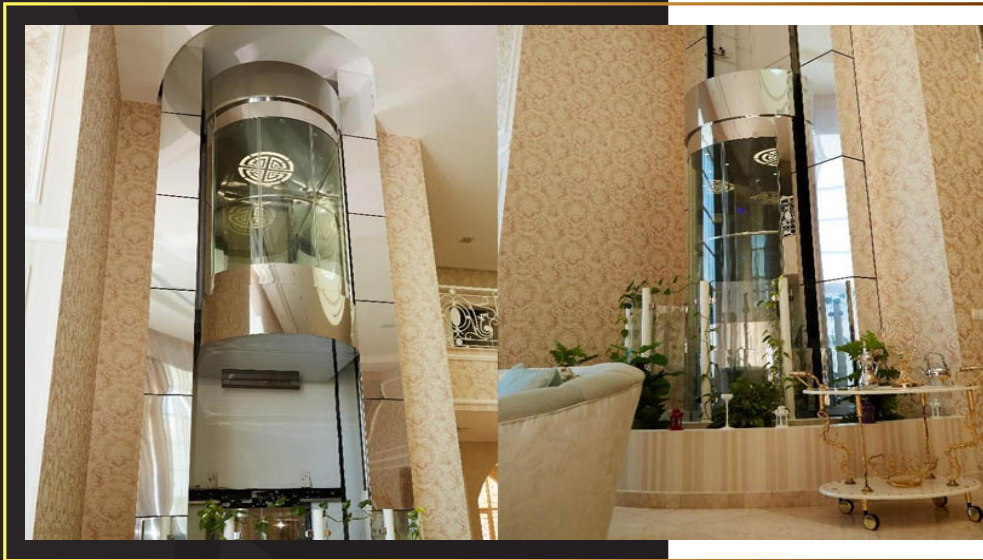




## OUR PROJECTS

**CLIENT:** Mr. Ahmad Sultan Al Jaber

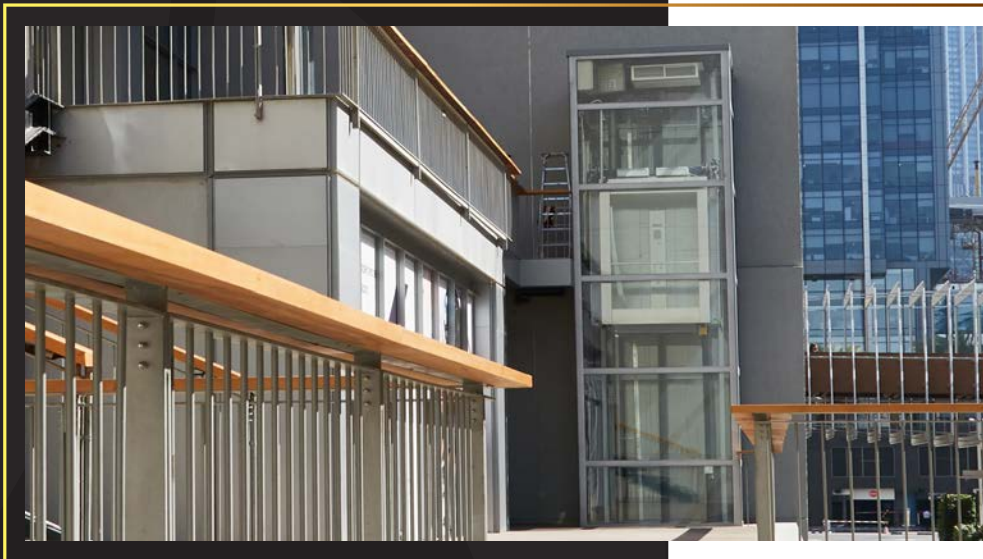
**CONSULTANT:** Hashim Contracting and General Maintenance  
1 Unit Elevator | 1000kg | Speed 0.5 m/s



**CLIENT:** DIFC

**CONSULTANT:** 10 Design

**CONTRACTOR:** Khansaheb  
1 Unit Low Pit Elevator | 600kg | Speed 1.0 m/s



## OUR PROJECTS

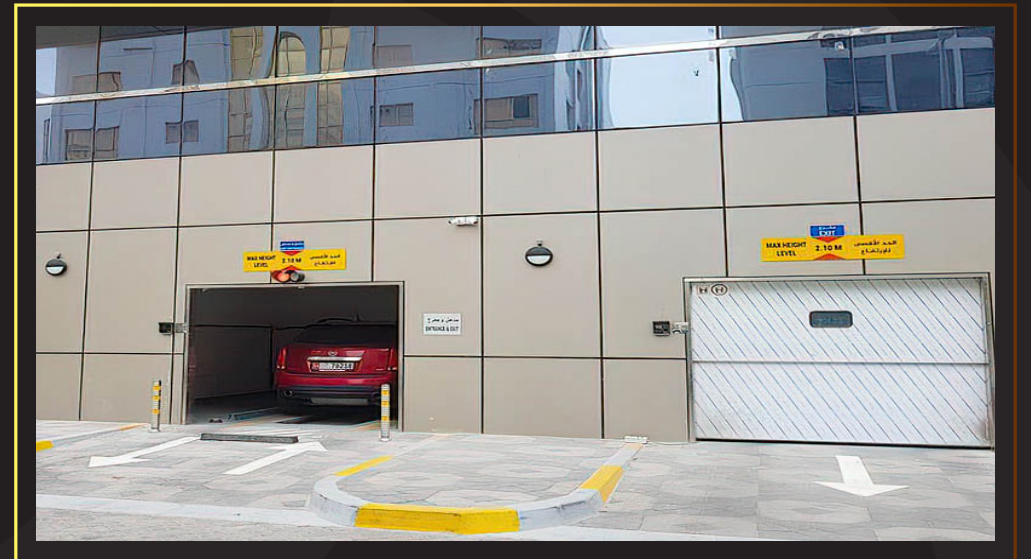
**CLIENT:** Mrs. Sheikha & Mariam Al Rumeithi

**PROJECT:** Residential & Commercial Building  
2 Units Elevators | 4 Stops  
82 Parking Space  
3/3 Trolley/Robots



**CLIENT:** Mr. Daen Ali Daen Al Mansouri

**PROJECT:** Residential & Commercial Building  
3 Units Elevators | 5 Stops  
188 Parking Space  
7/7 Trolley/Robots





## OUR PROJECTS

**CLIENT:** ALDAR Properties PJSC (AL RAHA LOFTS 503 & 504)

**CONSULTANT:** Pioneer Engineering Consultancy LLC

**CONTRACTOR:** A & M Int. General Contracting LLC  
8 Passenger Elevators | 800–1200kg | Speed 1.6 m/s  
2 Service Elevator | 1250kg | Speed 1.6 m/s



**CLIENT:** H. H. Sheikha / Latifa Bint Khalifa Al Nahyan

**CONSULTANT:** Target Engineering Consultants

**CONTRACTOR:** Uruk General Contracting & Maintenance Co.  
3 Units Elevators | 8 Stops | 630kg | Speed 1.75 m/s  
2 Car Lifts | 3500kg | 3 Stops | Speed 1 m/s



## OUR PROJECTS

**CLIENT:** Saadiyat Residential Building

**CONSULTANT:** Bainona Engineering Consultancy

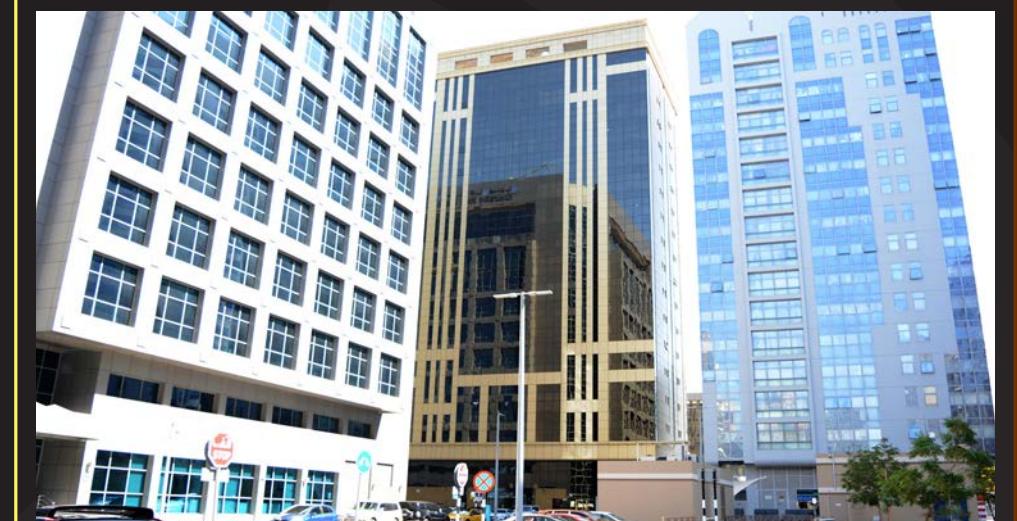
**CONTRACTOR:** AD Int. Cont. & General Maint. Co. (ADICC)  
8 Passenger Elevators | 1000kg | 8 Stops | Speed 2.0 m/s  
1 Service Elevator | 1425kg | 8 Stops | Speed 2.0 m/s



**CLIENT:** Ahmed Al Rumeithy Residential Building

**CONSULTANT:** City Plan

**CONTRACTOR:** Qumra Trans. & General Cont. Establ. co. (QTCE)  
2 Passenger Elevators | 800kg | 21 Stops | Speed 1.75 m/s  
1 Service Elevator | 1125Kg | 21 Stops | Speed 1.75 m/s





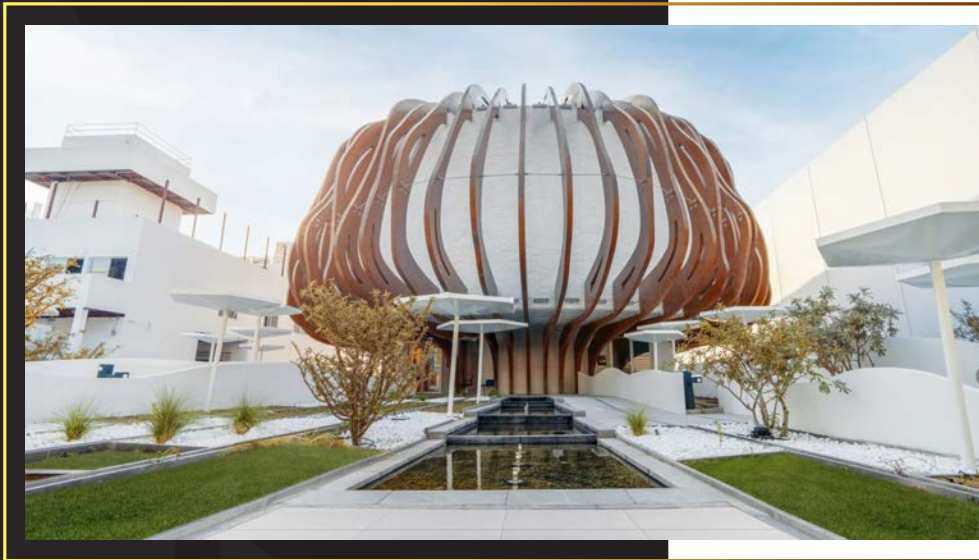
## OUR PROJECTS

**CLIENT:** EXPO 2020

**PROJECT:** Oman Pavilion

**CONSULTANT:** F&M Middle East

**CONTRACTOR:** Shapoorji Pallonji  
3 Passenger Elevators | 800kg & 1000kg | Speed 1.0 m/s  
1 VIP Elevator | 675kg | Speed 1.0 m/s



**CLIENT:** EXPO 2020

**PROJECT:** Venezuela Pavilion

**CONSULTANT:** Wanders Werner Falasi

**CONTRACTOR:** Zenith Smart Contracting  
1 Passenger Elevator | 1000kg | Speed 1.0 m/s



## OUR PROJECTS

**CLIENT:** EXPO 2020

**PROJECT:** Hungary Pavilion

**CONSULTANT:** X Architects

**CONTRACTOR:** Fam Contracting  
3 Passenger Elevators | 750kg & 1000kg |  
Speed 0.45 m/s & 1.0 m/s  
1 Dumbwaiter | 100kg | Speed 0.5 m/s



**CLIENT:** EXPO 2020

**PROJECT:** Poland Pavilion

**CONSULTANT:** X Architects

**CONTRACTOR:** RAQ Contracting  
2 Passenger Elevators | 1000kg & 3600kg | Speed 1.0 m/s





## OUR PROJECTS

**CLIENT:** EXPO 2020

**PROJECT:** Bahrain Pavilion

**CONSULTANT:** Wanders Werner Falasi

**CONTRACTOR:** Cimolai Rimond  
1 Passenger Elevator | 450kg | Speed 0.6 m/s



**CLIENT:** EXPO 2020

**PROJECT:** Palestine Pavilion

**CONSULTANT:** Wanders Werner Falasi

**CONTRACTOR:** ASGC  
1 Service Elevator | 3000kg | Speed 1.0 m/s



## OUR PROJECTS

**CLIENT:** EXPO 2020

**PROJECT:** Spain Pavilion

**CONSULTANT:** Wanders Werner Falasi

**CONTRACTOR:** Cimolai Rimond  
2 Passenger Elevators | 750kg & 1600kg | Speed 1.0 m/s  
3 Hydraulics Goods Lifts | 300kg & 500kg | Speed 0.15 m/s  
2 Dumbwaiter | 50kg | Speed 0.5 m/s



**CLIENT:** EXPO 2020

**PROJECT:** Czech Pavilion

**CONSULTANT:** STH Society Technology House  
Bridge Engineering Consultants

**CONTRACTOR:** Lamirada Contracting  
1 Passenger Elevator | 750kg | Speed 1.0 m/s





# ADVANTAGES

Short Term Advantages		
1	Wide Product Range by One Supplier	One Company can support with Design for Elevators, Parking systems and BMU Elevators range from 100kg-20,000kg, Speed from 0.15 m/s to 10.0 m/s
2	Customized Solutions	Overcome Design Challenges and Existing Project Modifications ( low Pit, low Overhead, Shaft Dimensions )
3	Multinational Suppliers	High quality Suppliers with International & Local Experience
4	Competitive Prices	High quality Products with Competitive Price
5	Fast Delivery	Suitable for fast track projects
6	Customized Designs	Wide range of standard design in addition customizable designs
7	Free design App	You can use GITECH app to get instant design assistance
8	Customer Oriented	We support our clients ( individuals and businesses ) with all their requirements from design stage
Long Term Advantages		
1	Non Proprietary Controller	No Lock, Passwords or special tools are needed to access the elevator controller, which gives full control to owner not to the elevator company
2	Easy To Maintain	Maintenance can be done by our company or any other company without the requirement to special tools
3	Cost Effective Maintenance	Explained in details in the next table

THANK YOU



**GITECH**  
LIFTS & ESCALATORS



Office #703 EMI Tower, Airport Road,  
P.O. Box 30513, Abu Dhabi, UAE

T: +971 2 622 9771  
E: info@gi-tech.co



SCAN ME

**DOPPLER**  
Elevating your World.

**Stiltz**<sup>TM</sup>  
The **homelift** company

**Nidec**  
—All for dreams

**vimec**

**MPS**system

**A**techbcn