



Vertical Anchorage Line System on Rigid Cable Line

Ref. VERTEX PN 7000

EN 353-1:2012

FALL PROTECTION FOR

- ▶ Industrial Ladders
- ▶ Chimney Ladders
- ▶ Telecommunication Towers
- ▶ Power Transmission Towers
- ▶ Windmill

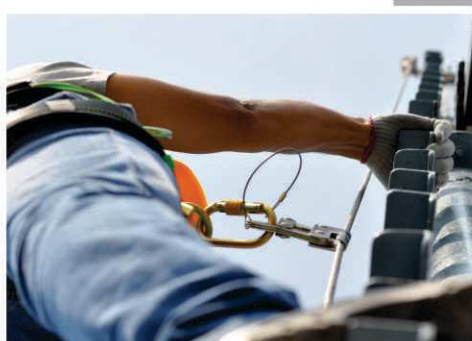
FEATURE & BENEFITS

- ▶ MOC: Stainless Steel Grade 316
- ▶ Shock absorber reduces impact of fall on victim as well as receiving structure.
- ▶ suitable for 1 person
- ▶ intermediates to reduce vibrations due to wind pressure at every 10 mtrs
- ▶ Trained Installers and Engineers to install the system.

Recommended PPE

- ▶ Full Body Harness
Ref. PN 56
- ▶ Forked Lanyard
Ref. PN 351
- ▶ Work Positioning
PN 242

Click on <http://karam.in/videos/> to know more,
or scan the QR code alongside





Ref. VERTEX PN 7000

Shock Absorber Ref. PN 7000 (02)

- ▶ Material : Stainless Steel 316.
- ▶ Limits the impact of force in the event of fall to less than 6kN.
- ▶ Quantity : 1 nos.



Mounting Bracket Ref. PN 7000 (01)

- ▶ Material : Stainless Steel 316.
- ▶ Breaking Strength > 23kN.
- ▶ Complies with EN 795 Class A1.
- ▶ Quantity : 2 nos.



Rope Grab Ref. RG-02 112

- ▶ Material : Stainless Steel 316.
- ▶ Works on stainless steel wire rope.
- ▶ Quantity : 1 nos.



Wire Rope (with one end having a swaged loops) Ref. PN 9XXXSL (Where XXX is the length of the wire rope in meters)

- ▶ Material : Stainless Steel 316.
- ▶ Diameter : 8mm.
- ▶ Construction : 7x19.



7 STRANDS OF
19 WIRES

Wire Rope Cap Ref. PN 7000 (12)

- ▶ Material : Aluminium Alloy.
- ▶ Quantity : 2 nos.



Intermediate Ref. PN 2001 (04)

- ▶ Material : Stainless Steel 316.
- ▶ Recommended Installation-Every 10m.



Set of U-bolts and Thimbles Ref. PN 6000 (01)

- ▶ U-Bolts : Qty-2 nos.
- ▶ Material : Stainless Steel 316.
- ▶ Thimbles : Qty-1 nos.
- ▶ Material : Galvanized Steel.
- ▶ Quantity : 1 set.



Tensioner Ref. PN 7000 (05)

- ▶ Regulates tensioning of the cable.
- ▶ Material : Stainless Steel 316.
- ▶ Quantity : 1 nos.





Vertical Anchorage Line System on Rigid Aluminium Rail System

Ref. VERTEX PN 8000

EN 353-1:2012

FALL PROTECTION FOR

- ▶ Out door Ladders
- ▶ Chimneys
- ▶ Wind Energy
- ▶ Transmission Lines
- ▶ Advertizement Bill Boards

FEATURE & BENEFITS

- ▶ Continuous ladder with Fall Protection
- ▶ Can negotiate bends
- ▶ Corrosion free anodized aluminum rail
- ▶ Hot dipped galvanized rugs
- ▶ Four wheel trolley slides on the rail and locks in an event of a fall
- ▶ Assists in climbing. The unique design of trolley supports the user while ascent or descent
- ▶ Locking jibs at either end for unintentional release of trolley from the rail while in use
- ▶ Alu. Rail extension to safely remove the trolley after reaching the landing platform.

Recommended PPE

- ▶ Full Body Harness
Ref. PN 56
- ▶ Forked Lanyard
Ref. PN 351
- ▶ Work Positioning
PN 242

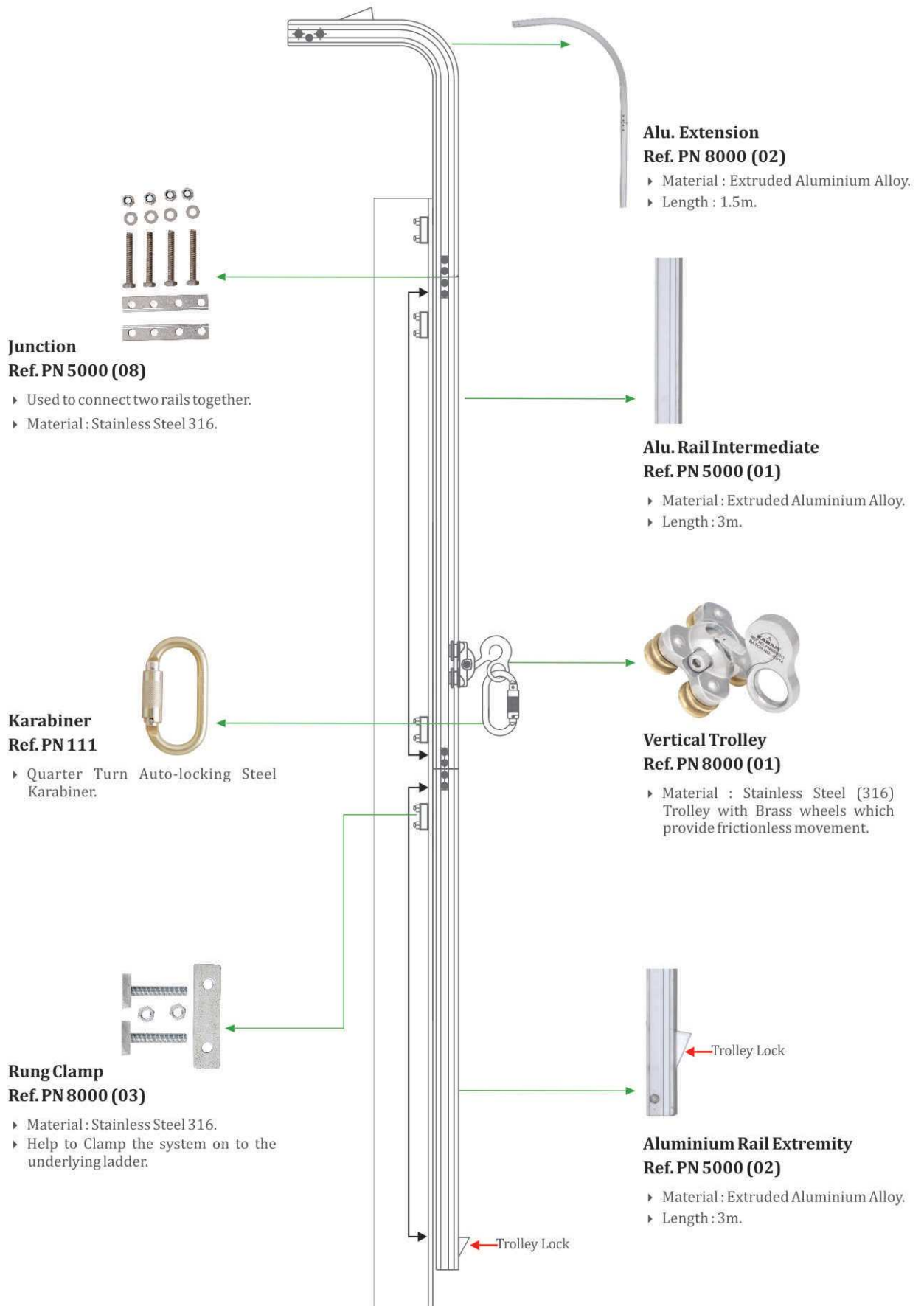


CE





Ref. VERTEX PN 8000





Vertical Anchorage Line System on Rigid Aluminium Rail System

Ref. VERTEX PN 9000

EN 353-1:2012

FALL PROTECTION FOR

- ▶ Out door Ladders
- ▶ Chimneys
- ▶ Wind Energy
- ▶ Transmission Lines
- ▶ Advertizement Bill Boards

FEATURE & BENEFITS

- ▶ Continuous ladder with Fall Protection
- ▶ Can negotiate bends
- ▶ Corrosion free anodized aluminum rail
- ▶ Hot dipped galvanized rugs
- ▶ Four wheel trolley slides on the rail and locks in an event of a fall
- ▶ Assists in climbing. The unique design of trolley supports the user while ascent or descent
- ▶ Locking jibs at either end for unintentional release of trolley from the rail while in use
- ▶ Alu. Rail extension to safely remove the trolley after reaching the landing platform.

Recommended PPE

- ▶ Full Body Harness
Ref. PN 56
- ▶ Forked Lanyard
Ref. PN 351
- ▶ Work Positioning
PN 242

Click on <http://karam.in/videos/> to know more,
or scan the QR code alongside





Ref. VERTEX PN 9000

Junction Ref. PN 5000 (08)

- Used to connect two rails together.
- Material : Stainless Steel 316.



Karabiner Ref. PN 111

- Quarter Turn Auto-locking Steel Karabiner.



Ceiling Mounting Bracket Ref. PN 5000 (06)

- Material : Stainless Steel 316
- Help to mount the ladder on to the underlying structure.



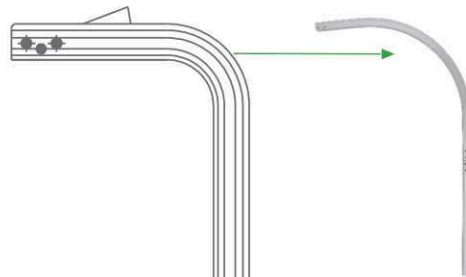
Mounting Nut Ref. PN 5000 (03)

- Material : Stainless Steel 316 to connect the rail to the mounting Bracket.



Alu. Extension Ref. PN 8000 (02)

- Material : Extruded Aluminium Alloy.
- Length : 1.5m.



Alu. Rail Intermediate Ref. PN 9000 (03)

- Material : Extruded Aluminium Alloy.
- Length : 3m.



Vertical Trolley Ref. PN 8000 (01)

- Material : Stainless Steel (316)
- Trolley with Brass wheels which provide frictionless movement.



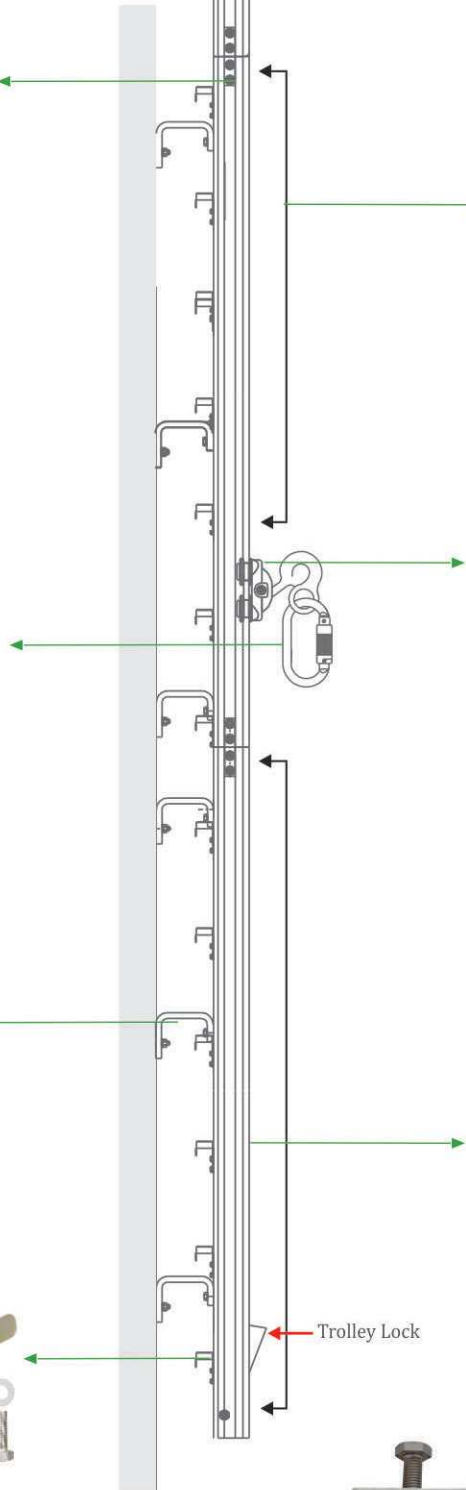
Aluminium Rail Ref. PN 9000 (02)

- Material : Extruded Aluminium Alloy.
- Length : 3m.

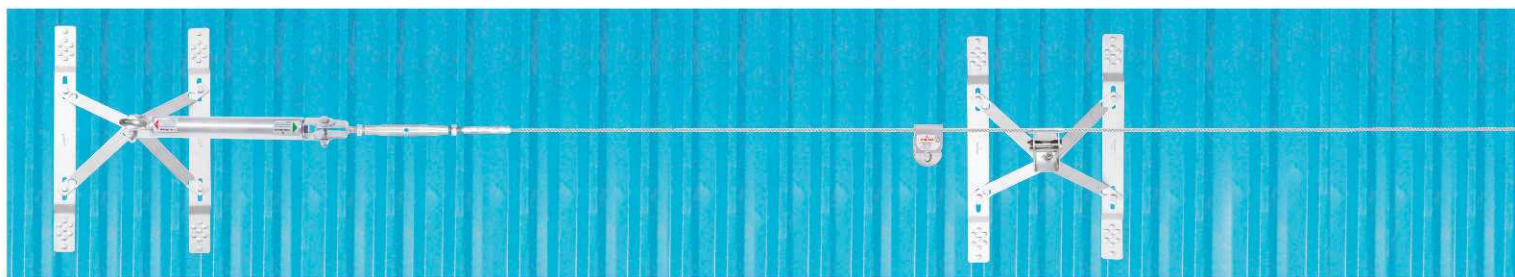


Mounting Nut Ref. PN 5000 (03)

- Material : Stainless Steel 316 to connect the rail to the mounting Bracket.



Trolley Lock



Horizontal Anchorage Line System on Rigid Cable Line

Ref. HORIZON PN 4000 (Over the Roof)

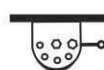


EN 795 TYPE C

FALL PROTECTION FOR

- ▶ Pre-engineered Building Roofs
- ▶ Fragile Roofs
- ▶ Air ports

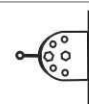
Intermediate Brackets Orientation for different Installations



Ceiling Mounting



Floor Mounting



Wall Mounting

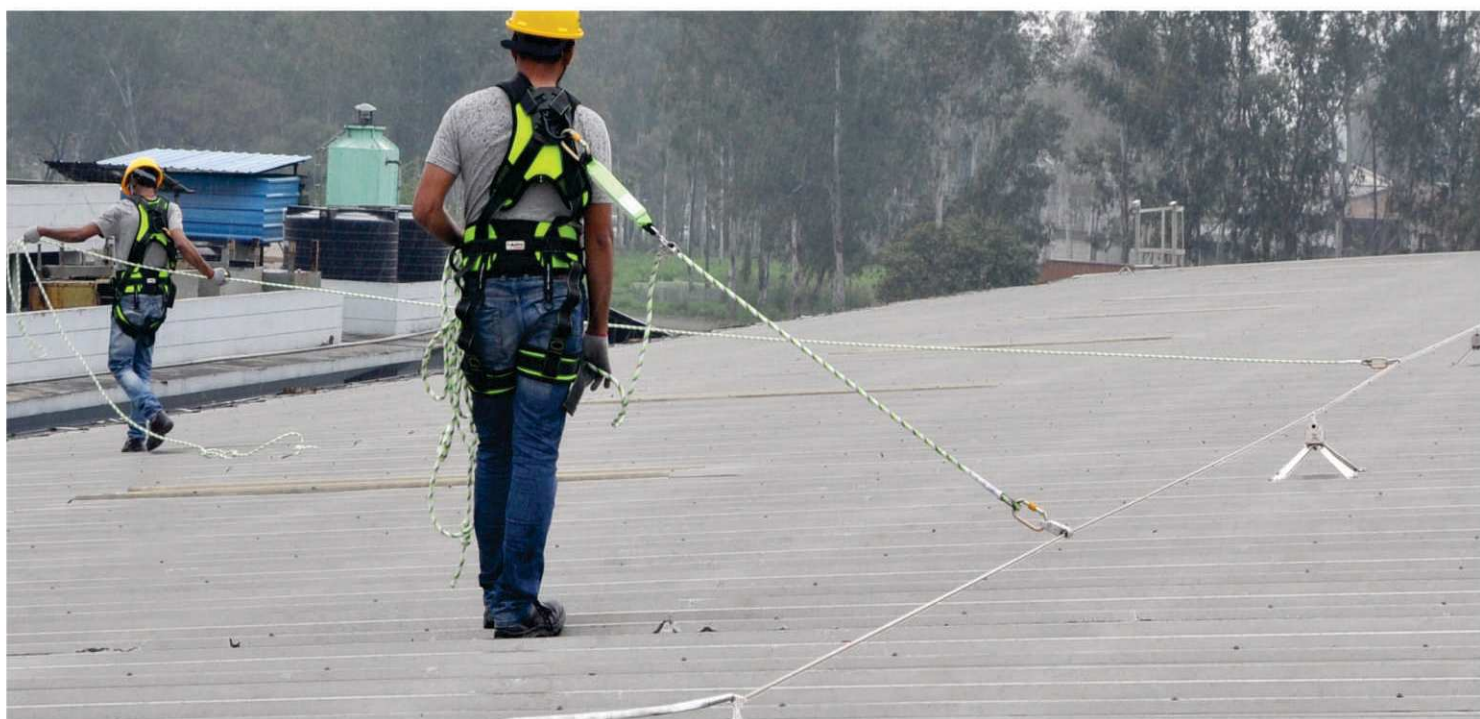
FEATURE & BENEFITS

- ▶ MOC : Stainless Steel Grade 316
- ▶ Maximum Number of users : 4
- ▶ System length : As per requirement
- ▶ Number of PPE Recommended : As per requirement
- ▶ Carriage body passes through intermediates without disconnection
- ▶ Shock absorber reduces impact of fall on victim as well as receiving structure.
- ▶ The Shock Absorber features a tension indicator and a fall indicator.
- ▶ Special waterproof posts fitted to roofsheets by blind rivets.
- ▶ Trained Installers and Engineers to install the system.

Recommended PPE

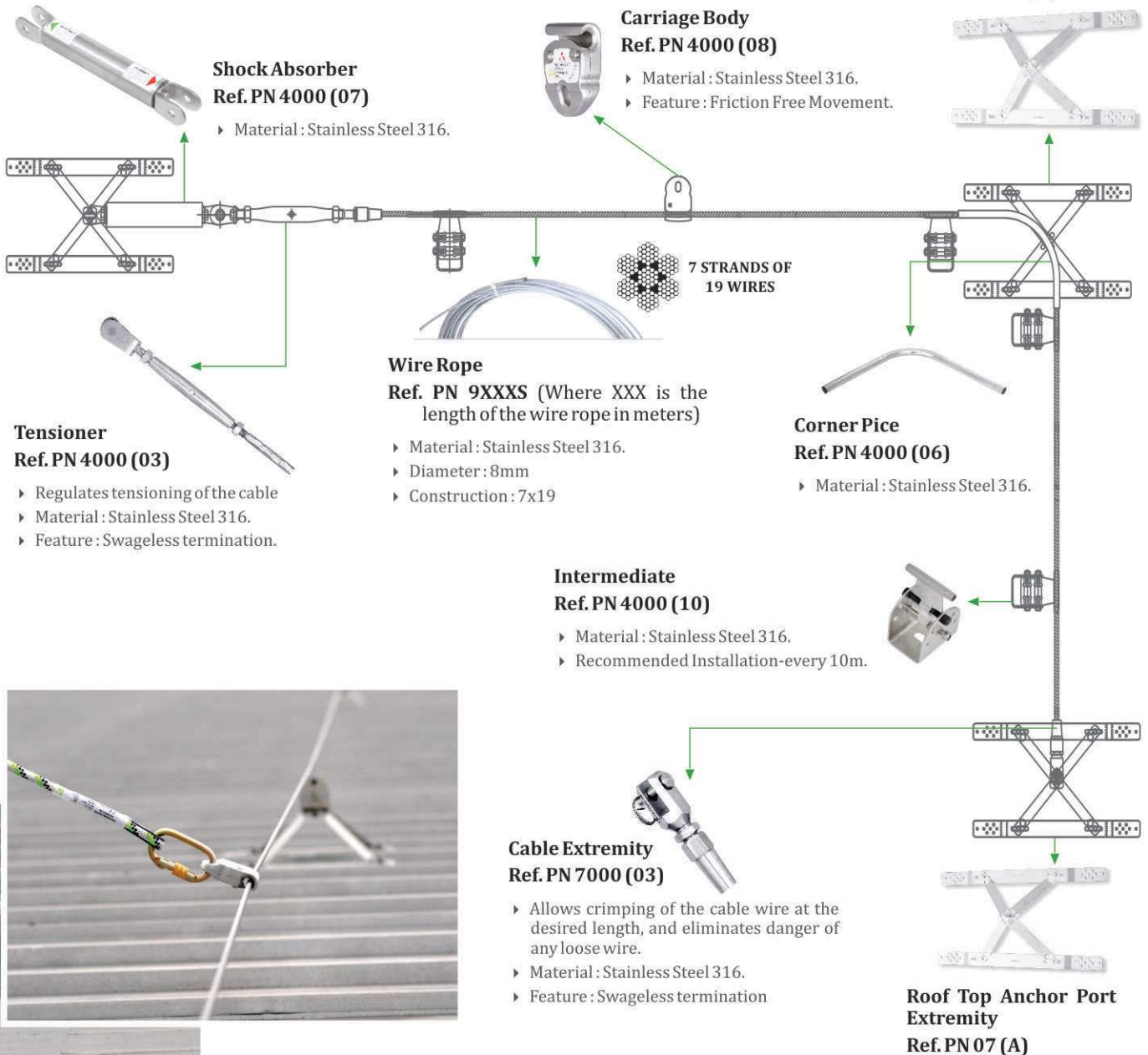
- ▶ Full Body Harness
Ref. PN 56
- ▶ Guided Type Fall Arrester on Flexible Anchorage Line
Ref. PN 2003

Click on <http://karam.in/videos/> to know more, or scan the QR code alongside



Ref. HORIZON PN 4000 (Over the Roof)

Roof Top Anchor Port
Intermediate
Ref. PN 07 (B)



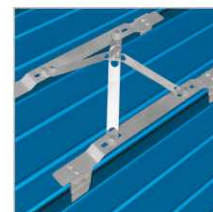
For Galvolume Sheet



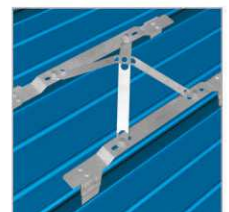
Roof Top Anchor Post
Extremity
Ref. SA 07 A



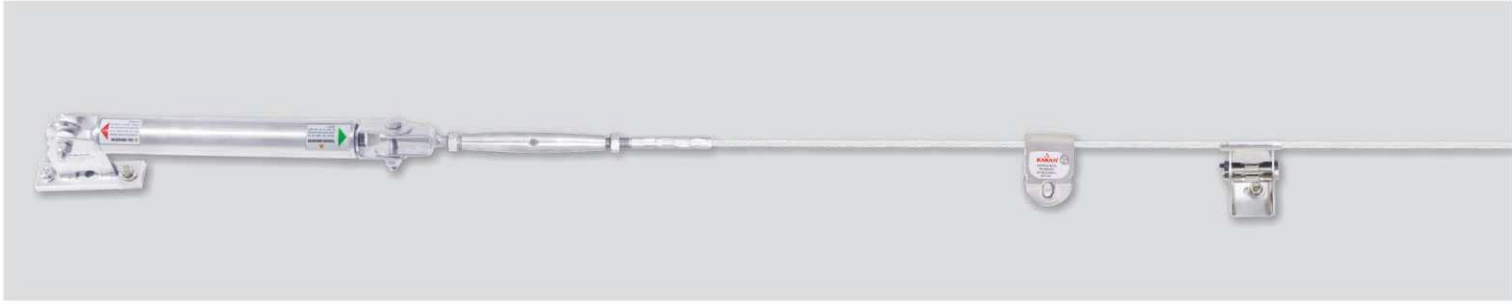
Roof Top Anchor Post
Intermediate
Ref. SA 07 B



Roof Top Anchor Post
Extremity
Ref. SA 07 C



Roof Top Anchor Post
Intermediate
Ref. SA 07 D



Horizontal Anchorage Line System on Rigid Cable Line

Ref. HORIZON PN 4000 (Over the Head)



EN 795 TYPE C

FALL PROTECTION FOR

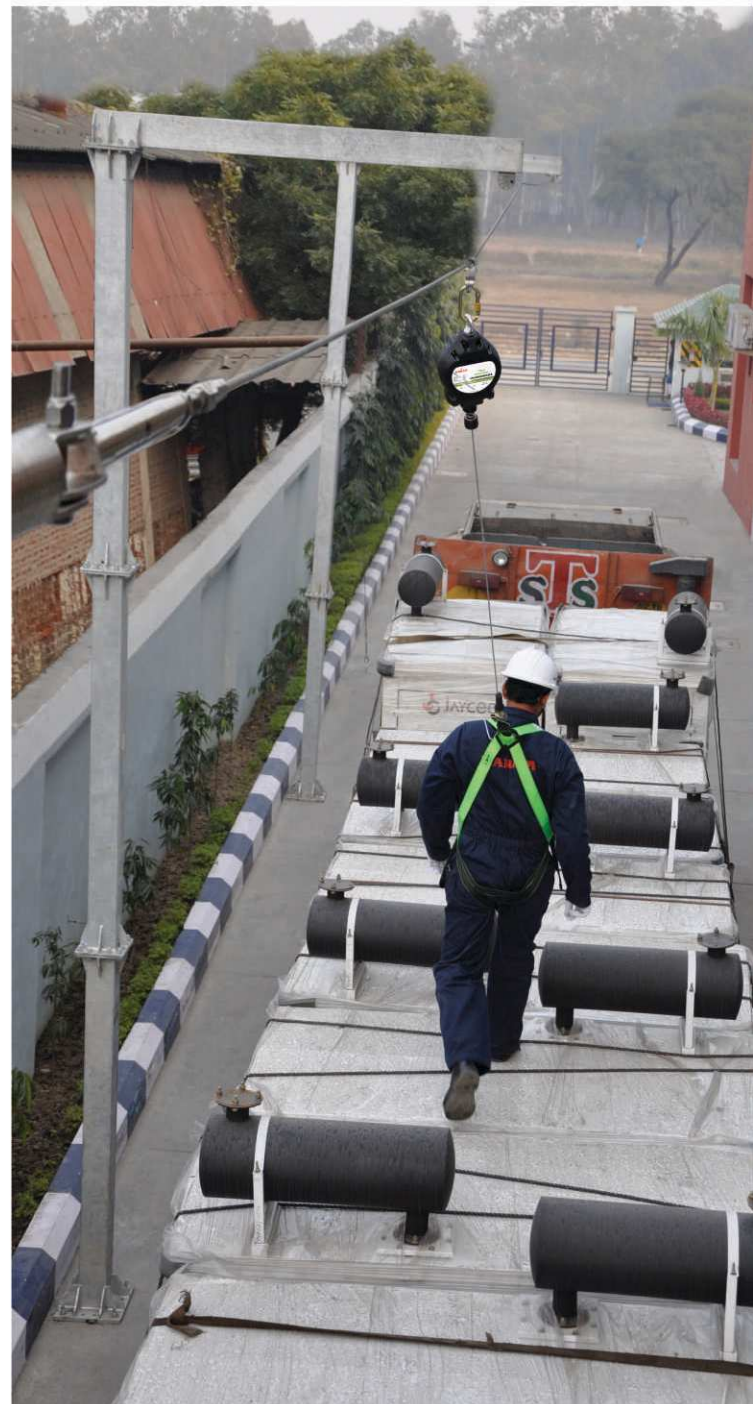
- ▶ Truck Loading / unloading
- ▶ Advertisement Bill Boards
- ▶ Industrial Cranes
- ▶ Oversized machines, Reactors, Turbines etc.

FEATURE & BENEFITS

- ▶ Made of Stainless Steel Grade 316
- ▶ Single Span System.
- ▶ System length : 10 meters.
- ▶ Number of PPE Recommended : 1 set.
- ▶ Equipped with a Shock absorber which reduces impact of fall on victim as well as receiving structure.
- ▶ ATEX approved systems for use in potentially explosive areas.
- ▶ Trained Installers and Engineers to install the system.

Recommended PPE

- ▶ No Spark Antistatic Full Body Harness
Ref. PN 22 (AS)
- ▶ Retractable Fall Arrester
Ref. PCGS 05



Ref. HORIZON PN 4000 (Over the Head)

II 2 G c T6

Universal Extremity Plate Ref. PN 4000 (09)

- ▶ Material : Stainless Steel 316

Carriage Body Ref. PN 4000 (08)

- ▶ Material : Stainless Steel 316.
- ▶ Feature : Friction Free Movement.

Wire Rope

Ref. PN 9XXXS (Where XXX is the length of the wire rope in meters)

- ▶ Material : Stainless Steel 316.
- ▶ Diameter : 8mm
- ▶ Construction : 7x19

Shock Absorber Ref. PN 4000 (07)

- ▶ Material : Stainless Steel 316.

Cable Extremity Ref. PN 7000 (03)

- ▶ Allows crimping of the cable wire at the desired length, and eliminates danger of any loose wire.
- ▶ Material : Stainless Steel 316.
- ▶ Feature : Swageless termination

Intermediate Ref. PN 4000 (10)

- ▶ Material : Stainless Steel 316.
- ▶ Recommended Installation-every 10m.

Tensioner Ref. PN 4000 (03)

- ▶ Regulates tensioning of the cable
- ▶ Material : Stainless Steel 316.
- ▶ Feature : Swageless termination.





Horizontal Anchorage Line System on Rigid Aluminium Rail



Ref. HORIZON PN 5000

EN 795 TYPE D

FALL PROTECTION FOR

- ▶ Parapets
- ▶ Window Cleaning
- ▶ Wind mills and Nacelle
- ▶ Domes
- ▶ Machines top with unguarded edges

FEATURE & BENEFITS

- ▶ Continuous movement with complete fall protection
- ▶ Corrosion free anodized Aluminum rail.
- ▶ Four wheel trolley slides on the rail provides restrain against fall.
- ▶ Locking jibs at either end for unintentional removal of trolley while in use.
- ▶ Curved aluminum rail for easy movement.

Recommended PPE

- ▶ Full Body Harness
Ref. PN 56
- ▶ Restraint Lanyard
Ref. PN 2003

Installations Using Different Types of Mounting Brackets



Wall Mounted Installation
(with Recess)



Wall Mounted Installation
(Flush Type)



Floor Mounted Installation



Ceiling Mounted Installation





Ref. HORIZON PN 5000

Junction Ref. PN 5000 (08)

- Used to connect two rails together
- Material : Stainless Steel 316



Wall Mounting Bracket with Recess Ref. PN 5000 (05)

- Material : Stainless Steel 316 (for wall mounting with Recess).



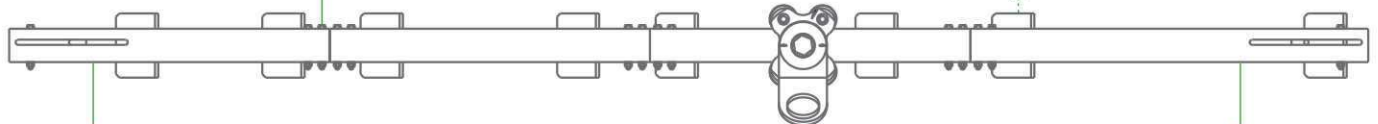
Wall Mounting Bracket Flush type Ref. PN 5000 (04)

- Material : Stainless Steel 316 (for Flush type wall mounting).



Ceiling Mounting Bracket Ref. PN 5000 (06)

- Material : Stainless Steel 316 (for Ceiling mounting).



Alu. Rail Extermity Ref. PN 5000 (02)

- Material : Extruded Aluminium Alloy.
- Length: 3 Meter.



Trolley for Wall Ref. PN 5000 (12)

- Material : Stainless Steel 316 Trolley with Brass wheels which provide frictionless movement.



Trolley for Ceiling/floor Ref. PN 5000 (13)

- Material : Stainless Steel 316 Trolley with Brass wheels which provide frictionless movement.



Alu. Rail Intermediate Ref. PN 5000 (01)

- Material : Extruded Aluminium Alloy.
- Length: 3 Meter.



Mounting Nut Ref. PN 5000 (03)

- Material : Stainless Steel 316 to connect the rail to the mounting Bracket.



Curved Alu. Rail (outer wall mounted) Ref. PN 5000 (09A)

- Material : Extruded Aluminium Alloy.



Curved Alu. Rail (inner wall mounted) Ref. PN 5000 (09B)

- Material : Extruded Aluminium Alloy.



Curved Alu. Rail (Ceiling/Floor) Ref. PN 5000 (10)

- Material : Extruded Aluminium Alloy.

