



**CreativeShelf** LLC

Turnkey Projects | Interior Designing | Hotel Solutions

Interior that reflects your style



## TABLE OF INDEX

About us	05
Our Approach	07
Our Services	09
Our Infrastructure	10
Organization chart	12
Key sectors	13
Banks & Exchange	14
Villas & Apparments	17
Schools	26
Kiosks and Exhibition	29
Retail	36
Corporate	42
F&B (Hospitality)	52
Health Care	62
Leisure	68
Government projects	71





WE DON'T  
RENOVATE  
SPACES, WE  
TRANSFORM  
THEM.

## ABOUT US



**Huzefa Habil**

Creative shelf LLC is a specialist interior design and fit-out company established in Dubai, incepted in year 2007. Creative Shelf was the initiative of late Mr. Habil Husain, who decided to utilize his experience and expertise with his partner Huzefa Altaf to develop smart interactive spaces for client's Residential apartments, Villas, Offices, Retail outlets, exhibition stands and hospitality



**Huzefa Altaf**

Creative shelf LLC is a specialist interior CS offers comprehensive and complete design services beginning with an initial design concept through installation and detailing of final design elements to complete the project through our own in house skilled workers. Our unique approach and methodologies deliver the right mix of brand, message and experience with a noticeable return on the investment. CS has successfully completed multiple high-quality projects all over Dubai, UAE, KSA and Africa over the last 13 years.

We look at how people explore, learn, play and discover within a space. Working with a team of specialists and using the latest 3D software, Creative Shelf focuses on creating spatial experiences that are in line with your brands requirements – from creating awareness and differentiation, to supporting marketing initiatives that strengthen your presence, to generating sales.





//  
**DETAILS  
ARE NOT  
DETAILS.  
THEY MAKE  
THE  
DESIGN.**  
//

## OUR APPROACH







**YOUR HOME SHOULD TELL  
THE STORY OF WHO YOU  
ARE, AND BE A COLLECTION  
OF WHAT YOU LOVE**

- Nate Berkus  
Interior designer

## OUR SERVICES

**INTERIOR DESIGN CONSULTANCY** Our team of interior designers work with/for you, to conceive the ideas and then translate them into beautiful and feasible designs. We create unique tailor-made interior design solutions.

**SPACE PLANNING** - Efficient space planning combined with great ideas delivers creative and innovative spaces, which reflects your personality. From conception to completion, we offer custom design solutions that satisfies our client's requirements innovatively.

**TURNKEY PROJECT SOLUTION** -We take care of everything, from a shell and core space, to a fully furnished, ready to move in dream space. We also design, provide, and do installation of all MEP services.

**BESPOKE FURNITURE** -We pride ourselves on offering bespoke furniture experience for our discerning client.

**PROJECT MANAGEMENT** -We execute the same with utmost care regarding quality, time schedule above all creating an ambience suitable for that particular sector. Our clients have with full confidence entrusted "Creative Shelf" with all aspects of responsibilities including site survey, interior design, cost evaluation & turnkey interior outfitting of all the places.





# OUR INFRASTRUCTURE



CREATIVE SHELF IS GEARED TO PROVIDING  
A HIGH QUALITY SERVICE  
AT REALISTIC COSTS





# ORGANIZATION CHART



# KEY SECTORS



Bank



Villa



School



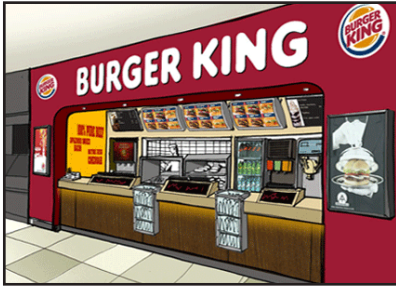
Kiosks and Exhibition



Retail



Corporate



F&B (Hospitality)



Landscape



Apparments



Health Care



Leisure



Government projects





**@ Deira - Dubai**

Creative Shelf LLC, has completed two branches for Standard chartered bank in Nasser Square- Deira, Dubai and Buhaira Corniche - Sharjah. The concept has an open space with customer service and express banking.

We worked as sub-contractor under the main contractor Al Reyami Interiors. All communication in regards to site conditions and local rules and regulations was well co-ordinated by us with the main contractor and in house consultants.

The average area of Deira branch was 2029 sq.mt. and area for Sharjah branch was 1890 sq.mt. Both projects were handed over as per schedule.





@ Deira







## Apartment - Oceana Tower

@ Palm Jumeirah - Dubai

Blue Heaven! This house brings outdoors in. The open-plan design with high ceiling ensure it remains cool and airy. Huge French windows are seen in the living area overlooking the deck, which further overlooks the serene picture perfect view.

It was quite a challenge to create a division of space in the living area. A informal seating area was introduced along with a casual long dining table. This left us with a space adjoining the French window.

We used the space to our advantage and modified the layout to ensure a spacious interior that would accommodate furniture and details that do justice to the concept.



## Apartment - Tiara

@ Palm Jumeirah - Dubai

Zen Interiors was commissioned by a Dutch businessman to create the interiors for his four bedroom apartment bought as a base for when working in Dubai. He owns numerous properties around the globe and likes to create a distinct flavor of the geographical location of each one. Being in the UAE, he wanted an Arabic-inspired design that captured the look and feel of 'modern-Arabia'. The chosen style was inspired by the Arabesque use of pattern repetition and strong architectural statements such as columns and architraves. However, lines are sleeker and colors are lighter to reflect a more contemporary Arabian ambience.

Warm and neutral colors characterize the furniture selection to match the elegant theme of the space. Creative Shelf worked as a sub-contractor for this penthouse- undertaking all the MEP works, flooring works and furniture which were built in house. There was a lot of co-ordination that went in for this project.

We continue to work unconditionally in every project with our client and take pride in it.



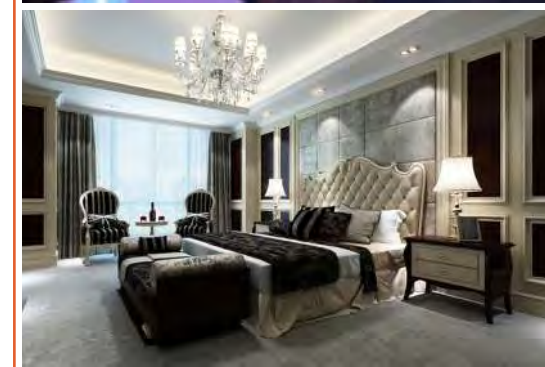
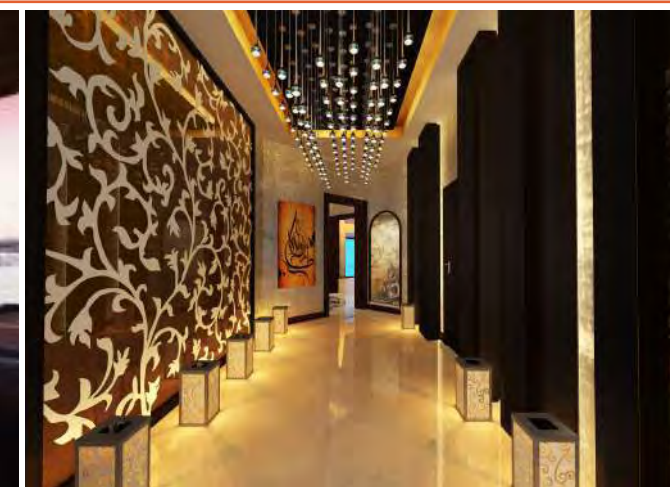


## Private Villa

@ Dubai Marina

This residential project is an unique blend of a modern urban pulse interwoven with some Human warmth. An open space idea is adopted for the space planning, of the interiors, to enable space efficiency and the creation of an orderly seating plan. The living room is designed for a functionally seamless space traversing through all areas, allowing guests and relatives to enjoy each corner of this space including the balcony area.

A lot of emphasis was laid on the "detailing" in the entire project. Each of the 4 bedrooms is unique in their own ways and fine tuned to the users' expectations. The modern contemporary theme across the bedrooms was supported with simple straight line furniture design.



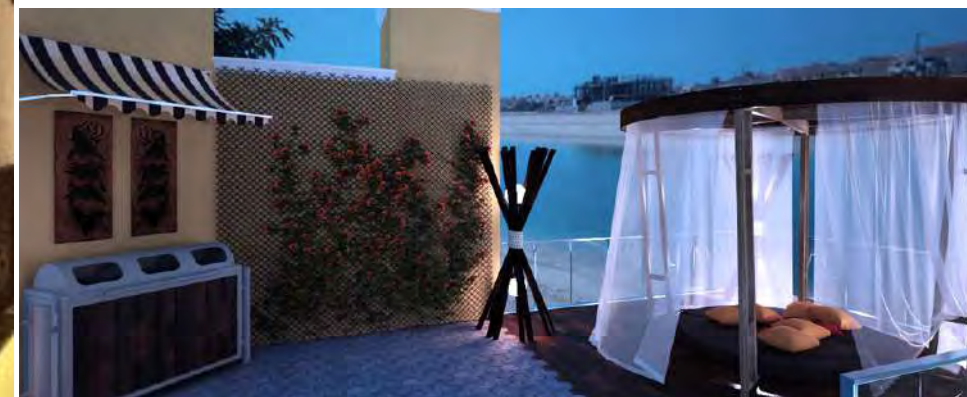
## Private villa

@ Palm Jumeirah

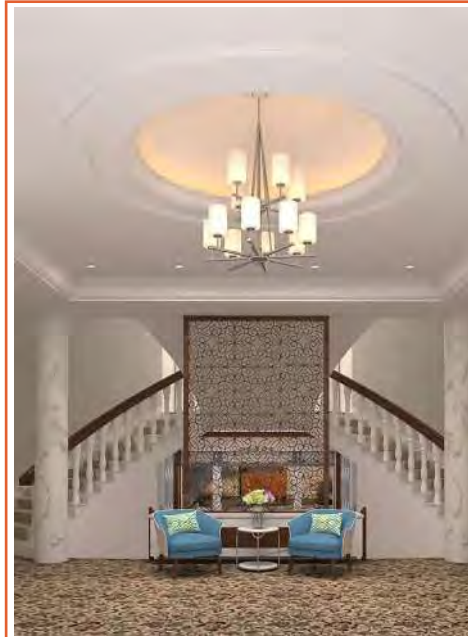
Sophistication, elegance and a true understanding of exquisite materials has led to the creation of this 2-storey villa, overlooking the beach in one of the Dubai's most affluent area. The stunning four bedroom villa of our client blends modern design with traditional craftsmanship.

Designed and executed by Creative Shelf to fulfill all the accommodation needs for a young and mature family.

Client knew his dream home will be interpreted with creative skill and sensitivity.



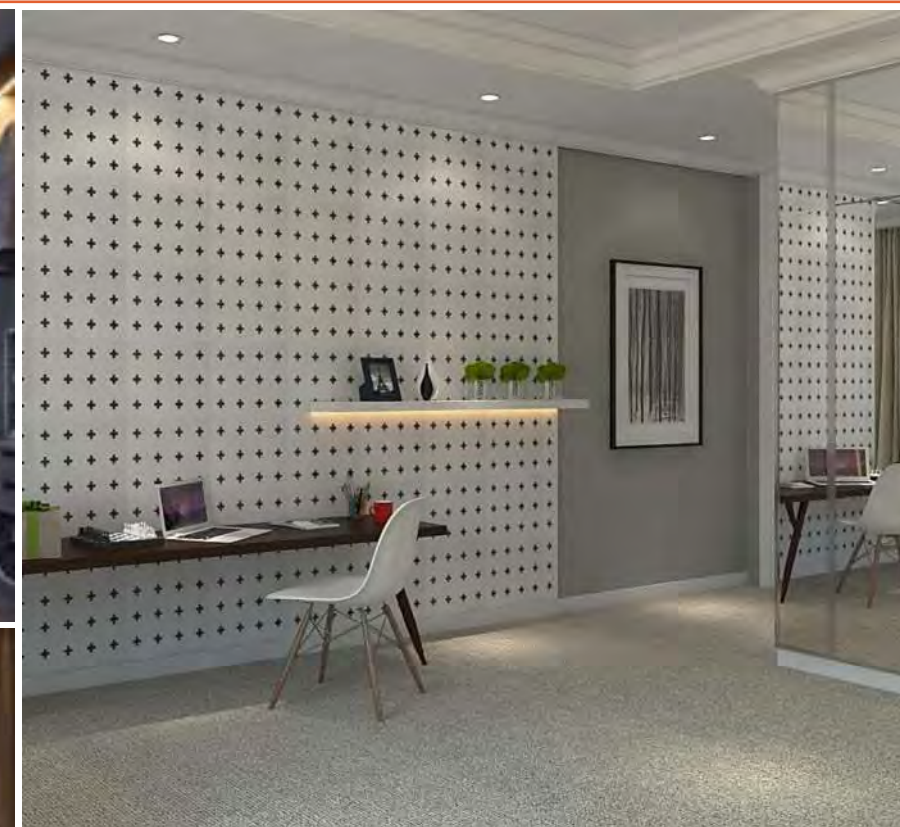
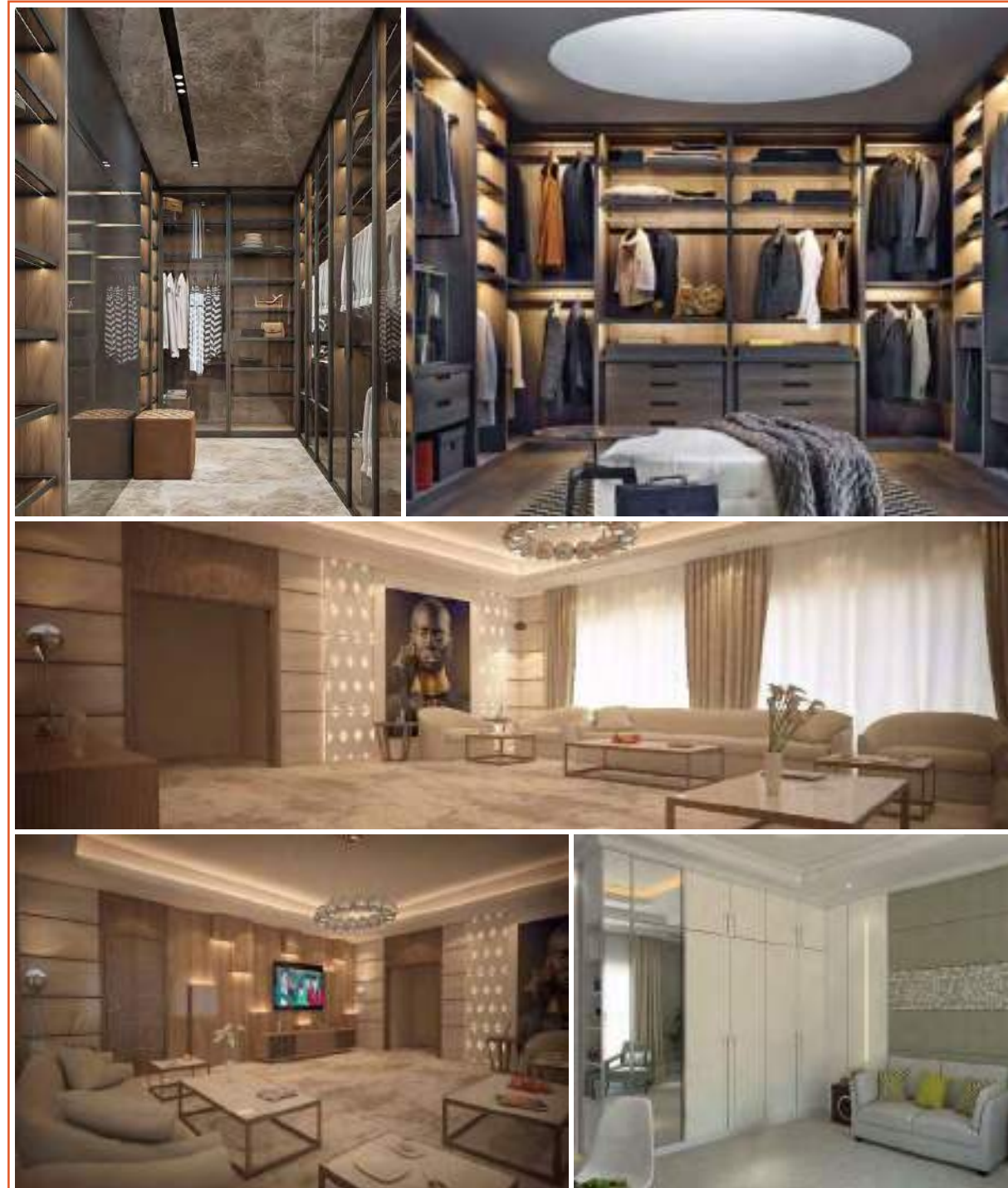




## Private Villa

@ Jumeirah Island





## Private Villa

@ Nad Al Sheba

Cleverly designed and impeccably built to showcase the luxury. The resulting home - a striking modern two-storey build composed of warm palette - is imaginative, but inherently comfortable. Impressive artwork in the living area.

Creative Shelf worked as sub-contractor under the main contractor 180 design solutions-Dubai. Every small detail was paid attention to. The complete joinery works including MEP where required was completed in 30 days.





## Private Villa

@ Al Khawaneej - Dubai

Carefully curated pieces, stellar accents and gorgeous furnishings come together, to create an opulent home, that'll whisk you away to the lap of luxury. The warm glow of the chandelier and wall cladding serenade you with warmth as you enter the home.



## Private Villa

@ Arabian Ranches

An arresting tapestry of soft colors, coupled with the use of no-compromise materials like veneer make this luxurious home, a spellbinding ode to all things contemporary. Boasting of stylish furniture, breathtaking wall texture designs, and splendid lighting, everything about this home is extravagantly chic. Mixed with earthy tones of wood, and interspersed with large windows that are framed with ethereal curtains. All add oodles of opulence, making this a home designed for pure, unadulterated luxury.





**GEMS**  
EDUCATION

**EXCELENCIA**  
FUNDACIÓN DE EXCELENCIA

جامعة جميرا  
JUMEIRA UNIVERSITY



**GEMS**  
EDUCATION  
@ **Fujairah**







جميرا  
جامعة جميرا  
JUMEIRA UNIVERSITY  
@ Dubai



EXCELENCIA  
POWERED BY MT EDUCARE  
@ Bur Dubai - Dubai







**Sense Game**  
@ JBR - Meraas - Dubai

## SERVICE ZONE

@ Oasis Mall - Dubai  
@ Shindagh Mall - Dubai  
@ Safer Mall - Sharjah

A well designed kiosk is vital to maintain perception of the company with existing client's suppliers and even your competitors in addition to attracting new business proposals. Service Zone caters to all repair works related to mobile and laptops.

The first kiosk of Service Zone was awarded to Creative Shelf - design & fit-out carried out in Oasis Mall - Dubai.

Later we were awarded all projects of Service Zone located in several locations like Oasis Mall, Shindagha Mall, Madina Mall in Dubai and Safer Mall in Sharjah.



@ Gitex

Exhibition stand for HP- Gitex, was executed under the main contractor Vali Contracting. The stand concept design needed to be modular. With boat shaped structure and stands, this got complicated.

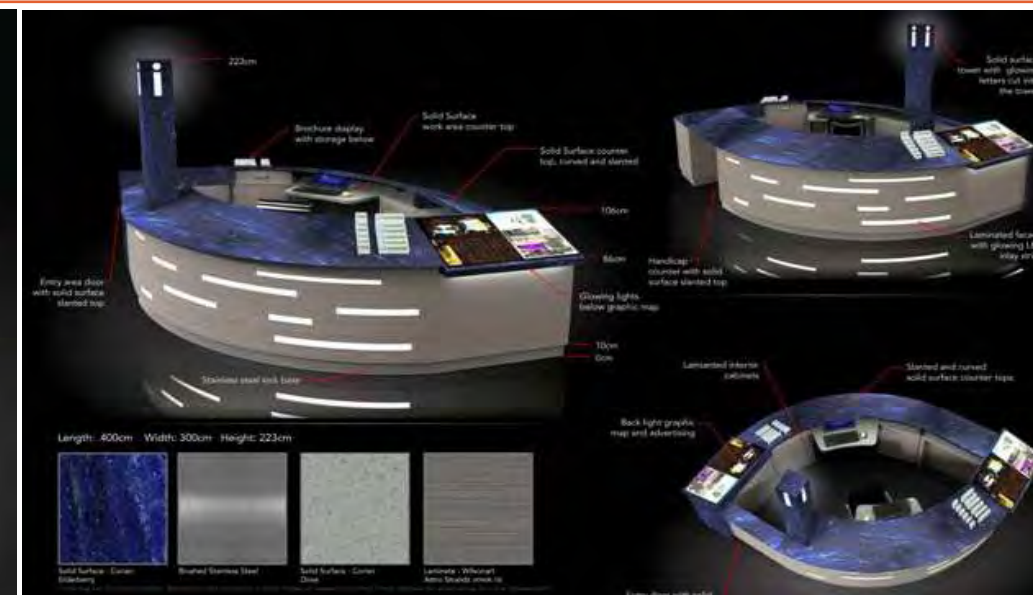




### @ Burj al arab & Etihad tower - Abu Dhabi

A custom made finest mattress making company from Sweden, wanted to exhibit their product in Burj Al Arab - Dubai. Creative Shelf got a chance to built a mock up for them. One in Burj Al Arab and other in Etihad tower - Abu Dhabi.

Maintaining the brand luxury, the materials used were veneer and soft upholstery. The mock up was ready within 24 hours.



### @ Riyadh & Jeddah - KSA

Being an information counter, the concept design needed to be modular in order to make it easy to use. Designed by STAK DESIGN - U.S.A.

Creative Shelf well co-ordinated with the designers in the U.S.A. The information counter was built in Dubai and shipped to Riyadh- Saudi Arabia for installation. Following to this, Creative Shelf built and installed one kiosk in Jeddah - Saudi Arabia for the same client.





### @ Multiple Locations

Creative Shelf has successfully completed 11 kiosks and shops for Galadari motor driving institute at several locations Al barsha, Lamcy plaza, Al khaleej centre, Deira, Oasis mall, DIP, Mercato mall, Dragon mart, Al Twar centre, Shindagha mall, Marhaba mall, etc. in Dubai, Sharjah and RAK.

A mobile unit to accommodate 2-3 staff has been designed. The works have been carried out as per the standards of the malls.



### @ Bin Saugat Centre - Dubai



### @ DIP - Dubai







### @ Meena Bazar - Bur Dubai

Manyavar is one of the India's leading men's clothing retailer offering quality fashion. This store is located in Meena Bazar - Dubai.

Energizing retail spaces are a result of accurate measured surveys, time-saving feasibility studies, layouts and detailed specifications.

The CNC machine cut logo serves as a design all over the shop. Creative Shelf worked as a sub-contractor under the main contractor Eminence Interiors. It was a turnkey project, including MEP and services. Average area of this shop was 1560 sq.m. The project was handed over within 60 days as per schedule.





@ Sunset Mall



GIZIA

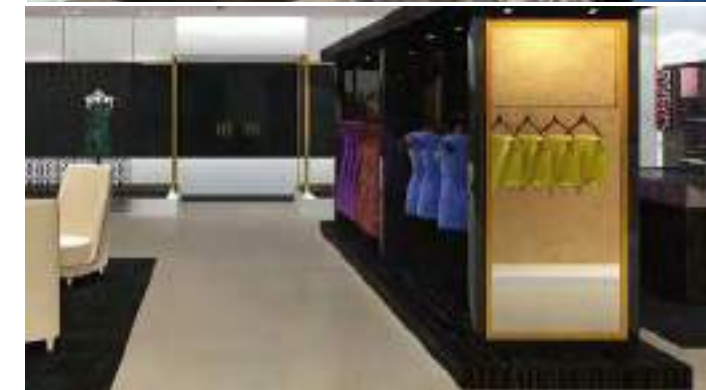


@ Mercato Mall  
@ Dubai Mall  
@ Sunset Mall

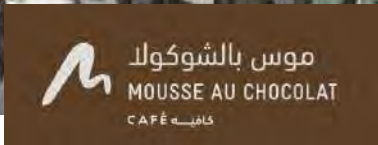
4G is under the brand name GIZIA, which was born and came into life in Istanbul. The first 4G by GIZIA showroom was done by Creative Shelf - Design & fit-out in Mercato Mall - Dubai. Later we were awarded all their projects across UAE.

Creative Shelf finished - design and execution of three more showrooms for the same client in various locations like GIZIA - Sunset mall, GIZIA - Outlet mall, Brandroom - Dubai mall. This shop carried the same legacy of 4G, but with gold plated MS Mashrabiya suspended from the ceiling consisting of the brand logo.

We did more than just design; we interpreted the imagination of the client. Through sketches and 3D perspectives, we brought life to a design that required seamless glass partitions, backlit columns, and logo Mashrabiya all over. This was a turnkey job, completed well on time with client's satisfaction.





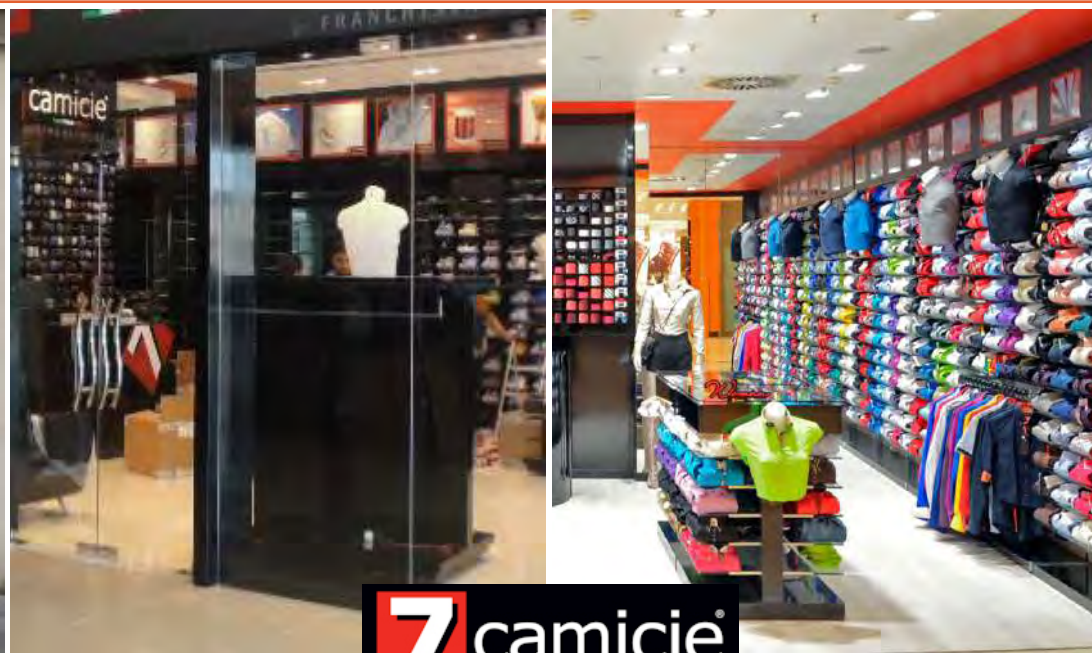


### @ City Walk & JBR

The chocolate mousse story began by a creation of Charles Farzi, the Swiss cook of the French King Louis XVI around 1755. CS carried out this project under A&T Interiors who were the lead contractors.

The stylish and space liberating all glass, sliding folding door system provides unobstructed view to exterior and beyond. CS had executed the complete Sliding wall system & fixed glass panels in collaboration with Huzefa Aluminium & Glass Company. Sliding wall system is the most space-efficient system. Panels can open to the inside, outside or to the center and can be parked snugly in the bay, opening up the entire front area. Ideal applications are large building entrances and wide shop fronts. Since the system does not require any bottom track at all, seamless integration of the outside with the inside is possible.

This standing slide and turn system comes with tempered safety glass, concealed fittings and flush bottom track for blurring the boundaries between the inside and the outside. This non-insulated aluminum folding door offers industry-leading impermeability, stability and burglar resistance as well as high operating convenience. This sliding system looks elegant in a traditional way, but also offers unmatched safety and insulation.



### @ Sunset Mall



### @ Grand Mall - Sharjah







**PURAVANKARA®**

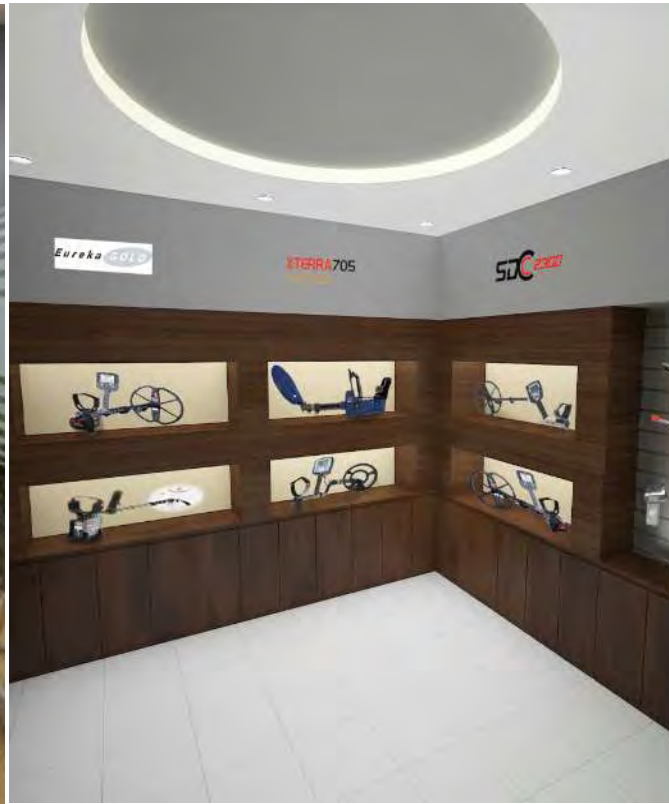
#### @ Citadel Tower - Dubai

The Group commenced operations in Mumbai and has established significant presence in the metropolitan cities of India and overseas in Center lake tower, Business bay - Dubai.

As an interior design firm, it is our role and responsibility to find coherent and innovative solutions, which keep our client satisfied and more importantly show to their employees that they are taking care of them by investing in their workplace.

Tall glass partitions offers visibility to the office area. Whereas, the MD's room is finished in dark veneer giving it a royal look.





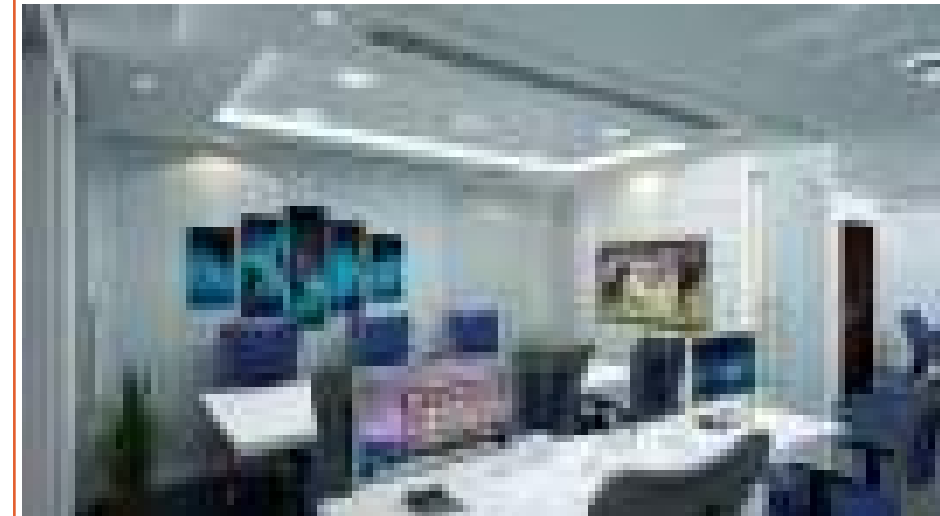
### @ Bur Dubai - Dubai

The design for Minelab is simple and modern, using elements and colors to reflect the brand's identity. Stepping in the office, one can feel the modern look, with glass partitions and elegant light fixtures. To give the office a vivid look and represent the brand, the combination of veneer & PU color is enhanced with red and grey funky elements.

Creative Shelf has a highly skilled team dedicated to undertaking small office design and fit-out projects. At Creative Shelf, we pride ourselves on delivering exceptional services and value for money.



### @ Dubai



## V Gulf Office

### @ JLT - Dubai

At Creative Shelf, we believe that quality office interiors and workspace design can be a highly influential determinant in business success.

It was blank canvas, the idea was to convey everything that we offer in terms of both product and design services. The seamless refinement of the glass enclosure containing a meeting room and other cabins. In the middle of the office area the staff sits at the custom workstations.

V Gulf office has a simple concept with clean lines. Full height glass partitions makes the office look big and open. Materials and fixtures gives a very elegant look. The Blue carpet and chairs elevates this white crisp office beautifully. This was a turnkey job, involving MEP services and approvals from government authorities. Creative Shelf finished this 1652 sq.ft. office area in 30 days of time.





## Dragon Oil LLC

@ ENOC House - Dubai

Dragon Oil Building ENOC L.L.C. is a leading integrated global oil and gas player operating across the energy sector value chain.

Fajr Interior being the Lead contractor to create the CEO's office for Dragon Oil's for which CS was appointed as the main contractor using premium European walnut wood and luxury Italian furniture from REFLEX. The ergonomics were integrated to improve workspace efficiency and design. Handmade leather sculpture artwork and smoked mirror clock with titanium hands add style to the design.



الخليج الإستثمارية ش.م.ع  
AL KHALEEJ INVESTMENT PJSC

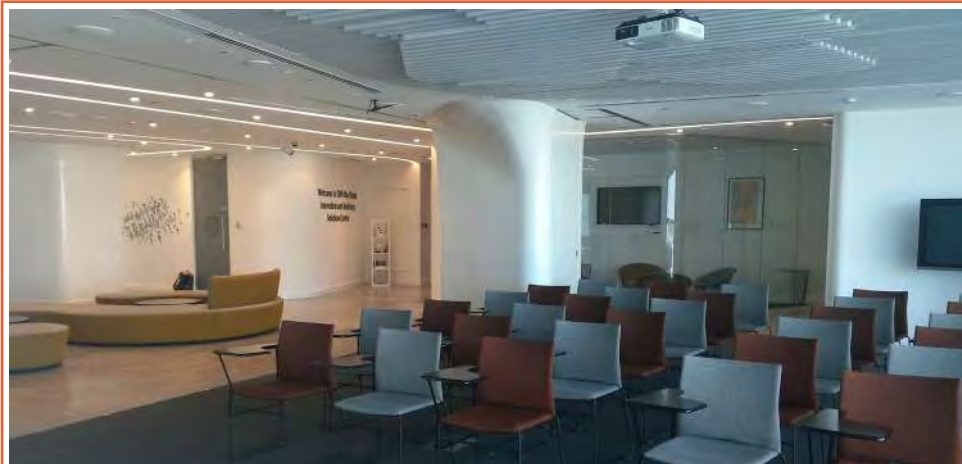
@ Sharjah

While we work with a broad range of clientele, ultimately their requirements are the same. They want a functional space that is fit for purpose, a space that reflects their corporate identity, looks great and encourages productivity.

Workspaces have evolved over time. Our intention is to create a fun yet efficient workspace that adapts to the needs of our clients. From the first step of space planning to the process of writing FF&E specifications, we design the office space with all aspects in mind that impact the wellbeing of team.







### @ Abu Dhabi

The design of the workplace can help you to attain the attraction and retain staff, improve productivity and give the right impression to your clients.

Welcome to IBM Abu Dhabi Innovation & Industry Solution Center.

Creative Lab being the Main contractor for this project, awarded Creative Shelf the joinery works for the IBM office. Flooded with natural light, the office embraces an open plan with inviting work and meeting spaces, and an open area for events and training.

Creative shelf completed the work as per the Abu Dhabi rules and regulations.

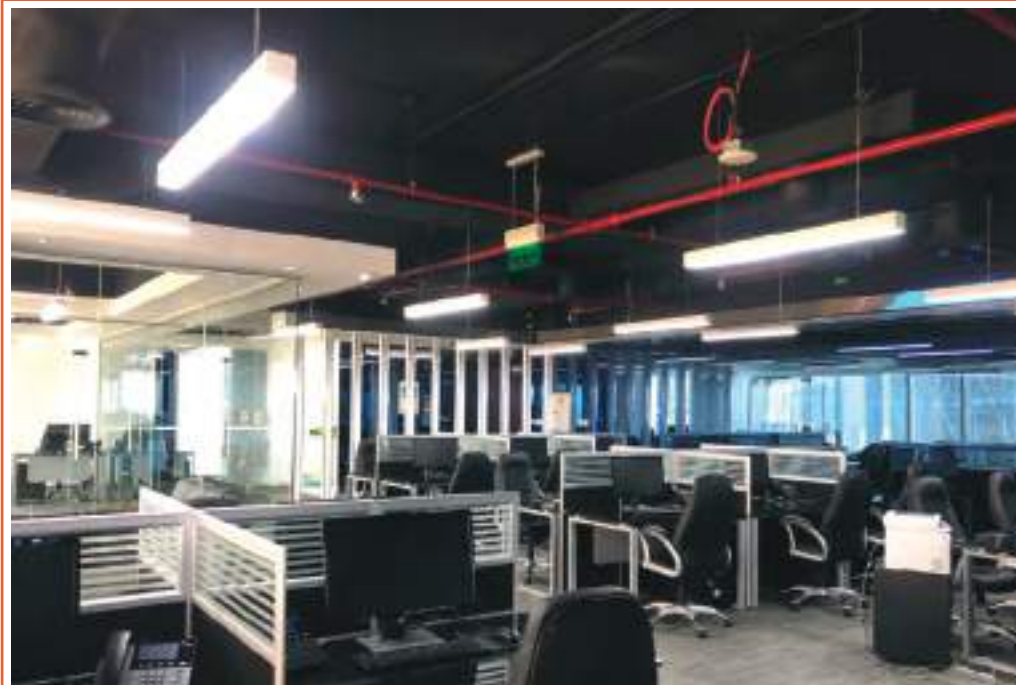


### @ Media City - Dubai

Commercial Interior Design is the process of creating and overseeing the construction or renovation of a commercial space. By this we mean, utilization of the space given to benefit the company and creating a suitable working environment for its employees. This involves using a space layout and assessing the positioning of the workstations.

The interiors of this office is aesthetically appealing and alluring to create a cool yet a very corporate work environment. With the use of bright color upholstery, the office space looks vibrant.

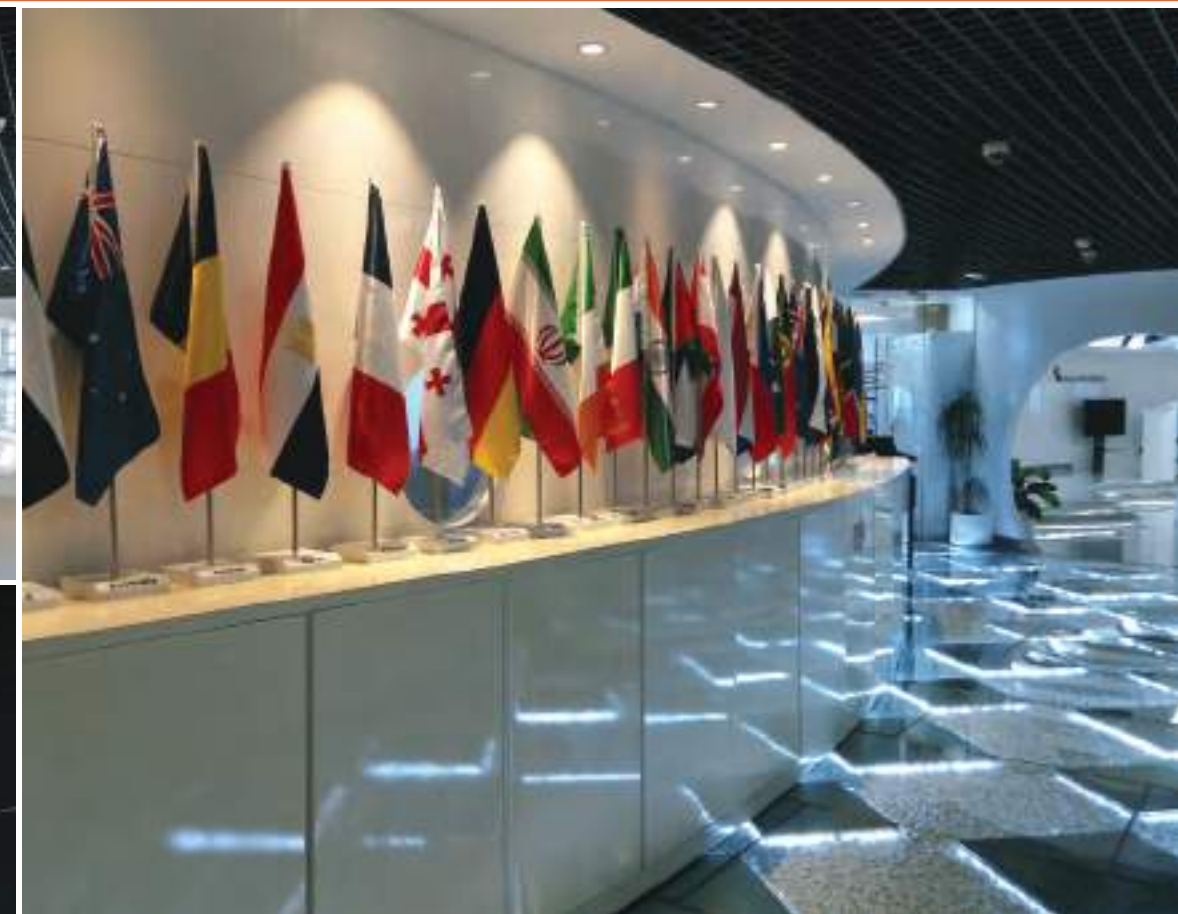




### @ Opel Tower - Business Bay

Our office designers, space planners and architectural technicians are the best and most experienced in the UAE. They work in a state of the art studio with the very latest equipment and software.

We have consciously avoided developing an “in house” office design style and instead concentrate on developing an understanding of a client’s specific requirement by Engaging you in a collaborative process, we are able to create a work-class workplace appropriate to your company’s individual office design requirements and budget.



### @ SZR - Dubai

Messe Frankfurt is one of the world’s leading trade show organizers. The design of the workplace can help you to attain the edge, allow you to streamline business processes and enhance your brand. Creative Shelf successfully completed Messe Frankfurt project located in Dubai. This project was completed in 21 days. CS was appointed by Al Reyami interiors as a fit-out contractor for this project.





### @ Bur Dubai & Barsha - Dubai

7Eleven is the largest convenience store chain which has more than 60,000 store in the world. And it is continuously growing with its excellence in franchise systems and high standards in day to day operation. Seven Emirates Investment LLC concluded Master Franchise Agreement with -7Eleven Inc located in Bur Dubai & Barsha- Dubai

Creative Shelf was appointed as fit-out contractor by Al Reyami Interiors. Two outlets for -7Eleven were executed on time by us.









@ Dubai Marina - Dubai



@ Dubai Mall - Dubai

The project comprised the renovation of an existing food outlet, to create the new modern outlet. Mall access, materials mobilization and limited working hours was a challenge as Creative Shelf had to schedule the work with limited working hours. The project was completed on time as per EMAAR standards.

CS was appointed by Scilla interiors as a fit-out contractor for this project.



@ Deira - Dubai

Bolshoi restaurant is located in Deira- Heart of Dubai. It was a refurbishment project, with marble wall cladding, carving on the ceiling, golden painted motifs on walls and ceiling.

This was a time constrain project. Creative Shelf finished this project in the month of Ramadan with limited working hours, as the management wanted to open this restaurant right after Ramadan.





## Moroc Lounge and Bar

@ Ibn Battuta Mall- Dubai

Restaurants and hotels devote more space than ever to bars! They can generate a vibrant ambience, encourage a sense of community and of course bring in a significant revenue. Today's successful bars rarely sit in the dark corner. Rather, they are up front and often center with decor lighting and menu.

Moroc Lounge and bar take on Moroccan culture. Inside, classic references- low tables with sofa and pouffe seating, wooden latticework- are given a contemporary twist.

Creative Shelf carried out the joinery works with considerable amount of MEP works, under the main contractor - Japan Art. This was a fast track project, finished in 40 days.







## Gazebo

Gazebo are a delightful addition to your garden or outdoor space. Combining style and functionality, they not only serve as a shelter or a platform for hosting events, but also add character to your outdoor space.

Creative Shelf designed and executed a completely closed gazebo for a private villa in Al Khawaneej area, made from red meranti KD wood, surrounded by a water body giving it a floating look. The whole idea was to make a warm and cozy space, decorated with family photos, low height seating and rug.

It was designed to be the pinnacle of the landscape.



## Pergola

Pergolas have always been popular in hot climates. Pergola, garden walk or terrace, roofed with an open framework over which plants are trained.

Creative Shelf believes the key to creating an effective garden space is to strike a balance of hard and soft landscaping. The garden's focal point was a wooden pergola, filled with cascading plants.

## Out House



## Landscape

An oasis built in the desert!

With clever landscaping, empty spaces can be transformed into lush garden oasis.

Tiered levels enhanced the feeling of space and created relaxation areas. Paving, decking gates and fences all play a part and work best when harmonized with the planting scheme and style of the house.





**Dr. Duriya Kamal**  
@ Deira - Dubai

**Dental club clinic**  
@ Aswaaq mall - Dubai







### @ Deira - Dubai

GLOBAL HAWK IMAGING & DIAGNOSTICS, winner of 2017 Health Care Awards, is a Dual Concept, world class, JCI Accredited chain of trusted diagnostic centers

The health care industry is going through a metamorphosis of sorts, wherein the mundane look is being replaced by fresh and warm decor, which spells comfort and positivity. We aim to facilitate this change in the healthcare industry- in order to revolutionize its designs, and speak character and charm.

This Centre breaks the orthodox monotony with use of a bright palette in splashes elevates the spaces giving it a warm, lively environment, also ensuring that complete functional and anthropometric parameters are met. From implementing the newest in design, we decidedly conceived a bright open space utilizing a neutral palette of white and shades of natural green.

The entire flooring is marked in shades of blue, grey & wooden planks vinyl



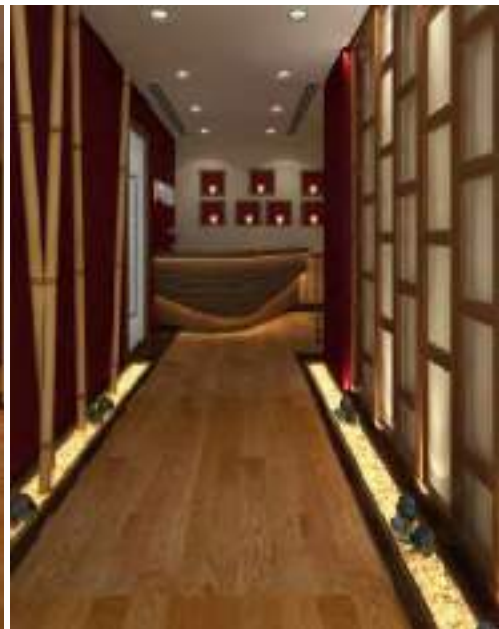
@ Al Qusais - Dubai





**MEDICLINIC**  
EXPERTISE YOU CAN TRUST.

@ Dubai Healthcare City - Dubai



## Al Sarab Spa

@ Rigga Road - Dubai

The spa is a value-adding amenity that is almost on par with the food and beverage outlets. The play of light was the main component in design. Using bamboo and earthen tones complete the look of a spa.

## Gym

@ Bur Dubai - Dubai



## Gym

@ Onyx Tower, SZR - Dubai



## Fun House



## Fun House

@ **Sunset Mall - Dubai**

Fun house is an adult supervised children's play centre. Based on ocean theme, huge ship shaped play area with slides, soft-ball pit, along with well equipped party hall with children friendly environment were designed.





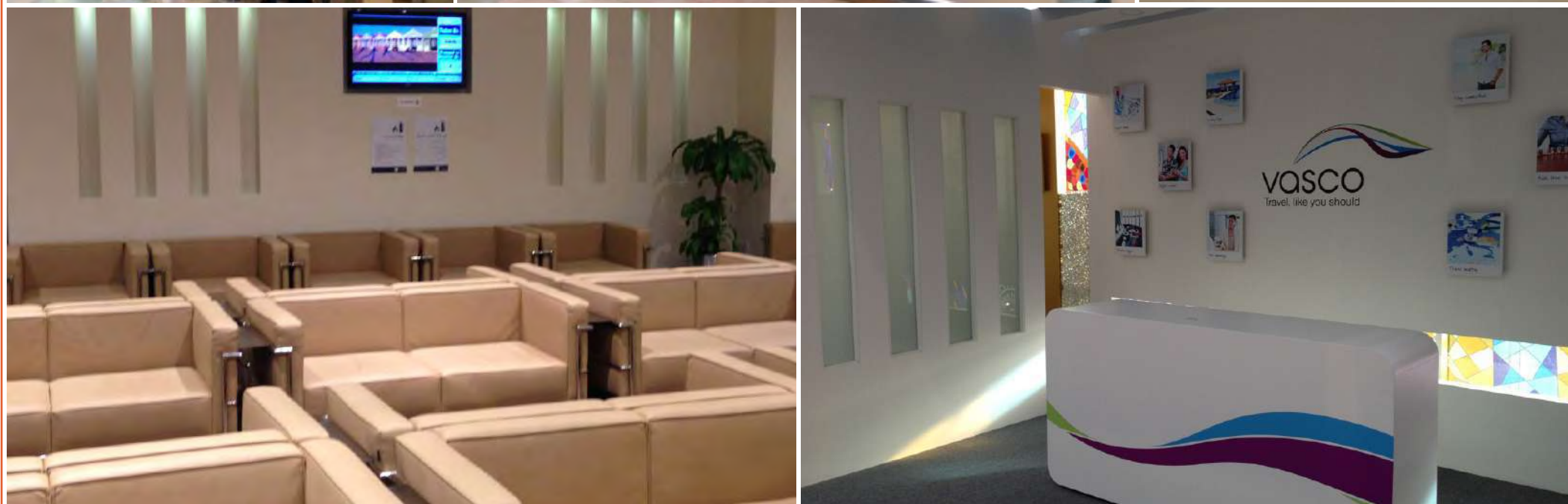
#### @ Dubai

Creative Shelf is proud to be a part of legoland. 450 benches made from MS and wood, 450 wooden chairs were built in house and delivered to Legoland under the main contractor ABC consultants-Dubai.



GOVERNMENT  
PROJECTS





**@ Wafi Mall - Dubai**  
**@ Mega Mall - Sharjah**  
**@ Mena Centre - AUH**

VFS Global is the world's largest outsourcing and technology services specialist for diplomatic missions and governments worldwide.

Creative Shelf was awarded the joinery works for this project. We worked on two more centers for VFS Global located in Mega Mall - Sharjah and Mena Centre - Abu Dhabi.



**@ Ajman Port**

Hutchison Ports Ajman is a port operator and logistics services provider situated on the Arabian Gulf.

Creative Shelf was awarded the renovation project for the complete area, including the teller counters, cash counters, manager's cabins, meeting rooms, etc. Though challenging in many aspects of the project from working only in the night (12am -6 am), un-loading the material in the same given time. Every minute was used efficiently in completing this project within the time frame.



## Dubai Immigration

**@ Karama - Dubai**

The Immigration Office is one stop shop immigration and visa solutions for residents living and working in the GCC countries. The Immigration Office is working under MARA and ICCRC accreditation. Future Sky being the Main contractor with CS executing the complete office as sub-contractor. The white and green colors on the walls, ceiling and flooring with cove lighting on all three sides lead to the bright and vivacious reception area.

Playing around with various dynamic shapes and forms on the panels and display units, we combined this with keeping a clear PU coat Decorative panels like Mashrabiya are an incredible way to bring authenticity to a commercial space with our experience in professional woodworking, we provided our client with beautiful and durable wooden wall cladding that will serve its purpose for the longest possible time.



## Dubai Airport Terminal 3

**@ Dubai Airport Terminal 3**

Dubai International Airport is the primary international airport serving Dubai, United Arab Emirates and is the world's busiest airport by international passenger traffic and the busiest airport in the world operating with only two runways.

Future Sky was the lead contractor under whom CS executed the joinery work.





## Police Headquarters

@ Dubai

This is a highly technical and sensitive sector, which has demanded a dedication and skillset that Creative Shelf are proud to have developed. Future Sky being the lead contractor, Creative shelf worked as a sub-contractor. Due to the confidential nature of some the projects we take, they can't be listed here, but please inquire for more information.



## Dubai Airport Terminal 1

@ Dubai Airport Terminal 1

Dubai International Airport is the primary international airport serving Dubai, United Arab Emirates and is the world's busiest airport by international passenger traffic and the busiest airport in the world operating with only two runways.

Future Sky was the lead contractor under whom CS executed the joinery work.



## Etihad Museum

@ Dubai

The Etihad Museum in Dubai opened to the public on 7 January 2017. It is situated in the city's historical Jumeirah District. The dynamic 21st century museum, Etihad museum is focused on inspiring its visitors with the story of the founding of the UAE.

The permanent exhibition of the Etihad Museum has been designed entirely by Empty and executed by CS. It narrates the history of the UAE in the years prior to the formation of the federation of states.

From the muse logical point of view, the aim was to create a dynamic and heterogeneous exhibition system with an attractive formal structure that would seamlessly integrate audiovisual media with the museum's abundant interactive components while hiding the accessible technical elements. As a result, most of the elements are made out of Corian. This highly resistant and thermo formable material enabled us to build an audiovisual "FALAJ" inspired by the traditional water channels used to irrigate fields in the Arabian Gulf.

The furnishings refer to the geography and landscapes of the UAE and each exhibition area therefore has its own identity, enriching the overall itinerary.

High level of co-ordination was done with the design team in Spain. All this required a detailed study on the best fixing methods to ensure that work is completed as planned.





## Group of Companies

Creative Shelf LLC (Interior division)  
[www.creativeshelf.ae](http://www.creativeshelf.ae)

Huzefa Aluminium & Glass Cont. LLC  
[www.huzefaglass.com](http://www.huzefaglass.com)

Creative Hardware  
(Hardware division)  
[www.creativehardware.ae](http://www.creativehardware.ae)