



**SHAKTI**

**PUMPING LIFE**







TAKING 'MAKE IN INDIA' FORWARD.







A foundation, strong & sound The foundation of Shakti Pumps (India) Ltd. was laid in 1982. From a humble beginning, we have gone from strength to become India's largest manufacturer of submersible pumps, motors, solar pumps, industrial pumps, controllers & invertors. An ISO 9001:2015, ISO 14001:2015 & ISO 45001:2018 company, our cutting-edge manufacturing facility with an installed capacity of 5,00,000 pumps per annum is located in Central India at Pithampur (M.P.).





## VISION

To become a company that constantly strives for quality and customer satisfaction by providing best pumping solutions with global benchmarks integrating health, safety and environmental considerations into all its business decisions and practices so that there will be

- Zero accident
- Zero liquid discharge
- Zero carbon footprint

and to emphasize best practices and strong organizational values justifying the interest of all stakeholders

## MISSION

To work relentlessly and come closer to our vision statement by offering an excellent work environment and training focused on trust, integrity and ethics empowering the workforce to offer products and services that exceed customer expectations ensuring value for money and handsome return to our employees and shareholders.







### **Quality, a way of life at Shakti.**

We accord paramount importance to quality. Be it practices, procedures or people, each and every aspect of our company, comes together to ensure that customers get products and services of the highest quality. Our quality control and testing labs are amongst the most advanced set-ups in the country- enabling us to meet international quality standards consistently.



### **Our technology, our strength.**

We employ the best-of-world technology to manufacture our products. Our state-of-the-art plant has cutting-edge Japanese and European machinery. The use of robots ensures precision of the highest level. Ultra-modern CNC machines, stamping machines, cathode electrode deposition plant, etc. speak volumes about our technological strength.







#### **SOLAR DC SUBMERSIBLE PUMPS**

Head Max. : 300 m.  
Flow Max. : 240 m<sup>3</sup>/h.  
Power Range: 900 to 55000 watt

#### **SOLAR DC SURFACE PUMPS**

Head Max. : 50 m.  
Flow Max. : 140 m<sup>3</sup>/h.  
Power Range: 300 to 24000 watt



#### **SOLAR OPEN WELL PUMPS DCSOP SERIES**



Head Max. : 30 m  
Flow Max. : 32200 LPD  
Power Range : 300W - 600W

#### **MICRO SURFACE PUMPSET DCSSUP SERIES**



Head Max. : 10 m  
Flow Max. : 72900 LPD  
Power Range : 300W - 500W

#### **POSITIVE DISPLACEMENT PUMPS**



Head Max. : 250m  
Flow Max. : 150 LPM  
Power Range : 500 - 4800 Watt

#### **4" PREMIUM PLUG & PLAY PUMP DCSOP SERIES**



Head Max. : 120 m  
Flow Max. : 40 LPM  
Power Range : 1 HP - 3 HP

It includes Pump, Motor,  
Cable and MCB

#### **SUBMERSIBLE PUMPS & MOTORS QF SERIES**



Head Max. : 660 m  
Flow Max. : 440 m<sup>3</sup>/h  
Power Range : 0.37 kW to 250 kW



**OPENWELL PUMPS**  
**SOMB SERIES**



Head Max. : 33 m  
Flow Max. : 22 m<sup>3</sup>/h  
Power Range : 0.5 - 2 hp

**END-SUCTION LONG  
COUPLED PUMPS**  
**SNK SERIES**



Head Max. : 168 m  
Flow Max. : 300 m<sup>3</sup>/h  
Power Range : 02 to 220 HP

**END-SUCTION  
SINGLE SHAFT PUMPS**  
**SMB SERIES**



Head Max. : 78 m  
Flow Max. : 126 m<sup>3</sup>/h  
Power Range : 0.5 to 15 HP

**OPENWELL PUMPS**  
**JALPARI SERIES**



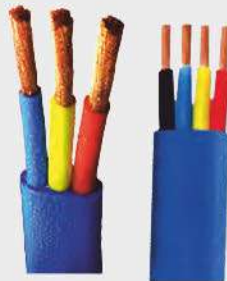
Head Max. : 10 m  
Flow Max. : 106810 LPD  
Power Range : 500W - 900W

**END-SUCTION CLOSED  
COUPLED PUMPS**  
**SNB SERIES**



Head Max. : 96 m  
Flow Max. : 192 m<sup>3</sup>/h  
Power Range : 0.37 to 50 HP

**CABLE**



Flat Cable | 3 Core & 4 Core

**OPENWELL SHOS CA/SA SERIES**



Head Max. : 94 m.  
Flow Max. : 158 m<sup>3</sup>/h.  
Power Range: 2 HP to 20 HP

**UPVC COLUMN PIPES**  
**SWR PIPE**  
**PVC RIGID PIPE**  
**HDPE PIPE**  
**SPRINKLER PIPE**  
**CPVC PIPE**  
**CASING PIPE**  
**ADAPTER SS & CI**



**DRIP IRRIGATION (PLAIN DRIP)**

Max. Working Pressure : 4 kg/cm<sup>2</sup>  
Size : 12mm, 16mm, 20mm, 32 mm  
Thickness : ISI class I and class II  
Coil Length : 100m and 300 m



**DRIP IRRIGATION (ROUND DRIP)**

Max. Working Pressure : 2.5 kg/cm<sup>2</sup>  
Discharge : 2 LPH & 4 LPH  
Sizes : 12 mm, 16 mm, 20 mm  
Thickness : IS I Class I, II & Class III  
Dripper Spacing : 30 cm to 150 cm  
Filtration required : 130 micron  
Coil Length : 300m, 500m & 100m



**DRIP IRRIGATION (FLAT DRIP)**

Max. Working Pressure : 2.5 kg/cm<sup>2</sup>  
Discharge : 1 LPH, 2 LPH & 4 LPH  
Sizes : 12 mm, 16 mm, 20 mm  
Thickness : 14 MIL (Safer), IS Class I, II & Class III  
Dripper Spacing : 30 cm to 150 cm  
Filtration required : 130 micron







#### VERTICAL MULTI-STAGE CENTRIFUGAL PUMPS

SCR, SCRI, SCRN SERIES



Head Max. : 320 m  
Flow Max. : 3200 LPM  
Power Range : 0.5 to 75 HP

#### SERO VERTICAL MULTISTAGE PUMP SERO SERIES



Head Max. : 166 m  
Flow Max. : 100 LPM  
Power Range : 1.5 HP - 3 HP

#### PRESSURE BOOSTER SCM SERIES



Head Max. : 130 m.  
Flow Max. : 30 m<sup>3</sup>/h.  
Power Range : 0.5 HP to 10 HP

#### SCR, SCRN HIGH HEAD PRESSURE BOOSTER



Head Max. : 475 m.  
Flow Max. : 150 m<sup>3</sup>/h.  
Power Max. : 75 kW.

#### DOMESTIC WATER PRESSURE BOOSTER PUMPS

SJP SERIES



Head Max. : 40 m  
Flow Max. : 4.5 m<sup>3</sup>/h  
Power Max. : 0.75 kW

#### IMMERSIBLE PUMPS SMTR SERIES



Head Max. : 330 m  
Flow Max. : 80 m<sup>3</sup>/h  
Power Range : 0.5 to 60 HP

#### HYDROPNEUMATIC BOOSTER SYSTEMS HYPN SERIES



Head Max. : 5.5 bar  
Flow Max. : 1080 m<sup>3</sup>/h  
Power Max. : 75 kW

#### PRESSURE BOOSTER PUMPS

SH, SHI, SHN SERIES



Head Max. : 60 m  
Flow Max. : 14 m<sup>3</sup>/h  
Power Range : 0.5 hp to 3 hp

#### RO PUMPS



Head Max. : 149 m  
Flow Max. : 4.8 m<sup>3</sup>/h  
Power Range : 0.37 - 2.2 kW



#### SOLAR SHIMHA DRIVE



- 0.75 HP to 10 HP
- 6 Amp to 20 Amp

Suitable for solar pumping, Industrial drive HVAC and SPM system.

#### NANDI UNIVERSAL DRIVE



- 10 HP to 100 HP
- 25 Amp to 100 Amp

Suitable for HVAC system, conveyor belt, Industrial fan and solar pump.

#### LOTUS UNIVERSAL DRIVE



- 3000V to 7500V
- Suitable for 3 Phase

All In one solution for driving of various motors like AC-IM, PMSM, IPMSM, S4RM, etc.

#### DU DT FILTER



- 10 HP to 100 HP
- 25 Amp to 150 Amp

Suitable for various motors for solar pumps and other general application where cable length is more than 70 m.

#### SHAKTI RMS DONGLE



IOT Solution

Suitable for Softly remote monitoring & control.

#### KALPAVRIKSHA HYBRID INVERTER



- 3 HP to 10 HP
- 3 kW to 10 kW (Grid Tie (3 Phase))

Suitable to run pump motor set for agriculture feed extra power to grid for saving money to farmers / users.

#### KALPAVRIKSHA (USPC) UNIVERSAL SOLAR PUMP CONTROLLER



- 3 HP to 10 HP
- 3 kW to 10 kW (VFD - 3 Phase)

Suitable for Agrarian application such as pump, thresher, chaff, cutter & aata chakki.

#### KALPAVRIKSHA GRID TIE INVERTER



- 3 kW to 10 kW (VFD - 3 Phase)

Suitable for rooftop solar installation, grid tie in domestic as well as commercial establishments.

#### SUN SHAKTI HYBRID INVERTER / GRID TIE INVERTER



- 1 KVA to 6 KVA (1Phase)
- Hybrid / Grid tie Inverter

Suitable for domestic, small & big commercial establishment.

#### A1 SMART STARTER



- 0.5 HP to 150 HP (1 Phase)
- 0.5 HP to 15 HP (3 Phase)

Suitable for 1 Phase / 3 Phase IM.

#### ELITE SOFT STARTER



- 15 HP to 35 HP
- 25 Amp to 35 Amp

Suitable for Softly start and stop agricultural and industrial three phase IM motors.



#### FIRE PUMPS



Pressure Max. : 30 bar  
Flow Max. : 4550 LPM

#### WASTE WATER PUMPS SVX SERIES



Head Max. : 15 m  
Flow Max. : 20 m<sup>3</sup>/h  
Power Range : 1 to 1.5 hp

#### WASTE WATER PUMPS SDW SERIES



Head Max. : 31 m  
Flow Max. : 180 m<sup>3</sup>/h  
Power Range : 0.75 to 7.5 kW

#### WASTE WATER PUMPS SSEG Series



Head Max. : 46 m  
Flow Max. : 17 m<sup>3</sup>/h  
Power Range : 0.9 to 4 kW

### Special Make Products

#### NON SELF-PRIMING PUMPS NSP SERIES



Head Max. : 48 m  
Flow Max. : 3 m<sup>3</sup>/h  
Power Range : 0.5 to 1 HP

#### SELF-PRIMING PUMPS CRP SERIES



Head Max. : 60 m  
Flow Max. : 3.5 m<sup>3</sup>/h  
Power Range : 0.5 to 1 HP

#### SELF-PRIMING PUMPS MEQH SERIES



Head Max. : 40 m  
Flow Max. : 150 m<sup>3</sup>/h  
Power Range : 0.5 to 1 HP

#### HORIZONTAL SPLIT CASE PUMPS SHS SERIES



Head Max. : 30 m  
Flow Max. : 32200 LPD  
Power Range : 300W - 600W

#### SHALLOW WELL PUMPS SSW SERIES



Head Max. : 39 m  
Flow Max. : 160 m<sup>3</sup>/h  
Power Range : 0.5 to 1 HP

#### SLOW SPEED PUMPS SSS SERIES



Head Max. : 39 m  
Flow Max. : 58 LPM  
Power Range : 0.5 to 1 HP





## RESEARCH AND DEVELOPMENT

Recognized and Approved in-house R&D by



भारत सरकार  
विज्ञान और प्रौद्योगिकी मंत्रालय  
विज्ञान और प्रौद्योगिकी विभाग

GOVERNMENT OF INDIA  
Ministry of Science and Technology  
Department of Science and Technology  
Technology Bhavan, New Mehrauli Road  
New Delhi - 110016

**More than 100 engineers including PhD, M. Techs and Bachelors from premier institutes of India are working continuously in the development and enhancement of electronics/power electronic products**

**Dedicated team for IoT, Mobile Apps and Server based control of our products**

**World class equipments and facilities dedicated to R&D**

**Collaboration project with Govt. of India in form of Uchchatar Avishkar Yojana (Shakti Pumps + IITD + MHRD + Ministry of Power), PM fellowship program etc. wherein academia and industry collaboration for assured better future.**

**R&D Collaborations with IISc Bangalore, IIT Delhi, SGSITS Indore, IIST Shibpur etc**

**32+ patents and several research papers in journals and conferences**

**Approximately 5 % of revenue investment in R&D**







## Solar Pumps

### SOLAR DC SUBMERSIBLE SERIES

#### Applications

- Ground water lowering
- Irrigation systems
- Industrial Application
- Drip Irrigation, Sprinkler
- Tank / Cistern filling
- Wildlife Refuge

#### Features

- High flow system for faster tank fill and significant water output.
- Proven motor and pump technology for long-term reliability
- Clean and pollution free energy, Eco-friendly.
- Ideal for remote areas, where electricity is not available or availability is capital intensive.
- Suitable for day time Irrigation, Continuous supply for 6-8 hours in a day.
- Soft start feature prevents water hammer and increases system life Easy to operate.
- Simple installation and maintenance free.

#### Controller Features

An easy to use Interface is provided to enhance configurability and enable remote system monitoring.

- Supports wide varieties of motors
- Graphical lcd for easy operation
- Powered with remote monitoring system

#### Protection Features

- Dry run Protection.
- Overload Protection
- Open Circuit Protection
- Short Circuit Protection
- Over Heat

#### Technical Specification

Head Max : 300 m.  
Flow Max : 240 m<sup>3</sup>/h.  
Power Range: 900 to 55000 watt



### POSITIVE DISPLACEMENT SERIES

#### Applications

- Ground water lowering
- Irrigation systems
- Industrial Application
- Drip Irrigation, Sprinkler
- Tank / Cistern filling
- Wildlife Refuge

#### Features

- High flow system for faster tank fill and significant water output.
- Proven motor and pump technology for long-term reliability
- Clean and pollution free energy, Eco-friendly.
- Ideal for remote areas, where electricity is not available or availability is capital intensive.
- Suitable for day time Irrigation, Continuous supply for 6-8 hours in a day.
- Soft start feature prevents water hammer and increases system life Easy to operate.
- Simple installation and maintenance free.

#### Controller Features

An easy to use Interface is provided to enhance configurability and enable remote system monitoring.

- Supports wide varieties of motors
- Graphical lcd for easy operation
- Powered with remote monitoring system

#### Protection Features

- Dry run Protection.
- Overload Protection
- Open Circuit Protection
- Short Circuit Protection
- Over Heat

#### Technical Specification

Head Max : 250 m.  
Flow Max : 150 LPM  
Power Range : 500 to 4800 watt



### SOLAR DC SURFACE SERIES

#### Applications

- Ground water lowering
- Irrigation systems
- Industrial Application
- Drip Irrigation, Sprinkler
- Tank / Cistern filling
- Wildlife Refuge

#### Features

- High flow system for faster tank fill and significant water output.
- Proven motor and pump technology for long-term reliability
- Clean and pollution free energy, Eco-friendly.
- Ideal for remote areas, where electricity is not available or availability is capital intensive.
- Suitable for day time Irrigation, Continuous supply for 6-8 hours in a day.
- Soft start feature prevents water hammer and increases system life Easy to operate.
- Simple installation and maintenance free.

#### Controller Features

An easy to use Interface is provided to enhance configurability and enable remote system monitoring.

- Supports wide varieties of motors
- Graphical lcd for easy operation
- Powered with remote monitoring system

#### Protection Features

- Dry run Protection.
- Overload Protection
- Open Circuit Protection
- Short Circuit Protection
- Over Heat

#### Technical Specification

Head Max : 50 m.  
Flow Max : 140 m<sup>3</sup>/h.  
Power Range: 300 to 24000 watt







## Submersible Pumps

### QF V4, V6, V8, V10, V12 & V14 SERIES

#### Applications

- Ground water supply to water works
- Irrigation, Domestic water supply
- Pressure boosting units, Ponds
- Fountains, Industrial water supply
- Gardens, Sprinkler Systems and Mining

#### Features

- High operating efficiency
- Highly durable & hygienic
- Good resistance to sand
- Can be easily dismantled and repaired
- Long service life as all components are stainless steel

#### Technical Specification

Head Max. : 660 m.  
Flow Max. : 440 m<sup>3</sup>/h.  
Liquid Temp. : 0 to 60°C  
Power Range : 0.37 kW to 250 kW



## Submersible Motors

### SS 100, 150, 200, 250 REWINDABLE SUBMERSIBLE MOTOR

#### Applications

Submersible motors are suitable to couple with deepwell submersible pumps end, used for Irrigation, Domestic water supply Fountains, Industrial water supply, Pressure Boosting units, Ponds, Gardens, Sprinklers Systems and Mining

#### Features

- High operating efficiency
- Water cooled rewindable motor
- Can be easily dismantled & repaired
- Available an standardised NEMA head and shaft end
- Sic Shaft Seal for maximum sand protection.

#### Motor Sizes

MCIP 100 Motor : 0.37 to 5.5 kW  
SML 150 Motor : 2.2 to 15 kW  
MTSF 150, 200 & 250 Motor : 4.0 to 185 kW



\* Considering continuous product development the information/performance/specifications and illustrations disseminated in this catalogue are subject to change without notice.





## Submersible Motors

## Water Filled Submersible Pumps & Motors

## Multistage Submersible Pumps

### PREMIUM 100 & SUPER PREMIUM 150 SSDM SERIES 50 Hz

#### Applications

Submersible motors are suitable to couple with deepwell submersible pumps end, used for irrigation. Domestic water supply Fountains, Industrial water supply, pressure Boosting units, Ponds, Gardens, Sprinklers Systems and Mining

#### Features

- Hermetically sealed Stator, Anti Track, Self Healing Stator
- Resin prevents motor burn out
- Removable "water resistant lead connector"
- Available an standardised NEMA head and shaft end
- Water lubricated radial and thrust bearings
- High efficiency electrical design low operation cost, cool running winding



#### Motor Sizes

Premium 100 Motor : 0.37 to 7.5 kW  
Super Premium 150 Motor : 4 to 22 kW

#### Applications

- Domestic and Industrial water supply
- Sprinkler and drip Irrigation systems
- Farmhouses, Nurseries

#### Features

- Motor easy to repairable and rewindable
- Motor withstand wide voltage 180/240V/ 50Hz for single phase

#### Technical Specification

Head Max.	: 285 m
Flow Max.	: 350 LPM
Power Range	: 0.5 to 5.5 hp
Liquid Temp. Max	: 30°C



### SSPO 5 SERIES 50 Hz

#### Applications

As a result of their high efficiency and reliability they are suitable for use with clean water in domestic, civil & agricultural applications such as the distribution of water in combination with pressure sets, for the irrigation of gardens and allotments and for pressure boosting, etc.

#### Features

- High Quality Of Stainless Steel Motor Body
- Build In Winding Parts
- Stainless Steel Shaft
- Stainless Steel Impeller

#### Technical Specification

Head Max.	: 78 m
Flow Max.	: 130 LPM
Power Range	: 1.0 to 2.0 hp
Liquid Temp. Max	: 30°C







## End-Suction Long Coupled Pumps

### SNK SERIES

#### Applications

- The end suction pumps are especially suitable for water distribution in large scale irrigation system.
- Industrial liquid transfer
- HVAC
- Fire fighting system

#### Features

- The pumps have back pull out design enabling the removal of the motor without dismantling the pump.
- The pump can be driven by diesel engine, DG set and TEFC motor
- Dynamically balanced mechanical seal C vs. SIC / Optional.

#### Technical Specification

Head Max.	: 168 m
Flow Max.	: 300 m <sup>3</sup> / h
Power Range	: 2.0 to 220 hp
Liquid Temp. Max	: 120 °C
Degree of Protection	: IP 55 / 54
Class of Insulation	: 'H'
Type of Duty	: S1



## End-Suction Close Coupled Pumps

### SNB SERIES

#### Applications

- The end suction pumps are especially suitable for water distribution in large scale irrigation system.
- Industrial liquid transfer
- HVAC
- Fire fighting system

#### Features

- The pumps have back pull out design enabling the removal of the motor without dismantling the pump.
- Dynamically balanced mechanical seal C vs. SIC / Optional.

#### Technical Specification

Head Max.	: 96 m
Flow Max.	: 192 m <sup>3</sup> / h
Power Range	: 0.37 HP to 50 HP
Liquid Temp. Max	: 120 °C
Degree of Protection	: IP 55 / 54
Class of Insulation	: 'H'
Type of Duty	: S1



## End-Suction Single Shaft Pumps

### SMB SERIES

#### Applications

- The end suction pumps are especially suitable for water distribution in large scale irrigation system.
- Industrial liquid transfer
- HVAC
- Fire fighting system

#### Features

- Ultra modern design
- Superior design material as well as manufacturing process assure longer life

#### Technical Specification

Head Max.	: 78 m
Flow Max.	: 126 m <sup>3</sup> / h
Power Range	: 0.5 HP to 15 HP
Liquid Temp. Max	: 120 °C
Degree of Protection	: IP 55 / 54
Class of Insulation	: 'H'
Type of Duty	: S1



## Open-Well Pumps

### SHOS CA/SA SERIES

#### Applications

- Rural and Urban water installations
- Water supplies for high rise buildings
- Water circulating system for lawn & gardens
- Agriculture lift sprinkler and drip irrigation
- Decorative water fountains

#### Features

- Ultra modern design
- Superior design materials and manufacturing processes assure a longer life
- Easy installation
- Silent vibration free running

#### Technical Specification

Head Max.	: 94 m
Flow Max.	: 156 m <sup>3</sup> / h
Power Range	: 3 HP to 20 HP
Liquid Temp. Max	: 33 °C
Degree of Protection	: IP 58
Type of Duty	: S1







## Vertical Multistage Centrifugal Pumps

## SCR, SCRN, High Head Pressure Booster Pumps

### SCR, SCRI & SCRN SERIES

#### Applications

The pumps are suitable for liquid transfer & pressure boosting in :

- Washing systems in Industries
- HVAC
- Water supply systems
- Water treatment systems
- Fire fighting systems
- Industrial plants
- Boiler feeding systems
- Pharma plants

#### Features

- High operating efficiency
- Suitable for slightly aggressive liquids
- Dynamically Balance Mechanical Seal : Sic vs Sic / Optional
- Precise parts for hygiene
- Space saving

#### Technical Specification

Head Max.	: 320 m
Flow Max.	: 3200 LPM
Power Range	: 0.5 to 75 HP
Liquid Temp.	: -40 to +180 °C, on request after +120 °C
Degree of Protection	: IP 55
Class of Insulation	: 'H'
Type of Duty	: S1



### SCR, SCRN, HIGH HEAD PRESSURE BOOSTER

#### Applications :

The SCR, SCRN high-pressure series is a multi-purpose pump Max suitable for a variety of different applications demanding reliable and cost-efficient supply.

SCR, SCRN handles a variety of liquids from potable water to industrial liquids within a very wide temperature, flow and pressure scale. Below is a list representing some general examples of applications requiring a high pressure.

#### Pressure Boosting

- Process water systems
- Washing and cleaning system in Industries
- High-pressure washdown systems
- Boiler feed and condensate system

#### Water Treatment

- Ultra-filtration systems
- Reverse osmosis systems.

#### Features

- High operating efficiency
- Precise parts for hygiene
- Suitable for slightly aggressive liquids
- Space saving
- Dynamically Balance Mechanical Seal : Sic vs Sic / Optional

#### Technical Specification

Head Max.	: 475 m
Flow Max.	: 150m <sup>3</sup> / h
Power Max.	: 75 kW
Liquid Temp.	: 0 to +120 °C
Degree of Protection	: IP 55
Class of Insulation	: 'H'
Type of Duty	: S1







## Immersible Pumps

## Vertical Multistage Pumps

### SMTR SERIES

#### Applications :

- Boring
- Milling
- Grinding
- Spark Erosion
- Wire Cutting
- Turning
- Chilling
- Part Washing
- Condensate System
- Pumping of cooling lubricants for machine tools

#### Features :

- Excellent hydraulic performance
- Study and compact design
- Stainless steel shaft
- Dynamically balanced rotation of all parts
- Quiet and maintenance free
- Interchangeability for easy replacement

#### Technical Specification :

Head Max.	: 330 m
Flow Max.	: 80 m <sup>3</sup> / h
Power Range	: 60 HP
Liquid Temp.	: -10 to +90 °C
Degree of Protection	: IP 55
Class of Insulation	: 'H'
Type of Duty	: S1



### RO SERIES

#### Applications

- Industrial & Domestic Pressure Booster
- Domestic Water Supply
- RO/DM Plant/Water Circulation
- Air Conditioning & Chiller Plant

#### Features

- Stainless Steel Impellers, Shaft and Stage casings (SS 304/SS 316)
- All single phase motors are fitted with thermal motor protector
- Strengthened cartridge seals
- Enhanced hydraulic efficiency
- Good compatibility and environment friendly
- Low noise level and low vibration level

#### Technical Specification

Head Max.	: 149 m
Flow Max.	: 4.8 m <sup>3</sup> / h
Power Range	: 0.37 to 2.2 kW
Liquid Temp.	: 0 to +90 °C
Degree of Protection	: IP 55
Class of Insulation	: 'H'
Type of Duty	: S1







## Horizontal Multistage Centrifugal Pumps

### SH, SHI, SHN SERIES

#### Applications

- Suitable for liquid transfer
- Small Industries water supply systems
- HVAC
- Water treatment system
- Industrial plants
- Pressure boosting systems
- Domestic water supply
- Horticulture Irrigation systems

#### Features

- Compact Design
- Worldwide usage
- High reliability
- Easy to service and install
- Wide performance Max
- Silent operation
- Fully stainless steel design
- Booster sets for domestic water supply
- Automatic start / stop when equipped with pressure control or pressure tank

#### Technical Specification

Head Max.	: 60 m.
Flow Max.	: 14 m <sup>3</sup> /h
Power Range	: 0.5 to 03 HP
Liquid Temp.	: 0-90°C
Degree of protection	: IP 55
Class of Insulation	: 'H'
Type of Duty	: S1



## Pressure Booster Pumps

### SCM SERIES

#### Applications

- Suitable for liquid transfer
- Small Industrial water supply system
- Washing system
- HVAC
- Water treatment system
- Industrial plants
- Pressure boosting systems
- Domestic water supply
- Horticulture Irrigation systems

#### Features

- Compact Design
- Worldwide usage
- High reliability
- Easy to service and install
- Wide performance Max
- Silent operation
- Fully stainless steel design
- Booster sets for domestic water supply
- Automatic start / stop when equipped with pressure control or pressure tank

#### Technical Specification

Head Max.	: 130 m.
Flow Max.	: 30 m <sup>3</sup> /h
Power Range	: 0.5 to 10 HP
Liquid Temp.	: 0-90°C
Degree of protection	: IP 55
Class of Insulation	: 'H'
Type of Duty	: S1



## Domestic Water Pressure Booster Pumps

### SJP SERIES

#### Applications

- Wide variety of water supply and transfer duties in Homes
- Used for Horticulture Irrigation
- Used for small scale service Industries
- Gardening and Hobby activities

#### Features

- Self-Priming Pump
- Stable operation even in case of air pockets in the liquid
- A plug having two different setting possibilities (open & close) for maximum discharge, maximum efficiency, etc.
- Easy Installation
- Dynamically balanced rotating parts to ensure minimum vibration during running
- Replaceable wearing parts and hence longer life
- Easy maintenance and spares availability
- Automatic start/stop when equipped with Press control or pressure tank.
- Booster sets for small-scale water supply
- Silent Operation

#### Technical Specification

Position (1) If the valve is completely open	
Head Max.	: 30 - 10 m
Flow Max.	: 14 m <sup>3</sup> / h
Position (2) If the valve is completely close	
Head Max.	: 23 m
Flow Max.	: 4.5 m <sup>3</sup> / h
Power Max.	: 0.75 kW
Liquid Temp.	: 0 to +40 °C
Degree of Protection	: IP 44
Class of Insulation	: 'H'
Type of Duty	: S1





## Hydropneumatic Booster System

## Fire Fighting Pump

### HYPN SERIES

#### Applications

Shakti Hydro SMPC Booster system are design for transfer and pressure boosting of clean water in places such as :

- Water works
- Hospitals
- Hotels
- Schools
- Industries
- Municipal corporation water supply

Depending on the applications, Shakti hydropneumatic systems comes in different configurations

- SMPC-E : fixed speed type.
- SMPC-F : variable speed systems with externally mounted single frequency drive in Shakti control panel e/w Shakti controller and HMI display.
- SMPC-S : variable speed systems with externally mounted frequency drive per pump in Shakti control panel e/w Shakti controller and HMI display (non standard).

#### Features

- Over voltage Protection
- Fully automatic cascade control
- Auto On/Off as per requirement of water
- Protection against VFD failure
- Pump start / stop count

#### Technical Specification

Head Max.	: 20 Bar
Flow Max.	: 360 m <sup>3</sup> / h
Power Max.	: 45 kW
Liquid Temp.	: 0 to +120 °C
Degree of Protection	: IP 55
Class of Insulation	: 'H'
Type of Duty	: S1
No. of Pumps	: 2 to 5



#### Applications

- Industrial and domestic building
- Hotels and hospitals
- Power plant and hydro plant

#### Features

- High efficiency
- Suitable for slightly aggressive liquids
- Reliability
- Service friendly
- Space saving

#### Technical Specification

Pressure Max.	: 30 Bar
Flow Max.	: 4550 LPM ( 1202 GPM)
Design Standard	: NFPA 20, IS 5020, EN 12845, NAC, NBC



\* Considering continuous product development the information/performance/specifications and illustrations disseminated in this catalogue are subject to change without notice.





## Waste Water Pump

### SVX SERIES

#### Applications

- Draining flooded water from the basement / car parking
- Drainage water / car washes / empty Swimming pools
- Municipal Corporation Drainage Line
- Municipal Corporation Drainage Tankers

#### Features

- High Quality of Stainless Steel Motor Body
- Built-In Winding Parts
- Rewindable and easy to repair
- Solids passage
- upto Ø35 mm for SVX10-15/35
- upto Ø50 mm for SVX 10-15/50

#### Technical Specification

Head Max.	: 15 m
Flow Max.	: 30 m <sup>3</sup> / h
Power Range	: 1 to 1.5 HP
Liquid Temp. Max	: +40°C
Degree of Protection	: IP 68
Class of Insulation	: 'H'
Type of Duty	: S1



### SSEG SERIES

#### Applications

The SSEG pumps are ideal for use in sparsely populated areas where gravity sewage systems are not available. Examples include small villages, farm areas, and areas with difficult topography, such as rocky terrains with large differences in levels, or any other area where a pressurized system offers advantages.

**Features** • Clamp connection between motor and pump. • Cartridge shaft seal. • Grinder system at inlet of pump ensures extremely high efficiency and reliable operation. • Smart Trim system enables quick and easy impeller clearance adjustment in order to maintain peak performance.

#### Technical Specification

Head Max.	: 46 m
Flow Max.	: 17 m <sup>3</sup> / h
Power Range	: 0.9 kW to 4 kW
Liquid Temp. Max	: +40°C
Degree of Protection	: IP 68
Class of Insulation	: 'F'
Type of Duty	: S1



### SDW SERIES

#### Applications

- Waste water drainage in factories, Construction Sites and Commercial Facilities
- Drainage system in municipal sewage treatment plant
- Industrial Sewage and Effluent treatment Plants
- Municipal Projects
- Residential and building projects

#### Features

- High efficiency motor
- Anti-Rust Corrosive motor housing
- Non-clogging, minimized abrasive wear
- Superior back to back double mechanical seal
- Maximum particle size upto 45mm

#### Technical Specification

Head Max.	: 5-34 m
Flow Max.	: 2-234 m <sup>3</sup> / h
Power Range	: 0.75 kW to 7.5 kW
Liquid Temp.	: 5-40°C
Degree of Protection	: IP 68
Class of Insulation	: 'B'
Type of Duty	: S1





## Open-Well Centrifugal Pumps

## Self Priming Pumps

## Peripheral Pumps

### SOMB SERIES

#### Applications

- Rural and Urban water installations
- Water supplies for high rise buildings
- Water circulating system for lawn & gardens
- Agriculture lift sprinkler and drip irrigation
- Decorative water fountains

#### Features

- Ultra modern design
- Superior design materials and manufacturing processes assure a longer life
- Easy installation
- Silent vibration free running

#### Technical Specifications

Head Max.	: 33 m.
Flow Max.	: 22 m <sup>3</sup> /h
Power Range	: 0.5 to 2.0 hp
Liquid Temp. Max	: 33°C
Degree of Protection	: IP 58
Type of Duty	: S1



### CRP SERIES

#### Applications

- Domestic water supply
- Water transfer applications
- Home pressure boosting
- Construction site
- Garden / fountains

#### Features:-

- High quality die cast aluminum motor body
- Anti corrosion coated cast iron parts
- In built thermal overload protection
- SS shaft
- Bronze impeller
- Double sealed ball bearings

#### Technical Specifications

Head Max.	: 60 m.
Flow Max.	: 3.5 m <sup>3</sup> /h
Power Range	: 0.5 to 1.0 hp
Liquid Temp. Max	: Max. 33°C
Degree of Protection	: IP 58
Class of Insulation	: B
Type of Duty	: S1



### NSP SERIES

#### Applications

- Residential
- Washing system
- Gardens
- Civil applications

#### Features:-

- Excellent hydraulic performance
- Sturdy and compact
- Good suction lift characteristics
- Brass insert is provided in the pump casing
- Dynamic balanced rotating parts
- Quiet and maintenance free

#### Technical Specifications

Head Max.	: 46 m.
Flow Max.	: 3.0 m <sup>3</sup> /h
Power Range	: 0.5 to 1.0 hp
Liquid Temp. Max	: 40°C
Degree of protection	: IP 58
Class of Insulation	: F
Type of Duty	: S1
Max. Suction lift	: 8m







## Sinh Universal Drive

**Certification :** IEC 61683, IEC 600682-2-(1,2,14,30),  
IS 18221-2 (IEC 62109-2), IEC 60529, EN 50530

### Applications

• All in one solution for driving of various motors like AC-IM, PMSM, IPMSM for solar pumps or any other general applications.

### Features

• Supports wide varieties of motors • Independent data logging facility • Dust-proof & rain-proof IP 65 design • Wide temperature range • Plug & play shock-proof connectors • Graphical lcd for easy operation • Powered with remote monitoring system

### Power Rating

• 0.75 to 10 HP (3 Phase) • 6 AMP to 20 AMP



### FEATURES



SUPPORTS WIDE  
VARIETIES  
OF MOTORS



DUST-PROOF &  
RAIN-PROOF  
IP 65 DESIGN



PLUG & PLAY  
SHOCK-PROOF  
CONNECTORS



POWERED WITH  
REMOTE MONITORING  
SYSTEM



GRAPHICAL LCD  
FOR EASY  
OPERATION



INBUILT MOBILE  
CHARGER PORT



INDEPENDENT  
DATA LOGGING  
FACILITY



WIDE  
TEMPERATURE  
RANGE

## Nandi Universal Drive

**Patents Filed**  
IP No. 201721019554A, 201821013344 & 201821013345

### Applications

• All in one solution for driving of various motors like AC-IM, PMSM, IPMSM for solar pumps or any other general applications.

### Features

• Supports wide varieties of motors • Independent data logging facility • Dust-proof & rain-proof IP 65 design • Wide temperature range • Graphical LCD for easy operation • Inbuilt mobile charger port • Powered with remote monitoring system

### Power Rating

• 10 to 100 HP

### Power Rating

• 25 AMP to 150 AMP



### FEATURES



SUPPORTS WIDE  
VARIETIES OF  
MOTORS



DUST & RAIN PROOF  
IP65 DESIGN



POWERED WITH  
REMOTE MONITORING  
SYSTEM



GRAPHICAL LCD  
FOR EASY  
OPERATION



INDEPENDENT  
DATA LOGGING  
FACILITY



WIDE TEMPERATURE  
RANGE



MOBILE APP  
CONTROL

## Lotus Universal Drive

### Application

All in one solution for driving of all motors like AC-IM, PMSM, IPMSM, S4RM, etc.

### Power Rating

3000W / 5000W / 7500 W



IP 30 DESIGN WITH  
HIGH POWER DENSITY



ANALOG POT FOR  
SPEED CONTROL



SUPPORTS WIDE  
VARIETY OF MOTORS



GRAPHICAL LCD  
FOR EASY  
OPERATION



WIDE  
TEMPERATURE RANGE



INDEPENDENT DATA  
LOGGING FACILITY



## Kalpvriksha (USPC) Universal Solar Pump Inverter

## Kalpvriksha Hybrid Inverter

## Kalpvriksha Grid Tie Inverter

3-10 kW | 3 PHASE | 2 MPPT

### Applications

- Runs pump for agriculture • Feeds extra power to the grid • Increases farmer's income

### Features

- Pump runs from solar • Pump operation without grid is also possible
- Works with ACIM, PMSM & IPMSM • Simultaneous operation of VFD & inverter • Delivers additional power to grid • Maximum utilization of energy

### Power Rating

- 3 HP to 10 HP VFD (3 Phase)
- 3 kW to 10 kW Grid Tie (3 Phase)



### FEATURES



DUST & RAIN PROOF  
IP 65 DESIGN



POWERED WITH  
REMOTE MONITORING  
SYSTEM



INTELLIGENT DIGITAL  
CONTROL



GPRS ENABLED &  
BLUETOOTH  
CONNECTIVITY



USER FRIENDLY  
LCD DISPLAY



PLUG & PLAY  
SHOCK-PROOF  
CONNECTIONS



SUPPORTS WIDE  
VARIETIES OF  
MOTORS



FEEDS EXTRA  
POWER TO  
THE GRID



INCREASE  
FARMER'S  
INCOME



INBUILT MOBILE  
CHARGING PORT

### Applications

- Runs various agrarian applications from solar such as pump, thresher, chaff cutter, atta chakki etc. • Increases farmer's income

### Features

- Multiple applications run from solar • Supports a variety of solar motor pump sets • Shock proof connectors • Inbuilt protection
- Remote monitoring & control • Mobile charging port • Supports a variety of solar pumps • Agrarian application support • Intelligent digital control • Powered with remote monitoring system • GPRS enabled & bluetooth connectivity • Shock-proof connections
- Dust & rain proof IP 65 design

### Power Rating

- 3 HP to 10 HP VFD (3 Phase)



### FEATURES



DUST & RAIN PROOF  
IP 65 DESIGN



SUPPORTS A VARIETY  
OF SOLAR PUMPS



USER FRIENDLY  
LCD DISPLAY



AGRARIAN APPLICATION  
SUPPORT



SHOCK-PROOF  
CONNECTIONS



INTELLIGENT DIGITAL  
CONTROL



POWERED WITH  
REMOTE MONITORING  
SYSTEM



GPRS ENABLED &  
BLUETOOTH  
CONNECTIVITY

### Applications

- Rooftop solar installation & grid-tie inverter in domestic • small & big commercial establishments.

### Features

- Plug & play shock proof unique connections • In-built PV insulation protection • Feeds power to the grid • Simple installation & operation
- Suitable for outdoor installation • In-built surge protection • Dust & rainproof IP 65 design • User friendly LCD display • Intelligent digital control • Powered with remote monitoring system • GPRS/WiFi enabled & bluetooth connectivity

### Power Rating

- 3 kW to 10 kW (3 Phase)



### FEATURES



DUST & RAIN PROOF  
IP 65 DESIGN



INTELLIGENT DIGITAL  
CONTROL



POWERED WITH  
REMOTE MONITORING  
SYSTEM



GPRS ENABLED &  
BLUETOOTH  
CONNECTIVITY



USER FRIENDLY  
LCD DISPLAY

\* Considering continuous product development the information/performance/specifications and illustrations disseminated in this catalogue are subject to change without notice.





## DU / DT Filter

## Sun Shakti Hybrid Inverter Grid Tie Inverter

## Shakti RMS Dongle

1-6 kW | SINGLE PHASE | 2 MPPT

### Applications

- All in one solution for driving of various motors like AC-IM, PMSM, IPMSM for solar pumps or any other general applications.

### Features

- Supports wide varieties of motors
- Independent data logging facility
- Dust-proof & rain-proof IP 65 design
- Wide temperature range
- Graphical LCD for easy operation
- Inbuilt mobile charger port
- Powered with remote monitoring system

### Power Rating

- 10 to 100 HP

### AMP Rating

- 25 AMP to 150 AMP



### FEATURES



PLUG & PLAY  
SHOCK-PROOF  
CONNECTORS



DUST-PROOF &  
RAIN-PROOF  
IP 65 DESIGN



SUPPORTS WIDE  
VARIETIES  
OF DRIVES



WIDE  
TEMPERATURE  
RANGE

### Applications

- Domestic, small and big commercial establishments: Off-grid inverter / Grid-tie Inverter

### Features

- Works with multiple energy sources
- Acts as a solar ups
- In-built PV Insulation protection
- Single phase hybrid Inverter
- Fast charging
- Supports both vrla & llion batteries
- Feeds extra energy to the grid

### Power Rating

- 1 - 6 kVA (1 Phase)



### FEATURES



DUST & RAIN PROOF  
IP 65 DESIGN



USER FRIENDLY  
LCD DISPLAY



INTELLIGENT DIGITAL  
CONTROL



POWERED WITH REMOTE  
MONITORING SYSTEM



GPRS/WIFI ENABLED &  
BLUETOOTH CONNECTIVITY

### Benefits

- Extraction of offline data
- Plug & Play connection
- Compatible up-to IP65 products
- Works on GSM/ WiFi





## A1 Smart Starter

### Applications

Suitable for 1-Phase / 3-Phase AC induction motor.

### Features

- Energy Metering • Ensures longer life of the motor • Better protection
- GPRS & Blue tooth Enabled • User Friendly Display

### Power Rating

- 0.5 HP to 15 HP (1 Phase)
- 0.5 HP to 15 HP (3 Phase)

### AMP Rating

- 1 to 30 AMP



### FEATURES



ENSURES LONGER  
LIFE OF THE MOTOR



BETTER  
PROTECTION



INTELLIGENT ELECTRONIC  
FUNCTIONALITY



STRESS FREE  
OPERATION OF THE MOTOR



USER FRIENDLY  
DISPLAY



GPRS ENABLED &  
BLUETOOTH CONNECTIVITY



REMOTE  
CONTROL



INBUILT AUTO  
SWITCH

## Elite Soft Starter

### Applications

- To softly start and softly stop agricultural and Industrial three phase AC-IM and Shakti's S4RM Motors.

### Features

- Softly start & softly stop the motor • Ensures longer life of the motor • Covers 3 phase ac-im & shakti's S4RM motor • User friendly display • Better protection • GPRS enabled

### Power Rating

- 15 HP to 70 HP

### Power Rating

- 28 to 110 AMP



### FEATURES



SOFTLY START &  
SOFTLY STOP  
THE MOTOR



ENSURES LONGER  
LIFE OF THE MOTOR



STRESS FREE  
OPERATION  
OF THE MOTOR



BETTER  
PROTECTION



USER FRIENDLY  
DISPLAY



GPRS ENABLED





## uPVC Column Pipes

### FEATURES

- Suitable for Depth up to 1500 Feet
- Easy to carry handle In Install
- No change in chemical getting deposited
- Save electricity
- Long lasting
- Inbuilt locking system
- 25 % more discharge as compare to Galvanized pipe
- Rubber gasket and spigot end both inside & outside ensure smooth joining as well as pressure sealing

### RANGE :

Outer Diameter : 33 mm to 165 mm  
Available In Standard, Medium, Heavy & Super Heavy  
Pressure Rating : 15 kg/cm<sup>2</sup> to 35 kg/cm<sup>2</sup>



## PVC Rigid Pipes

### FEATURES

- Lightweight, easy to transport & install
- Strong, flexible & durable
- High electrical resistance, low thermal conductivity & extremely hygienic
- Self-extinguishing and hence fire resistant
- Termite proof
- Leak proof
- Resistant to moisture abrasion & wearing
- Selffit Pipes

### RANGE :

Outer Diameter / Pressure Rating  
90mm to 315 mm OD in 2.5 kgf/cm<sup>2</sup>  
83mm to 315 mm OD in 4.0 kgf/cm<sup>2</sup>  
40mm to 315 mm OD in 6.0 kgf/cm<sup>2</sup>  
20mm to 315 mm OD in 10.0 kgf/cm<sup>2</sup>



## SWR Pipes

### FEATURES

SWR pipes are specially designed and manufactured using high grade raw materials and are an ideal solution for efficient removal of waste without leakage in the drainage system. SWR pipes and fittings are used for non-pressure plumbing applications such as transportation of soil, waste and rainwater, non-pressure industrial drainage applications, and waste discharge systems in residential and commercial complexes, resorts, and hospitals.

### RANGE :

Outer Diameter : 75mm to 160 mm  
Pressure Rating : 2.5 kgf/cm<sup>2</sup>



## HDPE Pipes

### FEATURES

- Excellent corrosion and chemical resistance.
- Inert to most acidic and alkaline solutions.
- High flow characteristics.
- Light weight.
- Easy to handle & transport.
- Excellent flexibility combined with strength.
- Good abrasion resistance.
- Smooth inner walls minimize frictional losses.
- Safe for potable water supply.

### RANGE :

Outer Diameter : 25 mm to 500 mm  
Grade : PE63, PE80 & PE100  
Pressure Rating : PN4, PN6, PN8, PN10 & PN12.5





## Casing Pipes

### FEATURES

- Excellent corrosion and chemical resistance.
- Inert to most acidic and alkaline solutions.
- Light weight.
- Easy to handle & transport.
- Excellent flexibility combined with strength.
- Good abrasion resistance.
- Smooth inner walls minimises frictional losses.
- Safe for potable water supply.

### RANGE :

Outer Diameter : 140 mm to 225 mm  
Colour : Blue & Gray  
Available : Slotting & threading



## Sprinkler Pipes

### FEATURES

- Strong, durable & leak proof
- Safe - UV stabilizer for protection from sunlight & avoid degradation of materials
- Light weight and flexible
- Energy saving
- High Quality Grade Pipe & Fittings
- Inert to chemical, corrosion,
- Water Saving
- Environmental stress
- Long Lasting & Maintenance Free

### RANGE :

Outer Diameter : 50 mm to 200 mm  
Pressure Rating : 2.5, 3.2, 4 & 6 Kg/cm<sup>2</sup>



## Column Pipe Adaptors

### FEATURES

- Highly reliable
- Durable & have long service life.
- Available for all sizes from 1" to 6"



**ADAPTOR SS  
(Top & Bottom)**



**ADAPTOR CI  
(Top & Bottom)**

## Cable

### 3 & 4 CORE FLAT CABLE

The main characteristics of our PVC Compound are as follows:

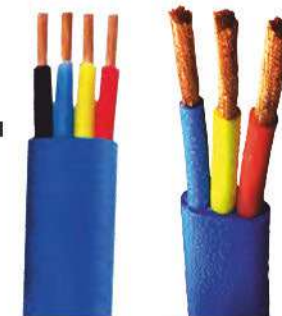
- High dielectric strength.
- High Insulating Resistance Properties.
- Thermal Compatibility & High Mechanical Strength.
- Permanent Colours.
- Permanence : Physical & Electrical properties will not deteriorate even under Severe ageing conditions.
- Three Core Submersible Flat Cable In Voltage Grade 1100 V.

### Technical Specification Of Flat Cable

- Cable Type: Flexible Copper Conductor Pvc Insulated Cable
- Insulation Material: Pvc Type A
- Sheathing Material: St 1
- Voltage Grade: 1100 V
- Volume Resistance For Insulation (27): 5-6 X Ohm.cm
- Volume Resistance For Insulation (70): 6-8 X Ohm.cm
- Tensile Strength Of Sheath: 15 N/
- Elongation: 205 N/
- Brand Name: Shakti

### Application

- Applicable for submersible motor
- Applicable for surface motor
- Applicable for domestic & Industrial







## Drip Irrigation

### PLAIN LATERAL

#### Applications

Agriculture & Horticulture  
Irrigation of fields & plants

#### Features

- Made of Imported virgin raw material
- Long life
- UV resistant
- Water & power saving
- Lesser supervision required

#### Technical Specification

Max. Working Pressure : 4 kg/cm<sup>2</sup>  
Size : 12mm, 16mm, 20mm, 32 mm  
Thickness : ISI class I and class II  
Coil Length : 100m and 300 m



### FLAT DRIP

#### Applications

Agriculture & Horticulture  
Irrigation of fields & plants

#### Features

- Made of Imported virgin raw material
- Long life
- UV resistant
- Customized coil length option
- Uniform flow
- Imported dripper

#### Technical Specification

Max. Working Pressure : 2.5 kg/cm<sup>2</sup>  
Discharge : 1 LPH, 2 LPH & 4 LPH  
Size : 12 mm, 16 mm, 20 mm  
Thickness : 14 MIL (Safer), ISI Class I, II & Class III  
Dripper Spacing : 30 cm to 150 cm  
Filtration required : 130 micron



### ROUND DRIP

#### Applications

Agriculture & Horticulture  
Irrigation of fields & plants

#### Features

- Made of Imported virgin raw material
- Long life
- UV resistant
- Customized coil length option
- Uniform flow
- Imported dripper

#### Technical Specification

Max. Working Pressure : 2.5 kg/cm<sup>2</sup>  
Discharge : 2 LPH & 4 LPH  
Size : 12 mm, 16 mm, 20 mm  
Thickness : ISI Class I, II & Class III  
Dripper Spacing : 30 cm to 150 cm  
Filtration required : 130 micron  
Coil Length : 300m, 500m & 100m





## Solar Mounting Structure (Manual)

### Application

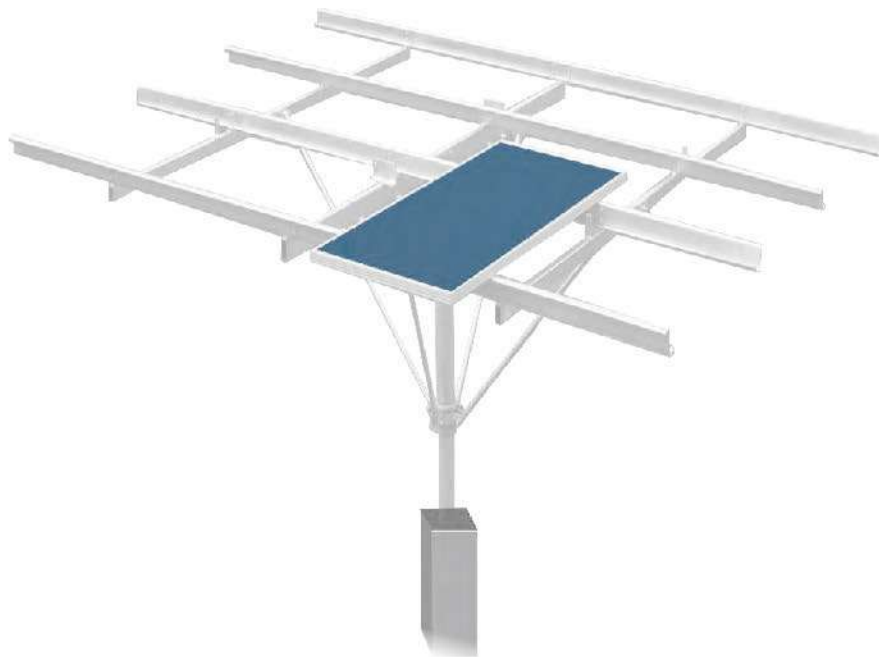
- Used for mounting solar modules

### Features

- Structure can be manually adjusted in a day (East-West) to face the sun optimally.

### Note

- Provides rigidity and stability to support Modules.
- Wind Speed Resistance : 150 km/hr



## Solar Mounting Structure (Auto Tracking)

### Application

- Used for mounting solar modules

### Features

- It can track the daily east to west moment of the sun & the seasonal declination movement of the sun

### Note

- Auto tracking structure provide 30 to 35% more power as compare to non tracking structure
- Wind Speed Resistance : 150 km/hr







## Our Prestigious Installation



**MODEL : 1,500 WATT, DISCHARGE : 12'000 LPD  
(VINAROS , SPAIN)**



**MODEL : 2700 WATT, DISCHARGE : 64'000 LPD  
(TURKANA , KENYA)**



**MODEL : 9000 WATT, DISCHARGE : 102'000 LPD  
(BANGLADESH)**



**MODEL : 1200 WATT, DISCHARGE : 20'000 LPD  
(UGANDA)**



**MODEL : 4800 WATT, DISCHARGE : 120'000 LPD  
(ABUJA , NIGERIA)**



**MODEL : 900 WATT, DISCHARGE : 12'000 LPD  
(WATER & SANITATION CORPORATION, RWANDA)**



**MODEL : 1500 WATT, DISCHARGE : 35'000 LPD  
(KEDAH , MALAYSIA)**



**MODEL : 1800 WATT, DISCHARGE : 145'000 LPD  
(THAILAND)**

## Solar Car Parking 60 kW Power Generation



## Solar On-grid 75 kW Power Generation



And many more ...





# Various certifications - a proof of our excellence.

Various certifications recognize our commitment to excellence. Bureau of Energy Efficiency (BEE) has granted 5 star ratings to more than 260 of our pump models for their superior energy efficiency. We have also been certified by independent bodies like UL, CE, ISO, BIS, ISI, etc.





# OUR PRESENCE



## 100 % OVERSEAS SUBSIDIARIES

SHAKTI PUMPS USA LLC.

SHAKTI PUMPS (FZE), UAE

SHAKTI PUMPS (BANGLADESH) LTD.



## SHAKTI PUMPS (INDIA) LIMITED

Plot No. 401, 402 & 413, Industrial Area, Sector - 3, Pithampur - 454774,  
Dist. - Dhar (M.P.) - INDIA, E-mail: [info@shaktipumps.com](mailto:info@shaktipumps.com)

Toll Free No. : 1800 103 5555

[f](#) [t](#) [li](#) [in](#) [v](#) [o](#) [shaktipumps/](#) [www.shaktipumps.com](http://www.shaktipumps.com)

SAP No. : 2000017309

VC : 000000

Sept. 2023-2024/17/000